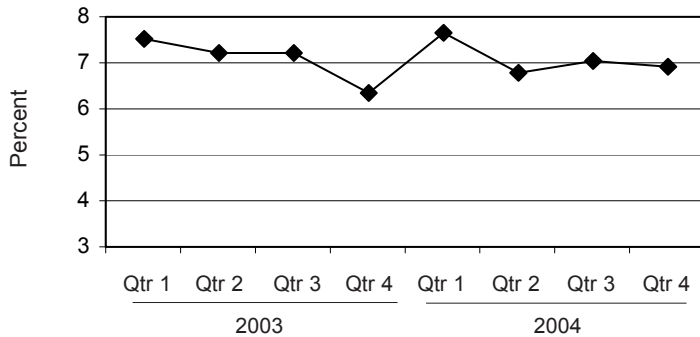


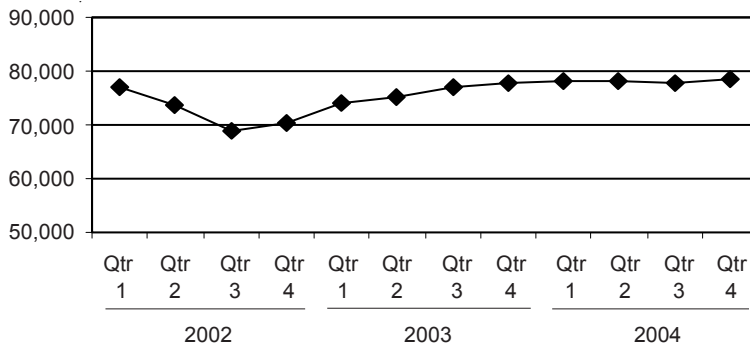


**Michigan's Unemployment Rate Over the Past Two Years**  
(not seasonally adjusted)



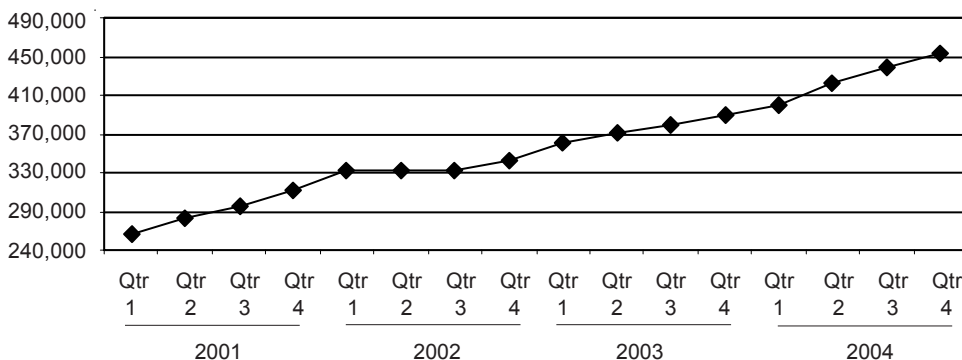
Note: See footnote 1 on page 2  
Source: U.S. Department of Labor

**FIP Caseload Over the Past Three Years**



Source: Michigan Department of Human Services

**Food Assistance Caseload in Michigan Over the Past Four Years**



Source: Michigan Department of Human Services

## Unemployment Down from a Year Ago, Food Assistance Caseload Continues to Rise

### Unemployment


During the fourth quarter of 2004, unemployment in Michigan was at 6.9, slightly up from 6.4 during the same time in 2003 (see footnote page 2). Five counties had an increase of 10 percent or more from the fourth quarter of last year, but the majority of counties saw their unemployment decrease during that time; 34 counties saw decreases of over 10 percent.

### Public Assistance

During the final quarter of 2004, Michigan's Food Assistance caseload increased by 16.6 percent over the same quarter the previous year, while the FIP caseload remained basically the same. This is in keeping with the caseload trends of each program over the past four years, which saw Food Assistance households increase by nearly 200,000 since late 2000 while the FIP caseload remained between 70,000 and 79,000 for most of that time. Fourth quarter applications for both programs changed little from the same time last year, though FIP application approvals decreased by 6.5 percent.

### Sectoral Trends

During the fourth quarter of 2004, the motor vehicle manufacturing industry (excluding parts manufacturing) saw a decrease in jobs by more than 10 percent over the same time during the previous year, though jobs in this sector increased slightly over the previous quarter. Other sectors seeing a drop of more than 10 percent from a year before include warehousing and performing arts spectator activities. Durable goods and retail lost the most jobs between the fourth quarter of 2003 and that of 2004. The local government sector also saw a significant decrease of roughly 7,000 jobs during the past year.

 Prepared by: Michigan League for Human Services	Unemployment (data not seasonally adjusted)						Food Assistance Program					
	Unemployment Rate <sup>1</sup>			Number Unemployed <sup>1</sup>			Total Number of Applications			Average Number of Households Receiving Food Assistance Per Month		
	County	Qtr 4 2003	Qtr 4 2004	% change	Qtr 4 2003	Qtr 4 2004	% change	Qtr 4 2003	Qtr 4 2004	% change	Qtr 4 2003	Qtr 4 2004
<b>Michigan<sup>2</sup></b>	<b>6.4</b>	<b>6.9</b>	<b>8.4</b>	<b>321,868</b>	<b>350,984</b>	<b>9.0</b>	<b>133,752</b>	<b>129,380</b>	<b>-3.3</b>	<b>389,216</b>	<b>453,725</b>	<b>16.6</b>
Alcona	11.0	9.8	-10.3	489	439	-10.3	101	101	0.0	448	471	5.1
Alger	6.6	6.4	-3.5	285	276	-3.3	76	66	-13.2	261	272	4.3
Allegan	6.3	6.2	-1.1	3,571	3,615	1.2	1,076	1,066	-0.9	2,838	3,259	14.8
Alpena	8.2	7.0	-15.0	1,293	1,121	-13.3	448	446	-0.4	1,707	1,888	10.6
Antrim	9.8	8.5	-12.6	1,056	925	-12.4	274	282	2.9	576	649	12.6
Arenac	11.2	10.7	-4.5	788	737	-6.5	238	204	-14.3	919	999	8.8
Baraga	9.3	12.0	28.7	384	508	32.5	118	113	-4.2	322	367	13.8
Barry	4.9	4.3	-11.6	1,556	1,365	-12.3	502	549	9.4	1,535	1,876	22.2
Bay	7.8	7.3	-6.8	4,218	3,833	-9.1	1,281	1,315	2.7	5,038	5,705	13.2
Benzie	8.3	8.0	-4.0	702	689	-1.8	202	209	3.5	445	495	11.3
Berrien	7.2	6.6	-8.8	5,945	5,447	-8.4	2,746	2,700	-1.7	7,797	8,771	12.5
Branch	6.7	6.0	-10.9	1,631	1,458	-10.6	579	654	13.0	1,628	1,745	7.2
Calhoun	6.7	6.6	-1.5	4,487	4,439	-1.1	2,418	2,322	-4.0	7,218	8,599	19.1
Cass	4.8	4.2	-13.2	1,231	1,099	-10.7	653	656	0.5	2,090	2,344	12.2
Charlevoix**	8.6	7.6	-11.2	1,167	1,054	-9.7	**	197	*	**	611	*
Cheboygan	11.4	10.0	-12.5	1,393	1,213	-12.9	425	429	0.9	1,110	1,260	13.5
Chippewa	7.8	7.4	-4.7	1,397	1,331	-4.7	418	433	3.6	1,347	1,523	13.0
Clare	10.0	10.8	8.0	1,148	1,263	10.0	433	481	11.1	2,056	2,284	11.1
Clinton	4.6	5.5	19.7	1,703	2,028	19.1	347	390	12.4	1,164	1,367	17.4
Crawford	8.9	7.7	-12.8	487	426	-12.6	233	209	-10.3	697	741	6.4
Delta	8.4	7.0	-16.6	1,645	1,385	-15.8	463	452	-2.4	1,728	1,831	5.9
Dickinson	6.5	5.5	-15.4	942	814	-13.6	262	260	-0.8	895	930	3.9
Eaton	4.7	5.1	10.0	2,821	3,062	8.6	896	1,028	14.7	2,668	3,036	13.8
Emmet**	9.0	9.2	2.2	1,712	1,770	3.4	516	408	-20.9	1,539	1,099	-28.6
Genesee	9.1	8.4	-8.4	17,041	15,681	-8.0	8,804	8,129	-7.7	25,407	29,811	17.3
Gladwin	11.5	10.6	-8.4	1,115	1,039	-6.9	326	333	2.1	1,232	1,416	15.0
Gogebic	7.5	6.1	-17.9	620	506	-18.5	213	211	-0.9	841	952	13.2
Gr. Traverse**	6.3	6.1	-2.7	2,959	2,954	-0.2	1,027	984	-4.2	2,445	2,690	10.0
Gratiot	6.9	8.4	21.3	1,417	1,718	21.2	475	456	-4.0	1,479	1,703	15.1
Hillsdale	8.8	7.3	-17.0	2,142	1,743	-18.7	515	487	-5.4	1,476	1,698	15.0
Houghton	5.2	4.7	-10.2	914	843	-7.7	269	280	4.1	1,442	1,531	6.2
Huron	8.5	7.0	-17.6	1,505	1,221	-18.9	266	189	-28.9	1,305	1,442	10.5
Ingham	5.6	6.1	8.9	8,842	9,498	7.4	4,498	4,350	-3.3	10,989	13,624	24.0
Ionia	7.2	7.6	6.5	2,033	2,168	6.6	599	700	16.9	2,048	2,437	19.0
Iosco	9.9	8.5	-13.5	1,026	882	-14.0	348	407	17.0	1,529	1,685	10.2
Iron	6.5	6.3	-2.6	354	351	-0.9	135	141	4.4	537	558	3.9
Isabella	4.3	3.9	-10.1	1,452	1,306	-10.1	582	631	8.4	2,078	2,340	12.6
Jackson	7.5	6.4	-15.5	6,040	4,992	-17.4	2,339	2,235	-4.4	6,007	6,858	14.2
Kalamazoo	5.4	4.9	-8.7	7,086	6,482	-8.5	3,203	3,220	0.5	9,340	11,325	21.3
Kalkaska	8.5	7.2	-15.0	677	579	-14.4	230	238	3.5	736	843	14.4
Kent	7.5	6.0	-19.6	24,792	19,993	-19.4	7,744	8,189	5.7	21,597	25,221	16.8
Keweenaw	14.2	14.6	2.8	136	146	7.1	24	6	-75.0	61	81	32.2
Lake	11.9	11.4	-3.9	452	423	-6.4	267	227	-15.0	941	1,044	11.0
Lapeer	7.8	7.5	-4.3	3,471	3,337	-3.9	615	707	15.0	1,828	2,111	15.5
Leelanau**	5.1	4.3	-15.0	605	527	-12.9	**	91	*	**	281	*

<sup>1</sup>Please note: The U.S. Department of Labor (DOL) has changed the method by which it estimates employment and unemployment on the statewide, metropolitan and county levels. The monthly statewide unemployment figures on which the above quarterly statewide numbers are based were posted by the department during March 2005 based on the new model, and differ from those posted by the department previously. County level unemployment figures based on the new model are not final, however, and therefore the county level figures above are based on the Department of Labor's previous data. Final county estimates based on the new model will be made available by the DOL later this year, and at that time this publication will use the new numbers.

<sup>2</sup>In some cases the Michigan number is slightly different from the county total.

\*Percent change cannot be calculated.

\*\*Public Assistance data for Charlevoix is combined with and reported as Emmet, Public Assistance data for Leelanau is combined with and reported as Grand Traverse, and Public Assistance data for Missaukee is combined with and reported as Wexford.

Data sources: Unemployment: Bureau of Labor Statistics, Local Area Unemployment Statistics; Public Assistance: Michigan Department of Human Services.

Family Independence Program (Cash Assistance)

Total Number of Applications			Average Number of Families Receiving Cash Assistance Per Month			Application Approvals: Unemployment Benefits Exhausted, Layoff or Discharge, Depleted Savings, Non-Exempt Property or Loss of Other Resources			Total Number of Denials		Income Exceeds Standards as Percent of Denials		Percent of Cases Without Earned Income, Out of Total Cases Expected to Work	
Qtr 4 2003	Qtr 4 2004	% change	Qtr 4 2003	Qtr 4 2004	% change	Qtr 4 2003	Qtr 4 2004	% change	Qtr 4 2003	Qtr 4 2004	Qtr 4 2003	Qtr 4 2004	Qtr 4 2003	Qtr 4 2004
<b>45,155</b>	<b>45,510</b>	<b>0.8</b>	<b>77,822</b>	<b>78,514</b>	<b>0.9</b>	<b>2,496</b>	<b>2,334</b>	<b>-6.5</b>	<b>20,823</b>	<b>21,130</b>	<b>44.1</b>	<b>44.6</b>	<b>65%</b>	<b>67%</b>
35	38	8.6	42	43	2.4	0	0	*	16	15	50.0	60.0	53%	19%
26	24	-7.7	25	23	-10.5	5	2	-60.0	17	11	82.4	54.5	33%	13%
469	477	1.7	372	355	-4.7	84	29	-65.5	210	239	41.4	53.1	59%	55%
140	145	3.6	182	171	-5.9	28	28	0.0	59	65	66.1	67.7	45%	34%
127	97	-23.6	60	69	15.6	2	3	50.0	73	45	57.5	64.4	0%	20%
87	68	-21.8	106	96	-9.1	6	4	-33.3	41	39	46.3	48.7	58%	42%
52	48	-7.7	58	59	1.1	0	0	*	16	11	43.8	18.2	25%	28%
171	201	17.5	233	245	5.2	51	17	-66.7	66	90	50.0	57.8	44%	64%
508	535	5.3	713	787	10.5	40	32	-20.0	193	231	46.6	48.9	53%	49%
85	76	-10.6	52	42	-19.4	10	13	30.0	51	45	60.8	53.3	49%	38%
1,140	1,073	-5.9	1,466	1,283	-12.4	15	29	93.3	543	484	42.2	41.9	38%	55%
279	293	5.0	265	235	-11.1	23	23	0.0	135	152	50.4	52.0	66%	52%
932	971	4.2	1,365	1,440	5.5	83	72	-13.3	433	454	48.7	50.4	68%	70%
257	259	0.8	306	312	2.0	14	12	-14.3	104	118	51.9	52.5	59%	66%
**	50	*	**	48	*	**	2	*	**	26	**	50.0	**	**
183	153	-16.4	116	122	4.6	11	15	36.4	65	75	46.2	57.3	79%	54%
166	184	10.8	167	170	1.8	12	26	116.7	70	81	52.9	50.6	75%	80%
193	210	8.8	279	304	9.0	17	26	52.9	81	105	43.2	48.6	60%	50%
142	148	4.2	123	135	9.5	6	9	50.0	61	82	65.6	46.3	44%	58%
100	88	-12.0	85	80	-5.5	9	6	-33.3	50	50	54.0	64.0	44%	70%
162	136	-16.0	161	144	-10.6	12	14	16.7	72	46	45.8	60.9	39%	71%
108	92	-14.8	86	64	-25.9	12	9	-25.0	56	43	48.2	60.5	23%	33%
361	367	1.7	356	337	-5.3	24	7	-70.8	163	205	50.9	48.3	47%	55%
155	107	-31.0	110	84	-23.9	4	2	-50.0	73	46	41.1	52.2	21%	10%
3,309	3,451	4.3	6,495	6,577	1.3	161	195	21.1	1,586	1,529	38.8	41.9	58%	58%
136	133	-2.2	133	140	5.0	9	5	-44.4	65	62	44.6	40.3	82%	55%
64	51	-20.3	123	145	17.9	4	5	25.0	19	19	73.7	63.2	33%	50%
335	286	-14.6	198	160	-19.2	19	9	-52.6	167	185	61.7	62.7	42%	70%
230	248	7.8	233	241	3.3	19	19	0.0	129	141	46.5	55.3	50%	58%
241	225	-6.6	208	184	-11.8	22	28	27.3	102	102	50.0	56.9	47%	62%
68	53	-22.1	102	84	-17.6	6	3	-50.0	16	14	43.8	50.0	51%	41%
69	76	10.1	103	114	10.6	6	13	116.7	24	22	62.5	72.7	72%	71%
1,441	1,440	-0.1	1,587	1,705	7.4	50	66	32.0	784	715	39.7	41.5	46%	66%
285	305	7.0	260	238	-8.2	10	8	-20.0	107	149	57.0	55.7	75%	62%
141	139	-1.4	138	146	5.8	6	4	-33.3	72	70	45.8	45.7	34%	55%
47	58	23.4	70	67	-4.7	11	7	-36.4	12	16	41.7	50.0	50%	24%
246	265	7.7	272	292	7.5	10	4	-60.0	119	115	53.8	51.3	73%	67%
803	840	4.6	1,232	1,116	-9.5	48	43	-10.4	400	395	42.0	39.7	74%	68%
1,218	1,220	0.2	1,743	1,745	0.1	57	58	1.8	467	481	38.3	42.6	69%	68%
99	85	-14.1	73	65	-11.0	11	19	72.7	42	36	42.9	58.3	23%	22%
2,821	2,878	2.0	4,436	4,478	0.9	188	163	-13.3	1,283	1,449	45.4	44.8	46%	41%
3	1	-66.7	2	4	85.7	1	1	0.0	0	0	*	*	0%	0%
85	104	22.4	161	137	-15.1	5	4	-20.0	23	29	26.1	37.9	62%	73%
279	265	-5.0	273	245	-10.0	9	2	-77.8	131	171	53.4	43.9	59%	61%
**	25	*	**	24	*	**	0	*	**	16	**	62.5	**	**


<sup>1</sup>Please note: The U.S. Department of Labor (DOL) has changed the method by which it estimates employment and unemployment on the statewide, metropolitan and county levels. The monthly statewide unemployment figures on which the above quarterly statewide numbers are based were posted by the department during March 2005 based on the new model, and differ from those posted by the department previously. County level unemployment figures based on the new model are not final, however, and therefore the county level figures above are based on the Department of Labor's previous data. Final county estimates based on the new model will be made available by the DOL later this year, and at that time this publication will use the new numbers.

<sup>2</sup>In some cases the Michigan number is slightly different from the county total.

\*Percent change cannot be calculated.

\*\*Public Assistance data for Charlevoix is combined with and reported as Emmet, Public Assistance data for Leelanau is combined with and reported as Grand Traverse, and Public Assistance data for Missaukee is combined with and reported as Wexford.

Data sources: Unemployment: Bureau of Labor Statistics, Local Area Unemployment Statistics; Public Assistance: Michigan Department of Human Services.

 Prepared by: Michigan League for Human Services	Unemployment (data not seasonally adjusted)						Food Assistance Program					
	Unemployment Rate			Number Unemployed			Total Number of Applications			Average Number of Households Receiving Food Assistance Per Month		
	Qtr 4 2003	Qtr 4 2004	% change	Qtr 4 2003	Qtr 4 2004	% change	Qtr 4 2003	Qtr 4 2004	% change	Qtr 4 2003	Qtr 4 2004	% change
Lenawee	7.0	6.5	-6.2	3,324	3,155	-5.1	840	1,027	22.3	2,723	3,084	13.3
Livingston	3.8	3.7	-2.6	3,361	3,314	-1.4	696	733	5.3	1,573	1,923	22.2
Luce	6.6	6.7	2.0	182	189	3.5	102	87	-14.7	414	323	-21.9
Mackinac	12.8	13.2	3.4	782	819	4.6	103	135	31.1	239	333	39.2
Macomb	6.4	6.1	-3.7	28,086	27,119	-3.4	6,290	6,428	2.2	18,054	21,911	21.4
Manistee	8.8	7.9	-10.3	999	905	-9.4	285	311	9.1	1,032	1,275	23.6
Marquette	5.7	5.2	-8.7	1,925	1,777	-7.7	570	579	1.6	2,110	2,409	14.2
Mason	12.1	9.1	-24.8	1,896	1,391	-26.7	446	347	-22.2	1,284	1,399	9.0
Mecosta	6.4	6.6	4.2	1,240	1,269	2.3	552	624	13.0	1,935	2,331	20.4
Menominee	7.2	5.7	-21.2	866	678	-21.7	237	229	-3.4	950	1,036	9.1
Midland	6.2	5.7	-7.0	2,674	2,418	-9.6	717	795	10.9	2,522	2,968	17.7
Missaukee**	7.3	6.4	-12.4	492	432	-12.1	**	**	**	**	475	*
Monroe	6.8	5.7	-16.3	5,087	4,228	-16.9	1,223	1,254	2.5	3,518	4,161	18.3
Montcalm	8.8	8.5	-3.4	2,316	2,228	-3.8	715	684	-4.3	2,308	2,653	14.9
Montmorency	14.0	13.6	-2.6	545	538	-1.3	129	133	3.1	550	591	7.5
Muskegon	9.5	7.9	-17.1	7,845	6,525	-16.8	3,103	3,207	3.4	10,433	12,407	18.9
Newaygo	9.2	7.4	-18.9	2,044	1,635	-20.0	621	631	1.6	2,144	2,406	12.2
Oakland	5.0	4.8	-4.7	33,376	32,260	-3.3	9,141	9,085	-0.6	21,880	24,829	13.5
Oceana	8.9	8.2	-7.9	1,271	1,134	-10.8	414	414	0.0	1,467	1,590	8.4
Ogemaw	9.0	7.2	-20.0	867	688	-20.6	258	297	15.1	1,407	1,654	17.6
Ontonagon	8.2	7.6	-7.3	227	216	-4.9	51	55	7.8	302	330	9.3
Osceola	8.6	8.2	-4.7	907	863	-4.8	339	325	-4.1	1,202	1,368	13.8
Oscoda	13.7	13.2	-3.9	444	425	-4.4	139	141	1.4	552	603	9.2
Otsego	7.8	6.9	-10.7	1,048	959	-8.5	279	306	9.7	941	1,039	10.4
Ottawa	5.7	5.2	-9.4	8,008	7,335	-8.4	1,524	1,614	5.9	4,033	4,816	19.4
Presque Isle	11.0	10.4	-5.2	711	651	-8.4	118	114	-3.4	462	513	11.2
Roscommon	9.1	9.0	-1.1	786	797	1.4	327	369	12.8	1,577	1,719	9.0
Saginaw	8.8	7.9	-9.8	8,858	7,794	-12.0	3,677	3,409	-7.3	11,953	13,616	13.9
Saint Clair	8.9	7.8	-12.4	7,394	6,463	-12.6	2,027	1,867	-7.9	6,091	6,825	12.0
Saint Joseph	7.4	5.7	-23.0	2,358	1,762	-25.3	947	879	-7.2	2,669	2,817	5.5
Sanilac	10.4	8.9	-14.1	2,139	1,828	-14.5	528	493	-6.6	1,939	2,136	10.2
Schoolcraft	9.9	9.0	-8.4	428	400	-6.5	95	76	-20.0	435	456	5.0
Shiawassee	7.4	8.3	11.2	2,571	2,888	12.3	805	817	1.5	2,550	2,943	15.4
Tuscola	8.7	7.9	-8.8	2,523	2,302	-8.8	502	508	1.2	1,837	2,121	15.4
Van Buren	7.8	7.7	-1.7	2,911	2,885	-0.9	1,400	1,410	0.7	3,920	4,387	11.9
Washtenaw	3.1	3.1	1.1	5,654	5,815	2.8	2,541	2,490	-2.0	6,512	7,996	22.8
Wayne	8.7	8.2	-5.8	79,644	75,150	-5.6	44,211	39,666	-10.3	124,142	146,423	17.9
Wexford**	8.5	7.5	-11.4	1,254	1,115	-11.1	616	515	-16.4	2,213	2,087	-5.7

**FACT**

Of the Michigan workers who worked at least 20 hours per week in 2002-2003, 31% of all workers and 37.8% of private-sector workers received no health insurance through their employer.

\*Percent change cannot be calculated.

\*\*Public Assistance data for Charlevoix is combined with and reported as Emmet, Public Assistance data for Leelanau is combined with and reported as Grand Traverse, and Public Assistance data for Missaukee is combined with and reported as Wexford.

Data sources: Unemployment: Bureau of Labor Statistics, Local Area Unemployment Statistics; Public Assistance: Michigan Department of Human Services.

**Family Independence Program (Cash Assistance)**

Total Number of Applications			Average Number of Families Receiving Cash Assistance Per Month			Application Approvals: Unemployment Benefits Exhausted, Layoff or Discharge, Depleted Savings, Non-Exempt Property or Loss of Other Resources			Total Number of Denials		Income Exceeds Standards as Percent of Denials		Percent of Cases Without Earned Income, Out of Total Cases Expected to Work	
Qtr 4 2003	Qtr 4 2004	% change	Qtr 4 2003	Qtr 4 2004	% change	Qtr 4 2003	Qtr 4 2004	% change	Qtr 4 2003	Qtr 4 2004	Qtr 4 2003	Qtr 4 2004	Qtr 4 2003	Qtr 4 2004
330	367	11.2	382	373	-2.4	8	12	50.0	161	189	57.1	48.7	33%	55%
252	286	13.5	150	149	-0.7	14	11	-21.4	151	174	53.0	51.1	41%	65%
48	34	-29.2	46	30	-35.0	5	1	-80.0	27	15	48.1	60.0	61%	61%
39	64	64.1	28	38	34.1	9	3	-66.7	19	35	57.9	54.3	17%	0%
2,002	1,972	-1.5	2,322	2,499	7.6	106	104	-1.9	1,015	1,056	52.6	47.5	63%	68%
123	106	-13.8	121	125	3.3	14	11	-21.4	43	45	58.1	57.8	58%	50%
165	168	1.8	249	244	-1.7	10	20	100.0	51	59	43.1	45.8	65%	61%
162	150	-7.4	193	196	1.4	17	20	17.6	55	51	60.0	41.2	59%	65%
216	208	-3.7	207	214	3.4	3	2	-33.3	95	80	45.3	50.0	65%	65%
95	67	-29.5	93	85	-9.3	10	9	-10.0	33	23	39.4	43.5	78%	77%
264	275	4.2	310	340	9.6	29	26	-10.3	137	143	60.6	56.6	44%	48%
**	52	*	**	55	*	**	1	*	**	20	**	65.0	**	**
510	537	5.3	596	606	1.7	31	12	-61.3	241	273	46.1	43.2	59%	68%
322	330	2.5	294	272	-7.4	43	16	-62.8	145	156	50.3	54.5	64%	69%
46	50	8.7	47	49	4.3	5	4	-20.0	21	25	57.1	60.0	33%	90%
1,199	1,251	4.3	2,600	2,668	2.6	67	89	32.8	413	449	49.9	48.3	71%	71%
225	229	1.8	303	276	-8.9	14	7	-50.0	75	73	25.3	34.2	64%	74%
2,678	2,591	-3.2	3,301	3,365	1.9	110	96	-12.7	1,607	1,521	45.7	47.8	62%	67%
206	199	-3.4	300	274	-8.5	45	34	-24.4	64	59	53.1	69.5	63%	60%
105	114	8.6	144	156	8.1	21	25	19.0	35	26	54.3	61.5	53%	56%
21	32	52.4	38	37	-2.7	2	3	50.0	8	9	50.0	55.6	33%	38%
168	142	-15.5	164	164	0.0	16	7	-56.3	55	65	69.1	47.7	57%	69%
56	51	-8.9	57	52	-8.8	11	2	-81.8	22	17	72.7	58.8	50%	28%
110	106	-3.6	87	71	-18.5	6	2	-66.7	62	50	54.8	72.0	67%	52%
476	490	2.9	469	457	-2.4	16	6	-62.5	201	221	46.3	52.5	67%	59%
43	40	-7.0	35	43	22.6	2	2	0.0	18	22	33.3	59.1	0%	0%
138	141	2.2	170	163	-3.7	5	2	-60.0	52	70	59.6	54.3	38%	39%
1,350	1,351	0.1	3,149	3,003	-4.6	102	111	8.8	615	611	43.3	41.7	48%	51%
722	717	-0.7	1,072	1,005	-6.2	52	68	30.8	300	299	40.7	44.8	64%	63%
382	373	-2.4	364	302	-17.0	27	32	18.5	183	156	45.4	38.5	74%	62%
182	176	-3.3	241	232	-3.5	42	48	14.3	57	90	54.4	45.6	54%	55%
34	38	11.8	55	45	-18.1	3	3	0.0	5	10	100.0	40.0	55%	68%
343	378	10.2	276	296	7.3	14	11	-21.4	171	205	45.0	56.6	41%	41%
219	212	-3.2	236	233	-1.1	21	27	28.6	102	87	48.0	51.7	57%	56%
623	600	-3.7	656	629	-4.2	44	38	-13.6	272	237	45.6	47.3	52%	59%
823	822	-0.1	1,181	1,230	4.1	13	15	15.4	396	382	37.1	35.6	64%	67%
12,411	12,550	1.1	33,043	33,732	2.1	430	411	-4.4	5,605	5,544	38.9	37.7	71%	71%
269	253	-5.9	275	251	-8.8	9	7	-22.2	115	109	47.0	60.6	61%	67%

**FACT**

The median hourly wage for Michigan males in 2003 was \$16.37, while the median wage for Michigan females was \$12.21.

\*Percent change cannot be calculated.

\*\*Public Assistance data for Charlevoix is combined with and reported as Emmet, Public Assistance data for Leelanau is combined with and reported as Grand Traverse, and Public Assistance data for Missaukee is combined with and reported as Wexford.

Data sources: Unemployment: Bureau of Labor Statistics, Local Area Unemployment Statistics; Public Assistance: Michigan Department of Human Services.

**Employment Trends by Selected Industries in Michigan**  
(data not seasonally adjusted, rounded to the nearest hundred)

Industry	Avg 2003 Qtr 4	Avg 2004 Qtr 4	% Change	Industry	Avg 2003 Qtr 4	Avg 2004 Qtr 4	% Change
<b>TOTAL NONFARM</b>	<b>4,449,500</b>	<b>4,410,200</b>	<b>-0.9</b>	<b>Trade Transportation &amp; Utilities</b>	<b>827,700</b>	<b>810,000</b>	<b>-2.2</b>
<b>TOTAL PRIVATE</b>	<b>3,745,900</b>	<b>3,711,200</b>	<b>-0.9</b>	• <b>Wholesale Trade</b>	<b>175,200</b>	<b>173,700</b>	<b>-0.9</b>
<b>GOODS PRODUCING</b>	<b>923,000</b>	<b>906,800</b>	<b>-1.8</b>	Merchant Wholesalers			
<b>SERVICE-PROVIDING</b>	<b>3,526,500</b>	<b>3,503,400</b>	<b>-0.7</b>	Durable Goods	98,500	99,100	0.6
<b>Natural Resources and Mining</b>	<b>8,200</b>	<b>7,700</b>	<b>-6.5</b>	Merchant Wholesalers			
Mining	6,400	6,000	-6.7	Nondurable Goods	50,700	49,800	-1.8
Mining except oil and gas	4,400	4,200	-4.8	Wholesale Electronic, Markets,			
<b>Construction</b>	<b>195,500</b>	<b>194,800</b>	<b>-0.4</b>	Agents and Brokers	26,000	24,800	-4.8
Construction of Buildings	46,500	47,800	2.7	• <b>Retail Trade</b>	<b>528,400</b>	<b>513,000</b>	<b>-3.0</b>
Heavy and Civil Engineering	18,300	18,500	1.1	Motor Vehicle and Parts Dealers	61,300	63,000	2.7
Specialty Trade Contractors	130,800	128,500	-1.8	Furniture and Home Furnishings	18,800	17,900	-5.0
<b>Manufacturing</b>	<b>719,300</b>	<b>704,200</b>	<b>-2.1</b>	Electronics and Appliance	16,400	16,300	-0.6
• <b>Durable Goods</b>	<b>569,200</b>	<b>554,200</b>	<b>-2.7</b>	Building Material and Garden Equip.			
Wood Product Manufacturing	11,400	11,200	-1.8	and Supplies Dealers	45,300	43,600	-3.9
Nonmetallic Mineral Products	17,200	17,600	2.3	Food and Beverage Stores	91,400	88,600	-3.2
Primary Metal Manufacturing	27,000	26,700	-1.1	Health and Personal Care	32,400	31,700	-2.2
Fabricated Metal Product	81,800	83,400	1.9	Gasoline Stations	27,100	26,800	-1.1
Machinery Manufacturing	74,100	75,400	1.7	Clothing and Clothing Accessories	40,000	41,600	3.8
Computer and Electronic Products	19,500	19,500	0.0	Sporting Goods, Hobby, Book,			
Electrical Equipment and				and Music Stores	25,700	25,300	-1.6
Appliances	14,400	14,600	1.4	General Merchandise Stores	126,300	119,200	-6.0
Motor Vehicle Manufacturing	78,400	70,700	-10.9	Miscellaneous Store Retail	30,700	29,400	-4.4
Motor Vehicle Parts				• <b>Transportation &amp; Warehousing</b>	<b>104,100</b>	<b>105,900</b>	<b>1.7</b>
Manufacturing	177,600	171,000	-3.9	Rail Transportation	4,600	4,600	0.0
Furniture and Related Products	26,000	25,800	-0.8	Truck Transportation	35,100	37,000	5.1
Miscellaneous Manufacturing	18,100	17,000	-6.5	Warehousing and Storage	15,300	13,900	-10.1
• <b>Non-Durable Goods</b>	<b>150,100</b>	<b>150,100</b>	<b>0.0</b>	<b>Information</b>	<b>70,100</b>	<b>65,500</b>	<b>-7.0</b>
Food Manufacturing	33,400	32,100	-4.0	Publishing Industries	25,800	23,500	-9.8
Paper Manufacturing	15,100	15,500	2.6	Telecommunications	23,300	21,700	-7.4
Printing and Related Support				<b>Financial Activities</b>	<b>218,000</b>	<b>214,300</b>	<b>-1.7</b>
Activities	19,100	18,700	-2.1	Finance and Insurance	161,100	156,100	-3.2
Chemical Manufacturing	28,500	29,000	1.7	Real Estate	38,600	39,300	1.8
Plastics and Rubber Products	42,900	44,100	2.7	Rental and Leasing Services	16,900	17,400	2.9

Note: Industry details and subtotals may not sum to totals due to rounding.

Source: Department of Labor and Economic Growth/Office of Labor Market Information, Current Employment Statistics Section - (800) 225-3732

**Employment Trends by Selected Industries in Michigan**  
(data not seasonally adjusted, rounded to the nearest hundred)

Industry	Avg 2003 Qtr 4	Avg 2004 Qtr 4	% Change	Industry	Avg 2003 Qtr 4	Avg 2004 Qtr 4	% Change
<b>Professional &amp; Business Services</b>	<b>584,500</b>	<b>591,800</b>	<b>1.2</b>	<b>Other Services</b>	<b>170,700</b>	<b>173,800</b>	<b>1.8</b>
Legal Services	29,300	28,900	-1.4	Repair and Maintenance	42,300	39,800	-6.3
Accounting and Tax Preparation	26,200	25,100	-4.4	Personal and Laundry Services	40,600	38,800	-4.6
Architectural Engineering	71,000	75,300	5.7	Religious Grantmaking Civic Professional	87,900	95,300	7.8
Computer Systems Design	38,200	39,100	2.3	<b>Government</b>	<b>703,600</b>	<b>698,900</b>	<b>-0.7</b>
Management, Scientific and Technical Consulting Services	19,500	20,300	3.9	• <b>Federal Government</b>	<b>55,500</b>	<b>55,000</b>	<b>-0.9</b>
Scientific Research and Development Services	23,800	23,600	-0.8	Federal Government Hospital Services	5,900	6,100	3.3
Advertising and Related	15,900	16,300	2.5	U.S. Postal Service	28,400	27,500	-3.3
Other Professional Scientific and Technical Services	15,600	15,500	-0.6	• <b>State Government</b>	<b>170,700</b>	<b>173,500</b>	<b>1.6</b>
Management of Companies	66,900	66,800	-0.1	State Government Educational Services	100,400	102,600	2.1
Administrative & Support Services	272,300	275,300	1.1	State Government Hospital Services	14,000	14,600	4.1
<b>Educational and Health Services</b>	<b>557,300</b>	<b>555,800</b>	<b>-0.3</b>	• <b>Local Government</b>	<b>477,400</b>	<b>470,400</b>	<b>-1.5</b>
• <b>Educational Services</b> (see also <b>Government</b> )	<b>85,100</b>	<b>82,400</b>	<b>-3.3</b>	Local Government Educational Services	293,100	290,100	-1.0
• <b>Health Care &amp; Social Assistance</b>	<b>472,100</b>	<b>473,400</b>	<b>0.3</b>	Local Government Hospitals	13,200	13,300	0.8
Ambulatory Health Care Services	155,900	157,800	1.2	Local Government Elementary and Secondary Schools	269,500	265,900	-1.4
Offices of Physicians	62,400	63,500	1.7	Local Government Junior Colleges	23,200	23,100	-0.4
Offices of Dentists	31,300	31,000	-1.0				
Offices of Other Health Professionals	18,500	19,500	5.1				
Home Health Care Service	22,700	23,600	3.8				
Hospitals	180,300	179,800	-0.3				
Nursing and Residential Care	86,700	86,400	-0.3				
—Nursing Care Facilities	40,800	39,800	-2.5				
—Community Care Facilities	22,100	22,500	1.8				
Social Assistance	49,300	49,500	0.4				
Individual and Family Services	22,300	21,800	-2.3				
<b>Leisure and Hospitality</b>	<b>394,500</b>	<b>393,200</b>	<b>-0.3</b>				
Performing Arts Spectator Activities	9,500	8,500	-11.8				
Amusement, Gambling & Recreation	46,200	43,000	-7.4				
Accommodation	32,900	32,100	-2.5				
Food Services and Drinking	302,300	306,500	1.4				

**VISIT OUR WEBSITE FOR MORE INFORMATION!**

The "Work and Wages" section of the Michigan League for Human Services website has information on Workforce Development, Work Supports, Unemployment, and Self-Sufficiency. It also includes back issues of the Economic Security Bulletin. Go to <http://www.MiLHS.org> and click the "Work and Wages" tab at the right.

Note: Industry details and subtotals may not sum to totals due to rounding.

Source: Department of Labor and Economic Growth/Office of Labor Market Information, Current Employment Statistics Section - (800) 225-3732

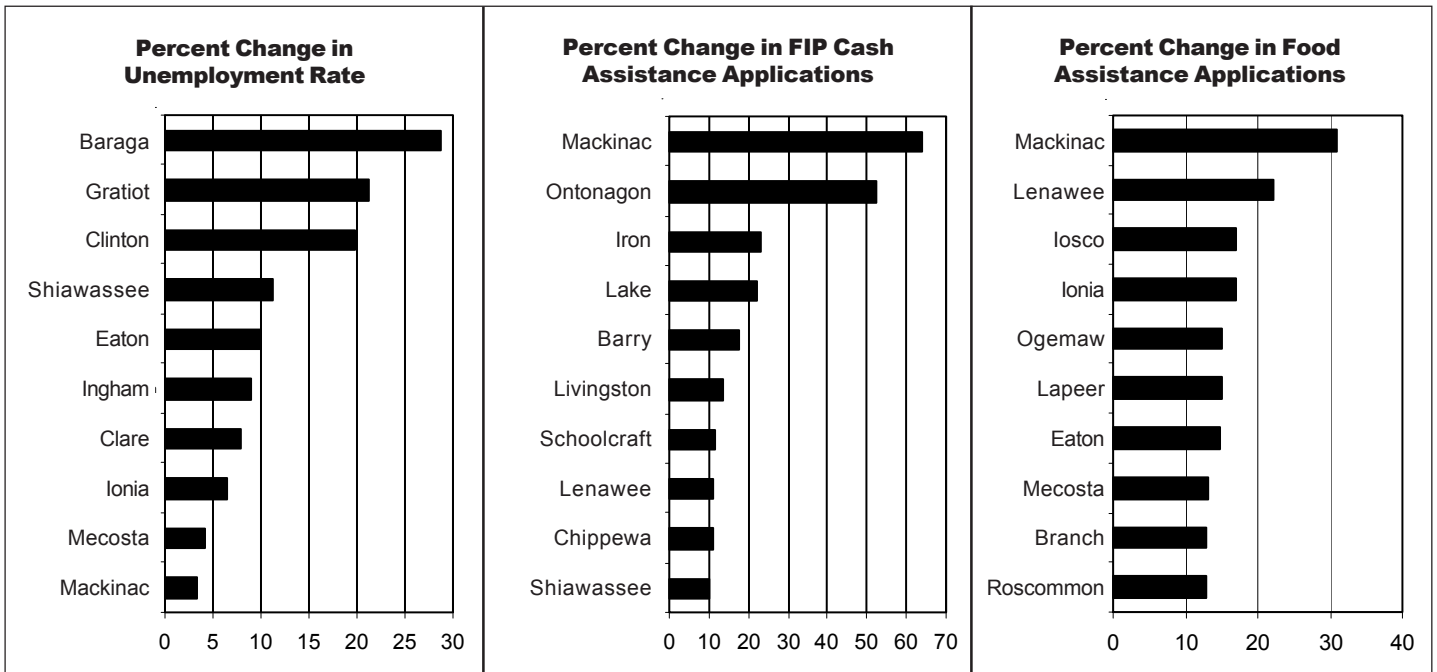


**Michigan League for Human Services**  
 1115 South Pennsylvania Avenue, Suite 202  
 Lansing, MI 48912-1658  
 (517) 487-5436 — Fax (517) 371-4546  
 Web site: www.milhs.org  
*A United Way Agency*

*Nonprofit  
 Organization*  
 U.S. Postage  
**Paid**  
 Lansing, MI  
 Permit #1421

Would you like to receive  
 our *Economic Security Bulletin* by E-mail?  
 Send your request to [pruark@mlan.net](mailto:pruark@mlan.net).

**Percentage Change in Michigan Counties With Largest Increases  
 Fourth Quarter 2003 — Fourth Quarter 2004**



Sources: Unemployment: Bureau of Labor Statistics, Local Area Unemployment Statistics; Public Assistance: Michigan Department of Human Services.