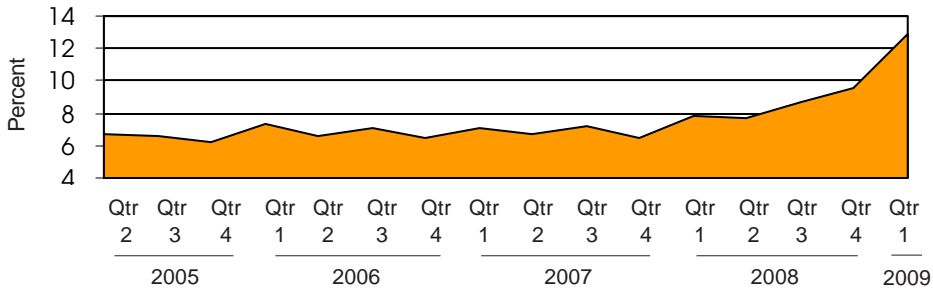
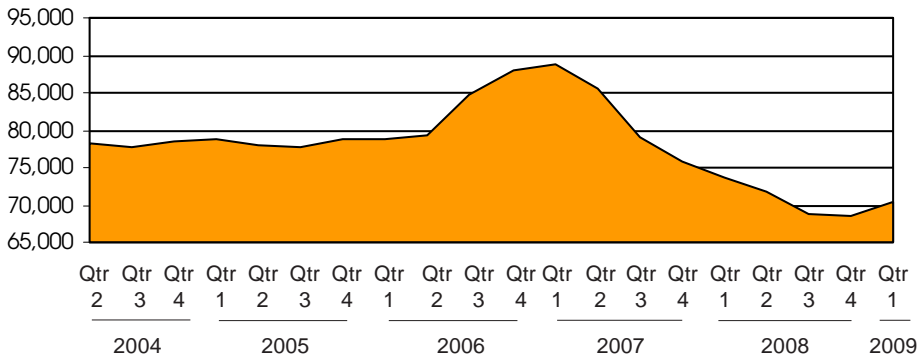


Michigan's Unemployment Rate Over the Past Four Years
(not seasonally adjusted)



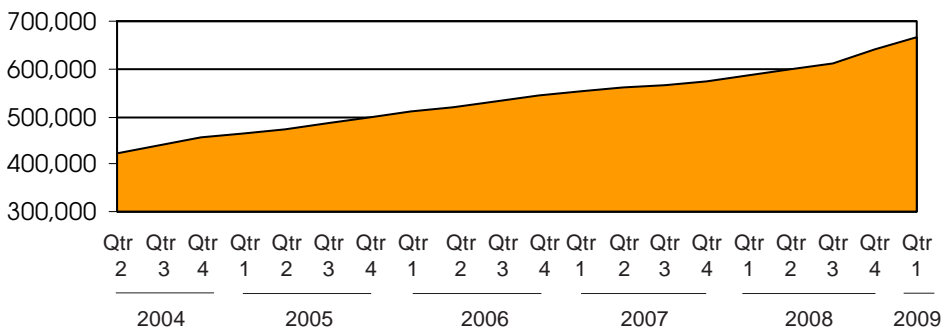
Source: Bureau of Labor Statistics

Family Independence Program Cases During
the Past Five Years (regular FIP only)



Source: Michigan Department of Human Services

Food Assistance Households Over the Past Five Years



Source: Michigan Department of Human Services

35 counties have unemployment over 15 percent, 61 counties decrease FIP cases


Unemployment

During the first quarter of 2009, all 83 counties saw an increase in their unemployment rates compared to the same quarter in 2008, with rates in 39 counties increasing by more than five percentage points. Thirty-five counties had an unemployment rate of 15 percent or more, and six counties had a rate of 20 percent or more. There were 107,200 manufacturing jobs lost over the year, an 18 percent decrease.

Public Assistance

Despite the continued economic distress, the number of Michigan families receiving relief through the Family Independence Program (FIP) decreased in 61 counties. In 22 counties, including the significantly populated Eaton and Midland counties, the decrease was more than 20 percent. Fortunately, Food Assistance remains responsive to the the state's economic hardships; 668,000 households received Food Assistance during the first quarter, a 14 percent increase from last year. In 14 counties, the increase in Food assistance usage was more than 20 percent.

Note: The DHS did not publish application data for this quarter, and consequently the data cannot be included in this bulletin.

 Prepared by: Michigan League for Human Services	Unemployment (data not seasonally adjusted)						Food Assistance Program					
	Unemployment Rate			Number Unemployed			Total Number of Applications			Average Number of Households Receiving Food Assistance Per Month		
	County	Qtr 1 2008	Qtr 1 2009	+/- points	Qtr 1 2008	Qtr 1 2009	% change	Qtr 1 2008	Qtr 1 2009	% change	Qtr 1 2008	Qtr 1 2009
Michigan¹	7.8	12.9	5.1	383,629	619,651	61.5	165,296	*	*	585,773	668,052	14.0
Alcona	13.1	18.9	5.8	542	791	45.8	133	*	*	594	635	6.8
Alger	10.8	15.2	4.4	460	639	38.8	94	*	*	392	447	13.9
Allegan	7.3	12.7	5.4	4,033	6,835	69.5	1,387	*	*	4,395	5,240	19.2
Alpena	9.6	14.1	4.5	1,419	2,111	48.8	558	*	*	2,399	2,635	9.9
Antrim	9.8	15.9	6.1	1,116	1,802	61.5	308	*	*	1,059	1,267	19.7
Arenac	12.0	18.8	6.8	942	1,463	55.2	271	*	*	1,262	1,415	12.2
Baraga	14.0	24.2	10.2	601	1,099	82.9	138	*	*	500	517	3.3
Barry	6.1	9.9	3.8	1,848	2,868	55.2	710	*	*	2,503	2,938	17.4
Bay	7.7	11.6	4.0	4,168	6,211	49.0	1,836	*	*	7,215	7,992	10.8
Benzie	10.5	15.6	5.1	920	1,367	48.6	297	*	*	775	963	24.3
Berrien	7.6	12.0	4.3	6,040	9,195	52.2	2,955	*	*	10,665	11,447	7.3
Branch	7.7	14.2	6.5	1,684	3,120	85.2	693	*	*	2,522	2,958	17.3
Calhoun	7.1	11.4	4.3	4,900	7,556	54.2	2,984	*	*	11,299	13,609	20.4
Cass	6.8	11.0	4.2	1,837	2,910	58.4	737	*	*	2,833	3,509	23.9
Charlevoix	10.7	16.4	5.7	1,459	2,220	52.1	288	*	*	937	1,122	19.7
Cheboygan	17.7	22.1	4.5	2,007	2,452	22.2	516	*	*	1,778	1,970	10.8
Chippewa	10.7	13.5	2.8	1,863	2,301	23.5	560	*	*	1,888	2,149	13.9
Clare	12.5	16.8	4.3	1,632	2,168	32.8	649	*	*	2,992	3,283	9.7
Clinton	5.8	9.3	3.5	2,200	3,435	56.1	557	*	*	1,970	2,472	25.5
Crawford	9.5	13.5	4.0	613	828	34.9	256	*	*	990	1,099	11.0
Delta	9.1	12.7	3.5	1,787	2,450	37.1	559	*	*	2,384	2,676	12.2
Dickinson	6.3	10.9	4.5	917	1,545	68.4	310	*	*	1,174	1,388	18.2
Eaton	5.7	10.5	4.8	3,352	6,119	82.5	1,393	*	*	3,927	4,470	13.8
Emmet	12.0	16.2	4.2	2,304	3,121	35.4	516	*	*	1,539	1,830	18.9
Genesee	9.8	14.6	4.9	20,036	28,853	44.0	11,461	*	*	37,902	41,880	10.5
Gladwin	10.9	16.7	5.7	1,147	1,746	52.3	402	*	*	1,891	2,088	10.4
Gogebic	7.8	11.7	3.9	611	906	48.4	259	*	*	1,177	1,330	13.0
Gr. Traverse	8.0	12.0	3.9	3,799	5,572	46.7	1,494	*	*	4,138	4,835	16.8
Gratiot	8.9	13.9	5.0	1,755	2,717	54.8	654	*	*	2,282	2,547	11.6
Hillsdale	9.7	17.5	7.8	2,035	3,712	82.4	608	*	*	2,445	2,914	19.2
Houghton	8.1	10.7	2.6	1,418	1,856	30.9	380	*	*	1,879	2,019	7.5
Huron	9.7	16.1	6.4	1,565	2,575	64.6	345	*	*	1,776	1,959	10.3
Ingham	6.4	10.9	4.5	9,847	16,391	66.5	5,201	*	*	18,243	20,962	14.9
Ionia	7.8	13.9	6.2	2,372	4,153	75.1	882	*	*	3,194	3,605	12.9
Iosco	12.5	18.9	6.4	1,310	2,014	53.8	424	*	*	2,134	2,391	12.0
Iron	8.7	11.8	3.1	513	687	33.8	155	*	*	669	743	11.1
Isabella	5.6	7.8	2.2	2,164	2,958	36.7	1,453	*	*	4,560	6,727	47.5
Jackson	7.9	12.7	4.8	6,111	9,454	54.7	2,810	*	*	9,302	10,456	12.4
Kalamazoo	5.4	9.0	3.6	7,228	11,529	59.5	4,263	*	*	15,730	17,822	13.3
Kalkaska	9.3	14.1	4.8	777	1,173	51.1	309	*	*	1,223	1,343	9.8
Kent	6.1	10.2	4.1	19,752	31,566	59.8	10,632	*	*	32,322	37,077	14.7
Keweenaw	12.6	15.8	3.2	132	167	26.4	24	*	*	94	104	11.0
Lake	11.4	18.6	7.2	443	704	59.1	261	*	*	1,203	1,282	6.5
Lapeer	10.4	17.4	7.0	4,584	7,591	65.6	906	*	*	3,162	3,872	22.4
Leelanau	6.9	9.7	2.8	758	1,030	35.9	148	*	*	414	491	18.6
Lenawee	9.4	15.2	5.8	4,633	7,306	57.7	1,387	*	*	4,477	5,558	24.1
Livingston	6.3	10.7	4.5	5,852	9,603	64.1	1,281	*	*	3,203	4,227	32.0
Luce	9.2	12.5	3.4	254	343	34.7	103	*	*	440	480	9.1
Mackinac	22.7	27.8	5.2	1,201	1,462	21.8	160	*	*	416	540	29.9
Macomb	7.9	14.5	6.5	32,470	58,692	80.8	9,863	*	*	31,266	38,623	23.5

¹In some cases the Michigan number is slightly different from the county total.

*Data is unavailable or cannot be calculated.

Data sources: Unemployment: Bureau of Labor Statistics, Local Area Unemployment Statistics; Public Assistance: Michigan Department of Human Services.


Family Independence Program (Cash Assistance)									Medicaid						
Total Number of Applications			Average Number of Families Receiving Cash Assistance Per Month			Percent of Cases Without Earned Income, Out of Total Cases Expected to Work		Total Number of Applications			Average Number of Persons Eligible for Medicaid ONLY (Excludes FIP & SSI Recipients)			Percent of Population Eligible for Medicaid (Includes FIP & SSI Recipients) ²	
44,825	*	*	79,266	74,795	-5.6	58%	66%	178,041	*	*	1,109,195	1,252,841	13.0	15.3%	16.8%
26	*	*	23	25	10.3	17%	63%	247	*	*	1,347	1,353	0.4	14.2%	14.1%
26	*	*	23	25	7.2	0%	21%	182	*	*	1,144	1,210	5.7	14.4%	15.4%
448	*	*	399	394	-1.3	53%	54%	2,018	*	*	12,364	14,253	15.3	13.2%	14.8%
109	*	*	199	199	-0.2	49%	46%	603	*	*	4,478	4,807	7.3	19.9%	21.3%
87	*	*	67	51	-24.8	0%	50%	491	*	*	3,219	3,547	10.2	15.6%	16.8%
63	*	*	105	96	-8.6	43%	50%	397	*	*	2,515	2,683	6.7	19.8%	21.1%
39	*	*	51	48	-4.6	37%	59%	153	*	*	1,114	1,229	10.3	16.8%	18.0%
218	*	*	225	239	6.1	41%	**	900	*	*	5,865	6,604	12.6	12.0%	13.4%
498	*	*	757	696	-8.1	47%	53%	1,820	*	*	13,150	14,262	8.5	16.4%	17.3%
81	*	*	49	50	2.0	74%	59%	416	*	*	2,142	2,443	14.1	14.4%	16.3%
938	*	*	1,443	1,226	-15.0	58%	67%	3,798	*	*	20,612	22,660	9.9	18.1%	19.2%
294	*	*	306	295	-3.8	54%	56%	1,118	*	*	6,263	7,116	13.6	17.1%	19.1%
966	*	*	1,711	1,777	3.9	55%	**	3,250	*	*	18,039	21,151	17.3	19.5%	22.2%
223	*	*	296	311	5.2	46%	69%	974	*	*	6,584	7,624	15.8	16.5%	18.7%
91	*	*	62	49	-20.9	**	**	391	*	*	2,829	3,129	10.6	12.4%	13.6%
150	*	*	137	101	-26.3	36%	44%	679	*	*	4,289	4,676	9.0	19.3%	20.9%
133	*	*	172	152	-12.0	43%	49%	864	*	*	4,478	4,797	7.1	14.7%	15.4%
198	*	*	300	262	-12.7	61%	69%	930	*	*	5,211	5,726	9.9	23.3%	24.9%
148	*	*	126	112	-10.8	28%	33%	688	*	*	4,653	5,558	19.4	8.0%	9.3%
86	*	*	82	61	-26.0	39%	60%	373	*	*	2,147	2,292	6.8	18.3%	19.1%
156	*	*	158	139	-12.0	41%	54%	749	*	*	5,000	5,544	10.9	16.7%	18.2%
86	*	*	50	50	0.0	60%	17%	472	*	*	3,562	3,845	7.9	15.4%	16.5%
350	*	*	356	251	-29.4	41%	**	1,486	*	*	9,013	10,243	13.6	10.4%	11.3%
98	*	*	62	59	-4.8	20%	59%	612	*	*	4,374	5,047	15.4	15.0%	17.0%
3,224	*	*	6,403	6,215	-2.9	65%	74%	12,411	*	*	57,527	64,881	12.8	20.3%	22.2%
146	*	*	161	187	16.2	45%	59%	566	*	*	3,770	4,157	10.3	18.3%	20.5%
51	*	*	161	173	7.2	68%	55%	282	*	*	2,213	2,242	1.3	18.5%	19.3%
345	*	*	175	143	-18.3	33%	70%	1,907	*	*	10,156	11,529	13.5	13.8%	15.2%
212	*	*	256	187	-26.9	40%	47%	961	*	*	5,697	6,485	13.8	17.3%	18.6%
209	*	*	227	240	5.6	55%	60%	814	*	*	5,762	6,648	15.4	15.9%	18.1%
72	*	*	85	72	-15.3	53%	47%	459	*	*	4,692	4,940	5.3	15.7%	16.4%
55	*	*	131	102	-22.6	54%	64%	528	*	*	4,449	4,946	11.2	16.4%	18.0%
1,359	*	*	1,506	1,457	-3.3	42%	**	4,869	*	*	30,657	33,990	10.9	14.6%	15.9%
300	*	*	254	241	-4.9	47%	70%	1,104	*	*	7,377	8,184	10.9	14.1%	15.5%
111	*	*	143	150	4.7	65%	61%	773	*	*	4,184	4,496	7.5	19.7%	21.5%
54	*	*	59	47	-20.3	37%	56%	327	*	*	1,938	1,998	3.1	19.4%	20.0%
216	*	*	284	196	-30.9	31%	47%	1,032	*	*	7,030	7,890	12.2	13.3%	14.2%
779	*	*	1,058	998	-5.7	51%	67%	3,133	*	*	18,462	21,057	14.1	15.2%	17.1%
1,121	*	*	1,807	1,726	-4.5	42%	53%	4,327	*	*	25,918	28,981	11.8	14.6%	15.8%
93	*	*	64	59	-8.8	17%	58%	435	*	*	3,018	3,335	10.5	20.8%	22.7%
2,716	*	*	4,284	4,504	5.1	51%	64%	10,548	*	*	68,966	78,963	14.5	15.3%	17.1%
5	*	*	5	-	-100.0	0%	100%	24	*	*	217	262	20.9	12.6%	13.8%
72	*	*	96	82	-14.9	40%	42%	332	*	*	1,956	2,136	9.2	24.5%	26.3%
298	*	*	271	269	-0.5	60%	64%	1,232	*	*	8,646	10,228	18.3	11.2%	13.1%
38	*	*	18	11	-37.7	**	**	180	*	*	1,274	1,345	5.5	6.5%	6.8%
413	*	*	419	419	-0.2	32%	54%	1,791	*	*	10,836	12,676	17.0	13.3%	15.2%
364	*	*	193	214	10.7	30%	42%	1,575	*	*	9,114	11,118	22.0	5.6%	6.8%
29	*	*	46	43	-6.5	59%	78%	206	*	*	997	1,082	8.6	20.1%	21.7%
35	*	*	36	26	-26.9	0%	70%	267	*	*	1,218	1,319	8.3	13.6%	14.7%
2,512	*	*	3,137	3,260	3.9	60%	66%	10,108	*	*	75,428	84,903	12.6	11.3%	12.6%

¹In some cases the Michigan number is slightly different from the county total.

² Population figures based on U.S. Census Bureau county estimates from July of the previous year

*Data is unavailable or cannot be calculated.

Data sources: Unemployment: Bureau of Labor Statistics, Local Area Unemployment Statistics; Public Assistance: Michigan Department of Human Services.

 Prepared by: Michigan League for Human Services	Unemployment (data not seasonally adjusted)						Food Assistance Program					
	Unemployment Rate			Number Unemployed			Total Number of Applications			Average Number of Households Receiving Food Assistance Per Month		
	Qtr 1 2008	Qtr 1 2009	+/- points	Qtr 1 2008	Qtr 1 2009	% change	Qtr 1 2008	Qtr 1 2009	% change	Qtr 1 2008	Qtr 1 2009	% change
Manistee	9.6	13.8	4.2	1,101	1,552	41.0	381	*	*	1,566	1,742	11.3
Marquette	7.3	10.7	3.4	2,624	3,852	46.8	754	*	*	3,240	3,772	16.4
Mason	9.5	14.9	5.4	1,359	2,103	54.8	497	*	*	1,866	2,087	11.8
Mecosta	8.7	13.4	4.7	1,739	2,642	51.9	870	*	*	3,859	4,656	20.7
Menominee	6.2	11.3	5.1	801	1,467	83.2	291	*	*	1,222	1,447	18.4
Midland	6.0	8.9	2.9	2,563	3,763	46.8	943	*	*	3,973	4,328	8.9
Missaukee	10.8	16.6	5.8	706	1,061	50.4	226	*	*	764	875	14.5
Monroe	7.7	13.8	6.1	5,878	10,397	76.9	1,848	*	*	5,692	7,014	23.2
Montcalm	11.4	16.3	5.0	3,027	4,253	40.5	987	*	*	3,872	4,431	14.5
Montmorency	16.0	22.1	6.1	642	891	38.8	158	*	*	823	866	5.2
Muskegon	7.7	14.2	6.5	6,776	12,370	82.6	4,074	*	*	16,594	18,267	10.1
Newaygo	8.8	14.0	5.2	2,032	3,120	53.5	796	*	*	3,107	3,480	12.0
Oakland	6.4	11.0	4.7	38,934	64,722	66.2	11,321	*	*	33,608	39,619	17.9
Oceana	12.1	19.0	6.9	1,633	2,521	54.4	494	*	*	1,885	2,159	14.5
Ogemaw	10.6	14.6	4.0	998	1,363	36.5	365	*	*	2,124	2,270	6.8
Ontonagon	8.9	16.5	7.5	296	533	80.3	61	*	*	410	471	15.0
Osceola	9.3	15.8	6.5	880	1,483	68.5	338	*	*	1,577	1,777	12.7
Oscoda	13.0	22.5	9.5	505	876	73.5	154	*	*	801	880	9.9
Otsego	10.8	15.1	4.3	1,286	1,752	36.3	436	*	*	1,608	1,893	17.7
Ottawa	6.2	12.0	5.8	8,427	15,682	86.1	2,288	*	*	6,303	8,081	28.2
Presque Isle	18.8	23.9	5.1	1,101	1,403	27.4	130	*	*	672	788	17.3
Roscommon	12.1	15.8	3.7	1,227	1,538	25.3	464	*	*	2,240	2,523	12.6
Saginaw	8.2	12.3	4.1	7,838	11,339	44.7	4,162	*	*	16,595	18,203	9.7
Saint Clair	9.9	17.9	8.0	8,203	14,821	80.7	2,796	*	*	9,764	11,534	18.1
Saint Joseph	7.5	13.8	6.3	2,310	4,245	83.8	1,145	*	*	3,542	4,361	23.1
Sanilac	11.0	18.9	7.9	2,369	3,982	68.1	658	*	*	2,884	3,335	15.6
Schoolcraft	13.8	17.5	3.7	538	678	26.0	110	*	*	579	615	6.2
Shiawassee	9.6	15.5	5.8	3,454	5,464	58.2	1,218	*	*	4,044	4,735	17.1
Tuscola	10.0	16.7	6.7	2,822	4,612	63.4	745	*	*	2,936	3,351	14.1
Van Buren	8.5	13.4	4.9	3,430	5,318	55.1	1,515	*	*	4,981	5,533	11.1
Washtenaw	4.9	7.5	2.6	9,224	13,373	45.0	4,307	*	*	12,621	14,877	17.9
Wayne	8.8	14.5	5.8	76,094	124,531	63.7	45,543	*	*	173,789	190,815	9.8
Wexford	9.8	18.1	8.3	1,401	2,623	87.2	651	*	*	2,694	3,086	14.6

FACT

Workers who are unemployed or underemployed can build their skills by participating in the No Worker Left Behind program. More information is available at the Michigan Works! Agencies.

¹In some cases the Michigan number is slightly different from the county total.

*Data is unavailable or cannot be calculated.

Data sources: Unemployment: Bureau of Labor Statistics, Local Area Unemployment Statistics; Public Assistance: Michigan Department of Human Services.

Family Independence Program (Cash Assistance)									Medicaid						
Total Number of Applications			Average Number of Families Receiving Cash Assistance Per Month			Percent of Cases Without Earned Income, Out of Total Cases Expected to Work		Total Number of Applications			Average Number of Persons Eligible for Medicaid ONLY (Excludes FIP & SSI Recipients)			Percent of Population Eligible for Medicaid (Includes FIP & SSI Recipients) ²	
119	*	*	141	147	4.3	55%	59%	388	*	*	3,074	3,231	5.1	16.1%	17.0%
139	*	*	198	189	-4.6	73%	54%	919	*	*	6,660	7,442	11.7	12.5%	13.6%
152	*	*	183	148	-19.3	31%	52%	602	*	*	4,063	4,651	14.5	17.8%	19.6%
193	*	*	195	179	-8.2	50%	**	842	*	*	5,984	6,887	15.1	17.8%	20.1%
78	*	*	78	72	-8.5	35%	53%	420	*	*	2,906	3,320	14.3	14.3%	16.0%
261	*	*	362	244	-32.5	47%	50%	1,215	*	*	8,811	9,449	7.2	13.3%	13.8%
70	*	*	61	45	-25.8	**	**	290	*	*	1,934	2,173	12.3	15.2%	16.5%
539	*	*	700	689	-1.6	41%	57%	2,043	*	*	12,523	14,933	19.2	10.7%	12.3%
274	*	*	311	244	-21.5	60%	63%	1,277	*	*	9,106	10,001	9.8	18.1%	19.3%
36	*	*	52	39	-25.0	19%	94%	260	*	*	1,624	1,783	9.8	19.8%	20.9%
1,290	*	*	2,937	2,981	1.5	64%	71%	3,983	*	*	24,115	26,325	9.2	21.5%	22.9%
196	*	*	292	259	-11.4	37%	54%	1,111	*	*	7,255	8,144	12.3	18.8%	20.4%
3,045	*	*	3,653	3,582	-1.9	51%	60%	12,112	*	*	75,631	86,345	14.2	8.3%	9.3%
168	*	*	276	261	-5.6	62%	71%	730	*	*	4,712	5,381	14.2	22.1%	24.6%
100	*	*	189	130	-31.3	41%	62%	503	*	*	3,929	4,217	7.3	23.9%	24.9%
15	*	*	28	22	-22.6	80%	29%	121	*	*	928	969	4.4	16.7%	17.6%
114	*	*	123	107	-13.0	**	**	461	*	*	3,302	3,626	9.8	18.4%	19.8%
47	*	*	67	42	-37.1	41%	67%	283	*	*	1,473	1,621	10.1	21.4%	22.4%
119	*	*	148	110	-25.7	27%	35%	534	*	*	3,830	4,339	13.3	19.0%	21.0%
633	*	*	469	490	4.3	38%	54%	2,837	*	*	19,614	23,122	17.9	8.8%	10.1%
43	*	*	55	39	-28.0	44%	52%	199	*	*	1,577	1,644	4.3	14.1%	14.7%
121	*	*	153	147	-3.9	30%	54%	549	*	*	4,054	4,489	10.7	20.1%	22.1%
1,273	*	*	2,587	2,606	0.8	52%	64%	4,145	*	*	25,846	28,593	10.6	19.8%	21.5%
840	*	*	1,119	929	-17.0	46%	64%	3,254	*	*	18,984	22,720	19.7	14.4%	16.5%
404	*	*	391	424	8.3	55%	69%	1,526	*	*	9,488	11,195	18.0	18.5%	21.6%
142	*	*	189	195	3.2	54%	60%	828	*	*	6,797	7,487	10.1	18.4%	20.5%
38	*	*	40	44	9.2	67%	71%	196	*	*	1,293	1,355	4.8	19.1%	20.9%
341	*	*	366	385	5.0	39%	52%	1,430	*	*	9,218	10,283	11.6	15.9%	17.9%
167	*	*	270	265	-2.0	31%	62%	1,003	*	*	7,557	8,525	12.8	16.4%	18.2%
424	*	*	548	484	-11.7	52%	64%	1,954	*	*	11,543	13,084	13.3	19.0%	20.8%
902	*	*	1,243	1,131	-9.0	48%	49%	4,012	*	*	22,609	25,654	13.5	8.5%	9.4%
12,000	*	*	33,147	30,284	-8.6	63%	67%	43,315	*	*	267,154	300,976	12.7	21.8%	23.5%
201	*	*	255	191	-25.1	46%	48%	897	*	*	5,704	6,726	17.9	22.7%	25.6%

FACT

The availability and effectiveness of safety net programs to help Michigan's working families in times of need depends on a stable state budget.

¹In some cases the Michigan number is slightly different from the county total.

² Population figures based on U.S. Census Bureau county estimates from July of the previous year

*Data is unavailable or cannot be calculated.

Data sources: Unemployment: Bureau of Labor Statistics, Local Area Unemployment Statistics; Public Assistance: Michigan Department of Human Services.

Employment Trends by Selected Industries in Michigan
(data not seasonally adjusted, rounded to the nearest hundred)

Industry	Avg 2008 Qtr 1	Avg 2009 Qtr1	% Change	Industry	Avg 2008 Qtr 1	Avg 2009 Qtr 1	% Change
TOTAL NONFARM	4,155,300	3,887,800	-6.4	Wholesale Electronic Markets and Agents and Brokers	24,200	21,300	-12.0
TOTAL PRIVATE	3,494,800	3,229,900	-7.6	•Retail Trade	475,600	453,400	-4.7
GOODS PRODUCING	741,700	616,200	-16.9	Motor Vehicle and Parts Dealers	55,600	50,500	-9.2
SERVICE-PROVIDING	3,413,600	3,271,700	-4.2	Building Material and Garden Equip. and Supplies Dealers	39,200	37,700	-3.8
Natural Resources and Mining	7,100	7,000	-1.4	Food and Beverage Stores	78,500	76,500	-2.5
Construction	40,000	121,700	-13.1	Health and Personal Care	33,500	32,500	-3.0
Construction of Buildings	33,000	28,800	-12.7	Gasoline Stations	24,000	23,200	-3.3
Heavy and Civil Engineering	12,600	12,900	2.4	Clothing and Clothing Accessories	40,400	36,300	-10.1
Specialty Trade Contractors	94,300	80,000	-15.2	Sporting Goods, Hobby, Book, and Music Stores	23,100	21,700	-6.1
Manufacturing	594,700	487,500	-18.0	General Merchandise Stores	111,300	110,800	-0.4
•Durable Goods	454,400	364,600	-19.8	Miscellaneous Store Retail	24,800	23,400	-5.6
Nonmetallic Mineral Products	12,200	11,500	-5.7	•Transportation & Warehousing & Utilities	124,300	112,900	-9.2
Primary Metal Manufacturing	24,100	22,200	-7.9	Air Transportation	14,500	12,800	-11.7
Fabricated Metal Product	78,500	67,100	-14.5	Rail Transportation	4,500	4,500	0.0
Machinery Manufacturing	69,600	59,800	-14.1	Truck Transportation	38,900	33,800	-13.1
Computer and Electronic Products	21,200	20,900	-1.4	Warehousing and Storage	13,000	11,900	-8.5
Motor Vehicle Manufacturing	53,000	31,700	-40.2	Information	62,600	59,200	-5.4
Motor Vehicle Parts Manufacturing	119,100	83,800	-29.6	Publishing Industries	21,500	19,600	-8.8
Furniture and Related Products	24,300	22,500	-7.4	Telecommunications	22,600	21,600	-4.4
•Non-Durable Goods	140,200	122,900	-12.3	Financial Activities	206,300	194,100	-5.9
Food Manufacturing	33,000	32,700	-0.9	Finance and Insurance	154,800	146,300	-5.5
Printing and Related Support Activities	17,000	16,000	-5.9	Real Estate	35,200	33,500	-4.8
Chemical Manufacturing	27,800	27,200	-2.2	Professional & Business Services	562,300	496,300	-11.7
Plastics and Rubber Products	38,600	34,600	-10.4	Legal Services	28,800	28,200	-2.1
Trade Transportation & Utilities	767,100	717,800	-6.4	Accounting, Tax Preparation, Bookkeeping & Payroll Services	34,800	33,500	-3.7
•Wholesale Trade	167,300	151,600	-9.4	Architectural Engineering	65,100	55,400	-14.9
Merchant Wholesalers Durable Goods	95,900	85,000	-11.4				
Merchant Wholesalers Nondurable Goods	47,200	45,300	-4.0				

Note: Industry details and subtotals may not sum to totals due to rounding.

Source: Department of Labor and Economic Growth/Office of Labor Market Information, Current Employment Statistics Section - (800) 225-3732

Employment Trends by Selected Industries in Michigan
(data not seasonally adjusted, rounded to the nearest hundred)

Industry	Avg 2008	Avg 2009	%	Industry	Avg 2008	Avg 2009	%
	Qtr 1	Qtr1	Change		Qtr 1	Qtr 1	Change
Computer Systems Design	40,400	37,100	-8.2	Government	660,500	658,000	-0.4
Management, Scientific and Technical Consulting Services	19,000	16,500	-13.2	•Federal Government	53,300	53,000	-0.6
Scientific Research and Development Services	20,800	18,800	-9.6	U.S. Postal Service	26,400	25,300	-4.2
Advertising and Related	14,800	14,000	-5.4	•State Government	174,100	179,500	3.1
Management of Companies	55,300	50,700	-8.3	State Government Educational Services	105,000	109,100	3.9
Administrative & Support Services	260,500	221,700	-14.9	State Government Hospital Services	16,300	16,600	1.8
Educational and Health Services	604,200	613,200	1.5	•Local Government	433,100	425,500	-1.8
•Educational Services (see also Government)	81,700	81,800	0.1	Local Government Educational Services	251,700	244,800	-2.7
•Health Care & Social Assistance	522,600	531,400	1.7	Local Government Hospitals	13,700	13,700	0.0
Ambulatory Health Care Services	177,400	182,200	2.7	Local Government Elementary and Secondary Schools	227,500	220,800	-2.9
Offices of Physicians	69,600	69,500	-0.1	Local Government Junior Colleges	23,500	23,000	-2.1
Outpatient Care Centers	15,000	15,500	3.3				
Home Health Care Service	29,900	31,500	5.4				
Hospitals	189,400	191,400	1.1				
Nursing and Residential Care	94,000	95,300	1.4				
—Nursing Care Facilities	42,300	42,200	-0.2				
Social Assistance	61,800	62,600	1.3				
—Individual and Family Services	27,600	28,600	3.6				
Leisure and Hospitality	376,300	363,500	-3.4				
Performing Arts Spectator Activities	8,500	8,900	4.7				
Amusement, Gambling & Recreation	39,900	36,700	-8.0				
Accommodation	32,000	30,200	-5.6				
Food Services and Drinking	291,400	283,600	-2.7				
Other Services	174,200	169,600	-2.6				
Repair and Maintenance	38,100	35,500	-6.8				
Personal and Laundry Services	39,500	37,300	-5.6				
Religious Grantmaking Civic Professional	96,600	96,800	0.2				

VISIT OUR WEBSITE FOR MORE INFORMATION!

The "Work and Wages" section of the Michigan League for Human Services website has information on Workforce Development, Work Supports, Unemployment, and Self-Sufficiency. It also includes back issues of the Economic Security Bulletin. Go to www.MiLHS.org and click the "Work and Wages" tab at the left.

Note: Industry details and subtotals may not sum to totals due to rounding.

Source: Department of Labor and Economic Growth/Office of Labor Market Information, Current Employment Statistics Section - (800) 225-3732



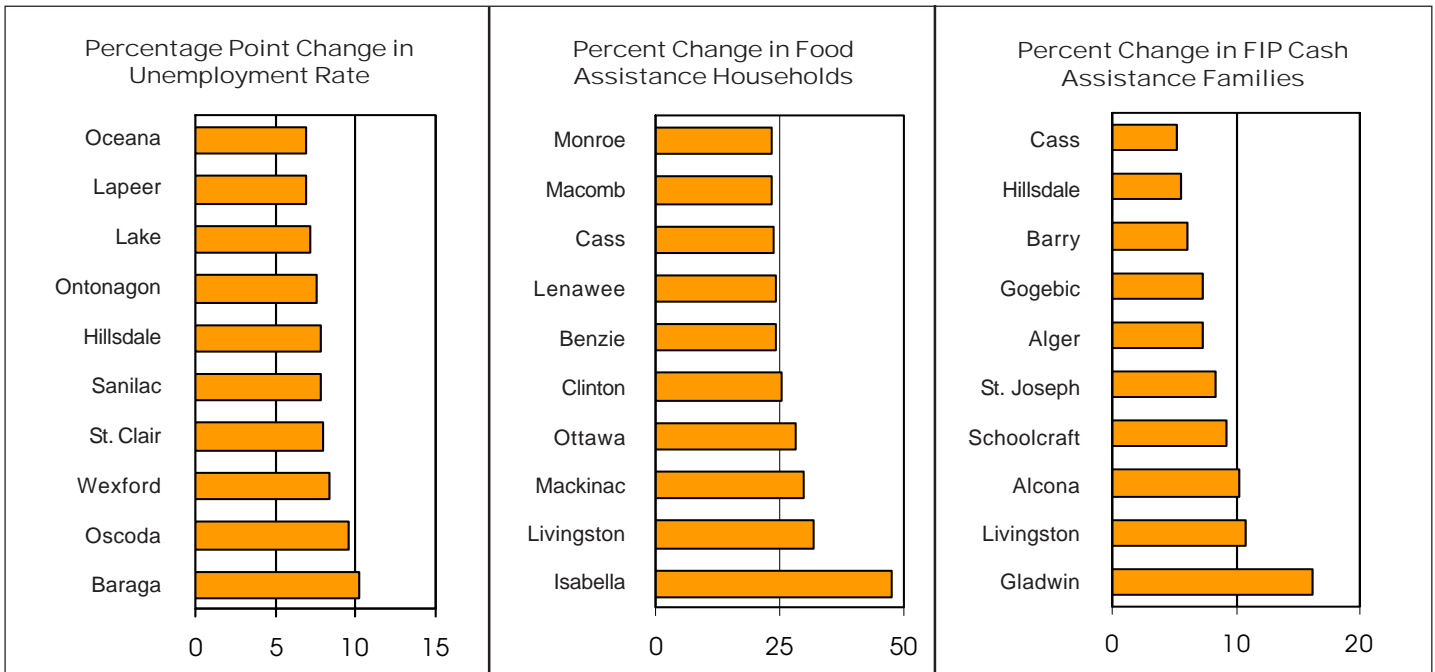
Michigan League for Human Services

1115 South Pennsylvania Avenue, Suite 202
 Lansing, MI 48912-1658
 (517) 487-5436 — Fax (517) 371-4546
 Web site: www.milhs.org

A United Way Agency

Nonprofit
 Organization
 U.S. Postage
Paid
 Lansing, MI
 Permit #1421

Percentage Change in Michigan Counties With Largest Increases
 First Quarter 2008 — First Quarter 2009



Sources: Unemployment: Bureau of Labor Statistics, Local Area Unemployment Statistics; Public Assistance: Michigan Department of Human Services