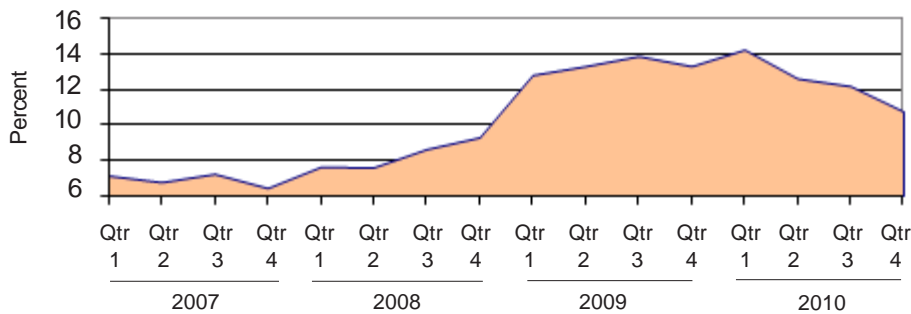
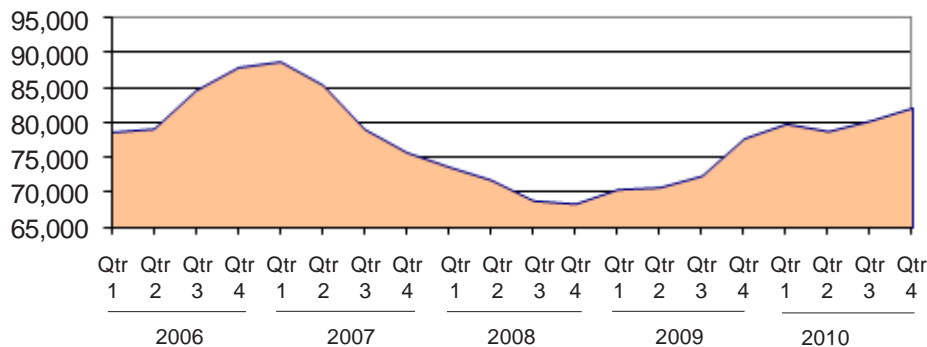


Michigan's Unemployment Rate Over the Past Four Years
(not seasonally adjusted)



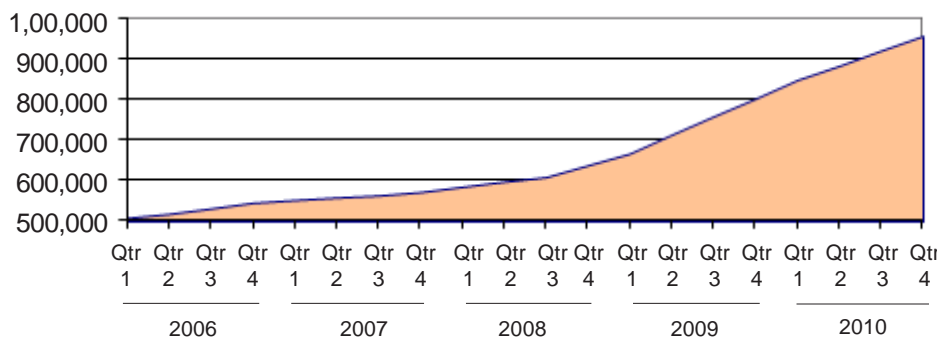
Source: Bureau of Labor Statistics

Family Independence Program Cases During
the Past Five Years (Regular FIP only)



Source: Michigan Department of Human Services

Food Assistance Households During the Past Five Years



Source: Michigan Department of Human Services


Unemployment Decreases Slightly While Public Assistance Cases Increase

Unemployment

All counties saw a decrease in their unemployment rate between the fourth quarter of 2009 and that of 2010. Although the statewide decrease was less than 1 point, there was a decrease of at least 2 points in 53 counties and two counties had a decrease of more than 4 points. Although there was a decrease in total jobs during that period, manufacturing jobs increased by nearly 10,000 jobs.

Public Assistance

Nearly all counties increased their Food Assistance caseloads by at least 5 percent, and 19 counties increased it by more than 20 percent. State-wide, 958,850 household received Food Assistance during the fourth quarter of 2010.

 Prepared by: Michigan League for Human Services	Unemployment (data not seasonally adjusted)						Food Assistance Program				
	Unemployment Rate			Number Unemployed			Average Number of Households Per Month			Percent of Population Receiving Assistance ¹	
	Qtr 4 2009	Qtr 4 2010	+/- points	Qtr 4 2009	Qtr 4 2010	% change	Qtr 4 2009	Qtr 4 2010	% change	Qtr 4 2009	Qtr 4 2010
Michigan²	13.3	10.8	-2.6	641,353	510,567	-20.4	803,950	958,850	19.3	16.8%	19.2%
Alcona	19.7	17.3	-2.4	799	656	-17.9	737	910	23.5	14.0%	16.5%
Alger	14.6	12.6	-2.0	608	515	-15.3	549	624	13.7	11.8%	13.5%
Allegan	13.4	10.6	-2.8	7,203	5,583	-22.5	6,345	7,186	13.3	13.4%	14.7%
Alpena	14.3	11.8	-2.5	2,102	1,660	-21.0	3,006	3,455	14.9	19.3%	22.4%
Antrim	17.1	14.7	-2.3	1,872	1,532	-18.1	1,460	1,698	16.3	14.5%	16.1%
Arenac	17.9	15.4	-2.5	1,348	1,101	-18.3	1,576	1,721	9.2	20.3%	21.9%
Baraga	25.2	21.0	-4.2	1,107	852	-23.0	570	692	21.3	13.9%	16.2%
Barry	10.7	8.6	-2.2	3,127	2,473	-20.9	3,524	3,925	11.4	13.8%	14.7%
Bay	12.6	10.6	-2.0	6,835	5,649	-17.4	9,357	10,432	11.5	17.5%	19.1%
Benzie	15.3	14.1	-1.1	1,325	1,210	-8.7	1,079	1,221	13.1	13.8%	15.2%
Berrien	13.6	11.4	-2.2	10,463	8,625	-17.6	13,743	15,822	15.1	18.0%	20.1%
Branch	13.9	11.4	-2.6	2,912	2,306	-20.8	3,578	3,949	10.4	17.8%	19.3%
Calhoun	11.8	9.9	-1.9	8,164	6,696	-18.0	15,777	17,170	8.8	23.2%	24.7%
Cass	11.9	10.7	-1.2	3,028	2,695	-11.0	4,112	4,631	12.6	18.8%	20.7%
Charlevoix	16.1	13.9	-2.2	2,144	1,803	-15.9	1,417	1,710	20.7	12.6%	14.9%
Cheboygan	15.1	12.9	-2.2	1,678	1,348	-19.6	2,129	2,409	13.2	17.6%	19.7%
Chippewa	13.5	12.4	-1.2	2,304	2,076	-9.9	2,656	3,110	17.1	14.0%	16.2%
Clare	17.2	14.5	-2.7	2,205	1,778	-19.3	3,745	4,163	11.2	25.7%	28.1%
Clinton	9.7	7.5	-2.2	3,626	2,780	-23.3	3,001	3,654	21.7	8.7%	10.3%
Crawford	14.7	12.8	-1.9	921	781	-15.2	1,244	1,388	11.6	18.3%	20.3%
Delta	13.1	11.4	-1.7	2,492	2,120	-14.9	2,965	3,435	15.9	16.0%	17.9%
Dickinson	11.9	10.0	-1.9	1,663	1,375	-17.3	1,645	1,869	13.6	12.3%	13.9%
Eaton	10.3	7.7	-2.6	6,009	4,438	-26.1	5,642	6,885	22.0	11.4%	13.4%
Emmet	16.0	14.7	-1.3	3,095	2,772	-10.5	2,039	2,405	18.0	13.1%	14.6%
Genesee	15.2	12.4	-2.8	29,964	23,854	-20.4	49,355	56,441	14.4	23.9%	26.6%
Gladwin	17.5	14.9	-2.6	1,760	1,460	-17.0	2,336	2,668	14.2	19.2%	21.5%
Gogebic	13.7	12.6	-1.1	994	893	-10.2	1,550	1,766	14.0	18.4%	20.3%
Gr. Traverse	12.8	11.0	-1.9	6,065	5,079	-16.3	5,593	6,726	20.3	12.9%	15.2%
Gratiot	13.9	11.3	-2.6	2,701	2,170	-19.6	3,026	3,470	14.7	16.5%	18.4%
Hillsdale	17.1	13.5	-3.7	3,457	2,547	-26.3	3,407	3,760	10.4	17.6%	19.0%
Houghton	10.8	9.8	-1.0	1,919	1,721	-10.4	2,395	3,291	37.4	13.3%	16.4%
Huron	14.6	12.3	-2.3	2,229	1,812	-18.7	2,250	2,401	6.7	14.3%	15.6%
Ingham	11.6	9.4	-2.2	17,721	14,113	-20.4	26,580	33,859	27.4	18.0%	21.3%
Ionia	13.6	11.1	-2.5	4,027	3,235	-19.7	4,417	4,928	11.6	15.5%	17.2%
Iosco	19.1	15.8	-3.3	1,931	1,479	-23.4	2,835	3,117	10.0	22.2%	23.8%
Iron	13.2	10.9	-2.2	742	594	-19.9	883	995	12.7	15.7%	17.5%
Isabella	9.0	7.6	-1.4	3,483	2,924	-16.0	8,424	10,976	30.3	19.4%	23.9%
Jackson	14.3	11.3	-3.0	10,866	8,350	-23.2	12,900	14,965	16.0	17.5%	19.6%
Kalamazoo	10.7	9.0	-1.7	14,194	11,798	-16.9	22,571	28,282	25.3	17.2%	20.1%
Kalkaska	15.7	12.0	-3.7	1,318	969	-26.5	1,590	1,771	11.4	21.8%	23.7%
Kent	11.4	9.2	-2.1	35,515	28,597	-19.5	44,471	55,244	24.2	15.4%	18.2%
Keweenaw	16.5	15.1	-1.4	185	167	-10.1	122	143	17.2	11.4%	12.8%
Lake	17.4	14.7	-2.7	687	598	-12.9	1,518	1,695	11.7	27.7%	30.1%
Lapeer	17.4	13.4	-4.0	7,508	5,628	-25.0	4,795	5,659	18.0	12.6%	14.5%
Leelanau	10.6	10.2	-0.4	1,135	1,086	-4.3	653	849	30.1	6.8%	8.4%
Lenawee	15.6	12.8	-2.9	7,446	5,816	-21.9	6,689	7,836	17.1	15.1%	17.1%
Livingston	12.3	10.0	-2.3	11,024	8,961	-18.7	5,293	6,908	30.5	6.5%	8.0%
Luce	15.5	14.1	-1.4	409	366	-10.4	523	547	4.5	16.6%	16.7%
Mackinac	18.3	15.5	-2.8	988	805	-18.5	614	745	21.2	11.8%	14.2%
Macomb	15.5	12.3	-3.1	63,157	49,786	-21.2	48,644	61,395	26.2	12.7%	15.5%

¹ Population figures based on U.S. Census Bureau county estimates from July of the previous year.

² In some cases the Michigan number is slightly different from the county total.

Data sources: Unemployment: Bureau of Labor Statistics, Local Area Unemployment Statistics; Public Assistance: Michigan Department of Human Services.


Family Independence Program (Cash Assistance)			Child Day Care						Medicaid					
Average Number of Families Receiving Cash Assistance Per Month ³			Percent of Population Receiving Assistance ¹		Average Number of Children Receiving Care Per Month		Average Payment Per Child		Average Number of Persons Eligible for Medicaid ONLY (Excludes FIP & SSI Recipients)			Percent of Population Eligible for Medicaid (Includes FIP & SSI Recipients) ¹		
Qtr 4 2009	Qtr 4 2010	% change	Qtr 4 2009	Qtr 3 2010	Qtr 3 2009	Qtr 4 2010	Qtr 4 2009	Qtr 4 2010	Qtr 4 2009	Qtr 4 2010	% change	Qtr 4 2009	Qtr 4 2010	
80,999	86,075	6.3	2.2%	2.4%	69,426	54,094	\$312	\$286	1,348,618	1,448,459	7.4	18.1%	19.3%	
33	28	-14.3	0.7%	0.7%	20	30	\$168	\$205	1,410	1,501	6.4	15.3%	16.5%	
25	26	5.3	0.5%	0.6%	17	22	\$186	\$199	1,269	1,308	3.0	15.9%	16.7%	
454	428	-5.7	1.0%	0.9%	521	402	\$257	\$285	15,936	16,966	6.5	16.5%	17.3%	
231	222	-3.9	2.0%	2.0%	215	191	\$219	\$211	4,763	4,922	3.3	21.6%	22.5%	
53	51	-3.8	0.5%	0.5%	89	79	\$205	\$229	3,879	4,028	3.8	18.4%	19.3%	
75	96	27.9	1.2%	1.5%	113	68	\$208	\$216	2,843	2,901	2.0	21.9%	22.8%	
50	56	12.1	1.4%	1.7%	37	24	\$191	\$293	1,246	1,324	6.3	18.1%	19.2%	
234	192	-18.0	1.1%	0.9%	247	187	\$228	\$249	7,384	8,009	8.5	14.9%	15.9%	
694	685	-1.3	1.7%	1.6%	1,015	831	\$257	\$228	15,229	16,245	6.7	18.4%	19.4%	
35	38	10.6	0.5%	0.5%	67	37	\$274	\$277	2,655	2,719	2.4	17.5%	18.1%	
1,482	1,474	-0.5	2.5%	2.4%	1,332	1,177	\$303	\$277	24,570	25,842	5.2	20.8%	21.6%	
383	343	-10.5	2.4%	2.1%	298	229	\$251	\$272	7,483	8,021	7.2	20.5%	21.9%	
1,806	1,630	-9.7	3.5%	3.2%	1,252	974	\$274	\$281	22,567	23,989	6.3	23.2%	24.2%	
341	360	5.6	1.8%	1.9%	352	270	\$281	\$284	8,392	8,724	4.0	20.4%	21.3%	
46	38	-18.0	0.3%	0.3%	94	71	\$230	\$239	3,556	3,988	12.2	15.4%	17.3%	
92	103	12.3	0.8%	1.0%	105	95	\$231	\$229	4,730	4,858	2.7	21.0%	22.1%	
175	203	16.2	1.1%	1.3%	211	139	\$231	\$281	4,994	5,347	7.1	16.3%	17.4%	
283	279	-1.5	2.5%	2.5%	142	124	\$256	\$264	5,851	6,200	6.0	25.9%	27.4%	
126	107	-15.1	0.4%	0.4%	200	175	\$277	\$261	5,998	6,478	8.0	9.9%	10.6%	
63	66	5.3	1.1%	1.1%	65	64	\$242	\$200	2,460	2,620	6.5	20.3%	22.0%	
156	166	6.4	1.1%	1.2%	180	172	\$183	\$207	5,724	5,892	2.9	19.1%	19.8%	
61	59	-3.8	0.5%	0.5%	146	121	\$165	\$170	3,986	4,123	3.4	17.3%	17.9%	
278	293	5.1	0.6%	0.6%	494	504	\$297	\$255	11,487	12,673	10.3	12.6%	13.9%	
59	47	-21.3	0.4%	0.3%	158	107	\$219	\$231	5,028	5,190	3.2	16.9%	17.3%	
7,047	7,970	13.1	4.6%	5.3%	6,500	4,921	\$357	\$285	67,239	69,629	3.6	23.5%	25.1%	
169	183	8.3	1.6%	1.9%	127	103	\$213	\$184	4,282	4,514	5.4	21.0%	22.6%	
195	203	3.9	3.4%	3.5%	60	49	\$165	\$218	2,300	2,457	6.8	20.3%	21.6%	
153	183	19.1	0.4%	0.5%	391	324	\$247	\$245	11,870	12,856	8.3	15.8%	17.0%	
178	165	-7.3	1.1%	1.0%	239	194	\$235	\$238	6,790	7,088	4.4	19.3%	20.1%	
302	329	8.9	1.9%	2.0%	229	182	\$220	\$224	7,144	7,634	6.9	19.8%	21.2%	
93	83	-10.1	0.6%	0.6%	87	78	\$211	\$215	5,164	5,368	4.0	17.2%	17.7%	
114	109	-4.4	0.9%	0.8%	141	142	\$192	\$238	5,144	5,289	2.8	18.9%	19.5%	
1,767	1,705	-3.5	1.8%	1.7%	1,823	1,489	\$345	\$300	36,048	39,083	8.4	17.1%	18.2%	
312	267	-14.4	1.2%	1.1%	270	246	\$254	\$228	8,942	9,571	7.0	17.0%	18.2%	
161	167	3.5	1.5%	1.6%	114	103	\$211	\$225	4,727	4,796	1.5	22.6%	23.0%	
77	68	-12.1	1.8%	1.6%	35	30	\$144	\$181	2,001	2,091	4.5	21.4%	22.3%	
212	182	-14.1	0.7%	0.7%	304	272	\$248	\$244	8,220	9,021	9.7	15.0%	16.0%	
1,241	1,436	15.7	2.0%	2.4%	931	789	\$280	\$280	22,328	24,001	7.5	18.4%	19.9%	
2,153	2,407	11.8	2.4%	2.7%	1,841	1,643	\$305	\$289	30,504	32,239	5.7	17.0%	17.9%	
68	62	-8.8	1.0%	0.9%	81	78	\$215	\$237	3,555	3,702	4.1	24.1%	25.2%	
4,968	5,074	2.1	2.2%	2.2%	4,621	4,068	\$328	\$283	85,323	92,316	8.2	18.6%	19.6%	
3	6	112.5	0.2%	0.4%	2	1	\$211	\$396	269	294	9.3	14.0%	15.0%	
115	99	-14.0	2.7%	2.3%	67	59	\$203	\$208	2,197	2,351	7.0	27.7%	29.0%	
316	361	14.3	0.9%	1.1%	357	335	\$276	\$244	11,496	12,491	8.7	14.8%	16.1%	
17	20	19.6	0.2%	0.2%	55	23	\$254	\$303	1,701	1,937	13.9	8.6%	9.7%	
487	510	4.8	1.2%	1.3%	609	467	\$267	\$261	13,834	14,605	5.6	16.7%	17.8%	
251	286	14.0	0.3%	0.4%	274	272	\$347	\$277	12,971	14,477	11.6	8.0%	8.8%	
39	47	22.4	1.6%	2.3%	32	19	\$224	\$292	1,086	1,022	-5.9	21.6%	21.5%	
29	38	33.7	0.7%	0.9%	28	12	\$177	\$214	1,382	1,466	6.1	15.5%	16.7%	
3,770	4,276	13.4	1.2%	1.4%	3,606	2,883	\$347	\$303	95,438	106,336	11.4	14.4%	15.9%	

¹ Population figures based on U.S. Census Bureau county estimates from July of the previous year.

² In some cases the Michigan number is slightly different from the county total.

³ Includes both regular and extended FIP.

Data sources: Unemployment: Bureau of Labor Statistics, Local Area Unemployment Statistics; Public Assistance: Michigan Department of Human Services.

 Prepared by: Michigan League for Human Services	Unemployment (data not seasonally adjusted)						Food Assistance Program				
	Unemployment Rate			Number Unemployed			Average Number of Households Per Month			Percent of Population Receiving Assistance ¹	
	Qtr 4 2009	Qtr 4 2010	+/- points	Qtr 4 2009	Qtr 4 2010	% change	Qtr 4 2009	Qtr 4 2010	% change	Qtr 4 2009	Qtr 4 2010
Manistee	13.9	12.3	-1.5	1,566	1,353	-13.6	2,007	2,208	10.0	16.5%	18.3%
Marquette	10.3	8.9	-1.4	3,731	3,166	-15.1	4,820	6,044	25.4	13.4%	15.8%
Mason	14.2	12.2	-2.0	2,035	1,720	-15.5	2,489	2,725	9.5	18.9%	20.1%
Mecosta	13.3	11.2	-2.1	2,635	2,173	-17.5	5,318	5,962	12.1	23.0%	24.9%
Menominee	11.8	8.5	-3.3	1,484	1,054	-29.0	1,692	1,861	10.0	14.6%	15.5%
Midland	10.3	8.4	-1.9	4,422	3,560	-19.5	5,045	5,900	16.9	12.7%	14.2%
Missaukee	15.9	13.6	-2.3	971	793	-18.3	1,067	1,202	12.7	17.0%	18.5%
Monroe	14.3	11.0	-3.3	10,462	7,761	-25.8	8,336	9,730	16.7	12.0%	13.6%
Montcalm	16.9	14.0	-2.9	4,428	3,576	-19.3	5,368	6,051	12.7	19.5%	21.4%
Montmorency	22.5	19.9	-2.6	887	741	-16.4	997	1,112	11.5	19.5%	21.6%
Muskegon	15.6	12.1	-3.5	13,484	10,093	-25.1	21,604	24,072	11.4	25.1%	26.9%
Newaygo	14.1	12.0	-2.0	3,136	2,656	-15.3	4,338	5,033	16.0	20.8%	23.1%
Oakland	13.6	10.8	-2.8	81,394	64,197	-21.1	50,242	67,902	35.1	8.6%	11.1%
Oceana	17.1	14.2	-2.8	2,334	1,913	-18.0	2,468	2,738	11.0	21.6%	23.1%
Ogemaw	14.2	12.3	-1.9	1,355	1,162	-14.2	2,531	2,740	8.2	24.4%	26.0%
Ontonagon	18.6	17.9	-0.6	585	533	-8.9	522	586	12.2	14.1%	16.2%
Osceola	15.7	13.5	-2.2	1,460	1,228	-15.9	2,113	2,323	9.9	21.1%	22.7%
Oscoda	22.6	20.8	-1.8	802	677	-15.6	999	1,086	8.8	22.3%	23.7%
Otsego	16.0	14.2	-1.8	1,887	1,611	-14.6	2,125	2,478	16.6	19.3%	21.7%
Ottawa	12.6	10.1	-2.6	16,508	12,648	-23.4	11,484	14,388	25.3	9.9%	11.3%
Presque Isle	19.1	16.8	-2.3	1,108	959	-13.5	879	994	13.0	12.6%	14.1%
Roscommon	16.1	14.4	-1.7	1,601	1,360	-15.1	2,849	3,108	9.1	22.8%	24.8%
Saginaw	12.8	10.7	-2.2	12,096	9,969	-17.6	21,449	24,653	14.9	22.0%	24.2%
Saint Clair	16.8	13.1	-3.7	13,594	10,412	-23.4	13,543	14,998	10.7	16.9%	18.4%
Saint Joseph	14.3	12.3	-2.0	4,008	3,294	-17.8	5,178	5,869	13.4	19.2%	21.4%
Sanilac	17.3	13.8	-3.5	3,482	2,622	-24.7	3,772	4,117	9.1	19.6%	21.4%
Schoolcraft	14.9	13.5	-1.5	572	512	-10.4	640	708	10.6	16.4%	17.6%
Shiawassee	15.1	11.9	-3.2	5,251	3,973	-24.3	5,411	6,190	14.4	16.9%	18.9%
Tuscola	16.1	13.0	-3.1	4,386	3,392	-22.7	3,962	4,538	14.5	16.8%	18.7%
Van Buren	13.6	11.7	-1.9	5,451	4,600	-15.6	6,794	7,737	13.9	19.5%	21.6%
Washtenaw	8.8	7.2	-1.6	16,321	13,185	-19.2	18,256	23,823	30.5	9.8%	11.9%
Wayne	16.2	13.1	-3.1	139,501	112,422	-19.4	226,376	266,882	17.9	24.2%	27.7%
Wexford	18.2	15.0	-3.2	2,527	1,983	-21.5	3,458	3,874	12.0	24.1%	26.0%

FACT

The deadline for filing state and federal income tax forms is April 18, but local tax forms may have a later filing deadline. See the Michigan League for Human Services' Money Back in Michigan packet (available at www.MILHS.org) for information on tax credits and deductions for working Michigan families.

¹ Population figures based on U.S. Census Bureau county estimates from July of the previous year.

² In some cases the Michigan number is slightly different from the county total.

Data sources: Unemployment: Bureau of Labor Statistics, Local Area Unemployment Statistics; Public Assistance: Michigan Department of Human Services.

Family Independence Program (Cash Assistance)			Child Day Care				Medicaid						
Average Number of Families Receiving Cash Assistance Per Month ³			Percent of Population Receiving Assistance ¹		Average Number of Children Receiving Care Per Month		Average Payment Per Child		Average Number of Persons Eligible for Medicaid ONLY (Excludes FIP & SSI Recipients)			Percent of Population Eligible for Medicaid (Includes FIP & SSI Recipients) ¹	
Qtr 4 2009	Qtr 4 2010	% change	Qtr 4 2009	Qtr 4 2010	Qtr 4 2009	Qtr 4 2010	Qtr 4 2009	Qtr 4 2010	Qtr 4 2009	Qtr 4 2010	% change	Qtr 4 2009	Qtr 4 2010
161	136	-15.5	1.7%	1.4%	70	57	\$219	\$206	3,395	3,784	11.5	18.0%	19.5%
196	239	21.9	0.7%	0.9%	266	229	\$208	\$211	7,897	8,331	5.5	14.5%	15.3%
146	175	19.4	1.3%	1.5%	298	276	\$231	\$246	4,947	5,175	4.6	21.1%	22.2%
175	174	-0.6	1.0%	1.1%	182	157	\$210	\$228	6,911	7,208	4.3	20.2%	20.9%
71	68	-4.7	0.8%	0.7%	94	85	\$193	\$250	3,529	3,713	5.2	17.1%	18.0%
300	259	-13.8	0.9%	0.8%	355	300	\$271	\$254	9,888	10,556	6.8	14.6%	15.4%
58	59	1.7	1.0%	1.1%	79	79	\$199	\$219	2,408	2,733	13.5	18.6%	21.3%
783	903	15.4	1.3%	1.5%	580	518	\$329	\$252	16,326	17,534	7.4	13.6%	14.6%
232	173	-25.4	0.9%	0.7%	246	167	\$249	\$257	10,915	11,748	7.6	21.0%	22.0%
42	53	25.2	1.0%	1.4%	35	33	\$202	\$200	1,832	1,818	-0.8	22.0%	22.6%
3,315	3,435	3.6	5.2%	5.4%	2,226	1,863	\$277	\$257	28,503	29,834	4.7	24.7%	25.9%
293	349	19.0	1.5%	1.8%	232	215	\$258	\$282	9,162	9,782	6.8	22.8%	24.6%
4,081	4,817	18.0	0.9%	1.1%	3,345	2,849	\$367	\$318	96,751	111,371	15.1	10.4%	11.8%
282	290	2.8	3.0%	3.1%	194	159	\$231	\$242	5,962	6,061	1.7	26.7%	27.5%
176	178	1.1	2.2%	2.1%	195	140	\$219	\$235	4,244	4,462	5.1	25.7%	26.8%
25	25	-1.3	1.1%	1.2%	16	4	\$175	\$232	960	984	2.5	17.7%	18.5%
114	113	-0.9	1.3%	1.3%	139	115	\$232	\$234	4,188	4,474	6.8	22.6%	24.3%
42	40	-4.8	1.1%	1.2%	26	23	\$196	\$189	1,689	1,698	0.5	23.1%	23.7%
122	118	-3.3	1.3%	1.3%	249	225	\$249	\$249	4,588	4,837	5.4	22.5%	23.9%
559	487	-12.9	0.5%	0.5%	888	764	\$276	\$279	26,873	28,772	7.1	11.7%	12.4%
40	36	-9.2	0.5%	0.6%	26	22	\$215	\$208	1,790	1,764	-1.4	15.9%	16.2%
166	184	10.9	1.6%	1.8%	166	101	\$193	\$193	4,473	4,621	3.3	22.5%	23.8%
2,642	2,585	-2.2	3.6%	3.5%	2,911	2,398	\$288	\$266	30,547	32,712	7.1	22.6%	23.8%
1,015	1,103	8.7	1.6%	1.8%	850	660	\$276	\$233	24,735	25,961	5.0	17.9%	19.0%
433	385	-10.9	1.8%	1.6%	366	352	\$277	\$292	12,139	13,033	7.4	23.2%	24.7%
206	237	14.7	1.3%	1.4%	240	185	\$235	\$239	7,829	8,322	6.3	21.5%	23.3%
49	37	-23.8	1.6%	1.2%	36	24	\$165	\$160	1,277	1,368	7.2	20.3%	21.0%
413	511	23.9	1.5%	1.9%	375	291	\$249	\$247	10,858	10,907	0.5	18.9%	19.6%
283	355	25.2	1.3%	1.6%	263	259	\$243	\$240	9,371	9,657	3.1	20.1%	21.2%
529	544	2.9	1.7%	1.7%	419	318	\$293	\$264	14,885	15,793	6.1	23.3%	24.5%
1,229	1,215	-1.1	0.9%	0.9%	1,486	1,216	\$379	\$309	27,933	31,177	11.6	10.4%	11.2%
31,066	33,319	7.3	4.5%	4.9%	22,080	14,908	\$328	\$314	318,461	340,116	6.8	24.8%	26.4%
210	232	10.1	1.6%	1.8%	271	203	\$241	\$262	6,601	6,768	2.5	25.6%	26.6%

FACT

Workers who are concerned about their job security need to know that after January 2012, there will be only 20 weeks of state-funded Unemployment Insurance (UI) benefits available for unemployed workers. This is due to action by the Michigan Legislature in March and can only be reversed if the Legislature passes a bill to do so.

¹ Population figures based on U.S. Census Bureau county estimates from July of the previous year.

² In some cases the Michigan number is slightly different from the county total.

³ Includes both regular and extended FIP.

Data sources: Unemployment: Bureau of Labor Statistics, Local Area Unemployment Statistics; Public Assistance: Michigan Department of Human Services.

Employment Trends by Selected Industries in Michigan
(data not seasonally adjusted, rounded to the nearest hundred)

Industry	Avg 2009 Qtr 4	Avg 2010 Qtr 4	% Change	Industry	Avg 2009 Qtr 4	Avg 2010 Qtr 4	% Change
TOTAL NONFARM	3,899,700	3,882,700	-0.4	Wholesale Electronic Markets and Agents and Brokers	22,900	24,000	4.8
TOTAL PRIVATE	3,237,500	3,239,300	0.1	•Retail Trade	456,100	455,500	-0.1
GOODS PRODUCING	592,000	598,600	1.1	Motor Vehicle and Parts Dealers	49,300	50,000	1.4
SERVICE-PROVIDING	3,307,700	3,284,100	-0.7	Building Material and Garden Equip. and Supplies Dealers	37,800	37,100	-1.9
Natural Resources and Mining	7,000	7,600	8.6	Food and Beverage Stores	77,000	76,100	-1.2
Construction	126,800	122,900	-3.1	Health and Personal Care	31,600	30,300	-4.1
Construction of Buildings	27,400	24,400	-10.9	Gasoline Stations	22,800	22,000	-3.5
Heavy and Civil Engineering	14,300	15,000	4.9	Clothing and Clothing Accessories	39,200	39,400	0.5
Specialty Trade Contractors	85,100	83,500	-1.9	Sporting Goods, Hobby, Book, and Music Stores	21,800	21,300	-2.3
Manufacturing	458,200	468,100	2.2	General Merchandise Stores	113,500	111,800	-1.5
•Durable Goods	337,900	347,200	2.8	Miscellaneous Store Retail	23,000	21,900	-4.8
Nonmetallic Mineral Products	11,100	10,700	-3.6	•Transportation & Warehousing & Utilities	111,700	108,900	-2.5
Primary Metal Manufacturing	15,600	16,400	5.1	Air Transportation	12,300	12,100	-1.6
Fabricated Metal Product	58,900	64,400	9.3	Rail Transportation	4,300	4,300	0.0
Metalworking Machinery Manuf.	26,500	27,100	2.3	Truck Transportation	34,000	33,900	-0.3
Computer and Electronic Products	17,500	17,400	-0.6	Warehousing and Storage	12,000	11,200	-6.7
Motor Vehicle Manufacturing	36,200	38,100	5.2	Information	53,400	50,500	-5.4
Motor Vehicle Parts Manufacturing	85,300	87,300	2.3	Publishing Industries	16,100	15,100	-6.2
Furniture and Related Products	18,600	17,700	-4.8	Telecommunications	21,100	18,700	-11.4
•Non-Durable Goods	120,300	120,900	0.5	Financial Activities	188,300	182,700	-3.0
Food Manufacturing	33,900	34,600	2.1	Finance and Insurance	139,800	137,400	-1.7
Printing and Related Support Activities	14,200	13,300	-6.3	Real Estate	33,800	32,400	-4.1
Chemical Manufacturing	25,100	24,300	-3.2	Professional & Business Services	522,400	526,500	0.8
Plastics and Rubber Products	26,600	26,700	0.4	Legal Services	27,500	27,100	-1.5
Trade Transportation & Utilities	718,800	718,300	-0.1	Accounting, Tax Preparation, Bookkeeping & Payroll Services	27,800	25,300	-9.0
•Wholesale Trade	150,900	153,900	2.0	Architectural Engineering	55,900	56,300	0.7
Merchant Wholesalers Durable Goods	81,300	84,800	4.3				
Merchant Wholesalers Nondurable Goods	46,700	45,100	-3.4				

Note: Industry details and subtotals may not sum to totals due to rounding.

Source: Department of Labor and Economic Growth/Office of Labor Market Information, Current Employment Statistics Section - (800) 225-3732

Employment Trends by Selected Industries in Michigan
(data not seasonally adjusted, rounded to the nearest hundred)

Industry	Avg 2009 Qtr 4	Avg 2010 Qtr 4	% Change	Industry	Avg 2009 Qtr 4	Avg 2010 Qtr 4	% Change
Computer Systems Design	6,700	36,100	-1.6	Government	662,200	643,400	-2.8
Management, Scientific and Technical Consulting Services	19,200	18,400	-4.2	• Federal Government	53,300	52,100	-2.3
Scientific Research and Development Services	18,100	17,400	-3.9	U.S. Postal Service	24,000	22,500	-6.3
Advertising and Related	12,800	12,400	-3.1	• State Government	187,000	185,600	-0.7
Management of Companies	51,100	51,600	1.0	State Government Educational Services	117,200	118,500	1.1
Administrative & Support Services	251,300	258,600	2.9	State Government Hospital Services	16,800	16,900	0.6
Employment Services	137,500	147,200	7.1	• Local Government	421,800	405,600	-3.8
Educational and Health Services	627,600	632,000	0.7	Local Government Educational Services	241,600	231,600	-4.1
• Educational Services	91,700	89,400	-2.5	Local Government Hospitals	13,300	13,300	0.0
(see also Government)				Local Government Elementary and Secondary Schools	213,600	201,100	-5.9
• Health Care & Social Assistance	535,900	542,600	1.3	Local Government Junior Colleges	27,400	30,200	10.2
Ambulatory Health Care Services	183,300	185,800	1.4				
Offices of Physicians	70,300	70,800	0.7				
Outpatient Care Centers	16,000	16,400	2.5				
Home Health Care Service	32,700	33,900	3.7				
Hospitals	190,700	191,900	0.6				
Nursing and Residential Care Facilities	98,300	98,500	0.2				
Social Assistance	63,500	66,400	4.6				
Individual and Family Services	27,600	28,200	2.2				
Leisure and Hospitality	370,100	364,600	-1.5				
Performing Arts Spectator Activities	8,300	8,100	-2.4				
Amusement, Gambling & Recreation	39,800	38,800	-2.5				
Accommodation	29,600	31,400	6.1				
Food Services and Drinking	289,800	285,500	-1.5				
Other Services	164,900	166,200	0.8				
Repair and Maintenance	34,000	34,300	0.9				
Personal and Laundry Services	36,100	35,400	-1.9				
Religious Grantmaking Civic Professional	94,800	96,500	1.8				

VISIT OUR WEBSITE FOR MORE INFORMATION!

The "Work and Wages" section of the Michigan League for Human Services website has information on Adult Learning, Low-Wage Jobs, and Unemployment. It also includes back issues of the Economic Security Bulletin. Go to www.MiLHS.org and click the "Policy" tab at the top, then "Work and Wages"

Note: Industry details and subtotals may not sum to totals due to rounding.

Source: Department of Labor and Economic Growth/Office of Labor Market Information, Current Employment Statistics Section - (800) 225-3732



Michigan League for Human Services

1223 Turner Street, Suite G-1
 Lansing, MI 48906
 (517) 487-5436 — Fax (517) 371-4546
 Web site: www.milhs.org

A United Way Agency

Percentage Change in Michigan Counties With Largest Changes
 Fourth Quarter 2009 — Fourth Quarter 2010

Percentage Point Change in Unemployment Rate		Percent Change in Food Assistance Households		Percent Change in FIP Cash Assistance Families	
Baraga	-4.2	Houghton	37.4	Mackinac	33.7
Lapeer	-4.0	Oakland	35.1	Arenac	27.9
St. Clair	-3.7	Livingston	30.5	Montmorency	25.2
Hillsdale	-3.7	Washtenaw	30.5	Tuscola	25.2
Kalkaska	-3.7	Isabella	30.3	Shiawassee	23.9
Sanilac	-3.5	Leelanau	30.1	Luce	22.4
Muskegon	-3.5	Ingham	27.4	Marquette	21.9
Iosco	-3.3	Macomb	26.2	Leelanau	19.6
Menominee	-3.3	Marquette	25.4	Mason	19.4
Monroe	-3.3	Kalamazoo	25.3	Grand Traverse	19.1

Note: Counties in bold have population of 100,000 or more.

Sources: Unemployment: Bureau of Labor Statistics, Local Area Unemployment Statistics; Public Assistance: Michigan Department of Human Services