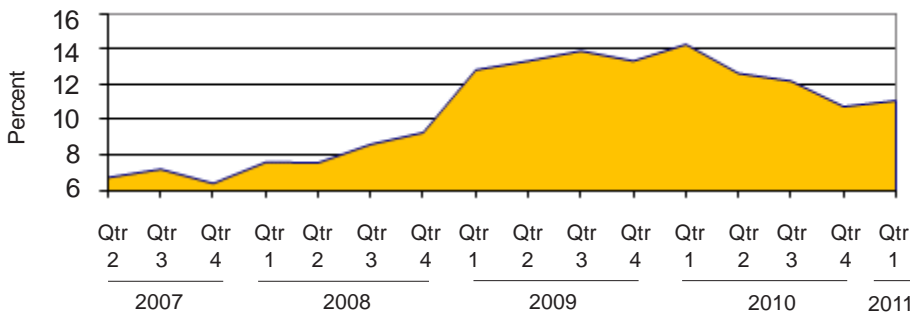


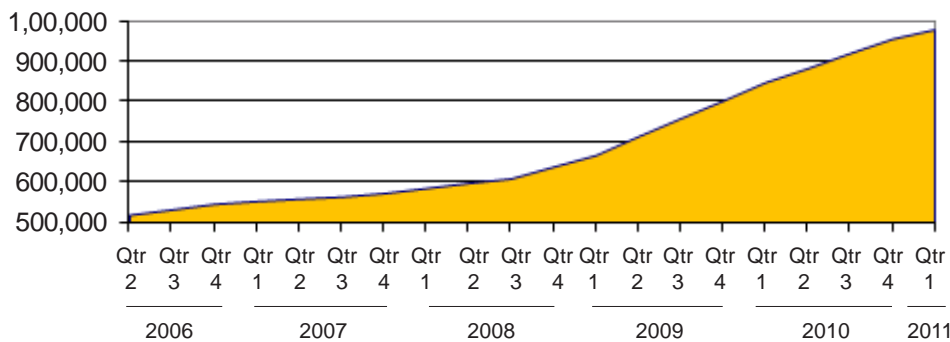


Michigan's Unemployment Rate Over the Past Four Years (not seasonally adjusted)



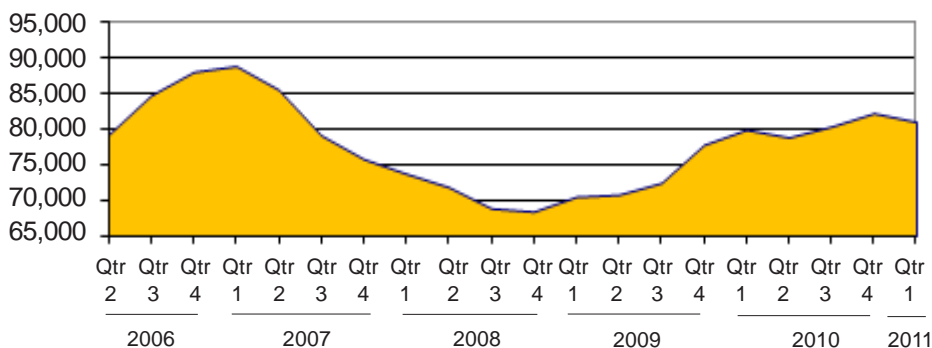
Source: Bureau of Labor Statistics

Food Assistance Households During the Past Five Years



Source: Michigan Department of Human Services

Family Independence Program Cases During the Past Five Years (Regular FIP only)



Source: Michigan Department of Human Services


One-Fifth of Population Receives Food Assistance or is Medicaid-Eligible

Unemployment

All counties except Ontonagon experienced a decrease in unemployment between First Quarter of 2010 and 2011. The number of nonfarm jobs increased by 65,700, with 27,300 jobs added in manufacturing (including 9,400 jobs in automobile and automobile parts manufacturing). Government jobs decreased by 17,800 over that time.

Public Assistance

Among larger counties, the largest increases in Food Assistance caseloads were in Oakland (26%), Washtenaw (24%) and Ingham (23%). Cash assistance increased statewide by less than 2,000 cases, although some smaller counties experienced significant decreases. During the first quarter of 2011, one out of five people in Michigan received Food Assistance and/or were eligible for Medicaid.

 Prepared by: Michigan League for Human Services	Unemployment (data not seasonally adjusted)						Food Assistance Program				
	Unemployment Rate			Number Unemployed			Average Number of Households Per Month			Percent of Population Receiving Assistance ¹	
	Qtr 1 2010	Qtr 1 2011	+/- points	Qtr 1 2010	Qtr 1 2011	% change	Qtr 1 2010	Qtr 1 2011	% change	Qtr 1 2010	Qtr 1 2011
Michigan²	14.3	11.1	-3.2	682,000	522,667	-23.4	850,056	982,152	15.5	17.6%	19.7%
Alcona	22.2	17.7	-4.5	880	661	-24.9	804	907	12.8	15.4%	16.5%
Alger	16.0	13.6	-2.4	644	539	-16.2	566	639	12.8	12.7%	13.1%
Allegan	14.3	10.7	-3.6	7,532	5,582	-25.9	6,586	7,336	11.4	13.8%	15.2%
Alpena	15.2	12.3	-2.9	2,204	1,718	-22.0	3,121	3,513	12.5	20.4%	22.3%
Antrim	18.7	15.2	-3.6	1,977	1,520	-23.1	1,562	1,744	11.7	15.4%	16.4%
Arenac	20.2	16.3	-3.9	1,469	1,165	-20.7	1,668	1,759	5.4	21.8%	22.6%
Baraga	27.0	21.7	-5.4	1,195	879	-26.5	605	740	22.3	14.4%	16.6%
Barry	11.7	8.7	-3.0	3,326	2,482	-25.4	3,698	3,968	7.3	14.4%	14.7%
Bay	13.5	10.9	-2.6	7,167	5,795	-19.1	9,824	10,682	8.7	18.2%	19.4%
Benzie	18.4	15.4	-3.0	1,575	1,285	-18.4	1,135	1,301	14.6	14.7%	15.8%
Berrien	14.2	11.3	-2.9	10,625	8,552	-19.5	14,273	16,210	13.6	18.5%	20.9%
Branch	13.8	11.1	-2.8	2,864	2,227	-22.3	3,692	3,955	7.1	18.5%	19.0%
Calhoun	12.1	9.6	-2.6	8,084	6,375	-21.1	16,163	17,433	7.9	23.7%	24.8%
Cass	12.8	10.4	-2.4	3,194	2,610	-18.3	4,237	4,746	12.0	19.3%	20.1%
Charlevoix	18.1	14.5	-3.5	2,363	1,863	-21.1	1,536	1,764	14.9	13.8%	15.0%
Cheboygan	21.2	17.8	-3.5	2,295	1,825	-20.5	2,278	2,546	11.8	19.1%	20.8%
Chippewa	15.5	13.4	-2.1	2,618	2,261	-13.6	2,822	3,175	12.5	14.9%	16.6%
Clare	18.1	14.9	-3.2	2,310	1,846	-20.1	3,878	4,282	10.4	26.9%	28.0%
Clinton	10.0	7.7	-2.3	3,673	2,844	-22.6	3,265	3,728	14.2	9.3%	9.8%
Crawford	15.1	13.2	-1.9	899	768	-14.6	1,318	1,465	11.2	19.6%	21.3%
Delta	14.4	11.9	-2.5	2,724	2,232	-18.1	3,125	3,516	12.5	17.0%	18.1%
Dickinson	12.8	10.2	-2.6	1,784	1,419	-20.5	1,697	1,947	14.7	12.8%	14.6%
Eaton	10.4	7.9	-2.6	5,889	4,504	-23.5	6,035	7,089	17.5	12.1%	13.6%
Emmet	18.8	16.4	-2.5	3,499	3,014	-13.9	2,170	2,515	15.9	13.7%	15.8%
Genesee	15.3	12.1	-3.2	29,439	22,709	-22.9	51,591	57,281	11.0	24.9%	26.7%
Gladwin	18.9	15.6	-3.3	1,908	1,541	-19.3	2,448	2,753	12.5	20.1%	22.2%
Gogebic	13.6	11.6	-2.0	1,016	854	-15.9	1,617	1,812	12.1	19.1%	20.0%
Gr. Traverse	14.1	11.8	-2.4	6,529	5,321	-18.5	5,926	6,993	18.0	13.6%	15.7%
Gratiot	14.6	11.3	-3.3	2,850	2,207	-22.6	3,156	3,552	12.6	17.0%	18.4%
Hillsdale	16.6	12.3	-4.3	3,356	2,426	-27.7	3,473	3,861	11.2	18.1%	18.9%
Houghton	12.2	10.2	-2.1	2,163	1,783	-17.6	2,639	3,379	28.0	14.3%	16.2%
Huron	15.9	12.3	-3.7	2,559	1,935	-24.4	2,305	2,422	5.1	14.7%	15.1%
Ingham	11.5	9.0	-2.4	17,041	13,554	-20.5	28,399	34,850	22.7	18.8%	21.5%
Ionia	14.7	11.4	-3.3	4,205	3,255	-22.6	4,527	5,040	11.3	16.1%	17.2%
Iosco	20.7	16.4	-4.3	2,095	1,572	-24.9	2,941	3,181	8.2	22.9%	24.0%
Iron	13.9	11.4	-2.5	782	626	-19.9	924	994	7.6	16.6%	17.0%
Isabella	9.7	8.1	-1.6	3,613	3,000	-17.0	9,293	11,165	20.1	20.9%	23.2%
Jackson	14.3	11.0	-3.2	10,526	7,976	-24.2	13,415	15,411	14.9	18.1%	20.0%
Kalamazoo	10.9	8.7	-2.2	13,988	11,173	-20.1	24,335	28,922	18.9	18.0%	20.3%
Kalkaska	16.6	13.6	-3.0	1,337	1,067	-20.2	1,642	1,822	11.0	22.6%	24.0%
Kent	11.4	8.8	-2.6	34,881	26,879	-22.9	47,634	56,604	18.8	16.3%	18.7%
Keweenaw	15.4	14.5	-0.9	173	164	-5.0	125	155	24.3	11.8%	14.7%
Lake	18.4	15.1	-3.3	735	594	-19.1	1,556	1,723	10.8	28.5%	28.6%
Lapeer	19.4	15.2	-4.2	8,423	6,403	-24.0	5,130	5,881	14.6	13.5%	15.2%
Leelanau	12.4	11.1	-1.3	1,308	1,160	-11.3	718	881	22.8	7.3%	8.5%
Lenawee	15.9	12.4	-3.5	7,495	5,673	-24.3	6,971	8,093	16.1	15.6%	17.4%
Livingston	13.1	10.1	-3.0	11,871	9,001	-24.2	5,846	7,104	21.5	7.1%	8.3%
Luce	15.3	12.9	-2.4	408	342	-16.1	525	554	5.5	16.6%	16.5%
Mackinac	28.6	24.9	-3.7	1,484	1,240	-16.4	662	799	20.6	13.0%	14.6%
Macomb	15.6	11.8	-3.8	63,409	46,485	-26.7	52,600	63,107	20.0	13.7%	15.7%

¹ Population figures based on U.S. Census Bureau county estimates from July of the previous year.

² In some cases the Michigan number is slightly different from the county total.

Data sources: Unemployment: Bureau of Labor Statistics, Local Area Unemployment Statistics; Public Assistance: Michigan Department of Human Services.


Family Independence Program (Cash Assistance)				Child Day Care				Medicaid						
Average Number of Families Receiving Cash Assistance Per Month ³			Percent of Population Receiving Assistance ¹		Average Number of Children Receiving Care Per Month		Average Payment Per Child		Average Number of Persons Eligible for Medicaid ONLY (Excludes FIP & SSI Recipients)			Percent of Population Eligible for Medicaid (Includes FIP & SSI Recipients) ¹		
Qtr 1 2010	Qtr 1 2011	% change	Qtr 1 2010	Qtr 1 2011	Qtr 1 2010	Qtr 1 2011	Qtr 1 2010	Qtr 1 2011	Qtr 1 2010	Qtr 1 2011	% change	Qtr 1 2010	Qtr 1 2011	
83,085	84,778	2.0	2.3%	2.3%	62,961	53,227	\$280	\$290	1,384,252	1,465,410	5.9	18.5%	19.6%	
32	29	-9.4	0.8%	0.6%	21	33	\$155	\$192	1,485	1,487	0.1	16.3%	16.6%	
27	23	-15.9	0.6%	0.5%	16	26	\$151	\$173	1,296	1,295	-0.1	16.6%	16.0%	
433	408	-5.8	1.0%	0.9%	446	376	\$245	\$296	16,216	16,910	4.3	16.7%	17.5%	
225	210	-6.8	2.0%	1.8%	196	190	\$205	\$199	4,707	4,913	4.4	21.6%	22.1%	
47	54	15.6	0.4%	0.6%	84	75	\$225	\$255	3,864	3,959	2.5	18.5%	19.2%	
85	98	16.1	1.3%	1.5%	95	62	\$198	\$238	2,896	2,926	1.0	22.8%	23.4%	
50	53	6.0	1.4%	1.5%	35	28	\$220	\$245	1,258	1,327	5.5	18.2%	18.7%	
211	191	-9.8	1.0%	0.8%	218	193	\$218	\$277	7,639	8,011	4.9	15.3%	15.7%	
708	649	-8.4	1.7%	1.5%	979	819	\$233	\$234	15,657	16,318	4.2	18.9%	19.4%	
47	41	-14.1	0.7%	0.6%	46	29	\$272	\$268	2,574	2,718	5.6	17.4%	17.8%	
1,539	1,491	-3.1	2.6%	2.6%	1,283	1,126	\$264	\$264	24,373	25,536	4.8	20.7%	22.0%	
393	330	-16.1	2.4%	2.0%	268	213	\$257	\$264	7,605	8,115	6.7	21.3%	21.8%	
1,747	1,541	-11.8	3.4%	3.0%	1,153	1,049	\$259	\$276	23,051	24,401	5.9	23.6%	24.2%	
337	343	1.8	1.8%	1.8%	310	264	\$261	\$308	8,442	8,819	4.5	20.7%	20.4%	
52	42	-18.6	0.4%	0.4%	76	70	\$227	\$211	3,679	3,964	7.7	16.1%	17.2%	
105	122	15.8	0.9%	1.1%	93	79	\$245	\$259	4,836	4,889	1.1	21.9%	22.3%	
183	186	1.8	1.2%	1.2%	186	133	\$221	\$260	5,055	5,390	6.6	16.6%	17.5%	
298	274	-7.8	2.6%	2.4%	132	126	\$255	\$254	5,913	6,310	6.7	26.4%	26.9%	
113	93	-18.2	0.4%	0.3%	201	180	\$277	\$272	6,176	6,572	6.4	10.1%	9.9%	
57	78	37.4	1.0%	1.4%	63	55	\$234	\$222	2,561	2,629	2.7	21.3%	22.5%	
167	155	-7.4	1.2%	1.1%	167	169	\$193	\$227	5,837	6,047	3.6	19.6%	20.1%	
52	62	19.4	0.4%	0.5%	125	137	\$186	\$162	4,052	4,126	1.8	17.6%	18.3%	
274	283	3.4	0.6%	0.6%	501	478	\$265	\$286	11,697	12,815	9.6	12.9%	13.8%	
53	45	-14.5	0.3%	0.3%	124	112	\$240	\$250	5,012	5,264	5.0	16.7%	18.1%	
7,193	7,999	11.2	4.7%	5.3%	6,089	4,933	\$280	\$297	68,494	69,811	1.9	24.1%	25.1%	
164	175	6.9	1.6%	1.7%	103	108	\$210	\$202	4,394	4,609	4.9	21.6%	22.9%	
186	199	7.2	3.3%	3.3%	54	43	\$190	\$223	2,386	2,496	4.6	20.9%	21.0%	
166	188	13.5	0.4%	0.5%	365	329	\$243	\$245	12,120	12,860	6.1	16.1%	17.0%	
185	155	-16.5	1.2%	0.9%	212	161	\$229	\$248	6,823	7,286	6.8	19.6%	20.3%	
301	346	15.1	1.9%	2.1%	186	180	\$234	\$245	7,316	7,674	4.9	20.3%	20.9%	
86	84	-3.1	0.6%	0.5%	91	81	\$163	\$206	5,177	5,383	4.0	17.2%	17.0%	
127	104	-17.8	1.0%	0.8%	140	141	\$188	\$205	5,173	5,309	2.6	19.3%	19.0%	
1,797	1,663	-7.5	1.8%	1.7%	1,692	1,501	\$295	\$306	36,517	39,308	7.6	17.3%	18.1%	
328	260	-20.7	1.3%	1.0%	273	249	\$251	\$251	9,089	9,731	7.1	17.6%	18.0%	
175	180	2.9	1.6%	1.7%	98	118	\$196	\$244	4,747	4,804	1.2	22.9%	23.1%	
76	67	-12.3	1.8%	1.5%	34	27	\$157	\$190	2,010	2,085	3.7	21.8%	21.9%	
207	186	-10.0	0.7%	0.6%	302	268	\$244	\$248	8,557	9,130	6.7	15.3%	15.5%	
1,291	1,431	10.9	2.2%	2.4%	931	824	\$269	\$264	22,679	24,590	8.4	18.7%	20.2%	
2,256	2,403	6.5	2.5%	2.6%	1,789	1,657	\$283	\$297	30,984	32,537	5.0	17.1%	17.9%	
67	59	-12.0	1.0%	0.9%	82	93	\$198	\$237	3,624	3,715	2.5	24.8%	24.9%	
5,109	4,815	-5.7	2.2%	2.1%	4,468	3,939	\$291	\$293	87,264	93,242	6.9	18.8%	19.9%	
3	8	177.8	0.2%	0.8%	1	1	\$382	\$360	280	281	0.1	14.2%	15.8%	
119	91	-23.5	2.6%	2.0%	52	43	\$207	\$200	2,196	2,385	8.6	27.8%	27.6%	
352	354	0.8	1.1%	1.1%	343	346	\$240	\$244	11,915	12,562	5.4	15.5%	16.5%	
21	20	-4.8	0.3%	0.2%	46	24	\$215	\$345	1,758	1,869	6.3	8.8%	9.5%	
489	515	5.2	1.2%	1.3%	528	481	\$248	\$266	14,005	14,788	5.6	17.1%	18.0%	
272	265	-2.8	0.4%	0.3%	253	247	\$301	\$302	13,802	14,675	6.3	8.4%	9.0%	
44	45	0.8	2.0%	2.0%	33	18	\$228	\$311	1,071	1,023	-4.5	21.9%	20.9%	
35	45	30.8	0.9%	1.1%	18	11	\$118	\$200	1,409	1,470	4.4	16.0%	16.1%	
4,037	4,233	4.9	1.3%	1.4%	3,298	2,984	\$295	\$298	99,782	107,820	8.1	15.0%	16.0%	

¹ Population figures based on U.S. Census Bureau county estimates from July of the previous year.

² In some cases the Michigan number is slightly different from the county total.

³ Includes both regular and extended FIP.

Data sources: Unemployment: Bureau of Labor Statistics, Local Area Unemployment Statistics; Public Assistance: Michigan Department of Human Services.

 Prepared by: Michigan League for Human Services	Unemployment (data not seasonally adjusted)						Food Assistance Program				
	Unemployment Rate			Number Unemployed			Average Number of Households Per Month			Percent of Population Receiving Assistance ¹	
	Qtr 1 2010	Qtr 1 2011	+/- points	Qtr 1 2010	Qtr 1 2011	% change	Qtr 1 2010	Qtr 1 2011	% change	Qtr 1 2010	Qtr 1 2011
Manistee	15.2	13.3	-1.9	1,667	1,438	-13.7	2,085	2,235	7.2	17.4%	18.2%
Marquette	11.3	9.5	-1.7	4,018	3,398	-15.4	5,181	6,253	20.7	14.1%	16.0%
Mason	15.5	13.0	-2.5	2,197	1,830	-16.7	2,567	2,833	10.3	19.3%	20.6%
Mecosta	14.0	11.6	-2.4	2,868	2,362	-17.6	5,519	6,173	11.9	23.7%	25.0%
Menominee	12.3	9.4	-2.9	1,555	1,148	-26.2	1,767	1,872	6.0	15.3%	15.5%
Midland	10.7	8.6	-2.1	4,439	3,577	-19.4	5,309	6,099	14.9	13.3%	14.4%
Missaukee	18.4	14.9	-3.5	1,153	903	-21.7	1,144	1,258	9.9	17.9%	19.3%
Monroe	14.6	11.1	-3.5	10,460	7,827	-25.2	8,792	10,004	13.8	12.6%	14.0%
Montcalm	17.7	13.7	-4.0	4,694	3,563	-24.1	5,543	6,181	11.5	20.0%	21.7%
Montmorency	24.0	20.5	-3.5	936	767	-18.1	1,035	1,130	9.2	20.4%	22.5%
Muskegon	15.5	11.5	-4.1	13,043	9,412	-27.8	22,314	24,516	9.9	25.7%	27.5%
Newaygo	14.9	12.6	-2.4	3,248	2,756	-15.1	4,511	5,191	15.1	21.6%	24.0%
Oakland	13.6	10.2	-3.4	81,068	59,477	-26.6	55,892	70,343	25.9	9.4%	11.5%
Oceana	19.7	16.4	-3.2	2,665	2,187	-17.9	2,563	2,777	8.4	22.3%	24.1%
Ogemaw	15.8	13.3	-2.5	1,491	1,238	-17.0	2,589	2,837	9.6	25.0%	26.3%
Ontonagon	16.9	18.0	1.1	532	544	2.2	550	598	8.6	15.7%	15.9%
Osceola	16.9	13.6	-3.3	1,578	1,248	-21.0	2,165	2,386	10.2	21.8%	22.4%
Oscoda	23.6	19.5	-4.2	870	697	-19.9	1,013	1,102	8.9	22.6%	23.9%
Otsego	16.9	14.2	-2.7	1,905	1,559	-18.1	2,211	2,581	16.7	20.2%	21.9%
Ottawa	12.9	9.5	-3.4	16,519	12,070	-26.9	12,614	14,699	16.5	10.4%	11.3%
Presque Isle	24.2	21.1	-3.1	1,415	1,198	-15.3	923	1,064	15.3	13.7%	15.4%
Roscommon	18.0	14.9	-3.1	1,738	1,418	-18.4	2,945	3,133	6.4	23.9%	25.1%
Saginaw	13.3	10.7	-2.7	12,238	9,775	-20.1	22,235	25,234	13.5	22.6%	24.5%
Saint Clair	18.3	14.4	-3.9	14,826	11,285	-23.9	13,945	15,388	10.3	17.5%	19.3%
Saint Joseph	13.9	11.1	-2.8	3,874	3,130	-19.2	5,354	6,090	13.7	19.8%	22.1%
Sanilac	18.3	14.0	-4.3	3,757	2,766	-26.4	3,891	4,156	6.8	20.5%	21.0%
Schoolcraft	17.4	15.8	-1.6	666	607	-8.9	664	746	12.5	16.9%	17.8%
Shiawassee	15.4	12.0	-3.4	5,254	4,007	-23.7	5,743	6,331	10.2	17.9%	19.2%
Tuscola	16.7	13.1	-3.7	4,585	3,469	-24.3	4,131	4,689	13.5	17.6%	19.1%
Van Buren	15.4	12.7	-2.6	6,052	5,001	-17.4	7,013	7,795	11.2	19.9%	22.2%
Washtenaw	8.7	6.8	-1.9	15,761	12,454	-21.0	19,777	24,515	24.0	10.4%	12.3%
Wayne	16.1	12.7	-3.4	137,756	104,769	-23.9	237,550	272,339	14.6	25.4%	29.6%
Wexford	18.2	14.8	-3.4	2,552	2,000	-21.6	3,549	3,936	10.9	24.5%	25.3%

FACT

Despite the fact that Michigan's unemployment has been among the highest in the nation since 2001 (including several years at the top), Michigan's Legislature recently voted to reduce the length of time unemployed workers can receive Basic Unemployment Insurance from 26 to 20 weeks. Michigan was the first state in the nation to reduce the length of time to below 26 weeks.

¹ Population figures based on U.S. Census Bureau county estimates from July of the previous year.

² In some cases the Michigan number is slightly different from the county total.

Data sources: Unemployment: Bureau of Labor Statistics, Local Area Unemployment Statistics; Public Assistance: Michigan Department of Human Services.

Family Independence Program (Cash Assistance)				Child Day Care				Medicaid						
Average Number of Families Receiving Cash Assistance Per Month ³			Percent of Population Receiving Assistance ¹		Average Number of Children Receiving Care Per Month		Average Payment Per Child		Average Number of Persons Eligible for Medicaid ONLY (Excludes FIP & SSI Recipients)			Percent of Population Eligible for Medicaid (Includes FIP & SSI Recipients) ¹		
Qtr 1 2010	Qtr 1 2011	% change	Qtr 1 2010	Qtr 1 2011	Qtr 1 2010	Qtr 1 2011	Qtr 1 2010	Qtr 1 2011	Qtr 1 2010	Qtr 1 2011	% change	Qtr 1 2010	Qtr 1 2011	
176	113	-35.9	1.9%	1.2%	71	53	\$223	\$218	3,407	3,825	12.3	18.4%	19.2%	
200	232	15.6	0.7%	0.8%	246	247	\$196	\$216	8,060	8,471	5.1	14.7%	15.2%	
153	160	4.6	1.3%	1.4%	285	240	\$236	\$257	4,948	5,274	6.6	21.1%	22.4%	
175	161	-8.0	1.0%	0.9%	163	150	\$238	\$245	6,961	7,388	6.1	20.3%	20.7%	
75	72	-3.1	0.8%	0.8%	101	83	\$187	\$230	3,631	3,758	3.5	17.7%	18.1%	
310	240	-22.6	0.9%	0.7%	336	299	\$252	\$271	10,110	10,682	5.7	15.0%	15.3%	
65	68	5.7	1.1%	1.2%	63	70	\$250	\$250	2,525	2,835	12.2	19.7%	22.1%	
811	888	9.5	1.3%	1.5%	543	513	\$261	\$275	16,736	18,006	7.6	13.8%	14.9%	
217	158	-27.2	0.9%	0.6%	233	186	\$239	\$262	11,173	11,778	5.4	21.3%	21.8%	
44	50	13.6	1.1%	1.3%	30	24	\$212	\$233	1,806	1,827	1.1	22.1%	23.3%	
3,383	3,409	0.7	5.3%	5.5%	2,149	1,850	\$252	\$261	29,002	30,059	3.6	25.2%	26.3%	
327	366	11.8	1.7%	1.9%	213	202	\$278	\$289	9,221	9,935	7.7	23.3%	25.1%	
4,385	4,829	10.1	1.0%	1.1%	3,182	2,902	\$319	\$328	102,888	114,968	11.7	11.0%	12.2%	
311	300	-3.6	3.4%	3.3%	161	124	\$247	\$271	5,653	5,858	3.6	26.2%	27.9%	
182	187	2.9	2.2%	2.2%	161	138	\$236	\$243	4,334	4,463	3.0	26.1%	26.4%	
29	27	-4.7	1.5%	1.2%	20	4	\$177	\$224	983	961	-2.3	18.7%	17.5%	
115	107	-7.0	1.3%	1.2%	120	84	\$230	\$276	4,291	4,569	6.5	23.3%	23.8%	
42	44	3.1	1.2%	1.2%	33	27	\$173	\$202	1,690	1,695	0.3	23.6%	23.9%	
128	121	-5.0	1.4%	1.2%	237	236	\$246	\$246	4,619	4,930	6.7	22.9%	23.6%	
553	477	-13.8	0.5%	0.4%	810	756	\$269	\$294	27,395	28,798	5.1	11.9%	12.3%	
44	33	-24.4	0.6%	0.5%	27	16	\$185	\$230	1,824	1,838	0.7	16.5%	16.8%	
183	175	-4.6	1.8%	1.8%	129	97	\$193	\$201	4,512	4,620	2.4	23.1%	23.9%	
2,665	2,556	-4.1	3.6%	3.5%	2,710	2,348	\$252	\$276	31,208	32,839	5.2	23.1%	23.9%	
1,055	1,094	3.7	1.7%	1.8%	776	684	\$256	\$234	25,318	26,159	3.3	18.5%	19.7%	
429	376	-12.4	1.8%	1.6%	369	345	\$293	\$286	12,397	13,370	7.8	23.9%	25.4%	
217	256	18.0	1.3%	1.5%	226	193	\$222	\$248	7,985	8,265	3.5	22.4%	22.7%	
42	44	4.0	1.4%	1.3%	33	22	\$172	\$146	1,298	1,391	7.1	20.4%	20.6%	
437	508	16.3	1.6%	1.9%	362	284	\$235	\$238	11,299	11,044	-2.3	19.8%	19.7%	
290	375	29.4	1.3%	1.7%	264	261	\$244	\$240	9,606	9,923	3.3	20.7%	21.6%	
542	547	1.0	1.7%	1.7%	350	327	\$239	\$276	14,641	15,390	5.1	23.0%	24.6%	
1,275	1,150	-9.8	1.0%	0.9%	1,418	1,224	\$301	\$318	28,800	31,693	10.0	10.6%	11.4%	
31,610	32,730	3.5	4.6%	5.1%	18,583	14,201	\$303	\$316	328,505	344,721	4.9	25.6%	28.1%	
214	219	2.2	1.6%	1.7%	249	185	\$246	\$246	6,606	6,941	5.1	25.8%	26.0%	

FACT

Michigan's Earned Income Tax Credit (EITC) has been reduced from 20 percent of the federal credit to 6 percent. In other words, low-income working families just got a tax increase.

¹ Population figures based on U.S. Census Bureau county estimates from July of the previous year.

² In some cases the Michigan number is slightly different from the county total.

³ Includes both regular and extended FIP.

Data sources: Unemployment: Bureau of Labor Statistics, Local Area Unemployment Statistics; Public Assistance: Michigan Department of Human Services.

Employment Trends by Selected Industries in Michigan
(data not seasonally adjusted, rounded to the nearest hundred)

Industry	Avg 2010 Qtr 1	Avg 2011 Qtr 1	% Change	Industry	Avg 2010 Qtr 1	Avg 2011 Qtr 1	% Change
TOTAL NONFARM	3,771,700	3,837,400	1.7	Wholesale Electronic Markets and Agents and Brokers	23,700	25,300	6.8
TOTAL PRIVATE	3,120,700	3,204,200	2.7	•Retail Trade	433,700	437,400	0.9
GOODS PRODUCING	568,100	600,100	5.6	Motor Vehicle and Parts Dealers	49,700	51,100	2.8
SERVICE-PROVIDING	3,203,600	3,237,300	1.1	Building Material and Garden Equip. and Supplies Dealers	36,300	37,600	3.6
Natural Resources and Mining	6,400	6,800	6.3	Food and Beverage Stores	73,600	73,300	-0.4
Construction	102,100	106,400	4.2	Health and Personal Care	30,800	29,900	-2.9
Construction of Buildings	23,000	22,800	-0.9	Gasoline Stations	22,800	23,100	1.3
Heavy and Civil Engineering	9,900	11,200	13.1	Clothing and Clothing Accessories	35,300	35,700	1.1
Specialty Trade Contractors	69,200	72,500	4.8	Sporting Goods, Hobby, Book, and Music Stores	19,700	19,300	-2.0
Manufacturing	459,600	486,900	5.9	General Merchandise Stores	108,100	107,300	-0.7
•Durable Goods	338,600	365,000	7.8	Miscellaneous Store Retail	21,000	21,800	3.8
Nonmetallic Mineral Products	10,000	10,100	1.0	•Transportation & Warehousing & Utilities	110,300	112,200	1.7
Primary Metal Manufacturing	17,300	18,700	8.1	Air Transportation	12,900	13,000	0.8
Fabricated Metal Product	60,800	70,400	15.8	Rail Transportation	4,200	4,200	0.0
Metalworking Machinery Manuf.	27,400	30,400	10.9	Truck Transportation	32,900	34,600	5.2
Computer and Electronic Products	16,800	17,800	6.0	Warehousing and Storage	11,800	11,600	-1.7
Motor Vehicle Manufacturing	34,700	35,900	3.5	Information	54,100	54,200	0.2
Motor Vehicle Parts Manufacturing	82,700	90,900	9.9	Publishing Industries	16,400	15,700	-4.3
Furniture and Related Products	18,400	18,900	2.7	Telecommunications	21,000	20,200	-3.8
•Non-Durable Goods	120,900	121,900	0.8	Financial Activities	185,700	186,100	0.2
Food Manufacturing	32,600	32,500	-0.3	Finance and Insurance	139,300	138,600	-0.5
Printing and Related Support Activities	13,900	13,500	-2.9	Real Estate	33,400	35,200	5.4
Chemical Manufacturing	24,800	25,100	1.2	Professional & Business Services	494,200	520,400	5.3
Plastics and Rubber Products	28,700	30,700	7.0	Legal Services	27,000	27,100	0.4
Trade Transportation & Utilities	691,400	701,300	1.4	Accounting, Tax Preparation, Bookkeeping & Payroll Services	30,900	28,600	-7.4
•Wholesale Trade	147,500	151,700	2.8	Architectural Engineering	55,300	57,400	3.8
Merchant Wholesalers Durable Goods	79,400	82,900	4.4				
Merchant Wholesalers Nondurable Goods	44,400	43,500	-2.0				

Note: Industry details and subtotals may not sum to totals due to rounding.

Source: Department of Labor and Economic Growth/Office of Labor Market Information, Current Employment Statistics Section - (800) 225-3732

Employment Trends by Selected Industries in Michigan
(data not seasonally adjusted, rounded to the nearest hundred)

Industry	Avg 2010 Qtr 1	Avg 2011 Qtr 1	% Change	Industry	Avg 2010 Qtr 1	Avg 2011 Qtr 1	% Change
Computer Systems Design	37,000	38,300	3.5	Government	651,000	633,200	-2.7
Management, Scientific and Technical Consulting Services	20,100	21,900	9.0	•Federal Government	55,300	52,600	-4.9
Scientific Research and Development Services	18,600	18,600	0.0	U.S. Postal Service	23,500	22,200	-5.5
Advertising and Related	12,400	12,300	-0.8	•State Government	184,700	182,900	-1.0
Management of Companies	49,800	51,700	3.8	State Government Educational Services	115,000	117,500	2.2
Administrative & Support Services	222,800	240,400	7.9	State Government Hospital Services	16,800	16,900	0.6
Employment Services	120,500	134,900	12.0	•Local Government	411,000	397,700	-3.2
Educational and Health Services	612,400	627,700	2.5	Local Government Educational Services	236,600	225,500	-4.7
•Educational Services	83,100	86,700	4.3	Local Government Hospitals	13,000	13,100	0.8
(see also Government)				Local Government Elementary and Secondary Schools	210,300	199,900	-4.9
•Health Care & Social Assistance	529,300	541,000	2.2	Local Government Junior Colleges	25,500	25,100	-1.6
Ambulatory Health Care Services	182,900	185,100	1.2				
Offices of Physicians	69,700	70,000	0.4				
Outpatient Care Centers	16,600	17,100	3.0				
Home Health Care Service	33,600	34,600	3.0				
Hospitals	189,600	193,100	1.8				
Nursing and Residential Care Facilities	97,000	99,700	2.8				
Social Assistance	59,800	63,100	5.5				
Individual and Family Services	27,800	28,100	1.1				
Leisure and Hospitality	350,200	347,600	-0.7				
Performing Arts Spectator Activities	8,000	7,400	-7.5				
Amusement, Gambling & Recreation	27,800	27,600	-0.7				
Casino Hotels	7,700	7,700	0.0				
Food Services and Drinking	275,100	274,200	-0.3				
Other Services	164,500	166,800	1.4				
Repair and Maintenance	33,800	35,200	4.1				
Personal and Laundry Services	36,200	35,700	-1.4				
Religious Grantmaking Civic Professional	94,500	95,900	1.5				

VISIT OUR WEBSITE FOR MORE INFORMATION!

The "Work and Wages" section of the Michigan League for Human Services website has information on Adult Learning, Low-Wage Jobs, and Unemployment. It also includes back issues of the Economic Security Bulletin. Go to www.MiLHS.org and click the "Policy" tab at the top, then "Work and Wages"

Note: Industry details and subtotals may not sum to totals due to rounding.

Source: Department of Labor and Economic Growth/Office of Labor Market Information, Current Employment Statistics Section - (800) 225-3732



Michigan League for Human Services

1223 Turner Street, Suite G-1
 Lansing, MI 48906
 (517) 487-5436 — Fax (517) 371-4546
 Web site: www.milhs.org

A United Way Agency

**Percentage Change in Michigan Counties With Largest Changes
 First Quarter 2010 — First Quarter 2011**

Percentage Point Change in Unemployment Rate		Percent Change in Food Assistance Households		Percent Change in FIP Cash Assistance Families	
Baraga	-4.2	Houghton	28.0	Crawford	37.4
Lapeer	-4.0	Oakland	25.9	Mackinac	30.8
St. Clair	-3.7	Keweenaw	24.3	Tuscola	29.4
Hillsdale	-3.7	Washtenaw	24.0	Dickinson	19.4
Kalkaska	-3.7	Leelanau	22.8	Sanilac	18.0
Sanilac	-3.5	Ingham	22.7	Shiawassee	16.3
Muskegon	-3.5	Baraga	22.3	Arenac	16.1
Iosco	-3.3	Livingston	21.5	Cheboygan	15.8
Menominee	-3.3	Marquette	20.7	Marquette	15.6
Monroe	-3.3	Mackinac	20.6	Antrim	15.6

Note: Counties in bold have population of 100,000 or more.

Sources: Unemployment: Bureau of Labor Statistics, Local Area Unemployment Statistics; Public Assistance: Michigan Department of Human Services