



Educating the Whole Child:

A Two-Generation Approach

Gilda Z. Jacobs

President/CEO

www.mlpp.org

February 6, 2018





The League's Mission

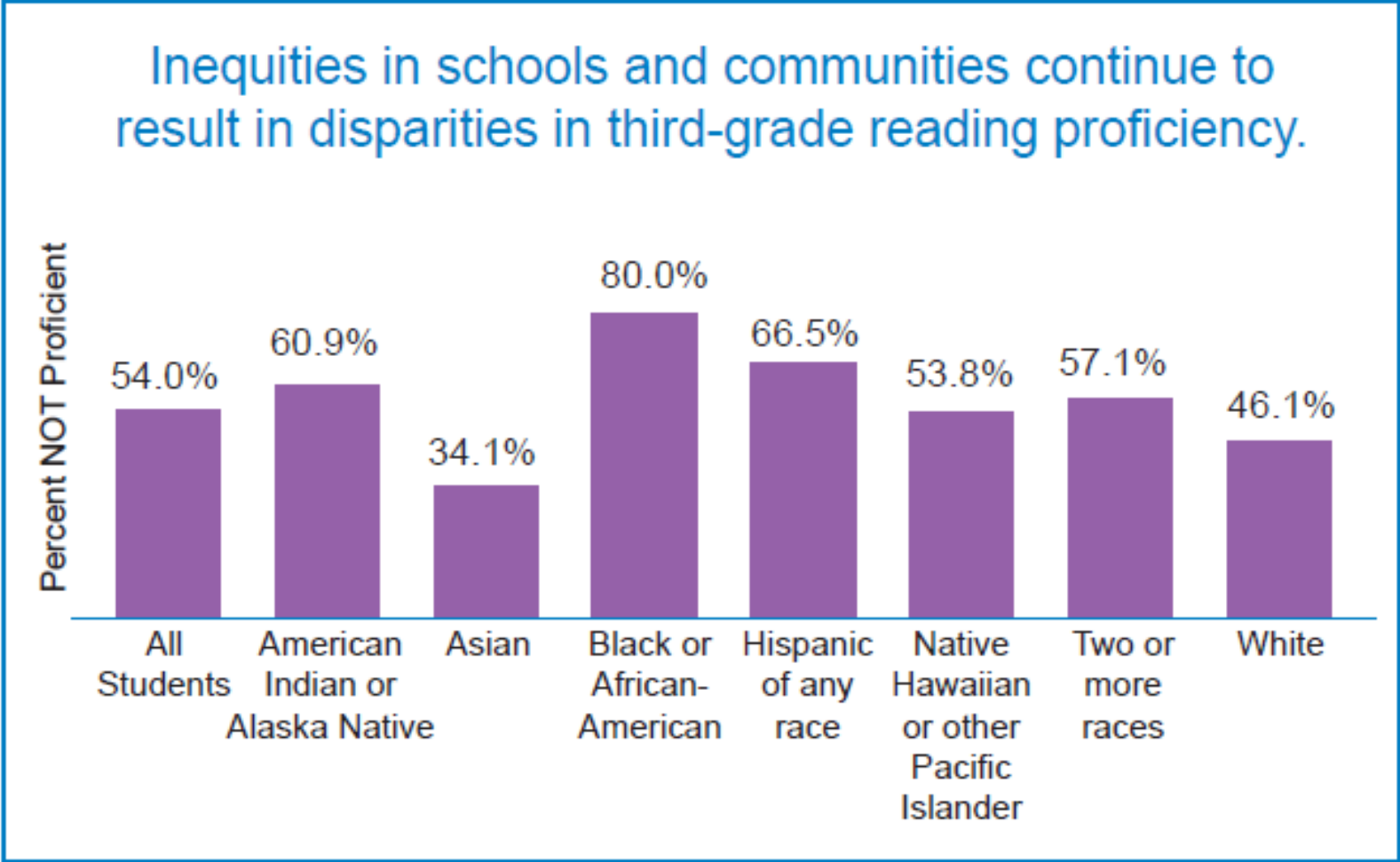
Promoting racial equity, economic security,
health and wellbeing for all people in
Michigan through policy change.

1223 Turner St. Suite G-1, Lansing, MI 48906-4369 • (517) 487-5436
Fax: (517) 371-4546 • Web site: www.mlpp.org

A United Way Agency

Deep educational disparities persist based on race, ethnicity and income—beginning early...

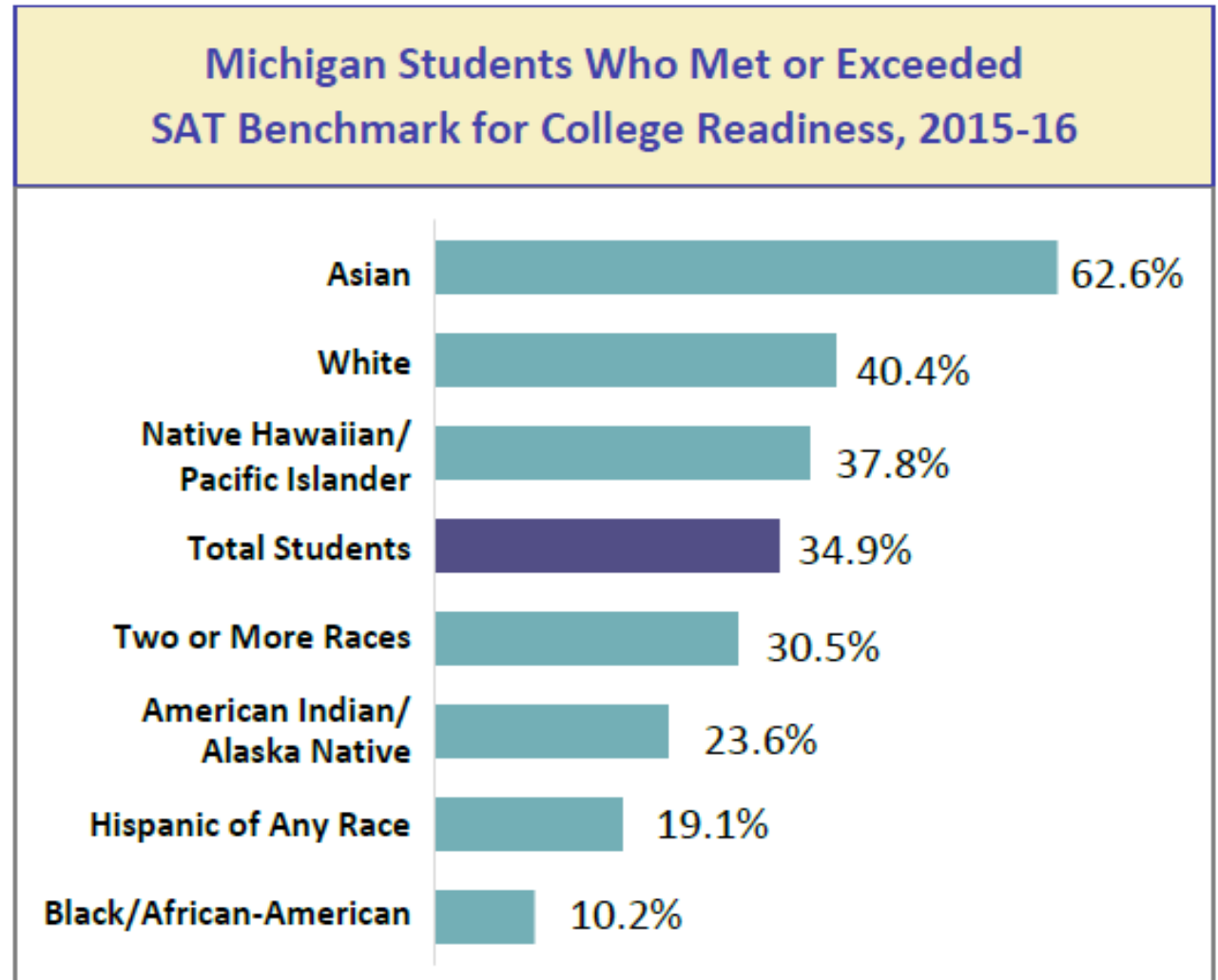
Without sufficient resources for early learning and family literacy, Michigan's retention law could have an disproportionate impact on children of color



Source: Michigan Department of Education

...and continuing into the college years

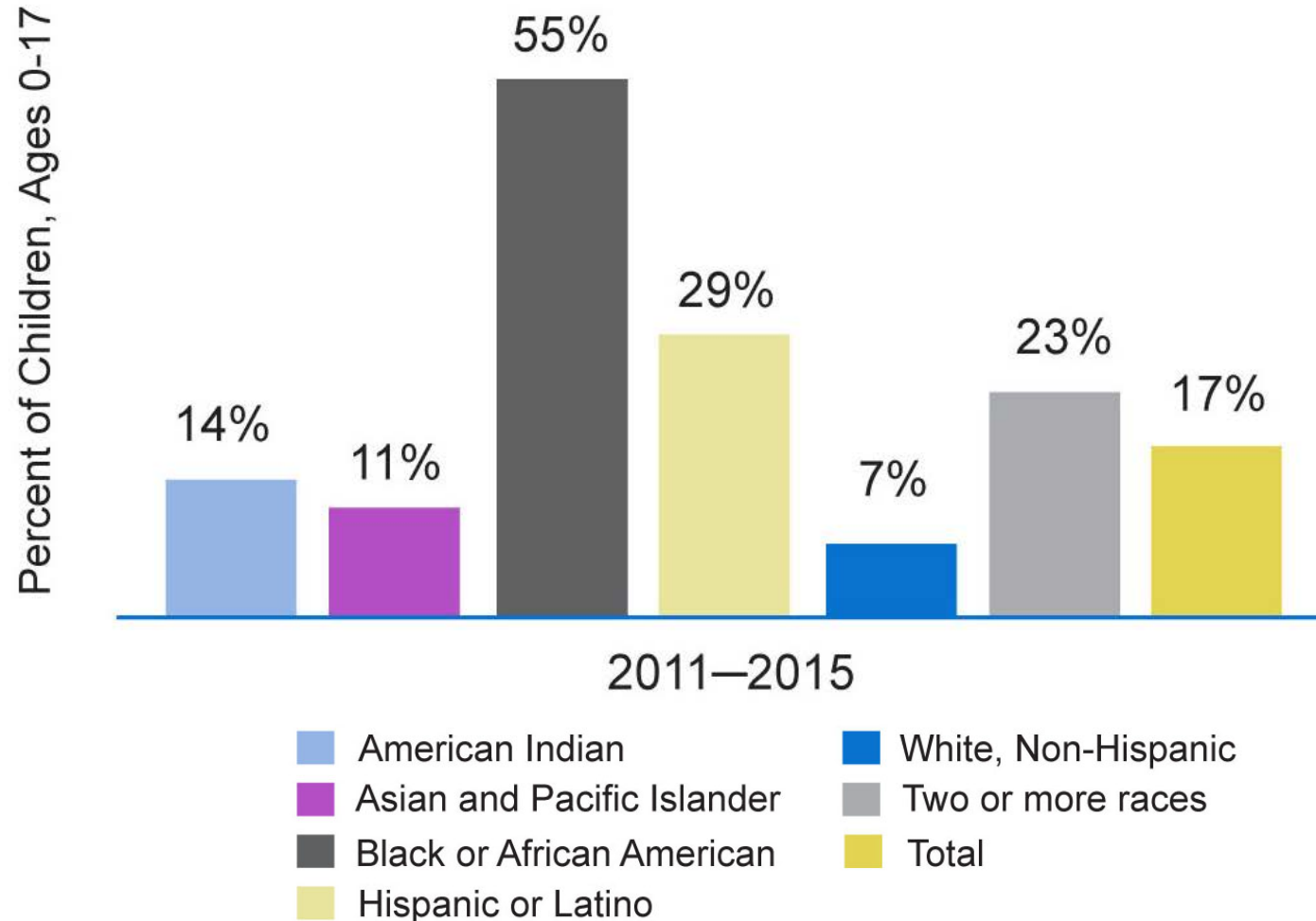
A college education is often the key to economic security, yet the cumulative impact of racial, ethnic and economic inequities means that many young people don't have a shot at the American dream.



Source: MI School Data, Center for Educational Performance and Information

Many children of color live in high poverty neighborhoods

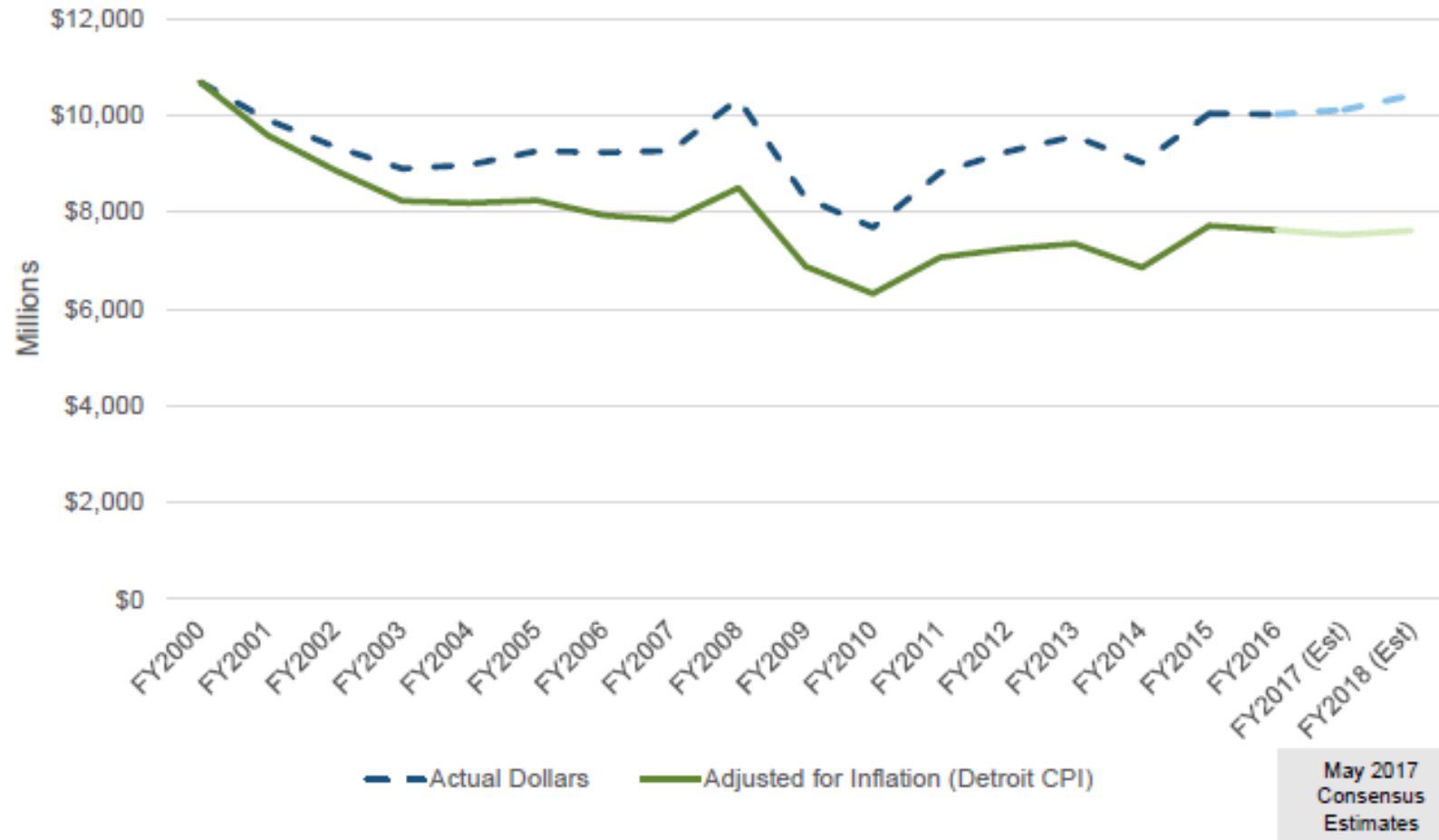
HIGH-POVERTY NEIGHBORHOODS



A major threat to a whole child approach: dwindling state funds

Adjusted for inflation GF/GP revenue in 2018 is expected to be nearly 30% below 2000 levels

State GF/GP Funds Are Not Keeping Up With Increases in Costs

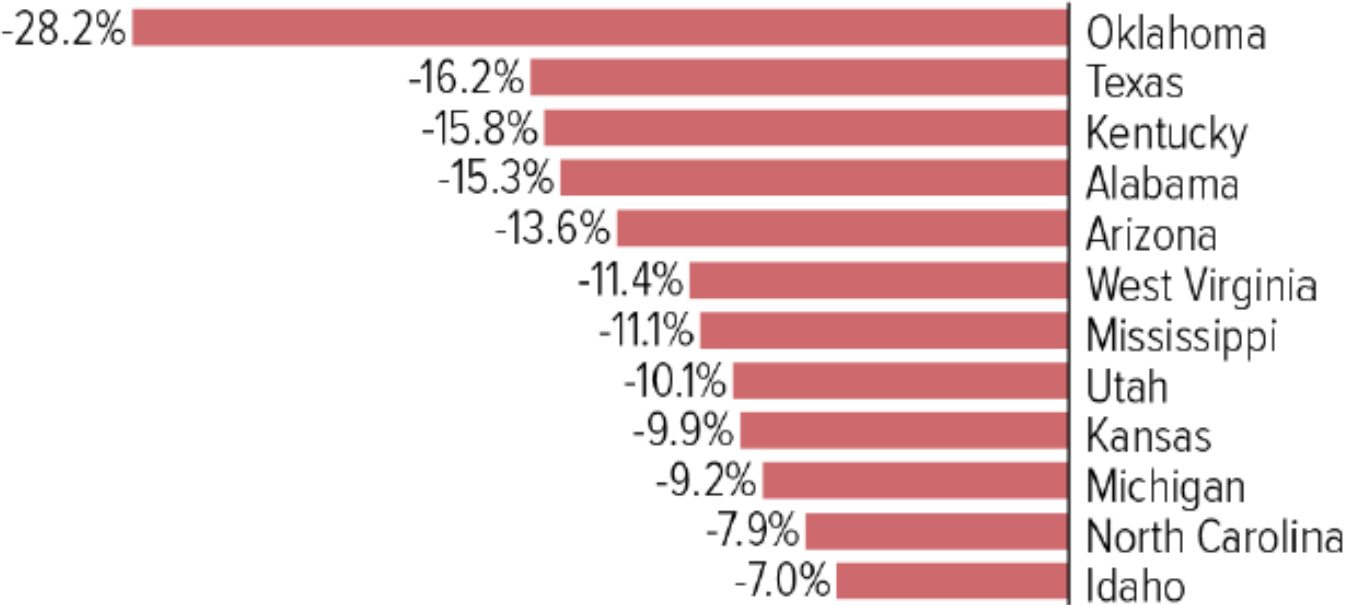


Source: House Fiscal Agency, August 2017

Public schools are trying to do more with less

State General Funding Per Student Still Far Below 2008 in at Least 12 States

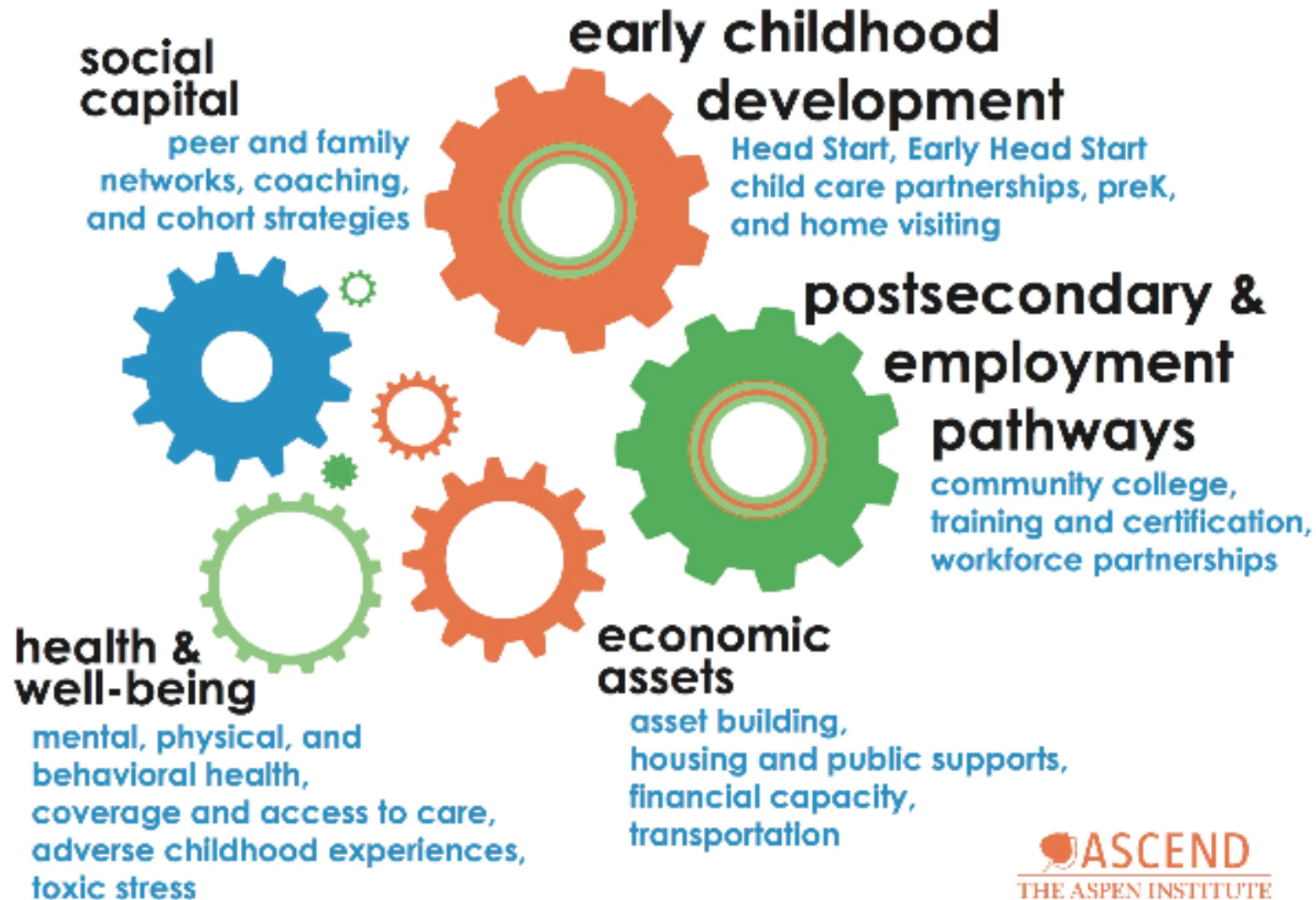
Percent change in state formula funding* per student, inflation adjusted, fiscal years 2008-2018



*General or formula funding is the primary form of state K-12 funding. States also typically provide revenue for other, more specific purposes, such as bus transportation and contributions to school employees and pension plans.

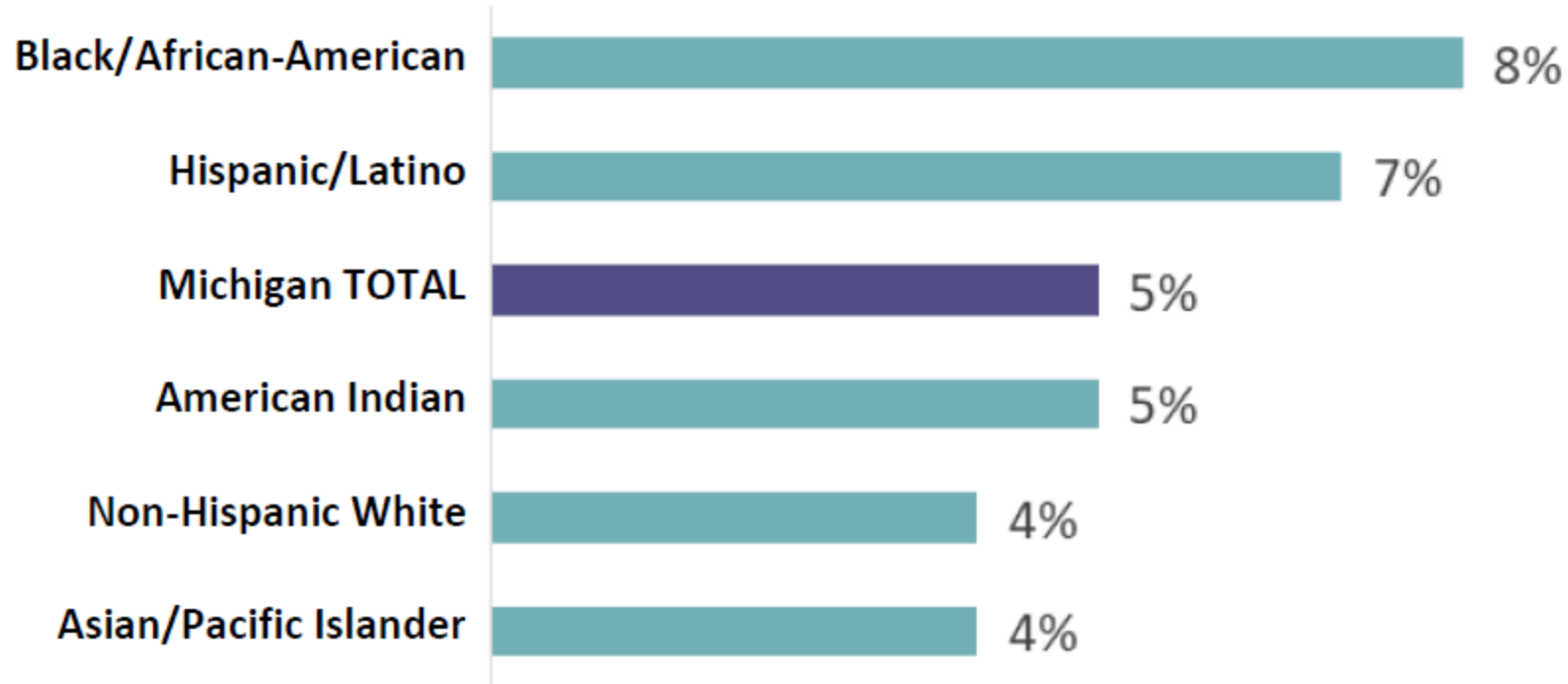
Source: CBPP budget and enrollment analysis.

A two generation approach to improving education and reducing inequities



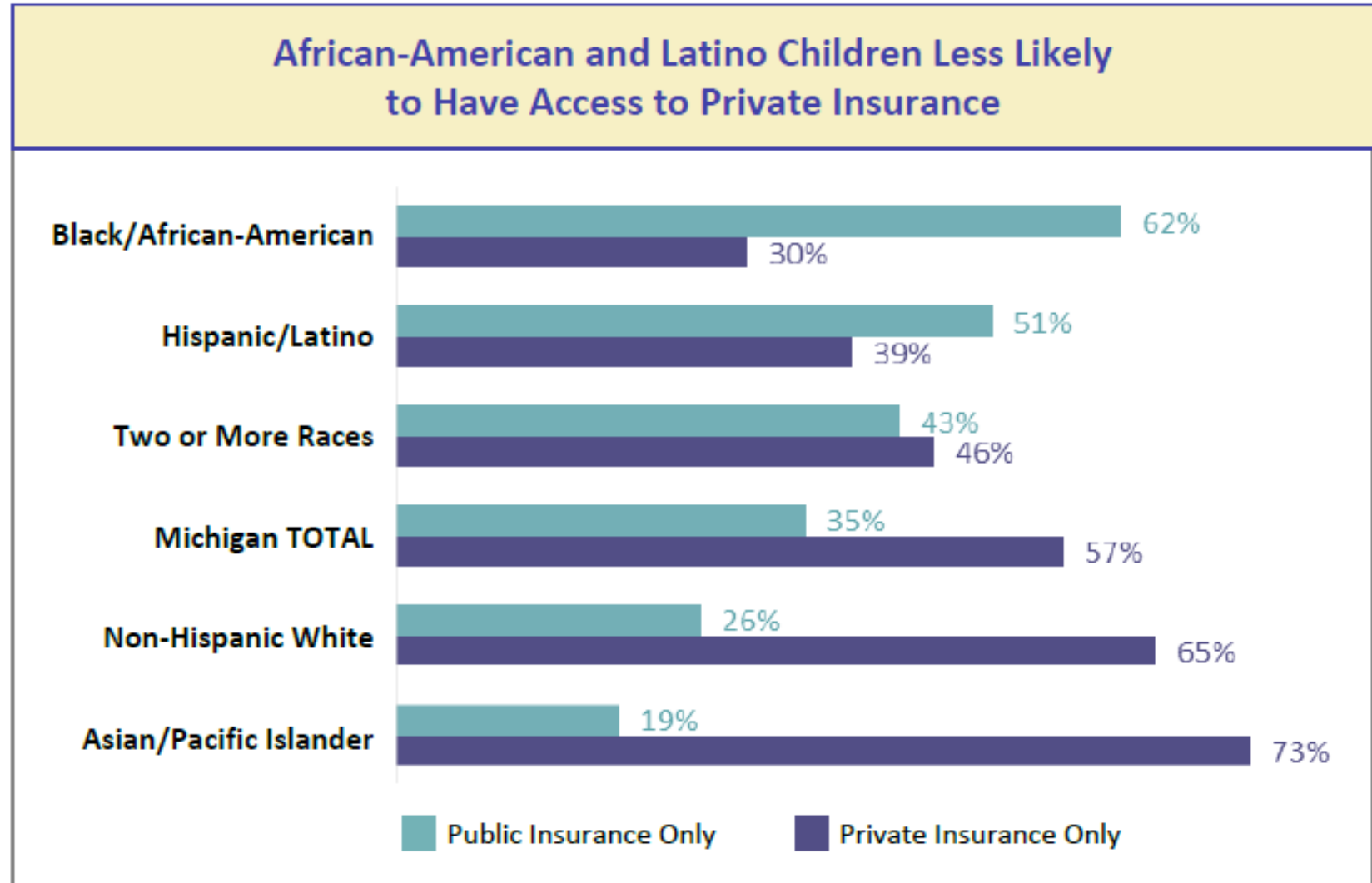
Begin prenatally to ensure children are born healthy and ready to learn

African-American and Latino Mothers More Likely to Have Late or No Prenatal Care



Make sure children *and* their parents are healthy

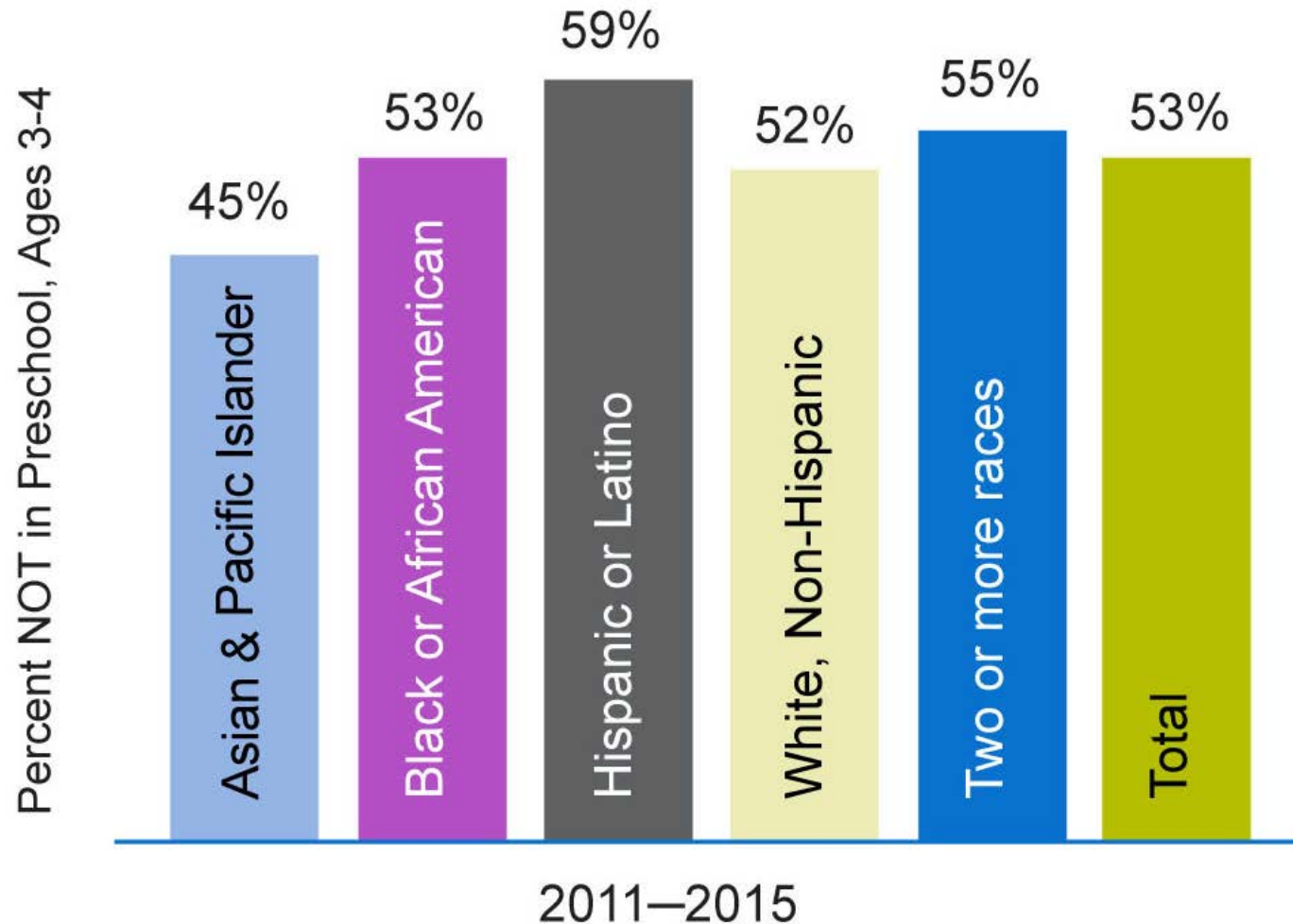
The majority of the state's children of color are covered by public health insurance—unlike their White counterparts



Source: Kids Count Data Center

Guarantee high quality early learning and care opportunities for all children

EARLY CARE & EDUCATION



Recommendations

- Meet the basic needs of children and their families
- Strengthen public education in Michigan—beginning early:
 - Provide funding for Early On
 - Expand funding for evidence-based home visitation programs
 - Fund comprehensive programs for children from birth to third-grade
 - Adequately fund the implementation of the Third-Grade Reading Law
- Fully fund the At-Risk program
- Expand funding for adult education
- Increase access to affordable, high-quality child care
 - Expand eligibility levels for families
 - Reform the hourly reimbursement payment system

Need additional data?

County profiles from the Kids Count in Michigan Data Book:

www.mlpp.org

KIDS COUNT Data Center includes Michigan, county, city and township, and Congressional districts:

www.datacenter.kidscount.org

The image shows a promotional graphic for the Kids Count Data Center. At the top left, it says "KIDS COUNT DATA CENTER" in orange and white text. To the right is an orange button with the URL "datacenter.kidscount.org". Below this is a central blue box with the word "VISUALIZE" in large orange letters. Above "VISUALIZE" is a circular icon containing a bar chart, a pie chart, and a line graph. To the left of the "VISUALIZE" box is a purple box with a magnifying glass icon and the word "SEARCH" in white. Below "SEARCH" is a small text box: "Enter any location, topic or keyword into the powerful search engine to find the statistics most relevant to your community." To the right of the "VISUALIZE" box is a blue box with the word "SHARE" in white. Above "SHARE" are icons for Facebook, Twitter, and Pinterest. Below "SHARE" is a small text box: "Post data visualizations on Facebook, add custom graphics to Tumblr and tweet about how the well-being of your state's children compares with the region and nation." Below the "VISUALIZE" box are four smaller boxes, each with a title and a small icon: "Create custom profiles" (with a table icon), "Create maps" (with a map icon), "Create line graphs" (with a line graph icon), and "Create bar charts" (with a bar chart icon).

KIDS COUNT DATA CENTER datacenter.kidscount.org

Hundreds of child well-being indicators at your fingertips to encourage policies and support smart decisions for children and families.

1 SEARCH
Enter any location, topic or keyword into the powerful search engine to find the statistics most relevant to your community.

2 VISUALIZE

3 SHARE
Post data visualizations on Facebook, add custom graphics to Tumblr and tweet about how the well-being of your state's children compares with the region and nation.

Create custom profiles Create maps
Create line graphs Create bar charts



Thank You!

[gjacobson@mlpp.org](mailto:gjacobs@mlpp.org)

Website: www.mlpp.org

Sign up for “Email Alerts”

Become a member

