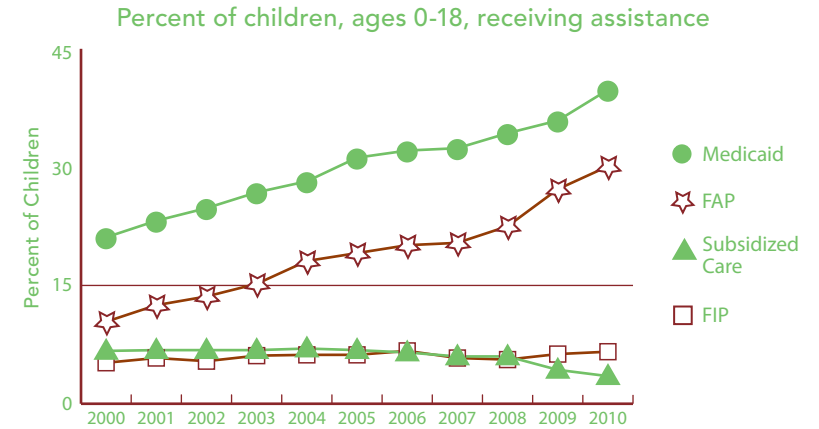


URBAN

BACKGROUND INFORMATION (ALL DATA ARE FOR 2010 UNLESS OTHERWISE NOTED.)



	NUMBER	RATE	MI
FAMILY SUPPORT PROGRAMS			
Children receiving...			
• subsidized child care, ages 0–12 ¹	49,917	3.5%	3.4%
• FIP cash assistance ^{1,3}	141,917	6.6%	6.2%
• Food Assistance Program ^{1,4}	651,239	30.1%	30.4%
Children with support owed			
• receiving none (% of those owed)	148,451	31.4%	29.5%
• receiving less than 70% of amount	302,363	64.0%	62.6%



Source: Michigan Department of Human Services and Michigan Department of Community Health, Vital Records and Health Data Development Section.

	2000	2010	% CHANGE
POPULATION			
Child population			
0–17	2,225,312	2,018,566	-9.3%
• Ages 0–4	583,426	514,766	-11.8%
• Ages 5–9	640,817	549,910	-14.2%
• Ages 10–14	637,788	580,977	-8.9%
• Ages 15–19	609,752	638,434	4.7%

	NUMBER	RATE	MI
ACCESS TO HEALTH CARE			
Children insured	1,997,521	95.1%	94.9%
Children, ages 0–18 insured by...			
• Medicaid ¹	859,076	39.8%	40.7%
• MICHild	25,026	1.2%	1.2%
Fully immunized toddlers, ages 19–35 months (for the series 4:3:1:3:3:1) ¹	108,137	70.4%	70.0%
Lead poisoning in children, ages 1–2			
• tested	76,975	36.0%	36.2%
• poisoned (% of tested)	709	0.9%	0.8%
Children, ages 1–14, hospitalized for asthma (rate per 10,000) ²	3,436	22.1	20.8
CHILDREN WITH SPECIAL NEEDS			
Babies with a birth defect**	7,458	6.9%	6.6%
Students in Special Education ¹	192,027	14.2%	14.4%
Children receiving Supplemental Security Income (rate per 1,000) ¹	39,430	19.4	19.2

¹ As of December 2010.

² Annual rate and number are based on the three-year period 2007–2009 and only for counties with a total number over 20.

³ Family Independence Program.

⁴ State name for the federal Supplemental Nutrition Assistance Program, formerly called "food stamps."

Note: Percentages reflect percent of population unless otherwise noted.

* Sometimes a rate could not be calculated because of low incidence of events or unavailable data.

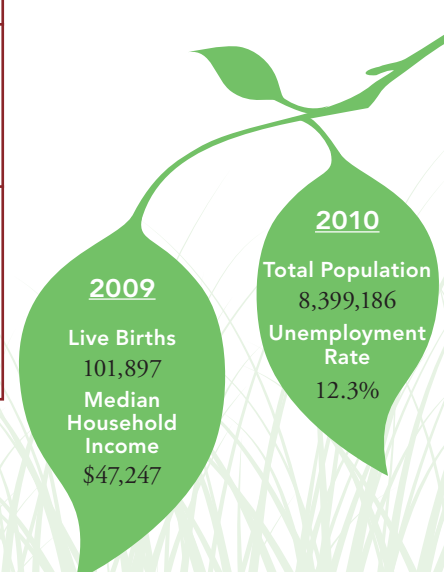
** Based on three year period 2006–2008.

N/A not available.

See Data Notes and Definitions for details.

TRENDS IN CHILD WELL-BEING 2000–2008/09**

	BASE YEAR		CURRENT YEAR		RANK ¹	MI RATE	PERCENT CHANGE IN RATE	
	NUMBER	RATE	NUMBER	RATE			WORSE	BETTER
Economic Security**	2005		2009					
Children in poverty								
• ages 0–17	388,578	18.1%	436,326	21.8%	—	22.2%	20	
• ages 5–17	264,837	16.8%	291,357	19.9%	—	20.2%	18	
	2006		2010					
Students receiving free/reduced price school lunches ²	511,162	35.1%	613,859	45.4%	—	46.5%	29	
Child Health	1998–2000		2007–2009					
Less than adequate prenatal care (2008–09) ⁺⁺	—	—	29,948	28.9%	—	29.5%		
Low-birthweight babies	9,499	8.1%	9,129	8.7%	—	8.5%	7	
Infant mortality (per 1,000)	967	8.3	826	7.8	—	7.6		5
Child deaths, ages 1–14 (per 100,000)	392	22.4	270	17.1	—	17.4		24
Adolescence								
Births to teens, ages 15–19 (per 1,000)	12,379	41.6	10,362	32.9	—	33.3		21
Teen deaths (per 100,000)	366	60.6	353	55.3	—	55.6		9
	2007		2010					
High school dropouts**	17,572	14.9%	13,015	11.2%	—	11.1%		25
Abuse/Neglect (per 1,000)	FY2000		FY2010					
Children in investigated families	143,943	64.5	134,192	65.9	—	70.1		2
Confirmed victims	23,069	10.3	26,276	12.9	—	13.8	25	
Children in out-of-home care	15,696	7.1	10,400	5.1	—	5.1		27
Education (not proficient in math)	2003		2010					
Fourth grade (MEAP)	37,560	35.1%	8,446	8.7%	—	8.5%		75
Eighth grade (MEAP)	52,364	48.4%	22,073	22.3%	—	22.0%		54
	2008		2010					
High school students (MME)	51,280	53.7%	45,690	49.4%	—	49.6%		8



¹ A ranking of 1 means a county has the “best” rate compared to other counties in the state. Unless noted, the ranking is based on 82–83 counties.

² Family income for eligible students is below 185 percent poverty level.

* Sometimes a rate could not be calculated because of low incidence of events or unavailable data.

** Due to changes in the data measures, comparisons between 2000 and the current year could not be made for some indicators.

++ Due to Michigan’s revised birth certificate, 2008–09 data cannot be compared with those of previous years.

MME – Michigan Merit Exam instead of the MEAP.

Beginning in 2007 Michigan high school students have taken the ACT college entrance exam.

Missing bars indicate no change or a rate could not be calculated; a “0” reflects no change. Percentage change is calculated with unrounded rates.