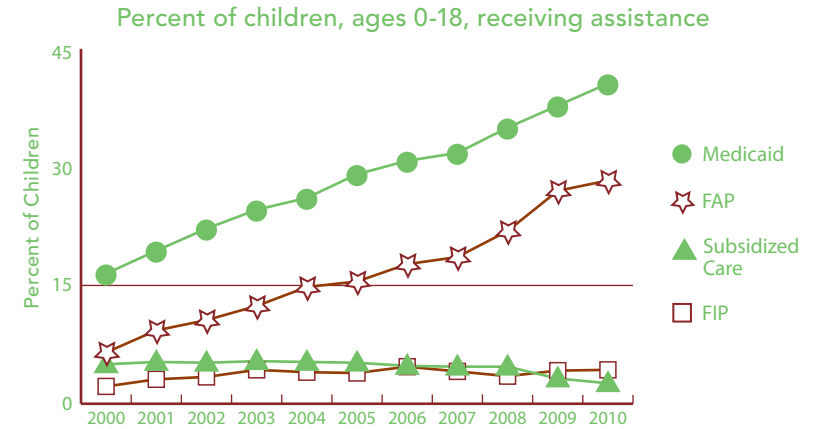


BACKGROUND INFORMATION (ALL DATA ARE FOR 2010 UNLESS OTHERWISE NOTED.)



	NUMBER	RATE	MI
FAMILY SUPPORT PROGRAMS			
Children receiving...			
• subsidized child care, ages 0–12 ¹	708	2.6%	3.4%
• FIP cash assistance ^{1,3}	1,818	4.3%	6.2%
• Food Assistance Program ^{1,4}	11,909	28.3%	30.4%
Children with support owed			
• receiving none (% of those owed)	2,285	25.8%	29.5%
• receiving less than 70% of amount	5,485	61.9%	62.6%



Source: Michigan Department of Human Services and Michigan Department of Community Health, Vital Records and Health Data Development Section.

	2000	2010	% CHANGE
POPULATION			
Child population			
0–17	44,038	38,613	-12.3%
• Ages 0-4	11,041	9,288	-15.9%
• Ages 5-9	12,363	10,402	-15.9%
• Ages 10-14	12,960	11,424	-11.9%
• Ages 15-19	11,936	11,762	-1.5%

	NUMBER	RATE	MI
ACCESS TO HEALTH CARE			
Children insured	39,110	95.0%	94.9%
Children, ages 0–18 insured by...			
• Medicaid ¹	17,100	40.6%	40.7%
• MICHild	684	1.6%	1.2%
Fully immunized toddlers, ages 19–35 months (for the series 4:3:1:3:3:1) ¹	1,772	67.6%	70.0%
Lead poisoning in children, ages 1–2			
• tested	818	20.9%	36.2%
• poisoned (% of tested)	1	*	0.8%
Children, ages 1–14, hospitalized for asthma (rate per 10,000) ²	45	15.2	20.8
CHILDREN WITH SPECIAL NEEDS			
Babies with a birth defect**	70	3.7%	6.6%
Students in Special Education ¹	4,387	17.3%	14.4%
Children receiving Supplemental Security Income (rate per 1,000) ¹	516	13.0	19.2

¹ As of December 2010.

² Annual rate and number are based on the three-year period 2007–2009 and only for counties with a total number over 20.

³ Family Independence Program.

⁴ State name for the federal Supplemental Nutrition Assistance Program, formerly called "food stamps."

Note: Percentages reflect percent of population unless otherwise noted.

* Sometimes a rate could not be calculated because of low incidence of events or unavailable data.

** Based on three year period 2006-2008.

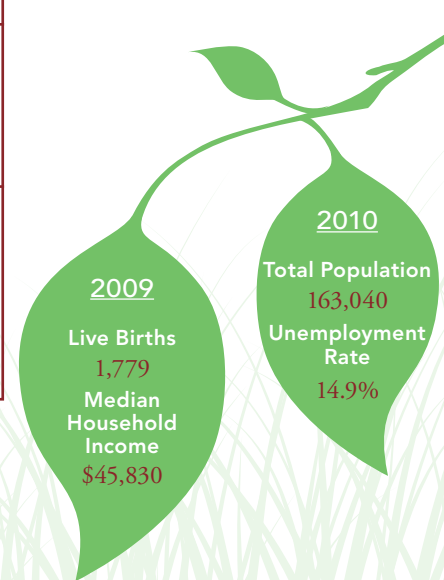
N/A not available.

See Data Notes and Definitions for details.

TRENDS IN CHILD WELL-BEING 2000–2008/09**



	BASE YEAR		CURRENT YEAR		RANK ¹	MI RATE	PERCENT CHANGE IN RATE	
	NUMBER	RATE	NUMBER	RATE			WORSE	BETTER
Economic Security**	<u>2005</u>		<u>2009</u>					
Children in poverty								
• ages 0–17	5,772	13.9%	7,202	18.6%	20	22.2%	34	
• ages 5–17	3,827	12.3%	4,676	16.1%	19	20.2%	31	
	<u>2006</u>		<u>2010</u>					
Students receiving free/reduced price school lunches ²	8,756	31.5%	10,849	42.7%	18	46.5%	36	
Child Health	<u>1998–2000</u>		<u>2007–2009</u>					
Less than adequate prenatal care (2008–09)‡	—	—	443	24.6%	20	29.5%		
Low-birthweight babies	133	6.3%	152	8.3%	61 of 81	8.5%	32	
Infant mortality (per 1,000)	13	6.0	11	6.2	17 of 49	7.6	3	
Child deaths, ages 1–14 (per 100,000)	6	16.6	4	13.2	3 of 34	17.4		20
Adolescence								
Births to teens, ages 15–19 (per 1,000)	232	40.5	181	31.5	36	33.3		22
Teen deaths (per 100,000)	7	59.7	7	59.2	26 of 39	55.6		1
	<u>2007</u>		<u>2010</u>					
High school dropouts**	284	12.5%	226	10.8%	62 of 80	11.1%		14
Abuse/Neglect (per 1,000)	<u>FY2000</u>		<u>FY2010</u>					
Children in investigated families	3,310	75.3	4,144	104.0	60	70.1	38	
Confirmed victims	377	8.6	673	16.9	43	13.8	97	
Children in out-of-home care	293	6.7	271	6.8	59 of 76	5.1		2
Education (not proficient in math)	<u>2003</u>		<u>2010</u>					
Fourth grade (MEAP)	579	28.8%	135	7.7%	41	8.5%		73
Eighth grade (MEAP)	861	40.5%	397	20.6%	46	22.0%		49
	<u>2008</u>		<u>2010</u>					
High school students (MME)	1,098	54.2%	853	44.4%	21	49.6%		18



¹ A ranking of 1 means a county has the “best” rate compared to other counties in the state. Unless noted, the ranking is based on 82–83 counties.
² Family income for eligible students is below 185 percent poverty level.
 * Sometimes a rate could not be calculated because of low incidence of events or unavailable data.
 ** Due to changes in the data measures, comparisons between 2000 and the current year could not be made for some indicators.
 ‡ Due to Michigan’s revised birth certificate, 2008–09 data cannot be compared with those of previous years.
 MME – Michigan Merit Exam instead of the MEAP.
 Beginning in 2007 Michigan high school students have taken the ACT college entrance exam.

Missing bars indicate no change or a rate could not be calculated; a “0” reflects no change. Percentage change is calculated with unrounded rates.