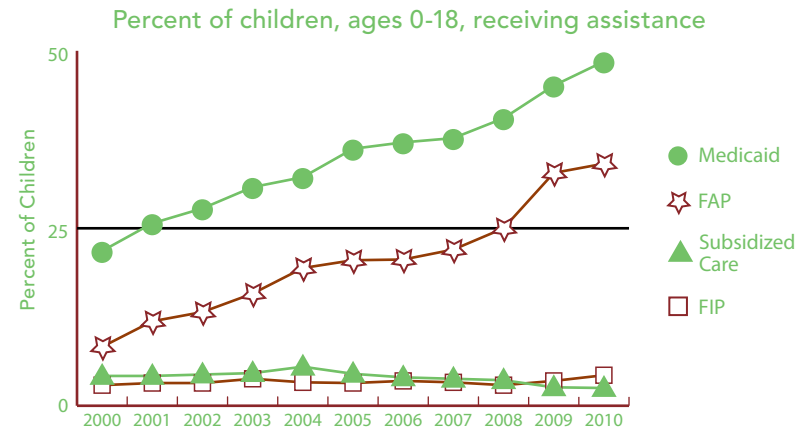


BACKGROUND INFORMATION (ALL DATA ARE FOR 2010 UNLESS OTHERWISE NOTED.)



	NUMBER	RATE	MI
<b>FAMILY SUPPORT PROGRAMS</b>			
<b>Children receiving...</b>			
• subsidized child care, ages 0–12 <sup>1</sup>	211	2.5%	3.4%
• FIP cash assistance <sup>1,3</sup>	559	4.3%	6.2%
• Food Assistance Program <sup>1,4</sup>	4,447	34.1%	30.4%
<b>Children with support owed</b>			
• receiving none (% of those owed)	496	18.0%	29.5%
• receiving less than 70% of amount	1,533	55.7%	62.6%



Source: Michigan Department of Human Services and Michigan Department of Community Health, Vital Records and Health Data Development Section.



	2000	2010	% CHANGE
<b>POPULATION</b>			
Child population 0–17	13,940	12,097	-13.2%
• Ages 0-4	3,284	3,018	-8.1%
• Ages 5-9	3,867	3,230	-16.5%
• Ages 10-14	4,380	3,533	-19.3%
• Ages 15-19	3,665	3,594	-1.9%

	NUMBER	RATE	MI
<b>ACCESS TO HEALTH CARE</b>			
Children insured	12,102	94.3%	94.9%
Children, ages 0–18 insured by...			
• Medicaid <sup>1</sup>	6,322	48.5%	40.7%
• MICHild	144	1.1%	1.2%
Fully immunized toddlers, ages 19–35 months (for the series 4:3:1:3:3:1) <sup>1</sup>	577	72.8%	70.0%
Lead poisoning in children, ages 1–2			
• tested	478	37.4%	36.2%
• poisoned (% of tested)	1	*	0.8%
Children, ages 1–14, hospitalized for asthma (rate per 10,000) <sup>2</sup>	6	*	20.8
<b>CHILDREN WITH SPECIAL NEEDS</b>			
Babies with a birth defect**	37	5.7%	6.6%
Students in Special Education <sup>1</sup>	1,402	16.5%	14.4%
Children receiving Supplemental Security Income (rate per 1,000) <sup>1</sup>	225	18.3	19.2

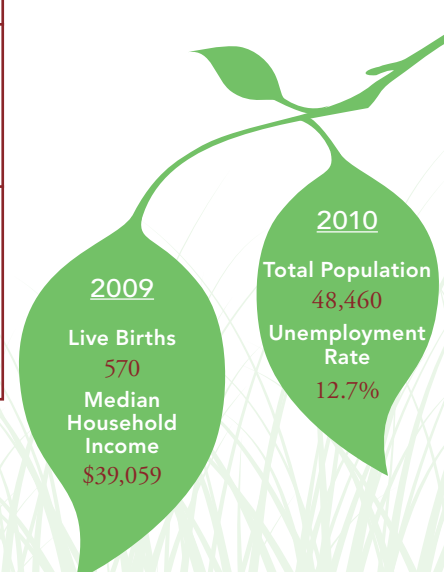
1 As of December 2010.  
 2 Annual rate and number are based on the three-year period 2007–2009 and only for counties with a total number over 20.  
 3 Family Independence Program.  
 4 State name for the federal Supplemental Nutrition Assistance Program, formerly called “food stamps.”

Note: Percentages reflect percent of population unless otherwise noted.  
 \* Sometimes a rate could not be calculated because of low incidence of events or unavailable data.  
 \*\* Based on three year period 2006-2008.  
 N/A not available.  
 See Data Notes and Definitions for details.

TRENDS IN CHILD WELL-BEING 2000–2008/09\*\*



	BASE YEAR		CURRENT YEAR		RANK <sup>1</sup>	MI RATE	PERCENT CHANGE IN RATE	
	NUMBER	RATE	NUMBER	RATE			WORSE	BETTER
<b>Economic Security**</b>	<u>2005</u>		<u>2009</u>					
Children in poverty								
• ages 0–17	2,422	18.8%	3,210	26.7%	61	22.2%	42	
• ages 5–17	1,615	16.6%	2,100	23.8%	61	20.2%	43	
	<u>2006</u>		<u>2010</u>					
Students receiving free/reduced price school lunches <sup>2</sup>	4,142	44.3%	4,768	56.1%	59	46.5%	27	
<b>Child Health</b>	<u>1998–2000</u>		<u>2007–2009</u>					
Less than adequate prenatal care (2008–09)‡	—	—	179	30.5%	39	29.5%		
Low-birthweight babies	39	6.1%	43	6.9%	31 of 81	8.5%	13	
Infant mortality (per 1,000)	4	5.8	5	8.1	37 of 49	7.6	40	
Child deaths, ages 1–14 (per 100,000)	1	*	3	28.8	30 of 34	17.4		
<b>Adolescence</b>								
Births to teens, ages 15–19 (per 1,000)	101	58.1	86	47.5	69	33.3		18
Teen deaths (per 100,000)	3	74.9	1	*	* of 39	55.6		
	<u>2007</u>		<u>2010</u>					
High school dropouts**	96	12.2%	51	6.6%	24 of 80	11.1%		46
<b>Abuse/Neglect (per 1,000)</b>	<u>FY2000</u>		<u>FY2010</u>					
Children in investigated families	1,283	92.1	1,280	104.0	60	70.1	13	
Confirmed victims	123	8.8	276	22.4	59	13.8	154	
Children in out-of-home care	26	1.9	42	3.4	16 of 76	5.1	83	
<b>Education (not proficient in math)</b>	<u>2003</u>		<u>2010</u>					
Fourth grade (MEAP)	232	35.8%	26	4.5%	8	8.5%		87
Eighth grade (MEAP)	331	47.2%	148	22.6%	57	22.0%		52
	<u>2008</u>		<u>2010</u>					
High school students (MME)	372	58.7%	308	52.0%	52	49.6%		11



<sup>1</sup> A ranking of 1 means a county has the “best” rate compared to other counties in the state. Unless noted, the ranking is based on 82–83 counties.

<sup>2</sup> Family income for eligible students is below 185 percent poverty level.

\* Sometimes a rate could not be calculated because of low incidence of events or unavailable data.

\*\* Due to changes in the data measures, comparisons between 2000 and the current year could not be made for some indicators.

‡ Due to Michigan’s revised birth certificate, 2008–09 data cannot be compared with those of previous years.

MME – Michigan Merit Exam instead of the MEAP.

Beginning in 2007 Michigan high school students have taken the ACT college entrance exam.

Missing bars indicate no change or a rate could not be calculated; a “0” reflects no change.

Percentage change is calculated with unrounded rates.