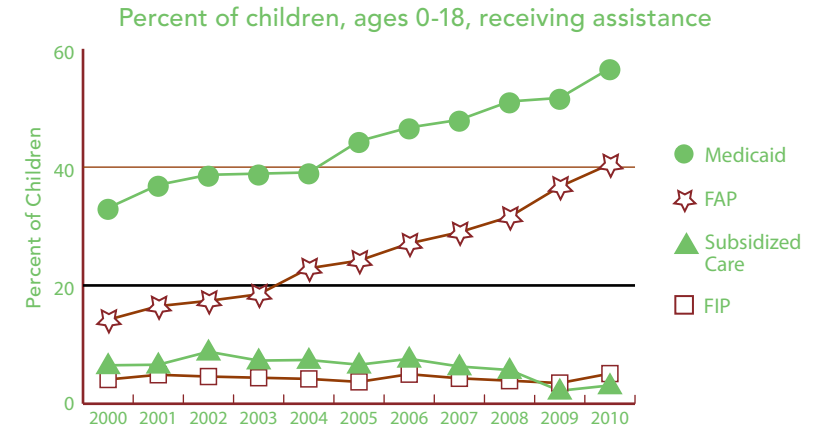


# MONTMORENCY

BACKGROUND INFORMATION (ALL DATA ARE FOR 2010 UNLESS OTHERWISE NOTED.)



	NUMBER	RATE	MI
<b>FAMILY SUPPORT PROGRAMS</b>			
<b>Children receiving...</b>			
• subsidized child care, ages 0–12 <sup>1</sup>	34	3.1%	3.4%
• FIP cash assistance <sup>1,3</sup>	90	5.1%	6.2%
• Food Assistance Program <sup>1,4</sup>	716	40.5%	30.4%
<b>Children with support owed</b>			
• receiving none (% of those owed)	70	17.4%	29.5%
• receiving less than 70% of amount	240	59.7%	62.6%



Source: Michigan Department of Human Services and Michigan Department of Community Health, Vital Records and Health Data Development Section.

	2000	2010	% CHANGE
<b>POPULATION</b>			
<b>Child population 0–17</b>			
• Ages 0–4	456	377	-17.3%
• Ages 5–9	536	443	-17.4%
• Ages 10–14	649	512	-21.1%
• Ages 15–19	681	475	-30.2%

	NUMBER	RATE	MI
<b>ACCESS TO HEALTH CARE</b>			
Children insured	1,633	93.5%	94.9%
Children, ages 0–18 insured by...			
• Medicaid <sup>1</sup>	1,002	56.7%	40.7%
• MICHild	34	1.9%	1.2%
Fully immunized toddlers, ages 19–35 months (for the series 4:3:1:3:3:1) <sup>1</sup>	82	69.5%	70.0%
Lead poisoning in children, ages 1–2			
• tested	78	48.1%	36.2%
• poisoned (% of tested)	0	*	0.8%
Children, ages 1–14, hospitalized for asthma (rate per 10,000) <sup>2</sup>	*	*	20.8
<b>CHILDREN WITH SPECIAL NEEDS</b>			
Babies with a birth defect**	5	6.4%	6.6%
Students in Special Education <sup>1</sup>	121	14.5%	14.4%
Children receiving Supplemental Security Income (rate per 1,000) <sup>1</sup>	51	30.5	19.2

<sup>1</sup> As of December 2010.

<sup>2</sup> Annual rate and number are based on the three-year period 2007–2009 and only for counties with a total number over 20.

<sup>3</sup> Family Independence Program.

<sup>4</sup> State name for the federal Supplemental Nutrition Assistance Program, formerly called “food stamps.”

Note: Percentages reflect percent of population unless otherwise noted.

\* Sometimes a rate could not be calculated because of low incidence of events or unavailable data.

\*\* Based on three year period 2006–2008.

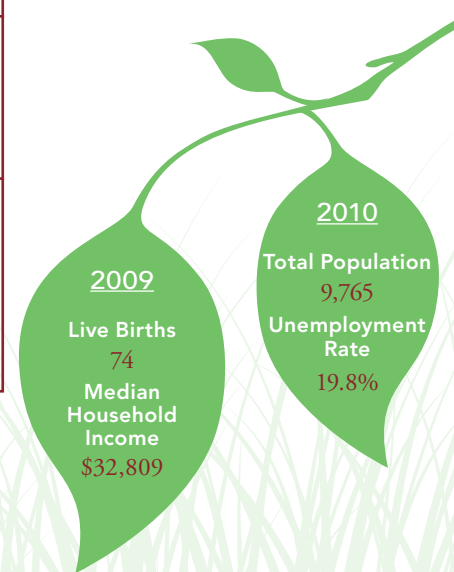
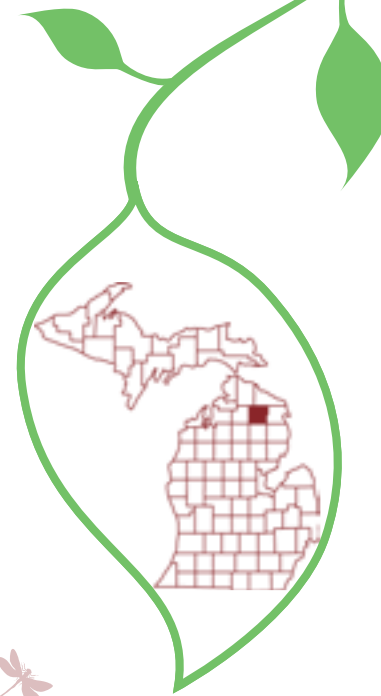
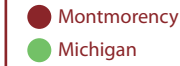
N/A not available.

See Data Notes and Definitions for details.

TRENDS IN CHILD WELL-BEING 2000–2008/09\*\*



	BASE YEAR		CURRENT YEAR		RANK <sup>1</sup>	MI RATE	PERCENT CHANGE IN RATE	
	NUMBER	RATE	NUMBER	RATE			WORSE	BETTER
<b>Economic Security**</b>	<u>2005</u>		<u>2009</u>					
Children in poverty								
• ages 0–17	525	28.3%	577	35.2%	80	22.2%	24	
• ages 5–17	372	26.5%	392	32.1%	79	20.2%	21	
	<u>2006</u>		<u>2010</u>					
Students receiving free/reduced price school lunches <sup>2</sup>	518	53.8%	565	67.8%	81	46.5%	26	
<b>Child Health</b>	<u>1998–2000</u>		<u>2007–2009</u>					
Less than adequate prenatal care (2008–09)‡	—	—	16	22.4%	14	29.5%		
Low-birthweight babies	5	5.1%	5	6.7%	24 of 81	8.5%	30	
Infant mortality (per 1,000)	0	*	0	*	* of 49	7.6		
Child deaths, ages 1–14 (per 100,000)	0	*	0	*	* of 34	17.4		
<b>Adolescence</b>								
Births to teens, ages 15–19 (per 1,000)	13	40.8	5	17.0	6	33.3		58
Teen deaths (per 100,000)	0	*	0	*	* of 39	55.6		
	<u>2007</u>		<u>2010</u>					
High school dropouts**	13	11.8%	4	*	* of 80	11.1%		
<b>Abuse/Neglect (per 1,000)</b>	<u>FY2000</u>		<u>FY2010</u>					
Children in investigated families	174	83.1	141	84.4	35	70.1		2
Confirmed victims	17	8.1	35	21.0	54	13.8	158	
Children in out-of-home care	3	*	10	6.0	52 of 76	5.1		
<b>Education (not proficient in math)</b>	<u>2003</u>		<u>2010</u>					
Fourth grade (MEAP)	37	54.5%	2	3.4%	4	8.5%		94
Eighth grade (MEAP)	49	55.1%	24	35.3%	81	22.0%		36
	<u>2008</u>		<u>2010</u>					
High school students (MME)	48	70.6%	45	68.2%	81	49.6%		3



<sup>1</sup> A ranking of 1 means a county has the “best” rate compared to other counties in the state. Unless noted, the ranking is based on 82–83 counties.

<sup>2</sup> Family income for eligible students is below 185 percent poverty level.

\* Sometimes a rate could not be calculated because of low incidence of events or unavailable data.

\*\* Due to changes in the data measures, comparisons between 2000 and the current year could not be made for some indicators.

‡ Due to Michigan’s revised birth certificate, 2008–09 data cannot be compared with those of previous years.

MME – Michigan Merit Exam instead of the MEAP.

Beginning in 2007 Michigan high school students have taken the ACT college entrance exam.

Missing bars indicate no change or a rate could not be calculated; a “0” reflects no change.

Percentage change is calculated with unrounded rates.