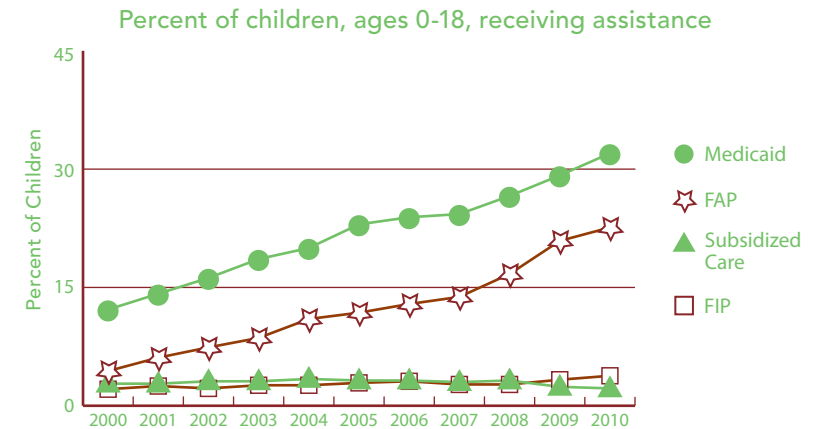


# MONROE

## BACKGROUND INFORMATION (ALL DATA ARE FOR 2010 UNLESS OTHERWISE NOTED.)



	NUMBER	RATE	MI
<b>FAMILY SUPPORT PROGRAMS</b>			
<b>Children receiving...</b>			
• subsidized child care, ages 0–12 <sup>1</sup>	535	2.2%	3.4%
• FIP cash assistance <sup>1,3</sup>	1,462	3.8%	6.2%
• Food Assistance Program <sup>1,4</sup>	8,629	22.6%	30.4%
<b>Children with support owed</b>			
• receiving none (% of those owed)	1,340	18.3%	29.5%
• receiving less than 70% of amount	3,698	50.5%	62.6%



Source: Michigan Department of Human Services and Michigan Department of Community Health, Vital Records and Health Data Development Section.



	2000	2010	% CHANGE
<b>POPULATION</b>			
<b>Child population</b>			
0–17	40,047	36,677	-8.4%
• Ages 0–4	9,688	8,719	-10.0%
• Ages 5–9	11,086	9,841	-11.2%
• Ages 10–14	12,147	11,053	-9.0%
• Ages 15–19	10,991	11,219	2.1%

	NUMBER	RATE	MI
<b>ACCESS TO HEALTH CARE</b>			
Children insured	35,409	95.5%	94.9%
Children, ages 0–18 insured by...			
• Medicaid <sup>1</sup>	12,234	32.0%	40.7%
• MICHild	449	1.2%	1.2%
Fully immunized toddlers, ages 19–35 months (for the series 4:3:1:3:3:1) <sup>1</sup>	1,481	66.1%	70.0%
Lead poisoning in children, ages 1–2			
• tested	1,387	40.1%	36.2%
• poisoned (% of tested)	3	*	0.8%
Children, ages 1–14, hospitalized for asthma (rate per 10,000) <sup>2</sup>	50	18.9	20.8
<b>CHILDREN WITH SPECIAL NEEDS</b>			
Babies with a birth defect**	78	4.5%	6.6%
Students in Special Education <sup>1</sup>	3,862	16.5%	14.4%
Children receiving Supplemental Security Income (rate per 1,000) <sup>1</sup>	471	13.0	19.2

<sup>1</sup> As of December 2010.

<sup>2</sup> Annual rate and number are based on the three-year period 2007–2009 and only for counties with a total number over 20.

<sup>3</sup> Family Independence Program.

<sup>4</sup> State name for the federal Supplemental Nutrition Assistance Program, formerly called “food stamps.”

Note: Percentages reflect percent of population unless otherwise noted.

\* Sometimes a rate could not be calculated because of low incidence of events or unavailable data.

\*\* Based on three year period 2006–2008.

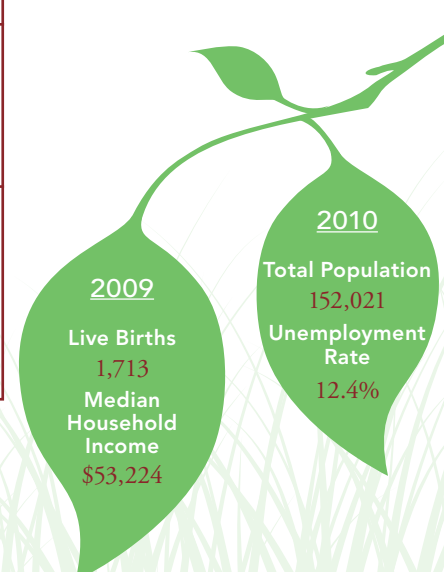
N/A not available.

See Data Notes and Definitions for details.

TRENDS IN CHILD WELL-BEING 2000–2008/09\*\*



	BASE YEAR		CURRENT YEAR		RANK <sup>1</sup>	MI RATE	PERCENT CHANGE IN RATE	
	NUMBER	RATE	NUMBER	RATE			WORSE	BETTER
<b>Economic Security**</b>	<u>2005</u>		<u>2009</u>					
Children in poverty								
• ages 0–17	4,568	12.2%	4,976	14.0%	6	22.2%	15	8
• ages 5–17	3,244	11.3%	3,292	12.2%	8	20.2%	8	
	<u>2006</u>		<u>2010</u>					
Students receiving free/reduced price school lunches <sup>2</sup>	6,342	24.7%	8,510	36.4%	7	46.5%	47	
<b>Child Health</b>	<u>1998–2000</u>		<u>2007–2009</u>					
Less than adequate prenatal care (2008–09)‡	—	—	538	31.9%	44	29.5%		
Low-birthweight babies	109	6.2%	108	6.4%	15 of 81	8.5%	3	
Infant mortality (per 1,000)	7	4.0	10	6.1	16 of 49	7.6	53	
Child deaths, ages 1–14 (per 100,000)	4	11.8	3	9.8	1 of 34	17.4		17
<b>Adolescence</b>								
Births to teens, ages 15–19 (per 1,000)	195	37.9	164	30.4	32	33.3		20
Teen deaths (per 100,000)	5	43.1	6	56.6	23 of 39	55.6	31	
	<u>2007</u>		<u>2010</u>					
High school dropouts**	328	15.2%	189	9.7%	54 of 80	11.1%		36
<b>Abuse/Neglect (per 1,000)</b>	<u>FY2000</u>		<u>FY2010</u>					
Children in investigated families	1,738	43.5	1,573	43.6	6	70.1		0
Confirmed victims	260	6.5	272	7.5	7	13.8	16	
Children in out-of-home care	113	2.8	83	2.3	5 of 76	5.1		19
<b>Education (not proficient in math)</b>	<u>2003</u>		<u>2010</u>					
Fourth grade (MEAP)	628	35.1%	136	8.2%	51	8.5%		77
Eighth grade (MEAP)	873	44.2%	340	19.4%	36	22.0%		56
	<u>2008</u>		<u>2010</u>					
High school students (MME)	1,095	58.0%	915	50.8%	49	49.6%		12



<sup>1</sup> A ranking of 1 means a county has the “best” rate compared to other counties in the state. Unless noted, the ranking is based on 82–83 counties.  
<sup>2</sup> Family income for eligible students is below 185 percent poverty level.  
<sup>\*</sup> Sometimes a rate could not be calculated because of low incidence of events or unavailable data.  
<sup>\*\*</sup> Due to changes in the data measures, comparisons between 2000 and the current year could not be made for some indicators.  
<sup>‡</sup> Due to Michigan’s revised birth certificate, 2008–09 data cannot be compared with those of previous years.  
MME – Michigan Merit Exam instead of the MEAP.  
Beginning in 2007 Michigan high school students have taken the ACT college entrance exam.

Missing bars indicate no change or a rate could not be calculated; a “0” reflects no change. Percentage change is calculated with unrounded rates.