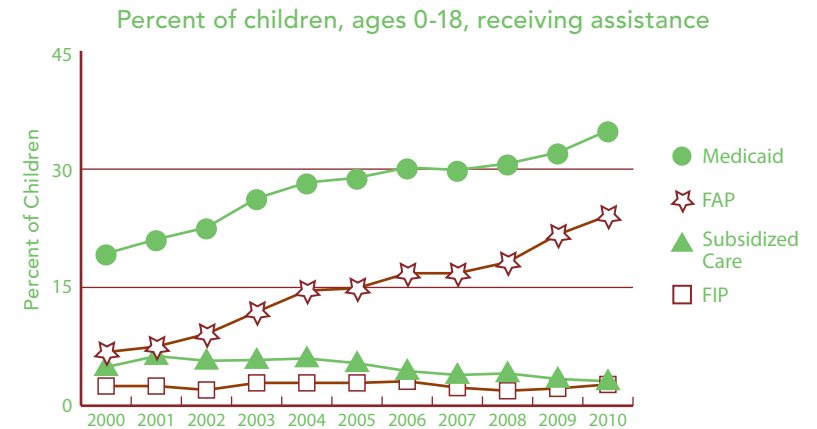


MARQUETTE

BACKGROUND INFORMATION (ALL DATA ARE FOR 2010 UNLESS OTHERWISE NOTED.)



| | NUMBER | RATE | MI |
|---|--------|-------|-------|
| FAMILY SUPPORT PROGRAMS | | | |
| Children receiving... | | | |
| • subsidized child care, ages 0–12 ¹ | 262 | 3.1% | 3.4% |
| • FIP cash assistance ^{1,3} | 359 | 2.7% | 6.2% |
| • Food Assistance Program ^{1,4} | 3,185 | 24.1% | 30.4% |
| Children with support owed | | | |
| • receiving none (% of those owed) | 240 | 9.9% | 29.5% |
| • receiving less than 70% of amount | 962 | 39.8% | 62.6% |



Source: Michigan Department of Human Services and Michigan Department of Community Health, Vital Records and Health Data Development Section.

| | 2000 | 2010 | % CHANGE |
|------------------------------|-------|-------|----------|
| POPULATION | | | |
| Child population 0–17 | | | |
| • Ages 0-4 | 3,259 | 3,491 | 7.1% |
| • Ages 5-9 | 3,630 | 3,293 | -9.3% |
| • Ages 10-14 | 4,074 | 3,472 | -14.8% |
| • Ages 15-19 | 5,574 | 5,140 | -7.8% |

| | NUMBER | RATE | MI |
|---|--------|-------|-------|
| ACCESS TO HEALTH CARE | | | |
| Children insured | 12,339 | 95.4% | 94.9% |
| Children, ages 0–18 insured by... | | | |
| • Medicaid ¹ | 4,606 | 34.9% | 40.7% |
| • MICHild | 156 | 1.2% | 1.2% |
| Fully immunized toddlers, ages 19–35 months (for the series 4:3:1:3:3:1) ¹ | 766 | 74.4% | 70.0% |
| Lead poisoning in children, ages 1–2 | | | |
| • tested | 557 | 42.9% | 36.2% |
| • poisoned (% of tested) | 0 | * | 0.8% |
| Children, ages 1–14, hospitalized for asthma (rate per 10,000) ² | 9 | 9.9 | 20.8 |
| CHILDREN WITH SPECIAL NEEDS | | | |
| Babies with a birth defect** | 22 | 3.4% | 6.6% |
| Students in Special Education ¹ | 1,423 | 17.2% | 14.4% |
| Children receiving Supplemental Security Income (rate per 1,000) ¹ | 155 | 13.0 | 19.2 |

¹ As of December 2010.

² Annual rate and number are based on the three-year period 2007–2009 and only for counties with a total number over 20.

³ Family Independence Program.

⁴ State name for the federal Supplemental Nutrition Assistance Program, formerly called "food stamps."

Note: Percentages reflect percent of population unless otherwise noted.

* Sometimes a rate could not be calculated because of low incidence of events or unavailable data.

** Based on three year period 2006-2008.

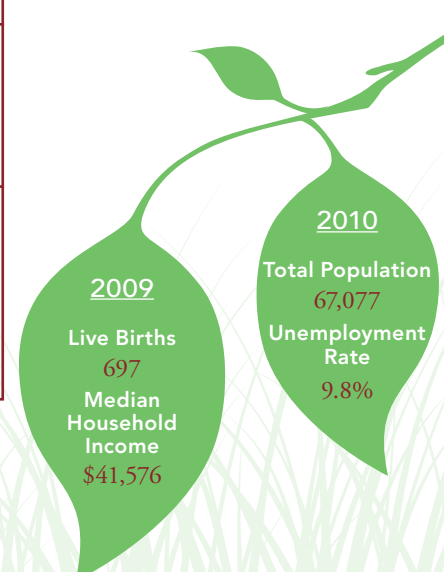
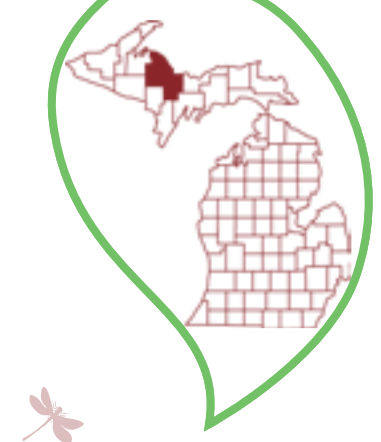
N/A not available.

See Data Notes and Definitions for details.

TRENDS IN CHILD WELL-BEING 2000–2008/09**



| | BASE YEAR | | CURRENT YEAR | | RANK ¹ | MI RATE | PERCENT CHANGE IN RATE | |
|---|------------------|-------|------------------|-------|-------------------|---------|------------------------|--------|
| | NUMBER | RATE | NUMBER | RATE | | | WORSE | BETTER |
| Economic Security** | <u>2005</u> | | <u>2009</u> | | | | | |
| Children in poverty | | | | | | | | |
| • ages 0–17 | 1,813 | 15.0% | 1,756 | 15.0% | 13 | 22.2% | | 0 |
| • ages 5–17 | 1,159 | 12.9% | 1,169 | 13.8% | 14 | 20.2% | 7 | |
| | <u>2006</u> | | <u>2010</u> | | | | | |
| Students receiving free/reduced price school lunches ² | 2,817 | 31.8% | 3,116 | 37.7% | 11 | 46.5% | 19 | |
| Child Health | <u>1998–2000</u> | | <u>2007–2009</u> | | | | | |
| Less than adequate prenatal care (2008–09)‡ | — | — | 169 | 25.2% | 24 | 29.5% | | |
| Low-birthweight babies | 25 | 4.2% | 48 | 7.0% | 35 of 81 | 8.5% | 64 | |
| Infant mortality (per 1,000) | 4 | 7.4 | 3 | 4.4 | 7 of 49 | 7.6 | | 40 |
| Child deaths, ages 1–14 (per 100,000) | 1 | * | 1 | * | * of 34 | 17.4 | | |
| Adolescence | | | | | | | | |
| Births to teens, ages 15–19 (per 1,000) | 51 | 18.8 | 42 | 15.6 | 4 | 33.3 | | 17 |
| Teen deaths (per 100,000) | 1 | * | 3 | 56.8 | 24 of 39 | 55.6 | | |
| | <u>2007</u> | | <u>2010</u> | | | | | |
| High school dropouts** | 45 | 5.6% | 41 | 5.5% | 12 of 80 | 11.1% | | 1 |
| Abuse/Neglect (per 1,000) | <u>FY2000</u> | | <u>FY2010</u> | | | | | |
| Children in investigated families | 807 | 58.4 | 854 | 71.6 | 24 | 70.1 | 23 | |
| Confirmed victims | 91 | 6.6 | 192 | 16.1 | 41 | 13.8 | 144 | |
| Children in out-of-home care | 64 | 4.6 | 54 | 4.5 | 30 of 76 | 5.1 | | 2 |
| Education (not proficient in math) | <u>2003</u> | | <u>2010</u> | | | | | |
| Fourth grade (MEAP) | 125 | 20.9% | 29 | 4.7% | 10 | 8.5% | | 77 |
| Eighth grade (MEAP) | 239 | 33.7% | 125 | 20.2% | 43 | 22.0% | | 40 |
| | <u>2008</u> | | <u>2010</u> | | | | | |
| High school students (MME) | 290 | 44.2% | 264 | 41.3% | 11 | 49.6% | | 7 |



¹ A ranking of 1 means a county has the “best” rate compared to other counties in the state. Unless noted, the ranking is based on 82–83 counties.

² Family income for eligible students is below 185 percent poverty level.

* Sometimes a rate could not be calculated because of low incidence of events or unavailable data.

** Due to changes in the data measures, comparisons between 2000 and the current year could not be made for some indicators.

‡ Due to Michigan’s revised birth certificate, 2008–09 data cannot be compared with those of previous years.

MME – Michigan Merit Exam instead of the MEAP.

Beginning in 2007 Michigan high school students have taken the ACT college entrance exam.

Missing bars indicate no change or a rate could not be calculated; a “0” reflects no change.

Percentage change is calculated with unrounded rates.