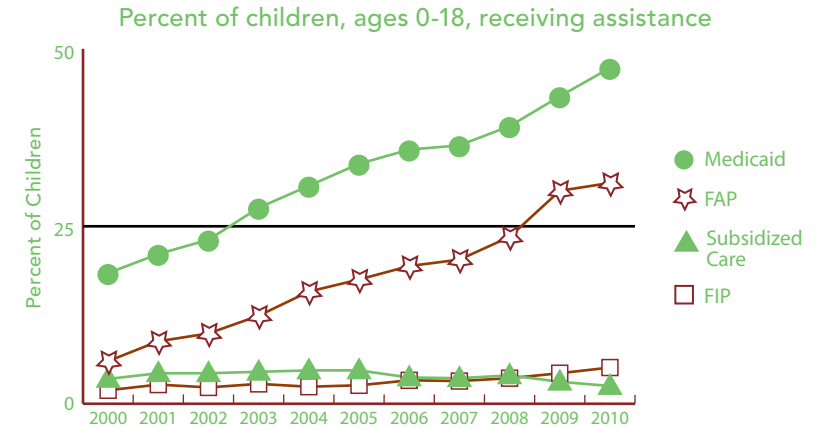


HILLSDDALE

BACKGROUND INFORMATION (ALL DATA ARE FOR 2010 UNLESS OTHERWISE NOTED.)



| | NUMBER | RATE | MI |
|---|--------|-------|-------|
| FAMILY SUPPORT PROGRAMS | | | |
| Children receiving... | | | |
| • subsidized child care, ages 0–12 ¹ | 186 | 2.5% | 3.4% |
| • FIP cash assistance ^{1,3} | 586 | 5.1% | 6.2% |
| • Food Assistance Program ^{1,4} | 3,546 | 31.1% | 30.4% |
| Children with support owed | | | |
| • receiving none (% of those owed) | 335 | 13.4% | 29.5% |
| • receiving less than 70% of amount | 1,196 | 48.0% | 62.6% |



Source: Michigan Department of Human Services and Michigan Department of Community Health, Vital Records and Health Data Development Section.

| | 2000 | 2010 | % CHANGE |
|------------------------------|-------|-------|----------|
| POPULATION | | | |
| Child population 0–17 | | | |
| • Ages 0–4 | 3,006 | 2,807 | -6.6% |
| • Ages 5–9 | 3,229 | 3,030 | -6.2% |
| • Ages 10–14 | 3,750 | 3,179 | -15.2% |
| • Ages 15–19 | 3,868 | 3,593 | -7.1% |

| | NUMBER | RATE | MI |
|---|--------|-------|-------|
| ACCESS TO HEALTH CARE | | | |
| Children insured | 10,512 | 93.9% | 94.9% |
| Children, ages 0–18 insured by... | | | |
| • Medicaid ¹ | 5,379 | 47.3% | 40.7% |
| • MICHild | 180 | 1.6% | 1.2% |
| Fully immunized toddlers, ages 19–35 months (for the series 4:3:1:3:3:1) ¹ | 633 | 82.6% | 70.0% |
| Lead poisoning in children, ages 1–2 | | | |
| • tested | 314 | 28.2% | 36.2% |
| • poisoned (% of tested) | 6 | 1.9% | 0.8% |
| Children, ages 1–14, hospitalized for asthma (rate per 10,000) ² | 12 | 14.5 | 20.8 |
| CHILDREN WITH SPECIAL NEEDS | | | |
| Babies with a birth defect** | 26 | 4.6% | 6.6% |
| Students in Special Education ¹ | 1,208 | 17.3% | 14.4% |
| Children receiving Supplemental Security Income (rate per 1,000) ¹ | 265 | 24.8 | 19.2 |

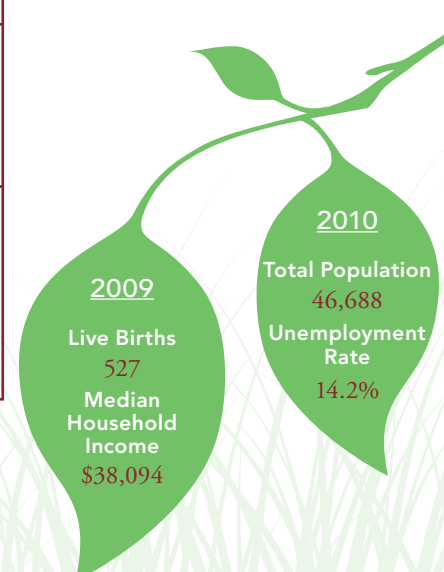
1 As of December 2010.
 2 Annual rate and number are based on the three-year period 2007–2009 and only for counties with a total number over 20.
 3 Family Independence Program.
 4 State name for the federal Supplemental Nutrition Assistance Program, formerly called "food stamps."

Note: Percentages reflect percent of population unless otherwise noted.
 * Sometimes a rate could not be calculated because of low incidence of events or unavailable data.
 ** Based on three year period 2006–2008.
 N/A not available.
 See Data Notes and Definitions for details.

TRENDS IN CHILD WELL-BEING 2000–2008/09**



| | BASE YEAR | | CURRENT YEAR | | RANK ¹ | MI RATE | PERCENT CHANGE IN RATE | |
|---|------------------|-------|------------------|-------|-------------------|---------|------------------------|--------|
| | NUMBER | RATE | NUMBER | RATE | | | WORSE | BETTER |
| Economic Security** | <u>2005</u> | | <u>2009</u> | | | | | |
| Children in poverty | | | | | | | | |
| • ages 0–17 | 2,288 | 20.7% | 2,763 | 26.5% | 59 | 22.2% | 28 | |
| • ages 5–17 | 1,462 | 17.9% | 1,802 | 23.8% | 61 | 20.2% | 33 | |
| | <u>2006</u> | | <u>2010</u> | | | | | |
| Students receiving free/reduced price school lunches ² | 2,966 | 39.8% | 3,713 | 53.1% | 51 | 46.5% | 33 | |
| Child Health | <u>1998–2000</u> | | <u>2007–2009</u> | | | | | |
| Less than adequate prenatal care (2008–09)‡ | — | — | 175 | 32.1% | 46 | 29.5% | | |
| Low-birthweight babies | 46 | 7.5% | 37 | 6.6% | 22 of 81 | 8.5% | 11 | |
| Infant mortality (per 1,000) | 5 | 8.7 | 3 | 6.0 | 15 of 49 | 7.6 | 31 | |
| Child deaths, ages 1–14 (per 100,000) | 4 | 46.1 | 2 | * | * of 34 | 17.4 | | |
| Adolescence | | | | | | | | |
| Births to teens, ages 15–19 (per 1,000) | 81 | 45.6 | 56 | 32.6 | 38 | 33.3 | 29 | |
| Teen deaths (per 100,000) | 2 | * | 1 | * | * of 39 | 55.6 | | |
| | <u>2007</u> | | <u>2010</u> | | | | | |
| High school dropouts** | 79 | 13.3% | 95 | 15.4% | 78 of 80 | 11.1% | 16 | |
| Abuse/Neglect (per 1,000) | <u>FY2000</u> | | <u>FY2010</u> | | | | | |
| Children in investigated families | 1,551 | 126.7 | 1,396 | 130.9 | 78 | 70.1 | 3 | |
| Confirmed victims | 227 | 18.5 | 349 | 32.7 | 76 | 13.8 | 76 | |
| Children in out-of-home care | 80 | 6.5 | 48 | 4.5 | 30 of 76 | 5.1 | 31 | |
| Education (not proficient in math) | <u>2003</u> | | <u>2010</u> | | | | | |
| Fourth grade (MEAP) | 190 | 37.4% | 36 | 7.8% | 47 | 8.5% | 79 | |
| Eighth grade (MEAP) | 317 | 54.1% | 159 | 32.4% | 77 | 22.0% | 40 | |
| | <u>2008</u> | | <u>2010</u> | | | | | |
| High school students (MME) | 298 | 61.7% | 259 | 56.3% | 66 | 49.6% | 9 | |



¹ A ranking of 1 means a county has the “best” rate compared to other counties in the state. Unless noted, the ranking is based on 82–83 counties.

² Family income for eligible students is below 185 percent poverty level.

* Sometimes a rate could not be calculated because of low incidence of events or unavailable data.

** Due to changes in the data measures, comparisons between 2000 and the current year could not be made for some indicators.

‡ Due to Michigan’s revised birth certificate, 2008–09 data cannot be compared with those of previous years.

MME – Michigan Merit Exam instead of the MEAP.

Beginning in 2007 Michigan high school students have taken the ACT college entrance exam.

Missing bars indicate no change or a rate could not be calculated; a “0” reflects no change.

Percentage change is calculated with unrounded rates.