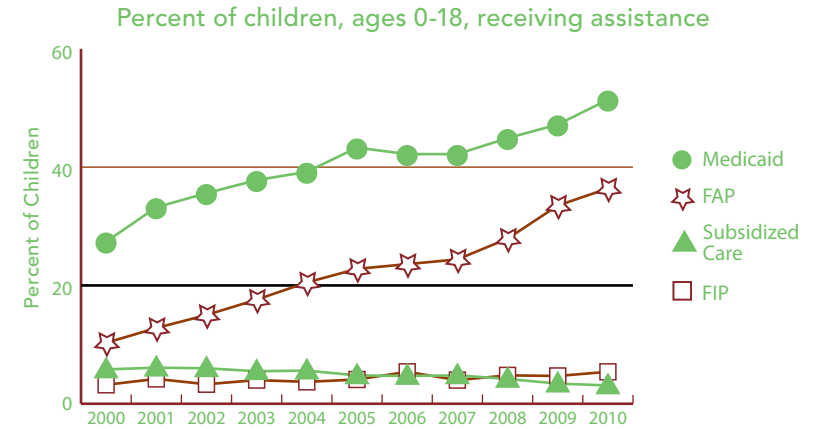


GLADWIN

BACKGROUND INFORMATION (ALL DATA ARE FOR 2010 UNLESS OTHERWISE NOTED.)



	NUMBER	RATE	MI
FAMILY SUPPORT PROGRAMS			
Children receiving...			
• subsidized child care, ages 0–12 ¹	110	3.1%	3.4%
• FIP cash assistance ^{1,3}	292	5.4%	6.2%
• Food Assistance Program ^{1,4}	1,983	36.4%	30.4%
Children with support owed			
• receiving none (% of those owed)	1,095	19.2%	20.7%
• receiving less than 70% of amount	626	57.2%	62.6%



Source: Michigan Department of Human Services and Michigan Department of Community Health, Vital Records and Health Data Development Section.



	2000	2010	% CHANGE
POPULATION			
Child population 0–17			
• Ages 0–4	1,432	1,265	-11.7%
• Ages 5–9	1,624	1,342	-17.4%
• Ages 10–14	1,868	1,562	-16.4%
• Ages 15–19	1,692	1,592	-5.9%

	NUMBER	RATE	MI
ACCESS TO HEALTH CARE			
Children insured	5,036	93.8%	94.9%
Children, ages 0–18 insured by...			
• Medicaid ¹	2,802	51.4%	40.7%
• MICHild	100	1.8%	1.2%
Fully immunized toddlers, ages 19–35 months (for the series 4:3:1:3:3:1) ¹	238	72.6%	70.0%
Lead poisoning in children, ages 1–2			
• tested	194	38.6%	36.2%
• poisoned (% of tested)	0	*	0.8%
Children, ages 1–14, hospitalized for asthma (rate per 10,000) ²	3	*	20.8
CHILDREN WITH SPECIAL NEEDS			
Babies with a birth defect**	16	6.3%	6.6%
Students in Special Education ¹	590	17.7%	14.4%
Children receiving Supplemental Security Income (rate per 1,000) ¹	122	23.7	19.2

¹ As of December 2010.

² Annual rate and number are based on the three-year period 2007–2009 and only for counties with a total number over 20.

³ Family Independence Program.

⁴ State name for the federal Supplemental Nutrition Assistance Program, formerly called "food stamps."

Note: Percentages reflect percent of population unless otherwise noted.

* Sometimes a rate could not be calculated because of low incidence of events or unavailable data.

** Based on three year period 2006–2008.

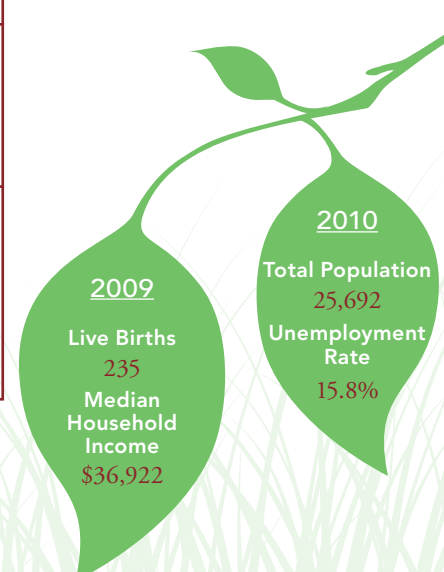
N/A not available.

See Data Notes and Definitions for details.

TRENDS IN CHILD WELL-BEING 2000–2008/09**



	BASE YEAR		CURRENT YEAR		RANK ¹	MI RATE	PERCENT CHANGE IN RATE	
	NUMBER	RATE	NUMBER	RATE			WORSE	BETTER
Economic Security**	<u>2005</u>		<u>2009</u>					
Children in poverty								
• ages 0–17	1,676	29.6%	1,653	32.6%	74	22.2%	10	
• ages 5–17	1,118	26.0%	1,072	28.2%	74	20.2%	9	
	<u>2006</u>		<u>2010</u>					
Students receiving free/reduced price school lunches ²	1,774	49.4%	1,896	57.0%	61	46.5%	15	
Child Health	<u>1998–2000</u>		<u>2007–2009</u>					
Less than adequate prenatal care (2008–09)‡	—	—	88	37.3%	66	29.5%		
Low-birthweight babies	23	7.9%	21	8.5%	64 of 81	8.5%	9	
Infant mortality (per 1,000)	3	10.3	1	*	* of 49	7.6		
Child deaths, ages 1–14 (per 100,000)	1	*	1	*	* of 34	17.4		
Adolescence								
Births to teens, ages 15–19 (per 1,000)	33	42.6	27	35.7	48	33.3		16
Teen deaths (per 100,000)	2	120.1	1	*	* of 39	55.6		
	<u>2007</u>		<u>2010</u>					
High school dropouts**	41	12.7%	16	5.9%	15 of 80	11.1%		54
Abuse/Neglect (per 1,000)	<u>FY2000</u>		<u>FY2010</u>					
Children in investigated families	552	91.3	349	67.8	21	70.1		26
Confirmed victims	72	11.9	59	11.5	20	13.8		4
Children in out-of-home care	10	1.7	10	1.9	4 of 76	5.1	18	
Education (not proficient in math)	<u>2003</u>		<u>2010</u>					
Fourth grade (MEAP)	134	47.8%	25	11.0%	73	8.5%		77
Eighth grade (MEAP)	178	55.8%	60	23.3%	61	22.0%		58
	<u>2008</u>		<u>2010</u>					
High school students (MME)	191	71.0%	155	55.0%	63	49.6%		23



¹ A ranking of 1 means a county has the “best” rate compared to other counties in the state. Unless noted, the ranking is based on 82–83 counties.
² Family income for eligible students is below 185 percent poverty level.
 * Sometimes a rate could not be calculated because of low incidence of events or unavailable data.
 ** Due to changes in the data measures, comparisons between 2000 and the current year could not be made for some indicators.
 ‡ Due to Michigan’s revised birth certificate, 2008–09 data cannot be compared with those of previous years.
 MME – Michigan Merit Exam instead of the MEAP.
 Beginning in 2007 Michigan high school students have taken the ACT college entrance exam.

Missing bars indicate no change or a rate could not be calculated; a “0” reflects no change. Percentage change is calculated with unrounded rates.