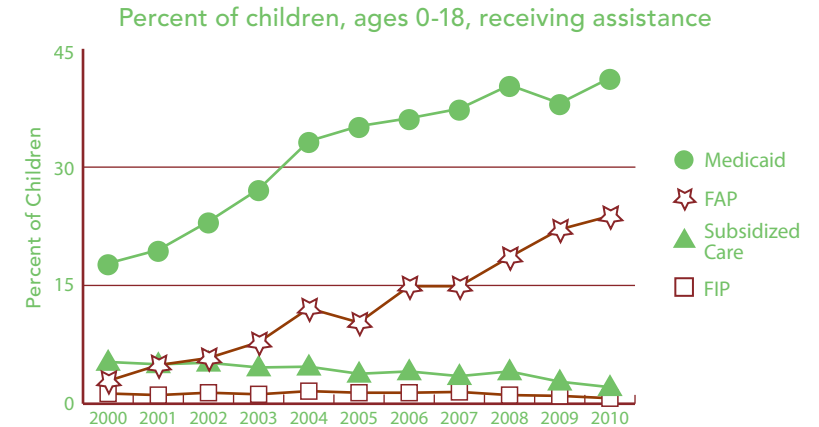


BACKGROUND INFORMATION (ALL DATA ARE FOR 2010 UNLESS OTHERWISE NOTED.)



	NUMBER	RATE	MI
FAMILY SUPPORT PROGRAMS			
Children receiving...			
• subsidized child care, ages 0–12 ¹	106	2.1%	3.4%
• FIP cash assistance ^{1,3}	56	0.7%	6.2%
• Food Assistance Program ^{1,4}	1,828	23.8%	30.4%
Children with support owed			
• receiving none (% of those owed)	157	10.5%	29.5%
• receiving less than 70% of amount	689	46.2%	62.6%



Source: Michigan Department of Human Services and Michigan Department of Community Health, Vital Records and Health Data Development Section.



	2000	2010	% CHANGE
POPULATION			
Child population			
0–17	7,985	7,389	-7.5%
• Ages 0–4	1,946	1,705	-12.4%
• Ages 5–9	2,156	2,033	-5.7%
• Ages 10–14	2,400	2,222	-7.4%
• Ages 15–19	2,201	2,191	-0.5%

	NUMBER	RATE	MI
ACCESS TO HEALTH CARE			
Children insured	7,080	93.8%	94.9%
Children, ages 0–18 insured by...			
• Medicaid ¹	3,173	41.3%	40.7%
• MICHild	169	2.2%	1.2%
Fully immunized toddlers, ages 19–35 months (for the series 4:3:1:3:3:1) ¹	373	72.3%	70.0%
Lead poisoning in children, ages 1–2			
• tested	180	25.6%	36.2%
• poisoned (% of tested)	0	*	0.8%
Children, ages 1–14, hospitalized for asthma (rate per 10,000) ²	5	*	20.8
CHILDREN WITH SPECIAL NEEDS			
Babies with a birth defect**	18	5.1%	6.6%
Students in Special Education ¹	578	11.3%	14.4%
Children receiving Supplemental Security Income (rate per 1,000) ¹	101	13.9	19.2

¹ As of December 2010.

² Annual rate and number are based on the three-year period 2007–2009 and only for counties with a total number over 20.

³ Family Independence Program.

⁴ State name for the federal Supplemental Nutrition Assistance Program, formerly called "food stamps."

Note: Percentages reflect percent of population unless otherwise noted.

* Sometimes a rate could not be calculated because of low incidence of events or unavailable data.

** Based on three year period 2006–2008.

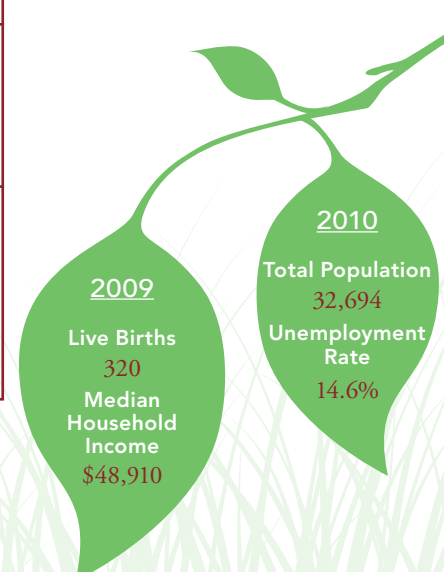
N/A not available.

See Data Notes and Definitions for details.

TRENDS IN CHILD WELL-BEING 2000–2008/09**



	BASE YEAR		CURRENT YEAR		RANK ¹	MI RATE	PERCENT CHANGE IN RATE	
	NUMBER	RATE	NUMBER	RATE			WORSE	BETTER
Economic Security**	<u>2005</u>		<u>2009</u>					
Children in poverty								
• ages 0–17	977	12.7%	1,247	17.4%	17	22.2%	37	
• ages 5–17	651	11.4%	822	15.2%	18	20.2%	33	
	<u>2006</u>		<u>2010</u>					
Students receiving free/reduced price school lunches ²	1,610	29.3%	2,087	40.8%	16	46.5%	39	
Child Health	<u>1998–2000</u>		<u>2007–2009</u>					
Less than adequate prenatal care (2008–09)‡	—	—	62	19.0%	3	29.5%		
Low-birthweight babies	23	6.1%	22	6.5%	18 of 81	8.5%	6	
Infant mortality (per 1,000)	2	6.1	1	*	* of 49	7.6		
Child deaths, ages 1–14 (per 100,000)	1	*	0	*	* of 34	17.4		
Adolescence								
Births to teens, ages 15–19 (per 1,000)	38	36.9	25	22.9	19	33.3		38
Teen deaths (per 100,000)	2	109.3	1	*	* of 39	55.6		
	<u>2007</u>		<u>2010</u>					
High school dropouts**	40	8.9%	27	5.9%	15 of 80	11.1%		33
Abuse/Neglect (per 1,000)	<u>FY2000</u>		<u>FY2010</u>					
Children in investigated families	444	55.7	628	86.4	38	70.1	55	
Confirmed victims	89	11.2	108	14.9	34	13.8	33	
Children in out-of-home care	17	2.1	32	4.4	28	5.1	106	
Education (not proficient in math)	<u>2003</u>		<u>2010</u>					
Fourth grade (MEAP)	91	24.6%	19	5.3%	17	8.5%		79
Eighth grade (MEAP)	166	39.1%	36	9.4%	2	22.0%		76
	<u>2008</u>		<u>2010</u>					
High school students (MME)	172	41.8%	149	39.6%	9	49.6%		5



¹ A ranking of 1 means a county has the “best” rate compared to other counties in the state. Unless noted, the ranking is based on 82–83 counties.
² Family income for eligible students is below 185 percent poverty level.
 * Sometimes a rate could not be calculated because of low incidence of events or unavailable data.
 ** Due to changes in the data measures, comparisons between 2000 and the current year could not be made for some indicators.
 ‡ Due to Michigan’s revised birth certificate, 2008–09 data cannot be compared with those of previous years.
 MME – Michigan Merit Exam instead of the MEAP.
 Beginning in 2007 Michigan high school students have taken the ACT college entrance exam.

Missing bars indicate no change or a rate could not be calculated; a “0” reflects no change. Percentage change is calculated with unrounded rates.