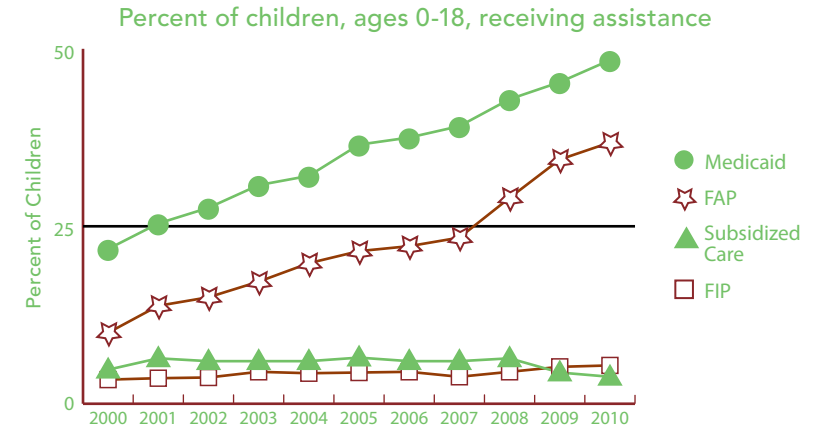


BACKGROUND INFORMATION (ALL DATA ARE FOR 2010 UNLESS OTHERWISE NOTED.)



	NUMBER	RATE	MI
<b>FAMILY SUPPORT PROGRAMS</b>			
<b>Children receiving...</b>			
• subsidized child care, ages 0–12 <sup>1</sup>	283	3.8%	3.4%
• FIP cash assistance <sup>1,3</sup>	646	5.4%	6.2%
• Food Assistance Program <sup>1,4</sup>	4,372	36.8%	30.4%
<b>Children with support owed</b>			
• receiving none (% of those owed)	726	22.1%	29.5%
• receiving less than 70% of amount	1,947	59.3%	62.6%



Source: Michigan Department of Human Services and Michigan Department of Community Health, Vital Records and Health Data Development Section.



	2000	2010	% CHANGE
<b>POPULATION</b>			
<b>Child population</b>			
0–17	13,029	12,258	-5.9%
• Ages 0-4	3,095	3,008	-2.8%
• Ages 5-9	3,589	3,333	-7.1%
• Ages 10-14	3,967	3,642	-8.2%
• Ages 15-19	3,695	3,650	-1.2%

	NUMBER	RATE	MI
<b>ACCESS TO HEALTH CARE</b>			
Children insured	10,944	93.9%	94.9%
Children, ages 0–18 insured by...			
• Medicaid <sup>1</sup>	5,743	48.4%	40.7%
• MICHild	164	1.4%	1.2%
Fully immunized toddlers, ages 19–35 months (for the series 4:3:1:3:3:1) <sup>1</sup>	434	65.2%	70.0%
Lead poisoning in children, ages 1–2			
• tested	452	42.9%	36.2%
• poisoned (% of tested)	3	*	0.8%
Children, ages 1–14, hospitalized for asthma (rate per 10,000) <sup>2</sup>	7	9.0	20.8
<b>CHILDREN WITH SPECIAL NEEDS</b>			
Babies with a birth defect**	23	4.3%	6.6%
Students in Special Education <sup>1</sup>	941	13.1%	14.4%
Children receiving Supplemental Security Income (rate per 1,000) <sup>1</sup>	190	16.9	19.2

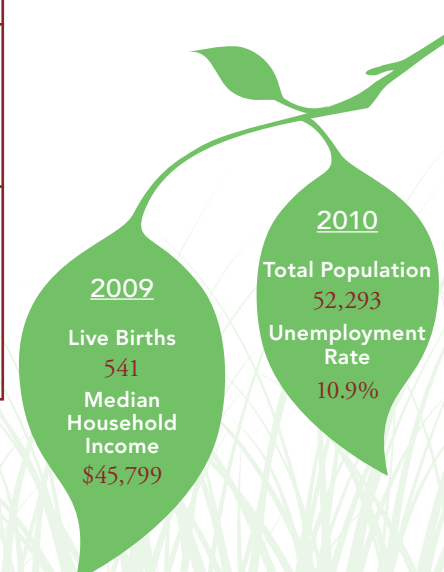
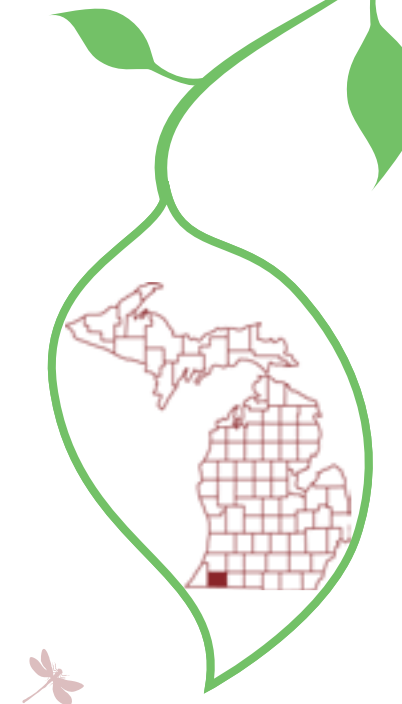
1 As of December 2010.  
 2 Annual rate and number are based on the three-year period 2007–2009 and only for counties with a total number over 20.  
 3 Family Independence Program.  
 4 State name for the federal Supplemental Nutrition Assistance Program, formerly called “food stamps.”

Note: Percentages reflect percent of population unless otherwise noted.  
 \* Sometimes a rate could not be calculated because of low incidence of events or unavailable data.  
 \*\* Based on three year period 2006-2008.  
 N/A not available.  
 See Data Notes and Definitions for details.

TRENDS IN CHILD WELL-BEING 2000–2008/09\*\*



	BASE YEAR		CURRENT YEAR		RANK <sup>1</sup>	MI RATE	PERCENT CHANGE IN RATE	
	NUMBER	RATE	NUMBER	RATE			WORSE	BETTER
<b>Economic Security**</b>	<u>2005</u>		<u>2009</u>					
Children in poverty								
• ages 0–17	2,131	18.2%	2,334	21.5%	32	22.2%	18	
• ages 5–17	1,448	16.2%	1,535	18.6%	29	20.2%	15	
	<u>2006</u>		<u>2010</u>					
Students receiving free/reduced price school lunches <sup>2</sup>	3,119	40.7%	3,766	52.3%	45	46.5%	28	
<b>Child Health</b>	<u>1998–2000</u>		<u>2007–2009</u>					
Less than adequate prenatal care (2008–09)‡	—	—	220	42.2%	77	29.5%		
Low-birthweight babies	41	7.4%	40	7.6%	47 of 81	8.5%	3	
Infant mortality (per 1,000)	3	5.4	4	7.6	34 of 49	7.6	41	
Child deaths, ages 1–14 (per 100,000)	4	36.1	2	23.5	26 of 34	17.4		35
<b>Adolescence</b>								
Births to teens, ages 15–19 (per 1,000)	81	46.2	74	44.3	65	33.3		4
Teen deaths (per 100,000)	3	72.9	2	66.9	30 of 39	55.6		8
	<u>2007</u>		<u>2010</u>					
High school dropouts**	80	13.7%	45	7.3%	31 of 80	11.1%		46
<b>Abuse/Neglect (per 1,000)</b>	<u>FY2000</u>		<u>FY2010</u>					
Children in investigated families	989	75.8	901	80.3	32	70.1	6	
Confirmed victims	248	19.0	143	12.7	25	13.8		33
Children in out-of-home care	106	8.1	93	8.3	69 of 76	5.1	2	
<b>Education (not proficient in math)</b>	<u>2003</u>		<u>2010</u>					
Fourth grade (MEAP)	137	30.4%	27	4.9%	13	8.5%		84
Eighth grade (MEAP)	206	40.0%	98	19.4%	35	22.0%		52
	<u>2008</u>		<u>2010</u>					
High school students (MME)	270	57.4%	215	48.2%	38	49.6%		16



<sup>1</sup> A ranking of 1 means a county has the “best” rate compared to other counties in the state. Unless noted, the ranking is based on 82–83 counties.  
<sup>2</sup> Family income for eligible students is below 185 percent poverty level.  
 \* Sometimes a rate could not be calculated because of low incidence of events or unavailable data.  
 \*\* Due to changes in the data measures, comparisons between 2000 and the current year could not be made for some indicators.  
 ‡ Due to Michigan’s revised birth certificate, 2008–09 data cannot be compared with those of previous years.  
 MME – Michigan Merit Exam instead of the MEAP.  
 Beginning in 2007 Michigan high school students have taken the ACT college entrance exam.

Missing bars indicate no change or a rate could not be calculated; a “0” reflects no change. Percentage change is calculated with unrounded rates.