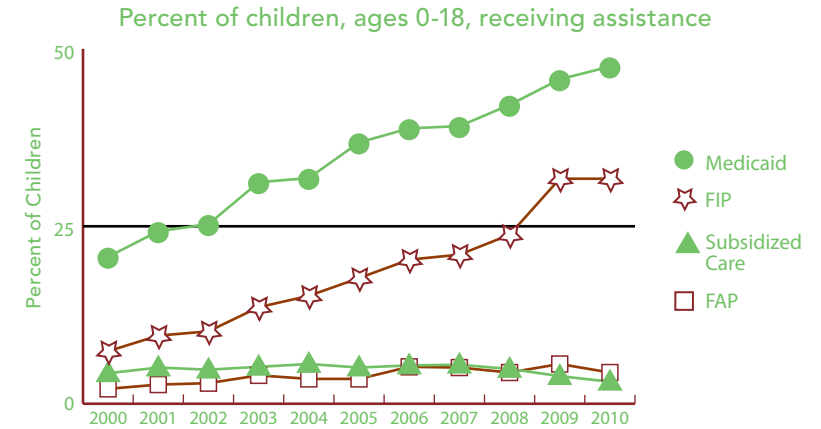


BACKGROUND INFORMATION (ALL DATA ARE FOR 2010 UNLESS OTHERWISE NOTED.)



| | NUMBER | RATE | MI |
|---|--------|-------|-------|
| FAMILY SUPPORT PROGRAMS | | | |
| Children receiving... | | | |
| • subsidized child care, ages 0–12 ¹ | 230 | 3.1% | 3.4% |
| • FIP cash assistance ^{1,3} | 496 | 4.4% | 6.2% |
| • Food Assistance Program ^{1,4} | 3,553 | 31.7% | 30.4% |
| Children with support owed | | | |
| • receiving none (% of those owed) | 508 | 20.2% | 29.5% |
| • receiving less than 70% of amount | 1,505 | 59.7% | 62.6% |



Source: Michigan Department of Human Services and Michigan Department of Community Health, Vital Records and Health Data Development Section.



| | 2000 | 2010 | % CHANGE |
|------------------------------|-------|-------|----------|
| POPULATION | | | |
| Child population 0–17 | | | |
| • Ages 0–4 | 2,883 | 2,968 | 2.9% |
| • Ages 5–9 | 3,212 | 2,976 | -7.3% |
| • Ages 10–14 | 3,494 | 2,983 | -14.6% |
| • Ages 15–19 | 3,353 | 3,028 | -9.7% |

| | NUMBER | RATE | MI |
|---|--------|-------|-------|
| ACCESS TO HEALTH CARE | | | |
| Children insured | 10,308 | 93.5% | 94.9% |
| Children, ages 0–18 insured by... | | | |
| • Medicaid ¹ | 5,316 | 47.5% | 40.7% |
| • MICHild | 144 | 1.3% | 1.2% |
| Fully immunized toddlers, ages 19–35 months (for the series 4:3:1:3:3:1) ¹ | 645 | 76.5% | 70.0% |
| Lead poisoning in children, ages 1–2 | | | |
| • tested | 409 | 34.9% | 36.2% |
| • poisoned (% of tested) | 0 | * | 0.8% |
| Children, ages 1–14, hospitalized for asthma (rate per 10,000) ² | 18 | 22.2 | 20.8 |
| CHILDREN WITH SPECIAL NEEDS | | | |
| Babies with a birth defect** | 34 | 5.7% | 6.6% |
| Students in Special Education ¹ | 1,076 | 17.9% | 14.4% |
| Children receiving Supplemental Security Income (rate per 1,000) ¹ | 144 | 13.6 | 19.2 |

¹ As of December 2010.

² Annual rate and number are based on the three-year period 2007–2009 and only for counties with a total number over 20.

³ Family Independence Program.

⁴ State name for the federal Supplemental Nutrition Assistance Program, formerly called "food stamps."

Note: Percentages reflect percent of population unless otherwise noted.

* Sometimes a rate could not be calculated because of low incidence of events or unavailable data.

** Based on three year period 2006–2008.

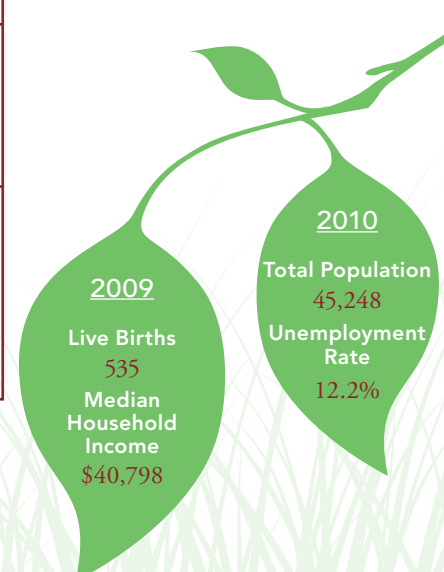
N/A not available.

See Data Notes and Definitions for details.

TRENDS IN CHILD WELL-BEING 2000–2008/09**



| | BASE YEAR | | CURRENT YEAR | | RANK ¹ | MI RATE | PERCENT CHANGE IN RATE | |
|---|------------------|-------|------------------|-------|-------------------|---------|------------------------|--------|
| | NUMBER | RATE | NUMBER | RATE | | | WORSE | BETTER |
| Economic Security** | <u>2005</u> | | <u>2009</u> | | | | | |
| Children in poverty | | | | | | | | |
| • ages 0–17 | 2,010 | 18.6% | 2,780 | 26.8% | 62 | 22.2% | 44 | |
| • ages 5–17 | 1,251 | 16.0% | 1,829 | 24.7% | 64 | 20.2% | 54 | |
| | <u>2006</u> | | <u>2010</u> | | | | | |
| Students receiving free/reduced price school lunches ² | 3,058 | 43.9% | 3,153 | 52.6% | 48 | 46.5% | 20 | |
| Child Health | <u>1998–2000</u> | | <u>2007–2009</u> | | | | | |
| Less than adequate prenatal care (2008–09)‡ | — | — | 242 | 44.2% | 81 | 29.5% | | |
| Low-birthweight babies | 36 | 6.3% | 38 | 6.7% | 24 of 81 | 8.5% | 7 | |
| Infant mortality (per 1,000) | 4 | 6.4 | 2 | 3.5 | 3 of 49 | 7.6 | | 45 |
| Child deaths, ages 1–14 (per 100,000) | 2 | * | 1 | * | * of 34 | 17.4 | | |
| Adolescence | | | | | | | | |
| Births to teens, ages 15–19 (per 1,000) | 84 | 54.7 | 69 | 48.4 | 72 | 33.3 | | 11 |
| Teen deaths (per 100,000) | 4 | 111.7 | 1 | * | * of 39 | 55.6 | | |
| | <u>2007</u> | | <u>2010</u> | | | | | |
| High school dropouts** | 76 | 14.4% | 43 | 8.3% | 37 of 80 | 11.1% | | 43 |
| Abuse/Neglect (per 1,000) | <u>FY2000</u> | | <u>FY2010</u> | | | | | |
| Children in investigated families | 954 | 81.6 | 1,327 | 125.1 | 77 | 70.1 | 53 | |
| Confirmed victims | 178 | 15.2 | 456 | 43.0 | 79 | 13.8 | 183 | |
| Children in out-of-home care | 70 | 6.0 | 76 | 7.2 | 64 of 76 | 5.1 | 20 | |
| Education (not proficient in math) | <u>2003</u> | | <u>2010</u> | | | | | |
| Fourth grade (MEAP) | 191 | 43.0% | 41 | 8.9% | 58 | 8.5% | | 79 |
| Eighth grade (MEAP) | 251 | 54.0% | 80 | 20.6% | 45 | 22.0% | | 62 |
| | <u>2008</u> | | <u>2010</u> | | | | | |
| High school students (MME) | 280 | 61.3% | 250 | 57.9% | 73 | 49.6% | | 6 |



¹ A ranking of 1 means a county has the “best” rate compared to other counties in the state. Unless noted, the ranking is based on 82–83 counties.
² Family income for eligible students is below 185 percent poverty level.
 * Sometimes a rate could not be calculated because of low incidence of events or unavailable data.
 ** Due to changes in the data measures, comparisons between 2000 and the current year could not be made for some indicators.
 ‡ Due to Michigan’s revised birth certificate, 2008–09 data cannot be compared with those of previous years.
 MME – Michigan Merit Exam instead of the MEAP.
 Beginning in 2007 Michigan high school students have taken the ACT college entrance exam.

Missing bars indicate no change or a rate could not be calculated; a “0” reflects no change. Percentage change is calculated with unrounded rates.