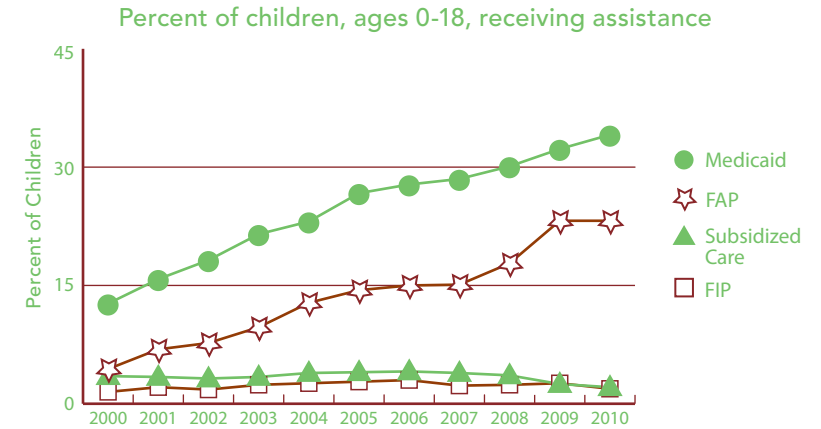


BACKGROUND INFORMATION (ALL DATA ARE FOR 2010 UNLESS OTHERWISE NOTED.)



	NUMBER	RATE	MI
<b>FAMILY SUPPORT PROGRAMS</b>			
<b>Children receiving...</b>			
• subsidized child care, ages 0–12 <sup>1</sup>	202	2.1%	3.4%
• FIP cash assistance <sup>1,3</sup>	288	1.9%	6.2%
• Food Assistance Program <sup>1,4</sup>	3,445	23.2%	30.4%
<b>Children with support owed</b>			
• receiving none (% of those owed)	558	18.6%	29.5%
• receiving less than 70% of amount	1,578	52.7%	62.6%



Source: Michigan Department of Human Services and Michigan Department of Community Health, Vital Records and Health Data Development Section.



	2000	2010	% CHANGE
<b>POPULATION</b>			
<b>Child population</b>			
0–17	15,446	14,458	-6.4%
• Ages 0-4	3,773	3,535	-6.3%
• Ages 5-9	4,301	3,982	-7.4%
• Ages 10-14	4,617	4,265	-7.6%
• Ages 15-19	4,213	4,271	1.4%

	NUMBER	RATE	MI
<b>ACCESS TO HEALTH CARE</b>			
Children insured	13,843	95.4%	94.9%
Children, ages 0–18 insured by...			
• Medicaid <sup>1</sup>	5,060	34.1%	40.7%
• MICHild	187	1.3%	1.2%
Fully immunized toddlers, ages 19–35 months (for the series 4:3:1:3:3:1) <sup>1</sup>	694	79.0%	70.0%
Lead poisoning in children, ages 1–2			
• tested	373	27.0%	36.2%
• poisoned (% of tested)	2	*	0.8%
Children, ages 1–14, hospitalized for asthma (rate per 10,000) <sup>2</sup>	18	17.1	20.8
<b>CHILDREN WITH SPECIAL NEEDS</b>			
Babies with a birth defect**	34	4.9%	6.6%
Students in Special Education <sup>1</sup>	1,026	13.6%	14.4%
Children receiving Supplemental Security Income (rate per 1,000) <sup>1</sup>	136	9.6	19.2

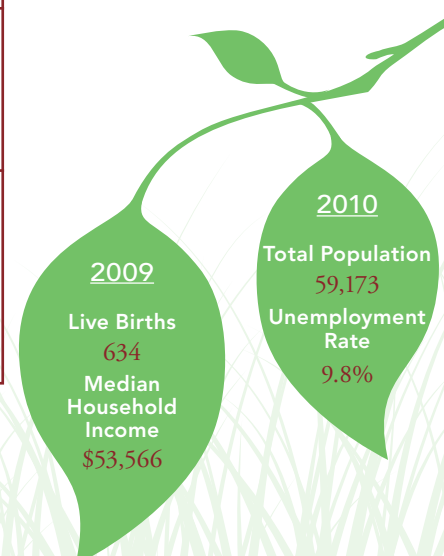
1 As of December 2010.  
 2 Annual rate and number are based on the three-year period 2007–2009 and only for counties with a total number over 20.  
 3 Family Independence Program.  
 4 State name for the federal Supplemental Nutrition Assistance Program, formerly called “food stamps.”

Note: Percentages reflect percent of population unless otherwise noted.  
 \* Sometimes a rate could not be calculated because of low incidence of events or unavailable data.  
 \*\* Based on three year period 2006-2008.  
 N/A not available.  
 See Data Notes and Definitions for details.

TRENDS IN CHILD WELL-BEING 2000–2008/09\*\*



	BASE YEAR		CURRENT YEAR		RANK <sup>1</sup>	MI RATE	PERCENT CHANGE IN RATE	
	NUMBER	RATE	NUMBER	RATE			WORSE	BETTER
<b>Economic Security**</b>	<u>2005</u>		<u>2009</u>					
Children in poverty								
• ages 0–17	1,748	12.1%	2,111	15.2%	14	22.2%	26	
• ages 5–17	1,078	9.9%	1,374	13.2%	12	20.2%	33	
	<u>2006</u>		<u>2010</u>					
Students receiving free/reduced price school lunches <sup>2</sup>	2,360	29.3%	2,989	39.7%	13	46.5%	35	
<b>Child Health</b>	<u>1998–2000</u>		<u>2007–2009</u>					
Less than adequate prenatal care (2008–09)‡	—	—	224	33.4%	53	29.5%		
Low-birthweight babies	58	8.2%	41	6.2%	12 of 81	8.5%		24
Infant mortality (per 1,000)	6	8.4	5	7.5	33 of 49	7.6		10
Child deaths, ages 1–14 (per 100,000)	4	30.7	2	*	* of 34	17.4		
<b>Adolescence</b>								
Births to teens, ages 15–19 (per 1,000)	67	33.9	72	35.9	50	33.3	6	
Teen deaths (per 100,000)	5	113.1	2	57.0	25 of 39	55.6		50
	<u>2007</u>		<u>2010</u>					
High school dropouts**	33	5.6%	40	5.9%	15 of 80	11.1%	5	
<b>Abuse/Neglect (per 1,000)</b>	<u>FY2000</u>		<u>FY2010</u>					
Children in investigated families	806	52.2	1,127	79.9	31	70.1	53	
Confirmed victims	128	8.3	225	16.0	40	13.8	92	
Children in out-of-home care	43	2.8	50	3.5	18 of 76	5.1	27	
<b>Education (not proficient in math)</b>	<u>2003</u>		<u>2010</u>					
Fourth grade (MEAP)	161	28.0%	27	5.2%	16	8.5%		82
Eighth grade (MEAP)	316	51.5%	97	17.7%	29	22.0%		66
	<u>2008</u>		<u>2010</u>					
High school students (MME)	285	49.3%	253	45.7%	27	49.6%		7



<sup>1</sup> A ranking of 1 means a county has the “best” rate compared to other counties in the state. Unless noted, the ranking is based on 82–83 counties.  
<sup>2</sup> Family income for eligible students is below 185 percent poverty level.  
\* Sometimes a rate could not be calculated because of low incidence of events or unavailable data.  
\*\* Due to changes in the data measures, comparisons between 2000 and the current year could not be made for some indicators.  
‡ Due to Michigan’s revised birth certificate, 2008–09 data cannot be compared with those of previous years.  
MME – Michigan Merit Exam instead of the MEAP.  
Beginning in 2007 Michigan high school students have taken the ACT college entrance exam.

Missing bars indicate no change or a rate could not be calculated; a “0” reflects no change.  
Percentage change is calculated with unrounded rates.