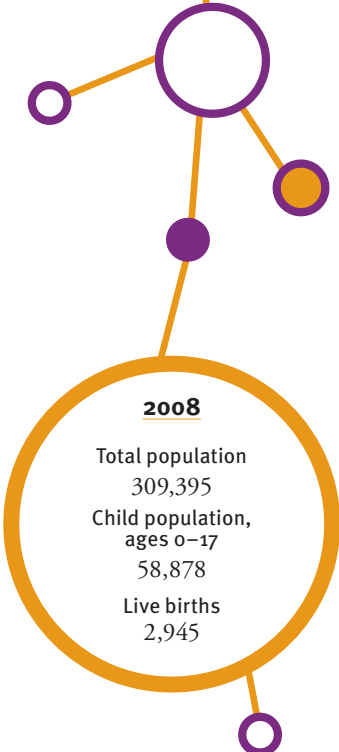


UPPER PENINSULA

TRENDS IN CHILD WELL-BEING 2000–2008/09**



	BASE YEAR		CURRENT YEAR		RANK ¹	MI RATE	PERCENT CHANGE IN RATE	
	NUMBER	RATE	NUMBER	RATE			WORSE	BETTER
Economic Security**	2005		2008					
Children in poverty								
• ages 0–17	11,048	18.0%	11,349	19.6%	—	19.3%	8	
• ages 5–17	7,208	15.5%	7,401	17.4%	—	17.8%	10	
	2006		2009					
Students receiving free/reduced price school lunches ²	17,657	38.7%	19,446	45.6%	—	45.8%	18	
Child Health	1998–2000		2006–2008					
Less than adequate prenatal care (2008) ³	—	—	902	30.6%	—	29.6%		
Low-birthweight babies	155	4.9%	196	6.5%	—	8.5%	32	
Infant mortality (per 1,000)	21	6.8	19	6.3	—	7.6		7
Child deaths, ages 1–14 (per 100,000)	10	17.8	9	19.3	—	17.3	9	
Adolescence								
Births to teens, ages 15–19 (per 1,000)	355	31.3	254	24.4	—	33.7		22
Teen deaths (per 100,000)	12	50.4	14	64.9	—	55.6	29	
	2007		2009					
High school dropouts**	388	9.7%	305	8.0%	—	11.3%		18
Abuse/Neglect (per 1,000)	FY2000		FY2009					
Children in investigated families	4,260	60.3	4,665	79.2	—	73.6	31	
Confirmed victims	585	8.3	763	13.0	—	12.9	56	
Children in out-of-home care	254	3.6	208	3.5	—	5.3		2
Education (below proficient in MEAP reading)	2003		2009					
Fourth grade	614	19.4%	275	10.2%	—	15.9%		47
Seventh grade	1,220	32.2%	454	14.7%	—	18.0%		54

¹ A ranking of 1 means a county has the “best” rate compared to other counties in the state. Unless noted, the ranking is based on 82–83 counties.

² Family income for eligible students is below 185 percent poverty level.

³ Due to Michigan’s revised birth certificate, 2008 data cannot be compared with those of previous years.

* Sometimes a rate could not be calculated because of low incidence of events or unavailable data.

** Due to changes in the data measures, comparisons between 2000 and the current year could not be made for some indicators.

N/A not available.

Missing bars indicate no change or a rate could not be calculated; a “0” reflects no change. Percentage change is calculated with unrounded rates.