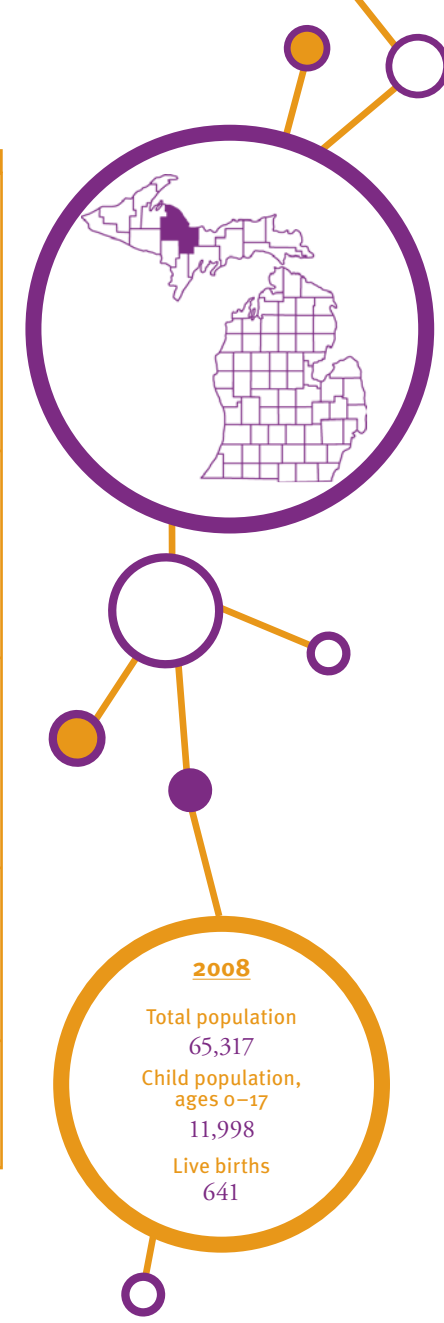


TRENDS IN CHILD WELL-BEING 2000–2008/09**

	BASE YEAR		CURRENT YEAR		RANK ¹	MI RATE	PERCENT CHANGE IN RATE	
	NUMBER	RATE	NUMBER	RATE			WORSE	BETTER
Economic Security**	2005		2008					
Children in poverty								
• ages 0–17	1,813	15.0%	1,917	16.2%	20	19.3%	8	
• ages 5–17	1,159	12.9%	1,247	14.5%	21	17.8%	12	
	2006		2009					
Students receiving free/reduced price school lunches ²	2,817	31.8%	3,056	36.5%	9	45.8%	15	
Child Health	1998–2000		2006–2008					
Less than adequate prenatal care (2008) ³	—	—	167	26.1%	29	29.6%	65	
Low-birthweight babies	25	4.2%	46	7.0%	34	8.5%		
Infant mortality (per 1,000)	4	7.4	3	4.5	6 of 52	7.6		38
Child deaths, ages 1–14 (per 100,000)	1	*	1	*	* of 36	17.3		
Adolescence								
Births to teens, ages 15–19 (per 1,000)	51	18.8	43	16.2	4	33.7		14
Teen deaths (per 100,000)	1	*	2	38.8	8 of 39	55.6		
	2007		2009					
High school dropouts**	45	5.6%	49	6.8%	16 of 80	11.3%	22	
Abuse/Neglect (per 1,000)	FY2000		FY2009					
Children in investigated families	807	58.4	712	59.3	14	73.6	71	2
Confirmed victims	91	6.6	135	11.3	23	12.9		
Children in out-of-home care	64	4.6	42	3.5	26 of 76	5.3		24
Education (below proficient in MEAP reading)	2003		2009					
Fourth grade	86	14.5%	48	9.5%	16	15.9%		35
Seventh grade	198	27.5%	81	12.9%	22	18.0%		53



¹ A ranking of 1 means a county has the “best” rate compared to other counties in the state. Unless noted, the ranking is based on 82–83 counties.
² Family income for eligible students is below 185 percent poverty level.
³ Due to Michigan’s revised birth certificate, 2008 data cannot be compared with those of previous years.
* Sometimes a rate could not be calculated because of low incidence of events or unavailable data.
** Due to changes in the data measures, comparisons between 2000 and the current year could not be made for some indicators.
N/A not available.

Missing bars indicate no change or a rate could not be calculated; a “0” reflects no change. Percentage change is calculated with unrounded rates.