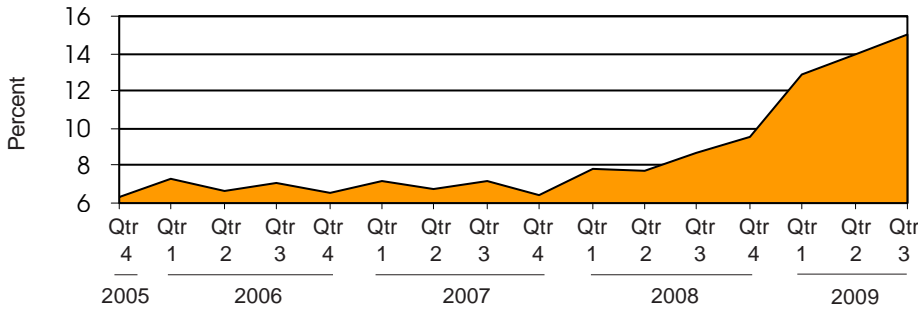
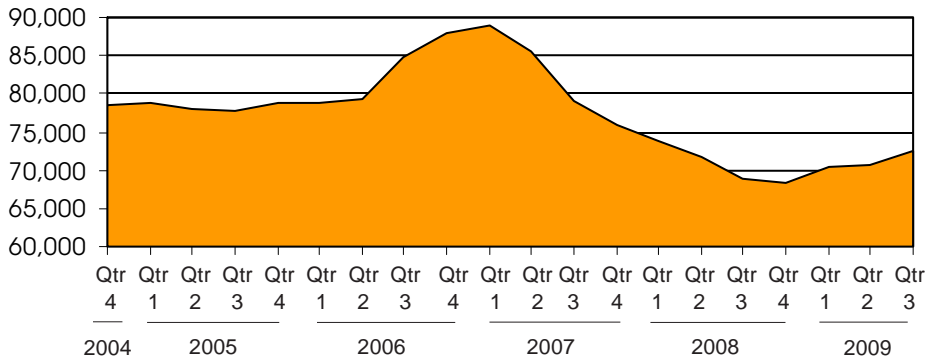


Michigan's Unemployment Rate Over the Past Four Years  
(not seasonally adjusted)



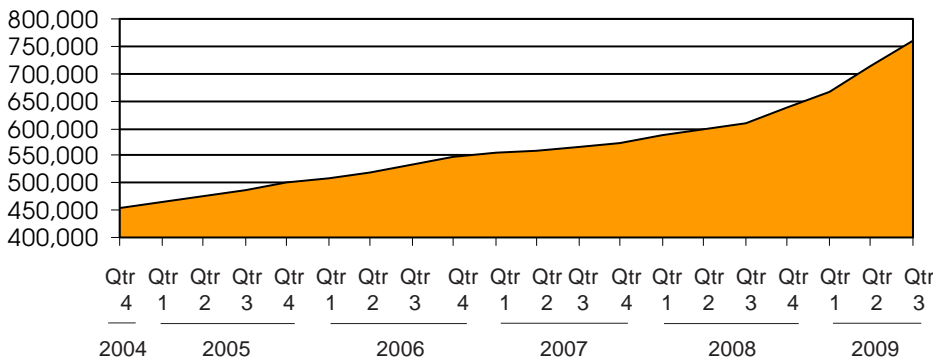
Source: Bureau of Labor Statistics

Family Independence Program Cases During  
the Past Five Years (regular FIP only)



Source: Michigan Department of Human Services

Food Assistance Households During the Past Five Years



Source: Michigan Department of Human Services

## Subsidized Child Care Cases Drop 25 Percent While Unemployment Skyrockets


### Unemployment

Michigan's third quarter unemployment rate jumped from 8.7 percent last year to 15 percent in 2009. Michigan's three largest counties, Wayne, Oakland and Macomb (comprising 40 percent of the state's population), had unemployment rates of 18.5, 15.3 and 18.2 respectively.

### Public Assistance

Food assistance cases continue to increase, and reached 760,000 during the third quarter. However, there were only 72,400 Family independence Program (FIP) cases (excluding extended FIP), slightly up from 68,400 cases the year before. Subsidized child care cases decreased to 72,434 cases from 96,259 cases in the third quarter last year. This is likely due not only to higher unemployment among households receiving the subsidies, but less availability or accessibility of child care due to an outdated payment rate structure.

We are now including county level child care data in the *Economic Security Bulletin*.

 Prepared by: Michigan League for Human Services	Unemployment (data not seasonally adjusted)						Food Assistance Program					
	Unemployment Rate			Number Unemployed			Total Number of Applications		Average Number of Households Receiving Food Assistance Per Month			
	County	Qtr 3 2008	Qtr 3 2009	+/- points	Qtr 3 2008	Qtr 3 2009	% change	Qtr 3 2009	% change	Qtr 3 2008	Qtr 3 2009	% change
<b>Michigan<sup>1</sup></b>	<b>8.7</b>	<b>15.0</b>	<b>6.3</b>	<b>433,286</b>	<b>733,825</b>	<b>69.4</b>	*	*	<b>609,824</b>	<b>760,137</b>	<b>24.6</b>	
Alcona	10.7	17.8	7.1	480	801	66.9	*	*	608	710	16.7	
Alger	8.5	12.4	3.9	378	541	43.1	*	*	395	519	31.2	
Allegan	7.7	13.3	5.5	4,321	7,319	69.4	*	*	4,668	6,208	33.0	
Alpena	9.5	14.3	4.8	1,412	2,160	52.9	*	*	2,437	2,892	18.7	
Antrim	8.6	14.3	5.7	1,073	1,776	65.5	*	*	1,077	1,398	29.8	
Arenac	9.4	16.1	6.7	775	1,297	67.4	*	*	1,316	1,574	19.6	
Baraga	12.7	24.2	11.5	554	1,116	101.4	*	*	486	568	17.0	
Barry	6.9	10.8	3.9	2,082	3,124	50.0	*	*	2,608	3,386	29.8	
Bay	7.9	12.6	4.7	4,372	6,849	56.7	*	*	7,418	8,940	20.5	
Benzie	7.8	11.7	3.9	718	1,059	47.5	*	*	790	1,050	33.0	
Berrien	8.5	13.6	5.1	6,974	10,670	53.0	*	*	11,221	13,201	17.6	
Branch	9.5	14.5	5.0	2,117	3,226	52.4	*	*	2,589	3,476	34.3	
Calhoun	8.2	12.8	4.6	5,721	8,674	51.6	*	*	11,771	15,401	30.8	
Cass	6.8	11.1	4.3	1,807	2,885	59.7	*	*	3,030	3,968	30.9	
Charlevoix	9.2	13.4	4.3	1,347	1,951	44.8	*	*	967	1,307	35.1	
Cheboygan	7.0	8.8	1.8	928	1,077	16.0	*	*	1,742	2,025	16.2	
Chippewa	8.8	11.8	3.0	1,574	2,070	31.5	*	*	1,927	2,459	27.6	
Clare	11.6	17.3	5.7	1,526	2,247	47.2	*	*	3,065	3,593	17.2	
Clinton	6.2	10.0	3.8	2,305	3,594	56.0	*	*	2,081	2,836	36.2	
Crawford	9.5	13.7	4.2	629	876	39.2	*	*	1,005	1,199	19.3	
Delta	7.9	12.2	4.3	1,596	2,443	53.1	*	*	2,388	2,872	20.2	
Dickinson	7.2	12.2	5.0	1,052	1,751	66.5	*	*	1,235	1,604	29.8	
Eaton	6.5	10.9	4.4	3,807	6,183	62.4	*	*	3,940	5,357	35.9	
Emmet	7.9	11.9	4.0	1,658	2,482	49.7	*	*	1,544	1,943	25.9	
Genesee	11.0	16.5	5.5	22,365	31,634	41.4	*	*	39,248	47,328	20.6	
Gladwin	11.1	16.8	5.7	1,195	1,787	49.5	*	*	1,938	2,241	15.6	
Gogebic	8.9	13.4	4.5	681	1,018	49.4	*	*	1,188	1,462	23.1	
Gr. Traverse	7.1	11.7	4.6	3,617	5,914	63.5	*	*	4,346	5,381	23.8	
Gratiot	10.2	14.8	4.5	1,986	2,842	43.1	*	*	2,380	2,932	23.2	
Hillsdale	11.6	18.3	6.7	2,465	3,908	58.5	*	*	2,535	3,252	28.3	
Houghton	7.7	10.8	3.1	1,317	1,812	37.5	*	*	1,908	2,245	17.7	
Huron	9.5	15.4	5.9	1,577	2,476	57.0	*	*	1,857	2,203	18.6	
Ingham	7.7	12.3	4.6	11,714	18,384	56.9	*	*	19,060	24,814	30.2	
Ionia	9.2	14.4	5.2	2,801	4,284	53.0	*	*	3,297	4,262	29.3	
Iosco	9.8	16.6	6.8	1,099	1,860	69.2	*	*	2,108	2,714	28.8	
Iron	8.1	11.7	3.6	481	690	43.5	*	*	701	824	17.6	
Isabella	6.4	8.8	2.4	2,513	3,426	36.3	*	*	4,817	7,180	49.1	
Jackson	9.3	15.3	6.1	7,118	11,488	61.4	*	*	9,522	12,226	28.4	
Kalamazoo	7.2	11.4	4.2	9,679	14,875	53.7	*	*	16,464	21,083	28.1	
Kalkaska	8.4	14.3	5.9	751	1,296	72.5	*	*	1,197	1,508	25.9	
Kent	7.6	11.9	4.4	24,246	37,232	53.6	*	*	33,897	42,054	24.1	
Keweenaw	9.4	13.4	4.0	95	134	41.5	*	*	95	116	22.0	
Lake	11.6	17.8	6.2	465	686	47.7	*	*	1,248	1,476	18.3	
Lapeer	9.2	18.1	8.9	4,012	7,841	95.4	*	*	3,374	4,463	32.3	
Leelanau	5.7	8.4	2.7	667	959	43.7	*	*	422	610	44.4	
Lenawee	10.9	16.9	6.0	5,270	8,113	53.9	*	*	4,835	6,348	31.3	
Livingston	6.6	13.4	6.8	6,136	12,007	95.7	*	*	3,513	4,912	39.8	
Luce	9.1	12.7	3.7	252	352	39.8	*	*	448	519	15.9	
Mackinac	4.7	5.8	1.0	363	422	16.5	*	*	421	576	36.8	
Macomb	9.0	18.2	9.2	37,523	75,714	101.8	*	*	33,059	45,226	36.8	

<sup>1</sup>In some cases the Michigan number is slightly different from the county total.

\*The DHS did not publish application data for this quarter, and consequently that data is not included in this edition.

Data sources: Unemployment: Bureau of Labor Statistics, Local Area Unemployment Statistics; Public Assistance: Michigan Department of Human Services.

Family Independence Program (Cash Assistance)					Child Day Care				Medicaid						
Total Number of Applications		Average Number of Families Receiving Cash Assistance Per Month <sup>2</sup>			Average Number of Children Receiving Care Per month		Average Payment Per Child		Total Number of Applications		Average Number of Persons Eligible for Medicaid ONLY (Excludes FIP & SSI Recipients)			Percent of Population Eligible for Medicaid (Includes FIP & SSI Recipients) <sup>3</sup>	
Qtr3 2009	% change	Qtr 3 2008	Qtr 3 2009	% change	Qtr 3 2008	Qtr 3 2009	Qtr 3 2008	Qtr 3 2009	Qtr 3 2009	% change	Qtr 3 2008	Qtr 3 2009	% change	Qtr 3 2008	Qtr 3 2009
*	*	<b>73,586</b>	<b>75,604</b>	<b>2.7</b>	<b>96,259</b>	<b>72,434</b>	<b>\$352</b>	<b>\$347</b>	*	*	<b>1,152,491</b>	<b>1,325,423</b>	<b>15.0</b>	<b>15.6%</b>	<b>17.6%</b>
*	*	20	27	39.0	42	17	\$257	\$264	*	*	1,290	1,433	11.1	13.7%	15.0%
*	*	19	24	30.4	34	18	\$240	\$222	*	*	1,122	1,268	13.0	14.0%	16.0%
*	*	375	415	10.6	636	546	\$333	\$307	*	*	13,301	16,174	21.6	13.9%	16.6%
*	*	196	213	8.3	283	220	\$270	\$262	*	*	4,482	4,830	7.8	20.0%	21.5%
*	*	53	47	-11.9	153	106	\$312	\$268	*	*	3,216	3,775	17.4	15.4%	17.8%
*	*	94	77	-18.4	136	132	\$297	\$275	*	*	2,536	2,927	15.4	19.9%	22.4%
*	*	42	53	27.2	51	42	\$227	\$248	*	*	1,161	1,230	6.0	17.0%	18.1%
*	*	219	235	7.3	320	216	\$309	\$290	*	*	5,925	7,322	23.6	12.1%	14.7%
*	*	686	637	-7.1	1,309	1,081	\$304	\$287	*	*	13,525	14,959	10.6	16.5%	18.0%
*	*	37	37	0.9	96	68	\$289	\$289	*	*	2,196	2,630	19.8	14.6%	17.3%
*	*	1,283	1,286	0.2	2,158	1,301	\$318	\$327	*	*	21,609	24,632	14.0	18.5%	20.6%
*	*	266	354	33.0	363	303	\$304	\$291	*	*	6,334	7,425	17.2	17.0%	20.2%
*	*	1,533	1,753	14.4	1,548	1,222	\$288	\$306	*	*	19,052	22,509	18.1	19.9%	23.1%
*	*	290	331	14.2	443	376	\$321	\$328	*	*	6,998	8,348	19.3	17.2%	20.4%
*	*	53	39	-25.3	122	127	\$297	\$277	*	*	2,904	3,413	17.5	12.6%	14.8%
*	*	93	80	-13.7	169	131	\$288	\$285	*	*	4,435	4,737	6.8	19.5%	21.0%
*	*	170	166	-2.4	248	225	\$278	\$265	*	*	4,449	4,947	11.2	14.6%	16.0%
*	*	258	264	2.5	229	144	\$253	\$273	*	*	5,348	5,860	9.6	23.3%	25.7%
*	*	115	114	-0.9	330	224	\$314	\$322	*	*	4,962	5,967	20.3	8.4%	9.8%
*	*	74	64	-14.0	114	72	\$276	\$272	*	*	2,136	2,391	11.9	18.1%	19.7%
*	*	144	137	-4.6	264	181	\$246	\$225	*	*	5,080	5,713	12.5	16.9%	18.9%
*	*	42	57	34.6	145	142	\$214	\$185	*	*	3,566	3,941	10.5	15.3%	17.0%
*	*	258	254	-1.8	737	530	\$360	\$355	*	*	9,167	11,414	24.5	10.3%	12.4%
*	*	56	53	-5.4	191	193	\$282	\$251	*	*	4,504	5,053	12.2	15.4%	16.9%
*	*	5,940	6,638	11.8	8,108	6,590	\$404	\$399	*	*	60,355	67,133	11.2	20.6%	23.2%
*	*	165	158	-4.3	164	128	\$259	\$265	*	*	3,866	4,193	8.5	18.8%	20.5%
*	*	151	185	22.5	86	46	\$225	\$208	*	*	2,222	2,271	2.2	18.4%	19.9%
*	*	161	151	-6.0	616	447	\$317	\$303	*	*	10,625	11,857	11.6	14.3%	15.8%
*	*	203	186	-8.5	381	272	\$290	\$281	*	*	6,047	6,767	11.9	17.7%	19.3%
*	*	225	271	20.6	312	224	\$288	\$264	*	*	6,013	7,026	16.8	16.4%	19.2%
*	*	75	85	14.3	111	93	\$230	\$211	*	*	4,726	5,112	8.2	15.7%	17.0%
*	*	108	98	-8.7	222	160	\$250	\$236	*	*	4,638	5,125	10.5	16.8%	18.5%
*	*	1,376	1,642	19.4	2,529	1,870	\$394	\$396	*	*	31,830	35,756	12.3	14.8%	16.8%
*	*	225	291	29.3	382	281	\$304	\$289	*	*	7,616	8,878	16.6	14.4%	16.8%
*	*	145	154	6.0	225	132	\$277	\$269	*	*	4,177	4,683	12.1	19.8%	22.3%
*	*	39	69	78.4	48	35	\$223	\$176	*	*	1,975	1,996	1.1	19.3%	20.7%
*	*	240	185	-22.8	500	330	\$298	\$285	*	*	7,230	8,108	12.1	13.4%	14.6%
*	*	933	1,110	19.0	1,257	942	\$308	\$323	*	*	18,986	22,351	17.7	15.3%	18.1%
*	*	1,681	1,950	16.0	2,447	1,917	\$338	\$347	*	*	26,635	30,323	13.8	14.8%	16.7%
*	*	56	62	10.7	150	93	\$290	\$271	*	*	3,043	3,478	14.3	20.8%	23.5%
*	*	4,018	4,701	17.0	6,223	4,765	\$363	\$358	*	*	72,296	83,150	15.0	15.7%	18.0%
*	*	4	1	-75.0	4	2	\$197	\$208	*	*	224	263	17.4	12.8%	13.9%
*	*	84	105	25.4	109	67	\$254	\$262	*	*	1,972	2,197	11.4	24.4%	27.5%
*	*	253	279	10.1	438	361	\$307	\$283	*	*	9,236	11,081	20.0	11.8%	14.1%
*	*	11	16	41.2	62	53	\$307	\$297	*	*	1,359	1,581	16.3	6.8%	8.0%
*	*	357	434	21.5	825	631	\$328	\$310	*	*	11,579	13,573	17.2	13.9%	16.3%
*	*	222	221	-0.5	316	264	\$391	\$387	*	*	9,751	12,383	27.0	6.0%	7.6%
*	*	39	39	-0.8	41	30	\$253	\$333	*	*	1,030	1,093	6.1	20.3%	21.9%
*	*	32	27	-14.7	45	31	\$266	\$282	*	*	1,227	1,354	10.3	13.6%	15.1%
*	*	3,077	3,362	9.3	4,398	3,704	\$395	\$389	*	*	78,560	91,292	16.2	11.8%	13.6%


<sup>1</sup> In some cases the Michigan number is slightly different from the county total.

<sup>2</sup> Population figures based on U.S. Census Bureau county estimates from July of the previous year.

<sup>3</sup> Includes both regular and extended FIP.

\*The DHS did not publish application data for this quarter, and consequently that data is not included in this edition.

Data sources: Unemployment: Bureau of Labor Statistics, Local Area Unemployment Statistics; Public Assistance: Michigan Department of Human Services.

 Prepared by: Michigan League for Human Services	Unemployment (data not seasonally adjusted)						Food Assistance Program					
	Unemployment Rate			Number Unemployed			Total Number of Applications		Average Number of Households Receiving Food Assistance Per Month			
	County	Qtr 3 2008	Qtr 3 2009	+/- points	Qtr 3 2008	Qtr 3 2009	% change	Qtr 3 2009	% change	Qtr 3 2008	Qtr 3 2009	% change
Manistee	8.4	12.6	4.2	1,019	1,492	46.5	*	*	1,624	1,939	19.4	
Marquette	6.8	10.3	3.5	2,454	3,641	48.4	*	*	3,301	4,380	32.7	
Mason	7.8	12.9	5.1	1,193	1,972	65.4	*	*	1,873	2,394	27.8	
Mecosta	9.2	13.8	4.6	1,775	2,624	47.8	*	*	3,753	4,770	27.1	
Menominee	6.8	13.3	6.5	905	1,780	96.7	*	*	1,283	1,631	27.2	
Midland	6.6	10.3	3.7	2,854	4,395	54.0	*	*	4,031	4,847	20.3	
Missaukee	10.5	15.5	5.0	680	959	41.1	*	*	777	1,017	30.8	
Monroe	10.1	15.3	5.3	7,707	11,566	50.1	*	*	6,161	7,939	28.9	
Montcalm	12.6	18.2	5.6	3,332	4,767	43.1	*	*	4,055	5,160	27.2	
Montmorency	12.2	19.1	6.9	492	793	61.1	*	*	803	964	20.0	
Muskegon	9.4	16.4	6.9	8,546	14,568	70.5	*	*	17,188	20,847	21.3	
Newaygo	9.5	14.2	4.7	2,179	3,154	44.8	*	*	3,139	4,190	33.5	
Oakland	7.2	15.3	8.2	44,144	92,596	109.8	*	*	35,397	46,743	32.1	
Oceana	9.4	15.4	6.0	1,416	2,253	59.1	*	*	2,069	2,511	21.3	
Ogemaw	8.5	13.1	4.6	824	1,295	57.2	*	*	2,129	2,431	14.2	
Ontonagon	8.2	13.6	5.4	276	452	63.9	*	*	420	503	19.7	
Osceola	10.0	16.2	6.2	945	1,506	59.4	*	*	1,572	1,997	27.0	
Oscoda	12.9	19.6	6.7	530	800	51.0	*	*	797	952	19.4	
Otsego	9.5	14.7	5.2	1,171	1,789	52.8	*	*	1,635	2,078	27.1	
Ottawa	7.4	13.2	5.8	9,977	17,193	72.3	*	*	6,802	10,494	54.3	
Presque Isle	11.0	16.3	5.3	681	1,018	49.4	*	*	689	840	21.9	
Roscommon	10.8	14.8	4.0	1,134	1,508	32.9	*	*	2,326	2,752	18.3	
Saginaw	8.9	13.4	4.6	8,399	12,334	46.9	*	*	17,160	20,595	20.0	
Saint Clair	10.2	19.0	8.8	8,485	15,640	84.3	*	*	10,184	13,174	29.4	
Saint Joseph	10.2	14.6	4.4	3,251	4,582	40.9	*	*	3,838	4,964	29.3	
Sanilac	11.9	18.6	6.7	2,527	3,862	52.8	*	*	3,031	3,717	22.6	
Schoolcraft	10.0	13.1	3.1	397	517	30.1	*	*	563	642	13.9	
Shiawassee	10.4	15.9	5.4	3,684	5,491	49.0	*	*	4,275	5,207	21.8	
Tuscola	10.9	17.2	6.3	3,031	4,666	53.9	*	*	3,050	3,772	23.7	
Van Buren	8.2	13.2	5.0	3,266	5,142	57.5	*	*	5,414	6,601	21.9	
Washtenaw	6.7	9.7	3.0	12,296	17,164	39.6	*	*	13,215	17,338	31.2	
Wayne	10.6	18.5	7.9	92,285	162,218	75.8	*	*	180,322	212,382	17.8	
Wexford	12.4	19.1	6.7	1,835	2,760	50.5	*	*	2,756	3,349	21.5	

FACT

Low- and middle-income taxpayers should remember to file for the earned income and child tax credits when they do their taxes. In the 2007 tax year, more than 710,000 Michigan residents got a refund from the federal earned income credit. There is now also a state earned income credit.

<sup>1</sup>In some cases the Michigan number is slightly different from the county total.

\*The DHS did not publish application data for this quarter, and consequently that data is not included in this edition.

Data sources: Unemployment: Bureau of Labor Statistics, Local Area Unemployment Statistics; Public Assistance: Michigan Department of Human Services.

Family Independence Program (Cash Assistance)					Child Day Care				Medicaid						
Total Number of Applications		Average Number of Families Receiving Cash Assistance Per Month <sup>2</sup>			Average Number of Children Receiving Care Per month		Average Payment Per Child		Total Number of Applications		Average Number of Persons Eligible for Medicaid ONLY (Excludes FIP & SSI Recipients)			Percent of Population Eligible for Medicaid (Includes FIP & SSI Recipients) <sup>3</sup>	
Qtr3 2009	% change	Qtr 3 2008	Qtr 3 2009	% change	Qtr 3 2008	Qtr 3 2009	Qtr 3 2008	Qtr 3 2009	Qtr 3 2009	% change	Qtr 3 2008	Qtr 3 2009	% change	Qtr 3 2008	Qtr 3 2009
*	*	131	155	18.9	151	87	\$240	\$242	*	*	3,089	3,420	10.7	16.2%	17.9%
*	*	178	195	9.5	283	270	\$261	\$255	*	*	6,812	7,829	14.9	12.7%	14.3%
*	*	160	134	-16.5	399	323	\$266	\$280	*	*	4,185	5,032	20.3	18.1%	21.0%
*	*	207	178	-14.3	260	177	\$273	\$269	*	*	6,123	6,895	12.6	18.2%	20.2%
*	*	69	66	-3.4	156	103	\$235	\$230	*	*	3,002	3,464	15.4	14.5%	16.7%
*	*	251	286	13.8	481	368	\$302	\$289	*	*	8,910	9,783	9.8	13.1%	14.4%
*	*	43	54	25.8	77	95	\$292	\$223	*	*	1,965	2,342	19.2	15.0%	17.9%
*	*	679	733	8.0	753	580	\$370	\$342	*	*	13,223	15,775	19.3	11.1%	13.0%
*	*	215	217	0.9	369	287	\$295	\$285	*	*	9,601	10,765	12.1	18.5%	20.5%
*	*	39	40	3.4	86	44	\$265	\$259	*	*	1,709	1,838	7.5	20.2%	21.6%
*	*	2,772	3,139	13.3	2,884	2,222	\$296	\$304	*	*	24,980	28,464	13.9	21.7%	24.5%
*	*	221	277	25.5	312	254	\$311	\$295	*	*	7,395	9,070	22.6	18.6%	22.5%
*	*	3,354	3,762	12.2	4,979	3,539	\$408	\$402	*	*	79,012	92,856	17.5	8.5%	9.9%
*	*	248	271	9.4	394	228	\$308	\$317	*	*	5,468	6,187	13.1	24.5%	27.6%
*	*	147	153	4.3	291	209	\$282	\$292	*	*	4,023	4,219	4.9	23.7%	25.4%
*	*	21	25	19.0	35	13	\$249	\$227	*	*	924	963	4.2	16.4%	17.5%
*	*	103	102	-1.3	129	115	\$298	\$283	*	*	3,345	4,037	20.7	18.2%	21.8%
*	*	52	42	-19.2	49	37	\$216	\$205	*	*	1,502	1,662	10.6	21.3%	22.8%
*	*	123	109	-11.4	302	249	\$340	\$294	*	*	3,865	4,651	20.3	18.8%	22.4%
*	*	484	546	12.7	1,122	862	\$334	\$312	*	*	20,476	26,708	30.4	9.1%	11.7%
*	*	35	36	1.9	46	34	\$284	\$254	*	*	1,578	1,746	10.6	13.9%	15.4%
*	*	142	154	8.5	205	156	\$306	\$258	*	*	4,117	4,517	9.7	20.2%	22.5%
*	*	2,481	2,573	3.7	3,682	2,980	\$326	\$315	*	*	27,105	29,720	9.6	20.3%	22.1%
*	*	957	917	-4.2	1,296	875	\$341	\$316	*	*	20,060	24,544	22.4	14.8%	17.6%
*	*	402	417	3.9	472	338	\$318	\$349	*	*	9,994	11,933	19.4	19.4%	22.8%
*	*	163	190	17.0	342	253	\$293	\$289	*	*	6,809	7,900	16.0	18.3%	21.5%
*	*	35	50	42.9	46	33	\$194	\$227	*	*	1,312	1,315	0.2	19.3%	20.6%
*	*	358	391	9.3	553	397	\$298	\$275	*	*	9,428	10,627	12.7	16.2%	18.4%
*	*	264	266	1.0	368	305	\$292	\$283	*	*	7,951	9,123	14.7	17.0%	19.4%
*	*	460	510	10.9	672	437	\$307	\$344	*	*	12,986	15,325	18.0	20.5%	23.8%
*	*	1,142	1,178	3.2	2,014	1,521	\$409	\$392	*	*	22,921	27,107	18.3	8.6%	10.0%
*	*	31,243	29,045	-7.0	32,550	23,651	\$364	\$357	*	*	276,140	311,759	12.9	22.0%	24.0%
*	*	215	178	-17.4	383	278	\$287	\$268	*	*	5,962	6,718	12.7	23.2%	25.7%

FACT

Tax filers who claim the earned income credit should avoid using paid tax services and taking out "rapid refund" loans. These services are predatory and can cost filers up to 30 percent of their refund. Instead, they can file online for free using I-CAN E-File, found at [www.MichiganEIC.org](http://www.MichiganEIC.org). They can also call 2-1-1 to find out about free tax preparation in their communities.

<sup>1</sup> In some cases the Michigan number is slightly different from the county total.

<sup>2</sup> Population figures based on U.S. Census Bureau county estimates from July of the previous year.

<sup>3</sup> Includes both regular and extended FIP.

\*The DHS did not publish application data for this quarter, and consequently that data is not included in this edition.

Data sources: Unemployment: Bureau of Labor Statistics, Local Area Unemployment Statistics; Public Assistance: Michigan Department of Human Services.

Employment Trends by Selected Industries in Michigan  
(data not seasonally adjusted, rounded to the nearest hundred)

Industry	Avg 2008 Qtr 3	Avg 2009 Qtr3	% Change	Industry	Avg 2008 Qtr 3	Avg 2009 Qtr 3	% Change
<b>TOTAL NONFARM</b>	<b>4,138,800</b>	<b>3,836,000</b>	<b>-7.3</b>	Wholesale Electronic Markets and Agents and Brokers	24,000	19,400	-19.2
<b>TOTAL PRIVATE</b>	<b>3,528,300</b>	<b>3,234,100</b>	<b>-8.3</b>	<b>•Retail Trade</b>	<b>478,900</b>	<b>450,200</b>	<b>-6.0</b>
<b>GOODS PRODUCING</b>	<b>739,000</b>	<b>598,900</b>	<b>-19.0</b>	Motor Vehicle and Parts Dealers	55,600	49,500	-11.0
<b>SERVICE-PROVIDING</b>	<b>3,399,800</b>	<b>3,237,100</b>	<b>-4.8</b>	Building Material and Garden Equip. and Supplies Dealers	43,100	39,700	-7.9
<b>Natural Resources and Mining</b>	<b>8,300</b>	<b>7,800</b>	<b>-6.0</b>	Food and Beverage Stores	80,600	74,300	-7.8
<b>Construction</b>	<b>165,500</b>	<b>135,300</b>	<b>-18.2</b>	Health and Personal Care	33,300	31,300	-6.0
Construction of Buildings	36,100	30,100	-16.6	Gasoline Stations	24,500	23,900	-2.4
Heavy and Civil Engineering	19,600	17,600	-10.2	Clothing and Clothing Accessories	39,400	35,900	-8.9
Specialty Trade Contractors	109,900	87,600	-20.3	Sporting Goods, Hobby, Book, and Music Stores	22,300	21,700	-2.7
<b>Manufacturing</b>	<b>565,200</b>	<b>455,900</b>	<b>-19.3</b>	General Merchandise Stores	110,800	110,500	-0.3
<b>•Durable Goods</b>	<b>425,400</b>	<b>330,600</b>	<b>-22.3</b>	Miscellaneous Store Retail	25,700	23,700	-7.8
Nonmetallic Mineral Products	13,600	11,200	-17.6	<b>•Transportation &amp; Warehousing &amp; Utilities</b>	<b>124,700</b>	<b>114,000</b>	<b>-8.6</b>
Primary Metal Manufacturing	23,000	21,700	-5.7	Air Transportation	14,200	12,000	-15.5
Fabricated Metal Product	76,400	62,400	-18.3	Rail Transportation	4,500	4,500	0.0
Machinery Manufacturing	67,100	54,100	-19.4	Truck Transportation	39,200	34,300	-12.5
Computer and Electronic Products	21,000	20,600	-1.9	Warehousing and Storage	12,400	10,800	-12.9
Motor Vehicle Manufacturing	44,400	30,700	-30.9	<b>Information</b>	<b>61,500</b>	<b>54,800</b>	<b>-10.9</b>
Motor Vehicle Parts Manufacturing	104,800	76,800	-26.7	Publishing Industries	21,100	18,400	-12.8
Furniture and Related Products	23,900	21,600	-9.6	Telecommunications	22,000	20,800	-5.5
<b>•Non-Durable Goods</b>	<b>139,800</b>	<b>125,300</b>	<b>-10.4</b>	<b>Financial Activities</b>	<b>204,500</b>	<b>191,400</b>	<b>-6.4</b>
Food Manufacturing	35,600	35,400	-0.6	Finance and Insurance	151,700	142,100	-6.3
Printing and Related Support Activities	16,600	15,900	-4.2	Real Estate	36,300	33,800	-6.9
Chemical Manufacturing	27,700	26,800	-3.2	<b>Professional &amp; Business Services</b>	<b>553,400</b>	<b>486,800</b>	<b>-12.0</b>
Plastics and Rubber Products	36,100	32,600	-9.7	Legal Services	28,500	27,500	-3.5
<b>Trade Transportation &amp; Utilities</b>	<b>771,300</b>	<b>712,700</b>	<b>-7.6</b>	Accounting, Tax Preparation, Bookkeeping & Payroll Services	27,800	28,700	3.2
<b>•Wholesale Trade</b>	<b>167,700</b>	<b>148,500</b>	<b>-11.4</b>	Architectural Engineering	63,900	52,100	-18.5
Merchant Wholesalers Durable Goods	95,200	83,300	-12.5				
Merchant Wholesalers Nondurable Goods	48,400	45,800	-5.4				

Note: Industry details and subtotals may not sum to totals due to rounding.

Source: Department of Labor and Economic Growth/Office of Labor Market Information, Current Employment Statistics Section - (800) 225-3732



Employment Trends by Selected Industries in Michigan  
(data not seasonally adjusted, rounded to the nearest hundred)

Industry	Avg 2008 Qtr 3	Avg 2009 Qtr 3	% Change	Industry	Avg 2008 Qtr 3	Avg 2009 Qtr 3	% Change
Computer Systems Design	40,600	35,900	-11.6	<b>Government</b>	<b>610,500</b>	<b>601,900</b>	<b>-1.4</b>
Management, Scientific and Technical Consulting Services	19,300	16,100	-16.6	• <b>Federal Government</b>	<b>53,700</b>	<b>54,800</b>	<b>2.0</b>
Scientific Research and Development Services	20,600	18,900	-8.3	U.S. Postal Service	26,000	24,500	-5.8
Advertising and Related	14,900	13,500	-9.4	• <b>State Government</b>	<b>164,700</b>	<b>165,100</b>	<b>0.2</b>
Management of Companies	54,100	48,300	-10.7	State Government Educational Services	92,900	92,300	-0.6
Administrative & Support Services	261,100	223,700	-14.3	State Government Hospital Services	16,900	16,800	-0.6
<b>Educational and Health Services</b>	<b>602,400</b>	<b>607,800</b>	<b>0.9</b>	• <b>Local Government</b>	<b>392,100</b>	<b>382,000</b>	<b>-2.6</b>
• <b>Educational Services</b> (see also <b>Government</b> )	<b>74,200</b>	<b>73,600</b>	<b>-0.8</b>	Local Government Educational Services	202,400	193,300	-4.5
• <b>Health Care &amp; Social Assistance</b>	<b>528,100</b>	<b>534,200</b>	<b>1.2</b>	Local Government Hospitals	13,600	13,800	1.5
Ambulatory Health Care Services	179,400	184,200	2.7	Local Government Elementary and Secondary Schools	181,600	173,200	-4.6
Offices of Physicians	69,900	71,200	1.9	Local Government Junior Colleges	20,100	19,600	-2.5
Outpatient Care Centers	15,400	15,600	1.3				
Home Health Care Service	30,700	31,700	3.3				
Hospitals	192,900	193,200	0.2				
Nursing and Residential Care	95,000	95,900	0.9				
—Nursing Care Facilities	42,600	42,700	0.2				
Social Assistance	60,900	60,900	0.0				
—Individual and Family Services	27,200	27,500	1.1				
<b>Leisure and Hospitality</b>	<b>418,900</b>	<b>410,100</b>	<b>-2.1</b>				
Performing Arts Spectator Activities	9,800	10,400	6.1				
Amusement, Gambling & Recreation	57,000	53,500	-6.1				
Accommodation	38,000	36,300	-4.5				
Food Services and Drinking	309,000	303,300	-1.8				
<b>Other Services</b>	<b>177,300</b>	<b>171,700</b>	<b>-3.2</b>				
Repair and Maintenance	37,800	34,200	-9.5				
Personal and Laundry Services	39,400	37,300	-5.3				
Religious Grantmaking Civic Professional	100,100	100,100	0.0				

**VISIT OUR WEBSITE FOR MORE INFORMATION!**

The "Work and Wages" section of the Michigan League for Human Services website has information on Workforce Development, Work Supports, Unemployment, and Self-Sufficiency. It also includes back issues of the Economic Security Bulletin. Go to [www.MiLHS.org](http://www.MiLHS.org) and click the "Work and Wages" tab at the left.

Note: Industry details and subtotals may not sum to totals due to rounding.

Source: Department of Labor and Economic Growth/Office of Labor Market Information, Current Employment Statistics Section - (800) 225-3732



**Michigan League for Human Services**

1115 South Pennsylvania Avenue, Suite 202  
 Lansing, MI 48912-1658  
 (517) 487-5436 — Fax (517) 371-4546  
 Web site: www.milhs.org

*A United Way Agency*

Nonprofit  
 Organization  
 U.S. Postage  
**Paid**  
 Lansing, MI  
 Permit #1421

Percentage Change in Michigan Counties With Largest Increases  
 Third Quarter 2008 — Third Quarter 2009

Percentage Point Change in Unemployment Rate		Percent Change in Food Assistance Households		Percent Change in FIP Cash Assistance Families	
Baraga	11.5	Ottawa	54.3	Iron	78.4
<b>Macomb</b>	<b>9.2</b>	Isabella	49.1	Schoolcraft	42.9
Lapeer	8.9	Leelanau	44.4	Leelanau	41.2
<b>St. Clair</b>	<b>8.8</b>	<b>Livingston</b>	<b>39.8</b>	Alcona	39.0
<b>Oakland</b>	<b>8.2</b>	<b>Macomb</b>	<b>36.8</b>	Dickinson	34.6
<b>Wayne</b>	<b>7.9</b>	Mackinac	36.8	Branch	33.0
Alcona	7.1	Clinton	36.2	Alger	30.4
Montmorency	6.9	<b>Eaton</b>	<b>35.9</b>	Ionia	29.3
<b>Muskegon</b>	<b>6.9</b>	Charlevoix	35.1	Baraga	27.2
<b>Livingston</b>	<b>6.8</b>	Branch	34.3	Missaukee	25.8

Note: Counties in bold have population of 100,000 or more.

Sources: Unemployment: Bureau of Labor Statistics, Local Area Unemployment Statistics; Public Assistance: Michigan Department of Human Services