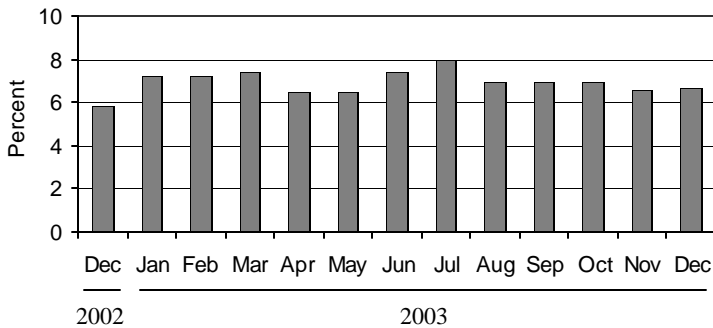




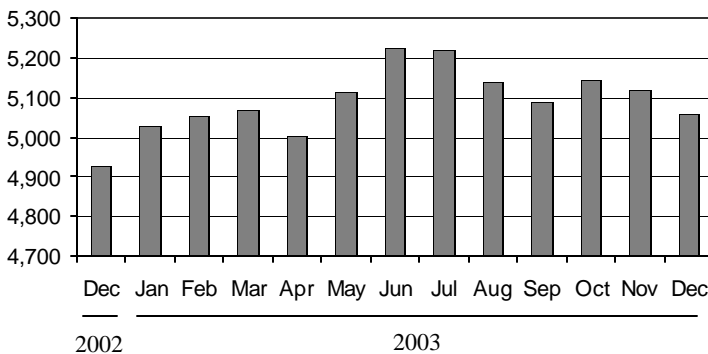
(A Publication of Michigan League for Human Services — Formerly Wages, Work, and Welfare)

Michigan Unemployment Rate,  
December 2002 - December 2003  
(not seasonally adjusted)



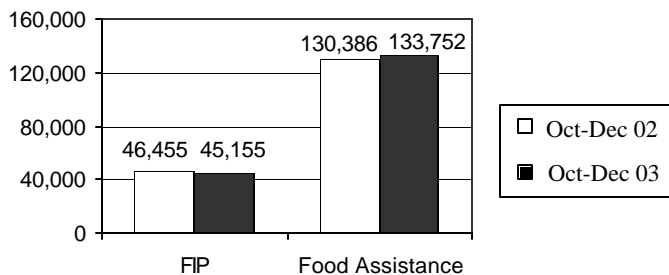
Source: Bureau of Labor Statistics

Michigan Labor Force, December 2002—December 2003  
(in thousands)



Source: Bureau of Labor Statistics

Family Independence Program (FIP) and Food Assistance Applications in Michigan,  
October-December 2002 and October-December 2003



Source: Michigan Family Independence Agency

## Michigan's Unemployment Rate Up Significantly in Past Year

### Unemployment

The number of unemployed workers in Michigan during the fourth quarter of 2003 increased by 23.3 percent from the fourth quarter of 2002, as the state-wide unemployment rate reached 7 percent. All but two counties experienced a rise in their unemployment rates, with Hillsdale and Clinton counties experiencing the largest increases at 54 and 53.4 percent respectively.

### Wages


In 2002, the twenty lowest paying jobs in Michigan paid 41-51 percent of the self-sufficiency wage for a single parent with two children (see insert). A total of 466,990 workers were employed in these jobs in that year.

### Public Assistance

The number of households receiving Food Assistance and FIP in the fourth quarter of 2003 increased by 13.7 and 10 percent respectively, over the fourth quarter of 2002. Sixty-five percent of FIP recipients who were expected to work had no earned income for at least one month during the fourth quarter of 2002, compared to 58 percent during the fourth quarter of 2003.

## About Our New Format:

The Michigan League for Human Services is now publishing the Economic Security Bulletin (formerly Wages, Work and Welfare) every three months. The bulletin will include expanded wage, employment and public assistance information for the preceding quarter, and will occasionally include special inserts with other data that we think you will find useful. Let us know what you think by calling (517) 487-5436 or by e-mailing [pruark@mlan.net](mailto:pruark@mlan.net).

 Prepared by: Michigan League for Human Services	Unemployment (data not seasonally adjusted)						Food Assistance Program					
	Unemployment Rate			Number Unemployed			Total Number of Applications			Average Number of Households Receiving Food Assistance Per Month		
	Qtr 4 2002	Qtr 4 2003	% change	Qtr 4 2002	Qtr 4 2003	% change	Qtr 4 2002	Qtr 4 2003	% change	Qtr 4 2002	Qtr 4 2003	% change
<b>Michigan<sup>1</sup></b>	<b>5.7</b>	<b>7.0</b>	<b>21.5</b>	<b>286,975</b>	<b>353,770</b>	<b>23.3</b>	<b>130,386</b>	<b>133,752</b>	<b>2.6</b>	<b>342,207</b>	<b>389,216</b>	<b>13.7</b>
Alcona	8.6	10.5	23.0	381	472	24.0	111	101	-9.0	401	448	11.7
Alger	5.5	6.3	15.2	233	275	18.1	76	76	0.0	267	261	-2.2
Allegan	5.4	6.0	10.5	3,067	3,471	13.2	1,123	1,076	-4.2	2,350	2,838	20.8
Alpena	7.5	7.9	5.4	1,165	1,251	7.4	475	448	-5.7	1,581	1,707	8.0
Antrim	7.5	9.3	23.5	774	1,017	31.3	251	274	9.2	512	576	12.6
Arenac	9.0	10.9	21.6	635	756	19.2	208	238	14.4	825	919	11.4
Baraga	8.2	9.0	9.8	323	371	14.8	109	118	8.3	271	322	18.8
Barry	4.3	4.6	6.2	1,377	1,505	9.3	523	502	-4.0	1,315	1,535	16.7
Bay	5.8	7.4	28.2	3,167	4,090	29.2	1,307	1,281	-2.0	4,391	5,038	14.7
Benzie	6.7	8.2	21.9	534	676	26.6	140	202	44.3	336	445	32.5
Berrien	5.4	7.1	31.7	4,232	5,738	35.6	2,585	2,746	6.2	7,143	7,797	9.2
Branch	5.5	6.4	17.1	1,294	1,582	22.3	682	579	-15.1	1,330	1,628	22.4
Calhoun	6.3	6.6	4.2	4,105	4,344	5.8	2,416	2,418	0.1	6,081	7,218	18.7
Cass	4.3	4.5	6.3	1,065	1,185	11.3	628	653	4.0	1,883	2,090	11.0
Charlevoix	7.0	8.3	18.7	918	1,129	23.1	**	**	**	576	**	**
Cheboygan	9.6	11.1	14.9	1,112	1,339	20.3	395	425	7.6	980	1,110	13.3
Chippewa	6.3	7.5	19.0	1,077	1,346	25.0	495	418	-15.6	1,226	1,347	9.9
Clare	8.2	9.8	19.5	866	1,110	28.2	538	433	-19.5	1,791	2,056	14.8
Clinton	2.9	4.5	53.4	1,070	1,664	55.5	371	347	-6.5	978	1,164	18.9
Crawford	7.5	8.4	11.9	404	474	17.3	212	233	9.9	618	697	12.8
Delta	6.5	8.0	24.2	1,235	1,591	28.8	492	463	-5.9	1,531	1,728	12.8
Dickinson	5.2	6.2	19.4	739	913	23.6	284	262	-7.7	783	895	14.3
Eaton	3.2	4.5	43.2	1,867	2,753	47.4	967	896	-7.3	2,168	2,668	23.0
Emmet	6.9	8.7	26.2	1,245	1,652	32.7	321	516	60.7	738	1,539	108.4
Genesee	7.6	8.8	15.4	13,922	16,564	19.0	8,713	8,804	1.0	22,496	25,407	12.9
Gladwin	7.9	11.0	39.1	717	1,077	50.2	361	326	-9.7	1,078	1,232	14.3
Gogebic	6.5	7.0	8.2	532	602	13.1	203	213	4.9	771	841	9.0
Gr. Traverse	4.9	6.1	25.3	2,178	2,861	31.3	782	1,027	31.3	1,669	2,445	46.5
Gratiot	5.1	6.7	32.0	1,003	1,366	36.2	486	475	-2.3	1,271	1,479	16.4
Hillsdale	5.4	8.3	54.0	1,263	2,068	63.8	494	515	4.3	1,255	1,476	17.6
Houghton	5.0	5.0	1.3	841	889	5.7	342	269	-21.3	1,346	1,442	7.1
Huron	8.0	8.6	7.1	1,380	1,436	4.1	299	266	-11.0	1,141	1,305	14.4
Ingham	3.8	5.5	42.6	5,875	8,612	46.6	4,314	4,498	4.3	9,755	10,989	12.6
Ionia	5.7	6.9	20.3	1,588	1,968	23.9	622	599	-3.7	1,736	2,048	18.0
Iosco	8.9	9.6	7.9	925	990	7.0	428	348	-18.7	1,247	1,529	22.6
Iron	5.5	6.3	15.2	287	342	19.2	156	135	-13.5	502	537	6.9
Isabella	3.1	4.1	32.3	1,031	1,405	36.3	582	582	0.0	1,822	2,078	14.1
Jackson	6.1	7.3	20.9	4,813	5,887	22.3	2,201	2,339	6.3	4,870	6,007	23.3
Kalamazoo	4.0	5.3	32.8	5,009	6,863	37.0	3,438	3,203	-6.8	8,180	9,340	14.2
Kalkaska	7.6	8.2	7.9	587	653	11.2	241	230	-4.6	636	736	15.7
Kent	5.8	7.2	23.6	18,820	24,117	28.1	7,426	7,744	4.3	18,378	21,597	17.5
Keweenaw	10.6	13.4	27.1	98	131	33.6	17	24	41.2	63	61	-2.7
Lake	8.9	11.1	25.6	329	439	33.5	252	267	6.0	874	941	7.6
Lapeer	7.0	7.5	7.6	3,050	3,365	10.3	658	615	-6.5	1,600	1,828	14.3
Leelanau	3.7	4.9	32.4	425	583	37.3	***	***	***	301	***	*

<sup>1</sup>In some cases the Michigan number is slightly different from the county total.

\*Percent change cannot be calculated.

\*\*Public assistance data for Missaukee is combined with and reported as Wexford.

\*\*\*Public Assistance data for Charlevoix is combined with and reported as Emmet (2003 only).

\*\*\*\*Public Assistance data for Leelanau is combined with and reported as Grand Traverse.

Data sources: Unemployment: Bureau of Labor Statistics, Local Area Unemployment Statistics; Public Assistance: Michigan Family Independence Agency.

## Family Independence Program (Cash Assistance)

Total Number of Applications			Average Number of Families Receiving Cash Assistance Per Month			Application Approvals : Unemployment Benefits Exhausted, Layoff or Discharge, Depleted Savings, Non-Exempt Property or Loss of Other Resources			Total Number of Denials		Income Exceeds Standards as Percent of Denials		Percent of Cases Without Earned Income, Out of Total Cases Expected to Work	
Qtr 4 2002	Qtr 4 2003	% change	Qtr 4 2002	Qtr 4 2003	% change	Qtr 4 2002	Qtr 4 2003	% change	Qtr 4 2002	Qtr 4 2003	Qtr 4 2002	Qtr 4 2003	Qtr 4 2002	Qtr 4 2003
<b>46,455</b>	<b>45,155</b>	<b>-2.8</b>	<b>70,379</b>	<b>77,822</b>	<b>10.6</b>	<b>2,768</b>	<b>2,496</b>	<b>-9.8</b>	<b>21,356</b>	<b>20,823</b>	<b>46.8</b>	<b>44.1</b>	<b>58%</b>	<b>65%</b>
40	35	-12.5	46	42	-8.0	0	0	*	17	16	64.7	50.0	90%	53%
30	26	-13.3	20	25	24.6	2	5	150.0	13	17	53.8	82.4	33%	0%
486	469	-3.5	326	372	14.3	40	84	110.0	241	210	47.7	41.4	44%	59%
180	140	-22.2	191	182	-5.1	49	28	-42.9	80	59	67.5	66.1	26%	45%
106	127	19.8	58	60	3.4	1	2	100.0	56	73	69.6	57.5	7%	27%
77	87	13.0	100	106	6.0	11	6	-45.5	27	41	37.0	46.3	77%	58%
49	52	6.1	37	58	56.3	8	0	-100.0	21	16	28.6	43.8	52%	51%
230	171	-25.7	192	233	21.4	52	51	-1.9	100	66	58.0	50.0	38%	44%
538	508	-5.6	675	713	5.6	54	40	-25.9	226	193	45.6	46.6	55%	53%
57	85	49.1	40	52	30.3	7	10	42.9	32	51	71.9	60.8	31%	51%
<b>1,078</b>	<b>1,140</b>	<b>5.8</b>	<b>1,522</b>	<b>1,466</b>	<b>-3.7</b>	<b>36</b>	<b>15</b>	<b>-58.3</b>	<b>499</b>	<b>543</b>	<b>46.5</b>	<b>42.2</b>	<b>35%</b>	<b>38%</b>
288	279	-3.1	201	265	31.9	33	23	-30.3	144	135	53.5	50.4	55%	66%
969	932	-3.8	1,155	1,365	18.2	48	83	72.9	475	433	56.4	48.7	53%	68%
268	257	-4.1	302	306	1.3	22	14	-36.4	93	104	50.5	51.9	19%	59%
**	**	**	**	**	**	**	**	**	32	**	56.3	**	17%	0%
124	183	47.6	121	116	-3.9	15	11	-26.7	69	65	52.2	46.2	58%	79%
184	166	-9.8	149	167	12.6	27	12	-55.6	75	70	44.0	52.9	61%	75%
233	193	-17.2	227	279	22.6	13	17	30.8	122	81	49.2	43.2	66%	60%
171	142	-17.0	110	123	11.8	7	6	-14.3	100	61	44.0	65.6	35%	44%
94	100	6.4	73	85	16.5	8	9	12.5	48	50	45.8	54.0	44%	44%
155	162	4.5	157	161	2.5	15	12	-20.0	66	72	59.1	45.8	16%	39%
112	108	-3.6	80	86	8.4	10	12	20.0	68	56	57.4	48.2	0%	23%
363	361	-0.6	308	356	15.7	24	24	0.0	195	163	53.3	50.9	32%	47%
108	155	43.5	124	110	-11.5	0	4	*	57	73	54.4	41.1	17%	37%
<b>3,522</b>	<b>3,309</b>	<b>-6.0</b>	<b>6,001</b>	<b>6,495</b>	<b>8.2</b>	<b>263</b>	<b>161</b>	<b>-38.8</b>	<b>1,615</b>	<b>1,586</b>	<b>42.5</b>	<b>38.8</b>	<b>48%</b>	<b>58%</b>
162	136	-16.0	131	133	1.3	7	9	28.6	90	65	56.7	44.6	50%	82%
78	64	-17.9	110	123	11.2	13	4	-69.2	27	19	55.6	73.7	49%	33%
250	335	34.0	179	198	10.4	14	19	35.7	136	167	70.6	61.7	42%	42%
229	230	0.4	157	233	48.6	11	19	72.7	115	129	55.7	46.5	48%	50%
233	241	3.4	179	208	16.2	26	22	-15.4	91	102	58.2	50.0	57%	47%
74	68	-8.1	107	102	-4.4	11	6	-45.5	16	16	81.3	43.8	28%	51%
106	69	-34.9	109	103	-5.2	27	6	-77.8	32	24	59.4	62.5	57%	72%
<b>1,548</b>	<b>1,441</b>	<b>-6.9</b>	<b>1,594</b>	<b>1,587</b>	<b>-0.5</b>	<b>58</b>	<b>50</b>	<b>-13.8</b>	<b>855</b>	<b>784</b>	<b>40.7</b>	<b>39.7</b>	<b>32%</b>	<b>46%</b>
321	285	-11.2	253	260	2.8	22	10	-54.5	123	107	57.7	57.0	57%	75%
190	141	-25.8	139	138	-0.5	4	6	50.0	67	72	59.7	45.8	63%	34%
54	47	-13.0	68	70	2.9	15	11	-26.7	14	12	78.6	41.7	19%	50%
232	246	6.0	240	272	13.2	19	10	-47.4	111	119	47.7	53.8	57%	73%
716	803	12.2	1,071	1,232	15.1	18	48	166.7	323	400	38.4	42.0	64%	74%
<b>1,277</b>	<b>1,218</b>	<b>-4.6</b>	<b>1,512</b>	<b>1,743</b>	<b>15.3</b>	<b>67</b>	<b>57</b>	<b>-14.9</b>	<b>544</b>	<b>467</b>	<b>44.9</b>	<b>38.3</b>	<b>64%</b>	<b>69%</b>
96	99	3.1	63	73	16.0	11	11	0.0	19	42	42.1	42.9	15%	43%
<b>2,920</b>	<b>2,821</b>	<b>-3.4</b>	<b>4,008</b>	<b>4,436</b>	<b>10.7</b>	<b>211</b>	<b>188</b>	<b>-10.9</b>	<b>1,288</b>	<b>1,283</b>	<b>49.8</b>	<b>45.4</b>	<b>45%</b>	<b>46%</b>
5	3	-40.0	4	2	-36.4	0	1	*	1	0	*	*	0%	0%
112	85	-24.1	145	161	10.8	11	5	-54.5	28	23	28.6	26.1	71%	62%
300	279	-7.0	228	273	19.6	20	9	-55.0	139	131	54.0	53.4	58%	59%
53	***	*	***	***	***	1	***	*	26	***	84.6	***	0%	0%

<sup>1</sup>In some cases the Michigan number is slightly different from the county total.

\*Percent change cannot be calculated.

\*\*Public assistance data for Missaukee is combined with and reported as Wexford.

\*\*\*Public Assistance data for Charlevoix is combined with and reported as Emmet (2003 only).

\*\*\*\*Public Assistance data for Leelanau is combined with and reported as Grand Traverse.

Data sources: Unemployment: Bureau of Labor Statistics, Local Area Unemployment Statistics; Public Assistance: Michigan Family Independence Agency.

County	Unemployment (data not seasonally adjusted)						Food Assistance Program					
	Unemployment Rate			Number Unemployed			Total Number of Applications			Average Number of Households Receiving Food Assistance Per Month		
	Qtr 4 2002	Qtr 4 2003	% change	Qtr 4 2002	Qtr 4 2003	% change	Qtr 4 2002	Qtr 4 2003	% change	Qtr 4 2002	Qtr 4 2003	% change
Lenawee	5.6	6.7	19.0	2,632	3,218	22.3	906	840	-7.3	2,389	2,723	14.0
Livingston	3.1	3.7	18.1	2,722	3,258	19.7	668	696	4.2	1,321	1,573	19.1
Luce	6.0	6.5	7.2	156	175	12.2	97	102	5.2	357	414	15.9
Mackinac	9.6	12.1	26.0	565	743	31.4	105	103	-1.9	204	239	17.0
Macomb	5.0	6.1	23.5	21,218	27,316	28.7	5,818	6,290	8.1	14,797	18,054	22.0
Manistee	7.1	8.1	13.1	805	962	19.5	316	285	-9.8	973	1,032	6.0
Marquette	5.4	5.5	1.2	1,764	1,866	5.8	547	570	4.2	1,886	2,110	11.9
Mason	12.3	11.7	-4.9	1,872	1,826	-2.4	350	446	27.4	1,115	1,284	15.1
Mecosta	4.7	6.2	31.7	879	1,203	36.8	575	552	-4.0	1,759	1,935	10.0
Menominee	6.2	7.0	13.4	714	832	16.6	292	237	-18.8	880	950	8.0
Midland	4.2	5.9	39.4	1,825	2,594	42.1	752	717	-4.7	2,081	2,522	21.2
Missaukee**	6.5	7.0	6.6	424	475	12.0	****	****	****	****	****	****
Monroe	5.3	6.5	24.1	3,861	4,942	28.0	1,219	1,223	0.3	3,067	3,518	14.7
Montcalm	7.5	8.4	12.1	1,913	2,226	16.4	716	715	-0.1	2,025	2,308	14.0
Montmorency	11.2	13.7	22.7	404	522	29.3	149	129	-13.4	544	550	1.2
Muskegon	9.1	9.0	-0.4	7,489	7,634	1.9	3,390	3,103	-8.5	9,317	10,433	12.0
Newaygo	8.1	8.7	7.4	1,770	1,974	11.5	593	621	4.7	1,884	2,144	13.8
Oakland	4.2	4.8	13.5	27,871	32,462	16.5	8,539	9,141	7.1	19,009	21,880	15.1
Oceana	8.3	8.8	6.0	1,169	1,236	5.7	435	414	-4.8	1,281	1,467	14.5
Ogemaw	7.2	8.5	18.1	676	839	24.1	279	258	-7.5	1,282	1,407	9.8
Ontonagon	6.5	7.7	18.4	180	219	21.7	68	51	-25.0	271	302	11.6
Osceola	6.8	8.3	22.1	699	873	24.9	317	339	6.9	1,023	1,202	17.5
Oscoda	12.0	13.9	15.8	367	429	17.0	145	139	-4.1	484	552	14.1
Otsego	6.6	7.3	10.6	886	1,020	15.1	292	279	-4.5	802	941	17.4
Ottawa	4.8	5.4	11.7	6,762	7,791	15.2	1,390	1,524	9.6	3,171	4,033	27.2
Presque Isle	8.5	10.9	28.1	517	681	31.7	132	118	-10.6	423	462	9.1
Roscommon	7.4	8.6	16.2	626	761	21.4	377	327	-13.3	1,419	1,577	11.2
Saginaw	6.6	8.4	27.3	6,643	8,603	29.5	3,564	3,677	3.2	10,702	11,953	11.7
Saint Clair	8.2	10.0	21.5	1,649	2,037	23.5	1,906	2,027	6.3	5,130	6,091	18.7
Saint Joseph	7.3	9.5	29.7	302	412	36.7	916	947	3.4	2,255	2,669	18.4
Sanilac	6.0	7.6	26.5	1,992	2,486	24.8	534	528	-1.1	1,607	1,939	20.7
Schoolcraft	7.1	8.5	20.2	5,790	7,180	24.0	129	95	-26.4	424	435	2.6
Shiawassee	5.7	7.2	26.9	1,760	2,282	29.6	796	805	1.1	2,148	2,550	18.7
Tuscola	7.5	8.4	11.6	2,091	2,431	16.3	555	502	-9.5	1,667	1,837	10.2
Van Buren	5.9	7.6	29.0	2,100	2,811	33.9	1,465	1,400	-4.4	3,487	3,920	12.4
Washtenaw	2.4	3.0	25.0	4,315	5,489	27.2	2,398	2,541	6.0	5,589	6,512	16.5
Wayne	6.9	8.3	20.3	62,153	77,497	24.7	41,953	44,211	5.4	112,383	124,142	10.5
Wexford**	7.5	8.0	7.6	1,077	1,215	12.8	622	616	-1.0	1,988	2,213	11.3

## FACT

The 2003 poverty threshold for a single parent with two children is \$14,824 per year. The self-sufficiency income (calculated by Michigan League for Human Services) is \$34,485.

<sup>1</sup>In some cases the Michigan number is slightly different from the county total.

\*Percent change cannot be calculated.

\*\*Public assistance data for Missaukee is combined with and reported as Wexford.

\*\*\*Public Assistance data for Charlevoix is combined with and reported as Emmet (2003 only).

\*\*\*\*Public Assistance data for Leelanau is combined with and reported as Grand Traverse.

Data sources: Unemployment: Bureau of Labor Statistics, Local Area Unemployment Statistics; Public Assistance: Michigan Family Independence Agency.

Family Independence Program (Cash Assistance)

Total Number of Applications			Average Number of Families Receiving Cash Assistance Per Month			Application Approvals : Unemployment Benefits Exhausted, Layoff or Discharge, Depleted Savings, Non-Exempt Property or Loss of Other Resources			Total Number of Denials		Income Exceeds Standards as Percent of Denials		Percent of Cases Without Earned Income, Out of Total Cases Expected to Work	
Qtr 4 2002	Qtr 4 2003	% change	Qtr 4 2002	Qtr 4 2003	% change	Qtr 4 2002	Qtr 4 2003	% change	Qtr 4 2002	Qtr 4 2003	Qtr 4 2002	Qtr 4 2003	Qtr 4 2002	Qtr 4 2003
398	330	-17.1	397	382	-3.7	11	8	-27.3	208	161	51.0	57.1	28%	33%
256	252	-1.6	140	150	7.4	15	14	-6.7	164	151	65.2	53.0	39%	41%
41	48	17.1	49	46	-6.8	2	5	150.0	19	27	100.0	48.1	34%	61%
42	39	-7.1	29	28	-3.4	3	9	200.0	25	19	60.0	57.9	33%	17%
1,960	2,002	2.1	1,942	2,322	19.6	61	106	73.8	1,024	1,015	51.0	52.6	55%	63%
140	123	-12.1	111	121	9.0	21	14	-33.3	52	43	75.0	58.1	39%	58%
187	165	-11.8	209	249	19.2	20	10	-50.0	66	51	50.0	43.1	49%	65%
157	162	3.2	170	193	13.5	27	17	-37.0	39	55	41.0	60.0	44%	59%
234	216	-7.7	193	207	7.1	6	3	-50.0	114	95	57.0	45.3	50%	65%
121	95	-21.5	105	93	-11.1	9	10	11.1	35	33	54.3	39.4	57%	78%
286	264	-7.7	254	310	22.0	24	29	20.8	159	137	61.0	60.6	41%	44%
****	****	****	****	****	****	****	****	****	****	****	****	****	****	****
530	510	-3.8	557	596	6.9	22	31	40.9	273	241	45.1	46.1	48%	59%
306	322	5.2	267	294	10.3	26	43	65.4	124	145	55.6	50.3	65%	64%
60	46	-23.3	50	47	-6.6	15	5	-66.7	26	21	69.2	57.1	39%	33%
1,324	1,199	-9.4	2,411	2,600	7.8	112	67	-40.2	474	413	55.3	49.9	64%	71%
235	225	-4.3	277	303	9.4	25	14	-44.0	62	75	35.5	25.3	41%	64%
2,513	2,678	6.6	2,942	3,301	12.2	78	110	41.0	1,526	1,607	50.7	45.7	52%	62%
204	206	1.0	257	300	16.5	30	45	50.0	61	64	62.3	53.1	57%	63%
125	105	-16.0	146	144	-1.1	24	21	-12.5	33	35	51.5	54.3	24%	53%
27	21	-22.2	37	38	2.7	7	2	-71.4	8	8	100.0	50.0	10%	33%
163	168	3.1	135	164	21.5	9	16	77.8	70	55	57.1	69.1	42%	57%
49	56	14.3	62	57	-8.1	14	11	-21.4	15	22	46.7	72.7	0%	50%
133	110	-17.3	89	87	-2.6	4	6	50.0	64	62	60.9	54.8	29%	67%
417	476	14.1	413	469	13.5	16	16	0.0	136	201	26.5	46.3	70%	67%
38	43	13.2	35	35	1.9	3	2	-33.3	18	18	44.4	33.3	28%	0%
172	138	-19.8	172	170	-1.4	20	5	-75.0	55	52	52.7	59.6	27%	38%
1,351	1,350	-0.1	3,175	3,149	-0.8	72	102	41.7	581	615	53.2	43.3	46%	48%
781	722	-7.6	890	1,072	20.5	73	52	-28.8	306	300	44.8	40.7	59%	64%
409	382	-6.6	304	364	19.9	10	27	170.0	203	183	58.1	45.4	44%	74%
183	182	-0.5	210	241	14.4	51	42	-17.6	86	57	45.3	54.4	64%	54%
40	34	-15.0	44	55	25.8	4	3	-25.0	12	5	41.7	100.0	55%	55%
353	343	-2.8	276	276	-0.1	14	14	0.0	174	171	47.7	45.0	32%	41%
255	219	-14.1	232	236	1.6	33	21	-36.4	108	102	55.6	48.0	40%	57%
613	623	1.6	642	656	2.2	41	44	7.3	278	272	48.6	45.6	56%	52%
761	823	8.1	1,013	1,181	16.5	15	13	-13.3	396	396	45.7	37.1	64%	64%
12,811	12,411	-3.1	29,373	33,043	12.5	521	430	-17.5	5,725	5,605	38.8	38.9	63%	71%
276	269	-2.5	259	275	6.2	19	9	-52.6	121	115	47.9	47.0	63%	61%

**FACT** The maximum cash assistance payment for a family of three in Wayne County— \$459 per month—has not changed since 1993.

<sup>1</sup>In some cases the Michigan number is slightly different from the county total.

\*Percent change cannot be calculated.

\*\*Public assistance data for Missaukee is combined with and reported as Wexford.

\*\*\*Public Assistance data for Charlevoix is combined with and reported as Emmet (2003 only).

\*\*\*\*Public Assistance data for Leelanau is combined with and reported as Grand Traverse.

Data sources: Unemployment: Bureau of Labor Statistics, Local Area Unemployment Statistics; Public Assistance: Michigan Family Independence Agency.

**Employment Trends by Selected Industries in Michigan**  
(data not seasonally adjusted)

Industry	Avg 2002 Qtr 4	Avg 2003 Qtr 4	% Change	Industry	Avg 2002 Qtr 4	Avg 2003 Qtr 4	% Change
<b>TOTAL NONFARM</b>	451,853	444,520	-1.6	<b>Trade Transportation &amp; Utilities</b>	85,427	84,783	-0.8
<b>TOTAL PRIVATE</b>	380,507	374,980	-1.5	Wholesale Trade	17,373	17,677	1.7
<b>GOODS PRODUCING</b>	96,897	93,683	-3.4	Retail Trade	54,797	54,500	-0.5
<b>SERVICE PROVIDING</b>	354,957	350,837	-1.2	Motor Vehicle and Parts Dealers	6,323	6,203	-1.9
<b>NATURAL RESOURCES &amp; MINING</b>	880	793	-10.9	Furniture and Home Furnishings	2,077	2,097	1.0
<b>Construction</b>	20,383	20,297	-0.4	Electronics and Appliance	1,707	1,547	-10.3
Construction of Buildings	4,787	4,753	-0.7	Building Material and Supplies Dealers	4,577	4,367	-4.8
Heavy and Civil Engineering	1,900	1,690	-12.4	Food and Beverage Stores	8,990	9,063	0.8
Specialty Trade Contractors	13,697	13,853	1.1	Health and Personal Care	3,267	3,473	6.0
<b>Manufacturing</b>	75,633	72,593	-4.2	Gasoline Stations	2,770	2,623	-5.6
Wood Product Manufacturing	1,133	1,077	-5.3	Clothing/Clothing Accessories	3,980	4,133	3.7
Nonmetallic Mineral Products	1,817	1,730	-5.0	Sporting Goods, Hobby, Book, Music Stores	2,650	2,627	-0.9
Primary Metal Manufacturing	2,900	2,850	-1.8	General Merchandise Stores	13,540	12,853	-5.3
Fabricated Metal Product	8,270	8,007	-3.3	Miscellaneous Retail	3,413	3,523	3.1
Machinery Manufacturing	7,810	7,673	-1.8	Transportation and Warehousing	13,257	12,607	-5.2
Computer and Electronic Products	2,230	2,063	-8.1	Rail Transportation	530	540	1.9
Electrical Equipment and Appliances	1,457	1,443	-0.9	Truck Transportation	3,680	3,527	-4.3
Motor Vehicle Manufacturing	8,083	7,630	-5.9	Warehousing and Storage	1,633	1,527	-7.0
Motor Vehicle Parts Manufacturing	18,873	17,857	-5.7	<b>Information</b>	7,413	7,387	-0.4
Furniture and Related Products	2,983	2,810	-6.2	Publishing Industries	2,680	2,673	-0.2
Miscellaneous Manufacturing	2,217	2,120	-4.6	Telecommunications	2,467	2,283	-8.0
Medical Equipment and Supplies	1,140	1,077	-5.9	<b>Financial Activities</b>	21,560	21,813	1.2
Food Manufacturing	3,480	3,417	-1.9	Finance and Insurance	16,297	16,580	1.7
Leather and Allied Products	170	117	-45.7	Real Estate	3,347	3,343	-0.1
Paper Manufacturing	1,607	1,550	-3.7	Rental and Leasing Services	1,757	1,603	-9.6
Printing and Related Support Activities	1,977	1,940	-1.9				
Chemical Manufacturing	3,117	2,957	-5.4				
Plastics and Rubber Products	4,423	4,170	-6.1				

Source: Michigan Department of Career Development/ESA/Office of Labor Market Information, Current Employment Statistics Section - (800) 225-3732

**Employment Trends by Selected Industries in Michigan**  
(data not seasonally adjusted)

Industry	Avg 2002 Qtr 4	Avg 2003 Qtr 4	% Change	Industry	Avg 2002 Qtr 4	Avg 2003 Qtr 4	% Change
<b>Professional &amp; Business Services</b>	59,330	57,483	-3.2	<b>Leisure and Hospitality</b>	38,210	37,830	-1.0
Legal Services	2,920	2,800	-4.3	Performing Arts Spectator Activities	947	937	-1.1
Accounting & Tax Preparation	3,087	2,887	-6.9	Amusement, Gambling and Recreation	4,480	4,680	4.3
Architectural Engineering	7,427	7,540	1.5	Accommodation	2,820	2,903	2.9
Computer Systems Design	4,070	3,730	-9.1	Food Services and Drinking	29,730	29,093	-2.2
Advertising and Related	1,647	1,673	1.6	<b>Other Services</b>	17,707	17,073	-3.7
Management of Companies	6,940	6,647	-4.4	Repair and Maintenance	4,410	4,160	-6.0
Administrative and Support Services	26,660	25,477	-4.6	Automotive Repair and Maintenance	3,380	3,167	-6.7
<b>Educational and Health Services</b>	53,963	54,927	1.8	Personal and Laundry Services	4,237	4,250	0.3
Educational Services	7,687	8,173	6.0	Personal Care Services	1,997	1,977	-1.0
Elementary and Secondary Schools	2,167	2,247	3.6	Drycleaning and Laundry	1,150	1,140	-0.9
Colleges, Universities, Professional Schools	3,713	3,867	4.0	<b>Religious Organizations</b>	5,553	5,180	-7.2
Local Government Educational Services	29,273	28,740	-1.9	<b>Government</b>	71,347	69,540	-2.6
Local Government Elementary and Secondary Schools	26,927	26,490	-1.6	Federal Government	5,800	5,703	-1.7
Local Government Junior Colleges	2,273	2,213	-2.7	Federal Government Hospital Services	587	617	4.9
Health Care and Social Assistance	46,277	46,753	1.0	U.S. Postal Service	3,013	2,980	-1.1
Ambulatory Health Care Services	15,223	15,483	1.7	State Government	17,653	17,000	-3.8
Offices of Physicians	6,020	6,093	1.2	State Government Educational Services	10,743	10,183	-5.5
Offices of Dentists	3,083	3,113	1.0	State Government Hospital Services	1,403	1,457	3.7
Offices of Other Health Professionals	1,727	1,733	0.4	Local Government	47,893	46,837	-2.3
Home Health Care Service	2,173	2,263	4.0				
Hospitals	17,567	17,913	1.9				
Nursing and Residential Care	8,833	8,880	0.5				
Nursing Care Facilities	4,070	4,033	-0.9				
Community Care Facilities	2,447	2,530	3.3				
Social Assistance	4,653	4,477	-3.9				
Individual and Family Services	1,960	1,957	-0.2				

Source: Michigan Department of Career Development/ESA/Office of Labor Market Information, Current Employment Statistics Section - (800) 225-3732

Twenty Lowest Wage Occupations in Michigan by Region, 2002

Occupational Title	Median Hourly Wage (estimated)				
	Lower Peninsula			Upper Peninsula	Statewide
	Southern	Northeast	Northwest		
Waiters and Waitresses .....	\$6.40	\$6.51	\$7.96	\$6.38	<b>\$6.84</b>
Shampooers .....	**	**	**	**	<b>\$6.91</b>
Dining Room and Cafeteria Attendants and Bartender Helpers .....	\$6.88	\$6.54	\$6.87	\$6.61	<b>\$7.04</b>
Hosts and Hostesses, Restaurant, Lounge, and Coffee Shop .....	\$6.46	\$7.38	\$7.55	\$6.85	<b>\$7.19</b>
Cooks, Fast Food .....	\$6.79	\$6.53	\$6.82	\$7.59	<b>\$7.22</b>
Farmworkers and Laborers, Crop, Nursery, and Greenhouse .....	\$7.56	\$6.89	\$8.83	**	<b>\$7.31</b>
Counter Attendants, Cafeteria, Food Concession, Coffee Shop .....	\$7.92	\$7.12	\$6.89	\$7.05	<b>\$7.39</b>
Combined Food Preparation and Serving Workers, (incl. fast food) .....	\$7.01	\$6.87	\$7.23	\$7.01	<b>\$7.56</b>
Dishwashers .....	\$6.71	\$6.71	\$7.35	\$6.52	<b>\$7.57</b>
Bartenders .....	\$8.07	\$7.15	\$9.01	\$7.39	<b>\$7.62</b>
Ushers, Lobby Attendants, and Ticket Takers .....	\$6.59	**	**	**	<b>\$7.77</b>
Cooks, Short Order .....	\$8.05	\$8.50	\$9.42	\$7.57	<b>\$8.02</b>
Cashiers .....	\$7.36	\$6.97	\$8.13	\$7.22	<b>\$8.10</b>
Locker Room, Coatroom, and Dressing Room Attendants .....	**	**	\$7.98	**	<b>\$8.18</b>
Amusement and Recreation Attendants .....	\$8.75	\$8.28	\$7.68	\$7.06	<b>\$8.33</b>
Personal and Home Care Aides .....	\$8.10	\$8.00	\$8.92	\$7.95	<b>\$8.38</b>
Parking Lot Attendants .....	**	**	\$7.81	**	<b>\$8.45</b>
Maids and Housekeeping Cleaners .....	\$8.18	\$7.62	\$8.07	\$7.59	<b>\$8.47</b>
Hotel, Motel, and Resort Desk Clerks .....	\$7.61	\$7.41	\$8.85	\$7.93	<b>\$8.47</b>
Packers and Packagers, Hand .....	\$8.60	\$7.78	\$8.31	\$6.97	<b>\$8.50</b>

FACT

Annual earning for a full time worker at the minimum wage (\$5.15 per hour) is only 72 percent of the 2003 poverty level for a family of three.



\*\*Information not available

Produced by Michigan League for Human Services

Source: U.S. Department of Labor, Bureau of Labor Statistics, Occupational Employment and Wage Estimates



Twenty Lowest Wage Occupations in Michigan, 2001 and 2002

Occupational Title	2001			2002		
	Number of Workers	Median Hourly Wage	% of Self-Sufficiency Wage <sup>1</sup>	Number of Workers	Median Hourly Wage	% of Self-Sufficiency Wage <sup>1</sup>
Waiters and Waitresses .....	71,150	\$6.29	38%	72,350	\$6.84	41%
Shampooers .....	130	\$6.83	41%	300	\$6.91	42%
Dining Room/ Cafeteria Attendants and Bartender Helpers .....	10,800	\$6.58	40%	13,450	\$7.04	42%
Hosts and Hostesses, Restaurant, Lounge, and Coffee Shop .....	9,820	\$6.68	40%	10,220	\$7.19	43%
Cooks, Fast Food .....	35,720	\$6.65	40%	29,560	\$7.22	44%
Farmworkers and Laborers, Crop, Nursery, and Greenhouse .....	1,640	\$9.01	54%	N/A	\$7.31	44%
Counter Attendants, Cafeteria, Food Concession, Coffee Shop .....	12,860	\$6.85	41%	12,070	\$7.39	45%
Combined Food Preparation and Serving Workers, (incl. fast food) .....	74,190	\$6.95	42%	75,340	\$7.56	46%
Dishwashers .....	19,670	\$7.51	45%	19,170	\$7.57	46%
Bartenders .....	17,120	\$7.00	42%	17,230	\$7.62	46%
Ushers, Lobby Attendants, Ticket Takers .....	3,680	\$7.05	43%	2,830	\$7.77	47%
Cooks, Short Order .....	8,320	\$8.42	51%	7,660	\$8.02	48%
Cashiers .....	123,490	\$7.83	47%	120,640	\$8.10	49%
Locker, Coat, Dressing Room Attendants .....	1,340	\$8.28	50%	1,220	\$8.18	49%
Amusement and Recreation Attendants .....	6,910	\$8.01	48%	6,960	\$8.33	50%
Personal and Home Care Aides .....	15,510	\$8.27	50%	14,640	\$8.38	51%
Parking Lot Attendants .....	3,160	\$7.55	46%	1,880	\$8.45	51%
Maids and Housekeeping Cleaners .....	25,590	\$8.35	50%	24,690	\$8.47	51%
Hotel, Motel, and Resort Desk Clerks .....	5,070	\$8.10	49%	5,040	\$8.47	51%
Packers and Packers, Hand .....	31,880	\$7.24	44%	31,740	\$8.50	51%

<sup>1</sup>A self-sufficiency wage is the wage needed by a family to meet all of its needs without public or private support. The figure used for these percentages is \$16.58, the self-sufficiency wage for a single parent with two children. For more information see *Economic Self-Sufficiency in Michigan: A Benchmark for Family Well-Being* (March 2004), published by Michigan League for Human Services.

N/A=NotAvailable

Produced by Michigan League for Human Services

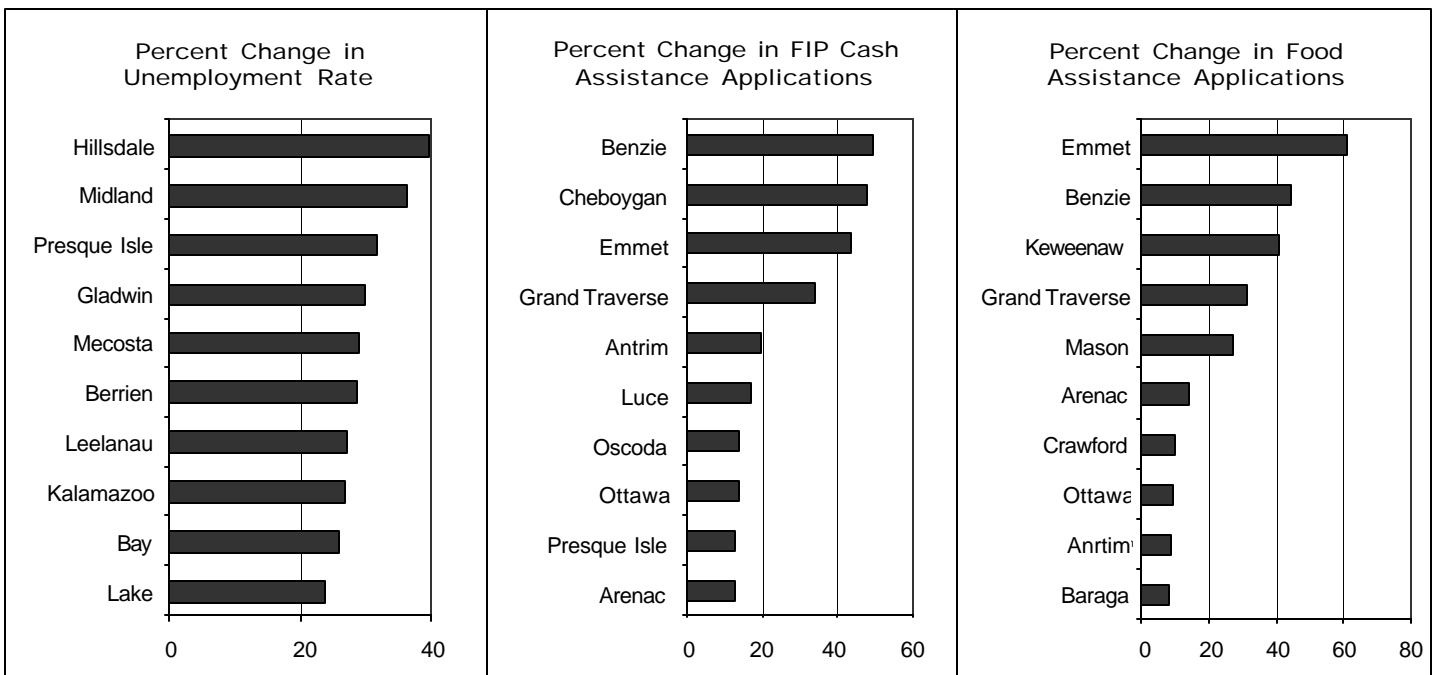
Source: U.S. Department of Labor, Bureau of Labor Statistics, Occupational Employment and Wage Estimates



**Michigan League for Human Services**  
 1115 South Pennsylvania Avenue, Suite 202  
 Lansing, MI 48912-1658  
 (517) 487-5436 — Fax (517) 371-4546  
 Web site: www.milhs.org  
*A United Way Agency*

*Nonprofit  
 Organization*  
 U.S. Postage  
**Paid**  
 Lansing, MI  
 Permit #1421

Percentage Change in Michigan Counties With Largest Increases  
 Fourth Quarter 2002 — Fourth Quarter 2003



Sources: Unemployment: Bureau of Labor Statistics, Local Area Unemployment Statistics; Public Assistance: Michigan Family Independence Agency