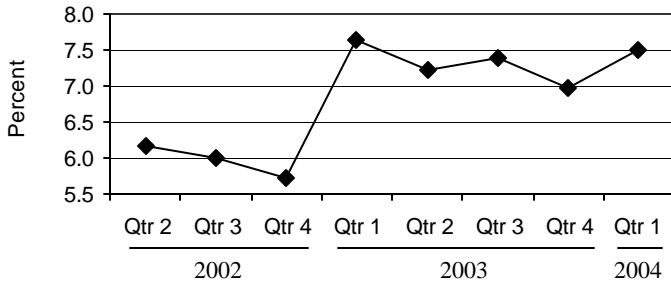




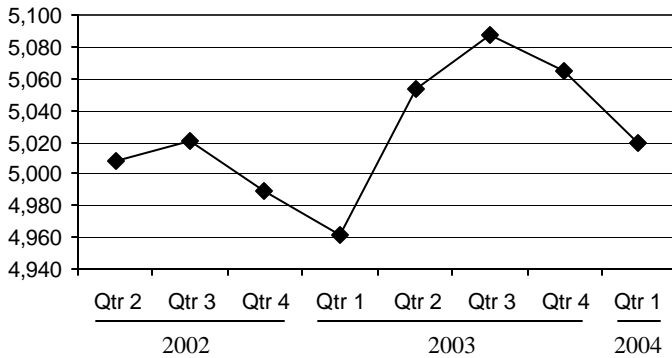
(A Publication of Michigan League for Human Services — Formerly Wages, Work, and Welfare)

Michigan Unemployment Rate
Over the Past Two Years
(not seasonally adjusted)



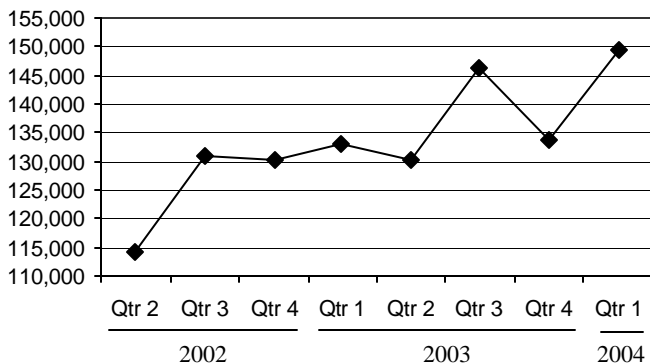
Source: Bureau of Labor Statistics

Michigan Labor Force Over the Past Two Years
(in thousands)



Source: Bureau of Labor Statistics

Food Assistance Applications in Michigan Over
the Past Two Years



Source: Michigan Family Independence Agency

Food Assistance Applications at Their Highest in Recent Years

Unemployment


The first three months (Quarter 1) of 2004 saw a .5 percentage point increase in the unemployment rate from the preceding three months. While the unemployment rate during Quarter 1 of this year is slightly lower than Quarter 1 of last year, the chart at the top left shows that during the past two years the unemployment rate, after declining slightly in the last 3 quarters of 2002, jumped to 7.6 percent during the first part of 2003 and has stayed between 7 and 7.5 percent ever since.

Public Assistance

Quarter 1 of 2004 saw an increase in applications for both Food Assistance and FIP Cash Assistance over the previous quarter, with Food Assistance applications rising by twelve percent (see chart at bottom left). The number of Food Assistance applications for Quarter 1 (146,815) marks the highest number of applications in at least ten years; after fluctuating since early 1994 between 95,000 and 125,000, in Quarter 3 of 2002 the number of applications reached 130,000 and has stayed above that level ever since. This may be due to a combination of several factors, including the downturn in Michigan's economy, the introduction of the Michigan Bridge Card (the electronic benefit transfer card that replaced paper stamps) and the waiving of the three-month time limit for childless adults to receive Food Assistance.

Sectoral Trends

Most manufacturing sectors saw decreases in the numbers of people employed, with the furniture, wood products, food manufacturing and motor vehicle industries seeing particularly sharp decreases (more than 5 percent). Accounting and tax preparation accounted for the largest decrease in white-collar employment (nearly 22 percent). The amusement, gambling and recreation sector, educational services, and heavy and civil engineering were the only sectors to experience significant increases in employment. (See Table on pages 6 and 7.)

 Prepared by: Michigan League for Human Services	Unemployment (data not seasonally adjusted)						Food Assistance Program					
	Unemployment Rate			Number Unemployed			Total Number of Applications			Average Number of Households Receiving Food Assistance Per Month		
	Qtr 1 2003	Qtr 1 2004	% change	Qtr 1 2003	Qtr 1 2004	% change	Qtr 1 2003	Qtr 1 2004	% change	Qtr 1 2003	Qtr 1 2004	% change
Michigan¹	7.6	7.5	-1.7	378,270	376,774	-0.4	133,075	146,815	10.3	361,098	399,297	10.6
Alcona	14.5	12.9	-11.0	618	559	-9.6	97	120	23.7	439	464	5.6
Alger	8.7	8.1	-6.9	379	353	-6.9	55	88	60.0	266	279	5.1
Allegan	7.6	7.2	-4.4	4,261	4,132	-3.0	994	1,086	9.3	2,564	2,952	15.1
Alpena	11.1	9.8	-11.7	1,732	1,534	-11.4	517	552	6.8	1,695	1,798	6.1
Antrim	10.4	10.3	-1.3	1,103	1,096	-0.7	270	245	-9.3	573	635	10.9
Arenac	13.9	13.8	-0.7	940	938	-0.2	240	259	7.9	903	967	7.1
Baraga	11.2	11.9	6.5	449	490	9.1	81	132	63.0	292	345	18.2
Barry	6.0	5.4	-11.0	1,881	1,696	-9.9	552	589	6.7	1,410	1,588	12.6
Bay	8.8	9.1	3.4	4,634	4,815	3.9	1,203	1,518	26.2	4,671	5,213	11.6
Benzie	12.4	10.5	-15.1	1,003	867	-13.6	185	251	35.7	350	484	38.4
Berrien	7.5	7.7	2.2	5,720	6,291	10.0	2,425	2,922	20.5	7,421	7,979	7.5
Branch	7.2	6.9	-4.2	1,649	1,651	0.1	614	609	-0.8	1,471	1,643	11.7
Calhoun	7.8	7.3	-7.2	5,116	4,809	-6.0	2,495	2,833	13.5	6,567	7,486	14.0
Cass	6.0	5.2	-12.8	1,521	1,350	-11.2	639	715	11.9	1,980	2,121	7.2
Charlevoix**	10.6	9.8	-7.2	1,423	1,339	-5.9	**	**	**	653	**	**
Cheboygan	21.1	19.1	-9.5	2,461	2,240	-9.0	379	396	4.5	1,063	1,208	13.6
Chippewa	10.7	10.4	-3.4	1,861	1,828	-1.8	401	457	14.0	1,298	1,391	7.1
Clare	12.5	12.6	0.5	1,341	1,445	7.7	468	494	5.6	1,919	2,113	10.1
Clinton	4.5	4.7	2.9	1,618	1,702	5.2	399	417	4.5	1,050	1,180	12.4
Crawford	10.5	10.1	-3.8	575	553	-3.8	223	248	11.2	660	713	8.0
Delta	10.5	9.8	-6.4	1,976	1,870	-5.4	441	510	15.6	1,663	1,822	9.6
Dickinson	7.5	6.9	-8.0	1,077	1,008	-6.4	318	322	1.3	825	901	9.3
Eaton	4.4	4.7	6.1	2,578	2,788	8.1	889	1,037	16.6	2,311	2,722	17.8
Emmet**	11.0	11.4	3.3	2,023	2,120	4.8	320	525	64.1	798	1,620	102.9
Genesee	9.9	9.9	-0.7	18,380	18,244	-0.7	9,078	9,751	7.4	23,570	25,942	10.1
Gladwin	12.5	13.0	3.5	1,150	1,256	9.3	311	358	15.1	1,159	1,316	13.6
Gogebic	7.8	7.0	-10.6	655	587	-10.3	178	221	24.2	804	873	8.6
Gr. Traverse**	7.8	7.7	-1.7	3,479	3,530	1.5	897	1,150	28.2	1,839	2,587	40.7
Gratiot	7.2	7.7	6.0	1,439	1,581	9.8	480	483	0.6	1,360	1,513	11.3
Hillsdale	7.0	8.3	19.1	1,608	1,986	23.5	418	508	21.5	1,333	1,580	18.5
Houghton	8.2	6.7	-18.2	1,415	1,169	-17.4	331	316	-4.5	1,418	1,449	2.2
Huron	11.8	10.3	-13.0	2,019	1,793	-11.2	299	291	-2.7	1,269	1,378	8.6
Ingham	5.2	5.6	7.7	7,920	8,703	9.9	4,337	5,011	15.5	10,250	11,351	10.7
Ionia	8.0	7.5	-6.7	2,171	2,110	-2.8	617	669	8.4	1,865	2,138	14.7
Iosco	13.6	12.4	-9.0	1,362	1,261	-7.4	374	388	3.7	1,380	1,597	15.7
Iron	8.9	8.6	-3.7	481	477	-0.9	173	146	-15.6	561	546	-2.7
Isabella	5.2	5.0	-4.5	1,735	1,683	-3.0	534	643	20.4	1,934	2,157	11.6
Jackson	8.3	7.6	-8.8	6,475	6,029	-6.9	2,441	2,553	4.6	5,299	6,200	17.0
Kalamazoo	5.0	5.4	7.9	6,445	7,064	9.6	3,234	3,587	10.9	8,774	9,615	9.6
Kalkaska	11.6	10.6	-8.3	885	837	-5.5	244	273	11.9	735	807	9.8
Kent	7.6	7.3	-4.8	24,681	23,884	-3.2	7,740	8,852	14.4	19,622	22,008	12.2
Keweenaw	15.4	15.0	-2.8	141	140	-0.5	12	21	75.0	66	79	20.3
Lake	12.7	13.7	7.9	462	504	8.9	242	241	-0.4	907	977	7.8
Lapeer	10.5	10.8	2.9	4,735	4,891	3.3	645	709	9.9	1,760	1,936	10.0
Leelanau**	7.1	6.3	-12.1	802	725	-9.6	**	**	**	**	**	**

Correction: In the March issue of the *Economic Security* bulletin, figures for the "Total Number of Applications" for the Food Assistance and Family Independence programs appeared under the heading "Average Number of Applications per month." We apologize for the error.

¹In some cases the Michigan number is slightly different from the county total.

*Percent change cannot be calculated.

**Public Assistance data for Charlevoix is combined with and reported as Emmet, Public Assistance data for Leelanau is combined with and reported as Grand Traverse, and Public Assistance data for Missaukee is combined with and reported as Wexford.

Data sources: Unemployment: Bureau of Labor Statistics, Local Area Unemployment Statistics; Public Assistance: Michigan Family Independence Agency.

Family Independence Program (Cash Assistance)

Total Number of Applications			Average Number of Families Receiving Cash Assistance Per Month			Application Approvals : Unemployment Benefits Exhausted, Layoff or Discharge, Depleted Savings, Non-Exempt Property or Loss of Other Resources			Total Number of Denials		Income Exceeds Standards as Percent of Denials		Percent of Cases Without Earned Income, Out of Total Cases Expected to Work	
Qtr 1 2003	Qtr 1 2004	% change	Qtr 1 2003	Qtr 1 2004	% change	Qtr 1 2003	Qtr 1 2004	% change	Qtr 1 2003	Qtr 1 2004	Qtr 1 2003	Qtr 1 2004	Qtr 1 2003	Qtr 1 2004
46,302	48,437	4.6	73,936	78,226	5.8	2,801	2,571	-8.2	20,426	20,314	44.6	42.5	62%	67%
41	41	0.0	52	46	-10.9	0	0	*	11	19	36.4	52.6	86%	93%
26	41	57.7	24	31	27.4	4	8	100.0	10	19	60.0	57.9	0%	52%
453	427	-5.7	372	385	3.3	43	61	41.9	237	187	47.3	47.6	53%	65%
186	182	-2.2	197	188	-4.7	33	37	12.1	90	77	70.0	48.1	29%	37%
108	98	-9.3	67	69	3.0	1	1	0.0	51	55	78.4	70.9	16%	7%
86	83	-3.5	106	114	7.9	10	13	30.0	56	31	55.4	32.3	74%	60%
43	52	20.9	50	55	11.4	4	0	-100.0	9	9	33.3	33.3	27%	47%
228	214	-6.1	226	229	1.6	47	49	4.3	114	82	50.9	52.4	47%	53%
511	542	6.1	715	743	4.0	42	37	-11.9	222	190	43.2	36.3	56%	58%
56	81	44.6	46	57	24.1	4	9	125.0	34	51	70.6	56.9	42%	52%
1,038	1,162	11.9	1,556	1,483	-4.7	48	29	-39.6	471	507	46.3	41.8	36%	52%
251	234	-6.8	265	277	4.8	51	29	-43.1	106	113	58.5	50.4	60%	64%
969	1,058	9.2	1,268	1,400	10.4	71	64	-9.9	452	444	47.8	46.8	60%	70%
277	229	-17.3	338	323	-4.4	24	8	-66.7	81	103	44.4	46.6	30%	62%
**	**	**	**	**	**	**	**	**	35	**	65.7	**	28%	0%
147	158	7.5	123	150	22.0	7	10	42.9	63	82	68.3	61.0	77%	82%
179	198	10.6	178	180	1.5	21	23	9.5	58	62	43.1	33.9	62%	75%
194	182	-6.2	254	278	9.4	15	14	-6.7	98	90	35.7	44.4	61%	59%
156	178	14.1	111	130	16.5	12	18	50.0	83	92	59.0	57.6	54%	50%
88	95	8.0	81	93	14.4	9	8	-11.1	36	44	58.3	43.2	36%	49%
149	165	10.7	150	162	8.0	9	6	-33.3	78	72	53.8	52.8	24%	36%
132	123	-6.8	84	78	-6.8	13	12	-7.7	77	59	61.0	49.2	6%	36%
348	414	19.0	323	366	13.1	18	19	5.6	184	191	44.6	46.6	48%	53%
101	158	56.4	133	120	-9.5	0	5	*	56	79	66.1	53.2	0%	39%
3,620	3,527	-2.6	6,219	6,546	5.3	179	190	6.1	1,630	1,448	40.7	35.6	55%	61%
139	132	-5.0	146	136	-6.4	12	7	-41.7	67	56	46.3	32.1	38%	60%
61	72	18.0	119	122	2.0	2	5	150.0	13	15	38.5	66.7	59%	34%
291	346	18.9	200	205	2.7	28	24	-14.3	144	193	51.4	56.0	48%	57%
219	199	-9.1	181	245	35.4	16	17	6.3	138	110	44.9	61.8	58%	58%
196	234	19.4	196	198	1.2	21	26	23.8	78	92	51.3	51.1	50%	55%
80	69	-13.8	117	97	-16.6	19	4	-78.9	23	16	47.8	62.5	47%	48%
104	67	-35.6	127	113	-11.5	30	13	-56.7	48	26	50.0	61.5	62%	63%
1,499	1,527	1.9	1,557	1,601	2.8	59	78	32.2	736	715	37.6	38.2	27%	54%
331	281	-15.1	280	252	-9.8	21	13	-38.1	140	123	48.6	45.5	67%	77%
148	145	-2.0	161	165	2.3	6	3	-50.0	78	58	56.4	39.7	46%	59%
58	50	-13.8	73	80	9.6	11	9	-18.2	21	16	81.0	62.5	18%	48%
229	274	19.7	261	288	10.3	16	7	-56.3	108	109	55.6	50.5	71%	65%
748	821	9.8	1,148	1,209	5.3	26	48	84.6	397	397	37.8	39.3	67%	70%
1,196	1,273	6.4	1,614	1,789	10.8	65	40	-38.5	475	460	41.1	34.6	68%	71%
102	122	19.6	74	86	15.8	9	20	122.2	22	36	36.4	41.7	30%	38%
3,091	3,115	0.8	4,284	4,389	2.5	209	189	-9.6	1,291	1,305	48.8	43.6	48%	46%
2	3	50.0	4	5	36.4	1	0	-100.0	0	0	*	*	0%	0%
101	87	-13.9	163	162	-0.6	14	11	-21.4	24	19	37.5	21.1	77%	64%
306	284	-7.2	264	264	-0.1	15	16	6.7	136	124	59.6	50.0	53%	58%
72	**	**	**	**	**	**	**	**	41	**	63.4	**	0%	0%


Correction: In the March issue of the *Economic Security* bulletin, figures for the "Total Number of Applications" for the Food Assistance and Family Independence programs appeared under the heading "Average Number of Applications per month." We apologize for the error.

¹In some cases the Michigan number is slightly different from the county total.

*Percent change cannot be calculated.

**Public Assistance data for Charlevoix is combined with and reported as Emmet, Public Assistance data for Leelanau is combined with and reported as Grand Traverse, and Public Assistance data for Missaukee is combined with and reported as Wexford.

Data sources: Unemployment: Bureau of Labor Statistics, Local Area Unemployment Statistics; Public Assistance: Michigan Family Independence Agency.

 Prepared by: Michigan League for Human Services	Unemployment (data not seasonally adjusted)						Food Assistance Program					
	Unemployment Rate			Number Unemployed			Total Number of Applications			Average Number of Households Receiving Food Assistance Per Month		
	Qtr 1 2003	Qtr 1 2004	% change	Qtr 1 2003	Qtr 1 2004	% change	Qtr 1 2003	Qtr 1 2004	% change	Qtr 1 2003	Qtr 1 2004	% change
County												
Lenawee	8.0	7.3	-8.3	3,703	3,485	-5.9	988	1,036	4.9	2,546	2,813	10.5
Livingston	4.8	4.7	-2.1	4,132	4,198	1.6	789	782	-0.9	1,441	1,633	13.3
Luce	9.0	7.4	-17.7	242	204	-15.4	86	112	30.2	399	413	3.4
Mackinac	22.5	21.6	-4.0	1,241	1,201	-3.2	116	77	-33.6	241	253	4.8
Macomb	6.6	7.0	5.5	28,909	30,605	5.9	6,560	7,310	11.4	15,804	18,936	19.8
Manistee	11.4	10.4	-9.1	1,250	1,167	-6.7	282	295	4.6	1,023	1,079	5.5
Marquette	8.2	6.9	-15.5	2,658	2,275	-14.4	551	673	22.1	1,982	2,181	10.0
Mason	15.3	12.6	-17.5	2,297	1,876	-18.3	354	396	11.9	1,223	1,364	11.5
Mecosta	7.5	7.9	5.3	1,391	1,490	7.1	569	614	7.9	1,879	2,065	9.9
Menominee	8.4	7.7	-8.7	984	903	-8.3	277	277	0.0	926	959	3.6
Midland	6.9	6.9	0.0	2,882	2,902	0.7	781	874	11.9	2,324	2,656	14.3
Missaukee**	10.6	10.0	-5.7	711	680	-4.5	**	**	**	**	**	**
Monroe	7.3	7.0	-4.1	5,435	5,212	-4.1	1,169	1,318	12.7	3,221	3,630	12.7
Montcalm	10.2	9.4	-7.2	2,604	2,462	-5.5	703	776	10.4	2,153	2,400	11.5
Montmorency	16.9	17.2	1.6	634	648	2.2	136	119	-12.5	586	556	-5.2
Muskegon	11.2	9.3	-16.7	9,175	7,629	-16.9	3,382	3,808	12.6	10,006	10,714	7.1
Newaygo	11.7	9.6	-18.0	2,536	2,120	-16.4	654	604	-7.6	2,025	2,194	8.4
Oakland	5.2	5.6	7.6	34,791	37,445	7.6	9,622	10,215	6.2	19,829	22,255	12.2
Oceana	13.3	11.6	-13.0	1,784	1,527	-14.4	414	395	-4.6	1,286	1,431	11.2
Ogemaw	12.0	11.3	-5.8	1,104	1,056	-4.3	252	290	15.1	1,355	1,442	6.4
Ontonagon	9.9	8.8	-10.8	274	249	-8.9	67	67	0.0	276	310	12.1
Osceola	9.6	9.2	-4.2	1,016	986	-2.9	373	342	-8.3	1,121	1,265	12.8
Oscoda	15.6	14.9	-4.5	504	466	-7.5	131	124	-5.3	524	573	9.4
Otsego	9.3	8.1	-12.9	1,251	1,091	-12.8	297	327	10.1	885	997	12.6
Ottawa	6.5	5.8	-10.3	8,985	8,123	-9.6	1,597	1,878	17.6	3,445	4,217	22.4
Presque Isle	19.3	18.0	-6.6	1,171	1,100	-6.1	104	160	53.8	470	490	4.3
Roscommon	12.3	11.8	-4.6	1,032	1,023	-0.8	359	307	-14.5	1,534	1,641	7.0
Saginaw	9.8	9.3	-5.1	9,612	9,116	-5.2	3,548	3,804	7.2	11,176	12,139	8.6
Saint Clair	10.1	9.7	-3.9	8,436	8,100	-4.0	2,077	2,382	14.7	5,576	6,250	12.1
Saint Joseph	6.9	7.0	1.9	2,135	2,165	1.4	908	933	2.8	2,454	2,731	11.3
Sanilac	13.0	12.6	-3.1	2,628	2,554	-2.8	551	618	12.2	1,760	2,045	16.2
Schoolcraft	13.9	13.5	-2.9	580	571	-1.6	118	105	-11.0	442	457	3.4
Shiawassee	8.9	8.7	-2.2	2,969	2,977	0.3	765	954	24.7	2,320	2,674	15.2
Tuscola	11.4	10.4	-8.2	3,198	3,007	-6.0	564	545	-3.4	1,775	1,905	7.3
Van Buren	8.8	9.1	3.4	3,209	3,398	5.9	1,379	1,440	4.4	3,622	3,919	8.2
Washtenaw	3.1	3.2	3.2	5,540	5,919	6.8	2,678	2,760	3.1	5,893	6,689	13.5
Wayne	8.7	8.8	0.4	79,344	79,561	0.3	42,099	46,867	11.3	116,355	126,039	8.3
Wexford**	10.6	9.3	-12.2	1,542	1,358	-11.9	657	735	11.9	2,165	2,307	6.6

Correction: In the March issue of the *Economic Security* bulletin, figures for the "Total Number of Applications" for the Food Assistance and Family Independence programs appeared under the heading "Average Number of Applications per month." We apologize for the error.

FACT

From March 2001 to March 2004, Michigan's job growth was -4.9 percent, while Michigan's working-age population growth was 1.4 percent. (Economic Policy Institute)

¹In some cases the Michigan number is slightly different from the county total.

*Percent change cannot be calculated.

**Public Assistance data for Charlevoix is combined with and reported as Emmet, Public Assistance data for Leelanau is combined with and reported as Grand Traverse, and Public Assistance data for Missaukee is combined with and reported as Wexford.

Data sources: Unemployment: Bureau of Labor Statistics, Local Area Unemployment Statistics; Public Assistance: Michigan Family Independence Agency.

Family Independence Program (Cash Assistance)

Total Number of Applications			Average Number of Families Receiving Cash Assistance Per Month			Application Approvals : Unemployment Benefits Exhausted, Layoff or Discharge, Depleted Savings, Non-Exempt Property or Loss of Other Resources			Total Number of Denials		Income Exceeds Standards as Percent of Denials		Percent of Cases Without Earned Income, Out of Total Cases Expected to Work	
Qtr 1 2003	Qtr 1 2004	% change	Qtr 1 2003	Qtr 1 2004	% change	Qtr 1 2003	Qtr 1 2004	% change	Qtr 1 2003	Qtr 1 2004	Qtr 1 2003	Qtr 1 2004	Qtr 1 2003	Qtr 1 2004
400	398	-0.5	384	376	-2.2	2	9	350.0	217	188	51.2	51.6	41%	45%
305	293	-3.9	155	142	-8.0	17	10	-41.2	138	181	52.9	50.8	37%	43%
55	38	-30.9	69	40	-42.8	3	5	66.7	12	25	66.7	56.0	64%	49%
45	38	-15.6	24	30	25.4	3	8	166.7	36	21	69.4	90.5	67%	23%
2,070	2,294	10.8	2,112	2,372	12.3	79	152	92.4	1,123	1,114	46.1	49.4	59%	63%
105	102	-2.9	130	134	3.1	15	17	13.3	48	38	50.0	55.3	61%	58%
177	155	-12.4	237	246	3.8	24	11	-54.2	48	51	70.8	54.9	59%	62%
120	154	28.3	191	206	7.7	18	15	-16.7	35	50	34.3	62.0	51%	56%
264	213	-19.3	213	208	-2.7	5	6	20.0	140	87	47.1	43.7	52%	67%
99	100	1.0	127	96	-23.9	7	14	100.0	33	36	45.5	22.2	58%	76%
305	315	3.3	306	333	8.7	30	41	36.7	151	155	60.3	45.8	43%	49%
**	**	**	**	**	**	**	**	**	**	**	**	**	**	**
526	516	-1.9	592	595	0.5	25	22	-12.0	233	259	38.6	39.4	62%	68%
349	304	-12.9	303	320	5.4	44	19	-56.8	169	163	52.1	46.0	70%	68%
57	54	-5.3	59	51	-13.6	9	6	-33.3	22	24	63.6	45.8	54%	53%
1,255	1,391	10.8	2,578	2,631	2.1	105	76	-27.6	422	473	48.1	52.2	70%	72%
252	218	-13.5	295	293	-0.8	21	20	-4.8	85	88	31.8	29.5	62%	73%
2,797	2,843	1.6	3,049	3,274	7.4	95	138	45.3	1,537	1,482	48.0	43.3	58%	61%
192	166	-13.5	321	327	2.0	47	50	6.4	69	54	55.1	53.7	64%	70%
99	103	4.0	149	151	1.1	25	21	-16.0	25	47	52.0	51.1	42%	46%
30	19	-36.7	38	34	-11.3	3	1	-66.7	10	9	40.0	77.8	20%	26%
142	147	3.5	161	174	8.1	22	12	-45.5	51	63	64.7	58.7	65%	66%
58	38	-34.5	65	58	-10.8	9	7	-22.2	22	17	45.5	35.3	23%	59%
112	139	24.1	94	87	-7.4	5	8	60.0	45	71	75.6	67.6	50%	77%
508	581	14.4	458	459	0.1	10	18	80.0	202	230	39.1	50.4	54%	59%
45	46	2.2	42	38	-8.8	4	2	-50.0	20	19	55.0	42.1	67%	0%
150	106	-29.3	177	191	7.5	12	1	-91.7	46	35	50.0	51.4	29%	31%
1,384	1,497	8.2	3,228	3,081	-4.6	99	98	-1.0	556	651	45.3	43.6	51%	50%
762	853	11.9	996	1,049	5.3	88	59	-33.0	325	346	42.5	37.9	65%	68%
380	341	-10.3	349	368	5.6	13	21	61.5	196	159	45.4	36.5	71%	66%
196	235	19.9	227	282	24.3	38	61	60.5	80	85	51.3	50.6	72%	55%
37	43	16.2	55	63	14.5	7	1	-85.7	12	12	41.7	58.3	62%	58%
318	400	25.8	283	298	5.4	23	14	-39.1	158	198	54.4	49.5	32%	52%
265	275	3.8	246	233	-5.3	27	19	-29.6	127	122	50.4	42.6	53%	58%
568	531	-6.5	710	662	-6.8	62	56	-9.7	272	237	48.5	46.4	56%	54%
859	827	-3.7	1,032	1,165	12.9	13	4	-69.2	393	332	36.4	36.1	65%	63%
12,295	13,642	11.0	30,282	32,928	8.7	517	358	-30.8	4,920	5,105	38.2	37.2	66%	72%
299	279	-6.7	288	319	10.5	29	11	-62.1	126	111	37.3	46.8	57%	73%

Correction: In the March issue of the *Economic Security* bulletin, figures for the “Total Number of Applications” for the Food Assistance and Family Independence programs appeared under the heading “Average Number of Applications per month.” We apologize for the error.

FACT

Michigan’s 2003 income tax threshold—the income level at which families begin paying income tax—is the 7th lowest in the nation at \$10,500.

¹In some cases the Michigan number is slightly different from the county total.

*Percent change cannot be calculated.

**Public Assistance data for Charlevoix is combined with and reported as Emmet, Public Assistance data for Leelanau is combined with and reported as Grand Traverse, and Public Assistance data for Missaukee is combined with and reported as Wexford.

Data sources: Unemployment: Bureau of Labor Statistics, Local Area Unemployment Statistics; Public Assistance: Michigan Family Independence Agency.

Employment Trends by Selected Industries in Michigan
(data not seasonally adjusted)

Industry	Avg 2003 Qtr 1	Avg 2004 Qtr 1	% Change	Industry	Avg 2003 Qtr 1	Avg 2004 Qtr 1	% Change
TOTAL NONFARM	435,990	431,013	-1.2	Trade Transportation & Utilities	80,210	79,363	-1.1
TOTAL PRIVATE	365,740	361,983	-1.0	•Wholesale Trade	17,187	17,240	0.3
GOODS PRODUCING	91,203	88,227	-3.4	•Retail Trade	50,600	49,837	-1.5
SERVICE PROVIDING	344,787	342,787	-0.6	Motor Vehicle and Parts Dealers	6,173	6,137	-0.6
Natural Resources and Mining	760	740	-2.7	Furniture and Home Furnishings	1,843	1,730	-6.6
Mining	583	577	-1.2	Electronics and Appliance	1,690	1,623	-4.1
Mining except oil and gas	400	400	0.0	Building Material and Supplies Dealers	4,280	4,290	0.2
Construction	16,543	16,503	-0.2	Food and Beverage Stores	8,820	8,690	-1.5
Construction of Buildings	4,070	4,107	0.9	Health and Personal Care	3,273	3,153	-3.8
Heavy and Civil Engineering	1,173	1,397	16.0	Gasoline Stations	2,720	2,633	-3.3
Specialty Trade Contractors	11,300	11,000	-2.7	Clothing and Clothing Accessories	3,787	3,850	1.6
Manufacturing	73,900	70,983	-4.1	Sporting Goods, Hobby, Book, and Music Stores	2,503	2,473	-1.2
•Durable Goods	58,540	56,457	-3.7	General Merchandise Stores	11,590	11,393	-1.7
Wood Product Manufacturing	1,127	1,047	-7.6	Miscellaneous Retail	2,937	2,857	-2.8
Nonmetallic Mineral Products	1,687	1,703	1.0	•Transportation & Warehousing	12,423	12,287	-1.1
Primary Metal Manufacturing	2,790	2,657	-5.0	Rail Transportation	470	460	-2.2
Fabricated Metal Product	8,367	8,183	-2.2	Truck Transportation	3,387	3,343	-1.3
Machinery Manufacturing	7,790	7,580	-2.8	Warehousing and Storage	1,557	1,497	-4.0
Computer and Electronic Products	2,007	1,953	-2.7	Information	7,097	6,877	-3.2
Electrical Equipment and Appliances	1,483	1,423	-4.2	Publishing Industries	2,643	2,543	-3.9
Motor Vehicle Manufacturing	7,997	7,710	-3.7	Telecommunications	2,400	2,267	-5.9
Motor Vehicle Parts Manufacturing	18,793	17,703	-6.2	Financial Activities	21,480	21,613	0.6
Furniture and Related Products	2,757	2,527	-9.1	Finance and Insurance	16,087	16,043	-0.3
Miscellaneous Manufacturing	1,860	1,750	-6.3	Real Estate	3,710	3,757	1.2
•Non-Durable Goods	15,360	14,527	-5.7	Rental and Leasing Services	1,613	1,673	3.6
Food Manufacturing	3,203	2,990	-7.1				
Paper Manufacturing	1,600	1,527	-4.8				
Printing and Related Support Activities	1,967	1,873	-5.0				
Chemical Manufacturing	2,983	2,850	-4.7				
Plastics and Rubber Products	4,370	4,237	-3.1				

Would you like to receive
our Economic Security Bulletin
by E-mail?

Send your request to
pruark@mlan.net.

Note: Industry details and subtotals may not sum to totals due to rounding.

Source: Department of Labor and Economic Growth/Office of Labor Market Information, Current Employment Statistics Section - (800) 225-3732

Employment Trends by Selected Industries in Michigan
(data not seasonally adjusted)

Industry	Avg 2003 Qtr 1	Avg 2004 Qtr 1	% Change	Industry	Avg 2003 Qtr 1	Avg 2004 Qtr 1	% Change
Professional & Business Services	57,647	56,540	-2.0	Other Services	17,067	16,890	-1.0
Legal Services	2,880	2,897	0.6	Repair and Maintenance	4,237	4,143	-2.3
Accounting and Tax Preparation	3,263	2,680	-21.8	Personal and Laundry Services	4,093	4,003	-2.2
Architectural Engineering	7,303	7,417	1.5	Religious Organizations	5,380	5,533	2.8
Computer Systems Design	4,070	3,837	-6.1	Government	70,250	69,030	-1.8
Advertising and Related	1,600	1,620	1.2	• Federal Government	5,597	5,503	-1.7
Management of Companies	6,930	6,773	-2.3	Federal Government Hospital Services	580	593	2.2
Administrative and Support Services	25,300	25,047	-1.0	U.S. Postal Service	2,880	2,790	-3.2
Educational and Health Services	54,020	54,693	1.2	• State Government	17,507	16,850	-3.9
• Educational Services	6,900	7,933	13.0	State Government Educational Services	10,460	9,860	-6.1
(see also Government)				State Government Hospital Services	1,353	1,410	4.0
• Health Care and Social Assistance	47,120	46,760	-0.8	• Local Government	47,147	46,677	-1.0
Ambulatory Health Care Services	15,527	15,467	-0.4	Local Government Educational Services	28,693	28,830	0.5
Offices of Physicians	6,133	6,193	1.0	Local Government Hospitals	1,340	1,310	-2.3
Offices of Dentists	3,090	3,117	0.9	Local Government Elementary and Secondary Schools	26,500	26,640	0.5
Offices of Other Health Professionals	1,797	1,857	3.2	Local Government Junior Colleges	2,120	2,150	1.4
Home Health Care Service	2,287	2,233	-2.4				
Hospitals	17,950	17,793	-0.9				
Nursing and Residential Care	8,607	8,590	-0.2				
Nursing Care Facilities	4,053	3,983	-1.8				
Community Care Facilities	2,160	2,217	2.6				
Social Assistance	5,037	4,910	-2.6				
Individual and Family Services	2,323	2,243	-3.6				
Leisure and Hospitality	37,017	37,780	2.0				
Performing Arts Spectator Activities	870	903	3.7				
Amusement, Gambling and Recreation	3,880	4,137	6.2				
Accommodation	3,100	3,113	0.4				
Food Services and Drinking	28,890	29,367	1.6				

VISIT OUR WEBSITE FOR MORE INFORMATION!

The "Work and Wages" section of the Michigan League for Human Services website has information on Workforce Development, Work Supports, Unemployment, and Self-Sufficiency. It also includes back issues of the Economic Security Bulletin. Go to <http://www.MiLHS.org> and click the "Work and Wages" tab at the left.

Note: Industry details and subtotals may not sum to totals due to rounding.

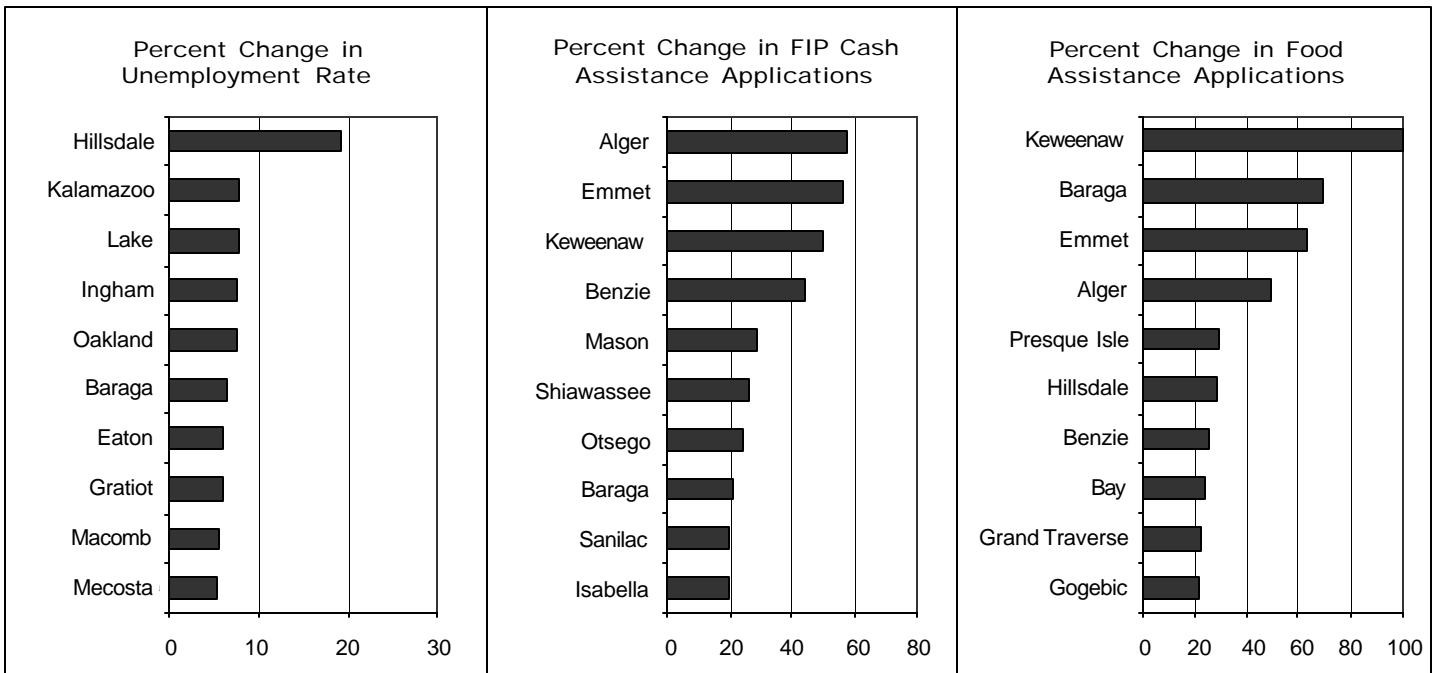
Source: Department of Labor and Economic Growth/Office of Labor Market Information, Current Employment Statistics Section - (800) 225-3732



Michigan League for Human Services
 1115 South Pennsylvania Avenue, Suite 202
 Lansing, MI 48912-1658
 (517) 487-5436 — Fax (517) 371-4546
 Web site: www.milhs.org
A United Way Agency

*Nonprofit
 Organization*
 U.S. Postage
Paid
 Lansing, MI
 Permit #1421

Percentage Change in Michigan Counties With Largest Increases
 First Quarter 2003 — First Quarter 2004



Sources: Unemployment: Bureau of Labor Statistics, Local Area Unemployment Statistics; Public Assistance: Michigan Family Independence Agency