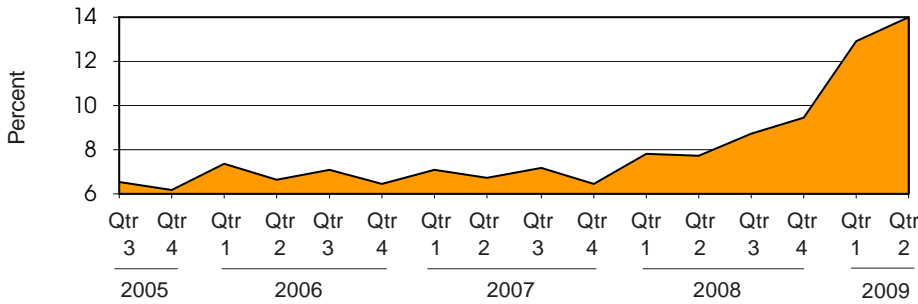
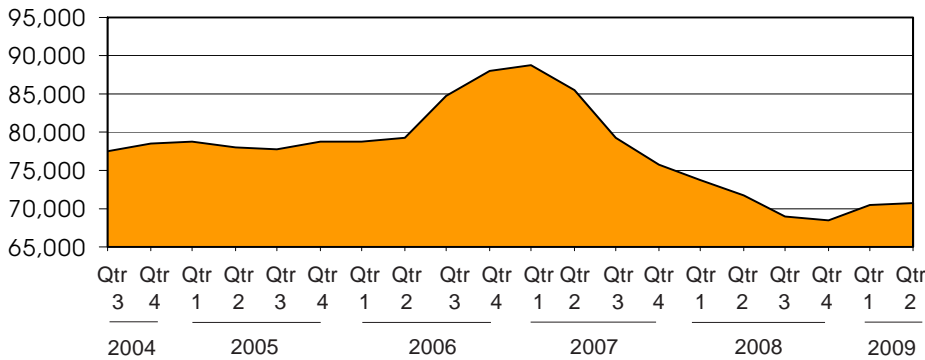


Michigan's Unemployment Rate Over the Past Four Years
(not seasonally adjusted)



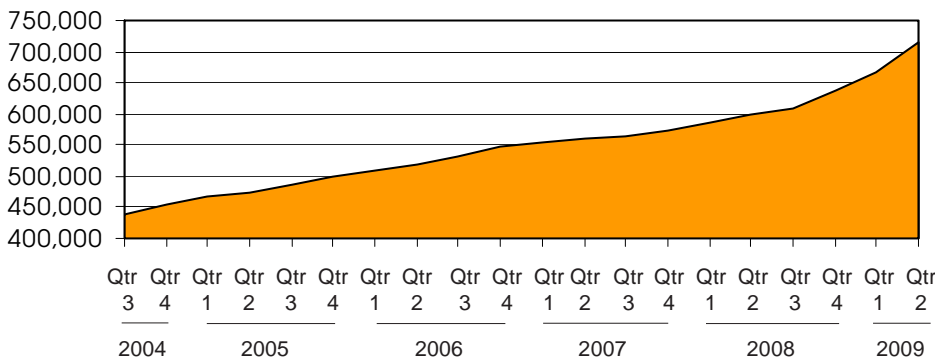
Source: Bureau of Labor Statistics

Family Independence Program Cases During
the Past Five Years (regular FIP only)



Source: Michigan Department of Human Services

Food Assistance Households Over the Past Five Years



Source: Michigan Department of Human Services

Unemployment Insurance and Cash Assistance Policies Must Become More Responsive to Michigan's Needs


Unemployment

Michigan's second quarter unemployment rate has nearly doubled between 2008 and 2009. Macomb County, the third largest county in the state, increased by 8.3 percentage points in that time. Workers in this state are hurting, and it is crucial that Michigan enact unemployment insurance (UI) reform, as many states have already done. This will not only extend benefits to more workers, but allow Michigan to draw down more federal money to fund its UI system.

Public Assistance

Michigan counties were nearly split in whether they increased or decreased their FIP cash assistance cases since second quarter 2008. However, the state as a whole saw a slight decrease in that time, which is ironic when Michigan is in one of its worst recessions and leads the nation in unemployment. One reason FIP is not more responsive to actual need is that it aids only the poorest of families—a family must be 44 percent below the federal poverty line to qualify.

We are now including county level child care data in the *Economic Security Bulletin*

 Prepared by: Michigan League for Human Services	Unemployment (data not seasonally adjusted)						Food Assistance Program					
	Unemployment Rate			Number Unemployed			Total Number of Applications		Average Number of Households Receiving Food Assistance Per Month			
	County	Qtr 2 2008	Qtr 2 2009	+/- points	Qtr 2 2008	Qtr 2 2009	% change	Qtr 2 2009	% change	Qtr 2 2008	Qtr 2 2009	% change
Michigan¹	7.7	14.0	6.2	384,148	679,125	76.8	*	*	598,598	714,873	19.4	
Alcona	10.5	18.1	7.6	459	799	73.9	*	*	600	666	10.9	
Alger	9.4	14.6	5.2	401	608	51.5	*	*	401	474	18.1	
Allegan	6.9	13.0	6.1	3,863	7,108	84.0	*	*	4,555	5,717	25.5	
Alpena	8.1	14.3	6.2	1,200	2,153	79.5	*	*	2,434	2,746	12.8	
Antrim	8.4	14.9	6.4	1,008	1,760	74.6	*	*	1,098	1,331	21.2	
Arenac	9.2	16.9	7.7	744	1,341	80.2	*	*	1,294	1,491	15.2	
Baraga	12.9	25.8	12.9	556	1,184	113.1	*	*	496	553	11.4	
Barry	5.9	10.4	4.5	1,809	3,025	67.2	*	*	2,577	3,217	24.8	
Bay	7.4	12.5	5.1	4,092	6,769	65.4	*	*	7,333	8,360	14.0	
Benzie	8.4	12.9	4.6	750	1,146	52.8	*	*	797	1,007	26.3	
Berrien	7.2	12.8	5.6	5,782	9,959	72.2	*	*	10,966	12,329	12.4	
Branch	7.6	14.8	7.2	1,709	3,333	95.1	*	*	2,548	3,203	25.7	
Calhoun	7.0	12.5	5.6	4,854	8,383	72.7	*	*	11,542	14,612	26.6	
Cass	6.1	11.2	5.1	1,625	2,930	80.3	*	*	2,942	3,765	28.0	
Charlevoix	8.4	14.6	6.1	1,186	2,032	71.4	*	*	982	1,233	25.6	
Cheboygan	9.0	13.1	4.1	1,099	1,513	37.7	*	*	1,830	2,013	10.0	
Chippewa	9.2	12.6	3.5	1,611	2,177	35.2	*	*	1,912	2,307	20.7	
Clare	10.9	17.0	6.0	1,450	2,215	52.7	*	*	3,023	3,426	13.3	
Clinton	5.9	9.7	3.8	2,227	3,516	57.9	*	*	2,062	2,705	31.2	
Crawford	8.8	14.2	5.5	574	891	55.2	*	*	999	1,152	15.2	
Delta	7.9	12.6	4.6	1,594	2,485	55.9	*	*	2,400	2,739	14.1	
Dickinson	6.5	12.4	5.9	949	1,784	88.0	*	*	1,212	1,507	24.3	
Eaton	6.1	10.7	4.6	3,593	6,118	70.3	*	*	3,961	4,924	24.3	
Emmet	9.0	14.1	5.1	1,788	2,797	56.4	*	*	1,599	1,908	19.3	
Genesee	10.3	16.1	5.8	20,958	31,509	50.3	*	*	38,666	44,255	14.5	
Gladwin	9.7	16.8	7.1	1,040	1,785	71.6	*	*	1,911	2,130	11.5	
Gogebic	8.7	14.4	5.6	659	1,077	63.5	*	*	1,192	1,405	17.8	
Gr. Traverse	6.9	12.1	5.1	3,410	5,864	72.0	*	*	4,334	5,197	19.9	
Gratiot	8.8	14.7	5.9	1,733	2,874	65.8	*	*	2,346	2,756	17.5	
Hillsdale	9.4	18.3	8.9	2,000	3,946	97.3	*	*	2,493	3,065	23.0	
Houghton	8.2	12.0	3.8	1,406	2,023	43.9	*	*	1,926	2,108	9.4	
Huron	8.0	15.5	7.5	1,325	2,512	89.6	*	*	1,826	2,086	14.2	
Ingham	6.9	11.6	4.6	10,744	17,244	60.5	*	*	18,735	22,903	22.2	
Ionia	7.7	14.9	7.2	2,341	4,443	89.8	*	*	3,244	3,949	21.7	
Iosco	9.9	17.1	7.1	1,099	1,885	71.5	*	*	2,143	2,539	18.5	
Iron	8.1	12.8	4.7	485	752	54.9	*	*	685	797	16.4	
Isabella	5.7	8.7	3.0	2,245	3,370	50.1	*	*	4,759	7,043	48.0	
Jackson	7.7	14.1	6.4	5,970	10,592	77.4	*	*	9,327	11,288	21.0	
Kalamazoo	5.8	10.4	4.5	7,837	13,421	71.2	*	*	16,124	19,601	21.6	
Kalkaska	7.9	14.1	6.2	687	1,229	78.8	*	*	1,249	1,405	12.5	
Kent	6.3	11.3	5.0	20,504	35,060	71.0	*	*	33,057	39,241	18.7	
Keweenaw	9.9	15.6	5.7	100	158	57.5	*	*	100	114	14.3	
Lake	10.5	18.3	7.8	418	708	69.2	*	*	1,227	1,408	14.8	
Lapeer	9.3	17.1	7.8	4,077	7,400	81.5	*	*	3,283	4,154	26.5	
Leelanau	5.5	8.7	3.2	619	949	53.4	*	*	433	534	23.4	
Lenawee	9.5	16.5	7.0	4,682	8,054	72.0	*	*	4,625	5,877	27.1	
Livingston	6.2	11.8	5.6	5,801	10,658	83.7	*	*	3,352	4,574	36.5	
Luce	8.7	13.4	4.7	242	368	52.2	*	*	453	507	12.0	
Mackinac	9.0	11.9	2.9	553	712	28.9	*	*	439	562	28.0	
Macomb	8.0	16.3	8.3	33,046	67,369	103.9	*	*	32,177	42,375	31.7	

¹In some cases the Michigan number is slightly different from the county total.

*The DHS did not publish application data for this quarter, and consequently that data is not included in this edition.

Data sources: Unemployment: Bureau of Labor Statistics, Local Area Unemployment Statistics; Public Assistance: Michigan Department of Human Services.


Family Independence Program (Cash Assistance)					Child Day Care				Medicaid						
Total Number of Applications		Average Number of Families Receiving Cash Assistance Per Month			Average Number of Children Receiving Care Per month		Average Payment Per Child		Total Number of Applications		Average Number of Persons Eligible for Medicaid ONLY (Excludes FIP & SSI Recipients)			Percent of Population Eligible for Medicaid (Includes FIP & SSI Recipients) ²	
Qtr2 2009	% change	Qtr 2 2008	Qtr 2 2009	% change	Qtr 2 2008	Qtr 2 2009	Qtr 2 2008	Qtr 2 2009	Qtr 2 2009	% change	Qtr 2 2008	Qtr 2 2009	% change	Qtr 2 2008	Qtr 2 2009
*	*	76,618	74,149	-3.2	96,852	78,639	\$297	\$286	*	*	1,132,071	1,296,600	14.5	15.5%	17.2%
*	*	20	26	28.3	39	15	\$180	\$166	*	*	1,339	1,392	4.0	14.1%	14.5%
*	*	21	24	12.7	34	20	\$168	\$153	*	*	1,129	1,236	9.4	14.2%	15.7%
*	*	391	428	9.4	592	479	\$264	\$237	*	*	12,722	15,209	19.5	13.4%	15.8%
*	*	188	203	7.8	254	232	\$215	\$203	*	*	4,456	4,868	9.3	19.7%	21.5%
*	*	65	46	-28.9	156	114	\$243	\$226	*	*	3,209	3,651	13.8	15.5%	17.2%
*	*	94	88	-7.1	116	117	\$240	\$194	*	*	2,503	2,836	13.3	19.6%	21.9%
*	*	43	54	24.6	48	38	\$189	\$182	*	*	1,144	1,245	8.8	16.9%	18.2%
*	*	224	249	11.2	318	244	\$241	\$232	*	*	5,907	7,086	20.0	12.1%	14.3%
*	*	744	636	-14.5	1,296	1,122	\$249	\$232	*	*	13,250	14,686	10.8	16.4%	17.5%
*	*	42	52	24.8	96	74	\$225	\$220	*	*	2,158	2,514	16.5	14.4%	16.8%
*	*	1,357	1,251	-7.8	2,048	1,498	\$268	\$258	*	*	21,104	23,602	11.8	18.3%	19.8%
*	*	287	333	15.8	359	299	\$243	\$236	*	*	6,298	7,277	15.6	17.0%	19.7%
*	*	1,634	1,736	6.2	1,607	1,258	\$277	\$262	*	*	18,625	22,275	19.6	19.7%	22.9%
*	*	285	319	12.2	419	398	\$268	\$251	*	*	6,841	8,075	18.0	16.9%	19.7%
*	*	58	43	-25.3	108	116	\$221	\$195	*	*	2,929	3,248	10.9	12.7%	14.2%
*	*	113	88	-21.6	171	123	\$211	\$199	*	*	4,420	4,726	6.9	19.7%	20.9%
*	*	184	149	-18.9	234	194	\$232	\$225	*	*	4,395	4,919	11.9	14.6%	15.7%
*	*	286	250	-12.7	240	162	\$226	\$204	*	*	5,335	5,852	9.7	23.5%	25.3%
*	*	127	112	-11.8	355	271	\$257	\$247	*	*	4,830	5,877	21.7	8.3%	9.7%
*	*	83	56	-32.7	123	71	\$215	\$208	*	*	2,107	2,370	12.4	18.0%	19.4%
*	*	151	126	-16.4	276	220	\$192	\$175	*	*	5,037	5,640	12.0	16.8%	18.4%
*	*	44	62	39.8	162	154	\$163	\$150	*	*	3,563	3,827	7.4	15.3%	16.6%
*	*	309	249	-19.5	788	596	\$285	\$281	*	*	9,091	11,104	22.1	10.3%	12.1%
*	*	58	51	-12.1	188	196	\$223	\$193	*	*	4,495	5,079	13.0	15.4%	16.9%
*	*	6,186	6,274	1.4	8,359	7,075	\$345	\$323	*	*	59,053	65,619	11.1	20.5%	22.5%
*	*	160	161	0.6	173	135	\$208	\$199	*	*	3,839	4,186	9.0	18.6%	20.4%
*	*	156	174	12.0	90	55	\$177	\$159	*	*	2,226	2,279	2.4	18.4%	19.6%
*	*	172	147	-14.6	587	484	\$254	\$218	*	*	10,488	11,689	11.4	14.1%	15.4%
*	*	250	192	-23.0	389	312	\$243	\$215	*	*	5,835	6,568	12.5	17.6%	18.8%
*	*	222	266	19.5	302	219	\$224	\$218	*	*	5,917	6,899	16.6	16.2%	18.8%
*	*	84	72	-13.9	117	109	\$193	\$208	*	*	4,670	5,022	7.5	15.6%	16.6%
*	*	118	99	-16.6	211	172	\$211	\$181	*	*	4,553	5,046	10.8	16.7%	18.3%
*	*	1,402	1,611	15.0	2,566	1,984	\$325	\$314	*	*	31,338	35,182	12.3	14.7%	16.5%
*	*	230	264	14.9	362	326	\$248	\$222	*	*	7,610	8,499	11.7	14.4%	16.1%
*	*	142	151	6.8	202	147	\$232	\$201	*	*	4,237	4,609	8.8	19.9%	21.9%
*	*	46	58	25.4	53	28	\$164	\$136	*	*	1,975	1,986	0.6	19.4%	20.2%
*	*	266	171	-35.8	485	380	\$249	\$216	*	*	7,200	8,021	11.4	13.5%	14.4%
*	*	989	1,035	4.6	1,363	963	\$257	\$242	*	*	18,669	21,706	16.3	15.2%	17.6%
*	*	1,698	1,818	7.0	2,460	2,044	\$282	\$277	*	*	26,352	30,024	13.9	14.7%	16.4%
*	*	61	64	5.5	141	111	\$239	\$211	*	*	3,088	3,368	9.1	21.1%	22.9%
*	*	4,118	4,457	8.2	6,197	5,305	\$308	\$288	*	*	70,689	80,790	14.3	15.5%	17.4%
*	*	5	1	-75.0	2	1	\$87	\$217	*	*	220	274	24.2	12.7%	14.4%
*	*	86	94	8.9	88	73	\$194	\$201	*	*	1,966	2,191	11.4	24.3%	27.1%
*	*	264	265	0.6	461	390	\$252	\$239	*	*	8,985	10,712	19.2	11.6%	13.6%
*	*	18	13	-26.4	55	44	\$244	\$247	*	*	1,337	1,423	6.4	6.7%	7.1%
*	*	376	408	8.4	770	682	\$255	\$254	*	*	11,240	13,237	17.8	13.6%	15.8%
*	*	208	220	6.1	310	304	\$305	\$305	*	*	9,507	11,792	24.0	5.9%	7.2%
*	*	46	41	-9.5	44	25	\$191	\$256	*	*	1,047	1,086	3.8	20.8%	21.7%
*	*	39	26	-33.1	48	26	\$201	\$205	*	*	1,211	1,321	9.1	13.6%	14.7%
*	*	3,108	3,333	7.3	4,392	4,008	\$328	\$324	*	*	77,282	88,769	14.9	11.6%	13.2%

¹In some cases the Michigan number is slightly different from the county total.

² Population figures based on U.S. Census Bureau county estimates from July of the previous year

*The DHS did not publish application data for this quarter, and consequently that data is not included in this edition.

Data sources: Unemployment: Bureau of Labor Statistics, Local Area Unemployment Statistics; Public Assistance: Michigan Department of Human Services.

 Prepared by: Michigan League for Human Services	Unemployment (data not seasonally adjusted)						Food Assistance Program					
	Unemployment Rate			Number Unemployed			Total Number of Applications		Average Number of Households Receiving Food Assistance Per Month			
	County	Qtr 2 2008	Qtr 2 2009	+/- points	Qtr 2 2008	Qtr 2 2009	% change	Qtr 2 2009	% change	Qtr 2 2008	Qtr 2 2009	% change
Manistee	8.2	13.0	4.7	978	1,512	54.5	*	*	1,606	1,834	14.2	
Marquette	6.7	11.0	4.2	2,401	3,849	60.3	*	*	3,308	4,082	23.4	
Mason	7.2	13.0	5.8	1,090	1,927	76.9	*	*	1,917	2,280	18.9	
Mecosta	7.9	13.6	5.6	1,561	2,607	67.0	*	*	3,843	4,696	22.2	
Menominee	5.7	12.9	7.1	759	1,732	128.3	*	*	1,263	1,538	21.7	
Midland	5.9	9.9	4.0	2,582	4,218	63.4	*	*	4,030	4,561	13.2	
Missaukee	9.1	16.2	7.2	588	1,031	75.4	*	*	773	943	22.0	
Monroe	8.1	15.8	7.8	6,215	12,117	95.0	*	*	5,953	7,457	25.3	
Montcalm	10.6	17.8	7.1	2,859	4,703	64.5	*	*	3,973	4,798	20.8	
Montmorency	12.4	20.4	7.9	509	853	67.6	*	*	823	900	9.4	
Muskegon	7.8	15.6	7.8	6,993	13,693	95.8	*	*	16,939	19,684	16.2	
Newaygo	8.0	14.3	6.3	1,827	3,189	74.5	*	*	3,173	3,865	21.8	
Oakland	6.6	12.7	6.1	40,285	75,670	87.8	*	*	34,691	43,572	25.6	
Oceana	9.2	16.9	7.8	1,308	2,366	80.9	*	*	2,032	2,352	15.7	
Ogemaw	8.7	13.3	4.7	838	1,293	54.4	*	*	2,156	2,365	9.7	
Ontonagon	8.9	16.8	7.9	298	548	83.9	*	*	422	500	18.4	
Osceola	8.4	16.2	7.9	802	1,528	90.5	*	*	1,593	1,901	19.3	
Oscoda	10.9	20.7	9.8	437	830	90.2	*	*	798	910	14.0	
Otsego	9.5	15.1	5.5	1,152	1,790	55.5	*	*	1,646	2,008	22.0	
Ottawa	6.4	12.8	6.4	8,679	16,668	92.1	*	*	6,578	9,219	40.1	
Presque Isle	11.9	18.8	6.9	729	1,165	59.7	*	*	694	812	16.9	
Roscommon	10.4	15.6	5.2	1,084	1,552	43.1	*	*	2,328	2,669	14.6	
Saginaw	8.2	13.3	5.1	7,812	12,323	57.7	*	*	16,806	19,134	13.9	
Saint Clair	9.1	17.9	8.8	7,449	14,736	97.8	*	*	10,005	12,380	23.7	
Saint Joseph	7.6	14.7	7.1	2,351	4,592	95.3	*	*	3,715	4,659	25.4	
Sanilac	10.1	18.7	8.6	2,193	3,965	80.8	*	*	3,032	3,518	16.0	
Schoolcraft	10.7	15.2	4.5	426	598	40.3	*	*	572	639	11.8	
Shiawassee	9.3	15.6	6.3	3,340	5,483	64.1	*	*	4,202	4,971	18.3	
Tuscola	9.4	17.1	7.7	2,655	4,732	78.2	*	*	3,013	3,572	18.5	
Van Buren	7.2	12.6	5.4	2,858	4,894	71.2	*	*	5,195	5,991	15.3	
Washtenaw	5.7	9.2	3.5	10,517	16,281	54.8	*	*	12,798	16,091	25.7	
Wayne	9.3	16.4	7.1	80,281	142,115	77.0	*	*	176,318	202,111	14.6	
Wexford	9.6	17.9	8.3	1,390	2,577	85.4	*	*	2,732	3,245	18.8	

FACT

According to the U.S. Census Bureau, Michigan's median income continued to slip below the national average in 2008, with \$48,591 per household compared with \$52,029 nationally.

¹In some cases the Michigan number is slightly different from the county total.

*The DHS did not publish application data for this quarter, and consequently that data is not included in this edition.

Data sources: Unemployment: Bureau of Labor Statistics, Local Area Unemployment Statistics; Public Assistance: Michigan Department of Human Services.

Family Independence Program (Cash Assistance)					Child Day Care				Medicaid						
Total Number of Applications		Average Number of Families Receiving Cash Assistance Per Month			Average Number of Children Receiving Care Per month		Average Payment Per Child		Total Number of Applications		Average Number of Persons Eligible for Medicaid ONLY (Excludes FIP & SSI Recipients)			Percent of Population Eligible for Medicaid (Includes FIP & SSI Recipients) ²	
Qtr2 2009	% change	Qtr 2 2008	Qtr 2 2009	% change	Qtr 2 2008	Qtr 2 2009	Qtr 2 2008	Qtr 2 2009	Qtr 2 2009	% change	Qtr 2 2008	Qtr 2 2009	% change	Qtr 2 2008	Qtr 2 2009
*	*	150	154	2.7	116	90	\$212	\$173	*	*	3,005	3,324	10.6	16.0%	17.4%
*	*	181	192	5.7	308	284	\$220	\$186	*	*	6,805	7,641	12.3	12.7%	13.9%
*	*	174	143	-18.0	376	295	\$220	\$212	*	*	4,120	4,912	19.2	18.0%	20.6%
*	*	210	181	-13.5	232	218	\$219	\$194	*	*	6,058	6,917	14.2	18.0%	20.3%
*	*	75	65	-12.5	162	119	\$183	\$163	*	*	2,973	3,381	13.7	14.5%	16.2%
*	*	334	271	-18.8	499	421	\$238	\$232	*	*	8,818	9,672	9.7	13.3%	14.2%
*	*	61	50	-17.9	100	103	\$237	\$204	*	*	1,954	2,246	14.9	15.3%	17.0%
*	*	694	686	-1.2	808	641	\$300	\$289	*	*	12,751	15,392	20.7	10.8%	12.6%
*	*	266	232	-12.8	355	314	\$228	\$219	*	*	9,338	10,421	11.6	18.3%	20.0%
*	*	45	38	-15.6	85	39	\$196	\$187	*	*	1,683	1,795	6.6	20.1%	20.9%
*	*	2,877	3,041	5.7	2,830	2,342	\$247	\$238	*	*	24,684	27,516	11.5	21.7%	23.7%
*	*	248	282	13.7	308	235	\$251	\$230	*	*	7,357	8,723	18.6	18.7%	21.8%
*	*	3,476	3,594	3.4	5,102	4,024	\$349	\$343	*	*	77,521	90,268	16.4	8.4%	9.6%
*	*	270	282	4.3	283	172	\$244	\$232	*	*	5,302	5,901	11.3	24.2%	26.6%
*	*	170	129	-24.3	269	225	\$227	\$206	*	*	3,991	4,274	7.1	23.9%	25.2%
*	*	23	22	-2.9	32	16	\$201	\$183	*	*	950	984	3.6	16.8%	17.8%
*	*	117	101	-13.7	144	104	\$224	\$213	*	*	3,333	3,867	16.0	18.3%	20.9%
*	*	60	43	-27.8	48	37	\$191	\$165	*	*	1,507	1,658	10.0	21.5%	22.8%
*	*	139	103	-26.3	287	262	\$254	\$239	*	*	3,856	4,546	17.9	19.0%	21.8%
*	*	459	533	16.0	1,140	910	\$277	\$257	*	*	20,084	25,008	24.5	9.0%	10.9%
*	*	49	35	-28.1	46	34	\$221	\$193	*	*	1,587	1,671	5.3	14.1%	14.8%
*	*	148	157	5.6	184	167	\$260	\$209	*	*	4,139	4,477	8.2	20.3%	22.2%
*	*	2,556	2,576	0.8	3,707	3,229	\$272	\$260	*	*	26,273	29,169	11.0	20.0%	21.7%
*	*	1,068	877	-17.9	1,305	979	\$279	\$256	*	*	19,476	23,963	23.0	14.6%	17.1%
*	*	407	422	3.9	454	353	\$265	\$267	*	*	9,805	11,639	18.7	19.1%	22.3%
*	*	180	180	0.0	375	262	\$230	\$226	*	*	6,850	7,776	13.5	18.5%	21.0%
*	*	38	48	27.4	52	35	\$154	\$125	*	*	1,307	1,317	0.8	19.3%	20.7%
*	*	361	377	4.4	584	460	\$246	\$221	*	*	9,303	10,448	12.3	16.0%	18.0%
*	*	274	250	-8.9	350	290	\$231	\$216	*	*	7,716	8,892	15.2	16.7%	18.8%
*	*	506	499	-1.5	577	428	\$262	\$249	*	*	12,108	13,791	13.9	19.5%	21.8%
*	*	1,157	1,124	-2.9	2,039	1,744	\$350	\$331	*	*	22,980	26,817	16.7	8.6%	9.8%
*	*	32,337	29,172	-9.8	33,042	26,038	\$311	\$306	*	*	271,182	309,881	14.3	21.9%	23.8%
*	*	250	193	-22.9	398	333	\$238	\$220	*	*	5,833	6,815	16.8	23.1%	26.0%

FACT

According to the U.S. Census Bureau, employer-sponsored health insurance is falling at an alarming rate in Michigan. Since the start of this decade, 833,000 Michigan residents have lost such coverage.

¹In some cases the Michigan number is slightly different from the county total.

² Population figures based on U.S. Census Bureau county estimates from July of the previous year

*The DHS did not publish application data for this quarter, and consequently that data is not included in this edition.

Data sources: Unemployment: Bureau of Labor Statistics, Local Area Unemployment Statistics; Public Assistance: Michigan Department of Human Services.

Employment Trends by Selected Industries in Michigan
(data not seasonally adjusted, rounded to the nearest hundred)

Industry	Avg 2008 Qtr 2	Avg 2009 Qtr2	% Change	Industry	Avg 2008 Qtr 2	Avg 2009 Qtr 2	% Change
TOTAL NONFARM	4,213,600	3,906,600	-7.3	Wholesale Electronic Markets and Agents and Brokers	24,400	20,300	-16.8
TOTAL PRIVATE	3,559,400	3,253,500	-8.6	•Retail Trade	478,900	456,300	-4.7
GOODS PRODUCING	749,800	596,600	-20.4	Motor Vehicle and Parts Dealers	56,400	50,600	-10.3
SERVICE-PROVIDING	3,463,800	3,310,000	-4.4	Building Material and Garden Equip. and Supplies Dealers	43,300	41,100	-5.1
Natural Resources and Mining	7,900	7,500	-5.1	Food and Beverage Stores	78,900	75,200	-4.7
Construction	157,800	132,900	-15.8	Health and Personal Care	33,700	32,000	-5.0
Construction of Buildings	35,400	29,400	-16.9	Gasoline Stations	24,400	23,700	-2.9
Heavy and Civil Engineering	17,800	16,500	-7.3	Clothing and Clothing Accessories	39,200	36,200	-7.7
Specialty Trade Contractors	104,600	87,000	-16.8	Sporting Goods, Hobby, Book, and Music Stores	22,500	21,200	-5.8
Manufacturing	584,100	456,200	-21.9	General Merchandise Stores	110,700	111,000	0.3
•Durable Goods	443,700	334,400	-24.6	Miscellaneous Store Retail	25,600	23,700	-7.4
Nonmetallic Mineral Products	13,600	11,500	-15.4	•Transportation & Warehousing & Utilities	125,800	114,700	-8.8
Primary Metal Manufacturing	23,600	21,900	-7.2	Air Transportation	14,300	12,400	-13.3
Fabricated Metal Product	78,500	63,800	-18.7	Rail Transportation	4,500	4,500	0.0
Machinery Manufacturing	68,700	55,500	-19.2	Truck Transportation	39,300	34,100	-13.2
Computer and Electronic Products	20,900	20,600	-1.4	Warehousing and Storage	12,900	11,500	-10.9
Motor Vehicle Manufacturing	47,600	29,300	-38.4	Information	62,200	56,500	-9.2
Motor Vehicle Parts Manufacturing	114,100	76,400	-33.0	Publishing Industries	21,500	18,700	-13.0
Furniture and Related Products	24,200	21,900	-9.5	Telecommunications	22,400	21,100	-5.8
•Non-Durable Goods	140,400	121,800	-13.2	Financial Activities	207,200	193,400	-6.7
Food Manufacturing	33,800	33,300	-1.5	Finance and Insurance	154,000	144,800	-6.0
Printing and Related Support Activities	16,800	16,000	-4.8	Real Estate	36,300	33,400	-8.0
Chemical Manufacturing	27,900	27,000	-3.2	Professional & Business Services	570,600	502,100	-12.0
Plastics and Rubber Products	37,600	33,700	-10.4	Legal Services	28,900	27,800	-3.8
Trade Transportation & Utilities	774,100	721,700	-6.8	Accounting, Tax Preparation, Bookkeeping & Payroll Services	30,200	30,200	0.0
•Wholesale Trade	169,400	150,700	-11.0	Architectural Engineering	65,600	53,100	-19.1
Merchant Wholesalers Durable Goods	96,500	83,800	-13.2				
Merchant Wholesalers Nondurable Goods	48,500	46,600	-3.9				

Note: Industry details and subtotals may not sum to totals due to rounding.

Source: Department of Labor and Economic Growth/Office of Labor Market Information, Current Employment Statistics Section - (800) 225-3732

Employment Trends by Selected Industries in Michigan
(data not seasonally adjusted, rounded to the nearest hundred)

Industry	Avg 2008 Qtr 2	Avg 2009 Qtr 2	% Change	Industry	Avg 2008 Qtr 2	Avg 2009 Qtr 2	% Change
Computer Systems Design	40,800	36,000	-11.8	Government	654,100	653,100	-0.2
Management, Scientific and Technical Consulting Services	19,500	16,600	-14.9	• Federal Government	53,500	54,700	2.2
Scientific Research and Development Services	20,800	19,200	-7.7	U.S. Postal Service	26,200	24,900	-5.0
Advertising and Related	15,100	13,800	-8.6	• State Government	165,300	171,200	3.6
Management of Companies	55,100	49,300	-10.5	State Government Educational Services	94,600	98,900	4.5
Administrative & Support Services	271,700	233,200	-14.2	State Government Hospital Services	16,500	16,700	1.2
Educational and Health Services	608,500	614,300	1.0	• Local Government	435,400	427,200	-1.9
• Educational Services (see also Government)	81,500	81,000	-0.6	Local Government Educational Services	247,900	241,000	-2.8
• Health Care & Social Assistance	527,100	533,300	1.2	Local Government Hospitals	13,600	13,800	1.5
Ambulatory Health Care Services	178,700	183,200	2.5	Local Government Elementary and Secondary Schools	224,700	218,600	-2.7
Offices of Physicians	69,900	70,500	0.9	Local Government Junior Colleges	22,400	21,500	-4.0
Outpatient Care Centers	15,100	15,600	3.3				
Home Health Care Service	30,300	31,600	4.3				
Hospitals	190,800	191,900	0.6				
Nursing and Residential Care	94,800	95,400	0.6				
—Nursing Care Facilities	42,600	42,800	0.5				
Social Assistance	62,700	62,800	0.2				
—Individual and Family Services	27,700	28,700	3.6				
Leisure and Hospitality	409,600	396,700	-3.1				
Performing Arts Spectator Activities	10,300	10,500	1.9				
Amusement, Gambling & Recreation	53,400	48,700	-8.8				
Accommodation	34,900	32,300	-7.4				
Food Services and Drinking	306,200	299,700	-2.1				
Other Services	177,300	172,200	-2.9				
Repair and Maintenance	38,300	35,000	-8.6				
Personal and Laundry Services	40,100	37,700	-6.0				
Religious Grantmaking Civic Professional	98,900	99,500	0.6				

VISIT OUR WEBSITE FOR MORE INFORMATION!

The "Work and Wages" section of the Michigan League for Human Services website has information on Workforce Development, Work Supports, Unemployment, and Self-Sufficiency. It also includes back issues of the Economic Security Bulletin. Go to www.MiLHS.org and click the "Work and Wages" tab at the left.

Note: Industry details and subtotals may not sum to totals due to rounding.

Source: Department of Labor and Economic Growth/Office of Labor Market Information, Current Employment Statistics Section - (800) 225-3732



Michigan League for Human Services

1115 South Pennsylvania Avenue, Suite 202
 Lansing, MI 48912-1658
 (517) 487-5436 — Fax (517) 371-4546
 Web site: www.milhs.org

A United Way Agency

Nonprofit
 Organization
 U.S. Postage
Paid
 Lansing, MI
 Permit #1421

Percentage Change in Michigan Counties With Largest Increases
 Second Quarter 2008 — Second Quarter 2009

Percentage Point Change in Unemployment Rate	Percent Change in Food Assistance Households	Percent Change in FIP Cash Assistance Families
Baraga 12.9	Isabella 48.0	Dickinson 39.8
Oscoda 9.8	Ottawa 40.1	Alcona 28.3
Hillsdale 8.9	Livingston 36.5	Schoolcraft 27.4
Saint Clair 8.8	Macomb 31.7	Iron 25.4
Sanilac 8.6	Clinton 31.2	Benzie 24.8
Macomb 8.3	Mackinac 28.0	Baraga 24.6
Wexford 8.3	Cass 28.0	Hillsdale 19.5
Montmorency 7.9	Lenawee 27.1	Ottawa 16.0
Ontonagon 7.9	Calhoun 26.6	Branch 15.8
Osceola 7.9	Lapeer 26.5	Ingham 15.0

Note: Counties in bold have population of 100,000 or more.

Sources: Unemployment: Bureau of Labor Statistics, Local Area Unemployment Statistics; Public Assistance: Michigan Department of Human Services