



Michigan's Unemployment Rate
Over the Past Four Years
(not seasonally adjusted)



FIP Caseloads Spike in Michigan During Spring Months

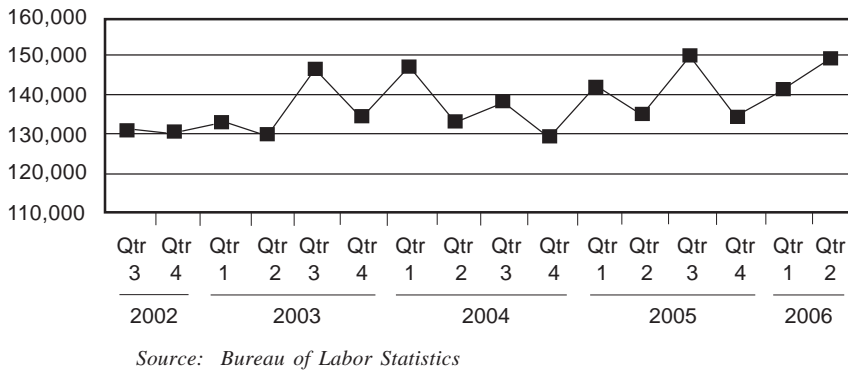
Unemployment

Unemployment dropped during the second quarter of 2006 from the previous quarter. This is common during the second quarter of a given year because of increased job opportunities during the warmer weather. More significantly, at 6.4 percent, second-quarter unemployment for 2006 has been lower than that of the same period during the previous three years.

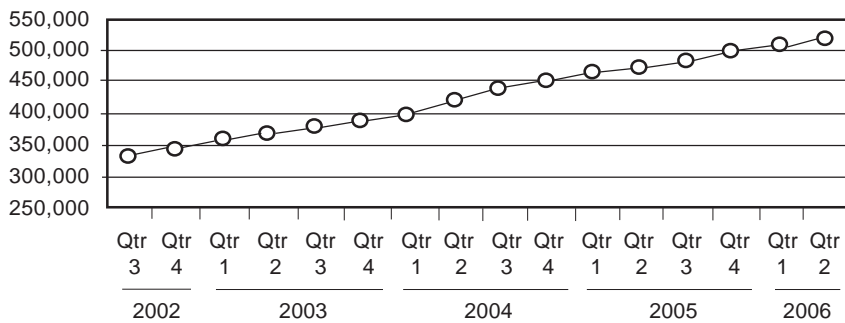
Public Assistance

Food Assistance cases have continued to increase, and were at a monthly average of 518,840 during the second quarter of 2006. This comprises approximately 5 percent of Michigan's population. There was also a significant increase (7,703) in applications for Food Assistance over the previous quarter, which is unusual—normally the number of applications during the second quarter are lower than during the first. FIP caseloads, on the other hand, have remained just below 80,000 during the past several quarters up through Quarter Two.

Food Assistance Applications in Michigan
Over the Past Four Years




Food Assistance Households Over the Past Four Years



Sectoral Trends

Construction in Michigan saw an increase of 10 percent over the same time last year, with a gain of 24,800 jobs. The leisure and hospitality sector saw a net gain of 42,300 jobs, though many of these new jobs likely pay low wages. The professional and business services sector had a net gain of 28,500 jobs, mostly due to an increase in administrative and support services employment. The manufacturing sector, however, has continued to lose jobs; durable goods manufacturing decreased by 19,000 jobs.

 Prepared by: Michigan League for Human Services	Unemployment (data not seasonally adjusted)						Food Assistance Program					
	Unemployment Rate			Number Unemployed			Total Number of Applications			Average Number of Households Receiving Food Assistance Per Month		
	Qtr 2 2005	Qtr 2 2006	% change	Qtr 2 2005	Qtr 2 2006	% change	Qtr 2 2005	Qtr 2 2006	% change	Qtr 2 2005	Qtr 2 2006	% change
Michigan¹	6.7	6.4	-5.0	342,948	325,370	-5.1	134,817	148,945	10.5	474,334	518,840	9.4
Alcona	9.3	10.0	6.8	397	437	10.3	89	97	9.0	506	551	8.8
Alger	7.9	7.9	0.4	347	355	2.3	56	83	48.2	289	304	5.2
Allegan	6.0	5.7	-4.4	3,318	3,223	-2.9	1,146	1,263	10.2	3,547	3,815	7.6
Alpena	7.2	7.0	-3.7	1,100	1,066	-3.1	407	488	19.9	1,994	2,109	5.8
Antrim	7.5	7.0	-7.5	916	875	-4.5	257	275	7.0	774	875	13.1
Arenac	8.7	9.1	4.6	696	726	4.4	246	237	-3.7	1,041	1,144	9.9
Baraga	11.5	10.9	-5.2	478	466	-2.5	122	133	9.0	413	436	5.6
Barry	5.0	4.7	-6.6	1,571	1,485	-5.5	568	621	9.3	1,971	2,203	11.8
Bay	7.1	6.7	-4.7	3,986	3,840	-3.7	1,246	1,373	10.2	6,028	6,501	7.8
Benzie	6.8	6.4	-5.4	626	599	-4.3	205	252	22.9	541	628	16.1
Berrien	6.7	6.6	-2.0	5,422	5,321	-1.9	2,772	2,940	6.1	9,213	9,776	6.1
Branch	6.6	6.6	0.0	1,523	1,550	1.8	640	651	1.7	1,828	2,062	12.8
Calhoun	6.5	6.4	-2.6	4,794	4,742	-1.1	2,509	2,679	6.8	8,850	9,849	11.3
Cass	4.8	4.5	-6.9	1,328	1,278	-3.8	690	613	-11.2	2,421	2,521	4.1
Charlevoix	6.9	6.8	-1.0	993	1,000	0.7	170	214	25.9	686	769	12.1
Cheboygan	7.6	7.9	3.5	1,004	1,063	5.9	319	320	0.3	1,390	1,453	4.5
Chippewa	8.6	8.1	-5.8	1,506	1,450	-3.7	395	431	9.1	1,593	1,659	4.2
Clare	9.1	9.0	-0.4	1,237	1,255	1.5	430	537	24.9	2,383	2,603	9.2
Clinton	5.0	4.8	-3.4	1,842	1,814	-1.5	419	494	17.9	1,427	1,669	16.9
Crawford	6.9	6.9	0.0	475	483	1.8	189	219	15.9	759	844	11.3
Delta	7.2	6.8	-5.1	1,486	1,433	-3.5	455	493	8.4	1,957	2,068	5.7
Dickinson	5.7	5.5	-3.5	837	823	-1.7	293	334	14.0	979	1,053	7.6
Eaton	5.5	5.0	-8.5	3,197	2,987	-6.6	1,016	1,174	15.6	3,168	3,555	12.2
Emmet	7.5	7.9	5.8	1,504	1,637	8.8	337	352	4.5	1,129	1,304	15.5
Genesee	7.8	7.7	-0.4	16,683	16,806	0.7	8,577	9,915	15.6	31,171	34,031	9.2
Gladwin	9.7	8.8	-9.2	1,081	997	-7.7	276	360	30.4	1,528	1,667	9.1
Gogebic	8.7	8.0	-8.1	676	629	-7.0	228	211	-7.5	1,006	1,022	1.6
Gr. Traverse	5.5	5.4	-1.8	2,675	2,699	0.9	991	1,183	19.4	2,882	3,355	16.4
Gratiot	8.0	7.8	-2.1	1,637	1,636	-0.1	489	514	5.1	1,779	1,987	11.7
Hillsdale	7.2	6.9	-3.7	1,632	1,560	-4.4	467	482	3.2	1,773	2,041	15.1
Houghton	6.6	6.7	1.5	1,145	1,198	4.7	305	338	10.8	1,563	1,701	8.9
Huron	7.4	7.4	0.5	1,265	1,305	3.2	248	308	24.2	1,490	1,631	9.4
Ingham	6.4	6.1	-4.7	9,706	9,487	-2.3	4,567	4,656	1.9	14,346	15,975	11.4
Ionia	6.7	8.0	19.3	2,105	2,597	23.4	696	805	15.7	2,494	2,781	11.5
Iosco	8.9	8.1	-9.0	969	895	-7.6	287	344	19.9	1,790	1,872	4.6
Iron	7.4	7.0	-5.4	441	423	-4.1	123	117	-4.9	598	579	-3.1
Isabella	4.6	4.5	-2.2	1,737	1,734	-0.1	672	856	27.4	2,540	3,000	18.1
Jackson	6.5	6.5	0.0	5,210	5,235	0.5	2,320	2,663	14.8	7,266	7,907	8.8
Kalamazoo	5.3	5.0	-5.7	7,070	6,731	-4.8	3,527	3,748	6.3	12,003	13,421	11.8
Kalkaska	7.3	7.2	-1.4	654	659	0.8	227	293	29.1	898	1,006	12.1
Kent	5.8	5.3	-8.6	18,914	17,596	-7.0	8,303	8,945	7.7	26,340	28,739	9.1
Keweenaw	10.4	9.1	-12.8	110	97	-11.8	10	11	10.0	74	83	12.1
Lake	9.3	8.2	-11.5	422	376	-10.9	229	191	-16.6	1,055	1,116	5.8
Lapeer	7.3	6.8	-6.8	3,310	3,070	-7.2	615	853	38.7	2,242	2,464	9.9
Leelanau	4.3	4.2	-3.8	511	505	-1.2	147	118	-19.7	288	370	28.6

¹In some cases the Michigan number is slightly different from the county total.

Data sources: Unemployment: Bureau of Labor Statistics, Local Area Unemployment Statistics; Public Assistance: Michigan Department of Human Services.


Family Independence Program (Cash Assistance)

Total Number of Applications			Average Number of Families Receiving Cash Assistance Per Month			Application Approvals: Unemployment Benefits Exhausted, Layoff or Discharge, Depleted Savings, Non-Exempt Property or Loss of Other Resources			Total Number of Denials		Income Exceeds Standards as Percent of Denials		Percent of Cases Without Earned Income, Out of Total Cases Expected to Work	
Qtr 2 2005	Qtr 2 2006	% change	Qtr 2 2005	Qtr 2 2006	% change	Qtr 2 2005	Qtr 2 2006	% change	Qtr 2 2005	Qtr 2 2006	Qtr 2 2005	Qtr 2 2006	Qtr 2 2005	Qtr 2 2006
46,063	47,847	3.9	78,050	79,204	1.5	2,557	2,256	-11.8	20,430	19,662	43.8	48.1	66%	67%
34	40	17.6	46	46	-1.4	0	0	0	19	20	42.1	65.0	46%	47%
24	24	0.0	26	22	-15.6	1	0	-100.0	9	11	77.8	81.8	19%	0%
417	386	-7.4	379	398	5.0	50	25	-50.0	207	165	55.6	53.3	57%	46%
141	141	0.0	185	176	-4.9	33	30	-9.1	64	41	56.3	68.3	41%	48%
82	68	-17.1	67	67	0.5	3	3	0.0	43	41	69.8	73.2	28%	52%
67	81	20.9	93	97	3.9	9	5	-44.4	33	42	54.5	42.9	54%	59%
40	41	2.5	59	51	-13.0	0	0	0	8	13	25.0	38.5	53%	41%
203	209	3.0	232	231	-0.4	46	23	-50.0	93	80	64.5	57.5	52%	49%
496	459	-7.5	793	812	2.4	38	46	21.1	200	175	46.0	51.4	50%	53%
61	62	1.6	52	40	-23.1	8	4	-50.0	44	42	56.8	71.4	38%	45%
969	912	-5.9	1,270	1,351	6.4	27	16	-40.7	454	410	41.2	43.4	60%	58%
279	266	-4.7	229	252	10.0	23	34	47.8	149	132	46.3	59.8	51%	66%
1,057	1,051	-0.6	1,457	1,565	7.5	103	56	-45.6	409	432	55.3	53.5	67%	69%
248	239	-3.6	316	267	-15.3	6	13	116.7	104	96	41.3	56.3	65%	47%
59	67	13.6	49	48	-2.7	0	4	0	27	30	44.4	53.3	**	**
122	116	-4.9	111	118	6.3	11	11	0.0	71	45	49.3	71.1	57%	66%
136	144	5.9	172	141	-17.9	24	18	-25.0	59	56	42.4	71.4	60%	57%
202	203	0.5	296	294	-0.9	11	13	18.2	99	101	53.5	42.6	39%	64%
131	169	29.0	118	126	7.4	11	8	-27.3	93	97	55.9	64.9	90%	73%
62	74	19.4	92	84	-8.3	3	13	333.3	16	33	56.3	48.5	50%	56%
137	139	1.5	154	146	-5.2	9	0	-100.0	62	63	64.5	47.6	58%	47%
101	98	-3.0	67	74	10.0	14	5	-64.3	38	56	50.0	60.7	32%	27%
374	377	0.8	361	377	4.3	23	2	-91.3	175	180	54.3	55.0	56%	59%
80	90	12.5	74	68	-7.7	5	5	0.0	32	43	43.8	51.2	43%	53%
3,728	3,734	0.2	6,657	6,719	0.9	186	203	9.1	1,619	1,514	40.3	42.9	60%	63%
134	151	12.7	156	159	2.1	5	9	80.0	59	61	52.5	44.3	33%	57%
67	56	-16.4	153	167	9.2	5	11	120.0	22	13	77.3	76.9	60%	78%
291	250	-14.1	151	162	7.3	19	9	-52.6	153	139	62.1	62.6	71%	70%
252	234	-7.1	241	292	21.2	18	18	0.0	142	107	52.8	55.1	47%	63%
200	190	-5.0	172	183	6.4	18	12	-33.3	106	98	33.0	51.0	80%	67%
71	90	26.8	95	103	8.0	8	10	25.0	14	21	71.4	42.9	63%	68%
67	77	14.9	103	119	15.5	9	24	166.7	13	22	53.8	54.5	73%	67%
1,491	1,476	-1.0	1,728	1,899	9.9	70	44	-37.1	717	664	46.9	47.0	59%	66%
303	301	-0.7	238	234	-1.7	8	12	50.0	146	117	44.5	53.8	53%	60%
87	115	32.2	129	131	1.5	4	4	0.0	40	57	62.5	45.6	30%	38%
51	42	-17.6	66	58	-12.1	6	4	-33.3	20	14	60.0	57.1	63%	26%
235	293	24.7	316	302	-4.6	5	5	0.0	108	125	53.7	54.4	61%	58%
878	872	-0.7	1,089	981	-9.9	31	39	25.8	439	390	37.1	39.2	67%	69%
1,356	1,315	-3.0	1,654	1,785	7.9	50	63	26.0	527	462	38.7	47.4	67%	64%
74	102	37.8	63	84	33.2	18	17	-5.6	34	48	55.9	60.4	48%	35%
2,911	2,903	-0.3	4,341	4,208	-3.1	170	135	-20.6	1,351	1,234	46.3	51.6	52%	49%
1	3	200.0	3	4	33.3	0	0	0	1	1	100.0	0.0	0%	0%
72	65	-9.7	143	135	-5.4	8	9	12.5	29	13	37.9	30.8	73%	59%
249	282	13.3	256	248	-3.3	11	6	-45.5	132	149	54.5	57.7	67%	71%
25	19	-24.0	20	23	15.0	0	2	0	12	12	58.3	33.3	**	**

¹In some cases the Michigan number is slightly different from the county total.

*Data is unavailable.

Data sources: Unemployment: Bureau of Labor Statistics, Local Area Unemployment Statistics; Public Assistance: Michigan Department of Human Services.

 Prepared by: Michigan League for Human Services	Unemployment (data not seasonally adjusted)						Food Assistance Program					
	Unemployment Rate			Number Unemployed			Total Number of Applications			Average Number of Households Receiving Food Assistance Per Month		
	Qtr 2 2005	Qtr 2 2006	% change	Qtr 2 2005	Qtr 2 2006	% change	Qtr 2 2005	Qtr 2 2006	% change	Qtr 2 2005	Qtr 2 2006	% change
Lenawee	6.6	6.7	1.5	3,307	3,358	1.6	1,108	1,275	15.1	3,228	3,601	11.6
Livingston	5.1	4.5	-11.7	4,805	4,188	-12.8	776	900	16.0	2,092	2,428	16.1
Luce	7.9	7.5	-5.1	223	215	-3.9	55	85	54.5	365	382	4.6
Mackinac	8.5	8.1	-5.1	538	511	-5.1	87	104	19.5	374	369	-1.2
Macomb	6.7	6.4	-5.0	28,357	26,781	-5.6	6,869	8,175	19.0	23,389	26,105	11.6
Manistee	7.3	7.8	5.9	906	961	6.1	345	316	-8.4	1,350	1,417	5.0
Marquette	5.7	5.8	0.6	2,042	2,097	2.7	610	703	15.2	2,568	2,796	8.9
Mason	7.1	6.9	-2.8	1,104	1,091	-1.1	341	421	23.5	1,545	1,683	8.9
Mecosta	6.9	6.7	-2.4	1,374	1,357	-1.3	550	535	-2.7	2,583	3,012	16.6
Menominee	5.3	6.3	19.6	722	889	23.1	254	244	-3.9	1,067	1,127	5.6
Midland	5.9	5.6	-5.1	2,488	2,341	-5.9	788	860	9.1	3,217	3,488	8.4
Missaukee	6.9	6.5	-4.9	470	453	-3.6	135	170	25.9	655	689	5.2
Monroe	5.9	5.7	-2.8	4,666	4,565	-2.2	1,359	1,410	3.8	4,363	4,903	12.4
Montcalm	7.9	12.8	61.6	2,377	3,736	57.1	632	749	18.5	2,835	3,228	13.9
Montmorency	11.2	10.7	-4.7	496	466	-6.0	87	114	31.0	606	680	12.3
Muskegon	6.8	6.4	-5.9	6,224	5,958	-4.3	3,017	3,573	18.4	13,039	14,084	8.0
Newaygo	7.0	6.3	-9.1	1,646	1,517	-7.8	544	671	23.3	2,457	2,663	8.4
Oakland	5.7	5.2	-7.6	36,416	33,320	-8.5	9,541	10,627	11.4	25,975	28,388	9.3
Oceana	7.3	7.9	7.7	1,069	1,171	9.5	786	767	-2.4	1,738	1,848	6.3
Ogemaw	7.2	7.3	1.9	722	747	3.4	308	266	-13.6	1,709	1,869	9.3
Ontonagon	7.8	7.9	1.3	279	284	1.7	64	60	-6.3	362	383	5.7
Osceola	7.4	6.4	-14.3	778	682	-12.4	271	257	-5.2	1,431	1,394	-2.6
Oscoda	10.2	9.9	-3.0	400	391	-2.3	104	102	-1.9	625	628	0.6
Otsego	6.9	7.5	9.7	898	1,002	11.6	258	296	14.7	1,118	1,277	14.3
Ottawa	5.0	4.8	-4.0	6,921	6,789	-1.9	1,631	1,872	14.8	5,121	5,497	7.3
Presque Isle	9.6	10.4	8.0	611	659	7.8	119	92	-22.7	553	571	3.3
Roscommon	7.8	7.8	0.0	888	907	2.1	303	349	15.2	1,845	1,935	4.8
Saginaw	7.9	7.2	-8.1	7,910	7,336	-7.3	3,754	4,078	8.6	14,351	15,425	7.5
Saint Clair	7.7	7.0	-9.9	6,605	5,877	-11.0	2,020	2,432	20.4	7,239	8,118	12.1
Saint Joseph	6.4	5.8	-9.3	2,009	1,844	-8.2	877	930	6.0	2,927	3,242	10.8
Sanilac	8.1	8.0	-1.6	1,809	1,822	0.7	429	490	14.2	2,264	2,454	8.4
Schoolcraft	10.3	9.9	-4.2	424	413	-2.7	84	106	26.2	502	517	3.1
Shiawassee	7.5	7.4	-0.4	2,773	2,811	1.4	807	916	13.5	3,140	3,415	8.8
Tuscola	7.9	7.8	-1.7	2,372	2,390	0.8	526	572	8.7	2,252	2,526	12.2
Van Buren	6.5	6.1	-6.2	2,634	2,513	-4.6	1,498	1,667	11.3	4,471	4,796	7.3
Washtenaw	4.4	4.2	-3.8	8,317	8,130	-2.2	2,971	3,370	13.4	8,424	9,959	18.2
Wayne	8.6	7.7	-10.5	77,715	68,554	-11.8	42,182	45,630	8.2	150,510	163,232	8.5
Wexford	7.4	7.2	-3.1	1,117	1,099	-1.6	447	577	29.1	2,035	2,210	8.6

FACT

The Michigan, the minimum wage has been raised to \$7.40 in three steps. The first step will take place in October 2006, when the minimum wage for most employees will increase to \$6.95.

¹In some cases the Michigan number is slightly different from the county total.

Data sources: Unemployment: Bureau of Labor Statistics, Local Area Unemployment Statistics; Public Assistance: Michigan Department of Human Services.

Family Independence Program (Cash Assistance)

Total Number of Applications			Average Number of Families Receiving Cash Assistance Per Month			Application Approvals: Unemployment Benefits Exhausted, Layoff or Discharge, Depleted Savings, Non-Exempt Property or Loss of Other Resources			Total Number of Denials		Income Exceeds Standards as Percent of Denials		Percent of Cases Without Earned Income, Out of Total Cases Expected to Work	
Qtr 2 2005	Qtr 2 2006	% change	Qtr 2 2005	Qtr 2 2006	% change	Qtr 2 2005	Qtr 2 2006	% change	Qtr 2 2005	Qtr 2 2006	Qtr 2 2005	Qtr 2 2006	Qtr 2 2005	Qtr 2 2006
375	404	7.7	359	379	5.8	11	1	-90.9	187	190	55.1	55.3	42%	45%
278	323	16.2	143	153	7.0	16	13	-18.8	191	221	51.3	60.6	55%	46%
22	31	40.9	31	25	-20.2	0	1	0	13	16	30.8	75.0	54%	59%
32	32	0.0	37	28	-24.5	5	1	-80.0	17	16	58.8	50.0	0%	0%
2,117	2,376	12.2	2,509	2,719	8.3	117	118	0.9	1,102	1,090	45.6	52.0	66%	65%
107	103	-3.7	121	136	12.7	16	11	-31.3	49	35	46.9	68.6	51%	55%
171	167	-2.3	240	264	10.1	27	9	-66.7	50	52	48.0	51.9	65%	60%
139	164	18.0	226	207	-8.5	7	17	142.9	55	77	54.5	53.2	60%	42%
148	193	30.4	209	249	18.9	10	10	0.0	45	64	46.7	37.5	77%	61%
95	63	-33.7	77	72	-6.1	9	2	-77.8	33	24	30.3	29.2	50%	34%
282	267	-5.3	332	349	5.2	24	23	-4.2	136	135	47.8	48.1	48%	47%
65	66	1.5	66	65	-2.5	0	4	0	29	32	34.5	40.6	**	**
474	531	12.0	603	632	4.8	21	13	-38.1	229	227	47.2	56.4	67%	61%
258	296	14.7	284	328	15.2	29	31	6.9	136	137	48.5	55.5	68%	67%
33	35	6.1	43	48	11.7	3	5	66.7	16	14	68.8	64.3	52%	36%
1,238	1,346	8.7	2,694	2,771	2.9	86	75	-12.8	451	415	47.2	47.7	71%	68%
193	244	26.4	267	264	-1.1	11	0	-100.0	75	82	24.0	51.2	67%	66%
2,666	2,994	12.3	3,329	3,368	1.2	111	96	-13.5	1,431	1,607	48.0	54.2	66%	70%
147	147	0.0	333	314	-5.7	20	15	-25.0	41	59	56.1	45.8	62%	56%
107	97	-9.3	164	157	-3.9	11	27	145.5	35	28	57.1	75.0	58%	64%
21	21	0.0	40	39	-2.5	3	2	-33.3	6	10	83.3	60.0	27%	34%
114	98	-14.0	181	159	-12.2	8	14	75.0	51	32	56.9	59.4	**	**
28	36	28.6	58	54	-6.4	3	6	100.0	9	12	33.3	66.7	34%	25%
105	76	-27.6	84	82	-2.0	3	2	-33.3	47	42	66.0	69.0	49%	50%
477	500	4.8	482	471	-2.3	24	25	4.2	201	234	46.8	50.9	66%	73%
39	44	12.8	44	40	-9.0	2	1	-50.0	23	10	60.9	60.0	0%	67%
111	128	15.3	161	172	6.8	1	4	300.0	37	56	37.8	51.8	54%	50%
1,513	1,449	-4.2	2,954	2,961	0.3	123	110	-10.6	735	602	36.6	39.9	50%	49%
745	881	18.3	1,004	1,037	3.4	85	88	3.5	323	367	43.0	54.2	58%	63%
367	303	-17.4	319	375	17.6	27	21	-22.2	171	144	47.4	47.9	61%	58%
161	176	9.3	224	229	2.5	36	48	33.3	77	46	42.9	56.5	53%	57%
28	31	10.7	61	47	-22.0	3	5	66.7	3	17	33.3	29.4	53%	86%
340	328	-3.5	302	292	-3.2	19	13	-31.6	141	135	39.7	58.5	47%	54%
206	208	1.0	253	260	2.8	15	17	13.3	91	77	46.2	58.4	57%	54%
459	413	-10.0	598	572	-4.4	46	35	-23.9	191	162	47.6	53.7	61%	68%
891	1,006	12.9	1,225	1,249	1.9	18	14	-22.2	391	397	41.4	48.1	66%	63%
13,280	14,015	5.5	33,288	33,531	0.7	479	386	-19.4	5,353	5,037	37.7	40.4	70%	70%
166	229	38.0	235	257	9.3	21	23	9.5	67	96	46.3	59.4	67%	67%

FACT

Michigan's governor has just signed legislation to put into place a state earned income tax credit. Michigan's low- and middle-income workers will be able to get a refund on a portion of the amount they pay in state taxes, beginning in tax year 2008.

¹In some cases the Michigan number is slightly different from the county total.

*Data is unavailable.

Data sources: Unemployment: Bureau of Labor Statistics, Local Area Unemployment Statistics; Public Assistance: Michigan Department of Human Services.

Employment Trends by Selected Industries in Michigan
(data not seasonally adjusted, rounded to the nearest hundred)

Industry	Avg 2005 Qtr 2	Avg 2006 Qtr 2	% Change	Industry	Avg 2005 Qtr 2	Avg 2006 Qtr 2	% Change
TOTAL NONFARM	4,424,100	4,407,300	-0.4	Trade Transportation & Utilities	805,800	794,800	-1.4
TOTAL PRIVATE	3,741,100	3,725,400	-0.4	•Wholesale Trade	171,400	171,600	0.1
GOODS PRODUCING	885,500	865,800	-2.2	Merchant Wholesalers			
SERVICE-PROVIDING	3,538,500	3,541,600	0.1	Durable Goods	97,300	97,600	0.3
Natural Resources and Mining	8,700	8,700	0.0	Merchant Wholesalers			
Mining	7,100	7,200	1.4	Nondurable Goods	49,900	49,900	0.0
Mining except oil and gas	5,000	5,000	0.0	Wholesale Electronic Markets			
Construction	193,900	195,100	0.6	and Agents and Brokers	24,300	24,100	-0.8
Construction of Buildings	46,400	47,100	1.5	•Retail Trade	506,300	493,900	-2.4
Heavy and Civil Engineering	19,800	19,900	0.5	Motor Vehicle and Parts Dealers	62,000	60,800	-1.9
Specialty Trade Contractors	127,700	128,100	0.3	Furniture and Home Furnishings	18,100	17,700	-2.2
Manufacturing	682,900	661,900	-3.1	Electronics and Appliance	17,500	17,800	1.7
•Durable Goods	533,400	514,200	-3.6	Building Material and Garden			
Nonmetallic Mineral Products	16,700	16,400	-1.8	Equip. and SuppliesDealers	48,300	49,300	2.1
Primary Metal Manufacturing	26,900	26,200	-2.6	Food and Beverage Stores	85,600	84,100	-1.8
Fabricated Metal Product	84,700	84,400	-0.4	Health and Personal Care	33,200	33,100	-0.3
Machinery Manufacturing	74,900	73,900	-1.3	Gasoline Stations	25,600	24,900	-2.7
Computer and Electronic Products	20,200	20,800	3.0	Clothing and Clothing Accessories	40,300	40,900	1.5
Electrical Equipment and				Sporting Goods, Hobby, Book,			
Appliances	13,500	10,900	-19.3	and Music Stores	23,100	22,900	-0.9
Motor Vehicle Manufacturing	65,500	61,000	-6.9	General Merchandise Stores	111,600	107,900	-3.3
Motor Vehicle Parts				Miscellaneous Store Retail	29,600	28,500	-3.7
Manufacturing	161,100	155,400	-3.5	•Transportation & Warehousing	128,000	129,300	1.0
Furniture and Related Products	25,500	24,900	-2.4	Rail Transportation	5,000	4,900	-2.0
Miscellaneous Manufacturing	17,600	17,500	-0.6	Truck Transportation	37,800	39,700	5.0
•Non-Durable Goods	149,500	147,700	-1.2	Couriers and Messengers	11,900	11,600	-2.5
Food Manufacturing	32,600	32,800	0.6	Warehousing and Storage	15,500	15,900	2.6
Paper Manufacturing	14,900	15,000	0.7	Information	67,900	67,000	-1.3
Printing and Related Support				Publishing Industries	24,700	24,200	-2.0
Activities	18,000	17,500	-2.8	Telecommunications	22,100	21,900	-0.9
Chemical Manufacturing	30,200	29,700	-1.7	Financial Activities	219,300	221,000	0.8
Plastics and Rubber Products	42,400	41,800	-1.4	Finance and Insurance	162,400	164,500	1.3
				Real Estate	38,500	37,900	-1.6

Note: Industry details and subtotals may not sum to totals due to rounding.

Source: Department of Labor and Economic Growth/Office of Labor Market Information, Current Employment Statistics Section - (800) 225-3732

Employment Trends by Selected Industries in Michigan
(data not seasonally adjusted, rounded to the nearest hundred)

Industry	Avg 2005 Qtr 2	Avg 2006 Qtr 2	% Change	Industry	Avg 2005 Qtr 2	Avg 2006 Qtr 2	% Change
Professional & Business Services	594,700	602,200	1.3	Food Services and Drinking	313,500	315,400	0.6
Legal Services	29,700	29,700	0.0	Other Services	179,700	179,600	-0.1
Accounting and Tax Preparation	27,800	29,300	5.4	Repair and Maintenance	42,200	41,100	-2.6
Architectural Engineering	70,900	71,300	0.6	Personal and Laundry Services	41,800	42,000	0.5
Computer Systems Design	38,400	38,800	1.0	Religious Grantmaking Civic Professional	95,700	96,500	0.8
Management, Scientific and Technical Consulting Services	19,000	19,800	4.2	Government	683,000	681,900	-0.2
Scientific Research and Development Services	23,700	24,400	3.0	• Federal Government	54,700	54,700	0.0
Advertising and Related	16,000	15,500	-3.1	Federal Government Hospital Services	5,800	5,700	-1.7
Other Professional Scientific and Technical Services	15,400	15,700	1.9	U.S. Postal Service	27,400	27,700	1.1
Management of Companies	65,000	63,700	-2.0	• State Government	164,500	163,800	-0.4
Administrative & Support Services	283,800	289,600	2.0	State Government Educational Services	92,600	92,200	-0.4
Educational and Health Services	571,800	575,700	0.7	State Government Hospital Services	14,400	15,000	4.2
• Educational Services	78,100	78,500	0.5	• Local Government	463,700	463,400	-0.1
(see also Government)				Local Government Educational Services	275,100	272,100	-1.1
• Health Care & Social Assistance	493,700	497,200	0.7	Local Government Hospitals	13,700	13,900	1.5
Ambulatory Health Care Services	165,400	166,500	0.7	Local Government Elementary and Secondary Schools	254,000	251,600	-0.9
Offices of Physicians	66,200	66,600	0.6	Local Government Junior Colleges	20,400	19,900	-2.5
Offices of Dentists	31,800	32,000	0.6				
Offices of Other Health Professionals	19,500	19,600	0.5				
Outpatient Care Centers	13,700	13,800	0.7				
Home Health Care Service	24,700	24,900	0.8				
Hospitals	181,000	182,200	0.7				
Nursing and Residential Care	89,600	90,300	0.8				
—Nursing Care Facilities	41,500	41,600	0.2				
—Community Care Facilities	22,800	23,000	0.9				
Social Assistance	57,700	58,300	1.0				
—Individual and Family Services	24,800	25,000	0.8				
Leisure and Hospitality	416,400	419,200	0.7				
Performing Arts Spectator Activities	10,000	9,900	-1.0				
Amusement, Gambling & Recreation	54,000	55,000	1.9				
Accommodation	34,600	34,700	0.3				

VISIT OUR WEBSITE FOR MORE INFORMATION!

The "Work and Wages" section of the Michigan League for Human Services website has information on Workforce Development, Work Supports, Unemployment, and Self-Sufficiency. It also includes back issues of the Economic Security Bulletin. Go to <http://www.MiLHS.org> and click the "Work and Wages" tab at the right.

Note: Industry details and subtotals may not sum to totals due to rounding.

Source: Department of Labor and Economic Growth/Office of Labor Market Information, Current Employment Statistics Section - (800) 225-3732



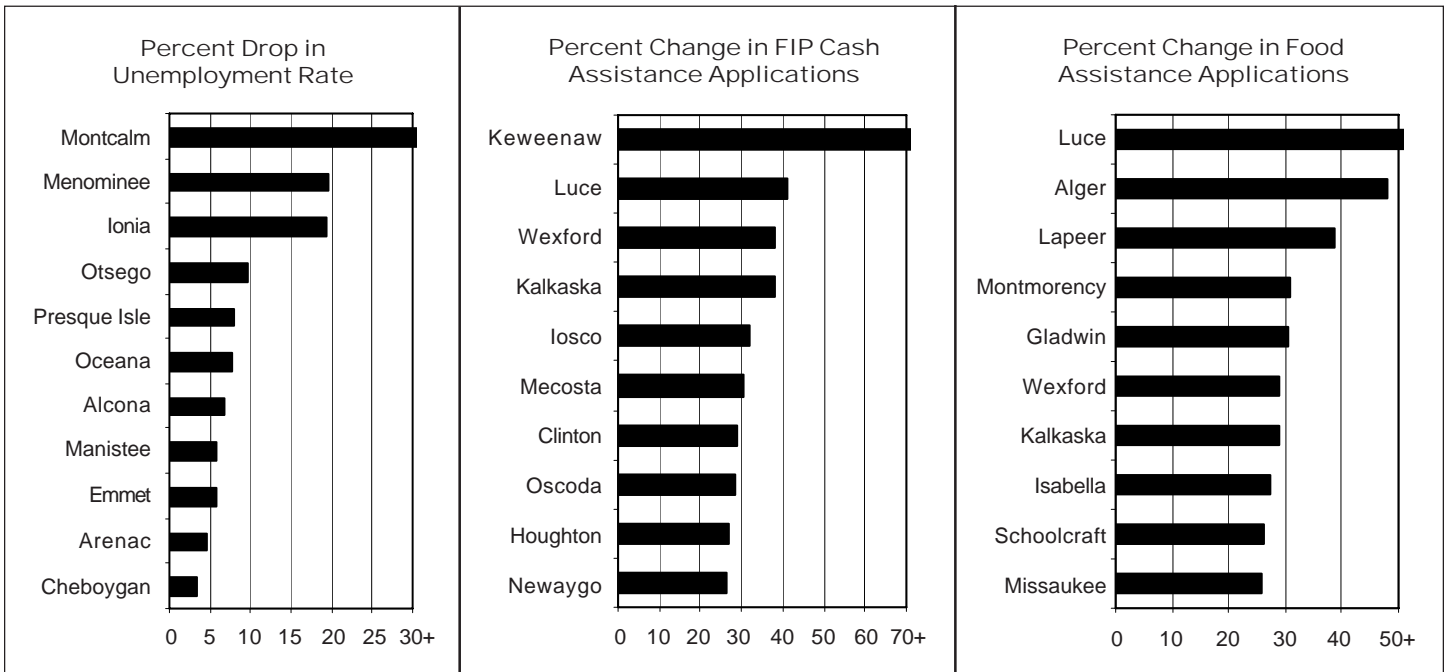
Michigan League for Human Services

1115 South Pennsylvania Avenue, Suite 202
 Lansing, MI 48912-1658
 (517) 487-5436 — Fax (517) 371-4546
 Web site: www.milhs.org

A United Way Agency

Nonprofit
 Organization
 U.S. Postage
Paid
 Lansing, MI
 Permit #1421

Percentage Change in Michigan Counties With Largest Increases
 Second Quarter 2005 — Second Quarter 2006



Sources: Unemployment: Bureau of Labor Statistics, Local Area Unemployment Statistics; Public Assistance: Michigan Department of Human Services