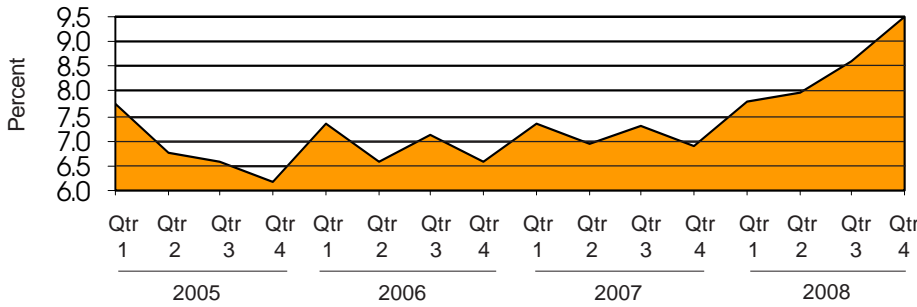


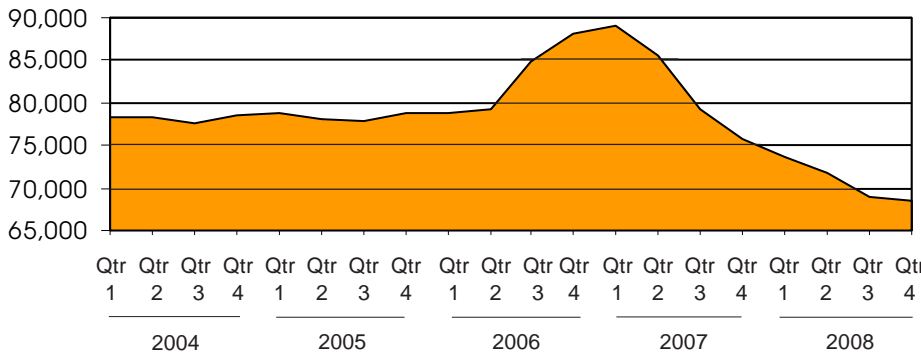


Michigan's Unemployment Rate Over the Past Four Years
(not seasonally adjusted)



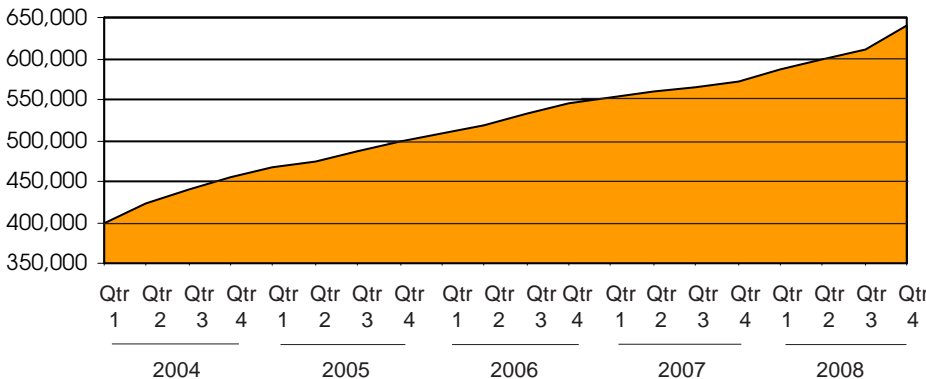
Source: Bureau of Labor Statistics

Family Independence Program Cases During
the Past Five Years (regular FIP only)



Source: Michigan Department of Human Services

Food Assistance Households Over the Past Five Years



Source: Michigan Department of Human Services

Unemployment climbs, but FIP remains unavailable for many families.

Unemployment


Unemployment was 9.5 (not seasonally adjusted) for the October-December 2008 quarter, up from 8.6 the previous quarter and 6.9 one year before. Michigan continues to lead the nation in unemployment. Sectors experiencing the largest job loss continue to be in motor vehicle and parts manufacturing and in construction.

Public Assistance

Having risen to nearly 90,000 in early 2007, the state's Family Independence Program (FIP) caseload took a dramatic dip, leveling out at 68,420 cases (excluding E-FIP) in the fourth quarter of 2008. (Cases rose slightly in January and February 2009.) Food Assistance cases continue to rise, reaching a high of 639,215 households. 16.7 percent of Michigan's population were eligible for Medicaid; however, many families do not have access to health care providers that accept it.

**IMPORTANT CHANGES
IN THIS ISSUE:**

- 1) Due to a change in publications of the Department of Human Services, the Economic Security Bulletin will now publish data for total FIP caseloads (including E-FIP) in the table on pages 2-5. However, because E-FIP provides a grant of only \$10 per month for federal counting purposes, these cases will not be included in the front tables and text.
- 2) The DHS did not publish application data for this quarter, and consequently the data cannot be included in this edition of the bulletin.

 Prepared by: Michigan League for Human Services	Unemployment (data not seasonally adjusted)						Food Assistance Program					
	Unemployment Rate			Number Unemployed			Total Number of Applications			Average Number of Households Receiving Food Assistance Per Month		
	County	Qtr 4 2007	Qtr 4 2008	+/- points	Qtr 4 2007	Qtr 4 2008	% change	Qtr 4 2007	Qtr 4 2008	% change	Qtr 4 2007	Qtr 4 2008
Michigan¹	6.9	9.5	2.6	344,075	463,368	34.7	156,055	*	*	572,919	639,215	11.6
Alcona	9.5	11.9	2.4	406	513	26.3	161	*	*	569	601	5.6
Alger	7.9	10.2	2.3	339	430	27.0	107	*	*	368	430	17.0
Allegan	6.1	8.1	2.0	3,394	4,477	31.9	1,411	*	*	4,300	4,960	15.4
Alpena	7.8	9.5	1.7	1,158	1,390	20.0	605	*	*	2,316	2,519	8.8
Antrim	8.0	11.5	3.4	922	1,340	45.4	333	*	*	1,007	1,198	19.0
Arenac	9.6	12.5	2.9	724	924	27.6	271	*	*	1,188	1,345	13.2
Baraga	11.9	15.2	3.3	512	649	26.8	146	*	*	484	501	3.6
Barry	4.8	7.1	2.2	1,508	2,180	44.5	684	*	*	2,422	2,716	12.1
Bay	6.3	8.1	1.8	3,443	4,369	26.9	1,531	*	*	7,096	7,670	8.1
Benzie	7.6	9.4	1.8	682	831	21.8	262	*	*	711	881	23.9
Berrien	6.6	8.6	2.0	5,331	6,868	28.8	3,144	*	*	10,336	11,363	9.9
Branch	6.8	9.5	2.7	1,487	2,103	41.4	687	*	*	2,428	2,721	12.1
Calhoun	6.4	8.3	1.9	4,436	5,599	26.2	2,760	*	*	11,025	12,542	13.8
Cass	5.8	7.5	1.6	1,645	2,032	23.5	786	*	*	2,746	3,306	20.4
Charlevoix	8.5	12.3	3.7	1,160	1,661	43.2	288	*	*	898	1,034	15.1
Cheboygan	10.3	11.6	1.3	1,263	1,410	11.6	468	*	*	1,659	1,875	13.0
Chippewa	7.8	9.6	1.8	1,379	1,663	20.6	595	*	*	1,836	2,030	10.5
Clare	10.0	12.5	2.4	1,297	1,570	21.0	653	*	*	2,895	3,142	8.5
Clinton	5.0	6.2	1.2	1,924	2,304	19.8	500	*	*	1,877	2,304	22.8
Crawford	7.6	10.3	2.7	502	667	32.8	301	*	*	923	1,060	14.9
Delta	7.2	8.9	1.7	1,426	1,737	21.8	579	*	*	2,302	2,548	10.7
Dickinson	5.6	7.7	2.1	814	1,103	35.6	294	*	*	1,158	1,294	11.7
Eaton	4.7	7.1	2.4	2,780	4,112	47.9	1,309	*	*	3,887	4,244	9.2
Emmet	8.9	11.1	2.2	1,717	2,171	26.4	479	*	*	1,399	1,700	21.5
Genesee	7.8	11.3	3.5	16,098	22,207	38.0	10,160	*	*	37,410	40,476	8.2
Gladwin	9.0	12.4	3.3	946	1,273	34.6	400	*	*	1,831	1,994	8.9
Gogebic	7.1	9.6	2.4	531	708	33.3	225	*	*	1,160	1,251	7.8
Gr. Traverse	6.2	7.9	1.7	2,998	3,773	25.9	1,421	*	*	3,902	4,525	16.0
Gratiot	8.0	9.8	1.8	1,577	1,889	19.7	599	*	*	2,218	2,453	10.6
Hillsdale	8.1	11.2	3.0	1,803	2,434	35.0	619	*	*	2,352	2,685	14.1
Houghton	6.2	7.5	1.3	1,109	1,332	20.1	400	*	*	1,831	1,950	6.5
Huron	7.0	9.4	2.3	1,161	1,499	29.0	262	*	*	1,707	1,860	9.0
Ingham	5.6	7.7	2.1	8,502	11,488	35.1	4,936	*	*	17,821	20,076	12.7
Ionia	6.5	9.0	2.5	2,027	2,792	37.7	929	*	*	3,131	3,447	10.1
Iosco	9.3	10.9	1.6	1,014	1,184	16.8	460	*	*	2,086	2,229	6.9
Iron	6.9	8.9	2.0	410	514	25.1	155	*	*	641	709	10.6
Isabella	4.8	6.0	1.2	1,865	2,314	24.0	1,475	*	*	4,283	6,172	44.1
Jackson	7.2	9.5	2.3	5,475	7,154	30.7	2,698	*	*	9,202	10,093	9.7
Kalamazoo	4.9	6.7	1.8	6,599	8,954	35.7	3,991	*	*	15,309	17,202	12.4
Kalkaska	7.5	9.8	2.2	661	848	28.3	357	*	*	1,129	1,256	11.2
Kent	5.5	7.4	1.9	17,848	23,740	33.0	9,648	*	*	32,013	35,413	10.6
Keweenaw	11.7	12.7	1.0	131	139	6.0	17	*	*	85	98	14.8
Lake	10.1	13.4	3.3	407	529	29.9	230	*	*	1,152	1,246	8.2
Lapeer	8.1	9.8	1.7	3,592	4,334	20.7	833	*	*	2,985	3,612	21.0
Leelanau	5.1	6.2	1.0	587	690	17.6	154	*	*	391	458	17.1
Lenawee	7.6	10.3	2.7	3,833	5,069	32.3	1,362	*	*	4,282	5,159	20.5
Livingston	5.6	7.1	1.4	5,297	6,585	24.3	1,161	*	*	2,992	3,883	29.8
Luce	9.4	10.4	1.0	253	278	9.8	71	*	*	438	467	6.6
Mackinac	11.6	13.0	1.4	661	765	15.7	150	*	*	352	484	37.5
Macomb	7.7	9.3	1.5	32,183	38,216	18.7	9,078	*	*	30,599	36,162	18.2

¹In some cases the Michigan number is slightly different from the county total.

*Data is unavailable or cannot be calculated.

Data sources: Unemployment: Bureau of Labor Statistics, Local Area Unemployment Statistics; Public Assistance: Michigan Department of Human Services.


Family Independence Program (Cash Assistance)									Medicaid							
Total Number of Applications			Average Number of Families Receiving Cash Assistance Per Month			Percent of Cases Without Earned Income, Out of Total Cases Expected to Work		Total Number of Applications			Average Number of Persons Eligible for Medicaid ONLY (Excludes FIP & SSI Recipients)			Percent of Population Eligible for Medicaid (Includes FIP & SSI Recipients) ²		
																Qtr 4 2007
44,468	*	*	82,036	73,680	-10.2	55%	60%	164,530	*	*	1,091,592	1,246,316	14.2	15.2%	16.7%	
34	*	*	28	21	-25.9	65%	54%	245	*	*	1,324	1,354	2.2	14.1%	14.0%	
32	*	*	27	22	-19.8	24%	33%	176	*	*	1,116	1,211	8.5	14.2%	15.3%	
405	*	*	423	385	-9.0	37%	44%	1,982	*	*	12,269	14,214	15.9	13.2%	14.8%	
157	*	*	200	194	-2.8	33%	33%	593	*	*	4,478	4,738	5.8	19.9%	21.0%	
88	*	*	65	50	-24.0	*	*	373	*	*	3,182	3,493	9.8	15.4%	16.6%	
77	*	*	107	98	-9.0	53%	45%	350	*	*	2,483	2,643	6.4	19.8%	21.0%	
32	*	*	53	47	-11.3	60%	25%	139	*	*	1,078	1,234	14.5	16.2%	18.0%	
199	*	*	243	219	-10.1	37%	34%	880	*	*	5,874	6,457	9.9	12.1%	13.0%	
467	*	*	791	683	-13.6	39%	45%	1,529	*	*	12,995	14,210	9.3	16.3%	17.2%	
75	*	*	49	39	-19.9	48%	41%	358	*	*	2,108	2,415	14.6	14.2%	16.0%	
1,029	*	*	1,448	1,216	-16.1	47%	63%	3,520	*	*	20,473	22,899	11.8	18.1%	19.3%	
288	*	*	344	282	-17.8	45%	51%	1,006	*	*	6,022	6,981	15.9	16.8%	18.7%	
944	*	*	1,752	1,688	-3.7	52%	*	2,977	*	*	17,802	20,089	12.8	19.4%	21.1%	
238	*	*	304	321	5.5	50%	58%	911	*	*	6,544	7,572	15.7	16.5%	18.7%	
73	*	*	62	53	-14.0	*	*	346	*	*	2,821	3,123	10.7	12.4%	13.5%	
160	*	*	140	106	-24.5	31%	43%	651	*	*	4,201	4,672	11.2	19.1%	20.9%	
153	*	*	182	157	-13.6	39%	43%	814	*	*	4,419	4,793	8.5	14.6%	15.4%	
214	*	*	315	265	-15.9	65%	59%	911	*	*	5,229	5,617	7.4	23.5%	24.6%	
152	*	*	131	114	-12.7	24%	31%	671	*	*	4,542	5,477	20.6	7.9%	9.2%	
96	*	*	90	67	-25.5	32%	48%	356	*	*	2,106	2,278	8.1	18.2%	19.1%	
145	*	*	159	147	-7.3	36%	33%	638	*	*	4,955	5,497	10.9	16.7%	18.1%	
71	*	*	52	48	-8.3	36%	38%	439	*	*	3,576	3,775	5.6	15.5%	16.2%	
358	*	*	386	252	-34.9	36%	34%	1,357	*	*	9,030	10,120	12.1	10.5%	11.2%	
105	*	*	67	61	-9.4	33%	36%	549	*	*	4,273	4,916	15.1	14.8%	16.6%	
3,136	*	*	6,586	6,057	-8.0	60%	69%	10,575	*	*	56,668	64,921	14.6	20.2%	22.1%	
156	*	*	171	172	0.6	43%	52%	548	*	*	3,705	4,124	11.3	18.3%	20.2%	
74	*	*	164	169	2.8	69%	60%	271	*	*	2,211	2,226	0.7	18.8%	19.1%	
338	*	*	181	145	-20.1	24%	55%	1,763	*	*	10,002	11,496	14.9	13.6%	15.2%	
218	*	*	255	193	-24.3	27%	38%	845	*	*	5,654	6,441	13.9	17.1%	18.5%	
234	*	*	224	233	3.9	48%	48%	805	*	*	5,747	6,503	13.2	15.8%	17.7%	
69	*	*	94	69	-26.7	40%	63%	448	*	*	4,694	4,946	5.4	15.9%	16.3%	
79	*	*	141	93	-33.9	43%	56%	436	*	*	4,456	4,846	8.8	16.6%	17.6%	
1,313	*	*	1,664	1,410	-15.2	34%	45%	4,622	*	*	30,332	34,483	13.7	14.7%	16.0%	
314	*	*	267	228	-14.6	40%	61%	1,064	*	*	7,169	8,174	14.0	13.8%	15.4%	
132	*	*	151	144	-4.6	39%	46%	764	*	*	4,158	4,444	6.9	19.7%	21.2%	
43	*	*	66	41	-38.4	34%	26%	339	*	*	1,870	2,024	8.3	19.0%	20.1%	
235	*	*	313	220	-29.6	36%	41%	992	*	*	6,939	7,845	13.1	13.3%	14.3%	
800	*	*	1,084	995	-8.2	47%	61%	2,959	*	*	18,203	20,789	14.2	15.1%	16.9%	
1,196	*	*	1,892	1,759	-7.0	40%	48%	4,057	*	*	25,487	28,657	12.4	14.6%	15.7%	
101	*	*	75	51	-31.7	19%	39%	438	*	*	2,939	3,343	13.7	20.6%	22.6%	
2,558	*	*	4,434	4,246	-4.2	45%	56%	9,293	*	*	68,085	78,925	15.9	15.2%	16.9%	
7	*	*	4	0	-92.3	*	*	32	*	*	230	258	12.2	12.9%	13.6%	
71	*	*	110	85	-22.8	38%	44%	283	*	*	1,914	2,106	10.0	24.6%	26.1%	
276	*	*	305	260	-14.6	40%	50%	1,132	*	*	8,354	9,985	19.5	11.0%	12.8%	
44	*	*	20	10	-49.2	*	*	191	*	*	1,257	1,429	13.7	6.4%	7.1%	
403	*	*	462	396	-14.4	21%	42%	1,682	*	*	10,554	12,591	19.3	13.1%	15.1%	
333	*	*	213	227	6.7	20%	43%	1,358	*	*	8,881	10,876	22.5	5.6%	6.7%	
38	*	*	41	40	-0.8	65%	63%	195	*	*	1,009	1,112	10.2	19.9%	21.8%	
39	*	*	31	25	-18.3	80%	50%	252	*	*	1,202	1,336	11.1	13.3%	14.8%	
2,548	*	*	3,181	3,061	-3.8	55%	61%	9,245	*	*	72,960	85,329	17.0	11.1%	12.6%	

¹In some cases the Michigan number is slightly different from the county total.

² Population figures based on U.S. Census Bureau county estimates from July of the previous year

*Data is unavailable or cannot be calculated.

Data sources: Unemployment: Bureau of Labor Statistics, Local Area Unemployment Statistics; Public Assistance: Michigan Department of Human Services.

 Prepared by: Michigan League for Human Services	Unemployment (data not seasonally adjusted)						Food Assistance Program					
	Unemployment Rate			Number Unemployed			Total Number of Applications			Average Number of Households Receiving Food Assistance Per Month		
	Qtr 4 2007	Qtr 4 2008	+/- points	Qtr 4 2007	Qtr 4 2008	% change	Qtr 4 2007	Qtr 4 2008	% change	Qtr 4 2007	Qtr 4 2008	% change
Manistee	7.8	9.5	1.7	922	1,089	18.2	419	*	*	1,527	1,693	10.9
Marquette	5.4	7.1	1.6	1,971	2,529	28.3	798	*	*	3,060	3,526	15.2
Mason	7.5	9.7	2.2	1,112	1,424	28.0	442	*	*	1,774	2,009	13.3
Mecosta	6.7	8.9	2.1	1,393	1,808	29.8	884	*	*	3,685	4,426	20.1
Menominee	5.3	6.8	1.5	698	901	29.0	260	*	*	1,180	1,366	15.7
Midland	5.1	6.6	1.5	2,183	2,818	29.0	998	*	*	3,847	4,149	7.9
Missaukee	8.2	11.6	3.3	539	737	36.7	204	*	*	741	832	12.2
Monroe	6.8	9.4	2.5	5,256	7,070	34.5	1,656	*	*	5,475	6,582	20.2
Montcalm	9.6	11.9	2.3	2,602	3,218	23.6	898	*	*	3,733	4,311	15.5
Montmorency	12.7	15.4	2.7	521	637	22.2	193	*	*	776	830	7.0
Muskegon	6.8	9.9	3.1	6,081	8,804	44.8	4,102	*	*	16,089	17,691	10.0
Newaygo	7.0	9.9	2.9	1,651	2,319	40.5	778	*	*	2,969	3,309	11.4
Oakland	6.2	7.4	1.1	38,594	45,192	17.1	10,001	*	*	33,003	37,670	14.1
Oceana	8.1	11.4	3.3	1,148	1,610	40.2	499	*	*	1,873	2,136	14.0
Ogemaw	7.7	10.0	2.3	726	923	27.2	357	*	*	2,070	2,185	5.6
Ontonagon	7.4	9.2	1.8	252	312	23.8	76	*	*	399	441	10.6
Osceola	7.5	10.6	3.1	751	1,033	37.4	339	*	*	1,518	1,672	10.1
Oscoda	10.1	14.1	4.0	418	586	40.0	182	*	*	758	842	11.1
Otsego	9.0	11.1	2.0	1,116	1,375	23.2	446	*	*	1,517	1,740	14.7
Ottawa	5.4	7.6	2.2	7,399	10,178	37.6	2,216	*	*	6,073	7,351	21.0
Presque Isle	11.6	13.2	1.5	697	775	11.1	150	*	*	636	746	17.3
Roscommon	9.2	11.6	2.4	964	1,162	20.5	433	*	*	2,145	2,393	11.6
Saginaw	6.7	9.0	2.3	6,500	8,398	29.2	3,704	*	*	16,438	17,511	6.5
Saint Clair	8.9	11.2	2.3	7,436	9,339	25.6	2,666	*	*	9,408	10,775	14.5
Saint Joseph	6.2	9.5	3.3	1,981	3,025	52.6	1,128	*	*	3,420	4,142	21.1
Sanilac	8.3	11.8	3.4	1,812	2,467	36.2	542	*	*	2,745	3,144	14.5
Schoolcraft	9.5	11.1	1.6	367	425	15.7	134	*	*	548	593	8.2
Shiawassee	7.4	10.8	3.4	2,659	3,788	42.5	999	*	*	3,845	4,484	16.6
Tuscola	7.8	11.0	3.2	2,234	3,050	36.5	683	*	*	2,774	3,130	12.8
Van Buren	6.4	8.7	2.3	2,692	3,579	32.9	1,549	*	*	4,902	5,506	12.3
Washtenaw	4.5	6.1	1.5	8,630	11,198	29.8	3,910	*	*	12,486	14,185	13.6
Wayne	9.1	10.4	1.3	79,200	89,226	12.7	43,613	*	*	171,765	185,542	8.0
Wexford	8.3	13.3	4.9	1,209	1,913	58.2	651	*	*	2,607	2,936	12.6

FACT

The deadline for filing state and federal income tax forms is April 15, but local tax forms may have a later filing deadline.

¹In some cases the Michigan number is slightly different from the county total.

*Data is unavailable or cannot be calculated.

Data sources: Unemployment: Bureau of Labor Statistics, Local Area Unemployment Statistics; Public Assistance: Michigan Department of Human Services.

Family Independence Program (Cash Assistance)									Medicaid						
Total Number of Applications			Average Number of Families Receiving Cash Assistance Per Month			Percent of Cases Without Earned Income, Out of Total Cases Expected to Work		Total Number of Applications			Average Number of Persons Eligible for Medicaid ONLY (Excludes FIP & SSI Recipients)			Percent of Population Eligible for Medicaid (Includes FIP & SSI Recipients) ²	
136	*	*	132	136	3.5	56%	53%	464	*	*	3,130	3,295	5.3	16.3%	17.2%
132	*	*	199	181	-9.2	67%	44%	801	*	*	6,652	7,335	10.3	12.5%	13.4%
149	*	*	183	161	-12.2	36%	38%	576	*	*	4,042	4,545	12.5	17.8%	19.3%
195	*	*	204	190	-6.5	54%	41%	816	*	*	5,864	6,750	15.1	17.7%	19.9%
73	*	*	76	72	-5.7	18%	31%	360	*	*	2,905	3,265	12.4	14.3%	15.7%
304	*	*	380	244	-35.9	39%	44%	1,135	*	*	8,780	9,508	8.3	13.4%	13.9%
49	*	*	60	43	-28.5	*	*	226	*	*	1,929	2,136	10.7	15.2%	16.2%
526	*	*	697	661	-5.1	34%	40%	1,847	*	*	12,477	14,660	17.5	10.6%	12.1%
330	*	*	324	227	-29.9	52%	61%	1,250	*	*	8,872	10,398	17.2	17.8%	19.8%
43	*	*	47	36	-23.2	24%	47%	257	*	*	1,623	1,797	10.7	19.6%	21.0%
1,292	*	*	3,004	2,890	-3.8	61%	67%	3,914	*	*	23,542	26,532	12.7	21.3%	22.8%
241	*	*	295	233	-20.9	27%	53%	1,027	*	*	7,103	8,110	14.2	18.5%	20.3%
2,806	*	*	3,919	3,414	-12.9	47%	54%	10,870	*	*	73,994	86,744	17.2	8.3%	9.3%
168	*	*	300	246	-17.8	47%	55%	687	*	*	4,828	5,861	21.4	22.8%	26.2%
117	*	*	202	136	-32.6	31%	42%	459	*	*	3,801	4,223	11.1	23.6%	25.0%
22	*	*	22	26	20.0	53%	50%	125	*	*	936	958	2.3	16.6%	17.5%
109	*	*	127	102	-20.2	*	*	447	*	*	3,285	3,583	9.1	18.4%	19.5%
41	*	*	70	46	-33.5	26%	64%	292	*	*	1,451	1,586	9.3	21.2%	22.2%
131	*	*	128	124	-3.1	22%	33%	471	*	*	3,852	4,102	6.5	18.9%	20.2%
589	*	*	488	460	-5.7	30%	45%	2,611	*	*	19,196	22,682	18.2	8.7%	9.9%
43	*	*	50	39	-20.8	32%	28%	230	*	*	1,566	1,641	4.8	14.0%	14.7%
129	*	*	152	140	-7.7	32%	44%	523	*	*	3,968	4,415	11.3	19.9%	21.7%
1,324	*	*	2,646	2,504	-5.3	47%	60%	3,976	*	*	25,582	28,631	11.9	19.7%	21.3%
753	*	*	1,147	872	-24.0	40%	48%	3,026	*	*	18,720	22,136	18.2	14.4%	16.0%
362	*	*	387	426	10.2	45%	62%	1,521	*	*	9,318	11,090	19.0	18.3%	21.4%
157	*	*	182	173	-4.9	49%	47%	739	*	*	6,708	7,382	10.1	18.3%	20.1%
41	*	*	46	37	-19.6	53%	48%	177	*	*	1,281	1,399	9.2	19.3%	21.2%
322	*	*	373	373	0.2	35%	43%	1,310	*	*	8,979	10,156	13.1	15.6%	17.6%
158	*	*	278	259	-6.9	34%	43%	955	*	*	7,471	8,448	13.1	16.3%	18.1%
450	*	*	580	454	-21.7	43%	55%	1,809	*	*	11,528	13,643	18.3	19.1%	21.4%
900	*	*	1,346	1,122	-16.6	47%	42%	3,583	*	*	22,020	25,367	15.2	8.5%	9.4%
11,827	*	*	34,188	30,581	-10.6	63%	63%	40,918	*	*	263,079	298,351	13.4	21.8%	23.5%
202	*	*	263	205	-22.0	46%	48%	768	*	*	5,534	6,535	18.1	22.2%	25.1%

FACT

According to the Michigan State Housing Development Authority (MSHDA), the number of home foreclosures in Michigan went from 22,369 in 2005 to 103,829 in 2007—a 364% increase.

¹In some cases the Michigan number is slightly different from the county total.

² Population figures based on U.S. Census Bureau county estimates from July of the previous year

*Data is unavailable or cannot be calculated.

Data sources: Unemployment: Bureau of Labor Statistics, Local Area Unemployment Statistics; Public Assistance: Michigan Department of Human Services.

Employment Trends by Selected Industries in Michigan
(data not seasonally adjusted, rounded to the nearest hundred)

Industry	Avg 2007 Qtr 4	Avg 2008 Qtr 4	% Change	Industry	Avg 2007 Qtr 4	Avg 2008 Qtr 4	% Change
TOTAL NONFARM	4,281,700	4,160,200	-2.8	Wholesale Electronic Markets and Agents and Brokers	23,300	22,300	-4.3
TOTAL PRIVATE	3,604,900	3,497,300	-3.0	•Retail Trade	499,800	484,900	-3.0
GOODS PRODUCING	779,500	720,100	-7.6	Motor Vehicle and Parts Dealers	55,200	53,600	-2.9
SERVICE-PROVIDING	3,502,200	3,440,100	-1.8	Building Material and Garden Equip. and Supplies Dealers	41,700	40,300	-3.4
Natural Resources and Mining	7,500	7,200	-4.0	Food and Beverage Stores	82,100	80,300	-2.2
Construction	167,000	147,200	-11.9	Health and Personal Care	34,200	33,900	-0.9
Construction of Buildings	37,900	31,800	-16.1	Gasoline Stations	24,300	23,600	-2.9
Heavy and Civil Engineering	17,900	15,200	-15.1	Clothing and Clothing Accessories	45,600	43,300	-5.0
Specialty Trade Contractors	111,200	100,200	-9.9	Sporting Goods, Hobby, Book, and Music Stores	25,200	23,600	-6.3
Manufacturing	605,100	565,700	-6.5	General Merchandise Stores	115,900	114,600	-1.1
•Durable Goods	464,500	431,300	-7.1	Miscellaneous Store Retail	27,100	25,300	-6.6
Nonmetallic Mineral Products	13,500	12,700	-5.9	•Transportation & Warehousing & Utilities	131,000	127,600	-2.6
Primary Metal Manufacturing	24,400	23,300	-4.5	Air Transportation	14,600	14,500	-0.7
Fabricated Metal Product	79,100	75,800	-4.2	Rail Transportation	4,600	4,600	0.0
Machinery Manufacturing	69,000	66,000	-4.3	Truck Transportation	41,800	39,900	-4.5
Computer and Electronic Products	21,500	21,600	0.5	Warehousing and Storage	13,700	12,700	-7.3
Motor Vehicle Manufacturing	58,900	48,900	-17.0	Information	65,200	61,900	-5.1
Motor Vehicle Parts Manufacturing	126,600	105,300	-16.8	Publishing Industries	22,500	21,300	-5.3
Furniture and Related Products	25,300	24,900	-1.6	Telecommunications	23,400	22,800	-2.6
•Non-Durable Goods	140,600	134,400	-4.4	Financial Activities	208,700	202,200	-3.1
Food Manufacturing	34,200	34,900	2.0	Finance and Insurance	155,900	151,100	-3.1
Printing and Related Support Activities	17,200	16,800	-2.3	Real Estate	36,500	34,800	-4.7
Chemical Manufacturing	27,700	26,700	-3.6	Professional & Business Services	575,800	558,300	-3.0
Plastics and Rubber Products	38,600	35,500	-8.0	Legal Services	29,000	29,200	0.7
Trade Transportation & Utilities	799,300	776,700	-2.8	Accounting, Tax Preparation, Bookkeeping & Payroll Services	228,100	27,900	-0.7
•Wholesale Trade	168,500	164,300	-2.5	Architectural Engineering	65,500	61,700	-5.8
Merchant Wholesalers Durable Goods	96,800	94,800	-2.1				
Merchant Wholesalers Nondurable Goods	48,400	47,200	-2.5				

Note: Industry details and subtotals may not sum to totals due to rounding.

Source: Department of Labor and Economic Growth/Office of Labor Market Information, Current Employment Statistics Section - (800) 225-3732

Employment Trends by Selected Industries in Michigan
(data not seasonally adjusted, rounded to the nearest hundred)

Industry	Avg 2007 Qtr 4	Avg 2008 Qtr 4	% Change	Industry	Avg 2007 Qtr 4	Avg 2008 Qtr 4	% Change
Computer Systems Design	40,400	39,700	-1.7	Government	676,800	662,900	-2.1
Management, Scientific and Technical Consulting Services	19,600	19,200	-2.0	•Federal Government	53,500	53,600	0.2
Scientific Research and Development Services	21,300	20,800	-2.3	U.S. Postal Service	26,700	25,600	-4.1
Advertising and Related	15,200	14,800	-2.6	•State Government	177,300	179,200	1.1
Management of Companies	56,500	54,400	-3.7	State Government Educational Services	110,000	110,800	0.7
Administrative & Support Services	276,700	269,300	-2.7	State Government Hospital Services	16,100	16,700	3.7
Educational and Health Services	604,200	614,800	1.8	•Local Government	446,000	430,100	-3.6
•Educational Services (see also Government)	82,300	83,600	1.6	Local Government Educational Services	260,100	246,400	-5.3
•Health Care & Social Assistance	521,900	531,300	1.8	Local Government Hospitals	13,600	13,800	1.5
Ambulatory Health Care Services	177,300	180,100	1.6	Local Government Elementary and Secondary Schools	234,800	223,400	-4.9
Offices of Physicians	70,700	72,000	1.8	Local Government Junior Colleges	24,200	23,300	-3.7
Outpatient Care Centers	14,600	14,700	0.7				
Home Health Care Service	29,400	30,800	4.8				
Hospitals	188,700	191,700	1.6				
Nursing and Residential Care	93,500	95,400	2.0				
—Nursing Care Facilities	42,600	43,300	1.6				
Social Assistance	62,400	64,100	2.7				
—Individual and Family Services	26,500	27,000	1.9				
Leisure and Hospitality	395,600	391,600	-1.0				
Performing Arts Spectator Activities	9,800	9,500	-3.1				
Amusement, Gambling & Recreation	45,200	44,500	-1.5				
Accommodation	33,600	32,800	-2.4				
Food Services and Drinking	303,300	300,500	-0.9				
Other Services	176,500	171,600	-2.8				
Repair and Maintenance	38,500	37,100	-3.6				
Personal and Laundry Services	40,100	39,000	-2.7				
Religious Grantmaking Civic Professional	97,900	95,500	-2.5				

VISIT OUR WEBSITE FOR MORE INFORMATION!

The "Work and Wages" section of the Michigan League for Human Services website has information on Workforce Development, Work Supports, Unemployment, and Self-Sufficiency. It also includes back issues of the Economic Security Bulletin. Go to www.MiLHS.org and click the "Work and Wages" tab at the left.

Note: Industry details and subtotals may not sum to totals due to rounding.

Source: Department of Labor and Economic Growth/Office of Labor Market Information, Current Employment Statistics Section - (800) 225-3732



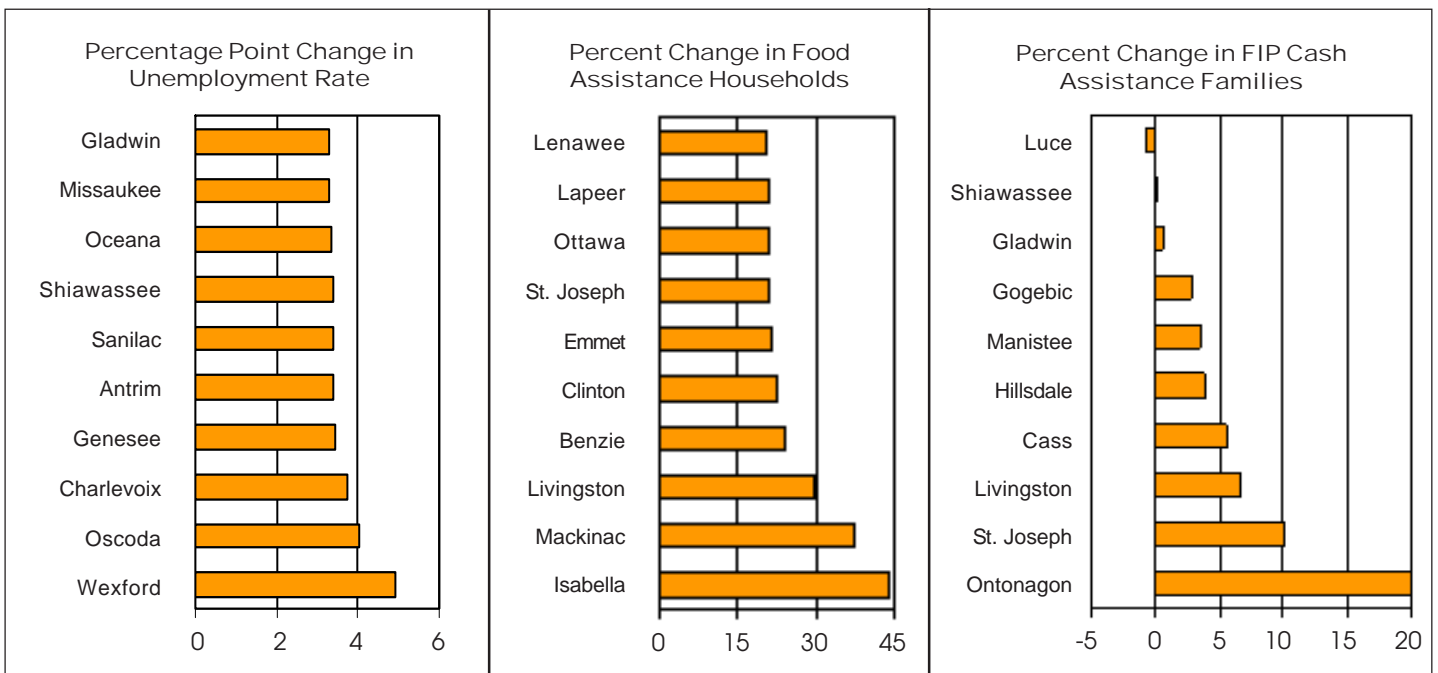
Michigan League for Human Services

1115 South Pennsylvania Avenue, Suite 202
 Lansing, MI 48912-1658
 (517) 487-5436 — Fax (517) 371-4546
 Web site: www.milhs.org

A United Way Agency

Nonprofit
 Organization
 U.S. Postage
Paid
 Lansing, MI
 Permit #1421

Percentage Change in Michigan Counties With Largest Increases
 Fourth Quarter 2007 — Fourth Quarter 2008



Sources: Unemployment: Bureau of Labor Statistics, Local Area Unemployment Statistics; Public Assistance: Michigan Department of Human Services