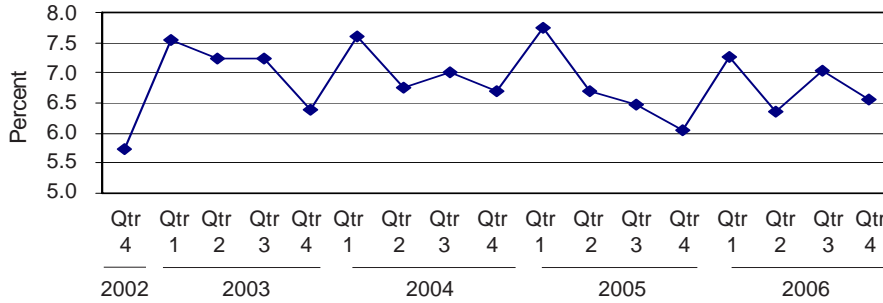




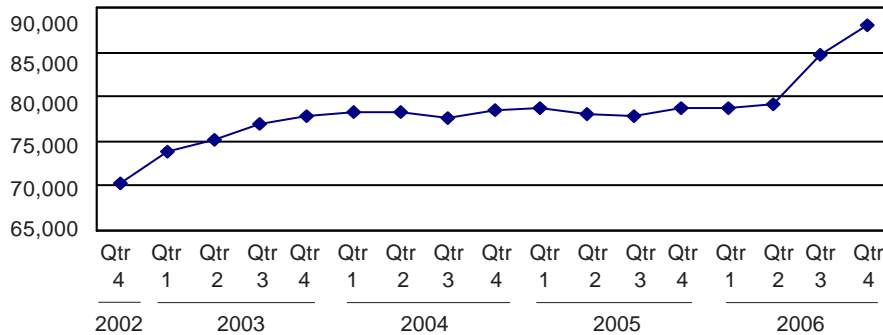
Michigan's Unemployment Rate  
Over the Past Four Years  
(not seasonally adjusted)



Source: Bureau of Labor Statistics



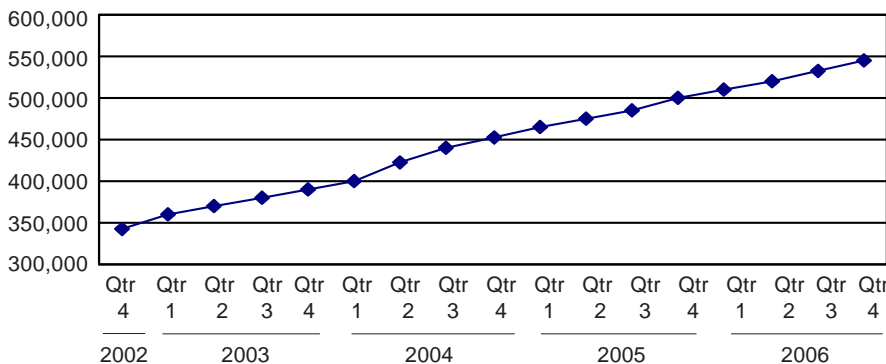
Family Independence Cases in Michigan  
Over the Past Four Years



Source: Michigan Department of Human Services



Food Assistance Households Over the Past Four Years



Source: Michigan Department of Human Services

## Cash and Food Assistance Caseloads Continue to Rise

### Unemployment


During the fourth quarter of 2006, Michigan had an unemployment rate of 6.6, a decrease from the previous quarter (7%) but higher than the fourth quarter of 2005 (6.2%). Forty-nine counties saw their unemployment rates increase by more than 10 percent over the fourth quarter of 2005. Six counties had an unemployment rate of over 10 percent, compared to two counties during the same quarter last year.

### Public Assistance

For the second quarter in a row, Family Independence Program caseloads have spiked sharply, from 79,204 in the second quarter of 2006 to 84,760 in the third quarter and 88,042 in the fourth quarter. This last number represents an increase of almost 10,000 cases over the 2005 fourth quarter caseload, with Wayne and Macomb counties comprising nearly 50 percent of the increase. Food Assistance caseloads continue to rise, reaching 546,240 during the fourth quarter--an increase of 9.3 percent over the same period last year.

### Sectoral Trends

Employment in motor vehicle and motor vehicle parts manufacturing continued to decrease during the fourth quarter of 2006, with a total decrease in those two industries of 23,800 jobs since the same quarter in 2005. However, truck transportation and administrative and support services both added a significant number of jobs since that time.

 Prepared by: Michigan League for Human Services	Unemployment (data not seasonally adjusted)						Food Assistance Program					
	Unemployment Rate			Number Unemployed			Total Number of Applications			Average Number of Households Receiving Food Assistance Per Month		
	Qtr 4 2005	Qtr 4 2006	% change	Qtr 4 2005	Qtr 4 2006	% change	Qtr 4 2005	Qtr 4 2006	% change	Qtr 4 2005	Qtr 4 2006	% change
<b>Michigan<sup>1</sup></b>	<b>6.2</b>	<b>6.6</b>	<b>6.5</b>	<b>313,475</b>	<b>334,924</b>	<b>6.8</b>	<b>134,694</b>	<b>149,511</b>	<b>11.0</b>	<b>499,910</b>	<b>546,240</b>	<b>9.3</b>
Alcona	9.4	9.9	5.7	394	421	6.9	119	151	26.9	495	561	13.3
Alger	6.8	7.2	6.4	293	314	7.2	62	115	85.5	295	333	12.6
Allegan	5.5	5.9	7.9	2,972	3,173	6.7	1,117	1,310	17.3	3,744	3,994	6.7
Alpena	6.1	7.0	15.3	932	1,068	14.6	484	520	7.4	2,041	2,192	7.4
Antrim	6.6	7.2	8.0	802	878	9.4	303	328	8.3	818	917	12.1
Arenac	8.0	9.5	19.2	636	735	15.6	220	245	11.4	1,081	1,177	8.8
Baraga	9.2	10.4	13.4	381	442	16.1	142	136	-4.2	428	440	2.9
Barry	4.2	4.9	15.7	1,328	1,536	15.7	670	672	0.3	2,113	2,310	9.3
Bay	5.8	6.2	8.1	3,262	3,507	7.5	1,404	1,353	-3.6	6,239	6,734	7.9
Benzie	6.6	7.8	18.2	604	723	19.6	218	249	14.2	553	682	23.3
Berrien	5.8	6.5	13.3	4,620	5,208	12.7	2,779	2,942	5.9	9,439	9,968	5.6
Branch	6.3	6.9	8.4	1,471	1,604	9.1	763	706	-7.5	2,011	2,241	11.4
Calhoun	5.6	6.3	12.4	4,106	4,620	12.5	2,561	2,670	4.3	9,392	10,214	8.7
Cass	4.4	5.0	15.3	1,246	1,413	13.4	612	739	20.8	2,546	2,664	4.7
Charlevoix	6.6	7.6	16.2	946	1,106	16.9	241	280	16.2	714	803	12.6
Cheboygan	8.3	9.6	15.2	1,091	1,264	15.8	394	483	22.6	1,395	1,519	8.9
Chippewa	7.0	7.7	9.5	1,250	1,387	10.9	516	524	1.6	1,593	1,751	9.9
Clare	8.1	9.7	19.8	1,101	1,321	20.0	544	539	-0.9	2,452	2,804	14.4
Clinton	4.6	4.7	1.4	1,761	1,785	1.4	489	490	0.2	1,547	1,773	14.6
Crawford	5.9	7.3	23.7	401	502	25.2	251	254	1.2	796	883	11.0
Delta	5.8	6.6	14.5	1,189	1,373	15.4	465	510	9.7	2,007	2,103	4.8
Dickinson	4.8	5.2	8.4	692	763	10.3	316	311	-1.6	1,008	1,103	9.5
Eaton	4.8	4.7	-1.4	2,879	2,830	-1.7	1,083	1,258	16.2	3,394	3,741	10.2
Emmet	7.2	8.2	14.9	1,436	1,659	15.5	432	481	11.3	1,190	1,366	14.7
Genesee	6.6	7.6	15.2	14,183	16,176	14.1	8,555	9,721	13.6	32,987	35,642	8.0
Gladwin	8.2	8.4	1.6	905	945	4.4	391	387	-1.0	1,597	1,757	10.0
Gogebic	6.3	6.3	0.5	495	499	0.8	224	226	0.9	1,010	1,103	9.2
Gr. Traverse	4.8	5.5	13.1	2,352	2,641	12.3	1,102	1,308	18.7	2,999	3,597	19.9
Gratiot	7.3	8.0	10.0	1,495	1,667	11.5	528	544	3.0	1,859	2,134	14.8
Hillsdale	6.4	7.3	13.5	1,444	1,652	14.4	585	590	0.9	1,961	2,171	10.7
Houghton	5.2	6.0	14.0	950	1,090	14.7	338	390	15.4	1,619	1,748	8.0
Huron	6.0	7.2	18.8	1,045	1,247	19.3	253	269	6.3	1,518	1,705	12.3
Ingham	5.5	5.6	2.4	8,602	8,738	1.6	4,440	4,630	4.3	15,418	16,642	7.9
Ionia	6.4	7.0	8.9	2,014	2,194	8.9	748	868	16.0	2,588	2,895	11.9
Iosco	7.8	8.6	11.2	820	929	13.3	370	463	25.1	1,775	1,985	11.8
Iron	5.8	6.1	4.0	344	365	6.1	144	163	13.2	606	595	-1.9
Isabella	3.9	4.4	12.7	1,526	1,718	12.6	792	1,207	52.4	2,745	3,465	26.2
Jackson	5.8	6.9	19.7	4,606	5,461	18.6	2,497	2,752	10.2	7,617	8,433	10.7
Kalamazoo	4.5	4.9	8.9	5,988	6,542	9.3	3,499	3,854	10.1	12,790	14,339	12.1
Kalkaska	6.2	7.1	14.6	548	630	14.9	314	355	13.1	941	1,069	13.6
Kent	4.9	5.4	10.2	15,989	17,668	10.5	7,920	9,140	15.4	28,124	30,326	7.8
Keweenaw	9.9	10.3	4.0	111	116	4.5	23	18	-21.7	87	87	-0.8
Lake	8.5	8.9	5.1	377	394	4.5	260	240	-7.7	1,131	1,133	0.2
Lapeer	6.8	7.1	4.4	3,073	3,226	5.0	706	920	30.3	2,300	2,664	15.8
Leelanau	4.6	4.6	-0.7	544	539	-0.9	117	141	20.5	342	358	4.9

<sup>1</sup>In some cases the Michigan number is slightly different from the county total.

Data sources: Unemployment: Bureau of Labor Statistics, Local Area Unemployment Statistics; Public Assistance: Michigan Department of Human Services.


Family Independence Program (Cash Assistance)

Total Number of Applications			Average Number of Families Receiving Cash Assistance Per Month			Application Approvals: Unemployment Benefits Exhausted, Layoff or Discharge, Depleted Savings, Non-Exempt Property or Loss of Other Resources			Total Number of Denials		Income Exceeds Standards as Percent of Denials		Percent of Cases Without Earned Income, Out of Total Cases Expected to Work	
Qtr 4 2005	Qtr 4 2006	% change	Qtr 4 2005	Qtr 4 2006	% change	Qtr 4 2005	Qtr 4 2006	% change	Qtr 4 2005	Qtr 4 2006	Qtr 4 2005	Qtr 4 2006	Qtr 4 2005	Qtr 4 2006
<b>44,252</b>	<b>45,711</b>	<b>3.3</b>	<b>78,740</b>	<b>88,042</b>	<b>11.8</b>	<b>2,228</b>	<b>3,033</b>	<b>36.1</b>	<b>20,658</b>	<b>17,344</b>	<b>45.4</b>	<b>58.8</b>	<b>66%</b>	<b>70%</b>
39	38	-2.6	40	47	19.3	0	0	0	21	25	61.9	72.0	61%	77%
27	34	25.9	21	28	37.1	1	1	0.0	15	9	66.7	77.8	33%	95%
439	433	-1.4	380	442	16.5	39	31	-20.5	208	181	52.9	59.1	61%	58%
129	148	14.7	175	208	18.6	27	34	25.9	50	56	54.0	67.9	33%	48%
96	104	8.3	66	71	6.5	4	0	-100.0	47	47	63.8	68.1	43%	78%
75	83	10.7	95	115	20.6	10	22	120.0	32	39	46.9	53.8	43%	58%
43	42	-2.3	55	46	-17.0	0	3	0	12	6	41.7	50.0	39%	53%
250	235	-6.0	246	269	9.4	20	24	20.0	101	90	59.4	65.6	46%	58%
519	489	-5.8	776	861	10.9	35	54	54.3	188	165	51.6	65.5	50%	55%
60	82	36.7	40	51	27.5	5	3	-40.0	57	54	52.6	61.1	46%	61%
1,028	1,045	1.7	1,282	1,498	16.9	8	26	225.0	488	380	41.0	58.4	55%	64%
323	294	-9.0	232	327	40.6	38	59	55.3	160	115	55.6	58.3	63%	70%
960	973	1.4	1,536	1,700	10.7	67	90	34.3	397	339	57.4	57.8	67%	70%
217	258	18.9	297	314	5.7	19	31	63.2	99	92	59.6	65.2	67%	62%
67	82	22.4	55	63	13.9	2	6	200.0	41	38	48.8	81.6	0%	*
132	186	40.9	109	141	29.4	7	27	285.7	75	61	49.3	70.5	84%	76%
140	163	16.4	156	182	16.9	11	28	154.5	58	62	55.2	61.3	70%	66%
213	206	-3.3	288	341	18.5	10	18	80.0	91	83	44.0	57.8	61%	72%
169	167	-1.2	115	144	25.2	6	6	0.0	116	103	57.8	67.0	64%	63%
92	91	-1.1	87	98	11.8	5	17	240.0	44	46	50.0	71.7	49%	67%
139	138	-0.7	138	148	7.2	5	0	-100.0	55	54	47.3	57.4	67%	71%
73	104	42.5	72	71	-0.9	8	16	100.0	40	49	62.5	63.3	48%	63%
372	425	14.2	362	429	18.5	3	4	33.3	200	185	56.5	59.5	63%	73%
102	118	15.7	62	71	15.1	2	15	650.0	63	47	57.1	68.1	41%	74%
3,418	3,084	-9.8	6,635	7,394	11.4	182	232	27.5	1,560	1,085	39.2	56.7	61%	69%
176	142	-19.3	144	209	44.6	8	12	50.0	81	48	48.1	56.3	61%	59%
49	65	32.7	155	171	10.8	6	7	16.7	18	24	77.8	75.0	76%	67%
283	342	20.8	157	197	25.5	10	20	100.0	169	182	65.7	74.7	82%	76%
217	214	-1.4	272	323	18.7	12	14	16.7	115	99	57.4	69.7	60%	63%
227	206	-9.3	186	229	22.9	23	24	4.3	116	74	52.6	68.9	72%	66%
76	77	1.3	99	102	2.7	9	6	-33.3	24	30	66.7	66.7	54%	82%
71	71	0.0	108	143	31.7	11	26	136.4	22	24	72.7	95.8	68%	74%
1,422	1,394	-2.0	1,810	2,029	12.1	50	63	26.0	753	536	42.4	58.0	62%	67%
267	278	4.1	226	302	33.6	10	5	-50.0	140	122	46.4	63.1	63%	75%
102	157	53.9	135	172	27.4	3	8	166.7	52	73	65.4	68.5	35%	64%
51	52	2.0	73	70	-3.7	8	8	0.0	11	21	54.5	47.6	59%	63%
265	266	0.4	305	357	17.1	6	2	-66.7	124	109	49.2	61.5	63%	58%
790	832	5.3	1,066	1,143	7.3	39	56	43.6	426	334	37.8	55.7	67%	72%
1,188	1,186	-0.2	1,761	2,051	16.5	66	32	-51.5	507	386	37.7	58.0	62%	70%
103	122	18.4	75	94	25.4	25	29	16.0	39	50	51.3	46.0	57%	66%
2,711	2,774	2.3	4,289	4,678	9.1	153	147	-3.9	1,313	1,138	48.6	63.2	49%	58%
3	3	0.0	4	3	-30.8	0	0	0	2	0	*	*	0%	*
99	74	-25.3	141	132	-6.1	9	14	55.6	29	15	44.8	66.7	76%	70%
258	332	28.7	240	277	15.6	5	13	160.0	156	163	52.6	67.5	67%	75%
29	31	6.9	27	23	-13.6	0	3	0	21	15	66.7	86.7	*	*

<sup>1</sup>In some cases the Michigan number is slightly different from the county total.

\*Data is unavailable or cannot be calculated.

Data sources: Unemployment: Bureau of Labor Statistics, Local Area Unemployment Statistics; Public Assistance: Michigan Department of Human Services.

 Prepared by: Michigan League for Human Services	Unemployment (data not seasonally adjusted)						Food Assistance Program					
	Unemployment Rate			Number Unemployed			Total Number of Applications			Average Number of Households Receiving Food Assistance Per Month		
	Qtr 4 2005	Qtr 4 2006	% change	Qtr 4 2005	Qtr 4 2006	% change	Qtr 4 2005	Qtr 4 2006	% change	Qtr 4 2005	Qtr 4 2006	% change
Lenawee	6.0	6.8	12.8	2,993	3,495	16.8	1,120	1,266	13.0	3,427	3,885	13.4
Livingston	4.8	4.8	-0.7	4,524	4,470	-1.2	831	1,052	26.6	2,265	2,672	18.0
Luce	6.7	7.4	11.5	189	209	10.8	86	109	26.7	362	403	11.5
Mackinac	10.9	11.5	5.8	608	657	8.1	135	152	12.6	348	366	5.0
Macomb	6.2	6.9	10.2	26,230	29,171	11.2	6,957	8,201	17.9	24,875	28,535	14.7
Manistee	6.9	8.2	18.8	830	984	18.6	318	407	28.0	1,364	1,474	8.0
Marquette	4.7	5.5	17.0	1,716	2,019	17.6	592	730	23.3	2,693	2,919	8.4
Mason	6.6	7.3	9.5	1,011	1,103	9.1	406	399	-1.7	1,613	1,680	4.2
Mecosta	6.0	6.6	11.2	1,220	1,364	11.8	659	782	18.7	2,784	3,284	18.0
Menominee	4.1	5.4	31.7	558	742	32.9	276	245	-11.2	1,075	1,116	3.8
Midland	5.0	5.2	2.6	2,092	2,171	3.8	868	929	7.0	3,402	3,623	6.5
Missaukee	6.0	7.1	17.8	410	486	18.6	174	185	6.3	665	696	4.7
Monroe	5.1	6.1	19.7	3,955	4,769	20.6	1,328	1,455	9.6	4,672	5,170	10.7
Montcalm	8.4	11.5	37.3	2,439	3,257	33.5	846	808	-4.5	3,054	3,488	14.2
Montmorency	10.2	11.5	12.7	429	488	13.7	144	134	-6.9	644	710	10.2
Muskegon	5.9	6.5	9.6	5,459	5,925	8.5	3,423	3,641	6.4	13,596	14,569	7.2
Newaygo	6.1	6.8	12.1	1,445	1,623	12.3	691	696	0.7	2,545	2,741	7.7
Oakland	5.3	5.3	1.3	34,015	34,175	0.5	9,474	10,203	7.7	26,902	30,816	14.5
Oceana	7.0	7.4	5.7	1,001	1,048	4.8	443	485	9.5	1,774	1,876	5.8
Ogemaw	6.5	7.2	11.9	650	731	12.5	301	304	1.0	1,816	1,918	5.6
Ontonagon	6.5	7.3	11.2	236	263	11.5	90	78	-13.3	371	394	6.2
Osceola	6.1	6.9	14.3	626	718	14.7	245	342	39.6	1,413	1,441	2.0
Oscoda	9.1	9.9	8.4	356	398	11.6	115	132	14.8	627	686	9.3
Otsego	6.2	7.8	25.9	803	1,015	26.3	337	349	3.6	1,158	1,339	15.7
Ottawa	4.3	5.0	14.6	5,971	6,859	14.9	1,706	1,889	10.7	5,298	5,710	7.8
Presque Isle	8.9	10.5	18.4	559	654	16.9	123	169	37.4	539	597	10.6
Roscommon	6.9	7.9	14.5	795	928	16.6	415	400	-3.6	1,847	1,996	8.0
Saginaw	6.5	6.7	2.6	6,498	6,559	0.9	3,721	3,829	2.9	15,019	15,754	4.9
Saint Clair	7.1	7.5	6.6	6,000	6,412	6.9	2,159	2,449	13.4	7,579	8,678	14.5
Saint Joseph	5.6	6.2	12.0	1,741	1,979	13.7	965	1,042	8.0	3,143	3,294	4.8
Sanilac	6.5	7.6	18.0	1,419	1,717	20.9	498	589	18.3	2,312	2,589	12.0
Schoolcraft	9.1	9.5	4.4	370	386	4.4	126	98	-22.2	490	538	9.8
Shiawassee	6.6	7.2	9.1	2,457	2,725	10.9	902	1,037	15.0	3,273	3,671	12.2
Tuscola	6.6	7.4	12.6	1,944	2,239	15.2	587	656	11.8	2,314	2,621	13.3
Van Buren	5.9	6.2	6.2	2,402	2,557	6.5	1,431	1,599	11.7	4,629	4,811	3.9
Washtenaw	3.6	4.2	16.5	7,084	8,169	15.3	2,789	3,636	30.4	9,289	11,095	19.4
Wayne	8.1	8.2	1.2	73,392	73,569	0.2	38,892	43,017	10.6	159,333	170,566	7.1
Wexford	6.2	7.7	24.2	916	1,152	25.8	530	565	6.6	2,095	2,396	14.4

## FACT

The deadline for filing state and federal income taxes this year is Tuesday, April 17.

<sup>1</sup>In some cases the Michigan number is slightly different from the county total.

Data sources: Unemployment: Bureau of Labor Statistics, Local Area Unemployment Statistics; Public Assistance: Michigan Department of Human Services.

Family Independence Program (Cash Assistance)

Total Number of Applications			Average Number of Families Receiving Cash Assistance Per Month			Application Approvals: Unemployment Benefits Exhausted, Layoff or Discharge, Depleted Savings, Non-Exempt Property or Loss of Other Resources			Total Number of Denials		Income Exceeds Standards as Percent of Denials		Percent of Cases Without Earned Income, Out of Total Cases Expected to Work	
Qtr 4 2005	Qtr 4 2006	% change	Qtr 4 2005	Qtr 4 2006	% change	Qtr 4 2005	Qtr 4 2006	% change	Qtr 4 2005	Qtr 4 2006	Qtr 4 2005	Qtr 4 2006	Qtr 4 2005	Qtr 4 2006
381	428	12.3	368	449	22.0	6	6	0.0	184	195	44.6	62.1	50%	61%
318	334	5.0	147	202	37.3	14	14	0.0	222	212	54.1	70.3	49%	70%
27	35	29.6	23	35	50.0	1	0	-100.0	14	14	42.9	50.0	62%	59%
41	60	46.3	28	34	18.8	3	4	33.3	25	26	56.0	73.1	0%	69%
2,070	2,321	12.1	2,545	3,415	34.2	94	206	119.1	1,090	916	45.4	63.9	63%	70%
109	148	35.8	126	150	19.0	15	27	80.0	46	56	56.5	55.4	61%	65%
156	183	17.3	252	270	7.2	9	6	-33.3	52	76	42.3	60.5	59%	68%
167	167	0.0	214	194	-9.2	22	24	9.1	69	56	56.5	71.4	66%	54%
189	180	-4.8	239	252	5.3	7	17	142.9	65	56	60.0	55.4	66%	67%
81	69	-14.8	73	85	17.4	14	4	-71.4	29	22	41.4	59.1	50%	54%
297	292	-1.7	345	381	10.4	26	36	38.5	153	127	53.6	70.1	55%	59%
51	51	0.0	69	65	-6.3	6	8	33.3	32	18	56.3	77.8	*	*
513	500	-2.5	648	699	8.0	15	50	233.3	224	175	46.9	65.7	69%	64%
306	301	-1.6	305	389	27.5	28	54	92.9	172	94	57.6	63.8	74%	71%
41	45	9.8	50	57	13.9	3	10	233.3	21	26	61.9	80.8	52%	75%
1,268	1,398	10.3	2,640	2,844	7.7	86	90	4.7	523	369	54.1	50.9	71%	67%
231	244	5.6	275	276	0.6	2	0	-100.0	83	82	37.3	54.9	77%	74%
2,524	3,045	20.6	3,329	3,753	12.7	62	182	193.5	1,487	1,551	48.9	58.3	68%	72%
229	205	-10.5	310	298	-3.9	40	42	5.0	78	67	60.3	62.7	60%	59%
122	112	-8.2	177	190	7.5	36	40	11.1	40	27	60.0	59.3	46%	58%
31	18	-41.9	37	38	2.7	2	8	300.0	8	7	100.0	71.4	53%	40%
101	126	24.8	156	162	3.6	9	10	11.1	39	43	46.2	69.8	*	*
44	36	-18.2	56	64	14.3	7	1	-85.7	12	8	75.0	75.0	44%	65%
113	126	11.5	86	101	17.4	6	4	-33.3	55	54	63.6	83.3	47%	46%
491	509	3.7	468	512	9.5	12	18	50.0	210	211	50.0	59.7	51%	70%
30	60	100.0	42	44	4.8	1	3	200.0	14	25	50.0	56.0	42%	92%
126	123	-2.4	161	185	14.7	10	11	10.0	49	38	51.0	71.1	38%	72%
1,346	1,266	-5.9	2,992	3,017	0.8	112	130	16.1	598	458	41.6	54.8	47%	53%
769	803	4.4	960	1,184	23.4	74	79	6.8	309	287	45.0	61.0	57%	69%
347	430	23.9	323	417	28.9	32	44	37.5	185	165	41.1	55.2	64%	65%
143	216	51.0	209	240	14.7	35	42	20.0	55	58	49.1	58.6	58%	62%
41	39	-4.9	44	56	27.1	0	5	0	14	9	28.6	44.4	71%	79%
367	361	-1.6	316	396	25.3	7	41	485.7	201	137	50.7	73.0	54%	63%
217	249	14.7	249	283	13.7	18	29	61.1	95	83	46.3	60.2	68%	63%
558	482	-13.6	597	559	-6.4	56	43	-23.2	213	196	54.5	58.2	68%	69%
757	952	25.8	1,281	1,467	14.5	9	36	300.0	362	348	37.3	57.2	63%	66%
11,942	11,944	0.0	33,763	37,235	10.3	365	450	23.3	5,196	4,103	38.6	52.1	70%	73%
199	213	7.0	243	279	14.7	17	23	35.3	98	95	62.2	55.8	68%	73%

FACT

Building vocational skills has been shown to lift families out of poverty. Michigan needs to increase such opportunities for families who receive public assistance.

<sup>1</sup>In some cases the Michigan number is slightly different from the county total.

\*Data is unavailable or cannot be calculated.

Data sources: Unemployment: Bureau of Labor Statistics, Local Area Unemployment Statistics; Public Assistance: Michigan Department of Human Services.

Employment Trends by Selected Industries in Michigan  
(data not seasonally adjusted, rounded to the nearest hundred)

Industry	Avg 2005 Qtr 4	Avg 2006 Qtr 4	% Change	Industry	Avg 2005 Qtr 4	Avg 2006 Qtr 4	% Change
<b>TOTAL NONFARM</b>	<b>4,438,000</b>	<b>4,415,300</b>	<b>-0.5</b>	<b>Trade Transportation &amp; Utilities</b>	<b>816,200</b>	<b>803,400</b>	<b>-1.6</b>
<b>TOTAL PRIVATE</b>	<b>3,739,400</b>	<b>3,716,800</b>	<b>-0.6</b>	•Wholesale Trade	<b>170,400</b>	<b>170,600</b>	<b>0.1</b>
<b>GOODS PRODUCING</b>	<b>887,600</b>	<b>847,200</b>	<b>-4.6</b>	Merchant Wholesalers			
<b>SERVICE-PROVIDING</b>	<b>3,550,400</b>	<b>3,568,200</b>	<b>0.5</b>	Durable Goods	96,200	96,800	0.6
<b>Natural Resources and Mining</b>	<b>8,400</b>	<b>8,500</b>	<b>1.2</b>	Merchant Wholesalers			
Mining	6,700	6,600	-1.5	Nondurable Goods	50,100	49,900	-0.4
Mining except oil and gas	4,400	4,800	9.1	Wholesale Electronic Markets			
<b>Construction</b>	<b>197,900</b>	<b>195,900</b>	<b>-1.0</b>	and Agents and Brokers	24,100	23,900	-0.8
Construction of Buildings	47,800	47,200	-1.3	•Retail Trade	<b>516,100</b>	<b>502,500</b>	<b>-2.6</b>
Heavy and Civil Engineering	19,400	19,700	1.5	Motor Vehicle and Parts Dealers	60,600	59,000	-2.6
Specialty Trade Contractors	130,700	129,100	-1.2	Furniture and Home Furnishings	18,700	18,000	-3.7
<b>Manufacturing</b>	<b>681,300</b>	<b>642,800</b>	<b>-5.7</b>	Electronics and Appliance	19,200	18,800	-2.1
•Durable Goods	<b>530,700</b>	<b>492,400</b>	<b>-7.2</b>	Building Material and Garden			
Nonmetallic Mineral Products	16,700	16,000	-4.2	Equip. and Supplies Dealers	45,800	45,800	0.0
Primary Metal Manufacturing	27,000	26,100	-3.3	Food and Beverage Stores	85,300	84,000	-1.5
Fabricated Metal Product	85,300	84,800	-0.6	Health and Personal Care	33,900	34,200	0.9
Machinery Manufacturing	75,200	74,300	-1.2	Gasoline Stations	24,900	25,000	0.4
Computer and Electronic Products	20,400	20,900	2.5	Clothing and Clothing Accessories	45,200	45,400	0.4
Electrical Equipment and				Sporting Goods, Hobby, Book,			
Appliances	12,600	10,600	-15.9	and Music Stores	25,800	25,300	-1.9
Motor Vehicle Manufacturing	65,300	55,500	-15.0	General Merchandise Stores	117,300	113,300	-3.4
Motor Vehicle Parts				Miscellaneous Store Retail	29,600	28,500	-3.7
Manufacturing	161,100	147,100	-8.7	•Transportation & Warehousing	<b>129,700</b>	<b>130,300</b>	<b>0.5</b>
Furniture and Related Products	25,100	25,100	0.0	Rail Transportation	5,000	4,900	-2.0
Miscellaneous Manufacturing	17,500	17,500	0.0	Truck Transportation	38,700	40,800	5.4
•Non-Durable Goods	<b>150,600</b>	<b>150,400</b>	<b>-0.1</b>	Couriers and Messengers	14,000	11,800	-15.7
Food Manufacturing	34,800	34,400	-1.1	Warehousing and Storage	16,100	16,200	0.6
Paper Manufacturing	14,900	14,800	-0.7	<b>Information</b>	<b>66,900</b>	<b>66,800</b>	<b>-0.1</b>
Printing and Related Support				Publishing Industries	24,400	23,800	-2.5
Activities	17,600	17,100	-2.8	Telecommunications	22,000	21,700	-1.4
Chemical Manufacturing	30,000	29,500	-1.7	<b>Financial Activities</b>	<b>218,300</b>	<b>219,300</b>	<b>0.5</b>
Plastics and Rubber Products	42,600	41,900	-1.6	Finance and Insurance	162,900	164,000	0.7
				Real Estate	37,800	37,700	-0.3

Note: Industry details and subtotals may not sum to totals due to rounding.

Source: Department of Labor and Economic Growth/Office of Labor Market Information, Current Employment Statistics Section - (800) 225-3732



Employment Trends by Selected Industries in Michigan  
(data not seasonally adjusted, rounded to the nearest hundred)

Industry	Avg 2005 Qtr 4	Avg 2006 Qtr 4	% Change	Industry	Avg 2005 Qtr 4	Avg 2006 Qtr 4	% Change
<b>Professional &amp; Business Services</b>	<b>597,600</b>	<b>614,200</b>	<b>2.8</b>	Food Services and Drinking	306,600	309,400	0.9
Legal Services	30,000	29,700	-1.0	<b>Other Services</b>	<b>178,900</b>	<b>178,700</b>	<b>-0.1</b>
Accounting and Tax Preparation	27,000	29,200	8.1	Repair and Maintenance	41,200	40,200	-2.4
Architectural Engineering	70,900	70,700	-0.3	Personal and Laundry Services	41,700	41,400	-0.7
Computer Systems Design	38,800	39,800	2.6	Religious Grantmaking Civic Professional	96,000	97,100	1.1
Management, Scientific and Technical Consulting Services	19,700	20,000	1.5	<b>Government</b>	<b>698,600</b>	<b>698,500</b>	<b>0.0</b>
Scientific Research and Development Services	24,000	24,700	2.9	• <b>Federal Government</b>	<b>54,800</b>	<b>54,400</b>	<b>-0.7</b>
Advertising and Related	16,000	15,800	-1.3	Federal Government Hospital Services	5,700	5,800	1.8
Other Professional Scientific and Technical Services	16,000	16,100	0.6	U.S. Postal Service	27,900	27,900	0.0
Management of Companies	63,900	63,000	-1.4	• <b>State Government</b>	<b>176,700</b>	<b>175,200</b>	<b>-0.8</b>
Administrative & Support Services	286,200	298,600	4.3	State Government Educational Services	105,600	105,300	-0.3
<b>Educational and Health Services</b>	<b>574,400</b>	<b>583,600</b>	<b>1.6</b>	State Government Hospital Services	14,600	15,400	5.5
• <b>Educational Services</b>	<b>78,600</b>	<b>81,100</b>	<b>3.2</b>	• <b>Local Government</b>	<b>467,100</b>	<b>468,900</b>	<b>0.4</b>
(see also <b>Government</b> )				Local Government Educational Services	21 280,700	278,100	-0.9
• <b>Health Care &amp; Social Assistance</b>	<b>495,800</b>	<b>502,500</b>	<b>1.4</b>	Local Government Hospitals	13,800	13,800	0.0
Ambulatory Health Care Services	165,900	168,600	1.6	Local Government Elementary and Secondary Schools	256,400	257,100	0.3
Offices of Physicians	67,200	68,200	1.5	Local Government Junior Colleges	22,500	22,500	0.0
Offices of Dentists	31,600	31,800	0.6				
Offices of Other Health Professionals	19,200	19,500	1.6				
Outpatient Care Centers	13,600	13,600	0.0				
Home Health Care Service	24,800	25,200	1.6				
Hospitals	182,700	184,500	1.0				
Nursing and Residential Care	89,800	90,200	0.4				
—Nursing Care Facilities	41,700	41,400	-0.7				
—Community Care Facilities	23,200	23,100	-0.4				
Social Assistance	57,400	59,300	3.3				
—Individual and Family Services	25,000	25,400	1.6				
<b>Leisure and Hospitality</b>	<b>399,500</b>	<b>403,600</b>	<b>1.0</b>				
Performing Arts Spectator Activities	9,000	9,000	0.0				
Amusement, Gambling & Recreation	46,500	47,000	1.1				
Accommodation	33,300	33,400	0.3				

**VISIT OUR WEBSITE FOR MORE INFORMATION!**

The "Work and Wages" section of the Michigan League for Human Services website has information on Workforce Development, Work Supports, Unemployment, and Self-Sufficiency. It also includes back issues of the Economic Security Bulletin. Go to <http://www.MiLHS.org> and click the "Work and Wages" tab at the right.

Note: Industry details and subtotals may not sum to totals due to rounding.

Source: Department of Labor and Economic Growth/Office of Labor Market Information, Current Employment Statistics Section - (800) 225-3732



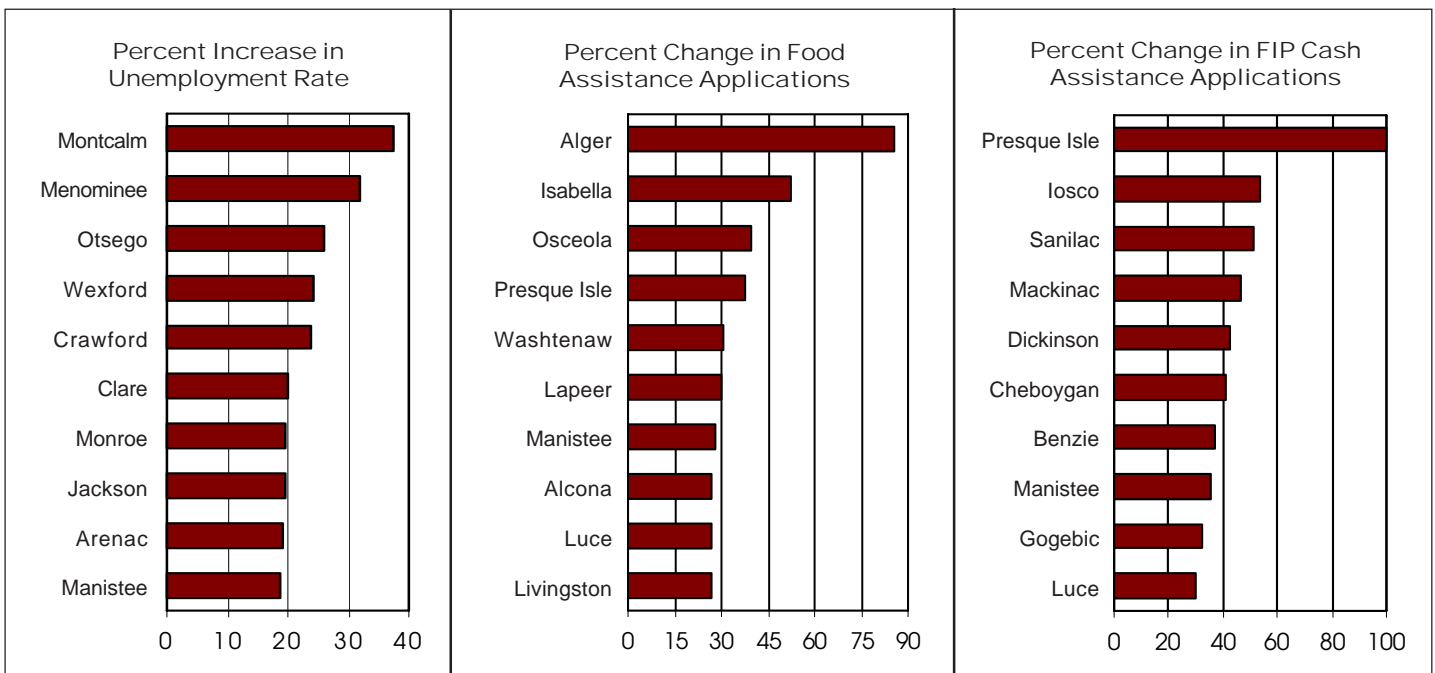
**Michigan League for Human Services**

1115 South Pennsylvania Avenue, Suite 202  
 Lansing, MI 48912-1658  
 (517) 487-5436 — Fax (517) 371-4546  
 Web site: www.milhs.org

*A United Way Agency*

Nonprofit  
 Organization  
 U.S. Postage  
**Paid**  
 Lansing, MI  
 Permit #1421

Percentage Change in Michigan Counties With Largest Increases  
 Third Quarter 2005 — Third Quarter 2006



Sources: Unemployment: Bureau of Labor Statistics, Local Area Unemployment Statistics; Public Assistance: Michigan Department of Human Services