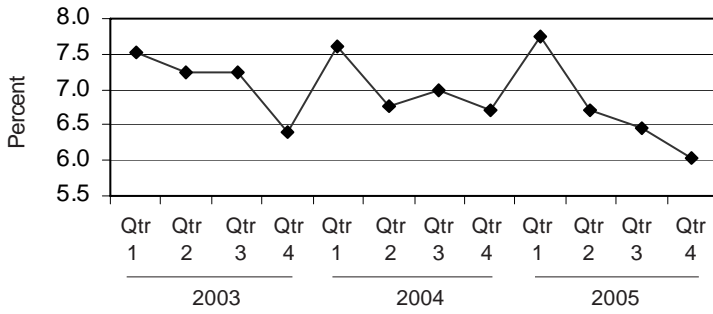


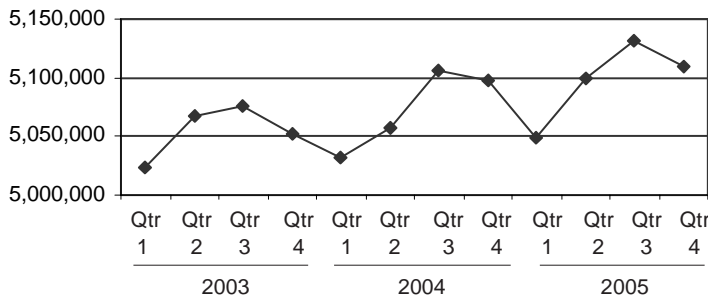


Michigan's Unemployment Rate Over the Past Three Years (not seasonally adjusted)



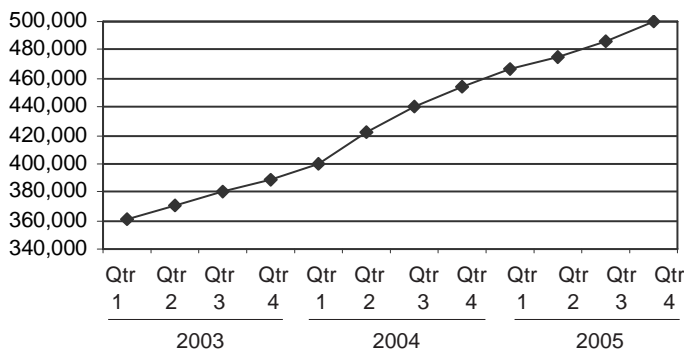
Source: Bureau of Labor Statistics

Michigan Labor Force Over the Past Three Years



Note: The 2003 figures are benchmarked from the annual data, resulting in a slight difference from previous figures for those months.  
Source: Bureau of Labor Statistics

Food Assistance Households Over the Past Three Years



Source: Michigan Family Independence Agency

## Unemployment Drops Slightly, FIP Cases Remain Stable and Food Assistance Cases Continue to Rise

### Unemployment


The state's unemployment rate was 6 percent during the fourth quarter of 2005, down from 6.7 percent a year previously and down from 6.5 percent the previous quarter. All counties except one saw a decrease in their unemployment rate, and most had decreases of 10 percent or more. Of the large counties experiencing a significant decrease, Kent, Berrien, Saginaw and Kalamazoo counties led the way with unemployment drops of 17 to 20 percent. Also worth noting is that Michigan's fourth quarter labor force is higher than at the same time during the previous two years.

### Public Assistance

The Family Independence Program cash assistance caseload remains in the high 70,000's, where it has been for the past 2 1/2 years. The Food Assistance caseload continues to rise, as it has for 5 1/2 years; during the fourth quarter 2005 it stood at slightly under 500,000. While Wayne County accounted for more than one-fourth of the caseloads added over the past year, the counties that experienced the largest percentage increases were Antrim, Leelanau, Mecosta and Livingston. The sharpest increases in applications for cash and food assistance continue to come from primarily rural counties.

### Sectoral Trends

The number of total nonfarm jobs saw a small net decrease of 17,100 between the fourth quarter of 2004 and that of 2005. Manufacturing lost 17,800 jobs, with the sharpest drop occurring in the manufacture of electrical equipment and appliances. Motor vehicle manufacturing lost 5,100 jobs since the fourth quarter of 2004.

 Prepared by: Michigan League for Human Services	Unemployment (data not seasonally adjusted)						Food Assistance Program					
	Unemployment Rate			Number Unemployed			Total Number of Applications			Average Number of Households Receiving Food Assistance Per Month		
	Qtr 4 2004	Qtr 4 2005	% change	Qtr 4 2004	Qtr 4 2005	% change	Qtr 4 2004	Qtr 4 2005	% change	Qtr 4 2004	Qtr 4 2005	% change
<b>Michigan<sup>1</sup></b>	<b>6.7</b>	<b>6.0</b>	<b>-10.0</b>	<b>341,927</b>	<b>308,550</b>	<b>-9.8</b>	<b>129,380</b>	<b>134,694</b>	<b>4.1</b>	<b>453,725</b>	<b>499,910</b>	<b>10.2</b>
Alcona	10.8	9.3	-13.8	454	395	-13.0	101	119	17.8	471	495	5.2
Alger	7.4	6.6	-10.0	322	293	-9.0	66	62	-6.1	272	295	8.4
Allegan	6.3	5.6	-12.1	3,390	2,994	-11.7	1,066	1,117	4.8	3,259	3,744	14.9
Alpena	7.7	5.9	-22.6	1,193	939	-21.3	446	484	8.5	1,888	2,041	8.1
Antrim	7.9	6.6	-16.5	945	806	-14.7	282	303	7.4	649	818	26.1
Arenac	9.4	8.1	-13.5	746	641	-14.1	204	220	7.8	999	1,081	8.2
Baraga	11.8	9.3	-21.2	477	381	-20.1	113	142	25.7	367	428	16.7
Barry	5.6	4.3	-22.2	1,696	1,338	-21.1	549	670	22.0	1,876	2,113	12.6
Bay	7.0	5.8	-16.7	3,968	3,285	-17.2	1,315	1,404	6.8	5,705	6,239	9.4
Benzie	7.5	6.6	-12.4	680	610	-10.3	209	218	4.3	495	553	11.8
Berrien	7.2	5.9	-18.4	5,722	4,628	-19.1	2,700	2,779	2.9	8,771	9,439	7.6
Branch	6.5	6.2	-5.6	1,525	1,476	-3.2	654	763	16.7	1,745	2,011	15.2
Calhoun	6.5	5.6	-13.4	4,777	4,137	-13.4	2,322	2,561	10.3	8,599	9,392	9.2
Cass	4.5	4.3	-3.0	1,227	1,226	-0.1	656	612	-6.7	2,344	2,546	8.6
Charlevoix**	7.5	6.7	-11.1	1,058	952	-10.1	**	241	*	**	714	*
Cheboygan	9.6	8.5	-11.1	1,208	1,096	-9.3	429	394	-8.2	1,260	1,395	10.7
Chippewa	8.4	7.0	-16.7	1,485	1,259	-15.2	433	516	19.2	1,523	1,593	4.6
Clare	9.3	8.0	-14.3	1,280	1,106	-13.6	481	544	13.1	2,284	2,452	7.4
Clinton	5.8	4.7	-20.0	2,182	1,777	-18.5	390	489	25.4	1,367	1,547	13.2
Crawford	7.0	5.8	-16.7	478	404	-15.5	209	251	20.1	741	796	7.3
Delta	7.2	5.7	-20.0	1,478	1,189	-19.5	452	465	2.9	1,831	2,007	9.7
Dickinson	5.9	4.7	-20.2	857	691	-19.3	260	316	21.5	930	1,008	8.4
Eaton	5.7	4.8	-15.8	3,384	2,899	-14.3	1,028	1,083	5.4	3,036	3,394	11.8
Emmet**	8.5	7.3	-13.4	1,662	1,448	-12.9	408	432	5.9	1,099	1,190	8.3
Genesee	7.6	6.6	-13.2	16,420	14,288	-13.0	8,129	8,555	5.2	29,811	32,987	10.7
Gladwin	9.5	8.1	-15.4	1,069	910	-14.9	333	391	17.4	1,416	1,597	12.8
Gogebic	7.0	6.2	-11.5	552	492	-10.8	211	224	6.2	952	1,010	6.1
Gr. Traverse**	6.1	4.8	-21.3	2,953	2,366	-19.9	984	1,102	12.0	2,690	2,999	11.5
Gratiot	8.6	7.2	-16.0	1,741	1,509	-13.3	456	528	15.8	1,703	1,859	9.2
Hillsdale	7.8	6.4	-18.0	1,773	1,451	-18.2	487	585	20.1	1,698	1,961	15.5
Houghton	5.8	5.2	-9.8	1,028	956	-7.1	280	338	20.7	1,531	1,619	5.7
Huron	7.3	6.0	-18.6	1,269	1,052	-17.1	189	253	33.9	1,442	1,518	5.3
Ingham	6.4	5.4	-15.1	10,035	8,663	-13.7	4,350	4,440	2.1	13,624	15,418	13.2
Ionia	8.2	6.6	-19.8	2,528	2,033	-19.6	700	748	6.9	2,437	2,588	6.2
Iosco	8.7	7.7	-11.5	927	825	-11.0	407	370	-9.1	1,685	1,775	5.3
Iron	7.0	5.7	-18.6	415	343	-17.5	141	144	2.1	558	606	8.7
Isabella	4.6	4.0	-13.1	1,699	1,536	-9.6	631	792	25.5	2,340	2,745	17.3
Jackson	6.8	5.7	-16.1	5,452	4,639	-14.9	2,235	2,497	11.7	6,858	7,617	11.1
Kalamazoo	5.4	4.5	-17.8	7,241	6,035	-16.7	3,220	3,499	8.7	11,325	12,790	12.9
Kalkaska	6.7	6.1	-9.5	596	552	-7.4	238	314	31.9	843	941	11.6
Kent	6.2	5.0	-20.3	19,875	16,108	-19.0	8,189	7,920	-3.3	25,221	28,124	11.5
Keweenaw	12.5	9.9	-21.1	141	111	-20.9	6	23	283.3	81	87	8.3
Lake	10.0	8.7	-13.0	445	379	-14.9	227	260	14.5	1,044	1,131	8.3
Lapeer	7.6	6.7	-11.9	3,415	3,015	-11.7	707	706	-0.1	2,111	2,300	9.0
Leelanau**	5.1	4.6	-10.5	596	547	-8.3	**	117	*	281	342	21.4

<sup>1</sup>In some cases the Michigan number is slightly different from the county total.

\*Cannot be calculated.

\*\*Public Assistance data for Charlevoix is combined with and reported as Emmet, Public Assistance data for Leelanau is combined with and reported as Grand Traverse, and Public Assistance data for Missaukee is combined with and reported as Wexford.

Data sources: Unemployment: Bureau of Labor Statistics, Local Area Unemployment Statistics; Public Assistance: Michigan Department of Human Services.

## Family Independence Program (Cash Assistance)


Total Number of Applications			Average Number of Families Receiving Cash Assistance Per Month			Application Approvals: Unemployment Benefits Exhausted, Layoff or Discharge, Depleted Savings, Non-Exempt Property or Loss of Other Resources			Total Number of Denials		Income Exceeds Standards as Percent of Denials		Percent of Cases Without Earned Income, Out of Total Cases Expected to Work	
Qtr 4 2004	Qtr 4 2005	% change	Qtr 4 2004	Qtr 4 2005	% change	Qtr 4 2004	Qtr 4 2005	% change	Qtr 4 2004	Qtr 4 2005	Qtr 4 2004	Qtr 4 2005	Qtr 4 2004	Qtr 4 2005
<b>45,510</b>	<b>44,252</b>	<b>-2.8</b>	<b>78,514</b>	<b>78,740</b>	<b>0.3</b>	<b>2,334</b>	<b>2,228</b>	<b>-4.5</b>	<b>21,130</b>	<b>20,658</b>	<b>44.6</b>	<b>45.4</b>	<b>67%</b>	<b>66%</b>
38	39	2.6	43	40	-7.8	0	0	*	15	21	60.0	61.9	19%	61%
24	27	12.5	23	21	-8.8	2	1	-50.0	11	15	54.5	66.7	13%	33%
477	439	-8.0	355	380	6.9	29	39	34.5	239	208	53.1	52.9	55%	61%
145	129	-11.0	171	175	2.5	28	27	-3.6	65	50	67.7	54.0	34%	33%
97	96	-1.0	69	66	-4.3	3	4	33.3	45	47	64.4	63.8	20%	43%
68	75	10.3	96	95	-1.0	4	10	150.0	39	32	48.7	46.9	42%	43%
48	43	-10.4	59	55	-6.8	0	0	*	11	12	18.2	41.7	28%	39%
201	250	24.4	245	246	0.3	17	20	17.6	90	101	57.8	59.4	64%	46%
535	519	-3.0	787	776	-1.4	32	35	9.4	231	188	48.9	51.6	49%	50%
76	60	-21.1	42	40	-4.0	13	5	-61.5	45	57	53.3	52.6	38%	46%
1,073	1,028	-4.2	1,283	1,282	-0.1	29	8	-72.4	484	488	41.9	41.0	55%	55%
293	323	10.2	235	232	-1.3	23	38	65.2	152	160	52.0	55.6	52%	63%
971	960	-1.1	1,440	1,536	6.6	72	67	-6.9	454	397	50.4	57.4	70%	67%
259	217	-16.2	312	297	-4.7	12	19	58.3	118	99	52.5	59.6	66%	67%
**	67	*	48	55	13.8	2	2	0.0	26	41	50.0	48.8	**	**
153	132	-13.7	122	109	-10.7	15	7	-53.3	75	75	57.3	49.3	54%	84%
184	140	-23.9	170	156	-8.4	26	11	-57.7	81	58	50.6	55.2	80%	70%
210	213	1.4	304	288	-5.2	26	10	-61.5	105	91	48.6	44.0	50%	61%
148	169	14.2	135	115	-14.8	9	6	-33.3	82	116	46.3	57.8	58%	64%
88	92	4.5	80	87	9.2	6	5	-16.7	50	44	64.0	50.0	70%	49%
136	139	2.2	144	138	-3.9	14	5	-64.3	46	55	60.9	47.3	71%	67%
92	73	-20.7	64	72	12.5	9	8	-11.1	43	40	60.5	62.5	33%	48%
367	372	1.4	337	362	7.3	7	3	-57.1	205	200	48.3	56.5	55%	63%
107	102	-4.7	84	62	-25.9	2	2	0.0	46	63	52.2	57.1	10%	41%
3,451	3,418	-1.0	6,577	6,635	0.9	195	182	-6.7	1,529	1,560	41.9	39.2	58%	61%
133	176	32.3	140	144	3.3	5	8	60.0	62	81	40.3	48.1	55%	61%
51	49	-3.9	145	155	6.9	5	6	20.0	19	18	63.2	77.8	50%	76%
286	283	-1.0	160	157	-1.9	9	10	11.1	185	169	62.7	65.7	70%	82%
248	217	-12.5	241	272	13.0	19	12	-36.8	141	115	55.3	57.4	58%	60%
225	227	0.9	184	186	1.5	28	23	-17.9	102	116	56.9	52.6	62%	72%
53	76	43.4	84	99	17.4	3	9	200.0	14	24	50.0	66.7	41%	54%
76	71	-6.6	114	108	-5.2	13	11	-15.4	22	22	72.7	72.7	71%	68%
1,440	1,422	-1.3	1,705	1,810	6.2	66	50	-24.2	715	753	41.5	42.4	66%	62%
305	267	-12.5	238	226	-5.2	8	10	25.0	149	140	55.7	46.4	62%	63%
139	102	-26.6	146	135	-7.5	4	3	-25.0	70	52	45.7	65.4	55%	35%
58	51	-12.1	67	73	8.5	7	8	14.3	16	11	50.0	54.5	24%	59%
265	265	0.0	292	305	4.3	4	6	50.0	115	124	51.3	49.2	67%	63%
840	790	-6.0	1,116	1,066	-4.5	43	39	-9.3	395	426	39.7	37.8	68%	67%
1,220	1,188	-2.6	1,745	1,761	0.9	58	66	13.8	481	507	42.6	37.7	68%	62%
85	103	21.2	65	75	15.5	19	25	31.6	36	39	58.3	51.3	22%	57%
2,878	2,711	-5.8	4,478	4,289	-4.2	163	153	-6.1	1,449	1,313	44.8	48.6	41%	49%
1	3	200.0	4	4	0.0	1	0	-100.0	0	2	*	*	0%	0%
104	99	-4.8	137	141	3.2	4	9	125.0	29	29	37.9	44.8	73%	76%
265	258	-2.6	245	240	-2.3	2	5	150.0	171	156	43.9	52.6	61%	67%
**	29	*	24	27	12.5	0	0	*	16	21	62.5	66.7	**	**

<sup>1</sup>In some cases the Michigan number is slightly different from the county total.

\*Cannot be calculated.

\*\*Public Assistance data for Charlevoix is combined with and reported as Emmet, Public Assistance data for Leelanau is combined with and reported as Grand Traverse, and Public Assistance data for Missaukee is combined with and reported as Wexford.

Data sources: Unemployment: Bureau of Labor Statistics, Local Area Unemployment Statistics; Public Assistance: Michigan Department of Human Services.

 Prepared by: Michigan League for Human Services	Unemployment (data not seasonally adjusted)						Food Assistance Program					
	Unemployment Rate			Number Unemployed			Total Number of Applications			Average Number of Households Receiving Food Assistance Per Month		
	Qtr 4 2004	Qtr 4 2005	% change	Qtr 4 2004	Qtr 4 2005	% change	Qtr 4 2004	Qtr 4 2005	% change	Qtr 4 2004	Qtr 4 2005	% change
Lenawee	6.9	6.0	-13.1	3,451	3,012	-12.7	1,027	1,120	9.1	3,084	3,427	11.1
Livingston	4.8	4.8	-1.4	4,469	4,424	-1.0	733	831	13.4	1,923	2,265	17.8
Luce	7.5	6.5	-13.3	219	190	-13.1	87	86	-1.1	323	362	12.0
Mackinac	13.1	10.8	-17.6	761	612	-19.6	135	135	0.0	333	348	4.7
Macomb	6.8	6.0	-10.8	28,815	25,592	-11.2	6,428	6,957	8.2	21,911	24,875	13.5
Manistee	8.1	6.9	-14.4	962	835	-13.3	311	318	2.3	1,275	1,364	7.0
Marquette	5.6	4.7	-16.0	2,013	1,727	-14.2	579	592	2.2	2,409	2,693	11.8
Mason	8.8	6.7	-23.5	1,336	1,017	-23.8	347	406	17.0	1,399	1,613	15.2
Mecosta	7.0	6.2	-11.0	1,409	1,229	-12.7	624	659	5.6	2,331	2,784	19.4
Menominee	5.1	4.1	-20.8	691	559	-19.1	229	276	20.5	1,036	1,075	3.7
Midland	6.1	5.1	-15.9	2,533	2,107	-16.8	795	868	9.2	2,968	3,402	14.6
Missaukee**	6.8	5.9	-12.3	466	413	-11.3	**	**	*	**	665	*
Monroe	5.8	5.1	-12.6	4,498	3,981	-11.5	1,254	1,328	5.9	4,161	4,672	12.3
Montcalm	7.7	8.4	9.6	2,299	2,457	6.9	684	846	23.7	2,653	3,054	15.1
Montmorency	11.9	9.3	-21.6	532	432	-18.8	133	144	8.3	591	644	8.9
Muskegon	7.1	6.1	-15.0	6,395	5,498	-14.0	3,207	3,423	6.7	12,407	13,596	9.6
Newaygo	7.3	6.3	-14.2	1,689	1,455	-13.8	631	691	9.5	2,406	2,545	5.8
Oakland	5.7	5.1	-10.0	36,617	33,169	-9.4	9,085	9,474	4.3	24,829	26,902	8.3
Oceana	8.5	7.6	-11.0	1,123	1,008	-10.2	414	443	7.0	1,590	1,774	11.6
Ogemaw	7.7	6.4	-16.5	754	653	-13.4	297	301	1.3	1,654	1,816	9.8
Onotonagon	7.3	6.5	-10.6	259	235	-9.1	55	90	63.6	330	371	12.4
Osceola	8.4	6.0	-28.6	890	631	-29.1	325	245	-24.6	1,368	1,413	3.3
Oscoda	10.9	9.2	-15.9	425	358	-15.8	141	115	-18.4	603	627	4.1
Otsego	7.5	6.2	-17.0	946	808	-14.5	306	337	10.1	1,039	1,158	11.4
Ottawa	5.3	4.5	-14.6	7,110	6,020	-15.3	1,614	1,706	5.7	4,816	5,298	10.0
Presque Isle	9.8	8.5	-12.9	645	562	-12.8	114	123	7.9	513	539	5.1
Roscommon	7.8	6.6	-14.6	890	801	-10.0	369	415	12.5	1,719	1,847	7.5
Saginaw	8.0	6.5	-18.4	8,040	6,546	-18.6	3,409	3,721	9.2	13,616	15,019	10.3
Saint Clair	7.7	6.9	-11.2	6,608	5,867	-11.2	1,867	2,159	15.6	6,825	7,579	11.1
Saint Joseph	6.1	5.4	-11.4	1,905	1,728	-9.3	879	965	9.8	2,817	3,143	11.6
Sanilac	8.2	6.5	-20.7	1,792	1,429	-20.2	493	498	1.0	2,136	2,312	8.3
Schoolcraft	10.2	9.1	-11.1	413	371	-10.1	76	126	65.8	456	490	7.3
Shiawassee	7.8	6.5	-17.0	2,939	2,473	-15.9	817	902	10.4	2,943	3,273	11.2
Tuscola	7.8	6.5	-17.4	2,352	1,959	-16.7	508	587	15.6	2,121	2,314	9.1
Van Buren	7.3	5.9	-18.8	2,935	2,412	-17.8	1,410	1,431	1.5	4,387	4,629	5.5
Washtenaw	4.1	3.6	-12.1	7,946	7,136	-10.2	2,490	2,789	12.0	7,996	9,289	16.2
Wayne	8.7	7.8	-10.7	80,363	71,507	-11.0	39,666	38,892	-2.0	146,423	159,333	8.8
Wexford**	7.5	6.1	-19.5	1,134	923	-18.6	515	530	2.9	2,087	2,095	0.4

FACT

The Earned Income Tax Credit (EITC) reduces the tax burden on low- and moderate-income workers. In 2004, 638,232 working families in Michigan claimed a total of more than \$1.13 billion in tax credits through the EITC.

\*Cannot be calculated.

\*\*Public Assistance data for Charlevoix is combined with and reported as Emmet, Public Assistance data for Leelanau is combined with and reported as Grand Traverse, and Public Assistance data for Missaukee is combined with and reported as Wexford.

Data sources: Unemployment: Bureau of Labor Statistics, Local Area Unemployment Statistics; Public Assistance: Michigan Department of Human Services.

## Family Independence Program (Cash Assistance)

Total Number of Applications			Average Number of Families Receiving Cash Assistance Per Month			Application Approvals: Unemployment Benefits Exhausted, Layoff or Discharge, Depleted Savings, Non-Exempt Property or Loss of Other Resources			Total Number of Denials		Income Exceeds Standards as Percent of Denials		Percent of Cases Without Earned Income, Out of Total Cases Expected to Work	
Qtr 4 2004	Qtr 4 2005	% change	Qtr 4 2004	Qtr 4 2005	% change	Qtr 4 2004	Qtr 4 2005	% change	Qtr 4 2004	Qtr 4 2005	Qtr 4 2004	Qtr 4 2005	Qtr 4 2004	Qtr 4 2005
367	381	3.8	373	368	-1.4	12	6	-50.0	189	184	48.7	44.6	55%	50%
286	318	11.2	149	147	-1.3	11	14	27.3	174	222	51.1	54.1	65%	49%
34	27	-20.6	30	23	-21.3	1	1	0.0	15	14	60.0	42.9	61%	62%
64	41	-35.9	38	28	-25.4	3	3	0.0	35	25	54.3	56.0	0%	0%
1,972	2,070	5.0	2,499	2,545	1.8	104	94	-9.6	1,056	1,090	47.5	45.4	68%	63%
106	109	2.8	125	126	1.1	11	15	36.4	45	46	57.8	56.5	50%	61%
168	156	-7.1	244	252	3.0	20	9	-55.0	59	52	45.8	42.3	61%	59%
150	167	11.3	196	214	9.2	20	22	10.0	51	69	41.2	56.5	65%	66%
208	189	-9.1	214	239	11.7	2	7	250.0	80	65	50.0	60.0	65%	66%
67	81	20.9	85	73	-14.2	9	14	55.6	23	29	43.5	41.4	77%	50%
275	297	8.0	340	345	1.5	26	26	0.0	143	153	56.6	53.6	48%	55%
**	51	*	55	69	26.2	1	6	500.0	20	32	65.0	56.3	**	**
537	513	-4.5	606	648	6.9	12	15	25.0	273	224	43.2	46.9	68%	69%
330	306	-7.3	272	305	12.0	16	28	75.0	156	172	54.5	57.6	69%	74%
50	41	-18.0	49	50	2.7	4	3	-25.0	25	21	60.0	61.9	90%	52%
1,251	1,268	1.4	2,668	2,640	-1.0	89	86	-3.4	449	523	48.3	54.1	71%	71%
229	231	0.9	276	275	-0.5	7	2	-71.4	73	83	34.2	37.3	74%	77%
2,591	2,524	-2.6	3,365	3,329	-1.1	96	62	-35.4	1,521	1,487	47.8	48.9	67%	68%
199	229	15.1	274	310	13.0	34	40	17.6	59	78	69.5	60.3	60%	60%
114	122	7.0	156	177	13.5	25	36	44.0	26	40	61.5	60.0	56%	46%
32	31	-3.1	37	37	0.0	3	2	-33.3	9	8	55.6	100.0	38%	53%
142	101	-28.9	164	156	-4.5	7	9	28.6	65	39	47.7	46.2	69%	**
51	44	-13.7	52	56	8.4	2	7	250.0	17	12	58.8	75.0	28%	44%
106	113	6.6	71	86	21.7	2	6	200.0	50	55	72.0	63.6	52%	47%
490	491	0.2	457	468	2.3	6	12	100.0	221	210	52.5	50.0	59%	51%
40	30	-25.0	43	42	-3.8	2	1	-50.0	22	14	59.1	50.0	0%	42%
141	126	-10.6	163	161	-1.4	2	10	400.0	70	49	54.3	51.0	39%	38%
1,351	1,346	-0.4	3,003	2,992	-0.3	111	112	0.9	611	598	41.7	41.6	51%	47%
717	769	7.3	1,005	960	-4.5	68	74	8.8	299	309	44.8	45.0	63%	57%
373	347	-7.0	302	323	7.1	32	32	0.0	156	185	38.5	41.1	62%	64%
176	143	-18.8	232	209	-10.0	48	35	-27.1	90	55	45.6	49.1	55%	58%
38	41	7.9	45	44	-2.2	3	0	-100.0	10	14	40.0	28.6	68%	71%
378	367	-2.9	296	316	6.8	11	7	-36.4	205	201	56.6	50.7	41%	54%
212	217	2.4	233	249	6.9	27	18	-33.3	87	95	51.7	46.3	56%	68%
600	558	-7.0	629	597	-5.0	38	56	47.4	237	213	47.3	54.5	59%	68%
822	757	-7.9	1,230	1,281	4.1	15	9	-40.0	382	362	35.6	37.3	67%	63%
12,550	11,942	-4.8	33,732	33,763	0.1	411	365	-11.2	5,544	5,196	37.7	38.6	71%	70%
253	199	-21.3	251	243	-3.1	7	17	142.9	109	98	60.6	62.2	67%	68%

## FACT

Under Michigan's new law, the minimum wage will increase to \$6.95 an hour on October 1, 2006 and to \$7.40 an hour in two more steps, putting more money into the pockets of low-wage workers.

\*Cannot be calculated.

\*\*Public Assistance data for Charlevoix is combined with and reported as Emmet, Public Assistance data for Leelanau is combined with and reported as Grand Traverse, and Public Assistance data for Missaukee is combined with and reported as Wexford.

Data sources: Unemployment: Bureau of Labor Statistics, Local Area Unemployment Statistics; Public Assistance: Michigan Department of Human Services.

Employment Trends by Selected Industries in Michigan  
(data not seasonally adjusted, rounded to the nearest hundred)

Industry	Avg 2004 Qtr 4	Avg 2005 Qtr 4	% Change	Industry	Avg 2004 Qtr 4	Avg 2005 Qtr 4	% Change
<b>TOTAL NONFARM</b>	<b>4,455,100</b>	<b>4,438,000</b>	<b>-0.4</b>	<b>Trade Transportation &amp; Utilities</b>	<b>824,800</b>	<b>816,200</b>	<b>-1.0</b>
<b>TOTAL PRIVATE</b>	<b>3,751,200</b>	<b>3,739,400</b>	<b>-0.3</b>	• <b>Wholesale Trade</b>	<b>171,100</b>	<b>170,400</b>	<b>-0.4</b>
<b>GOODS PRODUCING</b>	<b>905,900</b>	<b>887,600</b>	<b>-2.0</b>	Merchant Wholesalers			
<b>SERVICE-PROVIDING</b>	<b>3,549,200</b>	<b>3,550,400</b>	<b>0.0</b>	Durable Goods	96,300	96,200	-0.1
<b>Natural Resources and Mining</b>	<b>8,200</b>	<b>8,400</b>	<b>2.4</b>	Merchant Wholesalers			
Mining	6,600	6,700	1.5	Nondurable Goods	50,100	50,100	0.0
Mining except oil and gas	4,300	4,400	2.3	Wholesale Electronic Markets			
<b>Construction</b>	<b>198,500</b>	<b>197,900</b>	<b>-0.3</b>	and Agents and Brokers	24,700	24,100	-2.4
Construction of Buildings	47,800	47,800	0.0	• <b>Retail Trade</b>	<b>525,000</b>	<b>516,100</b>	<b>-1.7</b>
Heavy and Civil Engineering	19,200	19,400	1.0	Motor Vehicle and Parts Dealers	61,600	60,600	-1.6
Specialty Trade Contractors	131,600	130,700	-0.7	Furniture and Home Furnishings	19,100	18,700	-2.1
<b>Manufacturing</b>	<b>699,100</b>	<b>681,300</b>	<b>-2.5</b>	Electronics and Appliance	18,800	19,200	2.1
• <b>Durable Goods</b>	<b>547,800</b>	<b>530,700</b>	<b>-3.1</b>	Building Material and Garden			
Nonmetallic Mineral Products	16,800	16,700	-0.6	Equip. and Supplies Dealers	45,500	45,800	0.7
Primary Metal Manufacturing	27,600	27,000	-2.2	Food and Beverage Stores	887,000	85,300	-2.0
Fabricated Metal Product	84,400	85,300	1.1	Health and Personal Care	33,100	33,900	2.4
Machinery Manufacturing	75,900	75,200	-0.9	Gasoline Stations	25,600	24,900	-2.7
Computer and Electronic Products	19,700	20,400	3.6	Clothing and Clothing Accessories	44,100	45,200	2.5
Electrical Equipment and				Sporting Goods, Hobby, Book,			
Appliances	14,000	12,600	-10.0	and Music Stores	26,500	25,800	-2.6
Motor Vehicle Manufacturing	70,400	65,300	-7.2	General Merchandise Stores	121,000	117,300	-3.1
Motor Vehicle Parts				Miscellaneous Store Retail	30,500	29,600	-3.0
Manufacturing	167,100	161,100	-3.6	• <b>Transportation &amp; Warehousing</b>	<b>128,700</b>	<b>129,700</b>	<b>0.8</b>
Furniture and Related Products	25,900	25,100	-3.1	Rail Transportation	5,100	5,000	-2.0
Miscellaneous Manufacturing	17,600	17,500	-0.6	Truck Transportation	37,000	38,700	4.6
• <b>Non-Durable Goods</b>	<b>151,300</b>	<b>150,600</b>	<b>-0.5</b>	Couriers and Messengers	13,900	14,000	0.7
Food Manufacturing	33,400	34,800	4.2	Warehousing and Storage	16,000	16,100	0.6
Paper Manufacturing	14,800	14,900	0.7	<b>Information</b>	<b>68,500</b>	<b>66,900</b>	<b>-2.3</b>
Printing and Related Support				Publishing Industries	25,200	24,400	-3.2
Activities	18,200	17,600	-3.3	Telecommunications	22,400	22,000	-1.8
Chemical Manufacturing	30,300	30,000	-1.0	<b>Financial Activities</b>	<b>216,800</b>	<b>218,300</b>	<b>0.7</b>
Plastics and Rubber Products	43,600	42,600	-2.3	Finance and Insurance	161,200	162,900	1.1
				Real Estate	37,800	37,800	0.0

Note: Industry details and subtotals may not sum to totals due to rounding.

Source: Department of Labor and Economic Growth/Office of Labor Market Information, Current Employment Statistics Section - (800) 225-3732

Employment Trends by Selected Industries in Michigan  
(data not seasonally adjusted, rounded to the nearest hundred)

Industry	Avg 2004 Qtr 4	Avg 2005 Qtr 4	% Change	Industry	Avg 2004 Qtr 4	Avg 2005 Qtr 4	% Change
<b>Professional &amp; Business Services</b>	<b>593,800</b>	<b>597,600</b>	<b>0.6</b>	Food Services and Drinking	303,800	306,600	0.9
Legal Services	29,900	30,000	0.3	<b>Other Services</b>	<b>178,100</b>	<b>178,900</b>	<b>0.4</b>
Accounting and Tax Preparation	27,100	27,000	-0.4	Repair and Maintenance	41,900	41,200	-1.7
Architectural Engineering	69,900	70,900	1.4	Personal and Laundry Services	41,300	41,700	1.0
Computer Systems Design	39,100	38,800	-0.8	Religious Grantmaking Civic Professional	94,900	96,000	1.2
Management, Scientific and Technical Consulting Services	18,800	19,700	4.8	<b>Government</b>	<b>703,800</b>	<b>698,600</b>	<b>-0.7</b>
Scientific Research and Development Services	23,900	24,000	0.4	•Federal Government	<b>55,400</b>	<b>54,800</b>	<b>-1.1</b>
Advertising and Related	16,100	16,000	-0.6	Federal Government Hospital Services	5,800	5,700	-1.7
Other Professional Scientific and Technical Services	15,700	16,000	1.9	U.S. Postal Service	27,800	27,900	0.4
Management of Companies	65,400	63,900	-2.3	•State Government	<b>177,800</b>	<b>176,700</b>	<b>-0.6</b>
Administrative & Support Services	282,900	286,200	1.2	State Government Educational Services	105,200	105,600	0.4
<b>Educational and Health Services</b>	<b>568,600</b>	<b>574,400</b>	<b>1.0</b>	State Government Hospital Services	14,300	14,600	2.1
•Educational Services (see also Government)	<b>78,500</b>	<b>78,600</b>	<b>0.1</b>	•Local Government	<b>470,600</b>	<b>467,100</b>	<b>-0.7</b>
•Health Care & Social Assistance	<b>490,100</b>	<b>495,800</b>	<b>1.2</b>	Local Government Educational Services	286,100	280,700	-1.9
Ambulatory Health Care Services	164,500	165,900	0.9	Local Government Hospitals	13,500	13,800	2.2
Offices of Physicians	65,700	67,200	2.3	Local Government Elementary and Secondary Schools	262,900	256,400	-2.5
Offices of Dentists	31,600	31,600	0.0	Local Government Junior Colleges	22,500	22,500	0.0
Offices of Other Health Professionals	19,200	19,200	0.0				
Outpatient Care Centers	13,500	13,600	0.7				
Home Health Care Service	24,900	24,800	-0.4				
Hospitals	179,900	182,700	1.6				
Nursing and Residential Care	88,700	89,800	1.2				
—Nursing Care Facilities	41,600	41,700	0.2				
—Community Care Facilities	22,200	23,200	4.5				
Social Assistance	57,000	57,400	0.7				
—Individual and Family Services	24,700	25,000	1.2				
<b>Leisure and Hospitality</b>	<b>394,800</b>	<b>399,500</b>	<b>1.2</b>				
Performing Arts Spectator Activities	8,900	9,000	1.1				
Amusement, Gambling & Recreation	45,100	46,500	3.1				
Accommodation	33,200	33,300	0.3				

**VISIT OUR WEBSITE FOR MORE INFORMATION!**

The "Work and Wages" section of the Michigan League for Human Services website has information on Workforce Development, Work Supports, Unemployment, and Self-Sufficiency. It also includes back issues of the Economic Security Bulletin. Go to <http://www.MiLHS.org> and click the "Work and Wages" tab at the right.

Note: Industry details and subtotals may not sum to totals due to rounding.

Source: Department of Labor and Economic Growth/Office of Labor Market Information, Current Employment Statistics Section - (800) 225-3732



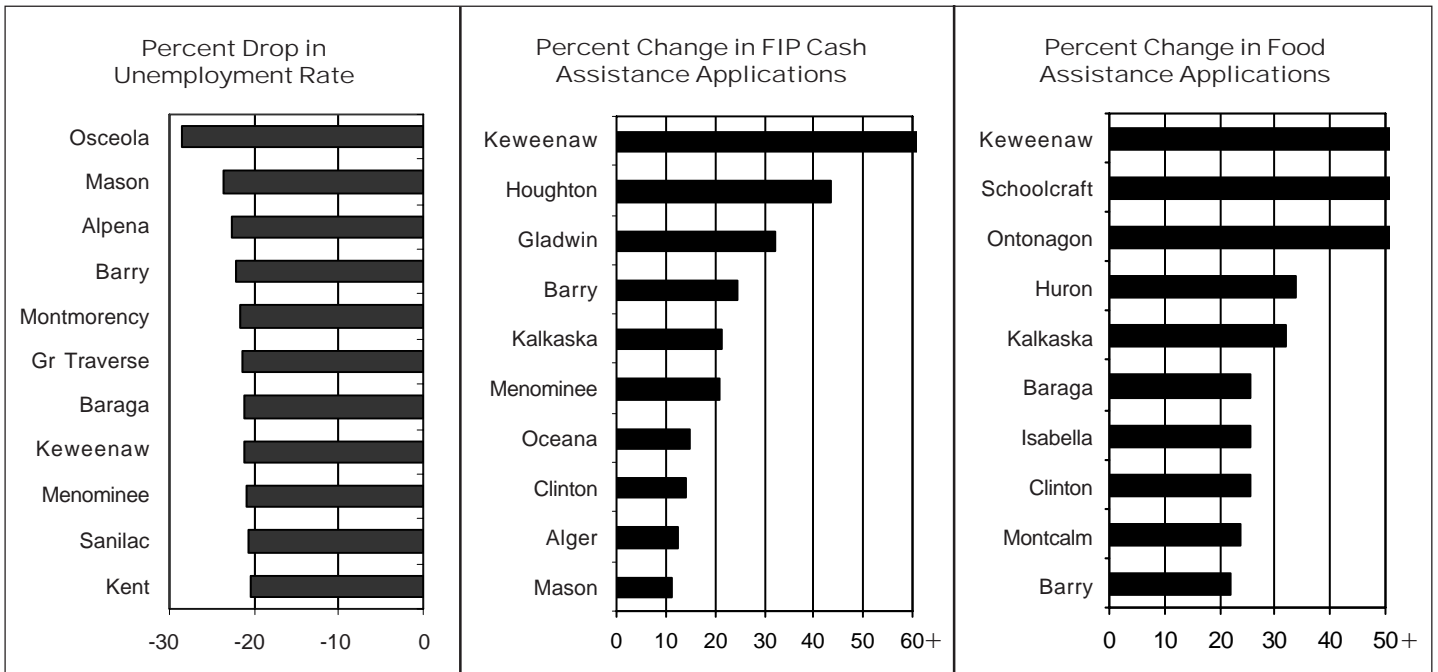
**Michigan League for Human Services**

1115 South Pennsylvania Avenue, Suite 202  
 Lansing, MI 48912-1658  
 (517) 487-5436 — Fax (517) 371-4546  
 Web site: www.milhs.org

*A United Way Agency*

Nonprofit  
 Organization  
 U.S. Postage  
**Paid**  
 Lansing, MI  
 Permit #1421

Percentage Change in Michigan Counties With Largest Increases  
 Fourth Quarter 2004 — Fourth Quarter 2005



Sources: Unemployment: Bureau of Labor Statistics, Local Area Unemployment Statistics; Public Assistance: Michigan Department of Human Services