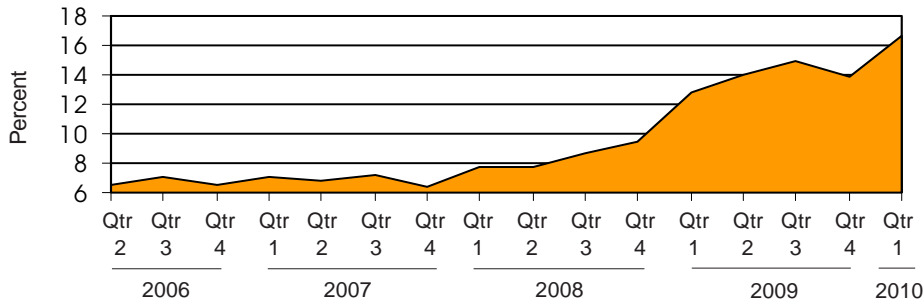
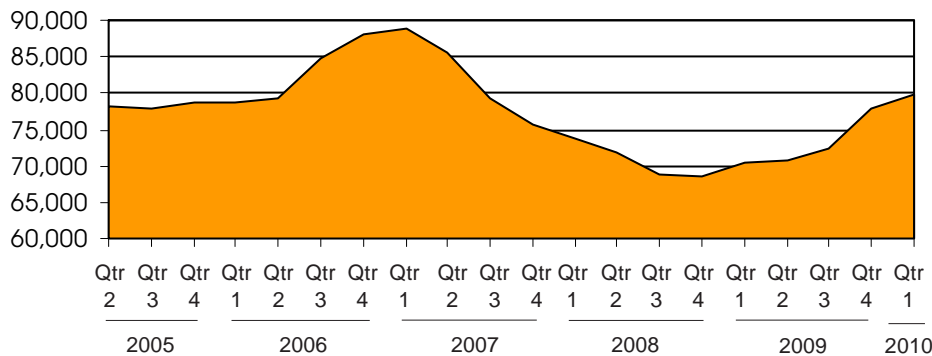


Michigan's Unemployment Rate Over the Past Four Years
(not seasonally adjusted)



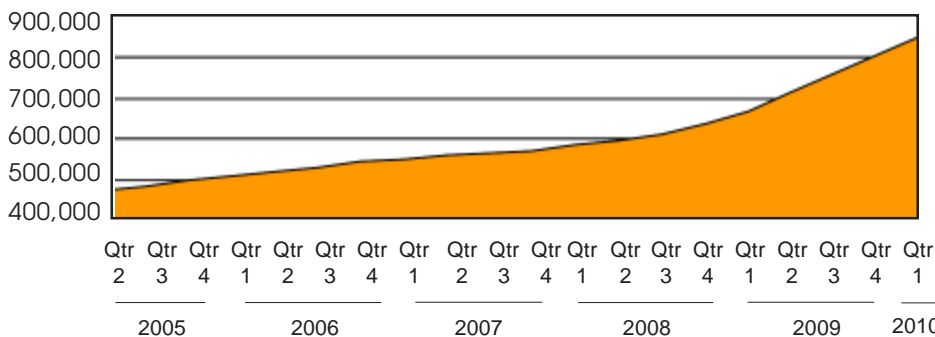
Source: Bureau of Labor Statistics

Family Independence Program Cases During
the Past Five Years (regular FIP only)



Source: Michigan Department of Human Services

Food Assistance Households During the Past Five Years



Source: Michigan Department of Human Services


Cash Assistance cases inch back up to 80,000; Food Assistance surpasses 850,000

Cash Assistance

Family Independence Program cases during Quarter One reached just under 80,000 families. This is the highest level in the past three years. The county with the highest percent of its population receiving cash assistance is Muskegon at 5.3 percent, followed by Genesee at 4.7 percent and Wayne at 4.6 percent. Twenty-five counties increased their FIP caseloads by at least 20 percent compared to the same time last year.

Food Assistance

During the first quarter, 17.6 percent of Michigan residents lived in households receiving Food Assistance. A monthly average of 850,056 households received assistance, marking a 27 percent increase over the same time in 2009. Counties with the highest percentage of their residents receiving Food Assistance were Lake and Clare, at 28.5 and 27 percent respectively.

 Prepared by: Michigan League for Human Services	Unemployment (data not seasonally adjusted)						Food Assistance Program				
	Unemployment Rate			Number Unemployed			Average Number of Households Per Month			Percent of Population Receiving Assistance ²	
	County	Qtr 1 2009	Qtr 1 2010	+/- points	Qtr 1 2009	Qtr 1 2010	% change	Qtr 1 2009	Qtr 1 2010	% change	Qtr 1 2009
Michigan¹	12.9	14.8	1.9	629,537	712,813	13.2	668,052	850,056	27.2	13.9%	17.6%
Alcona	19.2	23.9	4.7	788	952	20.8	635	804	26.6	11.6%	15.4%
Alger	14.8	16.6	1.8	631	691	9.6	447	566	26.7	9.5%	12.7%
Allegan	12.6	15.2	2.6	6,809	8,054	18.3	5,240	6,586	25.7	10.8%	13.8%
Alpena	13.9	16.2	2.3	2,088	2,378	13.9	2,635	3,121	18.4	17.0%	20.4%
Antrim	15.5	19.3	3.7	1,776	2,125	19.7	1,267	1,562	23.2	12.4%	15.4%
Arenac	18.2	21.4	3.2	1,433	1,577	10.0	1,415	1,668	17.9	17.8%	21.8%
Baraga	23.8	28.8	5.0	1,076	1,274	18.4	517	605	17.0	13.1%	14.4%
Barry	9.8	12.4	2.5	2,889	3,590	24.3	2,938	3,698	25.8	11.4%	14.4%
Bay	11.3	14.3	3.0	6,213	7,712	24.1	7,992	9,824	22.9	15.0%	18.2%
Benzie	15.4	19.3	3.9	1,350	1,690	25.2	963	1,135	17.9	12.5%	14.7%
Berrien	12.0	14.9	2.9	9,200	11,331	23.2	11,447	14,273	24.7	14.8%	18.5%
Branch	14.2	14.8	0.7	3,085	3,078	-0.2	2,958	3,692	24.8	14.3%	18.5%
Calhoun	11.0	12.9	1.9	7,571	8,699	14.9	13,609	16,163	18.8	20.2%	23.7%
Cass	11.2	13.6	2.4	2,904	3,444	18.6	3,509	4,237	20.7	15.8%	19.3%
Charlevoix	16.0	18.9	2.8	2,183	2,535	16.1	1,122	1,536	36.8	10.0%	13.8%
Cheboygan	21.3	22.8	1.5	2,399	2,466	2.8	1,970	2,278	15.6	16.1%	19.1%
Chippewa	13.5	16.5	3.1	2,299	2,819	22.7	2,149	2,822	31.3	11.4%	14.9%
Clare	16.5	19.4	2.9	2,143	2,480	15.7	3,283	3,878	18.1	22.4%	26.9%
Clinton	9.2	10.6	1.4	3,459	3,956	14.4	2,472	3,265	32.1	7.3%	9.3%
Crawford	13.2	15.6	2.4	829	968	16.8	1,099	1,318	20.0	15.8%	19.6%
Delta	12.6	15.6	3.0	2,428	2,946	21.3	2,676	3,125	16.8	14.1%	17.0%
Dickinson	10.8	13.7	2.9	1,542	1,908	23.7	1,388	1,697	22.3	10.3%	12.8%
Eaton	10.4	10.9	0.5	6,116	6,326	3.4	4,470	6,035	35.0	9.3%	12.1%
Emmet	16.2	19.9	3.7	3,071	3,762	22.5	1,830	2,170	18.6	11.7%	13.7%
Genesee	14.3	16.2	1.9	28,612	31,793	11.1	41,880	51,591	23.2	20.2%	24.9%
Gladwin	16.7	20.2	3.5	1,730	2,050	18.5	2,088	2,448	17.2	16.7%	20.1%
Gogebic	11.9	14.9	3.0	904	1,101	21.8	1,330	1,617	21.5	15.8%	19.1%
Gr. Traverse	11.8	15.0	3.3	5,560	7,031	26.5	4,835	5,926	22.6	11.0%	13.6%
Gratiot	13.8	15.6	1.9	2,713	3,058	12.7	2,547	3,156	23.9	13.8%	17.0%
Hillsdale	17.3	18.2	0.9	3,658	3,604	-1.5	2,914	3,473	19.2	14.9%	18.1%
Houghton	10.4	13.0	2.6	1,866	2,306	23.6	2,019	2,639	30.7	11.2%	14.3%
Huron	15.5	18.0	2.4	2,519	2,741	8.8	1,959	2,305	17.6	12.5%	14.7%
Ingham	10.8	12.0	1.2	16,417	18,182	10.7	20,962	28,399	35.5	14.6%	18.8%
Ionia	13.7	15.4	1.7	4,132	4,549	10.1	3,605	4,527	25.6	12.3%	16.1%
Iosco	19.3	22.8	3.6	1,987	2,247	13.1	2,391	2,941	23.0	18.8%	22.9%
Iron	11.8	14.8	3.0	685	845	23.4	743	924	24.4	12.8%	16.6%
Isabella	8.0	10.0	2.0	3,049	3,843	26.0	6,727	9,293	38.1	15.9%	20.9%
Jackson	12.2	15.1	2.9	9,413	11,297	20.0	10,456	13,415	28.3	14.2%	18.1%
Kalamazoo	8.8	11.4	2.6	11,698	14,864	27.1	17,822	24,335	36.5	13.9%	18.0%
Kalkaska	13.9	17.4	3.4	1,160	1,433	23.6	1,343	1,642	22.3	17.5%	22.6%
Kent	10.1	12.1	2.0	31,724	37,394	17.9	37,077	47,634	28.5	13.0%	16.3%
Keweenaw	14.9	16.7	1.8	167	184	10.2	104	125	19.8	8.7%	11.8%
Lake	17.5	19.8	2.3	696	788	13.2	1,282	1,556	21.4	22.9%	28.5%
Lapeer	17.7	19.5	1.8	7,792	8,546	9.7	3,872	5,130	32.5	10.1%	13.5%
Leelanau	9.8	13.3	3.5	1,041	1,410	35.4	491	718	46.3	5.1%	7.3%
Lenawee	14.8	17.1	2.3	7,244	8,062	11.3	5,558	6,971	25.4	12.4%	15.6%
Livingston	11.1	13.3	2.2	10,068	12,015	19.3	4,227	5,846	38.3	5.0%	7.1%
Luce	12.4	16.4	4.0	341	438	28.4	480	525	9.4	14.9%	16.6%
Mackinac	27.2	30.9	3.7	1,418	1,594	12.4	540	662	22.7	10.3%	13.0%
Macomb	14.7	15.8	1.1	60,710	64,146	5.7	38,623	52,600	36.2	9.9%	13.7%

¹In some cases the Michigan number is slightly different from the county total.

²Population figures based on U.S. Census Bureau county estimates from July of the previous year.

Data sources: Unemployment: Bureau of Labor Statistics, Local Area Unemployment Statistics; Public Assistance: Michigan Department of Human Services.


Family Independence Program (Cash Assistance)			Child Day Care						Medicaid					
Average Number of Families Receiving Cash Assistance Per Month ³			Percent of Population Receiving Assistance ²		Average Number of Children Receiving Care Per Month		Average Payment Per Child		Average Number of Persons Eligible for Medicaid ONLY (Excludes FIP & SSI Recipients)			Percent of Population Eligible for Medicaid (Includes FIP & SSI Recipients) ²		
Qtr 1 2009	Qtr 1 2010	% change	Qtr 1 2009	Qtr 1 2010	Qtr 1 2009	Qtr 1 2010	Qtr 1 2009	Qtr 1 2010	Qtr 1 2009	Qtr 1 2010	% change	Qtr 1 2009	Qtr 1 2010	
74,795	83,085	11.1	2.0%	2.3%	90,026	62,961	\$292	\$280	1,252,841	1,384,252	10.5	16.8%	18.5%	
25	32	28.0	0.5%	0.8%	17	21	\$176	\$155	1,353	1,485	9.8	14.4%	16.3%	
25	27	10.8	0.6%	0.6%	29	16	\$157	\$151	1,210	1,296	7.1	15.3%	16.6%	
394	433	9.8	0.9%	1.0%	547	446	\$249	\$245	14,253	16,216	13.8	14.8%	16.7%	
199	225	13.3	1.7%	2.0%	237	196	\$222	\$205	4,807	4,707	-2.1	21.2%	21.6%	
51	47	-7.2	0.5%	0.4%	129	84	\$237	\$225	3,547	3,864	8.9	16.9%	18.5%	
96	85	-11.5	1.5%	1.3%	115	95	\$204	\$198	2,683	2,896	8.0	21.1%	22.8%	
48	50	3.4	1.3%	1.4%	49	35	\$129	\$220	1,229	1,258	2.4	17.9%	18.2%	
239	211	-11.6	1.1%	1.0%	323	218	\$211	\$218	6,604	7,639	15.7	13.5%	15.3%	
696	708	1.8	1.7%	1.7%	1,264	979	\$239	\$233	14,262	15,657	9.8	17.3%	18.9%	
50	47	-5.3	0.7%	0.7%	79	46	\$225	\$272	2,443	2,574	5.4	16.3%	17.4%	
1,226	1,539	25.5	2.0%	2.6%	1,755	1,283	\$262	\$264	22,660	24,373	7.6	19.1%	20.7%	
295	393	33.4	1.8%	2.4%	335	268	\$242	\$257	7,116	7,605	6.9	19.1%	21.3%	
1,777	1,747	-1.7	3.5%	3.4%	1,423	1,153	\$276	\$259	21,151	23,051	9.0	22.2%	23.6%	
311	337	8.4	1.6%	1.8%	437	310	\$265	\$261	7,624	8,442	10.7	18.7%	20.7%	
49	52	5.4	0.4%	0.4%	120	76	\$219	\$227	3,129	3,679	17.6	13.6%	16.1%	
101	105	4.3	0.9%	0.9%	144	93	\$205	\$245	4,676	4,836	3.4	20.8%	21.9%	
152	183	20.4	1.0%	1.2%	202	186	\$226	\$221	4,797	5,055	5.4	15.4%	16.6%	
262	298	13.8	2.2%	2.6%	198	132	\$217	\$255	5,726	5,913	3.3	24.9%	26.4%	
112	113	0.9	0.4%	0.4%	294	201	\$237	\$277	5,558	6,176	11.1	9.2%	10.1%	
61	57	-6.0	1.1%	1.0%	99	63	\$213	\$234	2,292	2,561	11.7	19.1%	21.3%	
139	167	20.1	0.9%	1.2%	254	167	\$194	\$193	5,544	5,837	5.3	18.2%	19.6%	
50	52	2.6	0.4%	0.4%	166	125	\$160	\$186	3,845	4,052	5.4	16.4%	17.6%	
251	274	9.2	0.6%	0.6%	758	501	\$254	\$265	10,243	11,697	14.2	11.3%	12.9%	
59	53	-10.7	0.4%	0.3%	192	124	\$202	\$240	5,047	5,012	-0.7	17.0%	16.7%	
6,215	7,193	15.7	4.0%	4.7%	7,959	6,089	\$339	\$280	64,881	68,494	5.6	22.2%	24.1%	
187	164	-12.1	1.8%	1.6%	142	103	\$222	\$210	4,157	4,394	5.7	20.5%	21.6%	
173	186	7.5	2.9%	3.3%	66	54	\$164	\$190	2,242	2,386	6.4	19.3%	20.9%	
143	166	15.8	0.4%	0.4%	586	365	\$227	\$243	11,529	12,120	5.1	15.2%	16.1%	
187	185	-0.9	1.2%	1.2%	360	212	\$234	\$229	6,485	6,823	5.2	18.5%	19.6%	
240	301	25.4	1.5%	1.9%	237	186	\$207	\$234	6,648	7,316	10.0	18.2%	20.3%	
72	86	19.9	0.5%	0.6%	131	91	\$190	\$163	4,940	5,177	4.8	16.3%	17.2%	
102	127	24.9	0.7%	1.0%	180	140	\$189	\$188	4,946	5,173	4.6	18.1%	19.3%	
1,457	1,797	23.4	1.4%	1.8%	2,541	1,692	\$290	\$295	33,990	36,517	7.4	15.8%	17.3%	
241	328	35.8	0.9%	1.3%	371	273	\$244	\$251	8,184	9,089	11.1	15.4%	17.6%	
150	175	16.7	1.4%	1.6%	185	98	\$211	\$196	4,496	4,747	5.6	21.4%	22.9%	
47	76	61.7	1.0%	1.8%	39	34	\$145	\$157	1,998	2,010	0.6	20.3%	21.8%	
196	207	5.4	0.7%	0.7%	456	302	\$222	\$244	7,890	8,557	8.5	14.2%	15.3%	
998	1,291	29.4	1.6%	2.2%	1,126	931	\$244	\$269	21,057	22,679	7.7	17.1%	18.7%	
1,726	2,256	30.8	1.9%	2.5%	2,338	1,789	\$279	\$283	28,981	30,984	6.9	15.7%	17.1%	
59	67	13.6	0.8%	1.0%	118	82	\$221	\$198	3,335	3,624	8.7	22.6%	24.8%	
4,504	5,109	13.4	1.9%	2.2%	6,123	4,468	\$301	\$291	78,963	87,264	10.5	17.1%	18.8%	
0	3	-	0.0%	0.2%	1	1	\$180	\$382	262	280	7.0	13.4%	14.2%	
82	119	45.5	1.8%	2.6%	84	52	\$200	\$207	2,136	2,196	2.8	26.3%	27.8%	
269	352	30.6	0.8%	1.1%	417	343	\$246	\$240	10,228	11,915	16.5	13.1%	15.5%	
11	21	87.9	0.1%	0.3%	52	46	\$231	\$215	1,345	1,758	30.7	6.7%	8.8%	
419	489	16.8	1.0%	1.2%	749	528	\$255	\$248	12,676	14,005	10.5	15.2%	17.1%	
214	272	27.5	0.3%	0.4%	304	253	\$313	\$301	11,118	13,802	24.1	6.8%	8.4%	
43	44	2.3	2.0%	2.0%	37	33	\$214	\$228	1,082	1,071	-1.0	21.7%	21.9%	
26	35	31.6	0.6%	0.9%	29	18	\$206	\$118	1,319	1,409	6.8	14.6%	16.0%	
3,260	4,037	23.9	1.1%	1.3%	4,450	3,298	\$330	\$295	84,903	99,782	17.5	12.7%	15.0%	

¹ In some cases the Michigan number is slightly different from the county total.

² Population figures based on U.S. Census Bureau county estimates from July of the previous year.

³ Includes both regular and extended FIP.

Data sources: Unemployment: Bureau of Labor Statistics, Local Area Unemployment Statistics; Public Assistance: Michigan Department of Human Services.

 Prepared by: Michigan League for Human Services	Unemployment (data not seasonally adjusted)						Food Assistance Program				
	Unemployment Rate			Number Unemployed			Average Number of Households Per Month			Percent of Population Receiving Assistance ²	
	Qtr 1 2009	Qtr 1 2010	+/- points	Qtr 1 2009	Qtr 1 2010	% change	Qtr 1 2009	Qtr 1 2010	% change	Qtr 1 2009	Qtr 1 2010
Manistee	13.7	16.1	2.4	1,544	1,788	15.8	1,742	2,085	19.7	14.5%	17.4%
Marquette	10.6	11.9	1.3	3,866	4,289	11.0	3,772	5,181	37.3	10.9%	14.1%
Mason	14.7	16.9	2.2	2,085	2,358	13.1	2,087	2,567	23.0	15.9%	19.3%
Mecosta	13.1	15.6	2.5	2,628	3,050	16.0	4,656	5,519	18.5	20.5%	23.7%
Menominee	11.0	12.8	1.9	1,455	1,688	16.0	1,447	1,767	22.1	12.4%	15.3%
Midland	8.9	11.2	2.3	3,818	4,786	25.3	4,328	5,309	22.7	10.8%	13.3%
Missaukee	16.3	19.6	3.3	1,050	1,235	17.7	875	1,144	30.7	13.6%	17.9%
Monroe	13.7	15.6	1.9	10,327	11,254	9.0	7,014	8,792	25.3	10.0%	12.6%
Montcalm	15.9	19.2	3.3	4,221	5,021	19.0	4,431	5,543	25.1	16.1%	20.0%
Montmorency	21.8	25.7	3.9	875	1,003	14.6	866	1,035	19.5	17.0%	20.4%
Muskegon	14.0	16.5	2.5	12,287	14,052	14.4	18,267	22,314	22.2	21.1%	25.7%
Newaygo	13.8	15.8	2.0	3,106	3,495	12.5	3,480	4,511	29.6	16.6%	21.6%
Oakland	11.4	13.7	2.3	67,733	82,016	21.1	39,619	55,892	41.1	6.7%	9.4%
Oceana	18.3	21.4	3.1	2,463	2,844	15.5	2,159	2,563	18.7	18.9%	22.3%
Ogemaw	14.3	16.9	2.6	1,350	1,597	18.3	2,270	2,589	14.1	21.6%	25.0%
Ontonagon	16.2	18.4	2.2	522	576	10.3	471	550	16.8	12.0%	15.7%
Osceola	15.3	18.1	2.8	1,470	1,700	15.6	1,777	2,165	21.8	17.2%	21.8%
Oscoda	22.6	26.2	3.6	856	931	8.7	880	1,013	15.0	19.2%	22.6%
Otsego	14.5	17.5	3.0	1,730	2,045	18.2	1,893	2,211	16.8	17.0%	20.2%
Ottawa	12.0	13.9	1.9	15,716	17,744	12.9	8,081	12,614	56.1	7.3%	10.4%
Presque Isle	23.3	26.1	2.8	1,370	1,517	10.8	788	923	17.1	11.3%	13.7%
Roscommon	15.5	19.1	3.5	1,530	1,875	22.5	2,523	2,945	16.7	20.2%	23.9%
Saginaw	12.1	14.0	2.0	11,368	13,192	16.0	18,203	22,235	22.2	18.8%	22.6%
Saint Clair	18.2	18.3	0.2	15,209	15,024	-1.2	11,534	13,945	20.9	14.3%	17.5%
Saint Joseph	14.3	15.0	0.7	4,199	4,088	-2.7	4,361	5,354	22.8	16.0%	19.8%
Sanilac	18.4	20.1	1.7	3,886	4,019	3.4	3,335	3,891	16.7	17.5%	20.5%
Schoolcraft	17.1	18.5	1.4	663	714	7.7	615	664	7.9	16.1%	16.9%
Shiawassee	15.1	16.4	1.3	5,385	5,652	5.0	4,735	5,743	21.3	14.7%	17.9%
Tuscola	16.1	18.1	2.0	4,533	4,933	8.8	3,351	4,131	23.3	14.1%	17.6%
Van Buren	12.9	16.2	3.2	5,279	6,505	23.2	5,533	7,013	26.8	15.7%	19.9%
Washtenaw	7.4	9.3	1.8	13,713	16,818	22.6	14,877	19,777	32.9	8.0%	10.4%
Wayne	14.9	16.3	1.4	129,140	139,991	8.4	190,815	237,550	24.5	20.5%	25.4%
Wexford	17.7	19.5	1.8	2,574	2,729	6.0	3,086	3,549	15.0	21.8%	24.5%

FACT

As of April 2010, Michigan led the nation in unemployment rate for 49 consecutive months. However, in May 2010, Nevada had a higher rate than Michigan.

¹In some cases the Michigan number is slightly different from the county total.

² Population figures based on U.S. Census Bureau county estimates from July of the previous year.

Data sources: Unemployment: Bureau of Labor Statistics, Local Area Unemployment Statistics; Public Assistance: Michigan Department of Human Services.

Family Independence Program (Cash Assistance)				Child Day Care				Medicaid					
Average Number of Families Receiving Cash Assistance Per Month ³			Percent of Population Receiving Assistance ²		Average Number of Children Receiving Care Per Month		Average Payment Per Child		Average Number of Persons Eligible for Medicaid ONLY (Excludes FIP & SSI Recipients)			Percent of Population Eligible for Medicaid (Includes FIP & SSI Recipients) ²	
Qtr 1 2009	Qtr 1 2010	% change	Qtr 1 2009	Qtr 1 2010	Qtr 1 2009	Qtr 1 2010	Qtr 1 2009	Qtr 1 2010	Qtr 1 2009	Qtr 1 2010	% change	Qtr 1 2009	Qtr 1 2010
147	176	19.5	1.5%	1.9%	110	71	\$186	\$223	3,231	3,407	5.4	17.1%	18.4%
189	200	6.2	0.6%	0.7%	314	246	\$181	\$196	7,442	8,060	8.3	13.6%	14.7%
148	153	3.6	1.3%	1.3%	329	285	\$217	\$236	4,651	4,948	6.4	19.7%	21.1%
179	175	-2.1	1.1%	1.0%	239	163	\$210	\$238	6,887	6,961	1.1	20.0%	20.3%
72	75	4.2	0.7%	0.8%	134	101	\$179	\$187	3,320	3,631	9.4	16.0%	17.7%
244	310	26.9	0.7%	0.9%	470	336	\$247	\$252	9,449	10,110	7.0	13.8%	15.0%
45	65	43.7	0.7%	1.1%	107	63	\$225	\$250	2,173	2,525	16.2	16.5%	19.7%
689	811	17.6	1.1%	1.3%	692	543	\$313	\$261	14,933	16,736	12.1	12.3%	13.8%
244	217	-11.1	1.0%	0.9%	360	233	\$234	\$239	10,001	11,173	11.7	19.3%	21.3%
39	44	12.8	1.0%	1.1%	47	30	\$192	\$212	1,783	1,806	1.3	21.2%	22.1%
2,981	3,383	13.5	4.7%	5.3%	2,685	2,149	\$250	\$252	26,325	29,002	10.2	22.8%	25.2%
259	327	26.4	1.3%	1.7%	269	213	\$239	\$278	8,144	9,221	13.2	20.4%	23.3%
3,582	4,385	22.4	0.8%	1.0%	4,614	3,182	\$342	\$319	86,345	102,888	19.2	9.3%	11.0%
261	311	19.4	2.8%	3.4%	187	161	\$237	\$247	5,381	5,653	5.0	24.4%	26.2%
130	182	39.7	1.6%	2.2%	266	161	\$216	\$236	4,217	4,334	2.8	24.7%	26.1%
22	29	32.3	1.0%	1.5%	26	20	\$206	\$177	969	983	1.5	17.8%	18.7%
107	115	7.8	1.2%	1.3%	132	120	\$213	\$230	3,626	4,291	18.3	19.8%	23.3%
42	42	0.0	1.2%	1.2%	46	33	\$193	\$173	1,621	1,690	4.3	22.3%	23.6%
110	128	16.4	1.2%	1.4%	285	237	\$258	\$246	4,339	4,619	6.5	21.1%	22.9%
490	553	13.0	0.4%	0.5%	1,010	810	\$268	\$269	23,122	27,395	18.5	10.1%	11.9%
39	44	11.0	0.6%	0.6%	45	27	\$193	\$185	1,644	1,824	10.9	14.8%	16.5%
147	183	24.8	1.3%	1.8%	200	129	\$234	\$193	4,489	4,512	0.5	22.2%	23.1%
2,606	2,665	2.2	3.5%	3.6%	3,542	2,710	\$268	\$252	28,593	31,208	9.1	21.4%	23.1%
929	1,055	13.6	1.5%	1.7%	1,130	776	\$271	\$256	22,720	25,318	11.4	16.5%	18.5%
424	429	1.1	1.7%	1.8%	416	369	\$257	\$293	11,195	12,397	10.7	21.6%	23.9%
195	217	10.9	1.2%	1.3%	313	226	\$239	\$222	7,487	7,985	6.7	20.5%	22.4%
44	42	-3.8	1.4%	1.4%	32	33	\$206	\$172	1,355	1,298	-4.2	21.0%	20.4%
385	437	13.5	1.4%	1.6%	494	362	\$228	\$235	10,283	11,299	9.9	17.9%	19.8%
265	290	9.4	1.2%	1.3%	325	264	\$216	\$244	8,525	9,606	12.7	18.3%	20.7%
484	542	12.0	1.5%	1.7%	485	350	\$249	\$239	13,084	14,641	11.9	20.7%	23.0%
1,131	1,275	12.8	0.8%	1.0%	1,966	1,418	\$339	\$301	25,654	28,800	12.3	9.5%	10.6%
30,284	31,610	4.4	4.4%	4.6%	30,176	18,583	\$310	\$303	300,976	328,505	9.1	23.6%	25.6%
191	214	11.8	1.4%	1.6%	330	249	\$226	\$246	6,726	6,606	-1.8	25.6%	25.8%

FACT

The Recovery Act increased the federal match to states for Medicaid spending. If Congress does not extend that increase, Michigan stands to lose \$514 million, which further jeopardizes safety net programs.

¹ In some cases the Michigan number is slightly different from the county total.

² Population figures based on U.S. Census Bureau county estimates from July of the previous year.

³ Includes both regular and extended FIP.

Data sources: Unemployment: Bureau of Labor Statistics, Local Area Unemployment Statistics; Public Assistance: Michigan Department of Human Services.

Employment Trends by Selected Industries in Michigan
(data not seasonally adjusted, rounded to the nearest hundred)

Industry	Avg 2009 Qtr 1	Avg 2010 Qtr 1	% Change	Industry	Avg 2009 Qtr 1	Avg 2010 Qtr 1	% Change
TOTAL NONFARM	3,870,900	3,764,400	-2.8	Wholesale Electronic Markets and Agents and Brokers	23,400	22,800	-2.6
TOTAL PRIVATE	3,210,100	3,115,300	-3.0	•Retail Trade	445,800	438,000	-1.7
GOODS PRODUCING	604,100	556,700	-7.8	Motor Vehicle and Parts Dealers	50,800	47,800	-5.9
SERVICE-PROVIDING	3,266,800	3,207,700	-1.8	Building Material and Garden Equip. and Supplies Dealers	37,300	37,000	-0.8
Natural Resources and Mining	6,600	6,700	1.5	Food and Beverage Stores	75,200	74,700	-0.7
Construction	116,800	98,300	-15.8	Health and Personal Care	32,400	31,000	-4.3
Construction of Buildings	26,400	22,000	-16.7	Gasoline Stations	22,900	22,000	-3.9
Heavy and Civil Engineering	11,700	10,300	-12.0	Clothing and Clothing Accessories	36,400	35,100	-3.6
Specialty Trade Contractors	78,800	66,100	-16.1	Sporting Goods, Hobby, Book, and Music Stores	20,800	19,500	-6.3
Manufacturing	480,600	451,700	-6.0	General Merchandise Stores	108,500	107,900	-0.6
•Durable Goods	358,100	333,900	-6.8	Miscellaneous Store Retail	22,400	22,100	-1.3
Nonmetallic Mineral Products	10,900	10,100	-7.3	•Transportation & Warehousing & Utilities	113,600	106,500	-6.3
Primary Metal Manufacturing	19,000	15,700	-17.4	Air Transportation	13,100	12,100	-7.6
Fabricated Metal Product	63,100	57,900	-8.2	Rail Transportation	4,300	4,300	0.0
Machinery Manufacturing	29,700	26,300	-11.4	Truck Transportation	33,900	32,000	-5.6
Computer and Electronic Products	19,500	16,900	-13.3	Warehousing and Storage	11,900	11,500	-3.4
Motor Vehicle Manufacturing	34,400	38,400	11.6	Information	57,400	51,900	-9.6
Motor Vehicle Parts Manufacturing	84,100	85,100	1.2	Publishing Industries	18,000	15,700	-12.8
Furniture and Related Products	21,500	17,800	-17.2	Telecommunications	22,700	20,400	-10.1
•Non-Durable Goods	122,500	117,800	-3.8	Financial Activities	191,500	183,100	-4.4
Food Manufacturing	31,900	32,200	0.9	Finance and Insurance	143,900	137,100	-4.7
Printing and Related Support Activities	15,200	13,800	-9.2	Real Estate	33,300	32,900	-1.2
Chemical Manufacturing	26,300	24,700	-6.1	Professional & Business Services	508,200	500,800	-1.5
Plastics and Rubber Products	27,400	25,700	-6.2	Legal Services	27,400	27,000	-1.5
Trade Transportation & Utilities	715,800	691,400	-3.4	Accounting, Tax Preparation, Bookkeeping & Payroll Services	34,100	32,000	-6.2
•Wholesale Trade	156,500	146,900	-6.1	Architectural Engineering	56,300	54,100	-3.9
Merchant Wholesalers Durable Goods	86,700	79,400	-8.4				
Merchant Wholesalers Nondurable Goods	446,300	44,700	-3.5				

Note: Industry details and subtotals may not sum to totals due to rounding.

Source: Department of Labor and Economic Growth/Office of Labor Market Information, Current Employment Statistics Section - (800) 225-3732

Employment Trends by Selected Industries in Michigan
(data not seasonally adjusted, rounded to the nearest hundred)

Industry	Avg 2009 Qtr 1	Avg 2010 Qtr 1	% Change	Industry	Avg 2009 Qtr 1	Avg 2010 Qtr 1	% Change
Computer Systems Design	37,600	36,200	-3.7	Government	660,800	649,100	-1.8
Management, Scientific and Technical Consulting Services	19,500	18,600	-4.6	• Federal Government	53,000	53,800	1.5
Scientific Research and Development Services	19,200	17,500	-8.9	U.S. Postal Service	25,300	23,500	-7.1
Advertising and Related	13,500	12,500	-7.4	• State Government	183,600	182,600	-0.5
Management of Companies	53,000	49,700	-6.2	State Government Educational Services	112,900	113,600	0.6
Administrative & Support Services	226,800	231,100	1.9	State Government Hospital Services	16,700	16,800	0.6
Employment Services	119,700	127,700	6.7	• Local Government	424,200	412,700	-2.7
Educational and Health Services	608,100	620,700	2.1	Local Government Educational Services	245,600	238,200	-3.0
• Educational Services (see also Government)	81,900	89,200	8.9	Local Government Hospitals	13,400	13,400	0.0
• Health Care & Social Assistance	526,200	531,500	1.0	Local Government Elementary and Secondary Schools	219,900	211,300	-3.9
Ambulatory Health Care Services	178,200	180,600	1.3	Local Government Junior Colleges	24,900	26,200	5.2
Offices of Physicians	68,300	69,300	1.5				
Outpatient Care Centers	16,200	16,000	-1.2				
Home Health Care Service	31,300	32,900	5.1				
Hospitals	191,200	189,700	-0.8				
Nursing and Residential Care	96,900	96,900	0.0				
—Nursing Care Facilities	42,700	43,100	0.9				
Social Assistance	59,900	64,200	7.2				
—Individual and Family Services	27,600	27,700	0.4				
Leisure and Hospitality	357,400	347,900	-2.7				
Performing Arts Spectator Activities	8,600	7,300	-15.1				
Amusement, Gambling & Recreation	37,000	34,100	-7.8				
Accommodation	29,400	28,900	-1.7				
Food Services and Drinking	278,700	275,500	-1.1				
Other Services	167,600	162,900	-2.8				
Repair and Maintenance	34,700	33,200	-4.3				
Personal and Laundry Services	36,900	35,500	-3.8				
Religious Grantmaking Civic Professional	96,000	94,200	-1.9				

VISIT OUR WEBSITE FOR MORE INFORMATION!

The "Work and Wages" section of the Michigan League for Human Services website has information on Workforce Development, Work Supports, Unemployment, and Self-Sufficiency. It also includes back issues of the Economic Security Bulletin. Go to www.MiLHS.org and click the "Work and Wages" tab at the left.

Note: Industry details and subtotals may not sum to totals due to rounding.

Source: Department of Labor and Economic Growth/Office of Labor Market Information, Current Employment Statistics Section - (800) 225-3732



Michigan League for Human Services

1223 Turner Street, Suite G-1
 Lansing, MI 48906
 (517) 487-5436 — Fax (517) 371-4546
 Web site: www.milhs.org

A United Way Agency

Percentage Change in Michigan Counties With Largest Increases
 First Quarter 2009 — First Quarter 2010

Percentage Point Change in Unemployment Rate	Percent Change in Food Assistance Households	Percent Change in FIP Cash Assistance Families
Baraga 5.0	Ottawa 56.1	Leelanau 87.9
Alcona 4.7	Leelanau 46.3	Iron 61.7
Luce 4.0	Oakland 41.1	Lake 45.5
Montmorency 3.9	Livingston 38.3	Missaukee 43.7
Benzie 3.9	Isabella 38.1	Ogemaw 39.7
Antrim 3.7	Marquette 37.3	Ionia 35.8
Mackinac 3.7	Charlevoix 36.8	Branch 33.4
Emmet 3.7	Kalamazoo 36.5	Ontonagon 32.3
Oscoda 3.6	Macomb 36.2	Mackinac 31.6
Iosco 3.6	Ingham 35.5	Kalamazoo 30.8

Note: Counties in bold have population of 100,000 or more.

Sources: Unemployment: Bureau of Labor Statistics, Local Area Unemployment Statistics; Public Assistance: Michigan Department of Human Services