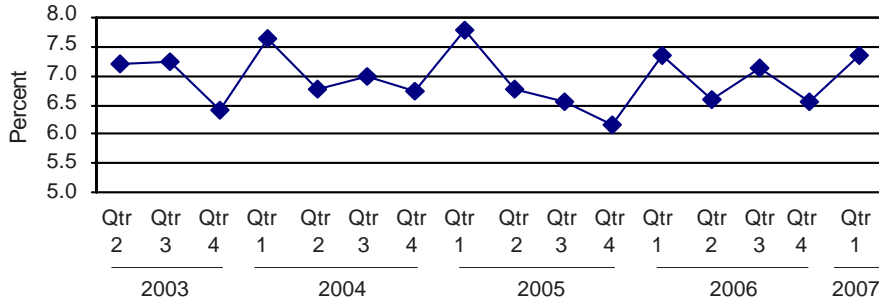


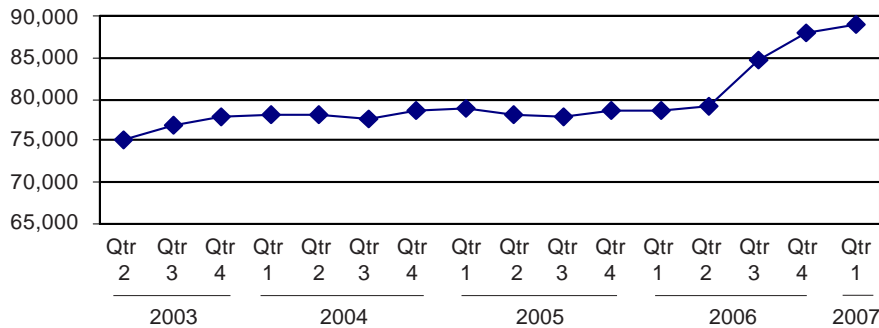


Michigan's Unemployment Rate  
Over the Past Four Years  
(not seasonally adjusted)



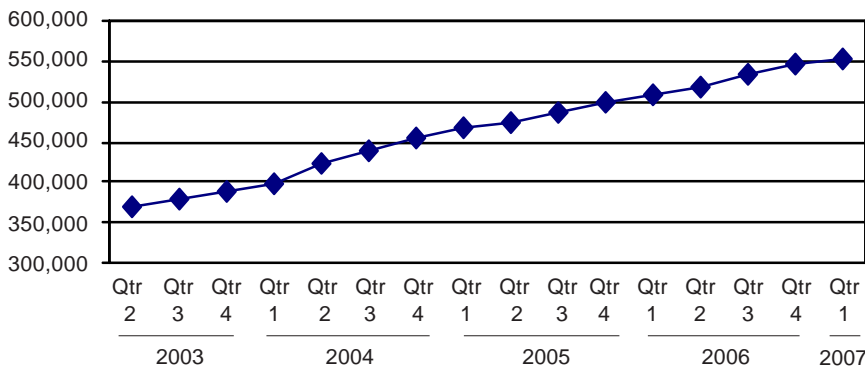
Source: Bureau of Labor Statistics

Family Independence Program Cases in Michigan  
Over the Past Four Years



Source: Michigan Department of Human Services

Food Assistance Households Over the Past Four Years



Source: Michigan Department of Human Services

## Unemployment and Assistance Caseloads Remain High

### Unemployment


During the first quarter of 2007, Michigan had an unemployment rate of 7.4, equal to the same period in 2006 but lower than that in 2005 and 2004. Individual county rates ranged from a low of 4.7 in Washtenaw (a county with a large educated population and many jobs in the academic and manufacturing sectors) to 21.2 percent in Mackinac (a county largely dependent on seasonal tourism). Michigan's unemployment rate is currently higher than any other state in the nation.

### Public Assistance

At just under 90,000 families, the FIP caseload during the first quarter of 2007 was considerably higher than at any other time during this decade. Some of the increase may be due to policy changes enacted during the past year, but it is likely that the record number of cases also reflects the continued difficulty that many Michigan workers have in finding jobs that pay enough to meet their needs. Likewise, Michigan's Food Assistance caseload continues to rise, as it has consistently for several years; it has more than doubled since 2000.

### Sectoral Trends

Michigan lost more than 32,000 manufacturing jobs since the first quarter of 2006, and nearly 19,000 in motor vehicle parts manufacturing. The state also lost more than 9,000 construction and nearly 7,000 retail jobs. While there were thousands of jobs added in the "Health Care and Social Assistance" and "Leisure and Hospitality" sectors, unfortunately such jobs tend to pay low wages and, in the case of the latter, are particularly susceptible to changes in the economy.

 Prepared by: Michigan League for Human Services	Unemployment (data not seasonally adjusted)						Food Assistance Program					
	Unemployment Rate			Number Unemployed			Total Number of Applications			Average Number of Households Receiving Food Assistance Per Month		
	Qtr 1 2006	Qtr 1 2007	% change	Qtr 1 2006	Qtr 1 2007	% change	Qtr 1 2006	Qtr 1 2007	% change	Qtr 1 2006	Qtr 1 2007	% change
<b>Michigan<sup>1</sup></b>	<b>7.4</b>	<b>7.4</b>	<b>0.0</b>	<b>370,277</b>	<b>369,898</b>	<b>-0.1</b>	<b>141,242</b>	<b>146,442</b>	<b>3.7</b>	<b>509,019</b>	<b>553,185</b>	<b>8.7</b>
Alcona	13.0	12.6	-3.6	565	537	-5.0	117	107	-8.5	538	586	8.9
Alger	9.3	9.4	1.1	415	421	1.5	72	83	15.3	302	350	16.1
Allegan	6.9	7.0	1.4	3,866	3,976	2.8	1,120	1,288	15.0	3,790	4,082	7.7
Alpena	9.3	9.8	5.4	1,400	1,456	4.0	570	632	10.9	2,113	2,255	6.7
Antrim	9.2	9.3	0.4	1,072	1,092	1.8	278	335	20.5	874	989	13.1
Arenac	12.5	12.2	-2.7	973	924	-5.0	209	233	11.5	1,130	1,202	6.4
Baraga	12.6	13.0	3.4	537	560	4.3	128	149	16.4	429	449	4.7
Barry	5.8	6.0	4.0	1,800	1,873	4.0	651	650	-0.2	2,197	2,344	6.7
Bay	7.8	7.7	-2.1	4,359	4,193	-3.8	1,311	1,367	4.3	6,367	6,880	8.1
Benzie	9.7	10.3	5.5	879	929	5.7	276	280	1.4	572	724	26.6
Berrien	7.4	7.6	1.8	5,833	5,885	0.9	2,797	2,630	-6.0	9,551	10,051	5.2
Branch	7.9	8.0	2.1	1,786	1,786	0.0	672	662	-1.5	2,061	2,335	13.3
Calhoun	7.2	7.3	1.4	5,156	5,147	-0.2	2,740	2,776	1.3	9,689	10,336	6.7
Cass	5.7	5.4	-5.3	1,586	1,505	-5.1	555	588	5.9	2,540	2,706	6.5
Charlevoix	9.6	10.4	8.7	1,347	1,469	9.0	232	235	1.3	757	857	13.3
Cheboygan	15.9	16.5	3.6	1,958	2,031	3.7	361	451	24.9	1,464	1,649	12.6
Chippewa	10.6	10.7	0.9	1,869	1,905	1.9	438	495	13.0	1,639	1,828	11.5
Clare	11.4	11.5	0.9	1,559	1,578	1.2	480	528	10.0	2,568	2,846	10.8
Clinton	5.7	5.9	3.5	2,183	2,262	3.6	450	517	14.9	1,613	1,825	13.1
Crawford	8.5	9.1	6.3	578	609	5.4	265	217	-18.1	844	891	5.6
Delta	8.7	8.8	0.4	1,768	1,777	0.5	521	473	-9.2	2,049	2,177	6.2
Dickinson	6.4	6.4	0.5	923	938	1.6	309	282	-8.7	1,034	1,126	8.9
Eaton	5.8	5.7	-1.7	3,486	3,390	-2.8	1,075	1,193	11.0	3,446	3,848	11.7
Emmet	11.1	11.7	6.0	2,184	2,333	6.8	383	469	22.5	1,262	1,462	15.9
Genesee	8.6	9.0	5.4	18,359	18,906	3.0	8,970	9,830	9.6	33,418	35,912	7.5
Gladwin	11.3	11.5	1.8	1,243	1,251	0.6	329	351	6.7	1,656	1,795	8.4
Gogebic	7.6	7.7	1.8	598	607	1.4	248	259	4.4	1,009	1,135	12.5
Gr. Traverse	7.4	7.7	4.5	3,495	3,678	5.2	1,208	1,301	7.7	3,244	3,767	16.1
Gratiot	9.2	9.6	4.0	1,907	1,954	2.4	523	546	4.4	1,927	2,186	13.4
Hillsdale	8.1	8.7	7.4	1,816	1,943	7.0	542	566	4.4	2,040	2,230	9.3
Houghton	7.8	8.0	2.1	1,416	1,448	2.3	352	355	0.9	1,673	1,782	6.5
Huron	9.4	9.4	0.0	1,600	1,609	0.6	301	240	-20.3	1,583	1,705	7.7
Ingham	6.6	6.4	-2.5	10,159	9,911	-2.4	4,517	4,529	0.3	15,680	16,791	7.1
Ionia	8.5	8.1	-5.1	2,685	2,531	-5.7	779	875	12.3	2,688	2,961	10.2
Iosco	11.1	11.9	6.9	1,223	1,306	6.7	420	404	-3.8	1,852	2,018	9.0
Iron	9.0	8.5	-5.5	540	516	-4.4	128	143	11.7	598	607	1.6
Isabella	5.7	5.5	-2.9	2,146	2,092	-2.5	891	1,196	34.2	2,850	3,691	29.5
Jackson	7.3	7.9	8.7	5,753	6,165	7.2	2,577	2,708	5.1	7,812	8,617	10.3
Kalamazoo	5.2	5.4	3.2	7,016	7,219	2.9	3,591	3,763	4.8	13,124	14,481	10.3
Kalkaska	8.9	9.0	0.7	769	770	0.2	290	326	12.4	1,000	1,124	12.4
Kent	5.8	6.1	4.0	18,822	19,461	3.4	8,436	9,514	12.8	28,411	30,623	7.8
Keweenaw	12.8	13.0	2.1	141	145	2.4	16	15	-6.3	92	89	-4.0
Lake	11.9	11.9	0.6	494	496	0.3	191	210	9.9	1,149	1,152	0.2
Lapeer	9.4	9.4	-0.7	4,266	4,278	0.3	857	897	4.7	2,411	2,859	18.6
Leelanau	6.7	6.7	0.5	763	764	0.2	126	96	-23.8	348	357	2.5

<sup>1</sup>In some cases the Michigan number is slightly different from the county total.

Data sources: Unemployment: Bureau of Labor Statistics, Local Area Unemployment Statistics; Public Assistance: Michigan Department of Human Services.


## Family Independence Program (Cash Assistance)

Total Number of Applications			Average Number of Families Receiving Cash Assistance Per Month			Application Approvals: Unemployment Benefits Exhausted, Layoff or Discharge, Depleted Savings, Non-Exempt Property or Loss of Other Resources			Total Number of Denials		Income Exceeds Standards as Percent of Denials		Percent of Cases Without Earned Income, Out of Total Cases Expected to Work	
Qtr 1 2006	Qtr 1 2007	% change	Qtr 1 2006	Qtr 1 2007	% change	Qtr 1 2006	Qtr 1 2007	% change	Qtr 1 2006	Qtr 1 2007	Qtr 1 2006	Qtr 1 2007	Qtr 1 2006	Qtr 1 2007
<b>44,832</b>	<b>44,938</b>	<b>0.2</b>	<b>78,735</b>	<b>88,958</b>	<b>13.0</b>	<b>1,873</b>	<b>2,866</b>	<b>53.0</b>	<b>19,665</b>	<b>15,727</b>	<b>44.6</b>	<b>58.2</b>	<b>67%</b>	<b>71%</b>
38	28	-26.3	49	53	8.2	0	0	0	14	5	50.0	20.0	39%	53%
27	27	0.0	22	33	46.3	0	6	0	16	14	50.0	78.6	0%	0%
407	449	10.3	402	456	13.3	25	29	16.0	204	172	46.6	64.0	62%	55%
160	154	-3.8	176	206	16.9	18	25	38.9	50	60	62.0	65.0	48%	57%
86	103	19.8	72	82	13.9	3	2	-33.3	45	40	66.7	72.5	55%	24%
81	68	-16.0	102	112	9.1	10	7	-30.0	39	33	48.7	48.5	36%	50%
41	46	12.2	56	54	-3.0	0	1	0	12	15	33.3	46.7	48%	48%
204	200	-2.0	248	260	5.1	17	23	35.3	95	57	52.6	73.7	52%	59%
475	497	4.6	791	860	8.6	35	49	40.0	157	143	48.4	62.2	54%	57%
74	90	21.6	38	68	78.1	6	1	-83.3	47	49	48.9	77.6	62%	54%
954	836	-12.4	1,349	1,537	14.0	10	9	-10.0	445	326	40.9	50.3	66%	64%
282	293	3.9	245	350	42.5	42	49	16.7	134	110	47.0	58.2	69%	71%
962	1,001	4.1	1,573	1,753	11.4	63	85	34.9	463	352	54.6	56.0	67%	69%
198	224	13.1	292	348	18.9	12	16	33.3	95	76	53.7	68.4	66%	64%
78	75	-3.8	54	60	11.0	4	9	125.0	41	25	48.8	48.0	0%	*
143	130	-9.1	118	147	24.3	13	17	30.8	66	61	42.4	62.3	86%	71%
138	176	27.5	151	193	28.0	17	33	94.1	59	57	52.5	73.7	60%	74%
177	202	14.1	302	350	15.9	11	9	-18.2	99	77	45.5	48.1	67%	71%
146	160	9.6	117	144	23.7	8	8	0.0	93	82	46.2	74.4	77%	57%
84	80	-4.8	83	99	19.3	10	15	50.0	41	23	48.8	78.3	69%	62%
146	128	-12.3	139	175	25.8	11	0	-100.0	77	42	39.0	52.4	60%	59%
95	95	0.0	74	70	-4.5	10	3	-70.0	43	37	55.8	59.5	44%	66%
332	420	26.5	362	432	19.1	4	9	125.0	162	193	48.1	56.5	64%	67%
100	127	27.0	69	87	27.2	9	16	77.8	39	44	59.0	72.7	54%	41%
3,441	3,226	-6.2	6,654	7,337	10.3	151	196	29.8	1,475	1,039	39.5	54.7	62%	72%
129	125	-3.1	157	215	36.7	9	14	55.6	60	40	41.7	67.5	69%	65%
65	77	18.5	158	184	16.0	2	10	400.0	15	23	40.0	65.2	76%	71%
282	343	21.6	156	206	32.1	6	50	733.3	169	168	65.7	72.0	66%	75%
220	224	1.8	284	297	4.6	10	21	110.0	117	98	47.0	61.2	59%	61%
207	222	7.2	186	231	24.4	8	31	287.5	103	66	45.6	63.6	59%	58%
67	60	-10.4	97	105	7.5	5	6	20.0	18	11	72.2	72.7	65%	92%
79	80	1.3	111	144	30.0	16	26	62.5	26	20	53.8	70.0	66%	64%
1,447	1,297	-10.4	1,842	2,049	11.2	50	48	-4.0	729	488	44.3	64.3	69%	64%
271	309	14.0	232	292	26.0	4	5	25.0	112	121	51.8	61.2	57%	67%
123	132	7.3	139	175	26.2	4	7	75.0	54	59	61.1	62.7	50%	52%
45	66	46.7	63	75	17.9	4	7	75.0	15	21	53.3	52.4	52%	56%
250	237	-5.2	298	351	17.8	6	3	-50.0	122	108	54.9	60.2	62%	61%
837	834	-0.4	1,031	1,219	18.3	31	109	251.6	440	287	35.2	59.6	66%	70%
1,212	1,249	3.1	1,789	2,044	14.2	56	57	1.8	458	411	41.5	53.5	65%	64%
98	104	6.1	84	101	20.7	9	39	333.3	44	46	50.0	63.0	52%	38%
2,830	2,766	-2.3	4,197	4,669	11.3	97	106	9.3	1,261	1,061	46.1	60.5	50%	65%
4	1	-75.0	4	5	16.7	0	0	0	3	1	33.3	*	0%	0%
74	61	-17.6	145	123	-15.1	9	13	44.4	20	12	30.0	33.3	78%	66%
290	330	13.8	243	324	33.4	5	12	140.0	155	134	47.1	69.4	70%	74%
37	34	-8.1	28	28	1.2	2	1	-50.0	21	14	57.1	78.6	*	*

<sup>1</sup>In some cases the Michigan number is slightly different from the county total.

\*Data is unavailable or cannot be calculated.

Data sources: Unemployment: Bureau of Labor Statistics, Local Area Unemployment Statistics; Public Assistance: Michigan Department of Human Services.

 Prepared by: Michigan League for Human Services	Unemployment (data not seasonally adjusted)						Food Assistance Program					
	Unemployment Rate			Number Unemployed			Total Number of Applications			Average Number of Households Receiving Food Assistance Per Month		
	Qtr 1 2006	Qtr 1 2007	% change	Qtr 1 2006	Qtr 1 2007	% change	Qtr 1 2006	Qtr 1 2007	% change	Qtr 1 2006	Qtr 1 2007	% change
Lenawee	7.9	8.4	5.9	3,967	4,207	6.1	1,170	1,194	2.1	3,508	4,012	14.4
Livingston	5.8	5.7	-1.7	5,390	5,362	-0.5	984	1,065	8.2	2,356	2,834	20.3
Luce	8.7	8.9	1.9	252	259	2.6	82	78	-4.9	368	427	16.0
Mackinac	20.7	21.2	2.7	1,118	1,153	3.2	116	116	0.0	373	390	4.5
Macomb	7.1	7.2	0.9	29,609	30,352	2.5	7,644	8,343	9.1	25,337	29,454	16.2
Manistee	9.8	10.1	3.4	1,158	1,203	3.9	322	337	4.7	1,395	1,523	9.2
Marquette	6.8	7.3	6.8	2,475	2,624	6.0	671	680	1.3	2,737	2,982	9.0
Mason	9.8	9.9	1.0	1,423	1,422	-0.1	414	411	-0.7	1,660	1,765	6.4
Mecosta	8.3	8.4	1.2	1,729	1,752	1.3	665	756	13.7	2,965	3,435	15.8
Menominee	6.7	6.2	-8.4	883	814	-7.8	289	277	-4.2	1,120	1,157	3.3
Midland	6.3	6.1	-4.2	2,694	2,586	-4.0	774	987	27.5	3,473	3,706	6.7
Missaukee	9.2	9.7	4.7	636	666	4.7	187	186	-0.5	687	728	6.0
Monroe	6.6	6.9	4.5	5,257	5,384	2.4	1,467	1,466	-0.1	4,771	5,335	11.8
Montcalm	12.3	12.8	4.1	3,561	3,578	0.5	756	861	13.9	3,175	3,599	13.4
Montmorency	14.9	15.5	4.0	639	667	4.4	123	152	23.6	686	734	6.9
Muskegon	7.2	7.4	2.8	6,455	6,547	1.4	3,538	3,741	5.7	13,816	14,898	7.8
Newaygo	8.1	8.5	5.8	1,908	2,025	6.1	637	655	2.8	2,626	2,829	7.7
Oakland	6.0	5.8	-3.3	37,494	36,456	-2.8	10,388	10,368	-0.2	27,400	31,484	14.9
Oceana	11.4	10.8	-5.3	1,593	1,477	-7.3	402	388	-3.5	1,708	1,778	4.1
Ogemaw	10.3	10.5	1.9	999	1,014	1.5	326	296	-9.2	1,875	1,939	3.4
Ontonagon	8.8	9.0	2.7	311	320	3.0	78	78	0.0	379	408	7.6
Osceola	8.1	8.6	5.7	831	875	5.3	264	289	9.5	1,398	1,484	6.2
Oscoda	12.3	12.1	-1.6	485	483	-0.3	110	157	42.7	626	716	14.4
Otsego	8.5	10.0	17.6	1,077	1,249	16.0	333	369	10.8	1,246	1,411	13.2
Ottawa	5.6	5.9	4.7	7,676	8,082	5.3	1,882	1,972	4.8	5,366	5,813	8.3
Presque Isle	17.3	17.6	1.9	1,047	1,064	1.7	145	137	-5.5	564	623	10.5
Roscommon	11.0	11.2	1.8	1,199	1,218	1.5	369	376	1.9	1,909	2,049	7.4
Saginaw	8.2	7.8	-5.7	8,136	7,592	-6.7	3,684	3,897	5.8	15,201	15,708	3.3
Saint Clair	8.8	8.9	0.8	7,391	7,520	1.8	2,445	2,542	4.0	7,865	8,991	14.3
Saint Joseph	6.8	6.6	-3.4	2,133	2,045	-4.1	991	920	-7.2	3,256	3,331	2.3
Sanilac	10.0	10.3	2.7	2,257	2,341	3.7	504	541	7.3	2,410	2,677	11.1
Schoolcraft	13.9	13.8	-0.5	568	560	-1.3	89	86	-3.4	523	567	8.5
Shiawassee	8.9	9.1	2.3	3,295	3,377	2.5	957	916	-4.3	3,376	3,721	10.2
Tuscola	9.7	9.6	-1.0	2,856	2,787	-2.4	631	619	-1.9	2,443	2,691	10.2
Van Buren	8.0	8.1	2.1	3,331	3,386	1.7	1,393	1,543	10.8	4,715	4,816	2.1
Washtenaw	4.6	4.7	2.2	8,934	8,996	0.7	3,063	3,659	19.5	9,590	11,381	18.7
Wayne	8.4	8.0	-4.7	74,961	71,471	-4.7	41,511	40,597	-2.2	160,568	169,653	5.7
Wexford	8.4	9.1	7.5	1,259	1,358	7.8	536	623	16.2	2,153	2,456	14.1

## FACT

According to the Michigan League for Human Services' *Economic Self-Sufficiency in Michigan* (June 2007), a single parent with two children needs to earn \$19.35 per hour working full time in order to meet her family's needs without relying on government or private assistance.

<sup>1</sup>In some cases the Michigan number is slightly different from the county total.

Data sources: Unemployment: Bureau of Labor Statistics, Local Area Unemployment Statistics; Public Assistance: Michigan Department of Human Services.

Family Independence Program (Cash Assistance)

Total Number of Applications			Average Number of Families Receiving Cash Assistance Per Month			Application Approvals: Unemployment Benefits Exhausted, Layoff or Discharge, Depleted Savings, Non-Exempt Property or Loss of Other Resources			Total Number of Denials		Income Exceeds Standards as Percent of Denials		Percent of Cases Without Earned Income, Out of Total Cases Expected to Work	
Qtr 1 2006	Qtr 1 2007	% change	Qtr 1 2006	Qtr 1 2007	% change	Qtr 1 2006	Qtr 1 2007	% change	Qtr 1 2006	Qtr 1 2007	Qtr 1 2006	Qtr 1 2007	Qtr 1 2006	Qtr 1 2007
389	436	12.1	379	474	24.9	11	16	45.5	190	161	49.5	64.0	36%	74%
338	369	9.2	138	230	67.1	10	16	60.0	226	200	54.9	67.5	75%	69%
26	37	42.3	24	40	68.1	0	0	0	14	11	57.1	45.5	49%	51%
34	51	50.0	32	34	8.4	0	1	0	19	19	68.4	89.5	0%	0%
2,147	2,425	12.9	2,617	3,563	36.2	89	211	137.1	1,042	952	48.8	62.7	63%	71%
113	122	8.0	141	163	15.9	13	23	76.9	42	49	54.8	63.3	71%	69%
165	203	23.0	253	273	7.6	12	6	-50.0	43	67	32.6	65.7	48%	66%
157	140	-10.8	225	226	0.6	20	25	25.0	55	41	54.5	78.0	51%	54%
188	186	-1.1	237	236	-0.1	7	13	85.7	80	58	52.5	65.5	59%	59%
87	79	-9.2	90	94	3.7	6	8	33.3	34	23	38.2	56.5	43%	69%
248	280	12.9	354	397	12.1	25	28	12.0	121	120	49.6	60.8	55%	59%
70	55	-21.4	65	61	-6.2	3	5	66.7	30	26	43.3	80.8	*	*
533	512	-3.9	642	713	11.1	16	35	118.8	260	158	51.2	61.4	61%	66%
298	324	8.7	313	376	20.0	13	27	107.7	147	134	53.1	67.9	77%	73%
31	38	22.6	54	52	-2.5	5	8	60.0	13	15	61.5	86.7	42%	83%
1,296	1,397	7.8	2,716	2,879	6.0	77	100	29.9	399	340	50.6	53.2	70%	71%
217	216	-0.5	281	315	11.8	3	1	-66.7	57	45	36.8	57.8	72%	75%
2,773	3,120	12.5	3,260	4,034	23.7	55	205	272.7	1,543	1,490	48.7	59.1	68%	70%
170	163	-4.1	336	321	-4.5	38	44	15.8	68	54	55.9	66.7	63%	66%
103	123	19.4	173	202	16.5	30	36	20.0	33	22	63.6	63.6	56%	59%
23	28	21.7	40	30	-24.2	5	2	-60.0	8	6	75.0	50.0	41%	49%
113	91	-19.5	152	155	1.5	2	11	450.0	53	34	66.0	67.6	*	*
35	67	91.4	53	70	32.1	8	0	-100.0	8	11	37.5	90.9	76%	74%
90	115	27.8	97	138	42.8	0	2	0	36	36	61.1	72.2	46%	57%
499	491	-1.6	482	529	9.8	20	23	15.0	216	155	47.7	59.4	66%	63%
47	43	-8.5	43	51	18.8	1	3	200.0	18	16	55.6	50.0	67%	40%
140	126	-10.0	171	179	4.3	6	5	-16.7	50	38	52.0	76.3	43%	73%
1,333	1,370	2.8	2,996	2,956	-1.4	80	100	25.0	591	459	41.8	58.4	50%	59%
840	838	-0.2	974	1,232	26.5	67	92	37.3	342	255	40.1	58.8	61%	67%
337	366	8.6	360	452	25.5	20	57	185.0	178	149	44.9	53.7	63%	61%
151	149	-1.3	211	232	10.0	31	34	9.7	74	49	43.2	53.1	61%	84%
44	31	-29.5	58	57	-1.2	0	1	0	16	9	50.0	33.3	69%	92%
328	314	-4.3	320	403	25.9	5	21	320.0	163	119	53.4	66.4	59%	59%
230	223	-3.0	252	313	24.2	17	18	5.9	88	59	39.8	66.1	62%	63%
442	419	-5.2	630	599	-4.9	28	54	92.9	192	171	52.1	55.6	72%	74%
804	885	10.1	1,247	1,470	17.9	11	30	172.7	369	318	35.5	57.9	65%	63%
12,367	11,492	-7.1	33,281	37,025	11.2	299	404	35.1	4,820	3,463	38.3	50.8	70%	74%
190	228	20.0	255	284	11.4	18	19	5.6	74	74	56.8	67.6	69%	71%

FACT

A single parent with two children who works full-time at minimum wage cannot rise above the poverty level based on earnings alone.

<sup>1</sup>In some cases the Michigan number is slightly different from the county total.

\*Data is unavailable or cannot be calculated.

Data sources: Unemployment: Bureau of Labor Statistics, Local Area Unemployment Statistics; Public Assistance: Michigan Department of Human Services.

Employment Trends by Selected Industries in Michigan  
(data not seasonally adjusted, rounded to the nearest hundred)

Industry	Avg 2006 Qtr 1	Avg 2007 Qtr 1	% Change	Industry	Avg 2006 Qtr 1	Avg 2007 Qtr 1	% Change
<b>TOTAL NONFARM</b>	<b>4,283,367</b>	<b>4,234,233</b>	<b>-1.1</b>	<b>Trade Transportation &amp; Utilities</b>	<b>780,300</b>	<b>771,200</b>	<b>-1.2</b>
<b>TOTAL PRIVATE</b>	<b>3,597,567</b>	<b>3,554,667</b>	<b>-1.2</b>	•Wholesale Trade	<b>168,333</b>	<b>168,067</b>	<b>-0.2</b>
<b>GOODS PRODUCING</b>	<b>824,967</b>	<b>783,067</b>	<b>-5.1</b>	Merchant Wholesalers			
<b>SERVICE-PROVIDING</b>	<b>3,458,400</b>	<b>3,451,167</b>	<b>-0.2</b>	Durable Goods	96,633	96,933	0.3
<b>Natural Resources and Mining</b>	<b>7,467</b>	<b>7,400</b>	<b>-0.9</b>	Merchant Wholesalers			
Mining	5,900	5,800	-1.7	Nondurable Goods	48,000	47,133	-1.8
<b>Construction</b>	<b>160,967</b>	<b>151,633</b>	<b>-5.8</b>	Wholesale Electronic Markets			
Construction of Buildings	40,667	38,633	-5.0	and Agents and Brokers	23,700	24,000	1.3
Heavy and Civil Engineering	13,467	13,367	-0.7	•Retail Trade	<b>485,533</b>	<b>478,700</b>	<b>-1.4</b>
Specialty Trade Contractors	106,833	99,633	-6.7	Motor Vehicle and Parts Dealers	57,933	56,333	-2.8
<b>Manufacturing</b>	<b>656,533</b>	<b>624,033</b>	<b>-5.0</b>	Furniture and Home Furnishings	17,367	17,067	-1.7
•Durable Goods	<b>511,167</b>	<b>481,300</b>	<b>-5.8</b>	Electronics and Appliance	17,700	17,633	-0.4
Nonmetallic Mineral Products	14,200	14,000	-1.4	Building Material and Garden			
Primary Metal Manufacturing	26,533	25,233	-4.9	Equip. and Supplies Dealers	42,300	40,900	-3.3
Fabricated Metal Product	83,567	83,067	-0.6	Food and Beverage Stores	79,767	79,700	-0.1
Machinery Manufacturing	75,100	72,667	-3.2	Health and Personal Care	33,300	33,467	0.5
Computer and Electronic Products	20,733	21,200	2.3	Gasoline Stations	25,267	24,800	-1.8
Motor Vehicle Manufacturing	57,867	53,833	-7.0	Clothing and Clothing Accessories	40,067	39,567	-1.2
Motor Vehicle Parts				Sporting Goods, Hobby, Book,			
Manufacturing	153,433	134,567	-12.3	and Music Stores	23,667	22,867	-3.4
Furniture and Related Products	24,900	24,667	-0.9	General Merchandise Stores	109,800	107,667	-1.9
Miscellaneous Manufacturing	17,733	17,733	0.0	Miscellaneous Store Retail	26,700	25,667	-3.9
•Non-Durable Goods	<b>145,367</b>	<b>142,733</b>	<b>-1.8</b>	•Transportation & Warehousing	<b>126,433</b>	<b>124,433</b>	<b>-1.6</b>
Food Manufacturing	31,567	31,667	0.3	Air Transportation	14,600	12,833	-12.1
Paper Manufacturing	14,900	14,800	-0.7	Rail Transportation	4,700	4,500	-4.3
Printing and Related Support				Truck Transportation	37,100	38,067	2.6
Activities	17,567	16,900	-3.8	Warehousing and Storage	15,267	14,333	-6.1
Chemical Manufacturing	29,167	28,233	-3.2	<b>Information</b>	<b>66,533</b>	<b>66,367</b>	<b>-0.3</b>
Plastics and Rubber Products	42,133	41,700	-1.0	Publishing Industries	24,133	23,300	-3.5
				Telecommunications	21,767	21,567	-0.9
				<b>Financial Activities</b>	<b>215,133</b>	<b>213,167</b>	<b>-0.9</b>
				Finance and Insurance	161,667	160,933	-0.5
				Real Estate	36,933	36,567	-1.0

Note: Industry details and subtotals may not sum to totals due to rounding.

Source: Department of Labor and Economic Growth/Office of Labor Market Information, Current Employment Statistics Section - (800) 225-3732

Employment Trends by Selected Industries in Michigan  
(data not seasonally adjusted, rounded to the nearest hundred)

Industry	Avg 2006 Qtr 1	Avg 2007 Qtr 1	% Change	Industry	Avg 2006 Qtr 1	Avg 2007 Qtr 1	% Change
<b>Professional &amp; Business Services</b>	<b>572,600</b>	<b>571,633</b>	<b>-0.2</b>	<b>Other Services</b>	<b>176,067</b>	<b>176,000</b>	<b>0.0</b>
Legal Services	29,000	28,967	-0.1	Repair and Maintenance	40,100	39,267	-2.1
Accounting and Tax Preparation	33,133	32,433	-2.1	Personal and Laundry Services	40,100	39,567	-1.3
Architectural Engineering	67,400	65,367	-3.0	Religious Grantmaking Civic Professional	95,867	97,167	1.4
Computer Systems Design	39,000	38,967	-0.1	<b>Government</b>	<b>685,800</b>	<b>679,567</b>	<b>-0.9</b>
Management, Scientific and Technical Consulting Services	19,167	19,600	2.3	• <b>Federal Government</b>	<b>53,967</b>	<b>53,033</b>	<b>-1.7</b>
Scientific Research and Development Services	23,467	24,567	4.7	U.S. Postal Service	27,233	26,633	-2.2
Advertising and Related	15,633	14,567	-6.8	• <b>State Government</b>	<b>173,933</b>	<b>176,167</b>	<b>1.3</b>
Other Professional Scientific and Technical Services	15,000	15,367	2.4	State Government Educational Services	1 103,433	105,133	1.6
Management of Companies	63,133	61,633	-2.4	State Government Hospital Services	14,700	15,533	5.7
Administrative & Support Services	262,600	263,600	0.4	• <b>Local Government</b>	<b>457,900</b>	<b>450,367</b>	<b>-1.6</b>
<b>Educational and Health Services</b>	<b>580,400</b>	<b>588,367</b>	<b>1.4</b>	Local Government Educational Services	274,967	268,000	-2.5
• <b>Educational Services</b>	<b>77,267</b>	<b>78,600</b>	<b>1.7</b>	Local Government Hospitals	12,900	12,867	-0.3
(see also <b>Government</b> )				Local Government Elementary and Secondary Schools	252,300	245,333	-2.8
• <b>Health Care &amp; Social Assistance</b>	<b>503,133</b>	<b>509,767</b>	<b>1.3</b>	Local Government Junior Colleges	21,933	21,400	-2.4
Ambulatory Health Care Services	169,400	173,800	2.6				
Offices of Physicians	67,967	69,533	2.3				
Offices of Dentists	31,567	31,633	0.2				
Offices of Other Health Professionals	19,733	19,933	1.0				
Outpatient Care Centers	13,900	14,300					
Home Health Care Service	25,900	27,567	6.4				
Hospitals	183,133	183,433	0.2				
Nursing and Residential Care	91,233	92,433	1.3				
—Nursing Care Facilities	42,000	42,833	2.0				
Social Assistance	5 59,367	60,100	1.2				
—Individual and Family Services	25,500	26,000	2.0				
<b>Leisure and Hospitality</b>	<b>381,567</b>	<b>384,867</b>	<b>0.9</b>				
Performing Arts Spectator Activities	8,267	8,033	-2.8				
Amusement, Gambling & Recreation	39,133	39,267	0.3				
Accommodation	32,733	32,900	0.5				
Food Services and Drinking	298,000	300,800	0.9				

**VISIT OUR WEBSITE FOR MORE INFORMATION!**

The "Work and Wages" section of the Michigan League for Human Services website has information on Workforce Development, Work Supports, Unemployment, and Self-Sufficiency. It also includes back issues of the Economic Security Bulletin. Go to <http://www.MiLHS.org> and click the "Work and Wages" tab at the right.

Note: Industry details and subtotals may not sum to totals due to rounding.

Source: Department of Labor and Economic Growth/Office of Labor Market Information, Current Employment Statistics Section - (800) 225-3732



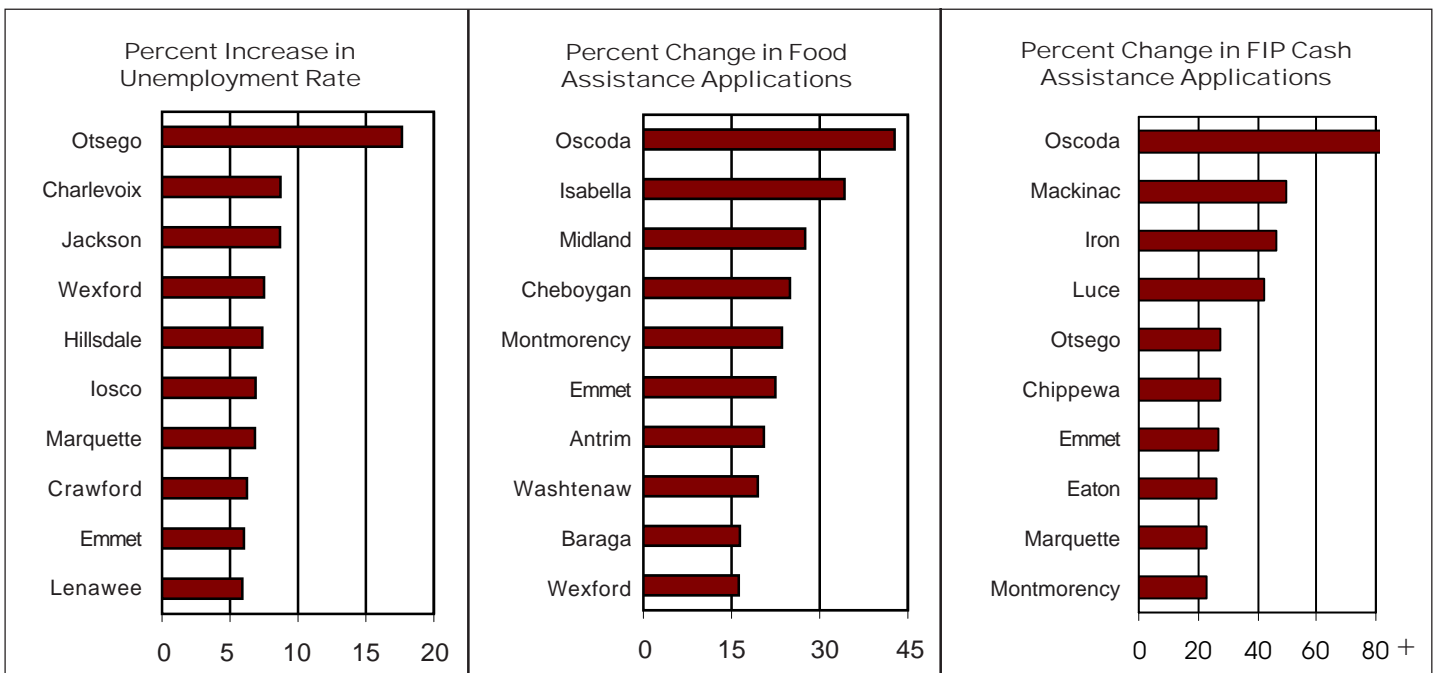
**Michigan League for Human Services**

1115 South Pennsylvania Avenue, Suite 202  
 Lansing, MI 48912-1658  
 (517) 487-5436 — Fax (517) 371-4546  
 Web site: www.milhs.org

*A United Way Agency*

Nonprofit  
 Organization  
 U.S. Postage  
**Paid**  
 Lansing, MI  
 Permit #1421

Percentage Change in Michigan Counties With Largest Increases  
 First Quarter 2006 — First Quarter 2007



Sources: Unemployment: Bureau of Labor Statistics, Local Area Unemployment Statistics; Public Assistance: Michigan Department of Human Services