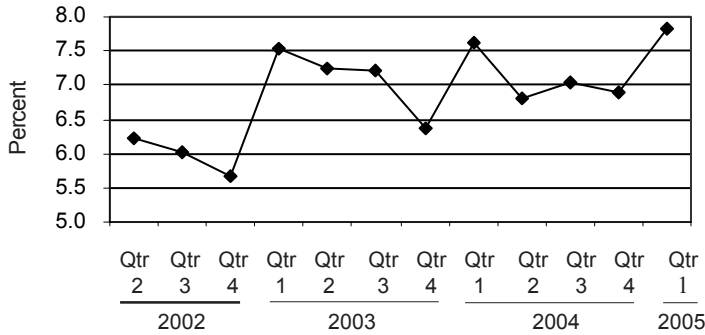


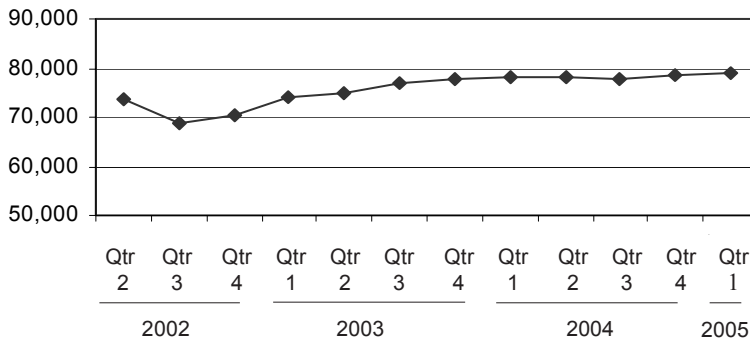


Michigan's Unemployment Rate Over the Past Three Years
(not seasonally adjusted)



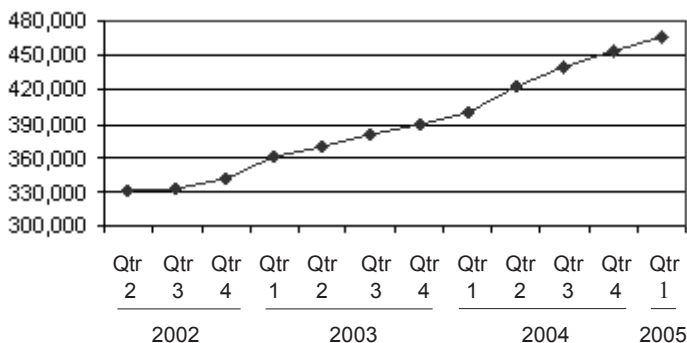
Note: See footnote 1 on page 2
Source: U.S. Department of Labor

FIP Caseload Over the Past Three Years



Source: Michigan Department of Human Services

Food Assistance Households Over the Past Three Years



Source: Michigan Department of Human Services

Unemployment Rate Up From Previous Quarter While Labor Force Drops

Unemployment

The first quarter of 2005 saw a spike of one percentage point in the state unemployment rate over the previous quarter, to 7.8. While such an increase is not unusual between a fourth quarter and the first quarter of the following year, this increase was accompanied by a drop in the labor force (46,363) that was larger than usual for that time period. It is likely that some of the drop can be attributed to "discouraged workers" who have dropped out of the labor force after a long period of unemployment.

Public Assistance

The Family Independence Program (FIP) caseload continued to hover just under 80,000, as it had for the previous four quarters. Food assistance households, on the other hand, continued their steady increase and there are now more than 200,000 cases over four years ago. FIP applications remained about the same as the previous quarter but showed a 6 percent decrease from the same time last year. Food assistance applications rose slightly from the previous quarter but also had a decrease from the same time last year.

Sectoral Trends

During the first quarter of 2005, the largest decrease in jobs from the same time last year was in the motor vehicle manufacturing industry, at 11 percent. Other significant job losses were seen in motor vehicle parts manufacturing, general merchandise retailing and non-government educational services. At the same time, there were increases in certain health care sectors (primarily hospitals and ambulatory services) and in trucking services.

Would you like to receive our *Economic Security Bulletin* by E-mail? Send your request to pruark@mlan.net.

Prepared by: Michigan League for Human Services	Unemployment (data not seasonally adjusted)						Food Assistance Program					
	Unemployment Rate ¹			Number Unemployed ¹			Total Number of Applications			Average Number of Households Receiving Food Assistance Per Month		
	Qtr 1 2004	Qtr 1 2005	% change	Qtr 1 2004	Qtr 1 2005	% change	Qtr 1 2004	Qtr 1 2005	% change	Qtr 1 2004	Qtr 1 2005	% change
Michigan²	7.6	7.8	2.6	384,229	396,381	3.2	146,815	142,220	-3.1	399,297	466,148	16.7
Alcona	13.5	12.9	-4.2	597	538	-9.9	120	101	-15.8	464	497	7.1
Alger	8.5	8.7	2.8	378	386	2.2	88	57	-35.2	279	288	3.0
Allegan	7.6	7.6	0.4	4,428	4,096	-7.5	1,086	1,194	9.9	2,952	3,428	16.1
Alpena	10.3	9.7	-5.8	1,643	1,521	-7.4	552	437	-20.8	1,798	1,974	9.8
Antrim	10.8	9.2	-14.6	1,171	1,110	-5.2	245	285	16.3	635	726	14.3
Arenac	14.4	12.4	-13.7	1,003	961	-4.1	259	189	-27.0	967	1,034	7.0
Baraga	12.5	14.0	12.0	526	571	8.4	132	126	-4.5	345	398	15.5
Barry	5.7	6.4	12.4	1,823	1,921	5.3	589	622	5.6	1,588	1,950	22.8
Bay	9.5	8.5	-11.2	5,161	4,840	-6.2	1,518	1,437	-5.3	5,213	5,933	13.8
Benzie	11.0	11.0	-0.6	931	974	4.7	251	256	2.0	484	523	8.1
Berrien	8.0	8.1	0.8	6,750	6,433	-4.7	2,922	2,931	0.3	7,979	9,039	13.3
Branch	7.3	7.8	7.8	1,771	1,832	3.5	609	661	8.5	1,643	1,821	10.8
Calhoun	7.6	7.0	-8.7	5,169	5,420	4.9	2,833	2,438	-13.9	7,486	8,814	17.7
Cass	5.5	5.6	2.4	1,453	1,563	7.5	715	640	-10.5	2,121	2,397	13.0
Charlevoix**	10.3	9.7	-6.1	1,437	1,369	-4.7	**	217	*	**	673	*
Cheboygan	19.9	16.0	-19.6	2,400	1,987	-17.2	396	405	2.3	1,208	1,370	13.4
Chippewa	10.9	11.5	5.5	1,963	2,018	2.8	457	421	-7.9	1,391	1,585	14.0
Clare	13.1	11.6	-11.7	1,548	1,609	4.0	494	506	2.4	2,113	2,389	13.1
Clinton	4.9	5.7	17.0	1,822	2,106	15.6	417	388	-7.0	1,180	1,404	19.0
Crawford	10.6	8.7	-17.7	592	588	-0.8	248	233	-6.0	713	769	7.8
Delta	10.2	9.1	-10.7	2,007	1,869	-6.9	510	480	-5.9	1,822	1,914	5.0
Dickinson	7.3	6.4	-12.4	1,080	988	-8.5	322	305	-5.3	901	937	4.0
Eaton	5.0	5.9	19.5	2,989	3,467	16.0	1,037	984	-5.1	2,722	3,143	15.5
Emmet**	11.9	11.2	-5.6	2,270	2,194	-3.3	525	331	-37.0	1,620	1,135	-29.9
Genesee	10.3	8.9	-13.6	19,552	19,313	-1.2	9,751	8,837	-9.4	25,942	30,601	18.0
Gladwin	13.6	12.2	-10.5	1,346	1,375	2.2	358	371	3.6	1,316	1,489	13.1
Gogebic	7.3	6.1	-16.4	631	637	1.1	221	217	-1.8	873	986	13.0
Gr. Traverse**	8.1	7.8	-3.7	3,790	3,653	-3.6	1,150	1,096	-4.7	2,587	2,817	8.9
Gratiot	8.0	9.7	21.3	1,695	1,993	17.6	483	495	2.5	1,513	1,770	17.0
Hillsdale	8.7	8.8	1.5	2,128	2,000	-6.0	508	470	-7.5	1,580	1,755	11.1
Houghton	7.1	7.8	10.8	1,251	1,413	13.0	316	312	-1.3	1,449	1,574	8.6
Huron	10.8	9.8	-9.3	1,921	1,619	-15.7	291	269	-7.6	1,378	1,471	6.7
Ingham	5.9	6.7	13.6	9,335	10,403	11.4	5,011	4,664	-6.9	11,351	14,031	23.6
Ionia	7.8	8.8	11.9	2,266	2,653	17.0	669	702	4.9	2,138	2,512	17.5
Iosco	13.0	12.0	-7.4	1,351	1,284	-5.0	388	430	10.8	1,597	1,762	10.3
Iron	9.0	9.5	5.9	509	579	13.8	146	150	2.7	546	593	8.6
Isabella	5.2	5.9	12.1	1,806	2,187	21.1	643	719	11.8	2,157	2,474	14.7
Jackson	8.0	7.4	-7.9	6,469	6,090	-5.9	2,553	2,555	0.1	6,200	7,033	13.4
Kalamazoo	5.7	5.7	-1.2	7,595	7,644	0.6	3,587	3,545	-1.2	9,615	11,733	22.0
Kalkaska	11.2	9.4	-16.1	898	814	-9.3	273	309	13.2	807	899	11.4
Kent	7.6	6.8	-11.4	25,636	21,400	-16.5	8,852	8,799	-0.6	22,008	25,741	17.0
Keweenaw	15.8	13.8	-12.5	152	154	1.3	21	14	-33.3	79	79	0.0
Lake	14.4	12.6	-12.1	541	544	0.6	241	217	-10.0	977	1,070	9.4
Lapeer	10.4	10.2	-1.6	4,640	4,548	-2.0	709	759	7.1	1,936	2,199	13.6
Leelanau**	6.6	6.9	4.0	779	776	-0.4	**	117	*	**	269	*

¹Please note: The U.S. Department of Labor (DOL) has changed the method by which it estimates employment and unemployment on the statewide, metropolitan and county levels. The monthly statewide unemployment figures on which the above quarterly statewide numbers are based were posted by the department during March 2005 based on the new model, and differ from those posted by the department previously. County level unemployment figures based on the new model are not final, however, and therefore the county level figures above are based on the Department of Labor's previous data. Final county estimates based on the new model will be made available by the DOL later this year, and at that time this publication will use the new numbers.

²In some cases the Michigan number is slightly different from the county total.

*Cannot be calculated.

**Public Assistance data for Charlevoix is combined with and reported as Emmet, Public Assistance data for Leelanau is combined with and reported as Grand Traverse, and Public Assistance data for Missaukee is combined with and reported as Wexford.

Data sources: Unemployment: Bureau of Labor Statistics, Local Area Unemployment Statistics; Public Assistance: Michigan Department of Human Services.

Family Independence Program (Cash Assistance)

Total Number of Applications			Average Number of Families Receiving Cash Assistance Per Month			Application Approvals: Unemployment Benefits Exhausted, Layoff or Discharge, Depleted Savings, Non-Exempt Property or Loss of Other Resources			Total Number of Denials		Income Exceeds Standards as Percent of Denials		Percent of Cases Without Earned Income, Out of Total Cases Expected to Work	
Qtr 1 2004	Qtr 1 2005	% change	Qtr 1 2004	Qtr 1 2005	% change	Qtr 1 2004	Qtr 1 2005	% change	Qtr 1 2004	Qtr 1 2005	Qtr 1 2004	Qtr 1 2005	Qtr 1 2004	Qtr 1 2005
48,437	45,497	-6.1	78,226	78,784	0.7	2,571	2,314	-10.0	20,314	20,422	42.5	42.9	67%	67%
41	53	29.3	46	49	6.5	0	0	*	19	21	52.6	38.1	93%	48%
41	25	-39.0	31	22	-30.1	8	1	-87.5	19	10	57.9	70.0	52%	67%
427	434	1.6	385	382	-0.7	61	40	-34.4	187	215	47.6	50.2	65%	59%
182	164	-9.9	188	182	-3.2	37	26	-29.7	77	62	48.1	58.1	37%	45%
98	111	13.3	69	75	7.7	1	4	300.0	55	55	70.9	67.3	7%	56%
83	66	-20.5	114	103	-9.6	13	4	-69.2	31	35	32.3	40.0	60%	61%
52	28	-46.2	55	64	15.7	0	0	*	9	9	33.3	44.4	47%	60%
214	191	-10.7	229	256	11.6	49	21	-57.1	82	94	52.4	54.3	53%	63%
542	518	-4.4	743	826	11.1	37	37	0.0	190	208	36.3	46.6	58%	47%
81	74	-8.6	57	53	-5.9	9	24	166.7	51	40	56.9	62.5	52%	19%
1,162	986	-15.1	1,483	1,337	-9.9	29	20	-31.0	507	521	41.8	36.9	52%	57%
234	293	25.2	277	234	-15.6	29	31	6.9	113	162	50.4	45.1	64%	57%
1,058	994	-6.0	1,400	1,464	4.6	64	75	17.2	444	454	46.8	54.2	70%	68%
229	219	-4.4	323	328	1.5	8	12	50.0	103	98	46.6	44.9	62%	60%
**	65	*	**	49	*	**	4	*	**	28	*	39.3	**	**
158	173	9.5	150	124	-17.3	10	10	0.0	82	90	61.0	67.8	82%	80%
198	151	-23.7	180	172	-4.4	23	17	-26.1	62	55	33.9	45.5	75%	73%
182	210	15.4	278	308	10.5	14	28	100.0	90	112	44.4	44.6	59%	48%
178	148	-16.9	130	130	0.3	18	4	-77.8	92	87	57.6	44.8	50%	66%
95	83	-12.6	93	93	0.0	8	8	0.0	44	35	43.2	60.0	49%	63%
165	142	-13.9	162	154	-5.1	6	10	66.7	72	61	52.8	60.7	36%	74%
123	84	-31.7	78	70	-10.3	12	12	0.0	59	31	49.2	51.6	36%	0%
414	333	-19.6	366	356	-2.6	19	11	-42.1	191	161	46.6	42.9	53%	61%
158	90	-43.0	120	87	-27.7	5	2	-60.0	79	37	53.2	40.5	39%	43%
3,527	3,451	-2.2	6,546	6,660	1.7	190	166	-12.6	1,448	1,466	35.6	38.7	61%	60%
132	133	0.8	136	150	9.8	7	7	0.0	56	62	32.1	32.3	60%	45%
72	61	-15.3	122	151	24.1	5	2	-60.0	15	15	66.7	53.3	34%	55%
346	284	-17.9	205	156	-24.1	24	16	-33.3	193	163	56.0	58.9	57%	78%
199	237	19.1	245	250	2.0	17	28	64.7	110	122	61.8	46.7	58%	59%
234	219	-6.4	198	189	-4.5	26	24	-7.7	92	100	51.1	47.0	55%	60%
69	70	1.4	97	89	-8.2	4	8	100.0	16	21	62.5	71.4	48%	65%
67	72	7.5	113	125	10.7	13	12	-7.7	26	24	61.5	87.5	63%	54%
1,527	1,415	-7.3	1,601	1,714	7.1	78	66	-15.4	715	704	38.2	41.1	54%	65%
281	306	8.9	252	253	0.4	13	7	-46.2	123	135	45.5	47.4	77%	63%
145	140	-3.4	165	146	-11.7	3	5	66.7	58	66	39.7	56.1	59%	56%
50	39	-22.0	80	67	-16.3	9	6	-33.3	16	12	62.5	58.3	48%	42%
274	253	-7.7	288	297	2.9	7	3	-57.1	109	119	50.5	43.7	65%	64%
821	841	2.4	1,209	1,144	-5.3	48	28	-41.7	397	411	39.3	38.2	70%	70%
1,273	1,215	-4.6	1,789	1,709	-4.5	40	46	15.0	460	522	34.6	34.5	71%	70%
122	96	-21.3	86	61	-28.4	20	8	-60.0	36	33	41.7	60.6	38%	48%
3,115	2,944	-5.5	4,389	4,398	0.2	189	163	-13.8	1,305	1,357	43.6	43.0	46%	49%
3	2	-33.3	5	3	-40.0	0	0	*	0	0	*	*	0%	0%
87	102	17.2	162	139	-14.2	11	10	-9.1	19	32	21.1	37.5	64%	83%
284	292	2.8	264	251	-4.7	16	11	-31.3	124	154	50.0	50.6	58%	61%
**	38	*	**	21	*	**	3	*	**	23	*	52.2	**	**

¹Please note: The U.S. Department of Labor (DOL) has changed the method by which it estimates employment and unemployment on the statewide, metropolitan and county levels. The monthly statewide unemployment figures on which the above quarterly statewide numbers are based were posted by the department during March 2005 based on the new model, and differ from those posted by the department previously. County level unemployment figures based on the new model are not final, however, and therefore the county level figures above are based on the Department of Labor's previous data. Final county estimates based on the new model will be made available by the DOL later this year, and at that time this publication will use the new numbers.

²In some cases the Michigan number is slightly different from the county total.

*Cannot be calculated.

**Public Assistance data for Charlevoix is combined with and reported as Emmet, Public Assistance data for Leelanau is combined with and reported as Grand Traverse, and Public Assistance data for Missaukee is combined with and reported as Wexford.

Data sources: Unemployment: Bureau of Labor Statistics, Local Area Unemployment Statistics; Public Assistance: Michigan Department of Human Services.

Prepared by: Michigan League for Human Services	Unemployment (data not seasonally adjusted)						Food Assistance Program					
	Unemployment Rate			Number Unemployed			Total Number of Applications			Average Number of Households Receiving Food Assistance Per Month		
	Qtr 1 2004	Qtr 1 2005	% change	Qtr 1 2004	Qtr 1 2005	% change	Qtr 1 2004	Qtr 1 2005	% change	Qtr 1 2004	Qtr 1 2005	% change
Lenawee	7.7	8.1	5.2	3,747	4,071	8.6	1,036	1,094	5.6	2,813	3,169	12.6
Livingston	4.6	6.0	31.2	3,998	5,338	33.5	782	827	5.8	1,633	2,002	22.6
Luce	7.9	9.0	14.8	220	269	22.1	112	84	-25.0	413	361	-12.7
Mackinac	22.5	22.5	0.0	1,288	1,249	-3.0	77	114	48.1	253	365	44.6
Macomb	6.8	7.8	15.3	29,110	31,890	9.6	7,310	7,886	7.9	18,936	22,705	19.9
Manistee	10.9	10.3	-5.5	1,253	1,203	-4.0	295	329	11.5	1,079	1,333	23.5
Marquette	7.3	7.3	0.5	2,438	2,631	7.9	673	665	-1.2	2,181	2,488	14.1
Mason	13.2	10.8	-17.9	2,011	1,575	-21.7	396	390	-1.5	1,364	1,511	10.8
Mecosta	8.3	9.3	12.0	1,599	1,839	15.0	614	652	6.2	2,065	2,534	22.7
Menominee	8.1	6.2	-23.6	967	843	-12.8	277	285	2.9	959	1,048	9.3
Midland	7.2	7.1	-0.9	3,107	2,996	-3.6	874	833	-4.7	2,656	3,104	16.9
Missaukee**	10.5	9.8	-6.4	727	682	-6.2	**	**	*	**	633	*
Monroe	7.4	6.7	-9.0	5,585	5,317	-4.8	1,318	1,438	9.1	3,630	4,295	18.3
Montcalm	9.9	9.9	-0.7	2,640	2,940	11.4	776	785	1.2	2,400	2,815	17.3
Montmorency	17.9	15.7	-12.6	694	699	0.7	119	132	10.9	556	616	10.8
Muskegon	9.8	7.8	-20.1	8,177	7,117	-13.0	3,808	3,522	-7.5	10,714	12,853	20.0
Newaygo	10.1	9.7	-3.3	2,274	2,263	-0.5	604	561	-7.1	2,194	2,511	14.4
Oakland	5.5	6.3	15.9	35,653	39,073	9.6	10,215	10,229	0.1	22,255	25,493	14.5
Oceana	12.1	12.8	5.2	1,635	1,547	-5.4	395	427	8.1	1,431	1,535	7.3
Ogemaw	11.8	10.3	-13.0	1,129	1,002	-11.2	290	316	9.0	1,442	1,687	17.0
Ontonagon	9.3	8.4	-10.4	268	309	15.3	67	80	19.4	310	346	11.7
Osceola	9.6	9.6	0.0	1,059	1,007	-4.9	342	313	-8.5	1,265	1,423	12.5
Oscoda	15.6	13.6	-12.8	499	518	3.9	124	119	-4.0	573	626	9.2
Otsego	8.5	8.4	-0.4	1,169	1,078	-7.8	327	304	-7.0	997	1,084	8.8
Ottawa	6.1	6.1	0.0	8,713	8,175	-6.2	1,878	1,840	-2.0	4,217	4,990	18.3
Presque Isle	18.8	17.1	-9.2	1,179	1,078	-8.6	160	126	-21.3	490	539	9.9
Roscommon	12.3	10.0	-18.6	1,097	1,168	6.4	307	366	19.2	1,641	1,806	10.0
Saginaw	9.8	9.1	-6.5	9,763	9,309	-4.6	3,804	3,886	2.2	12,139	13,960	15.0
Saint Clair	9.4	9.5	0.4	7,691	7,849	2.0	2,382	2,208	-7.3	6,250	7,147	14.3
Saint Joseph	7.4	6.9	-6.3	2,325	2,178	-6.3	933	858	-8.0	2,731	2,903	6.3
Sanilac	13.2	10.9	-17.7	2,738	2,337	-14.6	618	564	-8.7	2,045	2,246	9.9
Schoolcraft	14.0	14.3	1.7	610	575	-5.7	105	101	-3.8	457	485	6.0
Shiawassee	9.2	9.1	-0.4	3,186	3,476	9.1	954	922	-3.4	2,674	3,079	15.1
Tuscola	10.9	9.7	-11.3	3,224	2,953	-8.4	545	563	3.3	1,905	2,234	17.3
Van Buren	9.5	9.0	-5.3	3,641	3,771	3.6	1,440	1,416	-1.7	3,919	4,440	13.3
Washtenaw	3.4	4.8	40.2	6,368	9,047	42.1	2,760	2,979	7.9	6,689	8,210	22.7
Wayne	8.5	9.1	7.5	75,785	84,188	11.1	46,867	43,642	-6.9	126,039	148,557	17.9
Wexford**	9.8	8.9	-9.2	1,461	1,331	-8.9	735	473	-35.6	2,307	2,018	-12.5

FACT

If job growth since the recession ended had just kept up with working-age population growth, Michigan would have approximately 198,500 more jobs than it actually now has.

*Cannot be calculated.

**Public Assistance data for Charlevoix is combined with and reported as Emmet, Public Assistance data for Leelanau is combined with and reported as Grand Traverse, and Public Assistance data for Missaukee is combined with and reported as Wexford.

Data sources: Unemployment: Bureau of Labor Statistics, Local Area Unemployment Statistics; Public Assistance: Michigan Department of Human Services.

Family Independence Program (Cash Assistance)

Total Number of Applications			Average Number of Families Receiving Cash Assistance Per Month			Application Approvals: Unemployment Benefits Exhausted, Layoff or Discharge, Depleted Savings, Non-Exempt Property or Loss of Other Resources			Total Number of Denials		Income Exceeds Standards as Percent of Denials		Percent of Cases Without Earned Income, Out of Total Cases Expected to Work	
Qtr 1 2004	Qtr 1 2005	% change	Qtr 1 2004	Qtr 1 2005	% change	Qtr 1 2004	Qtr 1 2005	% change	Qtr 1 2004	Qtr 1 2005	Qtr 1 2004	Qtr 1 2005	Qtr 1 2004	Qtr 1 2005
398	351	-11.8	376	382	1.8	9	12	33.3	188	153	51.6	51.0	45%	46%
293	309	5.5	142	147	3.0	10	14	40.0	181	182	50.8	59.3	43%	61%
38	39	2.6	40	28	-29.4	5	0	-100.0	25	15	56.0	46.7	49%	75%
38	54	42.1	30	43	46.1	8	12	50.0	21	24	90.5	54.2	23%	0%
2,294	2,217	-3.4	2,372	2,486	4.8	152	102	-32.9	1,114	1,123	49.4	48.9	63%	68%
102	130	27.5	134	125	-6.2	17	5	-70.6	38	68	55.3	55.9	58%	56%
155	180	16.1	246	251	1.8	11	13	18.2	51	58	54.9	58.6	62%	62%
154	154	0.0	206	217	5.3	15	21	40.0	50	45	62.0	40.0	56%	60%
213	181	-15.0	208	223	7.2	6	2	-66.7	87	71	43.7	57.7	67%	72%
100	76	-24.0	96	72	-24.9	14	2	-85.7	36	31	22.2	32.3	76%	100%
315	266	-15.6	333	345	3.7	41	23	-43.9	155	126	45.8	56.3	49%	48%
**	73	*	**	56	*	**	4	*	**	35	*	42.9	**	**
516	505	-2.1	595	623	4.7	22	19	-13.6	259	268	39.4	35.1	68%	66%
304	329	8.2	320	295	-7.6	19	23	21.1	163	150	46.0	52.7	68%	66%
54	41	-24.1	51	52	1.3	6	4	-33.3	24	21	45.8	57.1	53%	38%
1,391	1,282	-7.8	2,631	2,707	2.9	76	74	-2.6	473	467	52.2	53.3	72%	71%
218	204	-6.4	293	291	-0.6	20	15	-25.0	88	66	29.5	31.8	73%	73%
2,843	2,759	-3.0	3,274	3,346	2.2	138	100	-27.5	1,482	1,531	43.3	47.4	61%	68%
166	195	17.5	327	330	0.8	50	41	-18.0	54	63	53.7	69.8	70%	67%
103	108	4.9	151	166	9.9	21	35	66.7	47	34	51.1	52.9	46%	61%
19	25	31.6	34	35	2.9	1	6	500.0	9	8	77.8	75.0	26%	47%
147	143	-2.7	174	189	8.4	12	8	-33.3	63	55	58.7	45.5	66%	74%
38	48	26.3	58	58	0.0	7	10	42.9	17	17	35.3	35.3	59%	22%
139	108	-22.3	87	78	-10.3	8	5	-37.5	71	55	67.6	52.7	77%	67%
581	505	-13.1	459	494	7.6	18	7	-61.1	230	240	50.4	52.5	59%	64%
46	54	17.4	38	47	22.8	2	3	50.0	19	24	42.1	58.3	0%	0%
106	141	33.0	191	161	-15.7	1	5	400.0	35	50	51.4	46.0	31%	28%
1,497	1,498	0.1	3,081	3,005	-2.5	98	106	8.2	651	697	43.6	33.1	50%	51%
853	760	-10.9	1,049	1,022	-2.6	59	65	10.2	346	300	37.9	39.7	68%	63%
341	336	-1.5	368	326	-11.6	21	31	47.6	159	189	36.5	42.3	66%	65%
235	213	-9.4	282	229	-18.6	61	37	-39.3	85	78	50.6	48.7	55%	63%
43	33	-23.3	63	50	-20.5	1	2	100.0	12	11	58.3	27.3	58%	92%
400	334	-16.5	298	302	1.2	14	27	92.9	198	163	49.5	50.9	52%	45%
275	253	-8.0	233	252	8.1	19	19	0.0	122	104	42.6	40.4	58%	65%
531	497	-6.4	662	648	-2.1	56	42	-25.0	237	261	46.4	43.3	54%	65%
827	787	-4.8	1,165	1,233	5.9	4	17	325.0	332	363	36.1	37.7	63%	65%
13,642	12,292	-9.9	32,928	33,332	1.2	358	365	2.0	5,105	4,964	37.2	36.4	72%	70%
279	172	-38.4	319	244	-23.5	11	18	63.6	111	90	46.8	51.1	73%	71%

FACT

The state of Michigan had 117,500 fewer jobs in April 2005 than in November 2001 when the recession officially ended--a decline of 2.6%.

*Cannot be calculated.

**Public Assistance data for Charlevoix is combined with and reported as Emmet, Public Assistance data for Leelanau is combined with and reported as Grand Traverse, and Public Assistance data for Missaukee is combined with and reported as Wexford.

Data sources: Unemployment: Bureau of Labor Statistics, Local Area Unemployment Statistics; Public Assistance: Michigan Department of Human Services.

Employment Trends by Selected Industries in Michigan
(data not seasonally adjusted, rounded to the nearest hundred)

Industry	Avg 2004 Qtr 1	Avg 2005 Qtr 1	% Change	Industry	Avg 2003 Qtr 4	Avg 2004 Qtr 4	% Change
TOTAL NONFARM	4,314,600	4,309,700	-0.1	Trade Transportation & Utilities	792,900	799,200	0.8
TOTAL PRIVATE	3,617,400	3,607,800	-0.3	• Wholesale Trade	167,800	170,100	1.4
GOODS PRODUCING	872,000	853,000	-2.2	Merchant Wholesalers			
SERVICE-PROVIDING	3,442,600	3,456,800	0.4	Durable Goods	95,000	95,600	0.6
Natural Resources and Mining	7,500	7,400	-1.3	Merchant Wholesalers			
Mining	5,800	5,800	0.0	Nondurable Goods	48,400	50,000	3.3
Mining except oil and gas	3,800	3,700	-2.6	Wholesale Electronic, Markets,			
Construction	165,900	167,800	1.1	Agents and Brokers	24,400	24,500	0.4
Construction of Buildings	42,000	42,200	0.5	• Retail Trade	502,900	505,100	0.4
Heavy and Civil Engineering	12,000	11,800	-1.7	Motor Vehicle and Parts Dealers	61,000	63,100	3.4
Specialty Trade Contractors	111,900	113,700	1.6	Furniture and Home Furnishings	18,500	18,400	-0.5
Manufacturing	698,600	677,800	-3.0	Electronics and Appliance	16,900	17,600	4.1
• Durable Goods	552,100	532,200	-3.6	Building Material and Garden Equip.			
Wood Product Manufacturing	11,100	11,200	0.9	and Supplies Dealers	43,300	44,800	3.5
Nonmetallic Mineral Products	15,500	15,300	-1.3	Food and Beverage Stores	86,000	86,600	0.7
Primary Metal Manufacturing	27,400	27,300	-0.4	Health and Personal Care	32,400	32,200	-0.6
Fabricated Metal Product	82,600	82,600	0.0	Gasoline Stations	25,700	25,800	0.4
Machinery Manufacturing	75,700	75,900	0.3	Clothing and Clothing Accessories	39,300	40,700	3.6
Computer & Electronic Products	19,000	19,100	0.5	Sporting Goods, Hobby, Book,			
Electrical Equipment and				and Music Stores	24,400	25,800	5.7
Appliances	14,300	13,600	-4.9	General Merchandise Stores	115,300	109,300	-5.2
Motor Vehicle Manufacturing	73,100	65,000	-11.1	Miscellaneous Store Retail	28,300	30,000	6.0
Motor Vehicle Parts				• Transportation & Warehousing	101,900	103,700	1.8
Manufacturing	174,600	165,700	-5.1	Rail Transportation	5,000	5,100	2.0
Furniture and Related Products	25,600	24,800	-3.1	Truck Transportation	33,700	35,700	5.9
Miscellaneous Manufacturing	17,500	17,300	-1.1	Warehousing and Storage	15,400	15,500	0.6
• Non-Durable Goods	146,600	145,500	-0.8	Information	68,500	65,900	-3.8
Food Manufacturing	31,500	30,500	-3.2	Publishing Industries	25,500	24,400	-4.3
Paper Manufacturing	14,800	14,400	-2.7	Telecommunications	22,800	21,700	-4.8
Printing and Related Support				Financial Activities	214,500	216,300	0.8
Activities	18,300	18,500	1.1	Finance and Insurance	160,100	161,300	0.7
Chemical Manufacturing	28,000	27,700	-1.1	Real Estate	37,200	37,800	1.6
Plastics and Rubber Products	42,900	42,400	-1.2	Rental and Leasing Services	16,300	16,000	-1.8

Note: Industry details and subtotals may not sum to totals due to rounding.

Source: Department of Labor and Economic Growth/Office of Labor Market Information, Current Employment Statistics Section - (800) 225-3732

Employment Trends by Selected Industries in Michigan
(data not seasonally adjusted, rounded to the nearest hundred)

Industry	Avg 2003 Qtr 4	Avg 2004 Qtr 4	% Change	Industry	Avg 2003 Qtr 4	Avg 2004 Qtr 4	% Change
Professional & Business Services	563,900	559,500	-0.8	Other Services	176,700	176,200	-0.3
Legal Services	29,100	29,100	0.0	Repair and Maintenance	42,800	42,200	-1.4
Accounting and Tax Preparation	31,600	30,600	-3.2	Personal and Laundry Services	40,700	40,800	0.2
Architectural Engineering	70,300	67,900	-3.4	Religious Grantmaking Civic Professional	93,100	93,200	0.1
Computer Systems Design	38,500	39,100	1.6	Government	697,200	701,900	0.7
Management, Scientific and Technical Consulting Services	18,400	19,400	5.4	• Federal Government	55,200	54,800	-0.7
Scientific Research and Development Services	23,800	24,000	0.8	Federal Government Hospital Services	5,800	5,900	1.7
Advertising and Related	16,100	16,600	3.1	U.S. Postal Service	28,100	27,500	-2.1
Other Professional Scientific and Technical Services	14,400	14,500	0.7	• State Government	174,200	172,600	-0.9
Management of Companies	68,200	68,300	0.1	State Government Educational Services	102,600	101,800	-0.8
Administrative & Support Services	249,200	245,900	-1.3	State Government Hospital Services	13,800	14,500	5.1
Educational and Health Services	551,400	555,200	0.7	• Local Government	467,700	474,500	1.5
• Educational Services (see also Government)	72,100	68,300	-5.3	Local Government Educational Services	287,300	289,900	0.9
• Health Care & Social Assistance	479,300	486,800	1.6	Local Government Hospitals	13,200	13,300	0.8
Ambulatory Health Care Services	158,700	162,100	2.1	Local Government Elementary and Secondary Schools	265,400	267,700	0.9
Offices of Physicians	63,400	64,700	2.1	Local Government Junior Colleges	21,200	21,500	1.4
Offices of Dentists	31,200	31,300	0.3				
Offices of Other Health Professionals	18,700	18,700	0.0				
Home Health Care Service	23,500	24,000	2.1				
Hospitals	178,800	182,400	2.0				
Nursing and Residential Care	86,200	86,300	0.1				
—Nursing Care Facilities	41,000	39,800	-2.9				
—Community Care Facilities	21,200	21,100	-0.5				
Social Assistance	55,600	56,000	0.7				
Individual and Family Services	24,600	23,000	-6.5				
Leisure and Hospitality	377,500	382,500	1.3				
Performing Arts Spectator Activities	8,600	8,400	-2.3				
Amusement, Gambling & Recreation	39,400	40,900	3.8				
Accommodation	32,900	32,600	-0.9				
Food Services and Drinking	293,300	298,700	1.8				

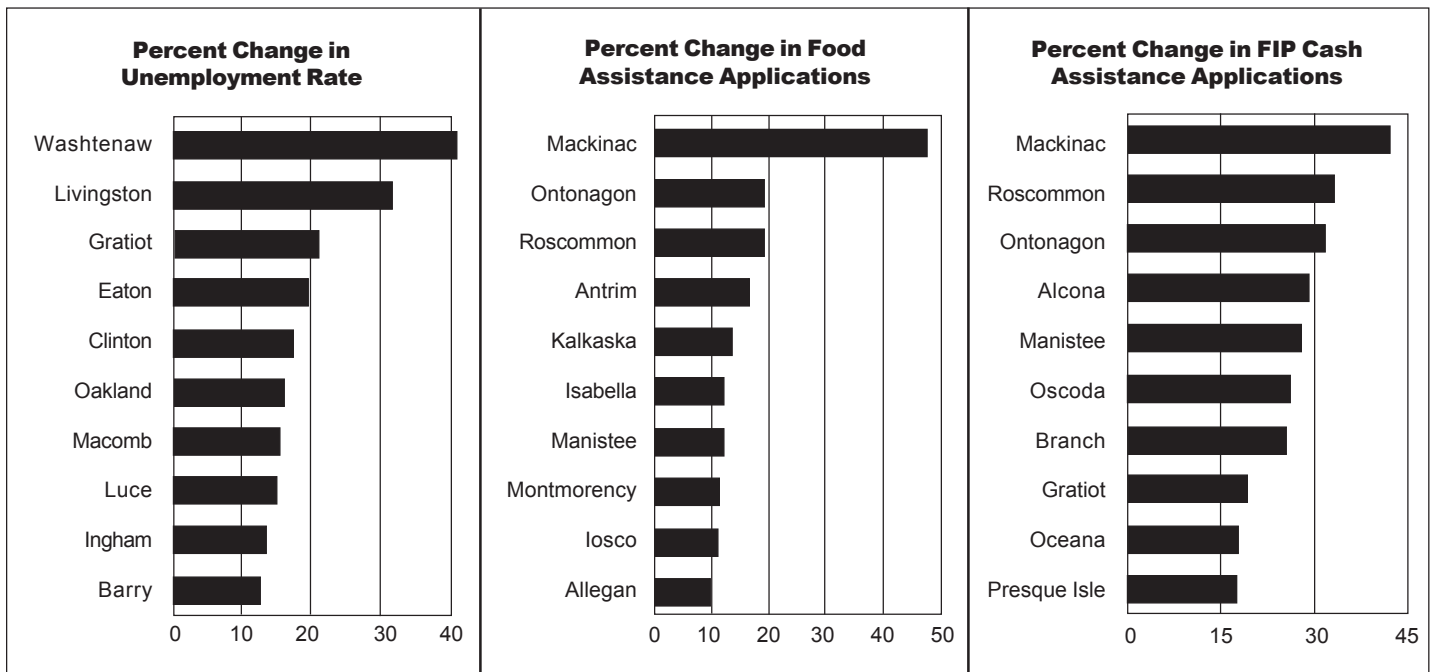
VISIT OUR WEBSITE FOR MORE INFORMATION!

The "Work and Wages" section of the Michigan League for Human Services website has information on Workforce Development, Work Supports, Unemployment, and Self-Sufficiency. It also includes back issues of the Economic Security Bulletin. Go to <http://www.MiLHS.org> and click the "Work and Wages" tab at the right.

Note: Industry details and subtotals may not sum to totals due to rounding.

Source: Department of Labor and Economic Growth/Office of Labor Market Information, Current Employment Statistics Section - (800) 225-3732

Percentage Change in Michigan Counties With Largest Increases Fourth Quarter 2004 — First Quarter 2005



Sources: Unemployment: Bureau of Labor Statistics, Local Area Unemployment Statistics; Public Assistance: Michigan Department of Human Services.