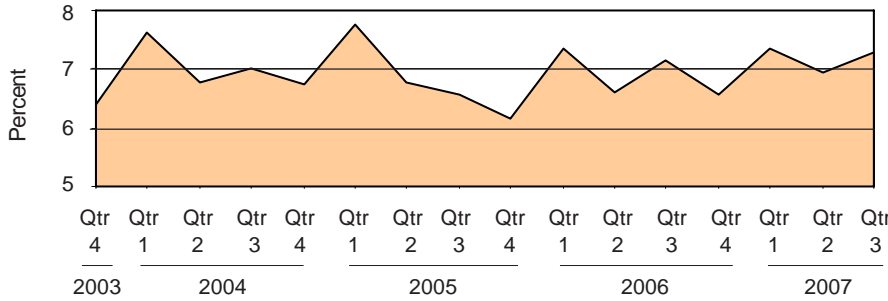


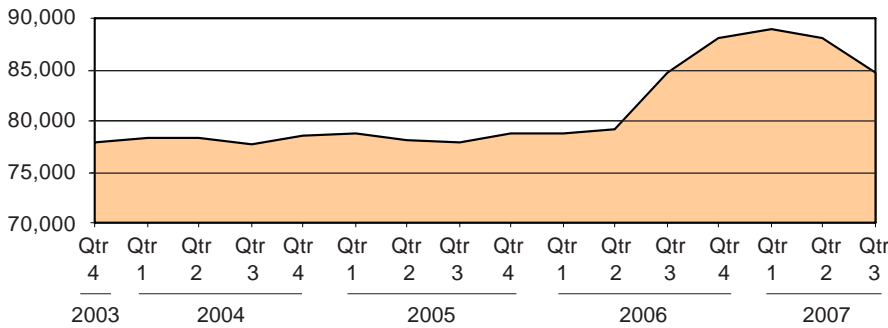


Michigan's Unemployment Rate  
Over the Past Four Years  
(not seasonally adjusted)



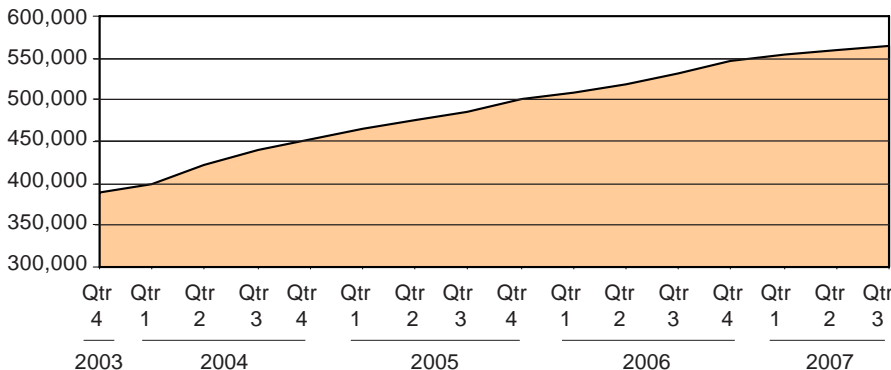
Source: Bureau of Labor Statistics

Family Independence Program Cases in Michigan  
Over the Past Four Years



Source: Michigan Department of Human Services

Food Assistance Households Over the Past Four Years



Source: Michigan Department of Human Services

## FIP Caseloads Decreasing after Spike

### Unemployment

Michigan's unemployment rate changed little between Quarter 3 of 2006 and that of 2007, at 7.1 and 7.3 respectively. Clare, Lake, Montcalm and Montmorency counties had an unemployment rate of more than 10 percent, although Montcalm also saw the largest decrease (2.7 percentage points) during that time.


### Public Assistance

After a stark increase that began in the third quarter of 2006, FIP caseloads decreased for the second quarter in a row. This puts them at roughly the same level (84,635) during the third quarter of 2007 as they were a year ago, but significantly higher than they were before the spike (79,204). This may be due in part to new citizen documentation requirements for Medicaid, as has been shown to be the case in some other states.

Food Assistance applications and households also continued to increase. Caseloads in Oakland, Macomb, St. Clair, Washtenaw, Jackson, Livingston, and several smaller counties increased by more than 10 percent during the past year. Using the most recent population estimates, in September 2007 approximately 12 percent of Michigan residents were in a household receiving Food Assistance.

### Sectoral Trends

Between the third quarter of 2006 and that of 2007, Michigan lost approximately 17,000 construction jobs, 20,000 manufacturing jobs, 16,000 local government jobs, and over 11,000 elementary and secondary school jobs. The state did make gains in every industry of the "Health Care and Social Assistance" sector, however, with ambulatory health care services gaining the most jobs.

 Prepared by: Michigan League for Human Services	Unemployment (data not seasonally adjusted)						Food Assistance Program					
	Unemployment Rate			Number Unemployed			Total Number of Applications			Average Number of Households Receiving Food Assistance Per Month		
	Qtr 3 2006	Qtr 3 2007	+/- points	Qtr 3 2006	Qtr 3 2007	% change	Qtr 3 2006	Qtr 3 2007	% change	Qtr 3 2006	Qtr 3 2007	% change
<b>Michigan<sup>1</sup></b>	<b>7.1</b>	<b>7.3</b>	<b>0.2</b>	<b>365,055</b>	<b>370,164</b>	<b>1.4</b>	<b>163,072</b>	<b>166,020</b>	<b>1.8</b>	<b>532,349</b>	<b>564,320</b>	<b>6.0</b>
Alcona	9.2	8.7	-0.5	427	398	-6.6	135	110	-18.5	545	558	2.3
Alger	6.6	7.1	0.5	313	332	5.9	85	72	-15.3	303	361	19.0
Allegan	5.9	6.1	0.2	3,418	3,486	2.0	1,341	1,500	11.9	3,963	4,334	9.4
Alpena	6.9	8.1	1.2	1,049	1,201	14.5	553	539	-2.5	2,147	2,268	5.7
Antrim	6.7	6.7	0.1	861	868	0.8	311	310	-0.3	872	991	13.7
Arenac	8.4	9.0	0.5	699	712	1.9	247	281	13.8	1,175	1,159	-1.3
Baraga	9.8	12.1	2.3	433	534	23.2	174	166	-4.6	443	475	7.2
Barry	5.3	5.3	0.0	1,652	1,650	-0.1	631	729	15.5	2,243	2,373	5.8
Bay	6.8	6.9	0.1	3,828	3,711	-3.1	1,499	1,502	0.2	6,660	7,027	5.5
Benzie	6.1	6.3	0.2	594	605	2.0	264	209	-20.8	650	697	7.2
Berrien	7.2	6.7	-0.5	5,819	5,347	-8.1	3,026	3,100	2.4	9,945	10,390	4.5
Branch	7.7	7.3	-0.5	1,795	1,609	-10.4	728	745	2.3	2,126	2,366	11.3
Calhoun	7.2	7.0	-0.2	5,239	4,965	-5.2	2,883	3,023	4.9	10,063	10,807	7.4
Cass	5.6	4.6	-1.0	1,569	1,272	-18.9	728	772	6.0	2,566	2,731	6.4
Charlevoix	6.4	7.3	0.9	955	1,102	15.4	272	264	-2.9	761	856	12.4
Cheboygan	5.2	5.2	0.0	765	761	-0.5	392	417	6.4	1,422	1,622	14.1
Chippewa	7.1	7.3	0.2	1,312	1,334	1.7	518	507	-2.1	1,679	1,822	8.5
Clare	10.2	10.0	-0.2	1,392	1,363	-2.1	578	599	3.6	2,684	2,879	7.3
Clinton	5.5	5.7	0.2	2,058	2,107	2.4	568	555	-2.3	1,703	1,849	8.6
Crawford	6.9	7.1	0.2	492	502	2.0	258	311	20.5	855	887	3.7
Delta	6.1	6.8	0.6	1,313	1,411	7.5	484	546	12.8	2,059	2,205	7.1
Dickinson	5.3	5.7	0.4	798	844	5.7	346	325	-6.1	1,076	1,149	6.8
Eaton	5.2	5.4	0.2	3,085	3,190	3.4	1,390	1,374	-1.2	3,675	3,934	7.0
Emmet	6.1	6.4	0.3	1,305	1,375	5.3	392	392	0.0	1,296	1,372	5.9
Genesee	8.7	8.7	0.0	18,494	17,819	-3.7	10,673	11,245	5.4	34,897	36,955	5.9
Gladwin	9.5	9.8	0.3	1,052	1,055	0.3	360	393	9.2	1,678	1,813	8.0
Gogebic	7.2	7.5	0.3	568	577	1.5	311	235	-24.4	1,062	1,135	6.9
Gr. Traverse	5.3	5.7	0.4	2,758	2,968	7.6	1,273	1,300	2.1	3,433	3,810	11.0
Gratiot	8.6	8.6	0.0	1,766	1,729	-2.1	581	597	2.8	2,061	2,219	7.7
Hillsdale	8.3	8.9	0.6	1,908	1,992	4.4	528	622	17.8	2,072	2,304	11.2
Houghton	6.2	6.6	0.4	1,124	1,175	4.6	417	405	-2.9	1,695	1,793	5.7
Huron	7.9	7.3	-0.6	1,467	1,302	-11.2	276	294	6.5	1,687	1,734	2.8
Ingham	6.7	6.7	-0.1	10,356	10,153	-2.0	4,932	5,214	5.7	16,313	17,334	6.3
Ionia	9.0	7.8	-1.2	2,869	2,444	-14.8	845	891	5.4	2,853	3,063	7.4
Iosco	8.2	8.5	0.3	975	1,006	3.1	423	475	12.3	1,891	2,023	7.0
Iron	6.1	6.2	0.1	374	379	1.5	156	153	-1.9	576	631	9.5
Isabella	5.1	5.3	0.2	1,983	2,076	4.7	1,282	1,889	47.3	3,156	3,830	21.4
Jackson	7.6	7.8	0.2	6,013	6,033	0.3	2,905	2,837	-2.3	8,095	9,092	12.3
Kalamazoo	5.6	5.6	0.1	7,503	7,545	0.6	4,063	4,378	7.8	13,972	15,055	7.7
Kalkaska	7.3	7.3	0.0	693	681	-1.7	350	310	-11.4	994	1,111	11.8
Kent	6.0	6.1	0.1	19,520	19,788	1.4	10,198	10,785	5.8	29,623	31,961	7.9
Keweenaw	7.4	8.6	1.1	80	91	14.2	19	14	-26.3	83	84	1.2
Lake	10.3	10.4	0.1	449	439	-2.2	245	276	12.7	1,118	1,145	2.4
Lapeer	7.1	7.8	0.7	3,208	3,518	9.7	910	842	-7.5	2,549	2,882	13.0
Leelanau	4.1	4.5	0.4	505	554	9.7	154	129	-16.2	370	386	4.3
Lenawee	7.6	8.0	0.4	3,896	4,013	3.0	1,400	1,378	-1.6	3,748	4,136	10.3
Livingston	5.3	5.7	0.4	5,013	5,398	7.7	1,088	1,136	4.4	2,535	2,908	14.7
Luce	6.7	8.7	2.1	198	256	29.5	96	92	-4.2	389	436	12.0
Mackinac	3.3	3.6	0.3	267	289	8.0	120	89	-25.8	351	347	-1.3
Macomb	7.6	7.8	0.1	32,458	32,850	1.2	9,098	9,180	0.9	27,214	30,353	11.5

<sup>1</sup>In some cases the Michigan number is slightly different from the county total.

Data sources: Unemployment: Bureau of Labor Statistics, Local Area Unemployment Statistics; Public Assistance: Michigan Department of Human Services.


Family Independence Program (Cash Assistance)									Medicaid							
Total Number of Applications			Average Number of Families Receiving Cash Assistance Per Month			Percent of Cases Without Earned Income, Out of Total Cases Expected to Work			Total Number of Applications			Average Number of Persons Eligible for Medicaid ONLY (Excludes FIP & SSI Recipients)			Percent of Population Eligible for Medicaid (Includes FIP & SSI Recipients) <sup>2</sup>	
Qtr 3 2006	Qtr 3 2007	% change	Qtr 3 2006	Qtr 3 2007	% change	Qtr 3 2006	Qtr 3 2007	% change	Qtr 3 2006	Qtr 3 2007	% change	Qtr 3 2006	Qtr 3 2007	% change	Qtr 3 2006	Qtr 3 2007
<b>51,717</b>	<b>49,533</b>	<b>-4.2</b>	<b>84,760</b>	<b>84,635</b>	<b>-0.1</b>	<b>69%</b>	<b>58%</b>		<b>183,807</b>	<b>170,799</b>	<b>-7.1</b>	<b>1,056,409</b>	<b>1,086,641</b>	<b>2.9</b>	<b>14.9%</b>	<b>15.2%</b>
44	27	-38.6	42	33	-21.4	62%	41%		262	223	-14.9	1,411	1,333	-5.5	14.8%	14.1%
19	31	63.2	23	33	40.0	55%	30%		194	175	-9.8	1,049	1,104	5.2	13.4%	14.1%
452	470	4.0	415	443	6.7	54%	30%		2,284	2,110	-7.6	12,287	12,648	2.9	13.1%	13.5%
171	163	-4.7	192	196	2.1	43%	36%		677	618	-8.7	4,436	4,535	2.2	19.1%	19.8%
95	82	-13.7	59	65	9.6	69%	0%		522	410	-21.5	3,084	3,227	4.6	14.9%	15.5%
92	80	-13.0	103	86	-16.5	54%	24%		394	325	-17.5	2,548	2,532	-0.6	19.3%	19.1%
40	42	5.0	49	50	2.7	59%	66%		153	140	-8.5	1,101	1,102	0.1	16.1%	16.1%
241	227	-5.8	254	254	0.3	48%	34%		965	879	-8.9	5,759	5,913	2.7	11.8%	12.1%
549	483	-12.0	863	792	-8.3	52%	40%		1,818	1,719	-5.4	12,553	12,940	3.1	15.8%	16.1%
78	79	1.3	39	59	51.7	44%	24%		399	336	-15.8	2,097	2,164	3.2	14.1%	14.6%
1,125	1,110	-1.3	1,441	1,413	-1.9	58%	41%		4,392	3,744	-14.8	20,695	21,021	1.6	17.9%	18.1%
318	261	-17.9	283	332	17.6	60%	31%		1,103	997	-9.6	6,004	6,027	0.4	16.4%	16.8%
1,107	1,020	-7.9	1,665	1,860	11.7	71%	55%		3,045	3,186	4.6	17,908	17,767	-0.8	19.0%	19.3%
277	238	-14.1	290	327	12.5	54%	46%		1,090	878	-19.4	6,509	6,626	1.8	16.0%	16.5%
97	99	2.1	52	48	-7.1	*	*		409	342	-16.4	2,819	2,860	1.5	12.1%	12.3%
135	136	0.7	132	145	9.9	77%	20%		608	611	0.5	4,082	4,194	2.7	18.1%	18.7%
158	153	-3.2	161	194	20.5	48%	33%		953	809	-15.1	4,478	4,402	-1.7	14.8%	14.8%
222	216	-2.7	304	333	9.4	68%	66%		970	936	-3.5	5,163	5,334	3.3	22.5%	23.4%
180	156	-13.3	142	136	-4.0	69%	30%		725	657	-9.4	4,579	4,597	0.4	7.9%	7.9%
115	93	-19.1	85	90	6.3	44%	15%		387	350	-9.6	2,057	2,086	1.4	17.3%	17.7%
141	145	2.8	153	168	10.0	57%	31%		890	699	-21.5	4,958	5,013	1.1	16.3%	16.5%
104	97	-6.7	68	60	-12.3	56%	26%		578	508	-12.1	3,512	3,601	2.5	15.0%	15.4%
420	418	-0.5	407	443	8.9	58%	41%		1,663	1,430	-14.0	8,947	9,242	3.3	10.5%	10.9%
127	93	-26.8	63	66	4.8	89%	15%		608	564	-7.2	4,184	4,308	3.0	14.4%	14.7%
3,803	3,687	-3.1	7,156	6,745	-5.7	67%	61%		11,516	10,999	-4.5	55,026	56,450	2.6	19.6%	19.9%
150	164	9.3	184	174	-5.8	47%	34%		558	521	-6.6	3,689	3,708	0.5	17.7%	17.8%
96	65	-32.3	179	165	-7.8	73%	76%		345	334	-3.2	2,163	2,215	2.4	17.8%	18.4%
336	351	4.5	182	188	3.1	64%	23%		1,971	1,695	-14.0	9,388	9,908	5.5	13.0%	13.6%
271	229	-15.5	322	271	-15.8	61%	31%		1,058	906	-14.4	5,472	5,701	4.2	16.9%	17.4%
197	243	23.4	200	249	24.7	63%	28%		726	832	14.6	5,756	5,672	-1.5	15.5%	15.6%
66	78	18.2	111	111	0.3	57%	44%		478	481	0.6	4,595	4,677	1.8	15.5%	15.8%
90	79	-12.2	130	133	2.3	63%	33%		489	481	-1.6	4,616	4,619	0.1	16.4%	16.6%
1,493	1,429	-4.3	2,060	1,855	-10.0	66%	42%		5,693	4,998	-12.2	28,894	29,885	3.4	14.4%	14.8%
355	314	-11.5	289	263	-9.1	54%	39%		1,056	1,006	-4.7	7,183	7,157	-0.4	13.8%	13.7%
149	140	-6.0	143	157	9.5	40%	22%		668	780	16.8	3,963	4,010	1.2	18.5%	18.7%
62	52	-16.1	63	69	8.4	33%	38%		372	307	-17.5	1,829	1,876	2.6	18.3%	18.8%
305	283	-7.2	341	329	-3.4	61%	38%		1,223	1,042	-14.8	6,492	6,920	6.6	12.9%	13.5%
870	853	-2.0	1,080	1,133	4.9	67%	54%		2,913	2,987	2.5	17,967	18,304	1.9	14.9%	15.1%
1,333	1,320	-1.0	2,018	2,031	0.7	67%	47%		4,363	4,286	-1.8	24,026	25,108	4.5	14.3%	14.8%
109	116	6.4	87	85	-2.3	43%	27%		462	372	-19.5	2,852	2,904	1.8	20.2%	20.3%
3,204	3,023	-5.6	4,520	4,559	0.9	53%	51%		11,542	10,115	-12.4	65,925	68,684	4.2	15.0%	15.5%
2	3	50.0	4	4	0.0	33%	100%		27	30	11.1	234	224	-4.3	13.0%	12.4%
92	79	-14.1	126	110	-12.4	59%	42%		354	306	-13.6	1,873	1,838	-1.9	22.9%	22.5%
334	330	-1.2	265	324	22.2	72%	45%		1,307	1,157	-11.5	8,075	8,334	3.2	10.4%	10.8%
36	34	-5.6	21	17	-20.6	*	*		257	195	-24.1	1,264	1,358	7.4	6.4%	6.8%
470	446	-5.1	415	481	15.9	60%	17%		1,755	1,564	-10.9	10,442	10,483	0.4	12.8%	13.0%
389	327	-15.9	181	228	26.0	65%	18%		1,407	1,362	-3.2	8,365	8,971	7.2	5.3%	5.6%
29	41	41.4	29	39	34.1	68%	60%		204	194	-4.9	1,023	1,021	-0.1	19.5%	20.2%
44	32	-27.3	25	29	17.3	100%	6%		279	196	-29.7	1,302	1,238	-4.9	13.6%	13.5%
2,591	2,607	0.6	3,056	3,203	4.8	68%	50%		9,916	9,208	-7.1	66,492	71,376	7.3	10.2%	10.8%

<sup>1</sup>In some cases the Michigan number is slightly different from the county total.

<sup>2</sup> Population figures based on U.S. Census Bureau county estimates from July of the previous year

\*Data is unavailable or cannot be calculated.

Data sources: Unemployment: Bureau of Labor Statistics, Local Area Unemployment Statistics; Public Assistance: Michigan Department of Human Services.

 Prepared by: Michigan League for Human Services	Unemployment (data not seasonally adjusted)						Food Assistance Program					
	Unemployment Rate			Number Unemployed			Total Number of Applications			Average Number of Households Receiving Food Assistance Per Month		
	Qtr 3 2006	Qtr 3 2007	+/- points	Qtr 3 2006	Qtr 3 2007	% change	Qtr 3 2006	Qtr 3 2007	% change	Qtr 3 2006	Qtr 3 2007	% change
Manistee	7.7	7.2	-0.5	997	917	-8.1	375	419	11.7	1,436	1,517	5.6
Marquette	5.6	5.7	0.1	2,021	2,054	1.6	739	682	-7.7	2,843	3,011	5.9
Mason	7.1	6.6	-0.5	1,116	1,022	-8.4	388	421	8.5	1,652	1,783	8.0
Mecosta	7.4	7.3	-0.1	1,492	1,453	-2.6	947	1,117	18.0	2,970	3,334	12.2
Menominee	6.2	5.7	-0.5	840	761	-9.4	272	281	3.3	1,118	1,182	5.8
Midland	5.5	5.7	0.2	2,335	2,406	3.0	948	961	1.4	3,552	3,778	6.4
Missaukee	7.1	7.7	0.6	491	523	6.4	151	187	23.8	678	739	8.9
Monroe	7.4	7.0	-0.4	5,811	5,382	-7.4	1,507	1,609	6.8	5,027	5,427	8.0
Montcalm	13.8	11.1	-2.7	3,997	3,081	-22.9	914	903	-1.2	3,332	3,660	9.8
Montmorency	9.9	10.8	0.9	450	476	5.9	160	113	-29.4	691	754	9.0
Muskegon	7.1	7.5	0.3	6,610	6,825	3.3	3,766	4,073	8.2	14,303	15,689	9.7
Newaygo	7.1	7.8	0.7	1,692	1,842	8.9	634	795	25.4	2,689	2,870	6.7
Oakland	5.9	6.5	0.6	37,643	41,204	9.5	11,565	11,154	-3.6	29,563	32,528	10.0
Oceana	7.1	6.8	-0.3	1,126	1,057	-6.2	521	536	2.9	1,920	1,891	-1.5
Ogemaw	7.0	7.3	0.3	719	734	2.1	294	340	15.6	1,855	2,035	9.7
Ontonagon	7.0	7.2	0.3	256	262	2.6	68	69	1.5	384	406	5.8
Osceola	7.5	8.0	0.5	782	802	2.6	304	292	-3.9	1,394	1,489	6.8
Oscoda	10.1	9.1	-1.0	432	391	-9.6	153	176	15.0	657	731	11.3
Otsego	8.0	8.2	0.2	1,053	1,064	1.0	321	389	21.2	1,283	1,476	15.0
Ottawa	5.4	5.7	0.3	7,528	7,816	3.8	1,958	2,221	13.4	5,665	6,004	6.0
Presque Isle	9.2	9.8	0.5	608	624	2.5	148	120	-18.9	568	615	8.3
Roscommon	8.1	8.1	0.0	924	912	-1.3	394	411	4.3	1,957	2,111	7.9
Saginaw	7.7	7.4	-0.3	7,641	7,079	-7.4	4,352	4,260	-2.1	15,714	16,227	3.3
Saint Clair	8.1	9.1	1.0	6,832	7,729	13.1	2,574	2,699	4.9	8,423	9,275	10.1
Saint Joseph	7.2	6.2	-1.0	2,318	1,960	-15.4	1,053	1,095	4.0	3,263	3,374	3.4
Sanilac	8.2	8.3	0.1	1,925	1,917	-0.4	577	586	1.6	2,488	2,735	9.9
Schoolcraft	8.0	8.4	0.4	345	358	3.7	98	90	-8.2	525	542	3.3
Shiawassee	8.4	8.2	-0.2	3,140	3,006	-4.3	1,097	1,043	-4.9	3,537	3,785	7.0
Tuscola	8.4	8.3	-0.1	2,489	2,361	-5.1	656	654	-0.3	2,592	2,764	6.6
Van Buren	6.3	6.2	-0.1	2,586	2,540	-1.8	1,787	1,828	2.3	4,914	5,056	2.9
Washtenaw	5.0	5.2	0.3	9,386	9,730	3.7	3,864	4,243	9.8	10,511	12,138	15.5
Wayne	9.0	9.4	0.3	81,483	83,802	2.8	49,320	48,091	-2.5	167,213	169,188	1.2
Wexford	8.6	8.4	-0.2	1,319	1,265	-4.1	661	655	-0.9	2,304	2,554	10.9

FACT

Low-income tax filers should avoid using paid tax services and taking out rapid anticipation loans for a quick refund on their taxes. Instead, they can file online for free using the ICAN! EIC program at [www.michiganeic.org](http://www.michiganeic.org), or they can call 2-1-1 (or 1-800-552-1183) to find out about free tax preparation services in their communities

<sup>1</sup>In some cases the Michigan number is slightly different from the county total.

Data sources: Unemployment: Bureau of Labor Statistics, Local Area Unemployment Statistics; Public Assistance: Michigan Department of Human Services.

Family Independence Program (Cash Assistance)									Medicaid							
Total Number of Applications			Average Number of Families Receiving Cash Assistance Per Month			Percent of Cases Without Earned Income, Out of Total Cases Expected to Work			Total Number of Applications			Average Number of Persons Eligible for Medicaid ONLY (Excludes FIP & SSI Recipients)			Percent of Population Eligible for Medicaid (Includes FIP & SSI Recipients) <sup>2</sup>	
Qtr 3 2006	Qtr 3 2007	% change	Qtr 3 2006	Qtr 3 2007	% change	Qtr 3 2006	Qtr 3 2007		Qtr 3 2006	Qtr 3 2007	% change	Qtr 3 2006	Qtr 3 2007	% change	Qtr 3 2006	Qtr 3 2007
138	143	3.6	133	127	-4.0	70%	40%		461	457	-0.9	3,157	3,149	-0.2	16.0%	16.1%
179	127	-29.1	274	218	-20.4	67%	51%		1,230	874	-28.9	6,458	6,770	4.8	12.5%	12.9%
144	158	9.7	182	209	14.7	41%	27%		652	572	-12.3	4,118	3,980	-3.3	18.0%	17.7%
221	194	-12.2	267	208	-21.9	67%	44%		1,086	855	-21.3	5,609	5,822	3.8	17.1%	17.4%
80	85	6.3	73	74	1.4	48%	31%		476	441	-7.4	2,944	2,940	-0.1	14.0%	14.2%
303	307	1.3	353	384	8.7	52%	34%		1,277	1,114	-12.8	8,300	8,635	4.0	12.5%	13.1%
50	74	48.0	65	60	-8.2	*	*		283	274	-3.2	1,936	1,932	-0.2	15.2%	15.0%
590	562	-4.7	689	708	2.7	65%	39%		2,094	1,877	-10.4	12,255	12,458	1.7	10.4%	10.5%
340	334	-1.8	361	325	-10.0	69%	52%		1,428	1,272	-10.9	8,417	8,786	4.4	16.8%	17.3%
58	38	-34.5	52	46	-12.1	56%	6%		292	227	-22.3	1,563	1,618	3.6	18.7%	19.2%
1,521	1,395	-8.3	2,813	3,022	7.5	67%	60%		4,317	3,888	-9.9	22,973	23,334	1.6	20.6%	21.1%
227	235	3.5	279	301	7.6	72%	36%		1,161	1,059	-8.8	7,160	7,038	-1.7	18.1%	18.1%
3,268	3,204	-2.0	3,581	4,105	14.6	74%	47%		11,510	11,422	-0.8	70,514	72,326	2.6	7.8%	8.1%
204	135	-33.8	296	319	7.7	60%	40%		840	728	-13.3	5,335	5,276	-1.1	23.9%	23.9%
129	119	-7.8	166	203	22.1	64%	32%		486	529	8.8	3,793	3,779	-0.4	22.4%	23.0%
34	27	-20.6	38	24	-38.3	20%	13%		171	130	-24.0	931	977	4.9	16.0%	16.7%
121	110	-9.1	161	124	-23.2	*	*		529	424	-19.8	3,220	3,242	0.7	17.8%	17.8%
47	63	34.0	65	60	-7.7	25%	9%		282	278	-1.4	1,428	1,448	1.4	20.1%	20.4%
127	122	-3.9	85	123	45.1	44%	40%		507	465	-8.3	3,686	3,865	4.9	17.5%	18.5%
554	527	-4.9	513	498	-3.0	75%	34%		2,850	2,647	-7.1	18,491	19,311	4.4	8.5%	8.8%
52	50	-3.8	49	37	-23.8	67%	31%		274	190	-30.7	1,532	1,588	3.7	13.4%	13.7%
120	150	25.0	180	153	-15.0	56%	27%		531	566	6.6	3,934	3,998	1.6	19.3%	19.5%
1,559	1,538	-1.3	3,054	2,665	-12.7	52%	48%		4,880	4,401	-9.8	24,694	25,574	3.6	19.1%	19.4%
863	852	-1.3	1,167	1,227	5.1	67%	48%		3,427	3,229	-5.8	17,914	18,657	4.1	13.8%	14.3%
397	376	-5.3	385	392	1.7	63%	42%		1,465	1,376	-6.1	8,931	9,148	2.4	17.5%	18.0%
186	195	4.8	247	175	-29.1	58%	55%		925	854	-7.7	6,336	6,773	6.9	17.2%	18.0%
44	34	-22.7	50	47	-5.4	60%	37%		180	147	-18.3	1,302	1,303	0.1	19.0%	19.0%
427	367	-14.1	346	377	9.0	54%	44%		1,582	1,228	-22.4	8,730	8,874	1.6	14.9%	15.2%
222	155	-30.2	268	303	12.8	57%	39%		1,083	973	-10.2	7,463	7,541	1.1	15.9%	16.3%
480	453	-5.6	554	616	11.1	59%	38%		2,339	2,292	-2.0	12,530	12,304	-1.8	20.1%	19.9%
1,046	1,032	-1.3	1,404	1,408	0.3	65%	50%		4,270	3,822	-10.5	20,109	21,601	7.4	8.1%	8.5%
14,560	13,888	-4.6	35,858	35,244	-1.7	72%	68%		43,911	42,354	-3.5	254,197	259,895	2.2	21.5%	22.0%
243	240	-1.2	278	276	-0.6	68%	43%		980	834	-14.9	5,320	5,480	3.0	21.6%	22.0%

FACT

Low- and middle-income taxpayers should remember to file for the earned income and child tax credits when they do their taxes. In Tax Year 2005, 663,336 Michigan residents got a refund through the federal earned income credit.

<sup>1</sup>In some cases the Michigan number is slightly different from the county total.

<sup>2</sup> Population figures based on U.S. Census Bureau county estimates from July of the previous year

\*Data is unavailable or cannot be calculated.

Data sources: Unemployment: Bureau of Labor Statistics, Local Area Unemployment Statistics; Public Assistance: Michigan Department of Human Services.

Employment Trends by Selected Industries in Michigan  
(data not seasonally adjusted, rounded to the nearest hundred)

Industry	Avg 2006 Qtr 3	Avg 2007 Qtr 3	% Change	Industry	Avg 2006 Qtr 3	Avg 2007 Qtr 3	% Change
<b>TOTAL NONFARM</b>	<b>4,322,000</b>	<b>4,257,500</b>	<b>-1.5</b>	Wholesale Electronic Markets and Agents and Brokers	24,400	24,600	0.8
<b>TOTAL PRIVATE</b>	<b>3,698,100</b>	<b>3,649,200</b>	<b>-1.3</b>	<b>•Retail Trade</b>	<b>495,800</b>	<b>485,000</b>	<b>-2.2</b>
<b>GOODS PRODUCING</b>	<b>838,700</b>	<b>800,600</b>	<b>-4.5</b>	Motor Vehicle and Parts Dealers	59,000	56,200	-4.7
<b>SERVICE-PROVIDING</b>	<b>3,483,300</b>	<b>3,456,900</b>	<b>-0.8</b>	Furniture and Home Furnishings	17,500	16,700	-4.6
<b>Natural Resources and Mining</b>	<b>8,400</b>	<b>8,300</b>	<b>-1.2</b>	Electronics and Appliance	17,300	17,000	-1.7
Mining	6,900	6,600	-4.3	Building Material and Garden Equip. and Supplies Dealers	46,000	43,400	-5.7
<b>Construction</b>	<b>194,100</b>	<b>177,100</b>	<b>-8.8</b>	Food and Beverage Stores	83,400	81,200	-2.6
Construction of Buildings	45,700	43,100	-5.7	Health and Personal Care	33,500	33,400	-0.3
Heavy and Civil Engineering	20,700	19,100	-7.7	Gasoline Stations	25,700	25,100	-2.3
Specialty Trade Contractors	127,700	114,900	-10.0	Clothing and Clothing Accessories	40,200	40,000	-0.5
<b>Manufacturing</b>	<b>636,200</b>	<b>615,300</b>	<b>-3.3</b>	Sporting Goods, Hobby, Book, and Music Stores	23,300	23,000	-1.3
<b>•Durable Goods</b>	<b>488,600</b>	<b>471,500</b>	<b>-3.5</b>	General Merchandise Stores	109,600	106,600	-2.7
Primary Metal Manufacturing	25,800	24,400	-5.4	Miscellaneous Store Retail	27,900	27,100	-2.9
Fabricated Metal Product	84,200	83,000	-1.4	<b>•Transportation &amp; Warehousing</b>	<b>128,200</b>	<b>126,500</b>	<b>-1.3</b>
Machinery Manufacturing	73,900	72,400	-2.0	Air Transportation	14,000	13,000	-7.1
Computer and Electronic Products	21,300	21,500	0.9	Rail Transportation	4,700	4,500	-4.3
Motor Vehicle Manufacturing	52,900	48,700	-7.9	Truck Transportation	39,200	40,200	2.6
Motor Vehicle Parts Manufacturing	138,100	125,000	-9.5	Warehousing and Storage	14,800	13,900	-6.1
Furniture and Related Products	25,200	24,800	-1.6	<b>Information</b>	<b>66,700</b>	<b>66,100</b>	<b>-0.9</b>
Miscellaneous Manufacturing	18,100	18,000	-0.6	Publishing Industries	23,400	22,700	-3.0
<b>•Non-Durable Goods</b>	<b>147,600</b>	<b>143,700</b>	<b>-2.6</b>	Telecommunications	21,600	21,600	-0.0
Food Manufacturing	34,400	33,800	-1.7	<b>Financial Activities</b>	<b>217,700</b>	<b>213,600</b>	<b>-1.9</b>
Printing and Related Support Activities	17,400	16,700	-4.0	Finance and Insurance	161,700	159,900	-1.1
Chemical Manufacturing	28,700	27,800	-3.1	Real Estate	38,600	37,500	-2.8
Plastics and Rubber Products	41,300	40,000	-3.1	<b>Professional &amp; Business Services</b>	<b>594,400</b>	<b>592,900</b>	<b>-0.3</b>
<b>Trade Transportation &amp; Utilities</b>	<b>796,100</b>	<b>782,200</b>	<b>-1.7</b>	Legal Services	29,300	29,200	-0.3
<b>•Wholesale Trade</b>	<b>172,100</b>	<b>170,800</b>	<b>-0.8</b>	Accounting, Tax Preparation, Bookkeeping & Payroll Services	25,900	26,700	3.1
Merchant Wholesalers Durable Goods	98,800	98,500	-0.3	Architectural Engineering	67,700	66,600	-1.6
Merchant Wholesalers Nondurable Goods	49,000	47,700	-2.7				

Note: Industry details and subtotals may not sum to totals due to rounding.

Source: Department of Labor and Economic Growth/Office of Labor Market Information, Current Employment Statistics Section - (800) 225-3732

Employment Trends by Selected Industries in Michigan  
(data not seasonally adjusted, rounded to the nearest hundred)

Industry	Avg 2006 Qtr 3	Avg 2007 Qtr 3	% Change	Industry	Avg 2006 Qtr 3	Avg 2007 Qtr 3	% Change
Computer Systems Design	39,300	39,400	0.3	<b>Other Services</b>	<b>179,000</b>	<b>177,500</b>	<b>-0.8</b>
Management, Scientific and Technical Consulting Services	19,500	19,800	1.5	Repair and Maintenance	39,700	38,700	-2.5
Scientific Research and Development Services	24,200	24,800	2.5	Personal and Laundry Services	40,200	39,000	-3.0
Advertising and Related	15,100	15,000	-0.7	Religious Grantmaking Civic Professional	99,100	99,800	0.7
Other Professional Scientific and Technical Services	15,700	16,200	3.2	<b>Government</b>	<b>623,900</b>	<b>608,400</b>	<b>-2.5</b>
Management of Companies	62,500	61,700	-1.3	• <b>Federal Government</b>	<b>54,200</b>	<b>53,500</b>	<b>-1.3</b>
Administrative & Support Services	286,900	287,200	0.1	U.S. Postal Service	27,100	26,500	-2.2
<b>Educational and Health Services</b>	<b>577,000</b>	<b>586,600</b>	<b>1.7</b>	• <b>State Government</b>	<b>63,600</b>	<b>165,100</b>	<b>0.9</b>
• <b>Educational Services</b> (see also <b>Government</b> )	<b>69,400</b>	<b>71,000</b>	<b>2.3</b>	State Government Educational Services	90,700	92,300	1.8
• <b>Health Care &amp; Social Assistance</b>	<b>507,600</b>	<b>515,500</b>	<b>1.6</b>	State Government Hospital Services	15,200	16,200	6.6
Ambulatory Health Care Services	172,600	176,600	2.3	• <b>Local Government</b>	<b>406,000</b>	<b>389,700</b>	<b>-4.0</b>
Offices of Physicians	69,300	70,800	2.2	Local Government Educational Services	215,700	203,400	-5.7
Offices of Dentists	31,800	31,900	0.3	Local Government Hospitals	13,000	13,100	0.8
Offices of Other Health Professionals	19,900	20,100	1.0	Local Government Elementary and Secondary Schools	196,200	185,000	-5.7
Outpatient Care Centers	14,300	14,800	3.5	Local Government Junior Colleges	18,700	18,900	1.1
Home Health Care Service	26,900	28,300	5.2				
Hospitals	184,200	186,500	1.2				
Nursing and Residential Care	92,500	93,500	1.1				
—Nursing Care Facilities	43,000	43,600	1.4				
Social Assistance	58,300	59,000	1.2				
—Individual and Family Services	24,900	25,600	2.8				
<b>Leisure and Hospitality</b>	<b>428,500</b>	<b>429,600</b>	<b>0.3</b>				
Performing Arts Spectator Activities	9,700	9,100	-6.2				
Amusement, Gambling & Recreation	57,800	57,400	-0.7				
Accommodation	39,200	39,200	0.0				
Food Services and Drinking	317,800	319,500	0.5				

**VISIT OUR WEBSITE FOR MORE INFORMATION!**

The "Work and Wages" section of the Michigan League for Human Services website has information on Workforce Development, Work Supports, Unemployment, and Self-Sufficiency. It also includes back issues of the Economic Security Bulletin. Go to <http://www.MiLHS.org> and click the "Work and Wages" tab at the right.

Note: Industry details and subtotals may not sum to totals due to rounding.

Source: Department of Labor and Economic Growth/Office of Labor Market Information, Current Employment Statistics Section - (800) 225-3732



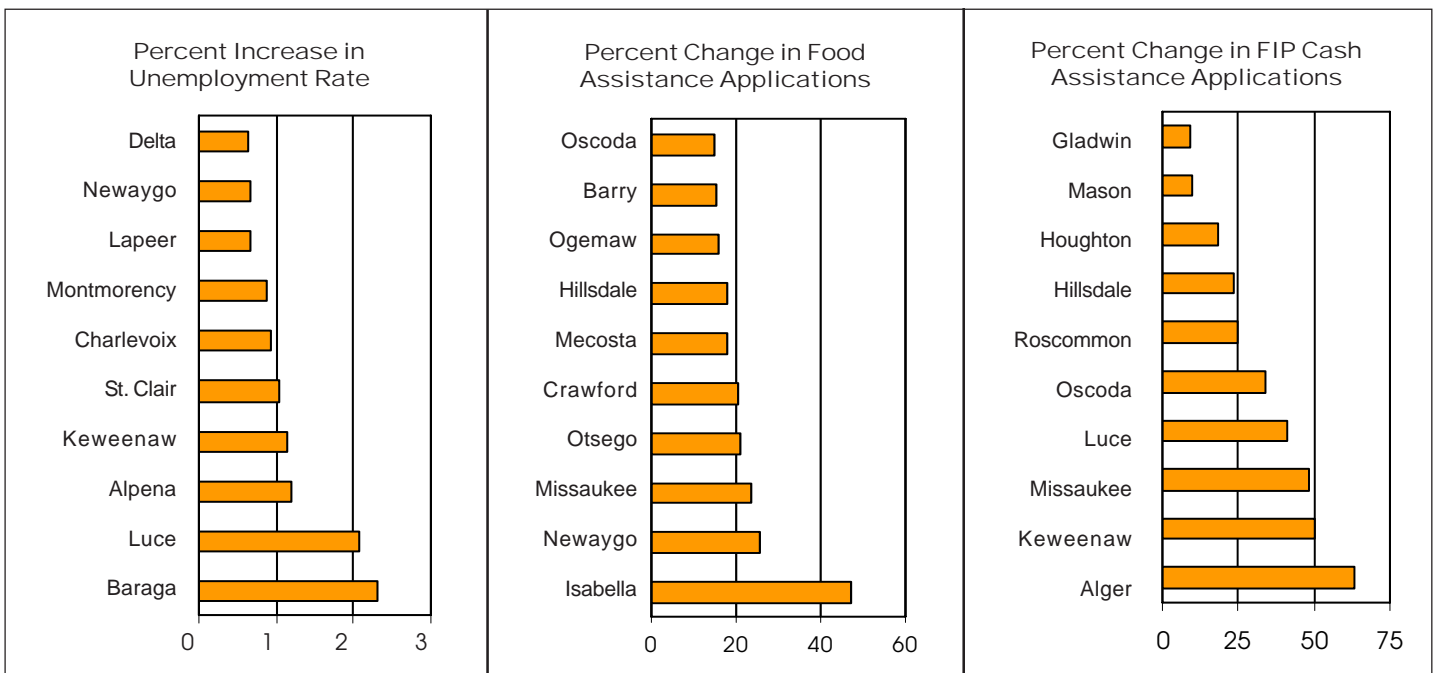
**Michigan League for Human Services**

1115 South Pennsylvania Avenue, Suite 202  
 Lansing, MI 48912-1658  
 (517) 487-5436 — Fax (517) 371-4546  
 Web site: www.milhs.org

*A United Way Agency*

Nonprofit  
 Organization  
 U.S. Postage  
**Paid**  
 Lansing, MI  
 Permit #1421

Percentage Change in Michigan Counties With Largest Increases  
 Third Quarter 2006 — Third Quarter 2007



Sources: Unemployment: Bureau of Labor Statistics, Local Area Unemployment Statistics; Public Assistance: Michigan Department of Human Services