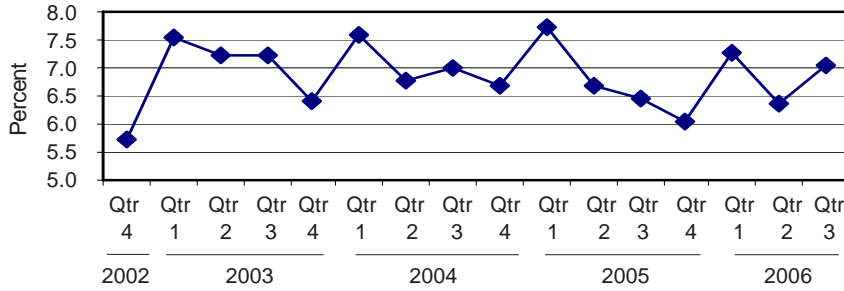




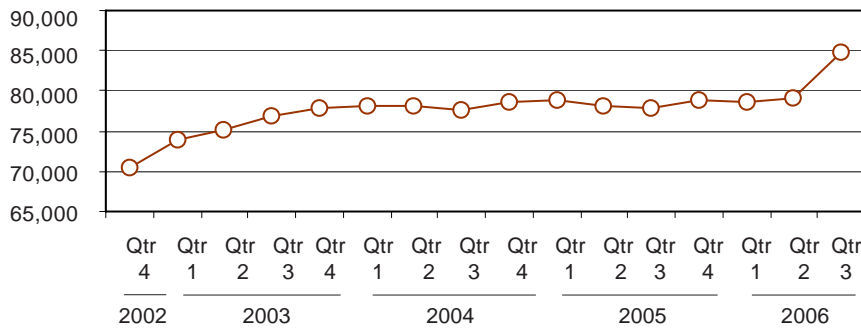
Michigan's Unemployment Rate
Over the Past Four Years
(not seasonally adjusted)



Source: Bureau of Labor Statistics



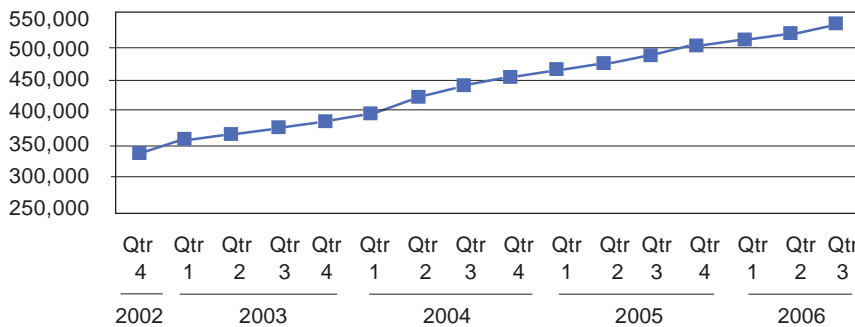
Family Independence Cases in Michigan
Over the Past Four Years



Source: Michigan Department of Human Services



Food Assistance Households Over the Past Four Years



Source: Michigan Department of Human Services

Michigan Unemployment Up From Same Time Last Year

Unemployment


During the third quarter of 2006, statewide unemployment was up from a year before, from 6.5 percent to 7 percent. Nine Michigan counties (Alcona, Clare, Gladwin, Ionia, Lake, Montcalm, Montmorency, Oscoda, and Presque Isle) had unemployment over 9 percent during the quarter, while only one county (Eaton) saw a decrease.

Public Assistance

Family Independence Program caseloads spiked sharply during the third quarter, from 79,204 during the previous quarter to 84,760. This differs greatly from recent trends—during the previous two years, the third quarter saw a decrease in FIP cases from the previous quarter—and also brings FIP cases to their highest level in many years. The Food Assistance caseload also continues to rise; during the third quarter it stood at 532,349, a 113 percent increase over the caseload during the third quarter of 2000.

Sectoral Trends

Employment losses of more than 10 percent occurred in the motor vehicle and electrical appliance manufacturing industries, while accounting and tax preparation was the only industry to see any significant gain during the third quarter of 2006. There was a decrease in overall nonfarm jobs from the third quarter of 2005 and that of 2006.

 Prepared by: Michigan League for Human Services	Unemployment (data not seasonally adjusted)						Food Assistance Program					
	Unemployment Rate			Number Unemployed			Total Number of Applications			Average Number of Households Receiving Food Assistance Per Month		
	Qtr 3 2005	Qtr 3 2006	% change	Qtr 3 2005	Qtr 3 2006	% change	Qtr 3 2005	Qtr 3 2006	% change	Qtr 3 2005	Qtr 3 2006	% change
Michigan¹	6.5	7.0	8.8	333,422	360,144	8.0	149,700	163,072	8.9	485,696	532,349	9.6
Alcona	8.9	9.3	4.5	392	415	6.0	101	135	33.7	488	545	11.8
Alger	6.0	6.7	10.5	278	312	12.0	69	85	23.2	289	303	4.7
Allegan	5.6	6.1	8.3	3,122	3,405	9.1	1,351	1,341	-0.7	3,688	3,963	7.4
Alpena	6.3	7.0	11.1	948	1,057	11.4	496	553	11.5	2,007	2,147	7.0
Antrim	6.0	6.3	6.1	772	841	8.9	277	311	12.3	764	872	14.0
Arenac	7.1	8.7	23.1	588	701	19.2	225	247	9.8	1,067	1,175	10.1
Baraga	9.2	9.8	6.1	396	431	8.8	130	174	33.8	433	443	2.2
Barry	4.5	5.2	14.7	1,405	1,651	17.5	661	631	-4.5	2,023	2,243	10.9
Bay	6.2	6.8	9.6	3,544	3,878	9.4	1,358	1,499	10.4	6,068	6,660	9.8
Benzie	5.7	6.0	5.3	543	578	6.4	227	264	16.3	537	650	21.0
Berrien	6.4	7.2	13.0	5,196	5,864	12.9	3,090	3,026	-2.1	9,319	9,945	6.7
Branch	6.7	7.6	13.4	1,559	1,806	15.9	739	728	-1.5	1,909	2,126	11.4
Calhoun	6.3	7.2	13.8	4,602	5,290	14.9	2,727	2,883	5.7	9,037	10,063	11.4
Cass	4.7	5.4	13.4	1,317	1,524	15.7	765	728	-4.8	2,501	2,566	2.6
Charlevoix	5.8	6.2	7.5	876	956	9.2	189	272	43.9	678	761	12.3
Cheboygan	4.3	5.2	21.1	618	746	20.7	379	392	3.4	1,357	1,422	4.8
Chippewa	6.5	7.1	8.2	1,187	1,312	10.5	470	518	10.2	1,557	1,679	7.9
Clare	8.6	10.0	16.3	1,170	1,385	18.4	567	578	1.9	2,371	2,684	13.2
Clinton	5.1	5.3	4.6	1,895	1,994	5.3	505	568	12.5	1,441	1,703	18.1
Crawford	5.7	6.7	17.6	399	480	20.3	243	258	6.2	758	855	12.8
Delta	6.0	6.1	1.7	1,261	1,313	4.2	514	484	-5.8	1,967	2,059	4.7
Dickinson	4.8	5.3	9.7	714	785	9.9	343	346	0.9	976	1,076	10.2
Eaton	5.2	5.2	-0.6	3,092	3,055	-1.2	1,117	1,390	24.4	3,296	3,675	11.5
Emmet	5.1	5.9	14.9	1,108	1,291	16.5	369	392	6.2	1,147	1,296	13.0
Genesee	7.7	8.8	14.3	16,440	18,861	14.7	9,290	10,673	14.9	32,023	34,897	9.0
Gladwin	8.8	9.0	1.9	975	1,028	5.4	340	360	5.9	1,526	1,678	10.0
Gogebic	6.7	6.9	4.0	532	551	3.5	221	311	40.7	993	1,062	7.0
Gr. Traverse	4.7	5.2	9.9	2,401	2,688	12.0	1,175	1,273	8.3	2,895	3,433	18.6
Gratiot	7.5	8.5	13.8	1,522	1,763	15.8	563	581	3.2	1,807	2,061	14.1
Hillsdale	7.2	8.2	13.8	1,649	1,901	15.2	540	528	-2.2	1,861	2,072	11.3
Houghton	5.1	5.9	16.4	897	1,069	19.1	410	417	1.7	1,573	1,695	7.8
Huron	7.0	8.2	16.1	1,240	1,464	18.1	288	276	-4.2	1,513	1,687	11.5
Ingham	6.4	6.7	5.2	9,861	10,406	5.5	4,851	4,932	1.7	14,902	16,313	9.5
Ionia	6.8	9.0	31.9	2,136	2,898	35.7	778	845	8.6	2,528	2,853	12.8
Iosco	7.3	8.4	14.6	808	951	17.7	385	423	9.9	1,749	1,891	8.1
Iron	5.5	6.1	10.3	330	369	12.0	128	156	21.9	584	576	-1.3
Isabella	4.2	4.6	11.2	1,613	1,806	12.0	854	1,282	50.1	2,607	3,156	21.1
Jackson	6.4	7.6	18.8	5,114	6,059	18.5	2,560	2,905	13.5	7,477	8,095	8.3
Kalamazoo	5.0	5.6	11.9	6,742	7,540	11.8	3,774	4,063	7.7	12,432	13,972	12.4
Kalkaska	6.2	7.3	16.6	586	695	18.7	302	350	15.9	901	994	10.3
Kent	5.6	6.0	8.4	18,281	19,911	8.9	9,216	10,198	10.7	27,330	29,623	8.4
Keweenaw	7.3	7.6	5.0	77	82	7.4	22	19	-13.6	77	83	7.3
Lake	8.0	9.0	11.6	367	414	12.9	256	245	-4.3	1,088	1,118	2.8
Lapeer	6.5	6.8	4.6	2,938	3,039	3.4	696	910	30.7	2,214	2,549	15.1
Leelanau	3.7	3.9	4.5	460	487	5.9	159	154	-3.1	317	370	16.5

¹In some cases the Michigan number is slightly different from the county total.

Data sources: Unemployment: Bureau of Labor Statistics, Local Area Unemployment Statistics; Public Assistance: Michigan Department of Human Services.


Family Independence Program (Cash Assistance)

Total Number of Applications			Average Number of Families Receiving Cash Assistance Per Month			Application Approvals: Unemployment Benefits Exhausted, Layoff or Discharge, Depleted Savings, Non-Exempt Property or Loss of Other Resources			Total Number of Denials		Income Exceeds Standards as Percent of Denials		Percent of Cases Without Earned Income, Out of Total Cases Expected to Work	
Qtr 3 2005	Qtr 3 2006	% change	Qtr 3 2005	Qtr 3 2006	% change	Qtr 3 2005	Qtr 3 2006	% change	Qtr 3 2005	Qtr 3 2006	Qtr 3 2005	Qtr 3 2006	Qtr 3 2005	Qtr 3 2006
50,615	51,717	2.2	77,836	84,760	8.9	2,116	2,976	40.6	22,119	18,297	44.6	59.1	66%	69%
31	44	41.9	40	42	5.0	0	0	0	10	12	50.0	75.0	27%	42%
21	19	-9.5	22	23	7.7	2	0	-100.0	10	7	50.0	85.7	0%	0%
511	452	-11.5	378	415	9.7	23	35	52.2	259	170	53.3	60.6	62%	54%
150	171	14.0	164	192	17.1	13	31	138.5	72	61	55.6	67.2	26%	41%
106	95	-10.4	61	59	-2.7	1	1	0.0	59	46	74.6	71.7	20%	47%
76	92	21.1	88	103	17.0	7	17	142.9	31	36	58.1	72.2	39%	52%
36	40	11.1	56	49	-13.6	0	0	0	9	12	44.4	50.0	25%	42%
216	241	11.6	220	254	15.5	14	24	71.4	93	83	52.7	65.1	48%	47%
547	549	0.4	758	863	13.9	38	46	21.1	195	142	46.7	62.0	49%	52%
83	78	-6.0	44	39	-12.8	12	1	-91.7	43	35	65.1	68.6	49%	43%
1,065	1,125	5.6	1,224	1,441	17.7	36	64	77.8	505	403	43.6	52.4	51%	58%
346	318	-8.1	221	283	28.1	29	50	72.4	186	117	42.5	65.8	50%	60%
1,115	1,107	-0.7	1,480	1,665	12.5	66	79	19.7	490	406	48.6	57.1	65%	71%
248	277	11.7	309	290	-5.9	8	22	175.0	120	87	54.2	64.4	66%	54%
71	97	36.6	44	52	19.1	2	11	450.0	32	38	53.1	60.5	*	*
150	135	-10.0	103	132	27.4	6	17	183.3	65	37	63.1	75.7	55%	76%
154	158	2.6	151	161	6.8	13	33	153.8	59	61	57.6	63.9	69%	49%
241	222	-7.9	284	304	7.2	9	15	66.7	121	102	49.6	44.1	54%	68%
165	180	9.1	111	142	28.0	8	7	-12.5	90	95	55.6	61.1	53%	69%
101	115	13.9	81	85	4.1	6	17	183.3	53	47	50.9	51.1	35%	44%
154	141	-8.4	147	153	4.1	5	2	-60.0	72	54	41.7	53.7	63%	56%
111	104	-6.3	69	68	-1.4	18	11	-38.9	43	41	53.5	78.0	69%	43%
411	420	2.2	369	407	10.3	10	5	-50.0	190	169	48.9	60.9	50%	57%
99	127	28.3	58	63	8.6	3	10	233.3	47	53	40.4	60.4	0%	63%
3,777	3,803	0.7	6,675	7,156	7.2	171	288	68.4	1,683	1,293	40.6	55.6	60%	67%
137	150	9.5	151	184	22.3	2	21	950.0	67	58	53.7	67.2	59%	47%
68	96	41.2	156	179	14.8	3	7	133.3	14	28	35.7	57.1	72%	72%
323	336	4.0	144	182	26.1	10	17	70.0	177	189	61.0	80.4	67%	64%
252	271	7.5	254	322	26.8	15	12	-20.0	148	131	54.1	61.1	57%	61%
248	197	-20.6	171	200	17.0	18	16	-11.1	107	58	54.2	53.4	73%	63%
68	66	-2.9	95	111	16.9	7	13	85.7	24	14	70.8	78.6	33%	58%
85	90	5.9	113	130	15.4	20	28	40.0	27	23	74.1	73.9	56%	63%
1,592	1,493	-6.2	1,785	2,060	15.4	54	65	20.4	761	531	44.5	61.2	59%	66%
346	355	2.6	221	289	30.9	8	10	25.0	170	123	51.8	55.3	54%	52%
117	149	27.4	122	143	17.5	1	2	100.0	50	54	56.0	59.3	40%	39%
54	62	14.8	65	63	-2.1	2	4	100.0	17	24	52.9	58.3	75%	34%
298	305	2.3	301	341	13.2	1	3	200.0	150	119	57.3	69.7	65%	61%
922	870	-5.6	1,052	1,080	2.7	38	66	73.7	454	368	39.0	50.3	68%	67%
1,441	1,333	-7.5	1,723	2,018	17.1	64	74	15.6	566	405	37.5	60.5	63%	67%
117	109	-6.8	62	87	39.6	16	22	37.5	52	39	48.1	64.1	20%	29%
3,129	3,204	2.4	4,329	4,520	4.4	154	175	13.6	1,431	1,212	48.2	63.1	48%	53%
5	2	-60.0	5	4	-14.3	0	0	0	2	0	*	*	0%	0%
104	92	-11.5	130	126	-2.8	10	20	100.0	31	12	41.9	41.7	71%	60%
267	334	25.1	263	265	1.0	8	13	62.5	124	162	50.8	64.2	74%	72%
42	36	-14.3	24	21	-12.5	0	0	0	25	23	56.0	73.9	*	*

¹In some cases the Michigan number is slightly different from the county total.

*Data is unavailable or cannot be calculated.

Data sources: Unemployment: Bureau of Labor Statistics, Local Area Unemployment Statistics; Public Assistance: Michigan Department of Human Services.

 Prepared by: Michigan League for Human Services	Unemployment (data not seasonally adjusted)						Food Assistance Program					
	Unemployment Rate			Number Unemployed			Total Number of Applications			Average Number of Households Receiving Food Assistance Per Month		
	Qtr 3 2005	Qtr 3 2006	% change	Qtr 3 2005	Qtr 3 2006	% change	Qtr 3 2005	Qtr 3 2006	% change	Qtr 3 2005	Qtr 3 2006	% change
Lenawee	7.0	7.6	9.6	3,512	3,899	11.0	1,244	1,400	12.5	3,376	3,748	11.0
Livingston	4.7	4.8	2.1	4,462	4,510	1.1	938	1,088	16.0	2,173	2,535	16.6
Luce	6.2	6.8	8.6	183	199	8.7	71	96	35.2	352	389	10.6
Mackinac	3.1	3.3	6.4	254	273	7.6	99	120	21.2	344	351	2.0
Macomb	6.6	7.3	10.6	28,353	31,033	9.5	7,924	9,098	14.8	23,991	27,214	13.4
Manistee	6.6	7.9	20.3	815	985	20.9	358	375	4.7	1,372	1,436	4.7
Marquette	4.7	5.4	15.6	1,685	1,976	17.3	720	739	2.6	2,621	2,843	8.5
Mason	5.9	6.8	15.3	946	1,101	16.5	428	388	-9.3	1,541	1,652	7.2
Mecosta	6.2	7.1	15.1	1,218	1,417	16.4	704	947	34.5	2,580	2,970	15.1
Menominee	4.9	6.1	23.8	680	849	24.7	292	272	-6.8	1,073	1,118	4.2
Midland	5.3	5.7	6.3	2,217	2,369	6.9	840	948	12.9	3,284	3,552	8.2
Missaukee	5.7	6.9	20.9	395	483	22.2	177	151	-14.7	648	678	4.6
Monroe	6.3	7.4	17.6	4,913	5,814	18.3	1,509	1,507	-0.1	4,526	5,027	11.1
Montcalm	7.8	13.7	75.3	2,334	4,016	72.1	854	914	7.0	2,892	3,332	15.2
Montmorency	8.8	9.9	13.3	381	437	14.6	156	160	2.6	600	691	15.2
Muskegon	6.5	7.2	10.8	6,022	6,674	10.8	3,579	3,766	5.2	13,201	14,303	8.3
Newaygo	6.5	7.0	8.2	1,536	1,682	9.5	680	634	-6.8	2,464	2,689	9.1
Oakland	5.5	5.7	3.0	35,273	36,291	2.9	10,767	11,565	7.4	26,182	29,563	12.9
Oceana	6.3	7.2	14.3	973	1,121	15.3	515	521	1.2	1,810	1,920	6.1
Ogemaw	5.6	6.9	22.6	567	705	24.5	369	294	-20.3	1,738	1,855	6.7
Ononagon	5.5	6.8	22.3	206	251	21.8	72	68	-5.6	361	384	6.4
Osceola	6.5	7.4	13.8	681	787	15.5	296	304	2.7	1,417	1,394	-1.6
Oscoda	8.8	10.3	17.0	364	427	17.4	130	153	17.7	617	657	6.5
Otsego	5.8	7.7	32.8	786	1,050	33.5	315	321	1.9	1,110	1,283	15.6
Ottawa	4.7	5.3	12.0	6,504	7,407	13.9	1,877	1,958	4.3	5,223	5,665	8.5
Presque Isle	7.4	9.1	24.0	481	593	23.3	119	148	24.4	537	568	5.7
Roscommon	6.5	7.4	14.4	757	886	17.0	340	394	15.9	1,813	1,957	7.9
Saginaw	7.3	7.7	5.5	7,371	7,763	5.3	4,172	4,352	4.3	14,761	15,714	6.5
Saint Clair	7.5	7.7	2.7	6,447	6,544	1.5	2,144	2,574	20.1	7,406	8,423	13.7
Saint Joseph	6.3	7.2	14.2	2,011	2,337	16.2	1,046	1,053	0.7	3,002	3,263	8.7
Sanilac	7.2	8.5	17.6	1,595	1,924	20.6	510	577	13.1	2,286	2,488	8.8
Schoolcraft	7.9	7.9	0.0	337	337	0.0	80	98	22.5	484	525	8.5
Shiawassee	7.6	8.4	11.0	2,835	3,172	11.9	1,015	1,097	8.1	3,171	3,537	11.6
Tuscola	7.5	8.3	11.2	2,205	2,510	13.8	614	656	6.8	2,273	2,592	14.0
Van Buren	6.1	6.2	2.7	2,455	2,549	3.8	1,637	1,787	9.2	4,671	4,914	5.2
Washtenaw	4.2	4.7	13.6	8,007	9,073	13.3	3,411	3,864	13.3	8,772	10,511	19.8
Wayne	8.8	8.9	0.8	80,666	80,337	-0.4	45,441	49,320	8.5	154,923	167,213	7.9
Wexford	6.9	8.6	23.6	1,045	1,310	25.4	537	661	23.1	2,028	2,304	13.6

FACT

Low- and middle-income taxpayers should remember to file for the earned income and child tax credits when they do their taxes. 638,232 Michigan residents got a refund through the federal earned income credit for Tax Year 2004.

¹In some cases the Michigan number is slightly different from the county total.

Data sources: Unemployment: Bureau of Labor Statistics, Local Area Unemployment Statistics; Public Assistance: Michigan Department of Human Services.

Family Independence Program (Cash Assistance)

Total Number of Applications			Average Number of Families Receiving Cash Assistance Per Month			Application Approvals: Unemployment Benefits Exhausted, Layoff or Discharge, Depleted Savings, Non-Exempt Property or Loss of Other Resources			Total Number of Denials		Income Exceeds Standards as Percent of Denials		Percent of Cases Without Earned Income, Out of Total Cases Expected to Work	
Qtr 3 2005	Qtr 3 2006	% change	Qtr 3 2005	Qtr 3 2006	% change	Qtr 3 2005	Qtr 3 2006	% change	Qtr 3 2005	Qtr 3 2006	Qtr 3 2005	Qtr 3 2006	Qtr 3 2005	Qtr 3 2006
385	470	22.1	359	415	15.8	3	10	233.3	180	190	48.9	63.2	45%	60%
331	389	17.5	148	181	22.3	13	17	30.8	205	215	56.1	68.8	66%	65%
29	29	0.0	23	29	29.4	1	0	-100.0	9	13	33.3	46.2	47%	67%
40	44	10.0	30	25	-16.7	0	3	0	19	23	52.6	87.0	0%	0%
2,328	2,591	11.3	2,522	3,056	21.2	100	177	77.0	1,126	1,039	47.2	65.1	64%	68%
121	138	14.0	117	133	13.1	11	12	9.1	48	57	54.2	66.7	53%	69%
177	179	1.1	247	274	10.9	11	8	-27.3	50	56	54.0	64.3	62%	67%
166	144	-13.3	205	182	-11.2	13	19	46.2	71	51	50.7	66.7	60%	41%
217	221	1.8	204	267	30.5	9	11	22.2	89	76	50.6	65.8	76%	67%
95	80	-15.8	75	73	-2.2	5	8	60.0	37	21	24.3	52.4	35%	50%
314	303	-3.5	325	353	8.6	21	23	9.5	172	150	54.7	62.0	48%	52%
63	50	-20.6	65	65	1.0	6	8	33.3	22	17	40.9	58.8	*	*
601	590	-1.8	607	689	13.6	15	28	86.7	287	205	42.2	68.3	67%	66%
331	340	2.7	273	361	32.2	14	25	78.6	149	105	47.0	64.8	73%	69%
35	58	65.7	40	52	30.8	4	12	200.0	12	22	66.7	77.3	71%	56%
1,455	1,521	4.5	2,625	2,813	7.1	81	79	-2.5	522	380	49.6	57.9	71%	67%
270	227	-15.9	263	279	6.1	11	4	-63.6	89	79	24.7	41.8	70%	72%
2,969	3,268	10.1	3,317	3,581	8.0	64	105	64.1	1,594	1,608	51.2	61.2	66%	74%
182	204	12.1	294	296	0.7	26	31	19.2	66	69	66.7	60.9	59%	60%
147	129	-12.2	152	166	9.0	27	39	44.4	45	33	64.4	81.8	60%	64%
27	34	25.9	34	38	13.9	3	6	100.0	10	9	50.0	77.8	38%	22%
121	121	0.0	163	161	-1.0	8	11	37.5	50	37	54.0	67.6	*	*
58	47	-19.0	52	65	25.8	10	13	30.0	13	8	61.5	87.5	25%	26%
95	127	33.7	80	85	5.8	4	6	50.0	48	53	54.2	79.2	46%	43%
547	554	1.3	455	513	12.8	15	24	60.0	231	209	48.5	60.3	60%	74%
44	52	18.2	39	49	25.6	1	3	200.0	27	22	63.0	50.0	0%	42%
120	120	0.0	151	180	19.2	3	1	-66.7	50	34	52.0	76.5	52%	57%
1,607	1,559	-3.0	2,981	3,054	2.4	116	125	7.8	745	546	38.9	52.2	48%	52%
781	863	10.5	991	1,167	17.8	66	99	50.0	335	272	40.6	62.9	56%	67%
407	397	-2.5	324	385	18.7	22	32	45.5	200	150	51.0	57.3	62%	63%
187	186	-0.5	212	247	16.5	41	25	-39.0	74	37	54.1	48.6	58%	58%
34	44	29.4	50	50	-0.7	1	4	300.0	5	10	40.0	50.0	58%	59%
363	427	17.6	312	346	10.8	5	40	700.0	149	159	53.0	68.6	52%	54%
207	222	7.2	237	268	13.4	10	11	10.0	84	77	38.1	71.4	62%	56%
513	480	-6.4	586	554	-5.4	37	39	5.4	218	188	54.1	57.4	60%	59%
1,027	1,046	1.9	1,247	1,404	12.6	8	21	162.5	406	390	39.2	57.4	65%	65%
14,412	14,560	1.0	33,470	35,858	7.1	383	509	32.9	5,652	4,425	37.1	53.4	71%	72%
209	243	16.3	242	278	14.7	17	34	100.0	96	82	55.2	74.4	68%	68%

FACT

Low-income tax filers should avoid using paid tax services and taking out rapid anticipation loans for a quick refund on their taxes. Instead, they should use free tax preparation from their nearest VITA site or from the I-CAN! EIC e-filing program. For more information, see www.michiganaic.org.

¹In some cases the Michigan number is slightly different from the county total.

*Data is unavailable or cannot be calculated.

Data sources: Unemployment: Bureau of Labor Statistics, Local Area Unemployment Statistics; Public Assistance: Michigan Department of Human Services.

Employment Trends by Selected Industries in Michigan
(data not seasonally adjusted, rounded to the nearest hundred)

Industry	Avg 2005 Qtr 3	Avg 2006 Qtr 3	% Change	Industry	Avg 2005 Qtr 3	Avg 2006 Qtr 3	% Change
TOTAL NONFARM	4,362,500	4,345,700	-0.4	Trade Transportation & Utilities	805,400	792,500	-1.6
TOTAL PRIVATE	3,741,100	3,726,500	-0.4	•Wholesale Trade	171,000	171,500	0.3
GOODS PRODUCING	885,500	855,600	-3.4	Merchant Wholesalers			
SERVICE-PROVIDING	3,477,100	3,490,100	0.4	Durable Goods	96,800	97,400	0.6
Natural Resources and Mining	8,900	8,900	0.0	Merchant Wholesalers			
Mining	7,100	7,200	1.4	Nondurable Goods	49,900	50,100	0.4
Mining except oil and gas	4,800	5,000	4.2	Wholesale Electronic Markets			
Construction	206,900	207,700	0.4	and Agents and Brokers	24,200	24,000	-0.8
Construction of Buildings	48,800	48,800	0.0	•Retail Trade	505,400	491,000	-2.8
Heavy and Civil Engineering	21,600	22,100	2.3	Motor Vehicle and Parts Dealers	61,900	60,400	-2.4
Specialty Trade Contractors	136,500	136,800	0.2	Furniture and Home Furnishings	17,900	17,500	-2.2
Manufacturing	669,700	639,000	-4.6	Electronics and Appliance	17,400	17,600	1.1
•Durable Goods	519,300	488,700	-5.9	Building Material and Garden			
Nonmetallic Mineral Products	16,800	16,400	-2.4	Equip. and Supplies Dealers	47,700	48,900	2.5
Primary Metal Manufacturing	26,500	26,200	-1.1	Food and Beverage Stores	84,900	83,700	-1.4
Fabricated Metal Product	84,900	84,500	-0.5	Health and Personal Care	33,400	33,300	-0.3
Machinery Manufacturing	74,500	73,700	-1.1	Gasoline Stations	25,600	25,300	-1.2
Computer and Electronic Products	20,200	20,700	2.5	Clothing and Clothing Accessories	41,100	42,000	2.2
Electrical Equipment and				Sporting Goods, Hobby, Book,			
Appliances	13,300	10,800	-18.8	and Music Stores	23,700	23,300	-1.7
Motor Vehicle Manufacturing	62,300	52,100	-16.4	General Merchandise Stores	111,500	107,500	-3.6
Motor Vehicle Parts				Miscellaneous Store Retail	29,600	28,200	-4.7
Manufacturing	153,000	145,400	-5.0	•Transportation & Warehousing	129,000	130,000	0.8
Furniture and Related Products	25,100	24,900	-0.8	Rail Transportation	5,000	4,900	-2.0
Miscellaneous Manufacturing	17,500	17,400	-0.6	Truck Transportation	38,400	40,300	4.9
•Non-Durable Goods	150,400	150,300	-0.1	Couriers and Messengers	12,300	11,700	-4.9
Food Manufacturing	35,000	35,500	1.4	Warehousing and Storage	15,800	15,900	0.6
Paper Manufacturing	15,000	15,100	0.7	Information	67,500	66,900	-0.9
Printing and Related Support				Publishing Industries	24,500	24,000	-2.0
Activities	17,700	17,300	-2.3	Telecommunications	21,900	21,800	-0.5
Chemical Manufacturing	30,200	29,700	-1.7	Financial Activities	219,900	221,800	0.9
Plastics and Rubber Products	41,700	41,100	-1.4	Finance and Insurance	162,600	164,600	1.2
				Real Estate	38,900	38,800	-0.3

Note: Industry details and subtotals may not sum to totals due to rounding.

Source: Department of Labor and Economic Growth/Office of Labor Market Information, Current Employment Statistics Section - (800) 225-3732

Employment Trends by Selected Industries in Michigan
(data not seasonally adjusted, rounded to the nearest hundred)

Industry	Avg 2005 Qtr 3	Avg 2006 Qtr 3	% Change	Industry	Avg 2005 Qtr 3	Avg 2006 Qtr 3	% Change
Professional & Business Services	595,900	611,600	2.6	Food Services and Drinking	315,000	318,000	1.0
Legal Services	29,800	29,800	0.0	Other Services	179,800	179,700	-0.1
Accounting and Tax Preparation	25,400	27,500	8.3	Repair and Maintenance	41,600	40,400	-2.9
Architectural Engineering	70,400	70,800	0.6	Personal and Laundry Services	41,400	41,500	0.2
Computer Systems Design	38,400	39,400	2.6	Religious Grantmaking Civic Professional	96,800	97,800	1.0
Management, Scientific and Technical Consulting Services	19,500	20,100	3.1	Government	621,500	619,200	-0.4
Scientific Research and Development Services	23,900	24,500	2.5	• Federal Government	54,800	55,100	0.5
Advertising and Related	16,100	15,800	-1.9	Federal Government Hospital Services	5,700	5,800	1.8
Other Professional Scientific and Technical Services	15,600	15,800	1.3	U.S. Postal Service	27,600	27,800	0.7
Management of Companies	64,300	63,400	-1.4	• State Government	161,300	159,400	-1.2
Administrative & Support Services	287,200	298,400	3.9	State Government Educational Services	88,800	88,900	0.1
Educational and Health Services	561,100	568,000	1.2	State Government Hospital Services	14,600	15,300	4.8
• Educational Services (see also Government)	66,500	68,600	3.2	• Local Government	405,300	404,800	-0.1
• Health Care & Social Assistance	494,600	499,400	1.0	Local Government Educational Services	219,000	213,300	-2.6
Ambulatory Health Care Services	165,600	167,300	1.0	Local Government Hospitals	13,900	13,900	0.0
Offices of Physicians	66,300	67,300	1.5	Local Government Elementary and Secondary Schools	199,300	196,200	-1.6
Offices of Dentists	32,000	32,100	0.3	Local Government Junior Colleges	18,300	17,400	-4.9
Offices of Other Health Professionals	19,400	19,600	1.0				
Outpatient Care Centers	13,700	13,800	0.7				
Home Health Care Service	24,700	25,000	1.2				
Hospitals	182,700	184,200	0.8				
Nursing and Residential Care	89,700	90,100	0.4				
—Nursing Care Facilities	41,500	41,400	-0.2				
—Community Care Facilities	23,000	23,000	0.0				
Social Assistance	56,700	57,700	1.8				
—Individual and Family Services	24,500	24,900	1.6				
Leisure and Hospitality	426,000	430,400	1.0				
Performing Arts Spectator Activities	10,000	10,000	0.0				
Amusement, Gambling & Recreation	59,000	59,400	0.7				
Accommodation	38,200	38,500	0.8				

VISIT OUR WEBSITE FOR MORE INFORMATION!

The "Work and Wages" section of the Michigan League for Human Services website has information on Workforce Development, Work Supports, Unemployment, and Self-Sufficiency. It also includes back issues of the Economic Security Bulletin. Go to <http://www.MiLHS.org> and click the "Work and Wages" tab at the right.

Note: Industry details and subtotals may not sum to totals due to rounding.

Source: Department of Labor and Economic Growth/Office of Labor Market Information, Current Employment Statistics Section - (800) 225-3732



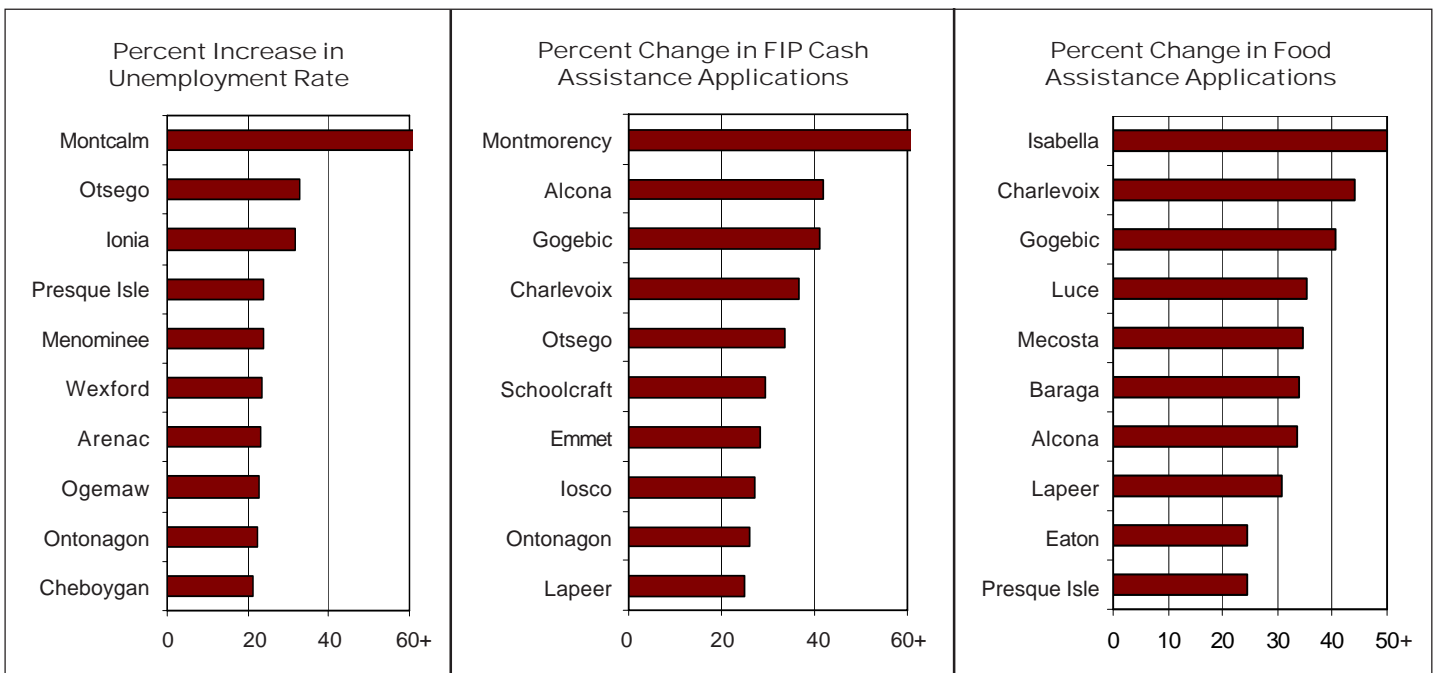
Michigan League for Human Services

1115 South Pennsylvania Avenue, Suite 202
 Lansing, MI 48912-1658
 (517) 487-5436 — Fax (517) 371-4546
 Web site: www.milhs.org

A United Way Agency

Nonprofit
 Organization
 U.S. Postage
Paid
 Lansing, MI
 Permit #1421

Percentage Change in Michigan Counties With Largest Increases
 Third Quarter 2005 — Third Quarter 2006



Sources: Unemployment: Bureau of Labor Statistics, Local Area Unemployment Statistics; Public Assistance: Michigan Department of Human Services