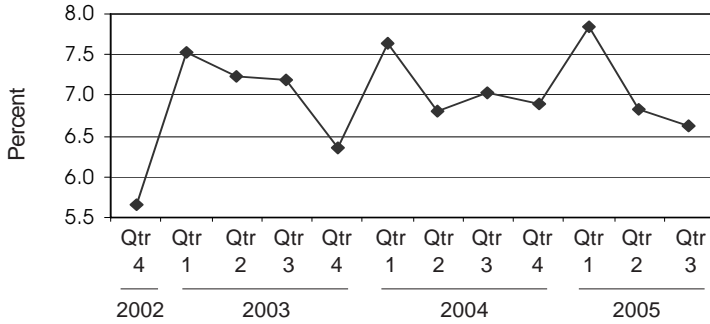


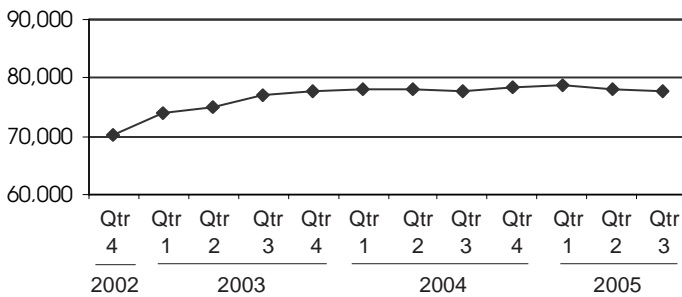


Michigan's Unemployment Rate
Over the Past Three Years
(not seasonally adjusted)



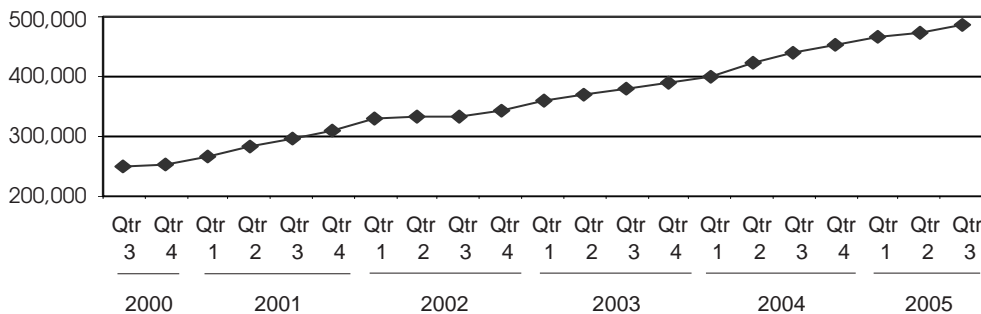
Source: Michigan Family Independence Agency

FIP Caseload Over the Past Three Years



Source: Michigan Family Independence Agency

Food Assistance Households Over the Past Five Years



Source: Michigan Family Independence Agency

Food Assistance Caseloads Nearly Doubled from Five Years Ago

Unemployment


In the third quarter of 2005, unemployment dropped to 6.6 percent, down from 6.8 percent during the second quarter and 7 percent during the same period the previous year. Along with the drop in unemployment there was a promising surge in the labor force, up 58,645 over the previous quarter. However, Michigan's employment continues to rank high nationally, with the most recent estimates showing it higher than all other states except South Carolina and Mississippi.

Public Assistance

The number of Food Assistance households continues to rise, as an average of 485,696 households received assistance during the third quarter—nearly twice the amount that received Food Assistance during the same time five years ago. Applications for Food Assistance increased by 11 percent over the previous quarter, 9 percent over the same time a year ago, and 31 percent over the same time five years ago. FIP caseloads, meanwhile, were just under 78,000 as they were the same time last year, but are 15 percent higher than they were five years ago. FIP applications remained where they were at the same time last year but are up 12 percent from the same time five years ago.

Sectoral Trends

The motor vehicle manufacturing industry continued to lead the sectors that have experienced substantial decreases, with jobs down by 14.1 percent from the third quarter of 2004. General merchandise retail employment also experienced a significant decrease in employment, with more than 5,000 jobs lost.

 Prepared by: Michigan League for Human Services	Unemployment (data not seasonally adjusted)						Food Assistance Program					
	Unemployment Rate			Number Unemployed			Total Number of Applications			Average Number of Households Receiving Food Assistance Per Month		
	County	Qtr 3 2004	Qtr 3 2005	% change	Qtr 3 2004	Qtr 3 2005	% change	Qtr 3 2004	Qtr 3 2005	% change	Qtr 3 2004	Qtr 3 2005
Michigan¹	7.0	6.6	-5.7	359,187	341,419	-4.9	137,943	149,700	8.5	439,722	485,696	10.5
Alcona	8.8	9.1	3.8	380	403	6.1	109	101	-7.3	462	488	5.5
Alger	6.4	6.1	-5.2	295	285	-3.4	79	69	-12.7	278	289	4.2
Allegan	6.3	5.8	-7.4	3,467	3,211	-7.4	1,075	1,351	25.7	3,292	3,688	12.0
Alpena	7.5	6.3	-16.1	1,155	975	-15.6	456	496	8.8	1,848	2,007	8.6
Antrim	6.6	6.0	-8.1	847	795	-6.2	209	277	32.5	628	764	21.8
Arenac	8.1	7.4	-8.6	674	603	-10.5	202	225	11.4	1,038	1,067	2.8
Baraga	10.3	9.5	-7.1	427	407	-4.7	106	130	22.6	382	433	13.3
Barry	5.5	4.7	-13.4	1,641	1,447	-11.9	607	661	8.9	1,797	2,023	12.6
Bay	7.2	6.4	-10.2	4,122	3,647	-11.5	1,342	1,358	1.2	5,544	6,068	9.4
Benzie	5.6	5.8	4.2	517	559	8.2	219	227	3.7	524	537	2.5
Berrien	7.6	6.8	-10.9	5,987	5,346	-10.7	2,870	3,090	7.7	8,708	9,319	7.0
Branch	7.2	6.7	-6.5	1,673	1,602	-4.2	617	739	19.8	1,737	1,909	9.9
Calhoun	6.7	6.4	-4.5	4,951	4,737	-4.3	2,497	2,727	9.2	8,275	9,037	9.2
Cass	4.3	4.8	10.8	1,179	1,355	14.9	691	765	10.7	2,228	2,501	12.3
Charlevoix**	6.3	6.0	-4.8	942	900	-4.4	**	189	*	**	678	*
Cheboygan	4.1	4.4	9.0	566	635	12.1	334	379	13.5	1,227	1,357	10.6
Chippewa	7.1	6.6	-7.0	1,295	1,221	-5.7	441	470	6.6	1,474	1,557	5.6
Clare	8.9	8.7	-2.3	1,215	1,203	-0.9	516	567	9.9	2,180	2,371	8.8
Clinton	5.1	5.2	1.9	1,882	1,951	3.6	440	505	14.8	1,328	1,441	8.5
Crawford	6.5	5.7	-12.8	460	409	-11.0	199	243	22.1	699	758	8.4
Delta	6.9	6.1	-10.7	1,450	1,296	-10.6	513	514	0.2	1,844	1,967	6.7
Dickinson	5.8	4.9	-15.0	850	732	-13.9	294	343	16.7	964	976	1.2
Eaton	5.1	5.4	4.5	2,994	3,184	6.3	1,129	1,117	-1.1	2,948	3,296	11.8
Emmet**	5.4	5.3	-1.2	1,149	1,140	-0.8	470	369	-21.5	1,622	1,147	-29.3
Genesee	8.3	7.9	-4.8	17,753	16,924	-4.7	8,893	9,290	4.5	28,863	32,023	10.9
Gladwin	9.8	8.8	-9.9	1,107	1,002	-9.5	355	340	-4.2	1,382	1,526	10.4
Gogebic	7.2	6.8	-6.0	579	547	-5.5	201	221	10.0	932	993	6.5
Gr. Traverse**	5.5	4.8	-13.9	2,818	2,472	-12.3	1,103	1,175	6.5	2,918	2,895	-0.8
Gratiot	8.0	7.6	-5.8	1,612	1,568	-2.7	510	563	10.4	1,625	1,807	11.2
Hillsdale	8.5	7.4	-12.6	1,954	1,695	-13.3	486	540	11.1	1,678	1,861	10.9
Houghton	5.3	5.2	-1.9	923	923	0.0	270	410	51.9	1,444	1,573	8.9
Huron	8.5	7.1	-16.1	1,493	1,273	-14.8	281	288	2.5	1,456	1,513	3.9
Ingham	6.4	6.4	0.0	10,001	10,151	1.5	4,603	4,851	5.4	13,064	14,902	14.1
Ionia	8.1	7.2	-11.5	2,485	2,199	-11.5	731	778	6.4	2,328	2,528	8.6
Iosco	7.9	7.4	-6.7	882	831	-5.8	305	385	26.2	1,674	1,749	4.5
Iron	6.2	5.6	-9.7	373	339	-9.3	116	128	10.3	549	584	6.2
Isabella	4.5	4.3	-3.0	1,640	1,659	1.2	580	854	47.2	2,244	2,607	16.2
Jackson	7.3	6.5	-10.9	5,824	5,264	-9.6	2,255	2,560	13.5	6,703	7,477	11.6
Kalamazoo	5.9	5.2	-11.9	7,788	6,944	-10.8	3,585	3,774	5.3	11,027	12,432	12.7
Kalkaska	6.5	6.3	-4.1	613	603	-1.7	258	302	17.1	817	901	10.3
Kent	6.8	5.9	-13.7	21,560	18,821	-12.7	9,031	9,216	2.0	24,671	27,330	10.8
Keweenaw	9.3	7.5	-19.7	98	79	-19.0	39	22	-43.6	153	77	-49.6
Lake	9.6	8.5	-12.1	438	376	-14.2	212	256	20.8	1,015	1,088	7.2
Lapeer	7.0	6.6	-5.7	3,181	2,996	-5.8	730	696	-4.7	2,037	2,214	8.7
Leelanau**	4.1	3.8	-8.9	503	474	-5.9	**	159	*	**	317	*

¹In some cases the Michigan number is slightly different from the county total.

*Cannot be calculated.

**Public Assistance data for Charlevoix is combined with and reported as Emmet, Public Assistance data for Leelanau is combined with and reported as Grand Traverse, and Public Assistance data for Missaukee is combined with and reported as Wexford.

Data sources: Unemployment: Bureau of Labor Statistics, Local Area Unemployment Statistics; Public Assistance: Michigan Department of Human Services.

Family Independence Program (Cash Assistance)


Total Number of Applications			Average Number of Families Receiving Cash Assistance Per Month			Application Approvals: Unemployment Benefits Exhausted, Layoff or Discharge, Depleted Savings, Non-Exempt Property or Loss of Other Resources			Total Number of Denials		Income Exceeds Standards as Percent of Denials		Percent of Cases Without Earned Income, Out of Total Cases Expected to Work	
Qtr 3 2004	Qtr 3 2005	% change	Qtr 3 2004	Qtr 3 2005	% change	Qtr 3 2004	Qtr 3 2005	% change	Qtr32 2004	Qtr 3 2005	Qtr 3 2004	Qtr 3 2005	Qtr 3 2004	Qtr 3 2005
51,448	50,615	-1.6	77,612	77,836	0.3	2,476	2,116	-14.5	22,297	22,119	45.3	44.6	66%	66%
40	31	-22.5	37	40	8.1	0	0	*	14	10	64.3	50.0	67%	27%
42	21	-50.0	23	22	-4.4	1	2	100.0	18	10	61.1	50.0	17%	0%
478	511	6.9	359	378	5.3	46	23	-50.0	218	259	54.6	53.3	46%	62%
149	150	0.7	168	164	-2.2	29	13	-55.2	54	72	55.6	55.6	29%	26%
97	106	9.3	58	61	4.0	0	1	*	44	59	68.2	74.6	30%	20%
76	76	0.0	97	88	-9.2	1	7	600.0	38	31	47.4	58.1	30%	39%
36	36	0.0	58	56	-3.4	1	0	-100.0	8	9	25.0	44.4	54%	25%
242	216	-10.7	227	220	-3.2	51	14	-72.5	94	93	55.3	52.7	49%	48%
559	547	-2.1	759	758	-0.1	42	38	-9.5	201	195	47.8	46.7	49%	49%
67	83	23.9	42	44	4.7	5	12	140.0	38	43	65.8	65.1	37%	49%
1,190	1,065	-10.5	1,283	1,224	-4.6	33	36	9.1	592	505	44.1	43.6	53%	51%
278	346	24.5	249	221	-11.5	31	29	-6.5	147	186	40.1	42.5	58%	50%
1,148	1,115	-2.9	1,353	1,480	9.4	67	66	-1.5	505	490	50.1	48.6	65%	65%
272	248	-8.8	288	309	7.3	12	8	-33.3	97	120	49.5	54.2	57%	66%
**	71	*	**	44	*	0	2	*	*	32	*	53.1	**	**
126	150	19.0	108	103	-4.6	6	6	0.0	60	65	70.0	63.1	83%	55%
164	154	-6.1	166	151	-8.9	8	13	62.5	56	59	42.9	57.6	57%	69%
253	241	-4.7	291	284	-2.4	21	9	-57.1	111	121	45.0	49.6	51%	54%
186	165	-11.3	133	111	-16.6	19	8	-57.9	100	90	62.0	55.6	58%	53%
84	101	20.2	71	81	15.1	4	6	50.0	33	53	60.6	50.9	52%	35%
155	154	-0.6	153	147	-4.3	10	5	-50.0	67	72	58.2	41.7	49%	63%
89	111	24.7	68	69	2.0	12	18	50.0	40	43	60.0	53.5	67%	69%
486	411	-15.4	336	369	9.6	19	10	-47.4	247	190	43.3	48.9	52%	50%
147	99	-32.7	117	58	-50.6	9	3	-66.7	72	47	52.8	40.4	21%	0%
3,835	3,777	-1.5	6,585	6,675	1.4	158	171	8.2	1,651	1,683	42.6	40.6	59%	60%
162	137	-15.4	120	151	25.9	10	2	-80.0	74	67	51.4	53.7	61%	59%
69	68	-1.4	123	156	26.9	5	3	-40.0	19	14	73.7	35.7	54%	72%
378	323	-14.6	182	144	-20.8	9	10	11.1	198	177	60.1	61.0	72%	67%
266	252	-5.3	200	254	27.0	18	15	-16.7	136	148	46.3	54.1	44%	57%
235	248	5.5	164	171	4.1	26	18	-30.8	109	107	43.1	54.2	53%	73%
67	68	1.5	96	95	-1.7	3	7	133.3	20	24	80.0	70.8	44%	33%
87	85	-2.3	111	113	1.8	12	20	66.7	33	27	78.8	74.1	50%	56%
1,631	1,592	-2.4	1,660	1,785	7.6	69	54	-21.7	792	761	40.9	44.5	65%	59%
342	346	1.2	263	221	-16.1	14	8	-42.9	142	170	49.3	51.8	64%	54%
139	117	-15.8	142	122	-14.3	6	1	-83.3	58	50	50.0	56.0	40%	40%
49	54	10.2	69	65	-6.3	2	2	0.0	21	17	33.3	52.9	25%	75%
279	298	6.8	259	301	16.4	4	1	-75.0	113	150	55.8	57.3	69%	65%
878	922	5.0	1,107	1,052	-4.9	33	38	15.2	400	454	38.0	39.0	69%	68%
1,455	1,441	-1.0	1,758	1,723	-2.0	66	64	-3.0	588	566	38.4	37.5	67%	63%
102	117	14.7	70	62	-10.5	15	16	6.7	29	52	41.4	48.1	39%	20%
3,397	3,129	-7.9	4,454	4,329	-2.8	195	154	-21.0	1,478	1,431	47.8	48.2	38%	48%
10	5	-50.0	7	5	-33.3	1	0	-100.0	3	2	*	*	0%	0%
76	104	36.8	148	130	-12.2	5	10	100.0	16	31	25.0	41.9	69%	71%
321	267	-16.8	236	263	11.1	6	8	33.3	159	124	61.0	50.8	55%	74%
**	42	*	**	24	*	0	0	*	*	25	*	56.0	**	**

¹In some cases the Michigan number is slightly different from the county total.

*Cannot be calculated.

**Public Assistance data for Charlevoix is combined with and reported as Emmet, Public Assistance data for Leelanau is combined with and reported as Grand Traverse, and Public Assistance data for Missaukee is combined with and reported as Wexford.

Data sources: Unemployment: Bureau of Labor Statistics, Local Area Unemployment Statistics; Public Assistance: Michigan Department of Human Services.

 Prepared by: Michigan League for Human Services	Unemployment (data not seasonally adjusted)						Food Assistance Program					
	Unemployment Rate			Number Unemployed			Total Number of Applications			Average Number of Households Receiving Food Assistance Per Month		
	Qtr 3 2004	Qtr 3 2005	% change	Qtr 3 2004	Qtr 3 2005	% change	Qtr 3 2004	Qtr 3 2005	% change	Qtr 3 2004	Qtr 3 2005	% change
Lenawee	7.5	7.1	-5.8	3,814	3,612	-5.3	1,044	1,244	19.2	2,987	3,376	13.0
Livingston	4.6	4.9	5.0	4,288	4,536	5.8	768	938	22.1	1,809	2,173	20.2
Luce	6.5	6.2	-4.6	197	188	-4.4	110	71	-35.5	418	352	-15.8
Mackinac	2.8	3.1	10.6	232	260	12.2	83	99	19.3	230	344	49.9
Macomb	7.0	6.7	-4.3	30,016	28,908	-3.7	7,026	7,924	12.8	21,074	23,991	13.8
Manistee	7.5	6.8	-8.9	915	838	-8.5	307	358	16.6	1,186	1,372	15.7
Marquette	5.3	4.8	-9.4	1,863	1,734	-6.9	571	720	26.1	2,350	2,621	11.5
Mason	7.7	6.2	-19.5	1,213	972	-19.8	327	428	30.9	1,374	1,541	12.2
Mecosta	6.6	6.6	-0.5	1,286	1,253	-2.6	615	704	14.5	2,187	2,580	18.0
Menominee	5.4	5.0	-7.4	740	699	-5.5	212	292	37.7	961	1,073	11.7
Midland	6.2	5.5	-10.8	2,568	2,283	-11.1	740	840	13.5	2,884	3,284	13.9
Missaukee**	6.8	5.8	-15.1	475	407	-14.3	**	**	*	**	648	*
Monroe	6.3	6.4	1.6	4,931	5,055	2.5	1,247	1,509	21.0	4,018	4,526	12.7
Montcalm	7.9	8.1	2.5	2,357	2,400	1.8	739	854	15.6	2,539	2,892	13.9
Montmorency	9.2	8.4	-9.4	414	391	-5.6	110	156	41.8	578	600	3.9
Muskegon	7.6	6.8	-11.4	6,891	6,198	-10.1	3,301	3,579	8.4	11,899	13,201	10.9
Newaygo	7.5	6.8	-8.9	1,724	1,581	-8.3	564	680	20.6	2,323	2,464	6.1
Oakland	5.7	5.5	-4.1	37,216	35,896	-3.5	9,912	10,767	8.6	24,179	26,182	8.3
Oceana	7.2	7.0	-2.3	1,014	1,000	-1.3	455	515	13.2	1,681	1,810	7.7
Ogemaw	7.2	5.7	-20.0	723	583	-19.3	382	369	-3.4	1,562	1,738	11.2
Ononagon	6.5	5.6	-13.8	240	210	-12.6	78	72	-7.7	331	361	9.0
Osceola	8.2	6.6	-19.9	873	699	-19.9	280	296	5.7	1,328	1,417	6.7
Oscoda	10.0	9.1	-8.4	409	373	-8.7	137	130	-5.1	576	617	7.1
Otsego	6.6	6.0	-8.6	864	808	-6.5	274	315	15.0	1,040	1,110	6.8
Ottawa	5.4	5.0	-8.0	7,280	6,697	-8.0	1,657	1,877	13.3	4,746	5,223	10.1
Presque Isle	7.7	7.3	-5.6	529	494	-6.7	100	119	19.0	498	537	7.9
Roscommon	7.6	6.4	-16.2	883	778	-11.9	386	340	-11.9	1,642	1,813	10.4
Saginaw	8.5	7.5	-11.8	8,674	7,587	-12.5	3,709	4,172	12.5	13,321	14,761	10.8
Saint Clair	7.6	7.6	0.4	6,498	6,579	1.2	2,144	2,144	0.0	6,695	7,406	10.6
Saint Joseph	6.6	6.5	-2.5	2,123	2,067	-2.7	890	1,046	17.5	2,824	3,002	6.3
Sanilac	8.6	7.5	-12.5	1,903	1,640	-13.8	488	510	4.5	2,073	2,286	10.3
Schoolcraft	8.1	8.1	-0.8	343	346	0.9	98	80	-18.4	458	484	5.7
Shiawassee	8.1	7.7	-4.5	3,022	2,917	-3.5	911	1,015	11.4	2,819	3,171	12.5
Tuscola	8.6	7.5	-12.5	2,570	2,266	-11.8	596	614	3.0	2,064	2,273	10.2
Van Buren	6.7	6.3	-6.5	2,655	2,528	-4.8	1,531	1,637	6.9	4,409	4,671	5.9
Washtenaw	4.4	4.3	-1.5	8,238	8,247	0.1	2,838	3,411	20.2	7,667	8,772	14.4
Wayne	9.1	8.9	-2.6	84,274	82,132	-2.5	42,719	45,441	6.4	140,911	154,923	9.9
Wexford**	7.8	7.0	-10.7	1,187	1,075	-9.5	635	537	-15.4	2,479	2,028	-18.2

FACT

The federal Earned Income Tax Credit helps low-wage workers increase their economic security. At least 638,232 Michigan workers claimed the credit for Tax Year 2004, bringing more than \$1,130,240,975 into Michigan's economy.

*Cannot be calculated.

**Public Assistance data for Charlevoix is combined with and reported as Emmet, Public Assistance data for Leelanau is combined with and reported as Grand Traverse, and Public Assistance data for Missaukee is combined with and reported as Wexford.

Data sources: Unemployment: Bureau of Labor Statistics, Local Area Unemployment Statistics; Public Assistance: Michigan Department of Human Services.

Family Independence Program (Cash Assistance)

Total Number of Applications			Average Number of Families Receiving Cash Assistance Per Month			Application Approvals: Unemployment Benefits Exhausted, Layoff or Discharge, Depleted Savings, Non-Exempt Property or Loss of Other Resources			Total Number of Denials		Income Exceeds Standards as Percent of Denials		Percent of Cases Without Earned Income, Out of Total Cases Expected to Work	
Qtr 3 2004	Qtr 3 2005	% change	Qtr 3 2004	Qtr 3 2005	% change	Qtr 3 2004	Qtr 3 2005	% change	Qtr3 2004	Qtr 3 2005	Qtr 3 2004	Qtr 3 2005	Qtr 3 2004	Qtr 3 2005
408	385	-5.6	370	359	-3.1	10	3	-70.0	192	180	44.3	48.9	49%	45%
317	331	4.4	145	148	2.1	17	13	-23.5	188	205	62.2	56.1	47%	66%
51	29	-43.1	39	23	-42.4	0	1	*	25	9	64.0	33.3	60%	47%
36	40	11.1	22	30	38.5	1	0	-100.0	22	19	59.1	52.6	33%	0%
2,362	2,328	-1.4	2,384	2,522	5.8	117	100	-14.5	1,165	1,126	51.9	47.2	65%	64%
121	121	0.0	115	117	2.0	7	11	57.1	47	48	48.9	54.2	66%	53%
167	177	6.0	244	247	1.4	10	11	10.0	53	50	58.5	54.0	61%	62%
133	166	24.8	188	205	9.0	10	13	30.0	36	71	47.2	50.7	38%	60%
190	217	14.2	202	204	1.2	2	9	350.0	79	89	46.8	50.6	77%	76%
82	95	15.9	74	75	0.9	6	5	-16.7	37	37	48.6	24.3	100%	35%
309	314	1.6	341	325	-4.6	27	21	-22.2	142	172	56.3	54.7	49%	48%
**	63	*	**	65	*	0	6	*	*	22	*	40.9	**	**
566	601	6.2	580	607	4.5	19	15	-21.1	256	287	44.5	42.2	71%	67%
355	331	-6.8	271	273	0.9	22	14	-36.4	176	149	51.1	47.0	66%	73%
43	35	-18.6	46	40	-13.0	1	4	300.0	21	12	71.4	66.7	41%	71%
1,312	1,455	10.9	2,653	2,625	-1.1	82	81	-1.2	468	522	50.9	49.6	70%	71%
213	270	26.8	266	263	-0.9	20	11	-45.0	73	89	46.6	24.7	68%	70%
3,047	2,969	-2.6	3,351	3,317	-1.0	116	64	-44.8	1,609	1,594	45.2	51.2	62%	66%
152	182	19.7	299	294	-1.7	26	26	0.0	44	66	56.8	66.7	55%	59%
117	147	25.6	148	152	2.9	18	27	50.0	44	45	61.4	64.4	59%	60%
20	27	35.0	36	34	-7.3	2	3	50.0	7	10	85.7	50.0	41%	38%
128	121	-5.5	157	163	3.6	5	8	60.0	53	50	58.5	54.0	71%	**
42	58	38.1	50	52	3.3	7	10	42.9	19	13	52.6	61.5	33%	25%
109	95	-12.8	71	80	13.7	4	4	0.0	54	48	61.1	54.2	45%	46%
566	547	-3.4	456	455	-0.3	15	15	0.0	243	231	49.4	48.5	61%	60%
47	44	-6.4	30	39	28.6	1	1	0.0	16	27	43.8	63.0	0%	0%
151	120	-20.5	151	151	0.0	5	3	-40.0	52	50	40.4	52.0	48%	52%
1,551	1,607	3.6	3,070	2,981	-2.9	143	116	-18.9	739	745	41.5	38.9	52%	48%
843	781	-7.4	1,014	991	-2.3	69	66	-4.3	372	335	45.2	40.6	66%	56%
346	407	17.6	304	324	6.7	19	22	15.8	146	200	41.1	51.0	58%	62%
205	187	-8.8	238	212	-11.1	38	41	7.9	92	74	48.9	54.1	53%	58%
51	34	-33.3	52	50	-3.8	2	1	-50.0	15	5	46.7	40.0	73%	58%
387	363	-6.2	290	312	7.8	14	5	-64.3	195	149	51.3	53.0	38%	52%
243	207	-14.8	229	237	3.5	24	10	-58.3	107	84	48.6	38.1	57%	62%
559	513	-8.2	600	586	-2.3	39	37	-5.1	226	218	51.8	54.1	53%	60%
959	1,027	7.1	1,204	1,247	3.5	19	8	-57.9	445	406	41.3	39.2	70%	65%
14,855	14,412	-3.0	33,406	33,470	0.2	455	383	-15.8	5,831	5,652	39.7	37.1	71%	71%
263	209	-20.5	317	242	-23.5	20	17	-15.0	115	96	53.0	55.2	65%	68%

FACT

There are a number of federal and state tax credits available to low-income households. For more information, see the Michigan League for Human Services publication "Money Back in Michigan" (available in January 2006 at www.MiLHS.org).

*Cannot be calculated.

**Public Assistance data for Charlevoix is combined with and reported as Emmet, Public Assistance data for Leelanau is combined with and reported as Grand Traverse, and Public Assistance data for Missaukee is combined with and reported as Wexford.

Data sources: Unemployment: Bureau of Labor Statistics, Local Area Unemployment Statistics; Public Assistance: Michigan Department of Human Services.

Employment Trends by Selected Industries in Michigan
(data not seasonally adjusted, rounded to the nearest hundred)

Industry	Avg 2004 Qtr 3	Avg 2005 Qtr 3	% Change	Industry	Avg 2004 Qtr 3	Avg 2005 Qtr 3	% Change
TOTAL NONFARM	4,376,800	4,338,900	-0.9	Trade Transportation & Utilities	813,000	807,900	-0.6
TOTAL PRIVATE	3,748,700	3,717,000	-0.8	• Wholesale Trade	172,100	171,200	-0.5
GOODS PRODUCING	904,900	877,900	-3.0	Merchant Wholesalers			
SERVICE-PROVIDING	3,471,900	3,461,000	-0.3	Durable Goods	96,500	96,900	0.4
Natural Resources and Mining	8,500	8,700	2.4	Merchant Wholesalers			
Mining	6,800	6,900	1.5	Nondurable Goods	50,600	50,100	-1.0
Mining except oil and gas	4,600	5,000	8.7	Wholesale Electronic Markets			
Construction	206,700	203,000	-1.8	and Agents and Brokers	25,100	24,100	-4.0
Construction of Buildings	48,900	48,300	-1.2	• Retail Trade	515,700	508,900	-1.3
Heavy and Civil Engineering	20,800	19,000	-8.7	Motor Vehicle and Parts Dealers	63,700	64,500	1.3
Specialty Trade Contractors	137,000	135,700	-0.9	Furniture and Home Furnishings	18,100	18,800	3.9
Manufacturing	689,800	666,200	-3.4	Electronics and Appliance	16,700	17,800	6.6
• Durable Goods	541,800	519,100	-4.2	Building Material and Garden			
Wood Product Manufacturing	11,600	11,300	-2.6	Equip. and Supplies Dealers	48,100	48,300	0.4
Nonmetallic Mineral Products	16,800	16,800	0.0	Food and Beverage Stores	89,900	88,000	-2.1
Primary Metal Manufacturing	27,300	26,700	-2.2	Health and Personal Care	32,200	32,400	0.6
Fabricated Metal Product	82,700	82,700	0.0	Gasoline Stations	26,700	26,000	-2.6
Machinery Manufacturing	76,000	76,100	0.1	Clothing and Clothing Accessories	40,500	40,400	-0.2
Computer and Electronic Products	19,400	18,900	-2.6	Sporting Goods, Hobby, Book,			
Electrical Equipment and				and Music Stores	24,200	25,000	3.3
Appliances	14,400	13,200	-8.3	General Merchandise Stores	113,400	107,600	-5.1
Motor Vehicle Manufacturing	68,800	59,100	-14.1	Miscellaneous Store Retail	30,100	30,300	0.7
Motor Vehicle Parts				• Transportation & Warehousing	104,500	107,000	2.4
Manufacturing	166,100	157,900	-4.9	Rail Transportation	5,100	5,100	0.0
Furniture and Related Products	25,800	23,900	-7.4	Truck Transportation	36,400	38,100	4.7
Miscellaneous Manufacturing	17,500	17,600	0.6	Warehousing and Storage	15,400	15,800	2.6
• Non-Durable Goods	148,000	147,100	-0.6	Information	68,100	64,600	-5.1
Food Manufacturing	32,500	32,200	-0.9	Publishing Industries	25,000	23,500	-5.5
Paper Manufacturing	14,900	14,600	-2.0	Telecommunications	22,300	21,200	-4.9
Printing and Related Support				Financial Activities	219,500	220,400	0.4
Activities	18,300	17,800	-2.7	Finance and Insurance	161,500	163,000	0.9
Chemical Manufacturing	27,800	27,400	-1.4	Real Estate	39,800	39,600	-0.5
Plastics and Rubber Products	42,800	42,400	-0.9	Rental and Leasing Services	17,300	16,300	-5.8

Note: Industry details and subtotals may not sum to totals due to rounding.

Source: Department of Labor and Economic Growth/Office of Labor Market Information, Current Employment Statistics Section - (800) 225-3732

Employment Trends by Selected Industries in Michigan
(data not seasonally adjusted, rounded to the nearest hundred)

Industry	Avg 2004 Qtr 3	Avg 2005 Qtr 3	% Change	Industry	Avg 2004 Qtr 3	Avg 2005 Qtr 3	% Change
Professional & Business Services	593,300	587,200	-1.0	Food Services and Drinking	315,200	314,600	-0.2
Legal Services	29,500	29,400	-0.3	Other Services	180,100	181,600	0.8
Accounting and Tax Preparation	25,300	26,800	5.9	Repair and Maintenance	42,900	42,500	-0.9
Architectural Engineering	70,800	68,800	-2.8	Personal and Laundry Services	42,100	40,600	-3.6
Computer Systems Design	39,100	39,300	0.5	Religious Grantmaking Civic Professional	95,000	98,400	3.6
Management, Scientific and Technical Consulting Services	18,800	20,400	8.5	Government	628,100	621,900	-1.0
Scientific Research and Development Services	23,800	24,300	2.1	•Federal Government	55,700	55,000	-1.3
Advertising and Related	16,100	16,800	4.3	Federal Government Hospital Services	5,800	5,800	0.0
Other Professional Scientific and Technical Services	15,000	15,300	2.0	U.S. Postal Service	27,900	27,700	-0.7
Management of Companies	68,700	67,800	-1.3	•State Government	159,800	160,500	0.4
Administrative & Support Services	281,200	275,100	-2.2	State Government Educational Services	87,300	87,400	0.1
Educational and Health Services	545,000	551,100	1.1	State Government Hospital Services	14,300	15,000	4.9
•Educational Services (see also Government)	60,500	61,300	1.3	•Local Government	412,600	406,400	-1.5
•Health Care & Social Assistance	484,500	489,800	1.1	Local Government Educational Services	223,400	221,300	-0.9
Ambulatory Health Care Services	162,300	162,800	0.3	Local Government Hospitals	13,300	13,700	3.0
Offices of Physicians	64,600	64,900	0.5	Local Government Elementary and Secondary Schools	204,100	201,600	-1.2
Offices of Dentists	31,900	31,300	-1.9	Local Government Junior Colleges	18,400	19,200	4.3
Offices of Other Health Professionals	19,200	19,000	-1.0				
Outpatient Care Centers	13,500	13,700	1.5				
Home Health Care Service	24,600	24,100	-2.0				
Hospitals	179,900	187,100	4.0				
Nursing and Residential Care	86,600	85,900	-0.8				
—Nursing Care Facilities	40,600	39,500	-2.7				
—Community Care Facilities	21,200	21,100	-0.5				
Social Assistance	55,700	54,000	-3.1				
Individual and Family Services	23,700	23,400	-1.3				
Leisure and Hospitality	424,800	426,400	0.4				
Performing Arts Spectator Activities	10,600	9,400	-11.3				
Amusement, Gambling & Recreation	57,500	59,600	3.7				
Accommodation	37,800	38,200	1.1				

VISIT OUR WEBSITE FOR MORE INFORMATION!

The "Work and Wages" section of the Michigan League for Human Services website has information on Workforce Development, Work Supports, Unemployment, and Self-Sufficiency. It also includes back issues of the Economic Security Bulletin. Go to <http://www.MiLHS.org> and click the "Work and Wages" tab at the right.

Note: Industry details and subtotals may not sum to totals due to rounding.

Source: Department of Labor and Economic Growth/Office of Labor Market Information, Current Employment Statistics Section - (800) 225-3732



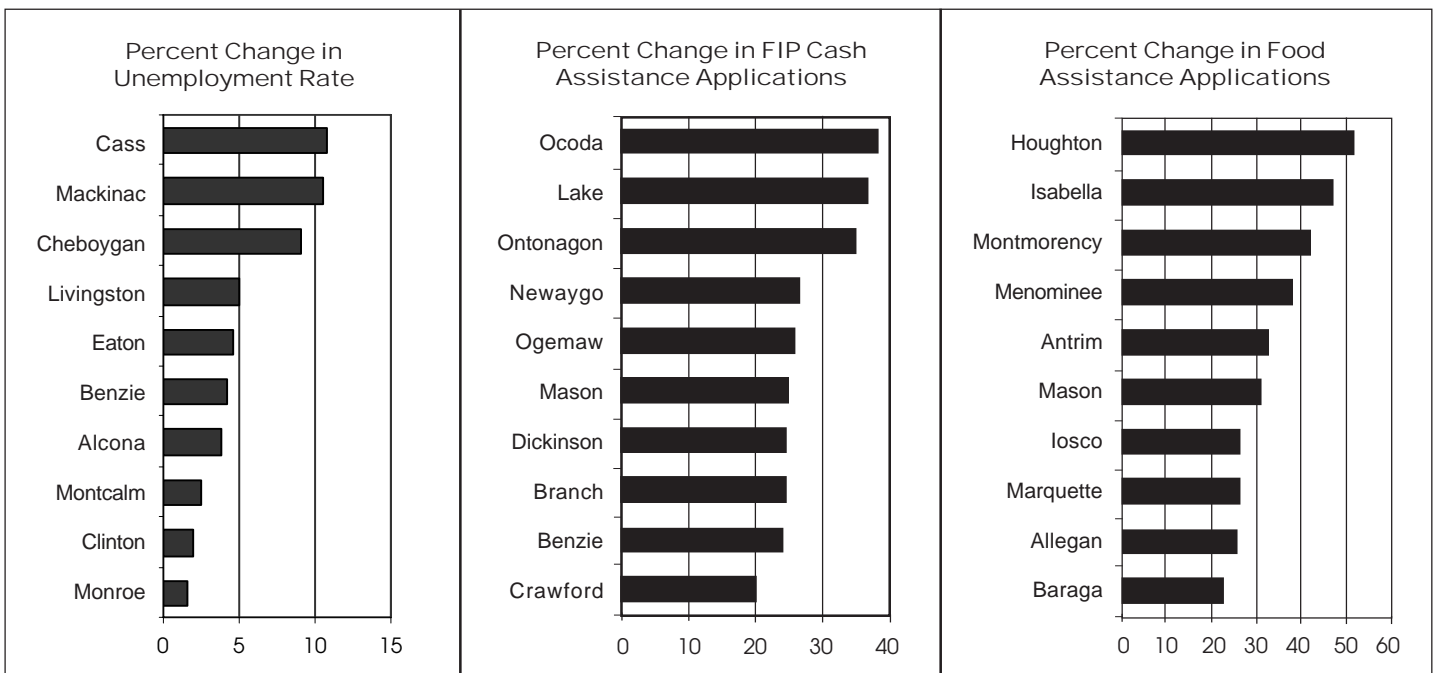
Michigan League for Human Services

1115 South Pennsylvania Avenue, Suite 202
 Lansing, MI 48912-1658
 (517) 487-5436 — Fax (517) 371-4546
 Web site: www.milhs.org

A United Way Agency

Nonprofit
 Organization
 U.S. Postage
Paid
 Lansing, MI
 Permit #1421

Percentage Change in Michigan Counties With Largest Increases
 Third Quarter 2004 — Third Quarter 2005



Sources: Unemployment: Bureau of Labor Statistics, Local Area Unemployment Statistics; Public Assistance: Michigan Department of Human Services