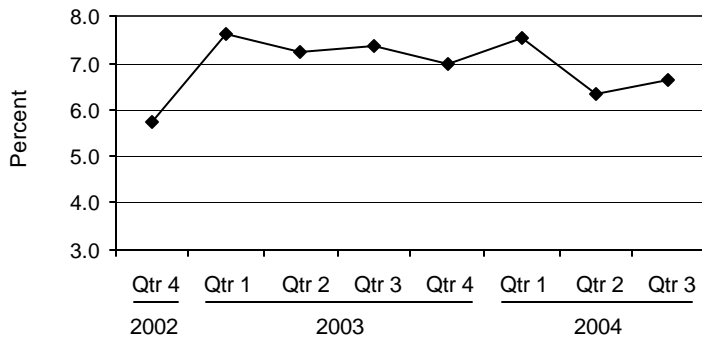


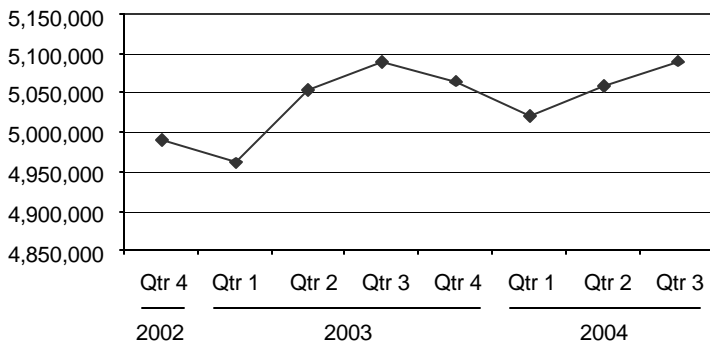


Michigan Unemployment Rate
Over the Past Two Years
(not seasonally adjusted)



Source: Bureau of Labor Statistics

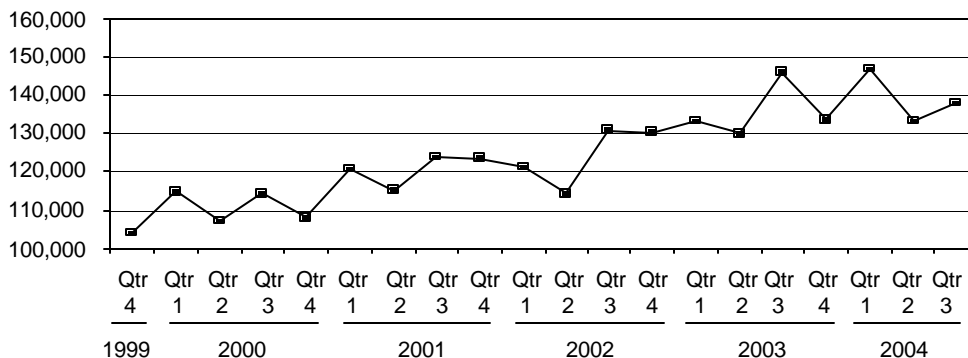
Michigan Labor Force Over the Past Two Years



Note: The 2003 figures are benchmarked from the annual data, resulting in a slight difference from previous figures for those months.

Source: Bureau of Labor Statistics

Food Assistance Applications in Michigan Over
the Past Four Years



Source: Michigan Family Independence Agency

Unemployment Down in Michigan During Third Quarter

Unemployment


During the third quarter of 2004, unemployment in Michigan was 6.6, roughly equal to the second quarter (6.4) and down from 7.4 for the same period last year. Only two lightly populated counties experienced significant rises in unemployment over the same time last year; several others saw small rises while most saw their unemployment rates fall over that time. Although each quarter of last year and the first quarter of this year saw a statewide unemployment rate above 7 percent, Quarter 2 and Quarter 3 have been below that mark, a trend that will hopefully continue.

Public Assistance

Food Assistance applications have slowly and fitfully risen over the past five years. While during each quarter of 2000 the total number of applications remained well below 120,000 statewide, the past two years have seen each quarter with a total over 130,000 and in two quarters reaching nearly 150,000. Meanwhile, the average number of households receiving Food Assistance has risen consistently each quarter during the past four years while the number receiving FIP assistance has remained for the most part between 70,000 and 80,000. The average number of Food Assistance households during Quarter 2 this year is 15.7 percent higher than the same time last year.

Sectoral Trends

Quarter 3 of 2004 saw slight decreases in the overall number of nonfarm and private jobs from the same quarter of the previous year. The largest decreases were in the motor vehicle manufacturing sector (-14.7%) and in religious organizations including faith-based charities (-16%). Warehousing and storage also saw a significant decrease of 10.2 percent.

 Prepared by: Michigan League for Human Services	Unemployment (data not seasonally adjusted)						Food Assistance Program					
	Unemployment Rate			Number Unemployed			Total Number of Applications			Average Number of Households Receiving Food Assistance Per Month		
	Qtr 3 2003	Qtr 3 2004	% change	Qtr 3 2003	Qtr 3 2004	% change	Qtr 3 2003	Qtr 3 2004	% change	Qtr 3 2003	Qtr 3 2004	% change
Michigan¹	7.4	6.6	-10.4	375,396	337,742	-10.0	146,184	137,943	-5.6	380,031	439,722	15.7
Alcona	9.6	7.2	-25.6	446	327	-26.7	111	109	-1.8	439	462	5.3
Alger	5.5	4.9	-11.5	250	225	-10.3	72	79	9.7	247	278	12.6
Allegan	6.5	6.2	-5.1	3,732	3,578	-4.1	1,197	1,075	-10.2	2,798	3,292	17.7
Alpena	8.5	6.5	-23.4	1,332	1,026	-23.0	460	456	-0.9	1,661	1,848	11.2
Antrim	8.2	6.5	-21.1	950	767	-19.3	240	209	-12.9	563	628	11.4
Arenac	8.9	8.6	-3.4	645	611	-5.3	213	202	-5.2	918	1,038	13.1
Baraga	7.6	9.9	29.7	320	429	33.8	105	106	1.0	302	382	26.6
Barry	4.9	4.1	-17.6	1,586	1,314	-17.2	577	607	5.2	1,489	1,797	20.6
Bay	7.6	7.4	-3.5	4,141	3,923	-5.3	1,368	1,342	-1.9	4,932	5,544	12.4
Benzie	6.2	5.2	-16.1	540	457	-15.3	191	219	14.7	388	524	34.8
Berrien	7.6	6.6	-12.7	6,212	5,535	-10.9	3,073	2,870	-6.6	7,818	8,708	11.4
Branch	7.2	6.5	-9.3	1,719	1,577	-8.2	655	617	-5.8	1,562	1,737	11.2
Calhoun	7.6	6.5	-14.0	5,019	4,343	-13.5	2,681	2,497	-6.9	6,977	8,275	18.6
Cass	4.9	4.0	-19.6	1,293	1,069	-17.3	691	691	0.0	2,053	2,228	8.6
Charlevoix**	7.4	6.0	-19.4	1,061	864	-18.6	**	**	**	**	**	**
Cheboygan	4.0	2.8	-29.4	515	372	-27.8	381	334	-12.3	1,031	1,227	19.1
Chippewa	6.7	5.8	-13.0	1,188	1,039	-12.6	455	441	-3.1	1,332	1,474	10.7
Clare	10.1	9.7	-3.6	1,142	1,120	-1.9	462	516	11.7	1,968	2,180	10.8
Clinton	3.8	4.3	12.3	1,382	1,548	12.0	403	440	9.2	1,160	1,328	14.5
Crawford	7.9	6.7	-16.0	455	381	-16.3	225	199	-11.6	667	699	4.9
Delta	8.0	6.4	-19.7	1,590	1,289	-18.9	428	513	19.9	1,663	1,844	10.9
Dickinson	6.3	5.1	-20.0	939	766	-18.5	350	294	-16.0	873	964	10.5
Eaton	4.0	4.1	3.4	2,337	2,411	3.2	1,037	1,129	8.9	2,601	2,948	13.3
Emmet**	5.6	5.2	-7.1	1,139	1,071	-6.0	486	470	-3.3	1,491	1,622	8.8
Genesee	10.4	8.9	-14.1	19,481	16,569	-14.9	9,535	8,893	-6.7	24,994	28,863	15.5
Gladwin	10.4	10.7	2.9	993	1,043	5.0	318	355	11.6	1,171	1,382	18.0
Gogebic	7.3	6.0	-18.6	603	488	-19.1	205	201	-2.0	826	932	12.9
Gr. Traverse**	5.7	5.2	-8.2	2,819	2,655	-5.8	1,013	1,103	8.9	2,393	2,918	21.9
Gratiot	6.9	7.3	5.8	1,371	1,472	7.4	526	510	-3.0	1,427	1,625	13.9
Hillsdale	8.6	7.8	-8.6	2,050	1,882	-8.2	511	486	-4.9	1,425	1,678	17.7
Houghton	4.8	3.8	-21.4	825	661	-19.8	341	270	-20.8	1,434	1,444	0.7
Huron	9.7	7.9	-18.6	1,749	1,431	-18.2	263	281	6.8	1,347	1,456	8.1
Ingham	5.6	5.8	4.2	8,638	8,907	3.1	5,192	4,603	-11.3	10,788	13,064	21.1
Ionia	7.5	7.2	-4.0	2,113	2,040	-3.5	679	731	7.7	2,000	2,328	16.4
Iosco	9.0	7.2	-20.4	974	780	-19.9	369	305	-17.3	1,465	1,674	14.3
Iron	5.4	5.1	-6.7	302	287	-5.2	118	116	-1.7	544	549	1.0
Isabella	4.0	3.4	-14.3	1,327	1,152	-13.2	590	580	-1.7	2,003	2,244	12.0
Jackson	8.2	6.6	-19.5	6,574	5,199	-20.9	2,521	2,255	-10.6	5,782	6,703	15.9
Kalamazoo	5.7	5.3	-7.0	7,425	6,987	-5.9	3,526	3,585	1.7	9,188	11,027	20.0
Kalkaska	8.0	6.7	-17.0	679	569	-16.2	251	258	2.8	728	817	12.1
Kent	8.0	6.4	-20.0	26,587	21,390	-19.5	8,596	9,031	5.1	21,265	24,671	16.0
Keweenaw	6.8	9.6	41.7	59	88	50.0	6	39	550.0	60	153	154.1
Lake	10.5	10.3	-1.3	410	397	-3.3	217	212	-2.3	906	1,015	12.0
Lapeer	8.1	7.0	-14.0	3,660	3,094	-15.5	680	730	7.4	1,781	2,037	14.4
Leelanau**	3.8	3.1	-19.1	478	389	-18.7	**	**	**	**	**	**

¹In some cases the Michigan number is slightly different from the county total.

*Percent change cannot be calculated.

**Public Assistance data for Charlevoix is combined with and reported as Emmet, Public Assistance data for Leelanau is combined with and reported as Grand Traverse, and Public Assistance data for Missaukee is combined with and reported as Wexford.

Data sources: Unemployment: Bureau of Labor Statistics, Local Area Unemployment Statistics; Public Assistance: Michigan Family Independence Agency.

Family Independence Program (Cash Assistance)

Total Number of Applications			Average Number of Families Receiving Cash Assistance Per Month			Application Approvals : Unemployment Benefits Exhausted, Layoff or Discharge, Depleted Savings, Non-Exempt Property or Loss of Other Resources			Total Number of Denials		Income Exceeds Standards as Percent of Denials		Percent of Cases Without Earned Income, Out of Total Cases Expected to Work	
Qtr 3 2003	Qtr 3 2004	% change	Qtr 3 2003	Qtr 3 2004	% change	Qtr 3 2003	Qtr 3 2004	% change	Qtr 3 2003	Qtr 3 2004	Qtr 3 2003	Qtr 3 2004	Qtr 3 2003	Qtr 3 2004
51,241	51,448	0.4	76,955	77,612	0.9	2,483	2,476	-0.3	22,649	22,297	45.9	45.3	65%	66%
50	40	-20.0	35	37	4.7	0	0	*	17	14	58.8	64.3	33%	67%
39	42	7.7	25	23	-9.3	2	1	-50.0	16	18	75.0	61.1	67%	17%
514	478	-7.0	356	359	0.8	54	46	-14.8	257	218	54.5	54.6	61%	46%
165	149	-9.7	172	168	-2.7	25	29	16.0	66	54	66.7	55.6	31%	29%
92	97	5.4	49	58	18.2	0	0	*	47	44	72.3	68.2	0%	30%
73	76	4.1	96	97	1.4	3	1	-66.7	33	38	42.4	47.4	50%	30%
46	36	-21.7	54	58	8.0	0	1	*	16	8	37.5	25.0	54%	54%
210	242	15.2	227	227	-0.1	46	51	10.9	74	94	56.8	55.3	42%	49%
576	559	-3.0	683	759	11.0	45	42	-6.7	224	201	42.4	47.8	53%	49%
67	67	0.0	39	42	8.5	11	5	-54.5	30	38	70.0	65.8	21%	37%
1,297	1,190	-8.2	1,494	1,283	-14.1	24	33	37.5	590	592	45.1	44.1	36%	53%
312	278	-10.9	259	249	-3.7	35	31	-11.4	140	147	62.1	40.1	62%	58%
1,098	1,148	4.6	1,341	1,353	0.9	68	67	-1.5	483	505	50.3	50.1	65%	65%
254	272	7.1	304	288	-5.4	16	12	-25.0	92	97	52.2	49.5	54%	57%
**	**	**	**	**	**	**	**	**	**	**	**	**	**	**
121	126	4.1	102	108	6.6	13	6	-53.8	54	60	61.1	70.0	65%	83%
161	164	1.9	158	166	5.1	16	8	-50.0	73	56	42.5	42.9	75%	57%
222	253	14.0	258	291	12.6	9	21	133.3	117	111	46.2	45.0	53%	51%
179	186	3.9	131	133	1.3	10	19	90.0	88	100	58.0	62.0	52%	58%
107	84	-21.5	79	71	-10.9	4	4	0.0	43	33	55.8	60.6	33%	52%
172	155	-9.9	146	153	4.8	6	10	66.7	58	67	56.9	58.2	32%	49%
139	89	-36.0	90	68	-25.1	18	12	-33.3	74	40	59.5	60.0	10%	67%
445	486	9.2	346	336	-2.7	27	19	-29.6	214	247	46.3	43.3	55%	52%
145	147	1.4	116	117	0.9	4	9	125.0	97	72	59.8	52.8	19%	21%
4,112	3,835	-6.7	6,397	6,585	2.9	158	158	0.0	1,931	1,651	40.4	42.6	59%	59%
132	162	22.7	131	120	-8.4	7	10	42.9	58	74	55.2	51.4	52%	61%
82	69	-15.9	127	123	-3.2	9	5	-44.4	23	19	73.9	73.7	39%	54%
324	378	16.7	201	182	-9.1	23	9	-60.9	154	198	54.5	60.1	45%	72%
266	266	0.0	192	200	4.0	22	18	-18.2	137	136	53.3	46.3	55%	44%
246	235	-4.5	199	164	-17.3	15	26	73.3	110	109	60.0	43.1	53%	53%
82	67	-18.3	109	96	-11.6	6	3	-50.0	26	20	61.5	80.0	43%	44%
76	87	14.5	112	111	-1.2	11	12	9.1	24	33	62.5	78.8	66%	50%
1,636	1,631	-0.3	1,586	1,660	4.6	66	69	4.5	846	792	41.1	40.9	39%	65%
337	342	1.5	254	263	3.8	15	14	-6.7	153	142	44.4	49.3	67%	64%
146	139	-4.8	123	142	16.0	3	6	100.0	62	58	51.6	50.0	49%	40%
48	49	2.1	63	69	8.9	9	2	-77.8	18	21	55.6	33.3	28%	25%
268	279	4.1	251	259	3.1	12	4	-66.7	126	113	46.8	55.8	72%	69%
970	878	-9.5	1,196	1,107	-7.5	57	33	-42.1	444	400	46.2	38.0	72%	69%
1,383	1,455	5.2	1,729	1,758	1.7	67	66	-1.5	529	588	38.2	38.4	74%	67%
91	102	12.1	72	70	-2.8	9	15	66.7	27	29	33.3	41.4	36%	39%
3,290	3,397	3.3	4,508	4,454	-1.2	169	195	15.4	1,378	1,478	48.2	47.8	48%	38%
2	10	400.0	1	7	425.0	0	1	*	2	3	*	*	0%	0%
101	76	-24.8	152	148	-2.9	8	5	-37.5	27	16	37.0	25.0	47%	69%
324	321	-0.9	249	236	-5.2	17	6	-64.7	151	159	46.4	61.0	47%	55%
**	**	**	**	**	**	**	**	**	0	**	**	**	**	**

¹In some cases the Michigan number is slightly different from the county total.

*Percent change cannot be calculated.

**Public Assistance data for Charlevoix is combined with and reported as Emmet, Public Assistance data for Leelanau is combined with and reported as Grand Traverse, and Public Assistance data for Missaukee is combined with and reported as Wexford.

Data sources: Unemployment: Bureau of Labor Statistics, Local Area Unemployment Statistics; Public Assistance: Michigan Family Independence Agency.

County	Unemployment (data not seasonally adjusted)						Food Assistance Program					
	Unemployment Rate			Number Unemployed			Total Number of Applications			Average Number of Households Receiving Food Assistance Per Month		
	Qtr 3 2003	Qtr 3 2004	% change	Qtr 3 2003	Qtr 3 2004	% change	Qtr 3 2003	Qtr 3 2004	% change	Qtr 3 2003	Qtr 3 2004	% change
Lenawee	8.3	7.0	-15.3	3,889	3,353	-13.8	1,164	1,044	-10.3	2,700	2,987	10.6
Livingston	4.0	3.6	-9.9	3,449	3,203	-7.2	703	768	9.2	1,520	1,809	19.0
Luce	6.1	5.3	-13.0	174	155	-11.3	102	110	7.8	414	418	1.0
Mackinac	1.7	1.5	-11.8	153	140	-8.3	75	83	10.7	220	230	4.6
Macomb	6.9	6.7	-2.9	30,490	29,633	-2.8	6,692	7,026	5.0	17,207	21,074	22.5
Manistee	8.0	6.9	-13.8	928	806	-13.2	304	307	1.0	1,097	1,186	8.1
Marquette	5.6	4.5	-20.2	1,852	1,487	-19.7	651	571	-12.3	2,036	2,350	15.4
Mason	10.8	7.4	-31.4	1,742	1,181	-32.2	404	327	-19.1	1,219	1,374	12.7
Mecosta	6.0	5.8	-3.9	1,101	1,047	-4.9	575	615	7.0	1,860	2,187	17.6
Menominee	6.9	5.7	-17.0	827	694	-16.0	271	212	-21.8	955	961	0.7
Midland	5.7	5.3	-7.0	2,476	2,255	-8.9	670	740	10.4	2,462	2,884	17.1
Missaukee**	6.8	6.1	-10.2	459	419	-8.6	**	**	**	**	**	**
Monroe	7.9	6.1	-22.7	6,066	4,590	-24.3	1,275	1,247	-2.2	3,472	4,018	15.7
Montcalm	9.1	8.3	-8.8	2,378	2,188	-8.0	678	739	9.0	2,246	2,539	13.1
Montmorency	9.9	9.5	-4.0	383	371	-3.0	122	110	-9.8	549	578	5.2
Muskegon	11.0	8.3	-24.5	9,189	6,875	-25.2	3,511	3,301	-6.0	10,329	11,899	15.2
Newaygo	9.8	7.8	-21.0	2,136	1,697	-20.5	677	564	-16.7	2,054	2,323	13.1
Oakland	5.3	5.1	-4.4	35,750	34,072	-4.7	10,273	9,912	-3.5	21,395	24,179	13.0
Oceana	8.0	6.3	-20.8	1,236	956	-22.7	479	455	-5.0	1,570	1,681	7.1
Ogemaw	7.9	6.3	-19.9	755	617	-18.3	290	382	31.7	1,384	1,562	12.9
Ontonagon	7.3	6.4	-12.7	207	187	-10.0	69	78	13.0	303	331	9.1
Osceola	8.4	7.5	-11.1	890	801	-10.0	325	280	-13.8	1,127	1,328	17.8
Oscoda	11.8	11.4	-3.4	411	387	-5.7	156	137	-12.2	526	576	9.4
Otsego	7.2	5.8	-19.5	1,011	820	-18.9	255	274	7.5	928	1,040	12.0
Ottawa	6.3	5.0	-20.1	8,875	7,132	-19.6	1,719	1,657	-3.6	3,961	4,746	19.8
Presque Isle	8.1	7.1	-12.4	538	474	-11.8	127	100	-21.3	449	498	10.9
Roscommon	8.3	8.2	-0.8	741	743	0.2	295	386	30.8	1,510	1,642	8.7
Saginaw	9.9	8.5	-13.8	10,120	8,417	-16.8	3,737	3,709	-0.7	11,729	13,321	13.6
Saint Clair	9.1	7.8	-14.2	7,673	6,504	-15.2	2,257	2,144	-5.0	5,933	6,695	12.9
Saint Joseph	8.8	6.2	-29.8	2,870	1,966	-31.5	1,023	890	-13.0	2,652	2,824	6.5
Sanilac	11.0	9.2	-16.6	2,265	1,879	-17.0	463	488	5.4	1,895	2,073	9.4
Schoolcraft	7.3	6.6	-10.0	330	301	-8.7	106	98	-7.5	434	458	5.5
Shiawassee	8.2	8.2	0.4	2,806	2,856	1.8	825	911	10.4	2,484	2,819	13.5
Tuscola	9.7	8.5	-12.3	2,776	2,464	-11.2	560	596	6.4	1,835	2,064	12.4
Van Buren	7.8	6.7	-13.7	2,837	2,466	-13.1	1,608	1,531	-4.8	4,016	4,409	9.8
Washtenaw	3.5	3.2	-6.7	6,169	5,925	-4.0	2,709	2,838	4.8	6,274	7,667	22.2
Wayne	9.5	9.0	-4.9	88,899	84,036	-5.5	49,151	42,719	-13.1	120,634	140,911	16.8
Wexford**	9.9	7.5	-24.2	1,496	1,129	-24.6	565	635	12.4	2,193	2,479	13.0

FACT

The state of Michigan had 85,700 fewer manufacturing jobs in September 2004 than in November 2001 when the recession officially ended—a decline of 10.9%.

¹In some cases the Michigan number is slightly different from the county total.

*Percent change cannot be calculated.

**Public Assistance data for Charlevoix is combined with and reported as Emmet, Public Assistance data for Leelanau is combined with and reported as Grand Traverse, and Public Assistance data for Missaukee is combined with and reported as Wexford.

Data sources: Unemployment: Bureau of Labor Statistics, Local Area Unemployment Statistics; Public Assistance: Michigan Family Independence Agency.

Family Independence Program (Cash Assistance)

Total Number of Applications			Average Number of Families Receiving Cash Assistance Per Month			Application Approvals : Unemployment Benefits Exhausted, Layoff or Discharge, Depleted Savings, Non-Exempt Property or Loss of Other Resources			Total Number of Denials		Income Exceeds Standards as Percent of Denials		Percent of Cases Without Earned Income, Out of Total Cases Expected to Work	
Qtr 3 2003	Qtr 3 2004	% change	Qtr 3 2003	Qtr 3 2004	% change	Qtr 3 2003	Qtr 3 2004	% change	Qtr 3 2003	Qtr 3 2004	Qtr 3 2003	Qtr 3 2004	Qtr 3 2003	Qtr 3 2004
412	408	-1.0	366	370	1.1	14	10	-28.6	191	192	53.4	44.3	38%	49%
283	317	12.0	160	145	-9.4	13	17	30.8	147	188	61.2	62.2	39%	47%
44	51	15.9	51	39	-23.4	1	0	-100.0	22	25	63.6	64.0	63%	60%
26	36	38.5	22	22	-3.0	2	1	-50.0	14	22	71.4	59.1	17%	33%
2,232	2,362	5.8	2,234	2,384	6.7	116	117	0.9	1,062	1,165	52.0	51.9	64%	65%
126	121	-4.0	116	115	-1.1	22	7	-68.2	38	47	44.7	48.9	54%	66%
181	167	-7.7	238	244	2.2	13	10	-23.1	58	53	53.4	58.5	62%	61%
157	133	-15.3	190	188	-1.2	18	10	-44.4	47	36	57.4	47.2	40%	38%
243	190	-21.8	202	202	0.2	8	2	-75.0	107	79	46.7	46.8	54%	77%
107	82	-23.4	95	74	-21.8	8	6	-25.0	35	37	45.7	48.6	52%	100%
289	309	6.9	320	341	6.5	27	27	0.0	138	142	66.7	56.3	46%	49%
**	**	**	**	**	**	**	**	**	**	**	**	**	**	**
547	566	3.5	583	580	-0.4	23	19	-17.4	263	256	43.7	44.5	59%	71%
324	355	9.6	298	271	-9.1	24	22	-8.3	156	176	48.1	51.1	58%	66%
44	43	-2.3	45	46	2.2	5	1	-80.0	22	21	63.6	71.4	53%	41%
1,328	1,312	-1.2	2,649	2,653	0.2	61	82	34.4	507	468	52.1	50.9	71%	70%
257	213	-17.1	285	266	-6.8	17	20	17.6	79	73	36.7	46.6	59%	68%
3,127	3,047	-2.6	3,282	3,351	2.1	113	116	2.7	1,672	1,609	46.8	45.2	62%	62%
191	152	-20.4	294	299	1.7	38	26	-31.6	72	44	63.9	56.8	55%	55%
115	117	1.7	133	148	11.0	12	18	50.0	39	44	66.7	61.4	39%	59%
21	20	-4.8	34	36	5.8	3	2	-33.3	13	7	76.9	85.7	29%	41%
143	128	-10.5	159	157	-1.5	12	5	-58.3	51	53	60.8	58.5	58%	71%
45	42	-6.7	60	50	-17.1	8	7	-12.5	11	19	81.8	52.6	39%	33%
124	109	-12.1	73	71	-2.8	5	4	-20.0	64	54	65.6	61.1	33%	45%
575	566	-1.6	463	456	-1.5	15	15	0.0	230	243	53.0	49.4	61%	61%
41	47	14.6	27	30	12.3	0	1	*	15	16	60.0	43.8	33%	0%
137	151	10.2	157	151	-4.0	6	5	-16.7	60	52	46.7	40.4	42%	48%
1,500	1,551	3.4	3,257	3,070	-5.7	102	143	40.2	695	739	45.6	41.5	49%	52%
878	843	-4.0	1,056	1,014	-4.0	51	69	35.3	322	372	40.7	45.2	63%	66%
430	346	-19.5	369	304	-17.7	24	19	-20.8	219	146	47.5	41.1	69%	58%
197	205	4.1	236	238	0.7	53	38	-28.3	88	92	46.6	48.9	56%	53%
37	51	37.8	52	52	0.0	4	2	-50.0	14	15	35.7	46.7	47%	73%
370	387	4.6	266	290	8.8	19	14	-26.3	154	195	44.2	51.3	40%	38%
232	243	4.7	248	229	-7.7	13	24	84.6	106	107	47.2	48.6	44%	57%
596	559	-6.2	679	600	-11.7	56	39	-30.4	287	226	51.9	51.8	56%	53%
912	959	5.2	1,146	1,204	5.1	17	19	11.8	394	445	43.1	41.3	63%	70%
14,299	14,855	3.9	32,613	33,406	2.4	433	455	5.1	5,998	5,831	40.7	39.7	71%	71%
271	263	-3.0	280	317	13.1	8	20	150.0	130	115	50.0	53.0	63%	65%

FACT

Michigan's unemployment rate (seasonally adjusted) for November was 7 percent, its highest level during 2004 and more than a point and a half above the national rate of 5.4 percent.

¹In some cases the Michigan number is slightly different from the county total.

*Percent change cannot be calculated.

**Public Assistance data for Charlevoix is combined with and reported as Emmet, Public Assistance data for Leelanau is combined with and reported as Grand Traverse, and Public Assistance data for Missaukee is combined with and reported as Wexford.

Data sources: Unemployment: Bureau of Labor Statistics, Local Area Unemployment Statistics; Public Assistance: Michigan Family Independence Agency.

Employment Trends by Selected Industries in Michigan
(data not seasonally adjusted, rounded to the nearest hundred)

Industry	Avg 2003 Qtr 3	Avg 2004 Qtr 3	% Change	Industry	Avg 2003 Qtr 3	Avg 2004 Qtr 3	% Change
TOTAL NONFARM	4,391,200	4,345,300	-1.1	Trade Transportation & Utilities	817,200	803,700	-1.7
TOTAL PRIVATE	3,764,600	3,730,200	-0.9	•Wholesale Trade	173,700	175,100	0.8
GOODS PRODUCING	933,800	911,400	-2.5	•Retail Trade	517,600	502,900	-2.9
SERVICE-PROVIDING	3,457,400	3,433,800	-0.7	Motor Vehicle and Parts Dealers	62,600	63,700	1.7
Natural Resources and Mining	8,400	8,100	-3.7	Furniture and Home Furnishings	18,500	18,100	-2.2
Mining	6,600	6,400	-3.1	Electronics and Appliance	16,500	16,000	-3.1
Mining except oil and gas	4,600	4,500	-2.2	Building Material and Supplies Dealers	41,300	40,200	-2.7
Construction	205,900	206,200	0.1	Food and Beverage Stores	90,700	89,700	-1.1
Construction of Buildings	46,800	49,600	5.6	Health and Personal Care	32,800	32,000	-2.5
Heavy and Civil Engineering	20,700	21,100	1.9	Gasoline Stations	27,300	27,300	0.0
Specialty Trade Contractors	138,400	135,500	-2.1	Clothing and Clothing Accessories	38,500	38,600	0.3
Manufacturing	719,500	697,100	-3.2	Sporting Goods, Hobby, Book, and Music Stores	24,000	23,800	-0.8
•Durable Goods	567,200	546,900	-3.7	General Merchandise Stores	118,200	113,400	-4.2
Wood Product Manufacturing	11,900	11,200	-6.3	Miscellaneous Store Retail	30,700	29,400	-4.4
Nonmetallic Mineral Products	18,000	17,900	-0.6	•Transportation & Warehousing	105,400	108,100	2.5
Primary Metal Manufacturing	26,900	26,600	-1.1	Rail Transportation	4,600	4,600	0.0
Fabricated Metal Product	81,000	82,800	2.2	Truck Transportation	36,100	37,400	3.5
Machinery Manufacturing	75,400	75,600	0.3	Warehousing and Storage	15,100	13,700	-10.2
Computer and Electronic Products	19,400	19,200	-1.0	Information	70,300	67,000	-4.9
Electrical Equipment and Appliances	14,900	14,900	0.0	Publishing Industries	26,000	24,100	-7.9
Motor Vehicle Manufacturing	79,800	69,600	-14.7	Telecommunications	23,300	22,100	-5.4
Motor Vehicle Parts Manufacturing	173,700	165,200	-5.1	Financial Activities	222,300	216,600	-2.6
Furniture and Related Products	26,600	25,900	-2.7	Finance and Insurance	164,200	157,100	-4.5
Miscellaneous Manufacturing	18,300	16,900	-8.3	Real Estate	39,500	40,500	2.5
•Non-Durable Goods	152,300	150,200	-1.4	Rental and Leasing Services	17,400	17,600	1.1
Food Manufacturing	33,100	33,000	-0.3				
Paper Manufacturing	15,600	15,600	0.0				
Printing and Related Support Activities	19,200	18,900	-1.6				
Chemical Manufacturing	29,400	28,700	-2.4				
Plastics and Rubber Products	42,600	43,800	2.7				

Would you like to receive
our Economic Security Bulletin
by E-mail?

Send your request to
pruark@mlan.net.

Note: Industry details and subtotals may not sum to totals due to rounding.

Source: Department of Labor and Economic Growth/Office of Labor Market Information, Current Employment Statistics Section - (800) 225-3732

Employment Trends by Selected Industries in Michigan
(data not seasonally adjusted, rounded to the nearest hundred)

Industry	Avg 2003 Qtr 3	Avg 2004 Qtr 3	% Change	Industry	Avg 2003 Qtr 3	Avg 2004 Qtr 3	% Change
Professional & Business Services	593,700	595,200	0.3	Other Services	171,100	175,600	2.6
Legal Services	29,200	28,600	-2.1	Repair and Maintenance	41,900	41,200	-1.7
Accounting and Tax Preparation	26,800	25,000	-7.2	Personal and Laundry Services	40,400	39,900	-1.3
Architectural Engineering	71,300	75,400	5.4	Religious Organizations	52,900	45,600	-16.0
Computer Systems Design	38,100	38,600	1.3	Government	626,600	615,100	-1.9
Advertising and Related	16,000	16,100	0.6	• Federal Government	56,100	55,500	-1.1
Management of Companies	68,300	67,200	-1.6	Federal Government Hospital			
Administrative and Support Services	279,300	281,200	0.7	Services	5,800	6,000	3.3
Educational and Health Services	536,300	538,700	0.4	U.S. Postal Service	28,400	27,600	-2.9
• Educational Services	67,800	66,700	-1.6	• State Government	156,300	156,900	0.4
(see also Government)				State Government Educational			
• Health Care & Social Assistance	468,500	472,000	0.7	Services	84,800	85,000	0.2
Ambulatory Health Care Services	156,500	157,300	0.5	State Government Hospital			
Offices of Physicians	62,300	62,900	1.0	Services	13,800	14,600	5.5
Offices of Dentists	31,500	31,300	-0.6	• Local Government	414,200	402,600	-2.9
Offices of Other Health Professionals	18,500	19,400	4.6	Local Government Educational			
Home Health Care Service	22,700	23,700	4.2	Services	228,800	221,400	-3.3
Hospitals	179,100	179,000	-0.1	Local Government Hospitals	13,300	13,400	0.7
Nursing and Residential Care	85,200	87,100	2.2	Local Government Elementary			
Nursing Care Facilities	40,100	40,200	0.2	and Secondary Schools	210,300	201,400	-4.4
Community Care Facilities	21,500	22,600	4.9	Local Government Junior Colleges	18,300	19,100	4.2
Social Assistance	47,700	48,600	1.9				
Individual and Family Services	21,700	21,900	0.9				
Leisure and Hospitality	419,800	421,900	0.5				
Performing Arts Spectator Activities	10,600	9,900	-7.1				
Amusement, Gambling and Recreation	58,300	54,800	-6.4				
Accommodation	38,100	39,600	3.8				
Food Services and Drinking	309,100	314,100	1.6				

VISIT OUR WEBSITE FOR MORE INFORMATION!

The "Work and Wages" section of the Michigan League for Human Services website has information on Workforce Development, Work Supports, Unemployment, and Self-Sufficiency. It also includes back issues of the Economic Security Bulletin. Go to <http://www.MiLHS.org> and click the "Work and Wages" tab at the right.

Note: Industry details and subtotals may not sum to totals due to rounding.

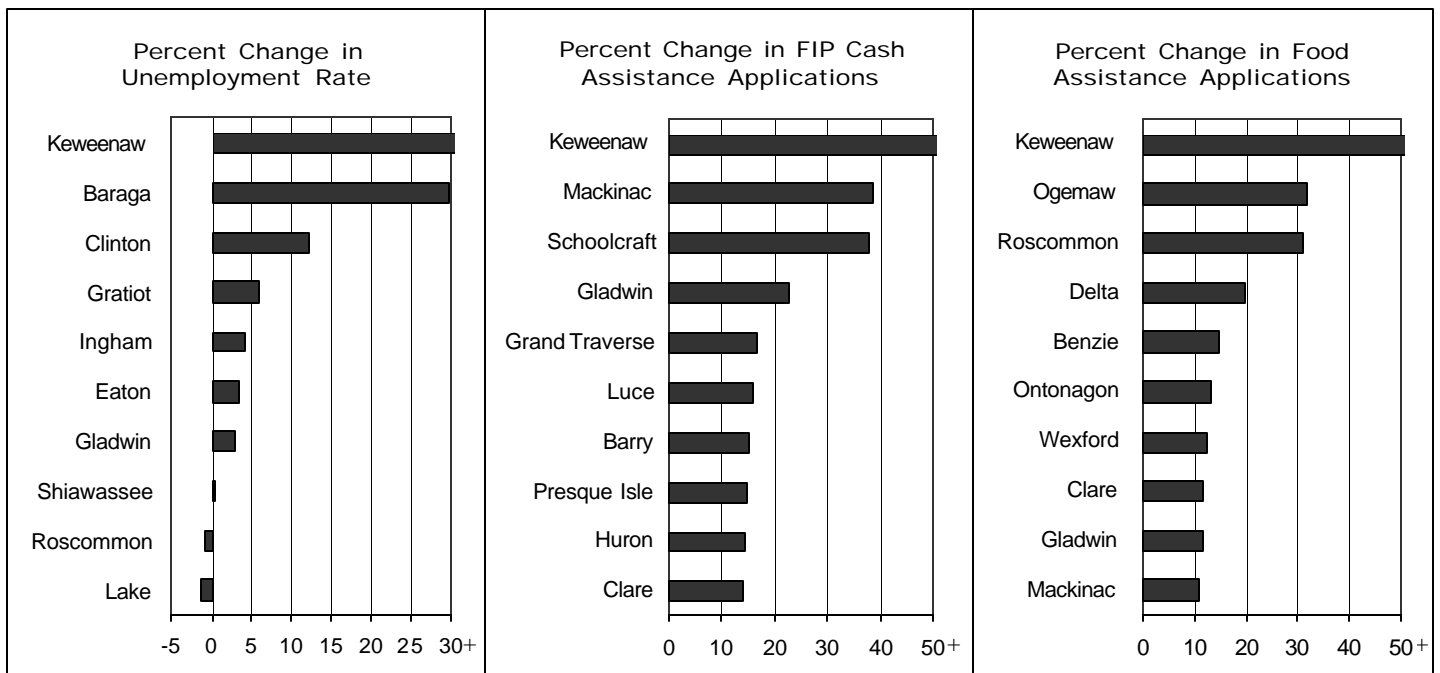
Source: Department of Labor and Economic Growth/Office of Labor Market Information, Current Employment Statistics Section - (800) 225-3732



Michigan League for Human Services
 1115 South Pennsylvania Avenue, Suite 202
 Lansing, MI 48912-1658
 (517) 487-5436 — Fax (517) 371-4546
 Web site: www.milhs.org
A United Way Agency

*Nonprofit
 Organization*
 U.S. Postage
Paid
 Lansing, MI
 Permit #1421

Percentage Change in Michigan Counties With Largest Increases Third Quarter 2003 — Third Quarter 2004



Sources: Unemployment: Bureau of Labor Statistics, Local Area Unemployment Statistics; Public Assistance: Michigan Family Independence Agency