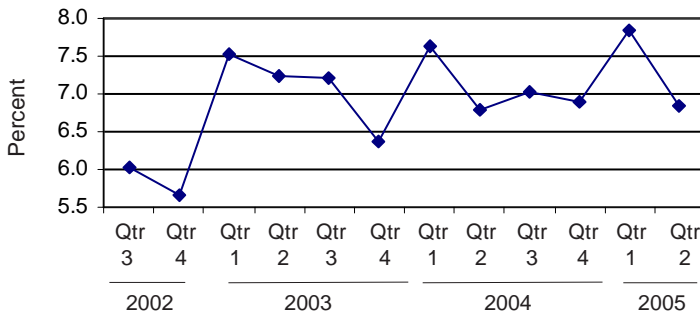


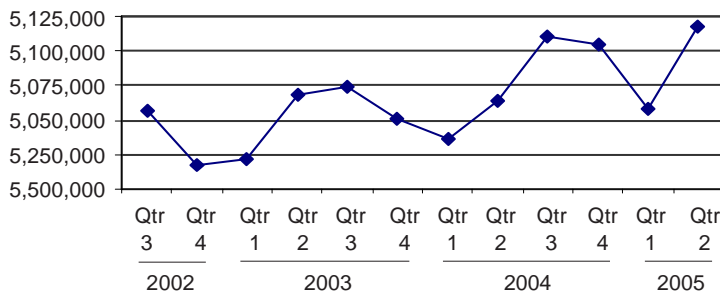


Michigan's Unemployment Rate  
Over the Past Three Years  
(not seasonally adjusted)



Source: Bureau of Labor Statistics

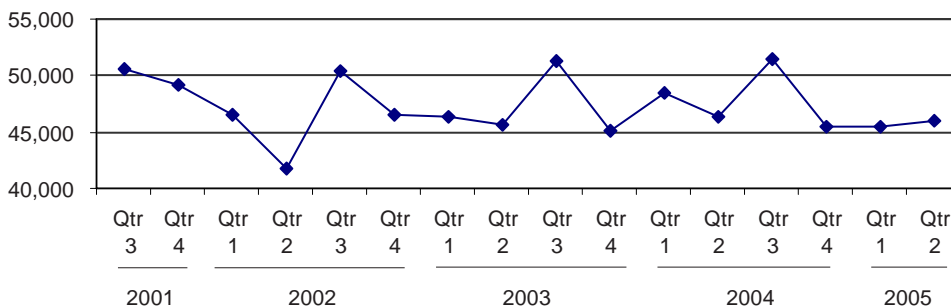
Michigan Labor Force Over  
the Past Three Years



**Note:** The 2003 figures are benchmarked from the annual data, resulting in a slight difference from previous figures for those months.

Source: Bureau of Labor Statistics

Family Independence Program (FIP) Applications in Michigan  
Over the Past Four Years



Source: Michigan Family Independence Agency

## Labor Force Rebounds and Unemployment Drops in Second Quarter 2005

### Unemployment


In the second quarter unemployment dropped by a full percentage point from the previous quarter to 6.8. This brings the rate back to what it was at the same time a year ago. Along with the drop in unemployment there was a promising surge in the labor force, up 58,645 over the previous quarter. This is consistent with the growth seen at the same time last year but is somewhat more dramatic. During the second quarter, Michigan's unemployment fell from highest to second-highest among the fifty states (Mississippi is now leading in unemployment).

### Public Assistance

The number of food assistance households showed continued growth as it has for the past five years. 474,334 households were receiving assistance during second quarter as opposed to only 422,431 at the same time last year, representing a 12.3 percent increase. Over the same time period there was a slight increase of 1.2 percent in applications for Food Assistance. FIP caseloads, meanwhile, continued to hover close to 78,000, as they did over the previous several quarters, and FIP applications remained just over 45,000 for the third quarter in a row.

### Sectoral Trends

The motor vehicle manufacturing industry continued to see a substantial decrease, with jobs down by 12.7 percent from the second quarter of 2004. Educational services also saw a significant drop in number of jobs over the same time last year (5,400). Warehousing and storage, and mining (except oil and gas), saw respective increases of 5.3 and 6.5 percent over the same quarter last year.

 Prepared by: Michigan League for Human Services	Unemployment (data not seasonally adjusted)						Food Assistance Program					
	Unemployment Rate			Number Unemployed			Total Number of Applications			Average Number of Households Receiving Food Assistance Per Month		
	County	Qtr 2 2004	Qtr 2 2005	% change	Qtr 2 2004	Qtr 2 2005	% change	Qtr 2 2004	Qtr 2 2005	% change	Qtr 2 2004	Qtr 2 2005
<b>Michigan<sup>1</sup></b>	<b>6.8</b>	<b>6.8</b>	<b>0.5</b>	<b>344,145</b>	<b>350,021</b>	<b>1.7</b>	<b>133,162</b>	<b>134,817</b>	<b>1.2</b>	<b>422,431</b>	<b>474,334</b>	<b>12.3</b>
Alcona	10.1	9.4	-7.2	430	405	-5.9	87	89	2.3	471	506	7.5
Alger	8.5	7.8	-7.8	376	354	-5.8	62	56	-9.7	287	289	0.8
Allegan	6.5	6.2	-4.6	3,497	3,384	-3.2	1,049	1,146	9.2	3,122	3,547	13.6
Alpena	8.4	7.1	-15.5	1,291	1,122	-13.1	425	407	-4.2	1,860	1,994	7.2
Antrim	7.6	7.4	-2.6	932	935	0.3	210	257	22.4	658	774	17.5
Arenac	9.6	8.9	-6.9	760	709	-6.7	197	246	24.9	998	1,041	4.3
Baraga	11.7	11.7	0.6	468	486	3.9	112	122	8.9	380	413	8.7
Barry	5.8	5.2	-10.3	1,765	1,603	-9.2	538	568	5.6	1,724	1,971	14.3
Bay	7.6	7.1	-6.1	4,338	4,070	-6.2	1,313	1,246	-5.1	5,436	6,028	10.9
Benzie	6.9	6.9	0.0	619	639	3.2	213	205	-3.8	514	541	5.3
Berrien	7.6	7.0	-8.7	6,001	5,532	-7.8	3,065	2,772	-9.6	8,362	9,213	10.2
Branch	7.1	6.5	-8.9	1,656	1,552	-6.3	633	640	1.1	1,721	1,828	6.2
Calhoun	7.0	6.5	-6.2	5,100	4,895	-4.0	2,395	2,509	4.8	7,940	8,850	11.5
Cass	4.3	4.8	11.5	1,158	1,357	17.2	634	690	8.8	2,158	2,421	12.2
Charlevoix**	7.5	7.0	-7.1	1,079	1,014	-6.1	**	170	*	**	686	*
Cheboygan	8.3	7.7	-6.5	1,057	1,026	-2.9	339	319	-5.9	1,264	1,390	10.0
Chippewa	9.0	8.6	-4.1	1,560	1,537	-1.5	429	395	-7.9	1,436	1,593	10.9
Clare	9.4	9.1	-3.9	1,281	1,262	-1.5	419	430	2.6	2,150	2,383	10.8
Clinton	4.8	5.0	5.6	1,736	1,880	8.3	420	419	-0.2	1,255	1,427	13.7
Crawford	7.2	6.8	-6.0	499	484	-3.0	186	189	1.6	715	759	6.1
Delta	7.9	7.3	-8.0	1,621	1,516	-6.5	433	455	5.1	1,862	1,957	5.1
Dickinson	6.6	5.7	-13.6	964	851	-11.7	283	293	3.5	950	979	3.0
Eaton	5.1	5.5	7.9	2,966	3,264	10.0	846	1,016	20.1	2,820	3,168	12.4
Emmet**	7.8	7.7	-1.7	1,550	1,536	-0.9	426	337	-20.9	1,659	1,129	-31.9
Genesee	8.1	7.9	-2.9	17,288	17,038	-1.4	8,695	8,577	-1.4	27,642	31,171	12.8
Gladwin	10.3	9.6	-7.1	1,169	1,103	-5.7	272	276	1.5	1,360	1,528	12.4
Gogebic	9.2	8.7	-5.1	716	687	-4.1	216	228	5.6	922	1,006	9.0
Gr. Traverse**	6.2	5.5	-12.3	3,015	2,731	-9.4	963	991	2.9	2,790	2,882	3.3
Gratiot	7.0	8.0	13.8	1,444	1,672	15.8	404	489	21.0	1,564	1,779	13.7
Hillsdale	8.0	7.2	-10.0	1,833	1,664	-9.2	418	467	11.7	1,636	1,773	8.4
Houghton	6.7	6.7	-0.5	1,138	1,170	2.8	247	305	23.5	1,451	1,563	7.7
Huron	8.5	7.2	-14.9	1,499	1,290	-14.0	269	248	-7.8	1,432	1,490	4.0
Ingham	6.1	6.3	3.3	9,337	9,906	6.1	4,611	4,567	-1.0	12,321	14,346	16.4
Ionia	7.6	7.0	-8.7	2,310	2,149	-6.9	638	696	9.1	2,255	2,494	10.6
Iosco	9.5	8.9	-6.3	1,038	989	-4.7	301	287	-4.7	1,652	1,790	8.3
Iron	7.6	7.4	-2.6	457	450	-1.5	118	123	4.2	561	598	6.5
Isabella	4.9	4.7	-4.1	1,780	1,773	-0.4	553	672	21.5	2,241	2,540	13.4
Jackson	7.5	6.6	-12.4	5,981	5,319	-11.1	2,131	2,320	8.9	6,526	7,266	11.3
Kalamazoo	6.0	5.3	-10.6	7,850	7,220	-8.0	3,466	3,527	1.8	10,388	12,003	15.5
Kalkaska	7.8	7.2	-7.3	697	668	-4.2	199	227	14.1	821	898	9.4
Kent	6.8	6.0	-12.7	21,847	19,309	-11.6	8,237	8,303	0.8	23,562	26,340	11.8
Keweenaw	11.6	10.5	-9.5	121	113	-6.6	43	10	-76.7	136	74	-45.5
Lake	10.0	9.6	-4.0	453	431	-5.0	229	229	0.0	1,012	1,055	4.3
Lapeer	6.7	7.5	12.4	2,993	3,376	12.8	597	615	3.0	2,020	2,242	11.0
Leelanau**	5.0	4.3	-13.3	587	522	-11.1	**	147	*	**	288	*

<sup>1</sup>Please note: The U.S. Department of Labor (DOL) has changed the method by which it estimates employment and unemployment on the statewide, metropolitan and county levels. The monthly statewide unemployment figures on which the above quarterly statewide numbers are based were posted by the department during March 2005 based on the new model, and differ from those posted by the department previously. County level unemployment figures based on the new model are not final, however, and therefore the county level figures above are based on the Department of Labor's previous data. Final county estimates based on the new model will be made available by the DOL later this year, and at that time this publication will use the new numbers.

<sup>2</sup>In some cases the Michigan number is slightly different from the county total.

\*Cannot be calculated.

\*\*Public Assistance data for Charlevoix is combined with and reported as Emmet, Public Assistance data for Leelanau is combined with and reported as Grand Traverse, and Public Assistance data for Missaukee is combined with and reported as Wexford.

Data sources: Unemployment: Bureau of Labor Statistics, Local Area Unemployment Statistics; Public Assistance: Michigan Department of Human Services.

## Family Independence Program (Cash Assistance)

Total Number of Applications			Average Number of Families Receiving Cash Assistance Per Month			Application Approvals: Unemployment Benefits Exhausted, Layoff or Discharge, Depleted Savings, Non-Exempt Property or Loss of Other Resources			Total Number of Denials		Income Exceeds Standards as Percent of Denials		Percent of Cases Without Earned Income, Out of Total Cases Expected to Work	
Qtr 2 2004	Qtr 2 2005	% change	Qtr 2 2004	Qtr 2 2005	% change	Qtr 2 2004	Qtr 2 2005	% change	Qtr 2 2004	Qtr 2 2005	Qtr 2 2004	Qtr 2 2005	Qtr 2 2004	Qtr 2 2005
<b>46,423</b>	<b>46,063</b>	<b>-0.8</b>	<b>78,214</b>	<b>78,050</b>	<b>-0.2</b>	<b>2,557</b>	<b>2,053</b>	<b>-19.7</b>	<b>20,280</b>	<b>20,430</b>	<b>43.9</b>	<b>43.8</b>	<b>66%</b>	<b>66%</b>
34	34	0.0	39	46	19.8	0	1	*	12	19	66.7	42.1	0%	46%
24	24	0.0	27	26	-6.1	1	0	-100.0	13	9	76.9	77.8	50%	19%
406	417	2.7	394	379	-3.8	50	28	-44.0	191	207	50.3	55.6	55%	57%
139	141	1.4	171	185	7.8	33	13	-60.6	59	64	52.5	56.3	43%	41%
88	82	-6.8	65	67	3.1	3	1	-66.7	45	43	48.9	69.8	44%	28%
57	67	17.5	116	93	-19.8	9	7	-22.2	36	33	36.1	54.5	50%	54%
44	40	-9.1	61	59	-3.8	0	0	*	15	8	53.3	25.0	76%	53%
205	203	-1.0	233	232	-0.3	46	20	-56.5	86	93	53.5	64.5	49%	52%
516	496	-3.9	769	793	3.1	38	42	10.5	192	200	45.8	46.0	49%	50%
54	61	13.0	56	52	-7.7	8	10	25.0	40	44	57.5	56.8	37%	38%
1,132	969	-14.4	1,359	1,270	-6.6	27	34	25.9	552	454	39.7	41.2	53%	60%
285	279	-2.1	272	229	-15.8	23	36	56.5	122	149	45.1	46.3	60%	51%
999	1,057	5.8	1,373	1,457	6.1	103	72	-30.1	458	409	48.0	55.3	70%	67%
239	248	3.8	287	316	9.9	6	9	50.0	88	104	43.2	41.3	67%	65%
**	59	*	**	49	*	0	4	*	*	27	*	44.4	**	**
118	122	3.4	125	111	-11.5	11	11	0.0	66	71	50.0	49.3	72%	57%
175	136	-22.3	186	172	-7.5	24	19	-20.8	71	59	52.1	42.4	57%	60%
167	202	21.0	284	296	4.3	11	17	54.5	71	99	40.8	53.5	44%	39%
163	131	-19.6	138	118	-14.9	11	4	-63.6	88	93	64.8	55.9	46%	90%
68	62	-8.8	82	92	12.2	3	7	133.3	30	16	66.7	56.3	62%	50%
148	137	-7.4	155	154	-0.2	9	9	0.0	66	62	56.1	64.5	49%	58%
87	101	16.1	81	67	-16.9	14	11	-21.4	45	38	55.6	50.0	15%	32%
401	374	-6.7	354	361	2.0	23	5	-78.3	199	175	37.7	54.3	48%	56%
131	80	-38.9	113	74	-34.6	5	4	-20.0	80	32	51.3	43.8	79%	43%
3,385	3,728	10.1	6,646	6,657	0.2	186	145	-22.0	1,437	1,619	37.6	40.3	60%	60%
104	134	28.8	128	156	22.2	5	5	0.0	50	59	54.0	52.5	42%	33%
57	67	17.5	135	153	13.3	5	3	-40.0	16	22	75.0	77.3	45%	60%
292	291	-0.3	197	151	-23.4	19	13	-31.6	151	153	63.6	62.1	63%	71%
203	252	24.1	210	241	14.4	18	15	-16.7	114	142	46.5	52.8	51%	47%
206	200	-2.9	174	172	-1.3	18	17	-5.6	96	106	40.6	33.0	46%	80%
50	71	42.0	98	95	-3.1	8	8	0.0	13	14	69.2	71.4	49%	63%
72	67	-6.9	117	103	-11.4	9	10	11.1	24	13	66.7	53.8	61%	73%
1,437	1,491	3.8	1,632	1,728	5.9	70	54	-22.9	662	717	40.5	46.9	59%	59%
300	303	1.0	258	238	-7.7	8	13	62.5	107	146	47.7	44.5	59%	53%
122	87	-28.7	163	129	-20.7	4	5	25.0	49	40	44.9	62.5	45%	30%
46	51	10.9	73	66	-10.0	6	4	-33.3	15	20	66.7	60.0	58%	63%
245	235	-4.1	275	316	14.9	5	3	-40.0	114	108	44.7	53.7	66%	61%
816	878	7.6	1,153	1,089	-5.6	31	32	3.2	386	439	41.5	37.1	70%	67%
1,308	1,356	3.7	1,746	1,654	-5.3	50	43	-14.0	507	527	37.7	38.7	70%	67%
75	74	-1.3	84	63	-24.3	18	13	-27.8	28	34	39.3	55.9	37%	48%
3,018	2,911	-3.5	4,489	4,341	-3.3	170	170	0.0	1,269	1,351	47.0	46.3	39%	52%
7	1	-85.7	7	3	-55.0	0	0	*	2	1	*	*	17%	0%
100	72	-28.0	152	143	-6.3	8	7	-12.5	26	29	19.2	37.9	66%	73%
247	249	0.8	251	256	2.0	11	11	0.0	126	132	46.0	54.5	54%	67%
**	25	*	**	20	*	0	2	*	*	12	*	58.3	**	**


<sup>1</sup>Please note: The U.S. Department of Labor (DOL) has changed the method by which it estimates employment and unemployment on the statewide, metropolitan and county levels. The monthly statewide unemployment figures on which the above quarterly statewide numbers are based were posted by the department during March 2005 based on the new model, and differ from those posted by the department previously. County level unemployment figures based on the new model are not final, however, and therefore the county level figures above are based on the Department of Labor's previous data. Final county estimates based on the new model will be made available by the DOL later this year, and at that time this publication will use the new numbers.

<sup>2</sup>In some cases the Michigan number is slightly different from the county total.

\*Cannot be calculated.

\*\*Public Assistance data for Charlevoix is combined with and reported as Emmet, Public Assistance data for Leelanau is combined with and reported as Grand Traverse, and Public Assistance data for Missaukee is combined with and reported as Wexford.

Data sources: Unemployment: Bureau of Labor Statistics, Local Area Unemployment Statistics; Public Assistance: Michigan Department of Human Services.

 Prepared by: Michigan League for Human Services	Unemployment (data not seasonally adjusted)						Food Assistance Program					
	Unemployment Rate			Number Unemployed			Total Number of Applications			Average Number of Households Receiving Food Assistance Per Month		
	Qtr 2 2004	Qtr 2 2005	% change	Qtr 2 2004	Qtr 2 2005	% change	Qtr 2 2004	Qtr 2 2005	% change	Qtr 2 2004	Qtr 2 2005	% change
Lenawee	7.2	6.6	-7.4	3,589	3,374	-6.0	1,018	1,108	8.8	2,930	3,228	10.2
Livingston	4.5	5.4	19.3	4,095	4,903	19.7	637	776	21.8	1,719	2,092	21.7
Luce	7.7	7.7	-0.4	221	227	2.4	105	55	-47.6	413	365	-11.5
Mackinac	8.1	8.5	4.5	504	549	8.9	69	87	26.1	261	374	43.2
Macomb	6.2	6.9	11.4	25,933	28,940	11.6	6,417	6,869	7.0	20,222	23,389	15.7
Manistee	8.6	7.6	-12.4	1,038	922	-11.1	277	345	24.5	1,121	1,350	20.4
Marquette	6.3	5.8	-7.4	2,165	2,084	-3.8	617	610	-1.1	2,296	2,568	11.8
Mason	8.9	7.2	-19.1	1,369	1,127	-17.7	305	341	11.8	1,407	1,545	9.8
Mecosta	6.8	7.2	4.9	1,347	1,403	4.2	524	550	5.0	2,169	2,583	19.1
Menominee	5.6	5.3	-4.8	754	736	-2.4	213	254	19.2	975	1,067	9.4
Midland	6.4	6.0	-5.7	2,672	2,541	-4.9	725	788	8.7	2,807	3,217	14.6
Missaukee**	7.5	6.8	-8.5	510	480	-5.9	**	**	*	**	655	*
Monroe	6.3	6.0	-4.3	4,852	4,764	-1.8	1,271	1,359	6.9	3,860	4,363	13.0
Montcalm	7.8	8.0	3.0	2,311	2,424	4.9	651	632	-2.9	2,499	2,835	13.4
Montmorency	11.6	11.0	-4.9	507	506	-0.3	114	87	-23.7	570	606	6.3
Muskegon	7.8	7.0	-10.3	7,016	6,354	-9.4	3,247	3,017	-7.1	11,429	13,039	14.1
Newaygo	7.6	7.2	-5.3	1,727	1,681	-2.7	578	544	-5.9	2,277	2,457	7.9
Oakland	5.2	5.8	11.5	33,450	37,172	11.1	9,250	9,541	3.1	23,355	25,975	11.2
Oceana	8.0	7.8	-1.7	1,105	1,091	-1.2	811	786	-3.1	1,609	1,738	8.0
Ogemaw	8.3	7.2	-13.3	834	737	-11.6	295	308	4.4	1,503	1,709	13.8
Ononagon	8.5	7.9	-7.8	305	284	-6.9	56	64	14.3	326	362	11.1
Osceola	8.3	7.4	-10.1	877	793	-9.6	289	271	-6.2	1,315	1,431	8.8
Oscoda	10.6	10.3	-2.2	410	407	-0.6	97	104	7.2	565	625	10.6
Otsego	7.7	7.0	-9.9	980	917	-6.5	315	258	-18.1	1,040	1,118	7.5
Ottawa	5.5	5.2	-6.1	7,359	7,068	-4.0	1,559	1,631	4.6	4,521	5,121	13.3
Presque Isle	10.4	9.4	-9.6	679	621	-8.5	120	119	-0.8	511	553	8.2
Roscommon	7.9	7.5	-4.6	900	906	0.7	305	303	-0.7	1,647	1,845	12.0
Saginaw	8.8	7.9	-9.5	8,831	8,074	-8.6	3,516	3,754	6.8	12,760	14,351	12.5
Saint Clair	7.0	8.0	14.4	5,887	6,739	14.5	2,049	2,020	-1.4	6,569	7,239	10.2
Saint Joseph	6.7	6.5	-4.0	2,080	2,047	-1.6	779	877	12.6	2,784	2,927	5.1
Sanilac	9.0	8.3	-7.4	2,007	1,846	-8.0	432	429	-0.7	2,101	2,264	7.8
Schoolcraft	10.8	10.4	-4.0	438	432	-1.4	82	84	2.4	468	502	7.3
Shiawassee	7.2	7.4	2.3	2,704	2,830	4.7	788	807	2.4	2,755	3,140	13.9
Tuscola	8.9	7.9	-10.9	2,673	2,420	-9.5	544	526	-3.3	1,986	2,252	13.4
Van Buren	6.9	6.6	-3.9	2,712	2,690	-0.8	1,555	1,498	-3.7	4,142	4,471	7.9
Washtenaw	4.4	4.4	0.0	8,232	8,494	3.2	2,667	2,971	11.4	7,220	8,424	16.7
Wayne	8.1	8.7	7.9	73,567	79,303	7.8	42,977	42,182	-1.8	133,829	150,510	12.5
Wexford**	8.3	7.4	-10.8	1,248	1,140	-8.7	587	447	-23.9	2,437	2,035	-16.5

## FACT

According to the Census Bureau's American Community Survey, in 2004, 17.6 of Michigan's children were in poverty.

\*Cannot be calculated.

\*\*Public Assistance data for Charlevoix is combined with and reported as Emmet, Public Assistance data for Leelanau is combined with and reported as Grand Traverse, and Public Assistance data for Missaukee is combined with and reported as Wexford.

Data sources: Unemployment: Bureau of Labor Statistics, Local Area Unemployment Statistics; Public Assistance: Michigan Department of Human Services.

Family Independence Program (Cash Assistance)

Total Number of Applications			Average Number of Families Receiving Cash Assistance Per Month			Application Approvals: Unemployment Benefits Exhausted, Layoff or Discharge, Depleted Savings, Non-Exempt Property or Loss of Other Resources			Total Number of Denials		Income Exceeds Standards as Percent of Denials		Percent of Cases Without Earned Income, Out of Total Cases Expected to Work	
Qtr 2 2004	Qtr 2 2005	% change	Qtr 2 2004	Qtr 2 2005	% change	Qtr 2 2004	Qtr 2 2005	% change	Qtr 2 2004	Qtr 2 2005	Qtr 2 2004	Qtr 2 2005	Qtr 2 2004	Qtr 2 2005
386	375	-2.8	367	359	-2.3	11	7	-36.4	175	187	52.6	55.1	38%	42%
250	278	11.2	139	143	2.4	16	12	-25.0	146	191	58.9	51.3	45%	55%
39	22	-43.6	41	31	-23.0	0	0	*	19	13	68.4	30.8	59%	54%
34	32	-5.9	28	37	32.5	5	2	-60.0	14	17	50.0	58.8	6%	0%
2,146	2,117	-1.4	2,397	2,509	4.7	117	91	-22.2	1,051	1,102	50.5	45.6	64%	66%
91	107	17.6	121	121	-0.3	16	13	-18.8	43	49	48.8	46.9	60%	51%
191	171	-10.5	232	240	3.4	27	5	-81.5	50	50	58.0	48.0	54%	65%
108	139	28.7	206	226	10.0	7	10	42.9	40	55	40.0	54.5	36%	60%
195	148	-24.1	205	209	2.3	10	4	-60.0	78	45	48.7	46.7	64%	77%
73	95	30.1	85	77	-9.4	9	4	-55.6	22	33	31.8	30.3	72%	50%
301	282	-6.3	333	332	-0.4	24	22	-8.3	135	136	51.9	47.8	51%	48%
**	65	*	**	66	*	0	7	*	*	29	*	34.5	**	**
491	474	-3.5	569	603	6.0	21	12	-42.9	236	229	37.7	47.2	65%	67%
280	258	-7.9	280	284	1.5	29	24	-17.2	154	136	44.8	48.5	74%	68%
44	33	-25.0	54	43	-21.5	3	5	66.7	17	16	70.6	68.8	30%	52%
1,169	1,238	5.9	2,696	2,694	-0.1	86	59	-31.4	450	451	50.7	47.2	71%	71%
225	193	-14.2	265	267	0.8	11	9	-18.2	72	75	30.6	24.0	64%	67%
2,675	2,666	-0.3	3,339	3,329	-0.3	111	78	-29.7	1,490	1,431	46.6	48.0	61%	66%
148	147	-0.7	324	333	2.6	20	32	60.0	42	41	61.9	56.1	66%	62%
103	107	3.9	148	164	10.8	11	26	136.4	36	35	55.6	57.1	53%	58%
23	21	-8.7	39	40	2.6	3	4	33.3	9	6	22.2	83.3	30%	27%
118	114	-3.4	163	181	11.1	8	7	-12.5	50	51	52.0	56.9	67%	**
30	28	-6.7	49	58	17.7	3	4	33.3	12	9	58.3	33.3	92%	34%
113	105	-7.1	81	84	2.9	3	8	166.7	62	47	59.7	66.0	52%	49%
496	477	-3.8	458	482	5.2	24	15	-37.5	230	201	45.7	46.8	66%	66%
42	39	-7.1	39	44	12.7	2	3	50.0	18	23	61.1	60.9	17%	0%
97	111	14.4	164	161	-1.6	1	6	500.0	34	37	50.0	37.8	50%	54%
1,550	1,513	-2.4	3,079	2,954	-4.1	123	99	-19.5	686	735	42.3	36.6	52%	50%
796	745	-6.4	1,053	1,004	-4.7	85	49	-42.4	305	323	43.3	43.0	65%	58%
311	367	18.0	343	319	-7.2	27	10	-63.0	144	171	45.1	47.4	54%	61%
174	161	-7.5	275	224	-18.8	36	33	-8.3	63	77	52.4	42.9	57%	53%
38	28	-26.3	62	61	-1.6	3	1	-66.7	13	3	23.1	33.3	70%	53%
321	340	5.9	302	302	-0.1	19	4	-78.9	153	141	52.3	39.7	39%	47%
214	206	-3.7	239	253	6.1	15	12	-20.0	96	91	44.8	46.2	55%	57%
531	459	-13.6	625	598	-4.4	46	35	-23.9	226	191	52.2	47.6	54%	61%
911	891	-2.2	1,180	1,225	3.8	18	13	-27.8	409	391	42.5	41.4	64%	66%
13,677	13,280	-2.9	33,162	33,288	0.4	479	382	-20.3	5,586	5,353	39.3	37.7	71%	70%
262	166	-36.6	341	235	-31.1	21	9	-57.1	97	67	51.5	46.3	70%	67%

FACT

According to the Census Bureau's American Community Survey, in 2004, 38.2 percent of renting households paid more than 35 percent of their monthly income in rent.

\*Cannot be calculated.

\*\*Public Assistance data for Charlevoix is combined with and reported as Emmet, Public Assistance data for Leelanau is combined with and reported as Grand Traverse, and Public Assistance data for Missaukee is combined with and reported as Wexford.

Data sources: Unemployment: Bureau of Labor Statistics, Local Area Unemployment Statistics; Public Assistance: Michigan Department of Human Services.

Employment Trends by Selected Industries in Michigan  
(data not seasonally adjusted, rounded to the nearest hundred)

Industry	Avg 2004 Qtr 2	Avg 2005 Qtr 2	% Change	Industry	Avg 2004 Qtr 2	Avg 2005 Qtr 2	% Change
<b>TOTAL NONFARM</b>	<b>4,429,000</b>	<b>4,400,700</b>	<b>-0.6</b>	<b>Trade Transportation &amp; Utilities</b>	<b>810,800</b>	<b>810,100</b>	<b>-0.1</b>
<b>TOTAL PRIVATE</b>	<b>3,740,500</b>	<b>3,706,900</b>	<b>-0.9</b>	• <b>Wholesale Trade</b>	<b>171,700</b>	<b>173,100</b>	<b>0.8</b>
<b>GOODS PRODUCING</b>	<b>905,100</b>	<b>879,800</b>	<b>-2.8</b>	Merchant Wholesalers			
<b>SERVICE-PROVIDING</b>	<b>3,523,900</b>	<b>3,520,900</b>	<b>-0.1</b>	Durable Goods	96,900	97,700	0.8
<b>Natural Resources and Mining</b>	<b>8,300</b>	<b>8,700</b>	<b>4.8</b>	Merchant Wholesalers			
Mining	6,800	7,000	2.9	Nondurable Goods	50,000	50,800	1.6
Mining except oil and gas	4,600	4,900	6.5	Wholesale Electronic Markets			
<b>Construction</b>	<b>194,300</b>	<b>191,900</b>	<b>-1.2</b>	and Agents and Brokers	24,800	24,600	-0.8
Construction of Buildings	46,200	46,200	0.0	• <b>Retail Trade</b>	<b>513,600</b>	<b>509,900</b>	<b>-0.7</b>
Heavy and Civil Engineering	18,100	17,200	-5.0	Motor Vehicle and Parts Dealers	63,600	64,100	0.8
Specialty Trade Contractors	130,000	128,500	-1.2	Furniture and Home Furnishings	18,700	19,100	2.1
<b>Manufacturing</b>	<b>702,500</b>	<b>679,200</b>	<b>-3.3</b>	Electronics and Appliance	16,900	17,500	3.6
• <b>Durable Goods</b>	<b>555,000</b>	<b>531,900</b>	<b>-4.2</b>	Building Material and Garden			
Wood Product Manufacturing	11,500	11,500	0.0	Equip. and Supplies Dealers	49,000	49,700	1.4
Nonmetallic Mineral Products	16,900	16,900	0.0	Food and Beverage Stores	89,000	88,000	-1.1
Primary Metal Manufacturing	27,600	27,100	-1.8	Health and Personal Care	32,300	32,300	0.0
Fabricated Metal Product	83,100	83,000	-0.1	Gasoline Stations	26,300	26,000	-1.1
Machinery Manufacturing	75,700	76,400	0.9	Clothing and Clothing Accessories	39,100	40,100	2.6
Computer and Electronic Products	19,300	19,000	-1.6	Sporting Goods, Hobby, Book,			
Electrical Equipment and				and Music Stores	23,900	25,000	4.6
Appliances	14,500	13,600	-6.2	General Merchandise Stores	114,000	107,800	-5.4
Motor Vehicle Manufacturing	72,600	63,400	-12.7	Miscellaneous Store Retail	30,000	31,200	4.0
Motor Vehicle Parts				• <b>Transportation &amp; Warehousing</b>	<b>104,900</b>	<b>106,500</b>	<b>1.5</b>
Manufacturing	174,000	164,500	-5.5	Rail Transportation	5,100	5,200	2.0
Furniture and Related Products	26,100	24,500	-6.1	Truck Transportation	36,000	37,200	3.3
Miscellaneous Manufacturing	17,600	17,500	-0.6	Warehousing and Storage	15,200	16,000	5.3
• <b>Non-Durable Goods</b>	<b>147,500</b>	<b>147,300</b>	<b>-0.1</b>	<b>Information</b>	<b>68,700</b>	<b>65,300</b>	<b>-4.9</b>
Food Manufacturing	32,000	31,300	-2.2	Publishing Industries	25,400	24,000	-5.5
Paper Manufacturing	14,800	14,600	-1.4	Telecommunications	22,400	21,200	-5.4
Printing and Related Support				<b>Financial Activities</b>	<b>218,800</b>	<b>219,200</b>	<b>0.2</b>
Activities	18,400	18,400	0.0	Finance and Insurance	161,800	162,800	0.6
Chemical Manufacturing	27,700	27,700	0.0	Real Estate	38,900	38,900	0.0
Plastics and Rubber Products	43,200	42,600	-1.4	Rental and Leasing Services	17,200	16,100	-6.4

Note: Industry details and subtotals may not sum to totals due to rounding.

Source: Department of Labor and Economic Growth/Office of Labor Market Information, Current Employment Statistics Section - (800) 225-3732

Employment Trends by Selected Industries in Michigan  
(data not seasonally adjusted, rounded to the nearest hundred)

Industry	Avg 2004 Qtr2	Avg 2005 Qtr2	% Change	Industry	Avg 2004 Qtr 2	Avg 2005 Qtr 2	% Change
<b>Professional &amp; Business Services</b>	<b>589,000</b>	<b>577,900</b>	<b>-1.9</b>	<b>Other Services</b>	<b>178,900</b>	<b>180,900</b>	<b>1.1</b>
Legal Services	29,500	29,500	0.0	Repair and Maintenance	43,100	42,400	-1.6
Accounting and Tax Preparation	27,600	27,900	1.1	Personal and Laundry Services	41,600	41,000	-1.4
Architectural Engineering	71,900	69,100	-3.9	Religious Grantmaking Civic Professional	94,200	97,500	3.5
Computer Systems Design	38,900	39,200	0.8	<b>Government</b>	<b>688,500</b>	<b>693,900</b>	<b>0.8</b>
Management, Scientific and Technical Consulting Services	18,800	19,700	4.8	• <b>Federal Government</b>	<b>55,600</b>	<b>54,900</b>	<b>-1.3</b>
Scientific Research and Development Services	23,700	24,200	2.1	Federal Government Hospital Services	5,800	5,900	1.7
Advertising and Related	16,200	16,800	3.7	U.S. Postal Service	27,900	27,500	-1.4
Other Professional Scientific and Technical Services	15,000	14,600	-2.7	• <b>State Government</b>	<b>165,100</b>	<b>165,100</b>	<b>0.0</b>
Management of Companies	68,100	68,000	-0.1	State Government Educational Services	92,800	92,800	0.0
Administrative & Support Services	275,000	264,700	-3.7	State Government Hospital Services	14,100	14,800	5.0
<b>Educational and Health Services</b>	<b>556,800</b>	<b>557,400</b>	<b>0.1</b>	• <b>Local Government</b>	<b>467,800</b>	<b>473,900</b>	<b>1.3</b>
• <b>Educational Services</b> (see also <b>Government</b> )	<b>72,600</b>	<b>67,200</b>	<b>-7.4</b>	Local Government Educational Services	280,900	283,200	0.8
• <b>Health Care &amp; Social Assistance</b>	<b>484,100</b>	<b>490,200</b>	<b>1.3</b>	Local Government Hospitals	13,300	13,500	1.5
Ambulatory Health Care Services	161,600	162,300	0.4	Local Government Elementary and Secondary Schools	260,100	261,700	0.6
Offices of Physicians	64,300	64,900	0.9	Local Government Junior Colleges	20,100	21,100	5.0
Offices of Dentists	31,700	31,600	-0.3				
Offices of Other Health Professionals	19,000	18,600	-2.1				
Home Health Care Service	24,300	24,200	-0.4				
Hospitals	178,900	184,800	3.3				
Nursing and Residential Care	86,700	86,400	-0.3				
—Nursing Care Facilities	40,900	39,700	-2.9				
—Community Care Facilities	21,500	21,000	-2.3				
Social Assistance	56,900	56,700	-0.4				
Individual and Family Services	24,700	23,600	-4.5				
<b>Leisure and Hospitality</b>	<b>412,500</b>	<b>416,300</b>	<b>0.9</b>				
Performing Arts Spectator Activities	10,300	10,100	-1.9				
Amusement, Gambling & Recreation	53,400	54,700	2.4				
Accommodation	34,600	35,200	1.7				
Food Services and Drinking	310,200	312,700	0.8				

**VISIT OUR WEBSITE FOR MORE INFORMATION!**

The "Work and Wages" section of the Michigan League for Human Services website has information on Workforce Development, Work Supports, Unemployment, and Self-Sufficiency. It also includes back issues of the Economic Security Bulletin. Go to <http://www.MiLHS.org> and click the "Work and Wages" tab at the right.

Note: Industry details and subtotals may not sum to totals due to rounding.

Source: Department of Labor and Economic Growth/Office of Labor Market Information, Current Employment Statistics Section - (800) 225-3732



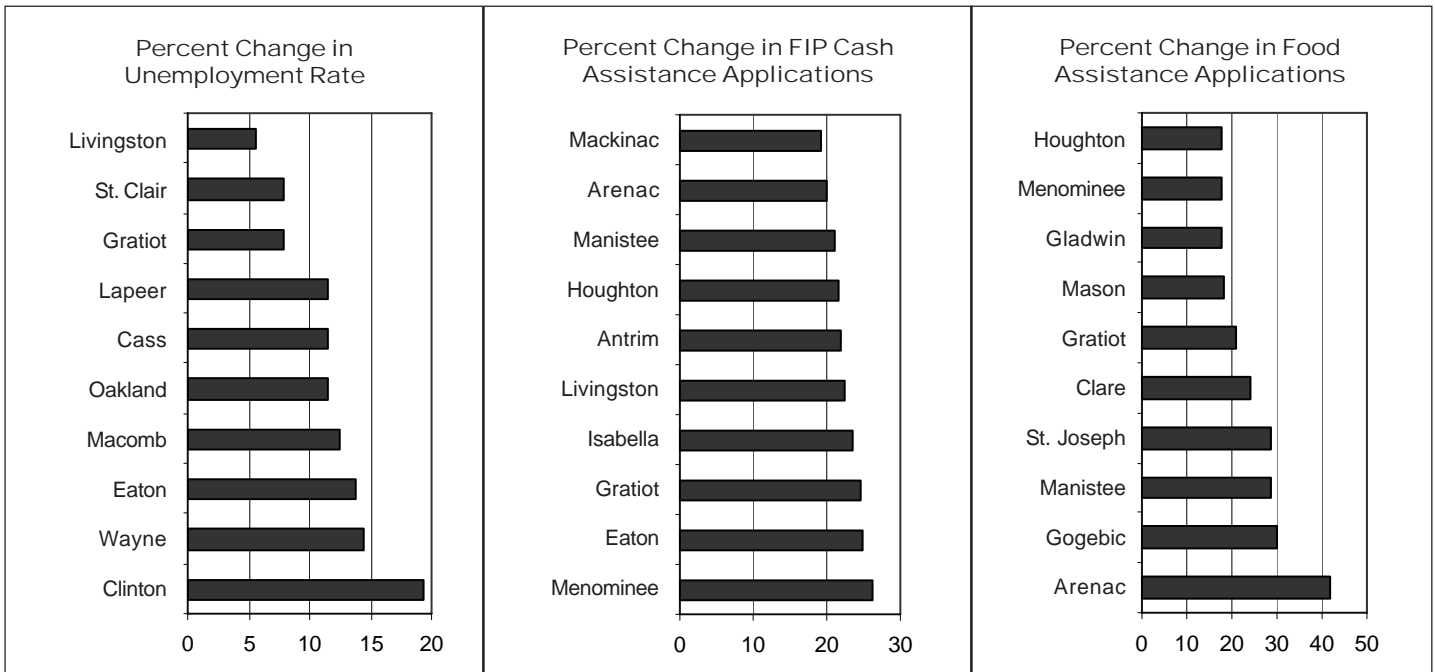
**Michigan League for Human Services**

1115 South Pennsylvania Avenue, Suite 202  
 Lansing, MI 48912-1658  
 (517) 487-5436 — Fax (517) 371-4546  
 Web site: www.milhs.org

*A United Way Agency*

Nonprofit  
 Organization  
 U.S. Postage  
**Paid**  
 Lansing, MI  
 Permit #1421

Percentage Change in Michigan Counties With Largest Increases  
 Second Quarter 2004 — Second Quarter 2005



Sources: Unemployment: Bureau of Labor Statistics, Local Area Unemployment Statistics; Public Assistance: Michigan Department of Human Services