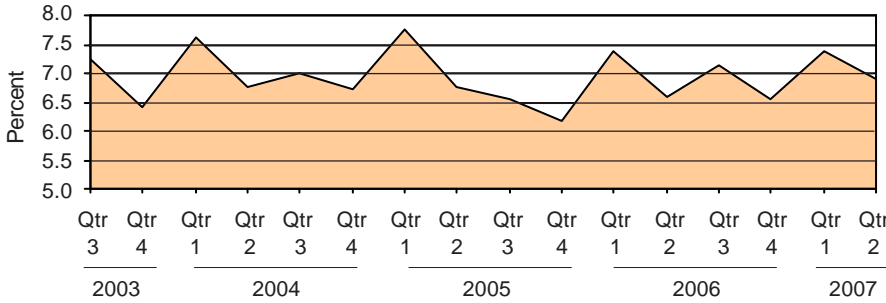


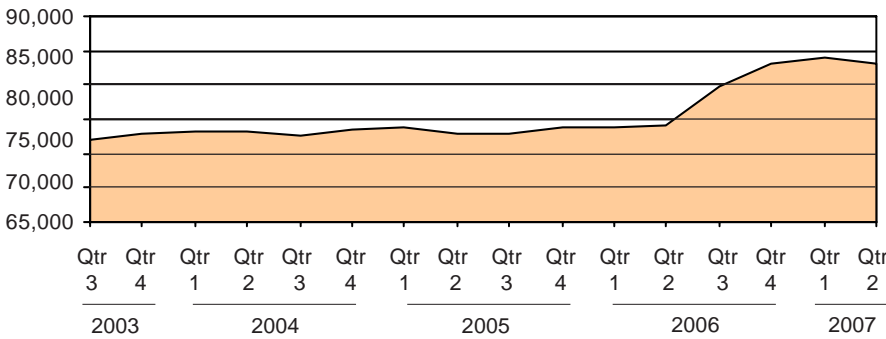


Michigan's Unemployment Rate
Over the Past Four Years
(not seasonally adjusted)



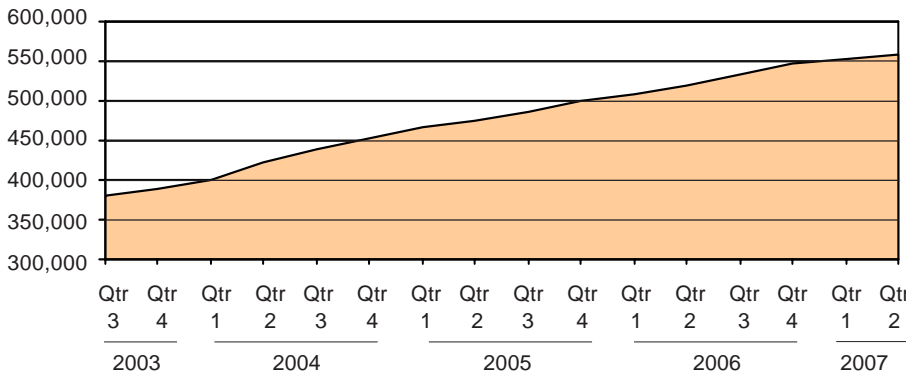
Source: Bureau of Labor Statistics

Family Independence Program Cases in Michigan
Over the Past Four Years



Source: Michigan Department of Human Services

Food Assistance Households Over the Past Four Years



Source: Michigan Department of Human Services


New in this Bulletin— Medical Assistance Indicators

Medicaid is a program that provides comprehensive health and long-term care for low-income families, the elderly, and the disabled. Children under 19 are eligible in Michigan if their families are at or below 150 percent of the federal poverty level. Adults who are elderly or disabled are eligible at or below 100 percent of the poverty line. Other adults, depending on their circumstances, may be eligible for Medicaid with incomes at 35-50 percent of the poverty level.

The Economic Security Bulletin is now publishing quarterly county averages for applications for Medicaid. It is also publishing the average number of persons in each county who are eligible for "Medicaid Only," meaning they are not also receiving Family Independence Program (FIP) cash assistance or Supplemental Security Income (SSI). Recipients of those programs are not counted in these averages because participation in FIP or SSI makes them automatically eligible. Medicaid-eligible persons enrolled in other assistance programs, such as Food Assistance, are included in these figures because participation in those programs does not provide automatic eligibility.

This document reports the number of persons eligible for Medicaid rather than cases because individuals receive health care benefits rather than family groups. In addition, children in low-income families may qualify for Medicaid while, due to lower income limits, their parents may not. Reporting the number of persons eligible also allows comparisons with county populations to demonstrate the impact and importance of this program. As such, the bulletin now publishes the percent of the

(cont. on page 4)

 Prepared by: Michigan League for Human Services	Unemployment (data not seasonally adjusted)						Food Assistance Program					
	Unemployment Rate			Number Unemployed			Total Number of Applications			Average Number of Households Receiving Food Assistance Per Month		
	County	Qtr 2 2006	Qtr 2 2007	+/- points	Qtr 2 2006	Qtr 2 2007	% change	Qtr 2 2006	Qtr 2 2007	% change	Qtr 2 2006	Qtr 2 2007
Michigan¹	6.6	6.9	0.3	333,924	349,085	4.5	148,945	151,313	1.6	518,840	559,233	7.8
Alcona	10.1	9.6	-0.4	452	428	-5.4	97	108	11.3	551	584	6.1
Alger	8.1	8.9	0.7	363	396	9.2	83	58	-30.1	304	353	16.2
Allegan	5.8	6.1	0.3	3,305	3,465	4.8	1,263	1,510	19.6	3,815	4,177	9.5
Alpena	7.1	8.2	1.1	1,077	1,218	13.1	488	488	0.0	2,109	2,302	9.1
Antrim	7.4	7.8	0.4	907	954	5.1	275	257	-6.5	875	1,008	15.2
Arenac	9.2	9.6	0.4	742	755	1.8	237	228	-3.8	1,144	1,187	3.7
Baraga	11.2	13.5	2.3	476	582	22.2	133	166	24.8	436	475	8.9
Barry	4.8	5.2	0.4	1,519	1,638	7.9	621	636	2.4	2,203	2,333	5.9
Bay	6.9	6.8	-0.1	3,881	3,719	-4.2	1,373	1,366	-0.5	6,501	6,990	7.5
Benzie	6.7	7.5	0.7	626	694	10.9	252	176	-30.2	628	734	16.9
Berrien	6.8	6.7	-0.1	5,402	5,267	-2.5	2,940	2,921	-0.6	9,776	10,223	4.6
Branch	6.9	7.2	0.4	1,576	1,616	2.6	651	644	-1.1	2,062	2,361	14.5
Calhoun	6.6	6.8	0.2	4,808	4,888	1.7	2,679	2,828	5.6	9,849	10,582	7.4
Cass	4.8	4.5	-0.3	1,338	1,235	-7.7	613	673	9.8	2,521	2,690	6.7
Charlevoix	7.0	8.4	1.4	1,015	1,217	19.9	214	223	4.2	769	876	14.0
Cheboygan	8.2	8.6	0.5	1,090	1,145	5.1	320	363	13.4	1,453	1,682	15.8
Chippewa	8.4	8.8	0.4	1,474	1,562	6.0	431	525	21.8	1,659	1,835	10.6
Clare	9.4	10.4	1.0	1,288	1,430	11.0	537	501	-6.7	2,603	2,857	9.8
Clinton	5.0	5.3	0.3	1,901	1,995	4.9	494	511	3.4	1,669	1,832	9.8
Crawford	7.2	7.8	0.6	504	543	7.7	219	230	5.0	844	890	5.4
Delta	7.0	7.6	0.6	1,463	1,588	8.6	493	475	-3.7	2,068	2,189	5.9
Dickinson	5.8	6.2	0.4	854	924	8.2	334	339	1.5	1,053	1,141	8.4
Eaton	5.2	5.2	0.0	3,080	3,018	-2.0	1,174	1,204	2.6	3,555	3,905	9.8
Emmet	8.3	8.6	0.4	1,671	1,755	5.0	352	365	3.7	1,304	1,477	13.2
Genesee	7.9	8.1	0.2	16,853	16,791	-0.4	9,915	10,143	2.3	34,031	36,452	7.1
Gladwin	9.4	10.2	0.9	1,039	1,119	7.7	360	383	6.4	1,667	1,807	8.4
Gogebic	8.5	8.8	0.3	660	672	1.8	211	212	0.5	1,022	1,156	13.2
Gr. Traverse	5.7	6.5	0.8	2,826	3,252	15.1	1,183	1,202	1.6	3,355	3,827	14.1
Gratiot	8.1	8.3	0.1	1,676	1,684	0.5	514	526	2.3	1,987	2,209	11.2
Hillsdale	7.1	8.4	1.2	1,598	1,860	16.4	482	532	10.4	2,041	2,261	10.8
Houghton	7.1	7.8	0.6	1,262	1,379	9.2	338	381	12.7	1,701	1,813	6.6
Huron	7.6	7.6	0.0	1,328	1,329	0.0	308	256	-16.9	1,631	1,727	5.9
Ingham	6.3	6.1	-0.2	9,653	9,309	-3.6	4,656	4,670	0.3	15,975	17,071	6.9
Ionia	8.3	7.2	-1.1	2,625	2,231	-15.0	805	883	9.7	2,781	3,029	8.9
Iosco	8.2	9.2	1.0	935	1,055	12.8	344	351	2.0	1,872	2,016	7.7
Iron	7.2	7.5	0.3	437	456	4.3	117	154	31.6	579	630	8.8
Isabella	5.0	5.2	0.2	1,930	2,008	4.0	856	1,052	22.9	3,000	3,845	28.2
Jackson	6.8	7.6	0.8	5,333	5,902	10.7	2,663	2,718	2.1	7,907	8,914	12.7
Kalamazoo	5.1	5.3	0.2	6,851	7,073	3.2	3,748	4,071	8.6	13,421	14,727	9.7
Kalkaska	7.4	7.8	0.4	669	700	4.6	293	287	-2.0	1,006	1,149	14.2
Kent	5.5	5.8	0.3	17,723	18,733	5.7	8,945	9,969	11.4	28,739	31,273	8.8
Keweenaw	9.2	9.5	0.3	96	99	3.5	11	15	36.4	83	88	5.2
Lake	9.7	11.0	1.3	414	464	12.1	191	212	11.0	1,116	1,141	2.2
Lapeer	7.2	8.1	0.8	3,230	3,629	12.4	853	696	-18.4	2,464	2,900	17.7
Leelanau	4.5	5.0	0.5	529	588	11.1	118	128	8.5	370	375	1.4
Lenawee	6.8	7.4	0.6	3,435	3,710	8.0	1,275	1,169	-8.3	3,601	4,092	13.6
Livingston	5.0	5.6	0.6	4,676	5,301	13.4	900	1,068	18.7	2,428	2,889	19.0
Luce	7.5	8.2	0.7	217	237	9.2	85	94	10.6	382	446	16.8
Mackinac	7.9	8.1	0.2	502	515	2.7	104	88	-15.4	369	374	1.4
Macomb	6.7	7.1	0.4	28,058	29,966	6.8	8,175	8,290	1.4	26,105	30,092	15.3

¹In some cases the Michigan number is slightly different from the county total.

Data sources: Unemployment: Bureau of Labor Statistics, Local Area Unemployment Statistics; Public Assistance: Michigan Department of Human Services.


Family Independence Program (Cash Assistance)									Medicaid							
Total Number of Applications			Average Number of Families Receiving Cash Assistance Per Month			Percent of Cases Without Earned Income, Out of Total Cases Expected to Work			Total Number of Applications			Average Number of Persons Eligible for Medicaid ONLY (Excludes FIP & SSI Recipients)			Percent of Population Eligible for Medicaid (Includes FIP & SSI Recipients) ²	
Qtr 2 2006	Qtr 2 2007	% change	Qtr 2 2006	Qtr 2 2007	% change	Qtr 2 2006	Qtr 2 2007	% change	Qtr 2 2006	Qtr 2 2007	% change	Qtr 2 2006	Qtr 2 2007	% change	Qtr 2 2006	Qtr 2 2007
47,847	45,356	-5.2	79,204	88,167	11.3	67%	64%	-3.6	165,344	159,469	-3.6	1,039,129	1,091,827	5.1	14.6%	15.4%
40	40	0.0	46	42	-8.0	60%	69%	-7.2	235	218	-7.2	1,461	1,360	-6.9	15.4%	14.5%
24	27	12.5	22	38	75.4	50%	46%	-7.2	139	129	-7.2	1,027	1,103	7.4	12.9%	14.1%
386	401	3.9	398	462	16.0	47%	48%	5.7	1,853	1,959	5.7	11,682	12,568	7.6	12.5%	13.4%
141	155	9.9	176	197	12.3	48%	49%	-2.9	615	597	-2.9	4,440	4,619	4.0	19.0%	20.1%
68	95	39.7	67	79	16.8	77%	0%	19.5	430	514	19.5	2,992	3,217	7.5	14.6%	15.6%
81	42	-48.1	97	98	0.7	59%	33%	2.9	314	323	2.9	2,539	2,584	1.8	19.2%	19.5%
41	42	2.4	51	56	9.1	65%	74%	4.3	139	145	4.3	1,105	1,110	0.5	16.3%	16.4%
209	191	-8.6	231	254	10.0	49%	38%	-13.8	889	766	-13.8	5,648	6,012	6.4	11.5%	12.2%
459	506	10.2	812	836	2.9	52%	50%	-1.0	1,722	1,704	-1.0	12,302	12,936	5.2	15.4%	16.2%
62	43	-30.6	40	71	77.5	46%	37%	-2.4	340	332	-2.4	2,022	2,204	9.0	13.6%	15.0%
912	877	-3.8	1,351	1,490	10.3	58%	53%	-7.4	3,707	3,434	-7.4	20,525	21,225	3.4	17.7%	18.4%
266	296	11.3	252	352	39.6	66%	43%	-16.8	1,053	876	-16.8	6,014	6,123	1.8	16.1%	17.1%
1,051	1,054	0.3	1,565	1,864	19.1	69%	60%	-4.0	2,856	2,741	-4.0	18,084	18,168	0.5	18.8%	19.6%
239	201	-15.9	267	356	33.3	48%	49%	-9.5	915	828	-9.5	6,401	6,653	3.9	15.6%	16.8%
67	67	0.0	48	61	27.8	**	**	-1.1	366	362	-1.1	2,798	2,924	4.5	11.9%	12.6%
116	114	-1.7	118	154	30.6	67%	30%	-3.5	542	523	-3.5	4,041	4,303	6.5	17.9%	19.2%
144	151	4.9	141	213	50.8	57%	47%	-4.9	821	781	-4.9	4,519	4,541	0.5	14.6%	15.3%
203	186	-8.4	294	352	19.9	64%	61%	-0.7	839	833	-0.7	5,136	5,340	4.0	22.2%	23.6%
169	149	-11.8	126	150	19.0	68%	32%	-12.9	747	651	-12.9	4,562	4,709	3.2	7.8%	8.2%
74	78	5.4	84	93	10.7	57%	27%	-16.8	346	288	-16.8	2,046	2,124	3.8	17.1%	17.9%
139	129	-7.2	146	182	24.4	48%	30%	-2.9	660	641	-2.9	4,921	5,215	6.0	16.1%	17.1%
98	88	-10.2	74	70	-4.5	27%	36%	19.2	422	503	19.2	3,460	3,631	4.9	14.8%	15.6%
377	387	2.7	377	469	24.4	60%	51%	-5.2	1,318	1,249	-5.2	8,720	9,412	7.9	10.1%	11.1%
90	92	2.2	68	87	27.9	79%	25%	-0.8	522	518	-0.8	4,116	4,341	5.5	14.2%	15.0%
3,734	3,243	-13.1	6,719	7,174	6.8	63%	67%	-5.6	10,469	9,885	-5.6	54,508	57,185	4.9	19.4%	20.3%
151	124	-17.9	159	207	29.7	57%	48%	-1.4	565	557	-1.4	3,698	3,740	1.1	17.5%	18.2%
56	67	19.6	167	185	10.6	78%	75%	-4.5	290	277	-4.5	2,148	2,185	1.7	17.6%	18.6%
250	313	25.2	162	211	30.7	71%	33%	8.2	1,455	1,575	8.2	9,060	9,942	9.7	12.5%	13.7%
234	211	-9.8	292	305	4.6	63%	49%	-5.0	911	865	-5.0	5,335	5,802	8.7	16.6%	17.9%
190	177	-6.8	183	246	34.7	67%	38%	-0.4	670	667	-0.4	5,747	5,774	0.5	15.3%	15.8%
90	70	-22.2	103	105	1.6	67%	50%	9.1	407	444	9.1	4,625	4,761	2.9	15.6%	16.0%
77	82	6.5	119	144	20.7	69%	51%	-16.0	511	429	-16.0	4,640	4,617	-0.5	16.3%	16.7%
1,476	1,307	-11.4	1,899	2,058	8.4	66%	51%	4.5	4,566	4,772	4.5	28,457	30,582	7.5	14.2%	15.2%
301	322	7.0	234	291	24.2	60%	45%	0.2	996	998	0.2	7,111	7,255	2.0	13.5%	13.9%
115	112	-2.6	131	162	23.4	40%	41%	14.7	538	617	14.7	3,995	4,105	2.7	18.5%	19.0%
42	51	21.4	58	76	30.5	26%	44%	2.0	295	301	2.0	1,834	1,913	4.3	18.3%	19.3%
293	258	-11.9	302	341	13.1	59%	47%	-13.2	1,067	926	-13.2	6,266	7,140	13.9	12.4%	13.9%
872	749	-14.1	981	1,234	25.8	69%	59%	0.8	2,754	2,775	0.8	18,054	18,416	2.0	14.7%	15.4%
1,315	1,359	3.3	1,785	2,056	15.2	64%	52%	-3.1	3,907	3,787	-3.1	23,480	25,344	7.9	13.8%	14.9%
102	107	4.9	84	97	14.6	58%	34%	9.7	340	373	9.7	2,922	2,968	1.6	20.5%	20.9%
2,903	2,979	2.6	4,208	4,595	9.2	49%	59%	10.0	8,573	9,434	10.0	63,284	68,964	9.0	14.4%	15.5%
3	3	0.0	4	5	16.7	20%	57%	82.4	17	31	82.4	245	228	-6.8	13.6%	12.8%
65	76	16.9	135	121	-10.4	59%	35%	1.0	301	304	1.0	1,851	1,825	-1.4	23.0%	22.6%
282	278	-1.4	248	339	36.8	71%	48%	-7.8	1,130	1,042	-7.8	7,888	8,518	8.0	10.1%	11.0%
19	22	15.8	23	26	13.0	**	**	3.9	179	186	3.9	1,161	1,313	13.0	5.9%	6.7%
404	379	-6.2	379	514	35.5	45%	35%	-12.2	1,641	1,441	-12.2	10,130	10,544	4.1	12.4%	13.1%
323	324	0.3	153	242	58.5	45%	32%	14.1	1,167	1,332	14.1	8,022	8,980	11.9	5.0%	5.6%
31	28	-9.7	25	51	102.7	58%	64%	14.2	155	177	14.2	1,010	1,024	1.3	19.2%	20.7%
32	27	-15.6	28	35	27.7	25%	27%	-28.7	251	179	-28.7	1,322	1,283	-3.0	13.8%	14.0%
2,376	2,383	0.3	2,719	3,487	28.3	65%	58%	-1.2	9,028	8,922	-1.2	63,150	70,294	11.3	9.7%	10.8%

¹In some cases the Michigan number is slightly different from the county total.

²Population figures based on U.S. Census Bureau county estimates from July of the previous year

*Data is unavailable or cannot be calculated.

Data sources: Unemployment: Bureau of Labor Statistics, Local Area Unemployment Statistics; Public Assistance: Michigan Department of Human Services.

 Prepared by: Michigan League for Human Services	Unemployment (data not seasonally adjusted)						Food Assistance Program					
	Unemployment Rate			Number Unemployed			Total Number of Applications			Average Number of Households Receiving Food Assistance Per Month		
	Qtr 2 2006	Qtr 2 2007	+/- points	Qtr 2 2006	Qtr 2 2007	% change	Qtr 2 2006	Qtr 2 2007	% change	Qtr 2 2006	Qtr 2 2007	% change
Manistee	8.0	8.4	0.4	995	1,035	4.1	316	362	14.6	1,417	1,540	8.6
Marquette	6.0	6.5	0.4	2,175	2,308	6.1	703	643	-8.5	2,796	3,060	9.4
Mason	7.3	7.4	0.0	1,127	1,118	-0.8	421	360	-14.5	1,683	1,791	6.5
Mecosta	7.2	7.3	0.2	1,451	1,481	2.1	535	635	18.7	3,012	3,422	13.6
Menominee	6.7	6.0	-0.7	899	806	-10.3	244	247	1.2	1,127	1,172	4.0
Midland	5.5	5.6	0.0	2,367	2,386	0.8	860	934	8.6	3,488	3,785	8.5
Missaukee	6.8	7.6	0.8	467	521	11.6	170	142	-16.5	689	734	6.5
Monroe	5.9	6.0	0.2	4,676	4,713	0.8	1,410	1,438	2.0	4,903	5,430	10.7
Montcalm	13.2	11.8	-1.4	3,798	3,306	-13.0	749	784	4.7	3,228	3,643	12.9
Montmorency	10.9	12.4	1.5	486	554	13.9	114	136	19.3	680	741	8.9
Muskegon	6.6	7.1	0.5	6,056	6,442	6.4	3,573	3,836	7.4	14,084	15,342	8.9
Newaygo	6.6	7.6	1.1	1,554	1,812	16.6	671	658	-1.9	2,663	2,832	6.3
Oakland	5.5	6.0	0.4	34,623	37,572	8.5	10,627	10,598	-0.3	28,388	32,043	12.9
Oceana	8.1	8.0	-0.1	1,198	1,184	-1.2	767	753	-1.8	1,848	1,881	1.8
Ogemaw	7.7	8.3	0.6	774	828	7.0	266	305	14.7	1,869	1,978	5.9
Ontonagon	8.2	9.3	1.1	292	330	13.0	60	70	16.7	383	409	6.9
Osceola	6.7	7.7	1.0	688	777	13.0	257	241	-6.2	1,394	1,479	6.1
Oscoda	9.9	9.9	0.0	404	409	1.1	102	130	27.5	628	728	15.8
Otsego	8.1	9.0	0.9	1,026	1,150	12.1	296	379	28.0	1,277	1,493	16.9
Ottawa	5.1	5.4	0.4	7,060	7,439	5.4	1,872	2,032	8.5	5,497	5,923	7.8
Presque Isle	10.6	11.7	1.0	685	734	7.2	92	112	21.7	571	626	9.7
Roscommon	8.6	9.3	0.7	964	1,037	7.6	349	367	5.2	1,935	2,069	6.9
Saginaw	7.5	7.0	-0.5	7,398	6,854	-7.4	4,078	3,938	-3.4	15,425	15,892	3.0
Saint Clair	7.3	8.7	1.4	6,126	7,353	20.0	2,432	2,406	-1.1	8,118	9,177	13.0
Saint Joseph	5.9	5.7	-0.1	1,853	1,770	-4.5	930	962	3.4	3,242	3,319	2.4
Sanilac	8.1	8.5	0.4	1,852	1,932	4.3	490	497	1.4	2,454	2,708	10.4
Schoolcraft	10.2	10.9	0.7	423	453	7.2	106	85	-19.8	517	557	7.7
Shiawassee	7.6	7.9	0.2	2,844	2,892	1.7	916	917	0.1	3,415	3,742	9.6
Tuscola	8.2	8.2	0.0	2,418	2,370	-2.0	572	642	12.2	2,526	2,733	8.2
Van Buren	6.3	6.5	0.2	2,601	2,650	1.9	1,667	1,753	5.2	4,796	4,912	2.4
Washtenaw	4.5	4.7	0.2	8,621	8,881	3.0	3,370	3,872	14.9	9,959	11,775	18.2
Wayne	7.8	8.2	0.3	69,529	72,655	4.5	45,630	44,151	-3.2	163,232	168,782	3.4
Wexford	7.4	8.2	0.7	1,131	1,237	9.3	577	583	1.0	2,210	2,525	14.3

(cont. from page 1)

population of each county that is eligible for Medicaid. (These percentages include both the “Medicaid Only” eligibles and those who are enrolled in FIP and SSI.)

During the second quarter of 2007, twelve counties had at least 20 percent (one-fifth) of their population eligible for Medicaid. The high percentage indicates that there are large numbers of residents in those counties who are experiencing health care needs and do not have accessible or affordable health care coverage available. It is also worth noting that during the second quarter, eight rural counties more than doubled the number of Medicaid applications over the same

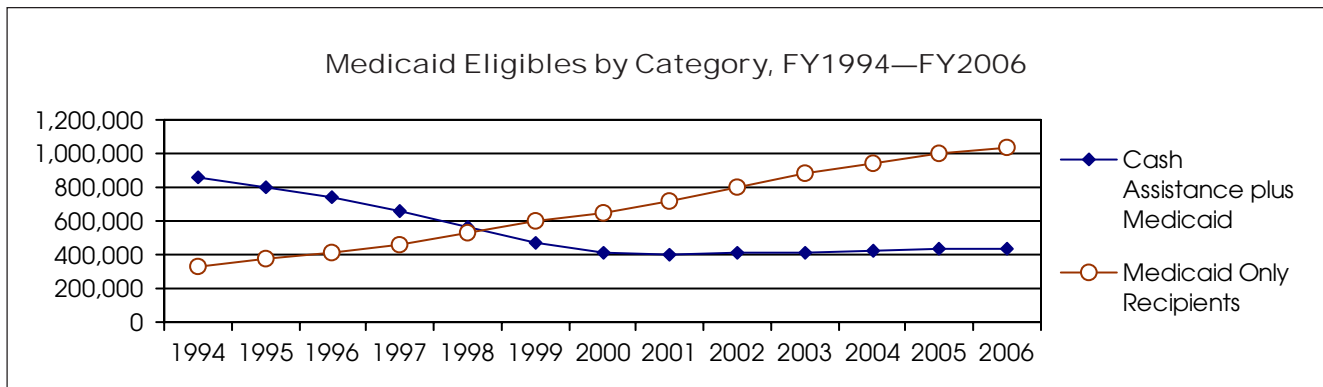
time last year. During the same periods, four urban counties with high concentrations of poverty showed decreases in applications but increases both in the number eligible for “Medicaid Only” and in their FIP caseloads. This suggests that these cases are remaining in need longer and that there may be a significant number of families who have lost health care coverage through an employer or are no longer able to afford their share of coverage.

As FIP’s rigid eligibility requirements make it less able to meet the needs of poor families, Medicaid continues to provide a health care safety net.

¹In some cases the Michigan number is slightly different from the county total.

Data sources: Unemployment: Bureau of Labor Statistics, Local Area Unemployment Statistics; Public Assistance: Michigan Department of Human Services.

Family Independence Program (Cash Assistance)									Medicaid							
Total Number of Applications			Average Number of Families Receiving Cash Assistance Per Month			Percent of Cases Without Earned Income, Out of Total Cases Expected to Work			Total Number of Applications			Average Number of Persons Eligible for Medicaid ONLY (Excludes FIP & SSI Recipients)			Percent of Population Eligible for Medicaid (Includes FIP & SSI Recipients) ²	
Qtr 2 2006	Qtr 2 2007	% change	Qtr 2 2006	Qtr 2 2007	% change	Qtr 2 2006	Qtr 2 2007		Qtr 2 2006	Qtr 2 2007	% change	Qtr 2 2006	Qtr 2 2007	% change	Qtr 2 2006	Qtr 2 2007
103	106	2.9	136	155	13.9	56%	58%		354	454	28.2	3,116	3,165	1.6	15.9%	16.3%
167	154	-7.8	264	267	0.9	60%	62%		871	821	-5.7	6,327	6,994	10.5	12.4%	13.4%
164	134	-18.3	207	230	11.3	43%	41%		660	481	-27.1	4,068	4,047	-0.5	18.0%	18.2%
193	150	-22.3	249	223	-10.3	61%	44%		802	771	-3.9	5,499	5,855	6.5	16.8%	17.6%
63	50	-20.6	72	85	18.5	39%	44%		362	346	-4.4	2,981	2,978	-0.1	14.2%	14.5%
267	283	6.0	349	394	12.9	47%	44%		1,102	1,179	7.0	8,060	8,641	7.2	12.2%	13.1%
66	39	-40.9	65	63	-2.1	**	**		285	236	-17.2	2,001	1,986	-0.7	15.6%	15.6%
531	512	-3.6	632	745	17.8	61%	50%		1,972	1,781	-9.7	12,268	12,690	3.4	10.3%	10.7%
296	267	-9.8	328	358	9.3	67%	61%		1,275	1,091	-14.4	8,220	8,817	7.3	16.4%	17.5%
35	42	20.0	48	45	-5.6	38%	25%		212	235	10.8	1,559	1,614	3.5	18.5%	19.1%
1,346	1,376	2.2	2,771	2,992	8.0	68%	66%		3,725	3,570	-4.2	22,607	23,602	4.4	20.1%	21.1%
244	200	-18.0	264	347	31.1	65%	47%		1,030	885	-14.1	7,239	7,082	-2.2	18.0%	18.4%
2,994	2,966	-0.9	3,368	4,193	24.5	70%	53%		11,604	10,570	-8.9	68,900	72,503	5.2	7.6%	8.1%
147	158	7.5	314	330	5.1	56%	53%		1,124	1,227	9.2	5,055	5,085	0.6	23.0%	23.3%
97	104	7.2	157	213	35.6	65%	42%		500	513	2.6	3,875	3,789	-2.2	22.4%	23.1%
21	19	-9.5	39	38	-2.6	34%	43%		120	133	10.8	939	953	1.5	16.3%	16.8%
98	92	-6.1	159	136	-14.1	**	**		440	397	-9.8	3,250	3,277	0.8	18.0%	18.1%
36	31	-13.9	54	75	39.5	36%	46%		259	234	-9.7	1,443	1,436	-0.5	19.9%	20.9%
76	127	67.1	82	144	75.2	50%	41%		429	512	19.3	3,536	3,863	9.2	16.7%	18.7%
500	439	-12.2	471	531	12.6	73%	46%		2,216	2,347	5.9	17,775	19,502	9.7	8.2%	8.9%
44	42	-4.5	40	43	5.8	100%	55%		221	218	-1.4	1,542	1,627	5.5	13.4%	14.1%
128	132	3.1	172	180	4.5	55%	48%		562	458	-18.5	3,970	3,974	0.1	19.5%	19.6%
1,449	1,315	-9.2	2,961	2,932	-1.0	49%	54%		4,026	4,050	0.6	24,332	25,640	5.4	19.0%	19.8%
881	796	-9.6	1,037	1,266	22.0	64%	56%		2,989	2,821	-5.6	17,318	18,820	8.7	13.2%	14.5%
303	348	14.9	375	445	18.9	59%	42%		1,330	1,258	-5.4	8,877	9,159	3.2	17.3%	18.3%
176	169	-4.0	229	194	-15.6	57%	58%		784	758	-3.3	6,082	6,823	12.2	16.8%	18.2%
31	33	6.5	47	53	11.3	87%	53%		162	155	-4.3	1,285	1,337	4.0	18.7%	19.7%
328	321	-2.1	292	384	31.4	53%	48%		1,237	1,235	-0.2	8,584	9,097	6.0	14.4%	15.5%
208	149	-28.4	260	341	30.9	54%	55%		878	884	0.7	7,339	7,569	3.1	15.6%	16.5%
413	409	-1.0	572	653	14.2	68%	49%		2,069	2,036	-1.6	12,047	11,697	-2.9	19.4%	19.3%
1,006	989	-1.7	1,249	1,423	14.0	63%	54%		3,389	3,522	3.9	19,368	21,919	13.2	7.7%	8.6%
14,015	12,731	-9.2	33,531	36,066	7.6	71%	72%		43,543	40,319	-7.4	253,950	259,616	2.2	21.3%	22.1%
229	211	-7.9	257	292	13.3	67%	61%		839	761	-9.3	5,212	5,551	6.5	21.1%	22.5%



¹In some cases the Michigan number is slightly different from the county total.

²Population figures based on U.S. Census Bureau county estimates from July of the previous year

*Data is unavailable or cannot be calculated.

Data sources: Unemployment: Bureau of Labor Statistics, Local Area Unemployment Statistics; Public Assistance: Michigan Department of Human Services.

Employment Trends by Selected Industries in Michigan
(data not seasonally adjusted, rounded to the nearest hundred)

Industry	Avg 2006 Qtr 2	Avg 2007 Qtr 2	% Change	Industry	Avg 2006 Qtr 2	Avg 2007 Qtr 2	% Change
TOTAL NONFARM	4,379,900	4,324,800	-1.3	Merchant Wholesalers			
TOTAL PRIVATE	3,702,433	3,651,967	-1.4	Nondurable Goods	49,233	48,100	-2.3
GOODS PRODUCING	853,300	806,900	-5.4	Wholesale Electronic Markets and Agents and Brokers	24,267	24,500	1.0
SERVICE-PROVIDING	3,526,600	3,517,900	-0.2	• Retail Trade	494,567	485,467	-1.8
Natural Resources and Mining	8,200	8,167	-0.4	Motor Vehicle and Parts Dealers	59,567	56,933	-4.4
Mining	5,673	6,533	-3.0	Furniture and Home Furnishings	17,600	17,067	-3.0
Construction	184,200	170,167	-7.6	Electronics and Appliance	17,533	17,433	-0.6
Construction of Buildings	43,767	41,733	-4.6	Building Material and Garden Equip. and Supplies Dealers	47,100	44,933	-4.6
Heavy and Civil Engineering	19,067	18,133	-4.9	Food and Beverage Stores	82,233	80,667	-1.9
Specialty Trade Contractors	121,367	110,300	-9.1	Health and Personal Care	33,500	33,567	0.2
Manufacturing	660,900	628,567	-4.9	Gasoline Stations	25,700	25,133	-2.2
• Durable Goods	513,967	484,800	-5.7	Clothing and Clothing Accessories	39,267	39,067	-0.5
Nonmetallic Mineral Products	15,300	14,267	-6.8	Sporting Goods, Hobby, Book, and Music Stores	23,267	22,333	-4.0
Primary Metal Manufacturing	26,467	25,233	-4.7	General Merchandise Stores	109,300	107,033	-2.1
Fabricated Metal Product	83,867	83,333	-0.6	Miscellaneous Store Retail	27,633	26,767	-3.1
Machinery Manufacturing	75,000	72,533	-3.3	• Transportation & Warehousing	129,300	126,367	-2.3
Computer and Electronic Products	20,900	21,267	1.8	Air Transportation	14,233	12,600	-11.5
Motor Vehicle Manufacturing	61,600	56,100	-8.9	Rail Transportation	4,733	4,500	-4.9
Motor Vehicle Parts Manufacturing	151,600	132,467	-12.6	Truck Transportation	39,200	39,867	1.7
Furniture and Related Products	25,100	24,900	-0.8	Warehousing and Storage	15,233	14,200	-6.8
Miscellaneous Manufacturing	17,967	17,933	-0.2	Information	66,867	66,633	-0.3
• Non-Durable Goods	146,933	143,767	-2.2	Publishing Industries	24,067	23,033	-4.3
Food Manufacturing	32,433	32,100	-1.0	Telecommunications	21,633	21,967	1.5
Printing and Related Support Activities	17,500	16,800	-4.0	Financial Activities	217,600	214,500	-1.4
Chemical Manufacturing	29,100	28,233	-3.0	Finance and Insurance	162,067	160,967	-0.7
Plastics and Rubber Products	42,433	41,533	-2.1	Real Estate	38,067	37,433	-1.7
Trade Transportation & Utilities	796,067	783,400	-1.6	Professional & Business Services	588,267	587,100	-0.2
• Wholesale Trade	172,200	171,567	-0.4	Legal Services	29,133	29,133	0.0
Merchant Wholesalers				Accounting and Tax Preparation	28,133	28,533	1.4
Durable Goods	98,700	98,967	0.3	Architectural Engineering	68,900	66,867	-3.0

Note: Industry details and subtotals may not sum to totals due to rounding.

Source: Department of Labor and Economic Growth/Office of Labor Market Information, Current Employment Statistics Section - (800) 225-3732

Employment Trends by Selected Industries in Michigan
(data not seasonally adjusted, rounded to the nearest hundred)

Industry	Avg 2006 Qtr 2	Avg 2007 Qtr 2	% Change	Industry	Avg 2006 Qtr 2	Avg 2007 Qtr 2	% Change
Computer Systems Design	39,333	39,267	-0.2	Other Services	178,933	178,600	-0.2
Management, Scientific and Technical Consulting Services	19,467	19,900	2.2	Repair and Maintenance	40,200	39,400	-2.0
Scientific Research and Development Services	23,900	24,867	4.0	Personal and Laundry Services	40,833	40,067	-1.9
Advertising and Related	15,267	14,967	-2.0	Religious Grantmaking Civic Professional	97,900	99,133	1.3
Other Professional Scientific and Technical Services	15,700	15,867	1.1	Government	677,467	672,833	-0.7
Management of Companies	62,867	61,800	-1.7	• Federal Government	54,200	53,300	-1.7
Administrative & Support Services	280,200	281,233	0.4	U.S. Postal Service	27,167	26,600	-2.1
Educational and Health Services	583,400	593,667	1.8	• State Government	166,133	167,533	0.8
• Educational Services (see also Government)	76,833	78,600	2.3	State Government Educational Services	94,200	94,900	0.7
• Health Care & Social Assistance	506,567	515,067	1.7	State Government Hospital Services	14,967	15,867	6.0
Ambulatory Health Care Services	171,767	175,867	2.4	• Local Government	457,133	452,000	-1.1
Offices of Physicians	68,733	70,333	2.3	Local Government Educational Services	268,067	263,200	-1.8
Offices of Dentists	31,900	32,000	0.3	Local Government Hospitals	13,000	13,033	0.3
Offices of Other Health Professionals	19,867	20,133	1.3	Local Government Elementary and Secondary Schools	246,867	241,600	-2.1
Outpatient Care Centers	14,133	14,733	4.2	Local Government Junior Colleges	20,533	20,667	0.6
Home Health Care Service	26,767	28,100	5.0				
Hospitals	182,700	184,900	1.2				
Nursing and Residential Care	92,000	93,467	1.6				
—Nursing Care Facilities	42,733	43,500	1.8				
Social Assistance	60,100	60,833	1.2				
—Individual and Family Services	25,667	26,367	2.7				
Leisure and Hospitality	418,000	421,167	0.8				
Performing Arts Spectator Activities	9,933	9,400	-5.4				
Amusement, Gambling & Recreation	53,233	53,033	-0.4				
Accommodation	35,367	35,633	0.8				
Food Services and Drinking	315,333	318,200	0.9				

VISIT OUR WEBSITE FOR MORE INFORMATION!

The "Work and Wages" section of the Michigan League for Human Services website has information on Workforce Development, Work Supports, Unemployment, and Self-Sufficiency. It also includes back issues of the Economic Security Bulletin. Go to <http://www.MiLHS.org> and click the "Work and Wages" tab at the right.

Note: Industry details and subtotals may not sum to totals due to rounding.

Source: Department of Labor and Economic Growth/Office of Labor Market Information, Current Employment Statistics Section - (800) 225-3732



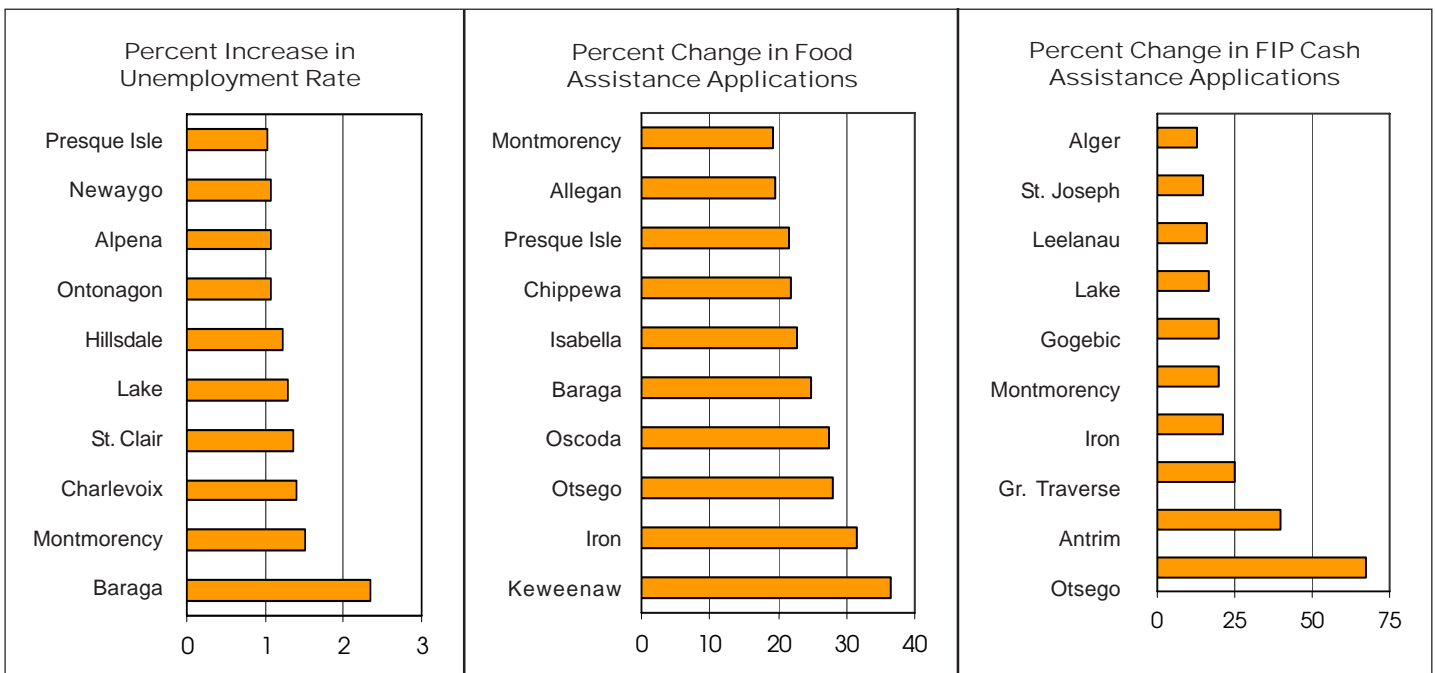
Michigan League for Human Services

1115 South Pennsylvania Avenue, Suite 202
 Lansing, MI 48912-1658
 (517) 487-5436 — Fax (517) 371-4546
 Web site: www.milhs.org

A United Way Agency

Nonprofit
 Organization
 U.S. Postage
Paid
 Lansing, MI
 Permit #1421

Percentage Change in Michigan Counties With Largest Increases
 First Quarter 2006 — First Quarter 2007



Sources: Unemployment: Bureau of Labor Statistics, Local Area Unemployment Statistics; Public Assistance: Michigan Department of Human Services