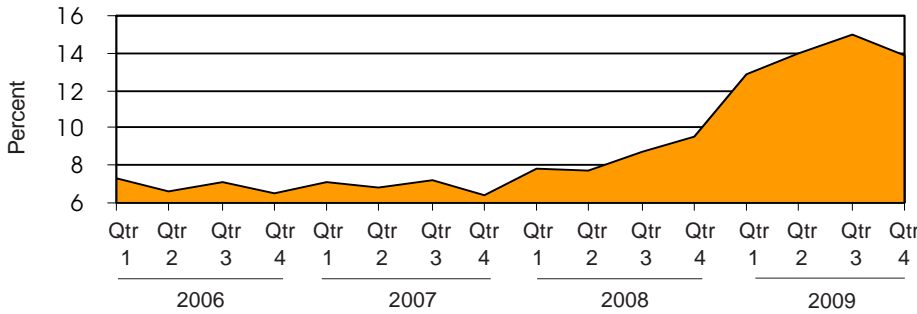


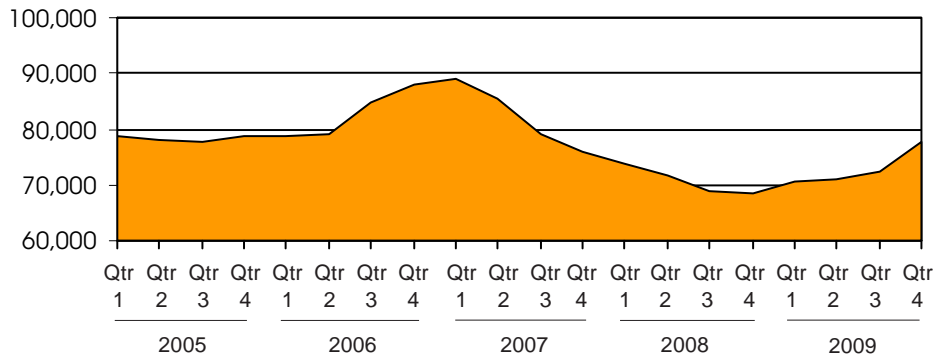


Michigan's Unemployment Rate Over the Past Four Years
(not seasonally adjusted)



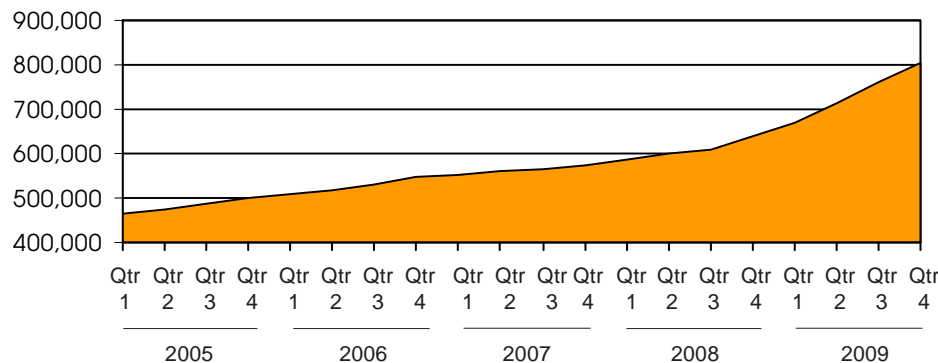
Source: Bureau of Labor Statistics

Family Independence Program Cases During the Past Five Years (regular FIP only)



Source: Michigan Department of Human Services

Food Assistance Households During the Past Five Years



Source: Michigan Department of Human Services


Food Assistance Cases Surpass 800,000; FIP Cases See Largest Increase in Three Years

Public Assistance

Michigan's Food Assistance Cases Reached a monthly average of more than 800,000 during the fourth quarter of 2009. This continues a steady increase in cases since 2000, and marks an increase of more than 75 percent over the past five years. During the quarter, an average of 16.8 percent of Michigan's population received Food Assistance. The fourth quarter also saw the largest increase in Family Independence Program (FIP) cases in more than three years, as the caseload went from 72,403 during the fourth quarter to 77,806.

NEW IN THIS BULLETIN

Because the Michigan Department of Human Services is not currently publishing assistance application data, the Economic Security Bulletin is unable to share that information. Instead, it will provide statistics on the percent of the state's and each county's population that is receiving Food Assistance and FIP. This is similar to what has been provided for Medicaid eligibles each quarter. Please let us know if you find this helpful at pruark@michleagueforhumansvs.org.

 Prepared by: Michigan League for Human Services	Unemployment (data not seasonally adjusted)						Food Assistance Program				
	Unemployment Rate			Number Unemployed			Average Number of Households Per Month			Percent of Population Receiving Assistance	
	County	Qtr 4 2008	Qtr 4 2009	+/- points	Qtr 4 2008	Qtr 4 2009	% change	Qtr 4 2008	Qtr 4 2009	% change	Qtr 4 2008
Michigan¹	9.4	13.9	4.5	463,506	673,916	45.4	634,960	803,950	26.6	13.2%	16.8%
Alcona	13.2	19.0	5.8	567	815	43.8	619	737	18.9	11.1%	14.2%
Alger	10.9	14.9	4.0	456	624	36.9	428	549	28.2	9.1%	12.1%
Allegan	8.8	13.6	4.8	4,783	7,326	53.2	4,909	6,345	29.3	10.0%	13.3%
Alpena	10.1	14.2	4.1	1,507	2,160	43.3	2,510	3,006	19.8	16.4%	19.5%
Antrim	12.2	16.7	4.5	1,399	1,934	38.2	1,190	1,460	22.8	11.4%	14.6%
Arenac	13.0	18.6	5.6	1,015	1,398	37.8	1,339	1,576	17.7	16.4%	20.7%
Baraga	16.9	25.7	8.9	728	1,163	59.8	496	570	14.9	12.2%	13.8%
Barry	7.7	10.7	3.1	2,285	3,139	37.4	2,698	3,524	30.6	10.2%	13.9%
Bay	8.5	12.8	4.3	4,617	6,943	50.4	7,635	9,357	22.5	14.3%	17.5%
Benzie	10.5	15.3	4.8	925	1,365	47.6	873	1,079	23.6	11.2%	14.0%
Berrien	9.1	13.7	4.7	7,151	10,651	48.9	11,289	13,743	21.7	14.5%	18.0%
Branch	10.1	13.7	3.6	2,209	2,982	35.0	2,711	3,578	32.0	12.9%	18.2%
Calhoun	8.6	12.3	3.7	5,824	8,250	41.7	12,508	15,777	26.1	18.6%	23.3%
Cass	8.1	11.6	3.5	2,190	3,051	39.3	3,295	4,112	24.8	14.9%	19.0%
Charlevoix	12.9	16.3	3.5	1,738	2,212	27.3	1,028	1,417	37.9	9.1%	12.7%
Cheboygan	14.3	15.4	1.1	1,660	1,710	3.0	1,859	2,129	14.5	15.1%	17.8%
Chippewa	10.5	13.3	2.8	1,824	2,323	27.4	2,025	2,656	31.2	10.8%	14.1%
Clare	12.7	17.6	4.9	1,641	2,269	38.3	3,131	3,745	19.6	21.0%	26.0%
Clinton	6.4	9.9	3.4	2,412	3,623	50.2	2,286	3,001	31.3	6.8%	8.7%
Crawford	11.1	15.3	4.2	689	935	35.7	1,055	1,244	17.9	15.2%	18.6%
Delta	9.5	13.0	3.5	1,875	2,547	35.8	2,531	2,965	17.1	13.2%	16.1%
Dickinson	8.3	12.1	3.7	1,180	1,690	43.2	1,291	1,645	27.4	9.4%	12.3%
Eaton	7.4	10.5	3.1	4,353	6,059	39.2	4,213	5,642	33.9	8.6%	11.5%
Emmet	12.0	16.0	4.0	2,370	3,203	35.1	1,677	2,039	21.5	10.5%	13.1%
Genesee	11.3	16.0	4.7	22,563	30,667	35.9	40,235	49,355	22.7	19.4%	24.1%
Gladwin	12.5	17.3	4.8	1,321	1,806	36.7	1,989	2,336	17.4	15.8%	19.4%
Gogebic	9.9	13.8	4.0	731	1,016	39.0	1,247	1,550	24.3	14.6%	18.5%
Gr. Traverse	8.5	12.9	4.4	4,070	6,188	52.0	4,502	5,593	24.2	10.3%	12.9%
Gratiot	10.1	14.0	3.9	1,970	2,731	38.7	2,441	3,026	24.0	13.4%	16.7%
Hillsdale	11.9	17.0	5.0	2,522	3,554	40.9	2,672	3,407	27.5	13.4%	17.8%
Houghton	8.3	11.0	2.7	1,453	1,910	31.4	1,945	2,395	23.2	10.6%	13.3%
Huron	10.2	15.0	4.8	1,631	2,302	41.2	1,858	2,250	21.1	11.7%	14.5%
Ingham	7.8	11.8	4.0	11,956	17,849	49.3	19,944	26,580	33.3	13.9%	18.0%
Ionia	9.8	13.7	4.0	2,933	4,079	39.1	3,428	4,417	28.8	11.6%	15.9%
Iosco	12.2	18.3	6.2	1,310	1,989	51.8	2,203	2,835	28.7	17.4%	22.4%
Iron	9.5	13.2	3.7	547	757	38.5	710	883	24.4	12.3%	15.9%
Isabella	6.3	8.6	2.3	2,442	3,346	37.0	6,084	8,424	38.4	14.7%	19.3%
Jackson	9.8	14.9	5.0	7,472	11,133	49.0	10,024	12,900	28.7	13.7%	17.5%
Kalamazoo	7.1	10.9	3.7	9,437	14,223	50.7	17,111	22,571	31.9	13.4%	17.1%
Kalkaska	10.5	15.7	5.2	895	1,361	52.1	1,249	1,590	27.4	16.1%	22.1%
Kent	7.8	11.5	3.7	24,742	35,854	44.9	35,129	44,471	26.6	12.4%	15.3%
Keweenaw	13.9	17.6	3.7	149	190	27.0	97	122	25.7	8.1%	11.3%
Lake	13.9	19.4	5.5	537	705	31.3	1,242	1,518	22.2	22.2%	27.9%
Lapeer	11.3	18.1	6.8	4,863	7,777	59.9	3,593	4,795	33.5	9.2%	12.7%
Leelanau	6.9	10.3	3.4	758	1,129	48.8	451	653	44.7	4.7%	6.8%
Lenawee	11.0	15.9	4.9	5,304	7,624	43.7	5,138	6,689	30.2	11.4%	15.2%
Livingston	7.8	12.6	4.8	7,119	11,192	57.2	3,862	5,293	37.1	4.6%	6.4%
Luce	11.7	15.7	4.0	310	419	35.1	466	523	12.3	14.5%	16.8%
Mackinac	17.0	18.5	1.5	957	1,026	7.2	479	614	28.3	9.2%	11.9%
Macomb	10.1	16.1	6.0	41,256	65,187	58.0	35,423	48,644	37.3	9.0%	12.7%

¹In some cases the Michigan number is slightly different from the county total.

Data sources: Unemployment: Bureau of Labor Statistics, Local Area Unemployment Statistics; Public Assistance: Michigan Department of Human Services.


Family Independence Program (Cash Assistance)			Child Day Care						Medicaid					
Average Number of Families Receiving Cash Assistance Per Month ²			Percent of Population Receiving Assistance		Average Number of Children Receiving Care Per Month		Average Payment Per Child		Average Number of Persons Eligible for Medicaid ONLY (Excludes FIP & SSI Recipients)			Percent of Population Eligible for Medicaid (Includes FIP & SSI Recipients) ³		
Qtr 4 2008	Qtr 4 2009	% change	Qtr 4 2008	Qtr 4 2009	Qtr 4 2008	Qtr 4 2009	Qtr 4 2008	Qtr 4 2009	Qtr 4 2008	Qtr 4 2009	% change	Qtr 4 2008	Qtr 4 2009	
73,664	80,999	10.0	2.0%	2.2%	98,260	69,426	\$322	\$312	1,246,316	1,348,618	8.2	16.7%	18.1%	
22	33	50.8	0.4%	0.8%	26	20	\$197	\$168	1,354	1,410	4.2	14.4%	15.6%	
22	25	15.4	0.6%	0.6%	43	17	\$150	\$186	1,211	1,269	4.8	15.2%	16.3%	
385	454	17.9	0.9%	1.0%	653	521	\$271	\$257	14,214	15,936	12.1	14.7%	16.5%	
193	231	19.7	1.7%	2.0%	280	215	\$241	\$219	4,738	4,763	0.5	21.0%	21.8%	
50	53	6.7	0.5%	0.5%	143	89	\$253	\$205	3,493	3,879	11.0	16.7%	18.5%	
98	75	-22.9	1.5%	1.2%	116	113	\$253	\$208	2,643	2,843	7.6	20.9%	22.3%	
47	50	5.7	1.2%	1.4%	62	37	\$144	\$191	1,234	1,246	0.9	17.9%	18.1%	
218	234	7.0	1.0%	1.1%	338	247	\$274	\$228	6,457	7,384	14.3	13.1%	14.9%	
682	694	1.9	1.6%	1.7%	1,346	1,015	\$274	\$257	14,210	15,229	7.2	17.2%	18.4%	
39	35	-11.9	0.5%	0.5%	96	67	\$217	\$274	2,415	2,655	9.9	16.0%	17.6%	
1,217	1,482	21.8	2.0%	2.5%	2,074	1,332	\$282	\$303	22,899	24,570	7.3	19.2%	20.8%	
282	383	35.5	1.7%	2.4%	375	298	\$256	\$251	6,981	7,483	7.2	18.7%	21.0%	
1,675	1,806	7.8	3.3%	3.5%	1,579	1,252	\$246	\$274	20,089	22,567	12.3	21.1%	23.4%	
321	341	6.2	1.7%	1.8%	499	352	\$271	\$281	7,572	8,392	10.8	18.6%	20.6%	
53	46	-12.0	0.4%	0.3%	130	94	\$219	\$230	3,123	3,556	13.8	13.5%	15.5%	
106	92	-12.9	0.9%	0.8%	176	105	\$236	\$231	4,672	4,730	1.2	20.8%	21.3%	
157	175	11.5	1.0%	1.1%	236	211	\$232	\$231	4,793	4,994	4.2	15.5%	16.4%	
265	283	6.7	2.2%	2.5%	235	142	\$240	\$256	5,617	5,851	4.2	24.5%	26.1%	
113	126	11.2	0.4%	0.4%	322	200	\$254	\$277	5,477	5,998	9.5	9.1%	9.9%	
68	63	-7.4	1.2%	1.1%	116	65	\$227	\$242	2,278	2,460	8.0	19.2%	20.7%	
147	156	5.9	1.0%	1.1%	282	180	\$208	\$183	5,497	5,724	4.1	18.1%	19.2%	
48	61	27.1	0.4%	0.5%	177	146	\$159	\$165	3,775	3,986	5.6	16.2%	17.4%	
251	278	10.7	0.6%	0.6%	770	494	\$306	\$297	10,120	11,487	13.5	11.2%	12.7%	
61	59	-2.7	0.4%	0.4%	209	158	\$198	\$219	4,916	5,028	2.3	16.6%	16.9%	
6,063	7,047	16.2	3.9%	4.6%	8,403	6,500	\$371	\$357	64,921	67,239	3.6	22.1%	23.7%	
171	169	-1.2	1.6%	1.7%	161	127	\$220	\$213	4,124	4,282	3.8	20.2%	21.2%	
169	195	15.6	2.9%	3.4%	87	60	\$174	\$165	2,226	2,300	3.3	19.1%	20.5%	
144	153	6.2	0.4%	0.4%	636	391	\$248	\$247	11,496	11,870	3.3	15.2%	15.7%	
192	178	-7.6	1.3%	1.1%	402	239	\$251	\$235	6,441	6,790	5.4	18.5%	19.5%	
233	302	29.8	1.4%	1.9%	299	229	\$231	\$220	6,503	7,144	9.8	17.8%	19.9%	
69	93	34.3	0.5%	0.6%	136	87	\$214	\$211	4,946	5,164	4.4	16.2%	17.2%	
93	114	22.9	0.6%	0.9%	202	141	\$207	\$192	4,846	5,144	6.1	17.7%	19.1%	
1,411	1,767	25.2	1.4%	1.8%	2,575	1,823	\$344	\$345	34,483	36,048	4.5	16.0%	17.1%	
227	312	37.4	0.9%	1.3%	402	270	\$245	\$254	8,174	8,942	9.4	15.4%	17.3%	
144	161	12.1	1.4%	1.5%	218	114	\$244	\$211	4,444	4,727	6.4	21.1%	22.8%	
41	77	89.3	0.9%	1.8%	43	35	\$195	\$144	2,024	2,001	-1.1	20.4%	21.7%	
220	212	-3.6	0.8%	0.7%	504	304	\$244	\$248	7,845	8,220	4.8	14.3%	14.9%	
992	1,241	25.1	1.6%	2.1%	1,229	931	\$271	\$280	20,789	22,328	7.4	16.9%	18.4%	
1,760	2,153	22.4	1.9%	2.4%	2,484	1,841	\$297	\$305	28,657	30,504	6.4	15.6%	16.9%	
51	68	34.0	0.7%	1.0%	146	81	\$238	\$215	3,343	3,555	6.4	22.5%	24.4%	
4,246	4,968	17.0	1.8%	2.1%	6,685	4,621	\$326	\$328	78,925	85,323	8.1	17.0%	18.4%	
0	3	700.0	0.0%	0.2%	1	2	\$111	\$211	258	269	4.5	13.2%	13.8%	
84	115	37.1	1.9%	2.7%	111	67	\$215	\$203	2,106	2,197	4.3	26.1%	27.9%	
259	316	21.9	0.7%	1.0%	439	357	\$272	\$276	9,985	11,496	15.1	12.8%	14.9%	
10	17	70.0	0.1%	0.2%	56	55	\$225	\$254	1,429	1,701	19.0	7.1%	8.6%	
396	487	23.0	0.9%	1.2%	840	609	\$280	\$267	12,591	13,834	9.9	15.1%	16.9%	
226	251	10.9	0.3%	0.3%	337	274	\$315	\$347	10,876	12,971	19.3	6.7%	8.0%	
41	39	-4.9	1.8%	1.6%	43	32	\$223	\$224	1,112	1,086	-2.3	21.8%	21.9%	
25	29	16.2	0.5%	0.7%	31	28	\$184	\$177	1,336	1,382	3.4	14.8%	15.6%	
3,052	3,770	23.5	1.0%	1.2%	4,661	3,606	\$356	\$347	85,329	95,438	11.8	12.6%	14.4%	

¹ In some cases the Michigan number is slightly different from the county total.

² Population figures based on U.S. Census Bureau county estimates from July of the previous year.

³ Includes both regular and extended FIP.

Data sources: Unemployment: Bureau of Labor Statistics, Local Area Unemployment Statistics; Public Assistance: Michigan Department of Human Services.

 Prepared by: Michigan League for Human Services	Unemployment (data not seasonally adjusted)						Food Assistance Program				
	Unemployment Rate			Number Unemployed			Average Number of Households Per Month			Percent of Population Receiving Assistance	
	Qtr 4 2008	Qtr 4 2009	+/- points	Qtr 4 2008	Qtr 4 2009	% change	Qtr 4 2008	Qtr 4 2009	% change	Qtr 4 2008	Qtr 4 2009
Manistee	10.4	14.0	3.6	1,196	1,593	33.2	1,687	2,007	19.0	13.9%	16.6%
Marquette	7.5	10.4	2.9	2,714	3,721	37.1	3,519	4,820	36.9	10.1%	13.3%
Mason	10.5	14.3	3.8	1,546	2,081	34.6	2,000	2,489	24.4	15.1%	18.9%
Mecosta	9.7	13.5	3.9	1,946	2,663	36.9	4,413	5,318	20.5	19.4%	23.1%
Menominee	7.3	11.9	4.7	952	1,529	60.7	1,363	1,692	24.1	11.5%	14.7%
Midland	6.8	10.3	3.5	2,933	4,415	50.5	4,129	5,045	22.2	10.3%	12.7%
Missaukee	12.4	16.2	3.8	794	990	24.6	832	1,067	28.2	12.8%	17.1%
Monroe	9.9	14.2	4.4	7,458	10,674	43.1	6,550	8,336	27.3	9.2%	12.1%
Montcalm	12.7	17.3	4.7	3,321	4,537	36.6	4,288	5,368	25.2	15.5%	19.6%
Montmorency	16.8	22.2	5.4	689	920	33.5	828	997	20.5	16.3%	19.7%
Muskegon	10.4	15.9	5.5	9,171	13,858	51.1	17,616	21,604	22.6	20.4%	25.2%
Newaygo	10.6	14.2	3.7	2,400	3,187	32.8	3,292	4,338	31.8	15.4%	21.0%
Oakland	8.1	14.0	6.0	48,640	83,351	71.4	37,041	50,242	35.6	6.2%	8.6%
Oceana	12.6	18.0	5.4	1,738	2,416	39.0	2,122	2,468	16.3	18.5%	21.7%
Ogemaw	10.6	14.3	3.7	1,007	1,380	37.0	2,178	2,531	16.2	20.7%	24.4%
Ontonagon	12.2	19.1	6.9	400	611	52.7	440	522	18.6	11.2%	14.4%
Osceola	11.4	16.5	5.1	1,078	1,493	38.6	1,659	2,113	27.4	15.7%	21.2%
Oscoda	15.9	21.4	5.5	614	835	35.9	841	999	18.7	18.3%	22.7%
Otsego	12.4	16.8	4.4	1,446	1,950	34.9	1,735	2,125	22.5	15.6%	19.5%
Ottawa	8.1	12.9	4.7	10,800	16,639	54.1	7,282	11,484	57.7	6.5%	9.8%
Presque Isle	15.6	19.5	3.9	908	1,149	26.6	743	879	18.3	10.4%	12.8%
Roscommon	12.3	16.3	4.0	1,239	1,631	31.6	2,388	2,849	19.3	18.9%	23.1%
Saginaw	9.2	13.3	4.1	8,658	12,185	40.7	17,456	21,449	22.9	18.0%	22.1%
Saint Clair	12.4	17.5	5.1	10,199	14,075	38.0	10,734	13,543	26.2	13.2%	17.1%
Saint Joseph	10.2	13.4	3.2	3,175	4,104	29.2	4,103	5,178	26.2	14.8%	19.4%
Sanilac	12.9	17.9	5.0	2,690	3,622	34.7	3,134	3,772	20.4	16.3%	20.0%
Schoolcraft	12.3	15.3	2.9	475	590	24.3	592	640	8.2	15.2%	16.5%
Shiawassee	11.2	15.6	4.3	3,974	5,400	35.9	4,454	5,411	21.5	13.8%	17.1%
Tuscola	11.9	16.8	4.9	3,262	4,532	38.9	3,124	3,962	26.8	12.9%	17.0%
Van Buren	9.7	14.0	4.3	3,901	5,577	43.0	5,474	6,794	24.1	15.6%	19.4%
Washtenaw	6.3	8.9	2.6	11,608	16,017	38.0	14,063	18,256	29.8	7.6%	9.7%
Wayne	11.1	16.6	5.5	95,831	143,444	49.7	184,816	226,376	22.5	19.9%	24.5%
Wexford	13.6	18.6	5.1	1,959	2,621	33.8	2,926	3,458	18.2	20.5%	24.2%

FACT

The deadline for filing state and federal income tax forms is April 15, but local tax forms may have a later filing deadline. See the Michigan League for Human Services' Money Back in Michigan packet (available at www.MiLHS.org) for information on tax credits and deductions for working Michigan families.

¹In some cases the Michigan number is slightly different from the county total.

Data sources: Unemployment: Bureau of Labor Statistics, Local Area Unemployment Statistics; Public Assistance: Michigan Department of Human Services.

Family Independence Program (Cash Assistance)			Child Day Care				Medicaid						
Average Number of Families Receiving Cash Assistance Per Month ²			Percent of Population Receiving Assistance		Average Number of Children Receiving Care Per Month		Average Payment Per Child		Average Number of Persons Eligible for Medicaid ONLY (Excludes FIP & SSI Recipients)			Percent of Population Eligible for Medicaid (Includes FIP & SSI Recipients) ³	
Qtr 4 2008	Qtr 4 2009	% change	Qtr 4 2008	Qtr 4 2009	Qtr 4 2008	Qtr 4 2009	Qtr 4 2008	Qtr 4 2009	Qtr 4 2008	Qtr 4 2009	% change	Qtr 4 2008	Qtr 4 2009
136	161	18.1	1.4%	1.7%	148	70	\$200	\$219	3,295	3,395	3.0	17.2%	18.1%
181	196	8.1	0.6%	0.7%	329	266	\$215	\$208	7,335	7,897	7.7	13.4%	14.4%
161	146	-9.1	1.4%	1.3%	364	298	\$234	\$231	4,545	4,947	8.8	19.4%	21.1%
190	175	-7.7	1.2%	1.0%	244	182	\$230	\$210	6,750	6,911	2.4	19.8%	20.2%
72	71	-0.5	0.7%	0.8%	150	94	\$170	\$193	3,265	3,529	8.1	15.7%	17.2%
242	300	23.9	0.7%	0.9%	500	355	\$267	\$271	9,508	9,888	4.0	13.9%	14.6%
40	58	45.0	0.6%	1.1%	102	79	\$262	\$199	2,136	2,408	12.7	16.2%	18.8%
660	783	18.6	1.1%	1.3%	769	580	\$326	\$329	14,660	16,326	11.4	12.1%	13.6%
227	232	2.2	0.9%	1.0%	371	246	\$268	\$249	10,398	10,915	5.0	19.8%	21.0%
36	42	16.5	1.0%	1.0%	73	35	\$199	\$202	1,797	1,832	2.0	21.3%	22.2%
2,889	3,315	14.7	4.5%	5.2%	2,907	2,226	\$272	\$277	26,532	28,503	7.4	22.8%	24.8%
233	293	25.6	1.2%	1.5%	308	232	\$250	\$258	8,110	9,162	13.0	20.2%	22.9%
3,402	4,081	19.9	0.7%	0.9%	5,045	3,345	\$368	\$367	86,744	96,751	11.5	9.3%	10.4%
247	282	14.3	2.7%	3.0%	330	194	\$240	\$231	5,861	5,962	1.7	26.0%	26.9%
136	176	29.7	1.6%	2.2%	297	195	\$227	\$219	4,223	4,244	0.5	24.8%	25.6%
26	25	-3.8	1.1%	1.2%	29	16	\$256	\$175	958	960	0.2	17.7%	18.1%
101	114	12.2	1.1%	1.3%	141	139	\$229	\$232	3,583	4,188	16.9	19.5%	22.8%
47	42	-10.6	1.4%	1.2%	44	26	\$234	\$196	1,586	1,689	6.5	22.1%	23.6%
124	122	-1.9	1.3%	1.3%	326	249	\$271	\$249	4,102	4,588	11.9	20.3%	22.8%
457	559	22.2	0.4%	0.5%	1,181	888	\$276	\$276	22,682	26,873	18.5	9.9%	11.7%
40	40	-0.8	0.6%	0.5%	50	26	\$213	\$215	1,641	1,790	9.0	14.7%	16.0%
140	166	18.3	1.3%	1.6%	237	166	\$264	\$193	4,415	4,473	1.3	21.8%	22.8%
2,504	2,642	5.5	3.4%	3.6%	3,753	2,911	\$295	\$288	28,631	30,547	6.7	21.3%	22.7%
868	1,015	16.9	1.4%	1.6%	1,290	850	\$303	\$276	22,136	24,735	11.7	16.0%	18.1%
425	433	1.7	1.7%	1.8%	483	366	\$258	\$277	11,090	12,139	9.5	21.3%	23.4%
173	206	19.3	1.0%	1.3%	332	240	\$241	\$235	7,382	7,829	6.1	20.1%	21.9%
37	49	32.4	1.1%	1.6%	42	36	\$183	\$165	1,399	1,277	-8.7	21.3%	20.4%
374	413	10.4	1.3%	1.5%	584	375	\$249	\$249	10,156	10,858	6.9	17.6%	19.1%
259	283	9.5	1.2%	1.3%	388	263	\$237	\$243	8,448	9,371	10.9	18.1%	20.3%
454	529	16.4	1.4%	1.7%	611	419	\$265	\$293	13,643	14,885	9.1	21.4%	23.3%
1,120	1,229	9.7	0.8%	0.9%	2,087	1,486	\$368	\$379	25,367	27,933	10.1	9.4%	10.3%
30,610	31,066	1.5	4.5%	4.6%	32,951	22,080	\$340	\$328	298,351	318,461	6.7	23.5%	25.1%
208	210	1.0	1.5%	1.6%	376	271	\$255	\$241	6,535	6,601	1.0	25.1%	25.7%

FACT

Michigan residents should be strongly encouraged to fill out their U.S. Census forms, which they have likely received in the mail in March. Census information affects the number of Congressional seats Michigan has in the U.S. House of Representatives. Additionally, census data is used to advocate for causes and provide an understanding of the population in a given area.

¹ In some cases the Michigan number is slightly different from the county total.

² Population figures based on U.S. Census Bureau county estimates from July of the previous year.

³ Includes both regular and extended FIP.

Data sources: Unemployment: Bureau of Labor Statistics, Local Area Unemployment Statistics; Public Assistance: Michigan Department of Human Services.

Employment Trends by Selected Industries in Michigan
(data not seasonally adjusted, rounded to the nearest hundred)

Industry	Avg 2008 Qtr 4	Avg 2009 Qtr 4	% Change	Industry	Avg 2008 Qtr 4	Avg 2009 Qtr 4	% Change
TOTAL NONFARM	4,129,100	3,889,800	-5.8	Wholesale Electronic Markets and Agents and Brokers	23,400	19,000	-18.8
TOTAL PRIVATE	3,462,800	3,235,400	-6.6	•Retail Trade	480,400	451,100	-6.1
GOODS PRODUCING	716,500	596,500	-16.7	Motor Vehicle and Parts Dealers	53,700	47,800	-11.0
SERVICE-PROVIDING	3,412,600	3,293,400	-3.5	Building Material and Garden Equip. and Supplies Dealers	40,300	37,600	-6.7
Natural Resources and Mining	8,000	7,600	-5.0	Food and Beverage Stores	79,400	72,500	-8.7
Construction	151,300	126,100	-16.7	Health and Personal Care	33,500	31,500	-6.0
Construction of Buildings	33,500	28,600	-14.6	Gasoline Stations	23,800	23,400	-1.7
Heavy and Civil Engineering	17,000	15,200	-10.6	Clothing and Clothing Accessories	41,600	38,800	-6.7
Specialty Trade Contractors	100,700	82,200	-18.4	Sporting Goods, Hobby, Book, and Music Stores	23,700	23,100	-2.5
Manufacturing	557,200	462,800	-16.9	General Merchandise Stores	115,200	113,400	-1.6
•Durable Goods	422,400	340,500	-19.4	Miscellaneous Store Retail	25,600	23,400	-8.6
Nonmetallic Mineral Products	13,200	10,800	-18.2	•Transportation & Warehousing & Utilities	122,000	110,500	-9.4
Primary Metal Manufacturing	22,700	21,400	-5.7	Air Transportation	13,800	11,900	-13.8
Fabricated Metal Product	74,200	65,500	-11.7	Rail Transportation	4,500	4,400	-2.2
Machinery Manufacturing	66,100	55,600	-15.9	Truck Transportation	38,500	33,600	-12.7
Computer and Electronic Products	21,100	20,600	-2.4	Warehousing and Storage	12,500	11,100	-11.2
Motor Vehicle Manufacturing	46,000	29,600	-35.7	Information	60,800	53,500	-12.0
Motor Vehicle Parts Manufacturing	106,400	81,500	-23.4	Publishing Industries	20,700	17,900	-13.5
Furniture and Related Products	23,600	20,600	-12.7	Telecommunications	21,900	20,500	-6.4
•Non-Durable Goods	134,900	122,300	-9.3	Financial Activities	199,700	187,700	-6.0
Food Manufacturing	34,600	34,500	-0.3	Finance and Insurance	148,700	141,300	-5.0
Printing and Related Support Activities	16,200	15,600	-3.7	Real Estate	35,300	33,100	-6.2
Chemical Manufacturing	27,600	26,500	-4.0	Professional & Business Services	541,500	518,300	-4.3
Plastics and Rubber Products	35,700	32,500	-9.0	Legal Services	28,600	27,500	-3.8
Trade Transportation & Utilities	764,800	709,200	-7.3	Accounting, Tax Preparation, Bookkeeping & Payroll Services	29,100	30,700	5.5
•Wholesale Trade	162,500	147,500	-9.2	Architectural Engineering	61,400	52,300	-14.8
Merchant Wholesalers Durable Goods	91,800	83,300	-9.3				
Merchant Wholesalers Nondurable Goods	47,200	45,200	-4.2				

Note: Industry details and subtotals may not sum to totals due to rounding.

Source: Department of Labor and Economic Growth/Office of Labor Market Information, Current Employment Statistics Section - (800) 225-3732

Employment Trends by Selected Industries in Michigan
(data not seasonally adjusted, rounded to the nearest hundred)

Industry	Avg 2008 Qtr 4	Avg 2009 Qtr 4	% Change	Industry	Avg 2008 Qtr 4	Avg 2009 Qtr 4	% Change
Computer Systems Design	38,800	36,500	-5.9	Government	666,400	654,400	-1.8
Management, Scientific and Technical Consulting Services	18,100	16,400	-9.4	• Federal Government	53,200	54,400	2.3
Scientific Research and Development Services	19,900	18,800	-5.5	U.S. Postal Service	25,700	23,900	-7.0
Advertising and Related	14,500	13,200	-9.0	• State Government	180,100	181,400	0.7
Management of Companies	53,000	48,700	-8.1	State Government Educational Services	109,500	112,600	2.8
Administrative & Support Services	256,700	250,200	-2.5	State Government Hospital Services	16,800	16,800	0.0
Educational and Health Services	618,100	627,700	1.6	• Local Government	433,000	418,600	-3.3
• Educational Services (see also Government)	83,600	89,600	7.2	Local Government Educational Services	248,200	237,300	-4.4
• Health Care & Social Assistance	534,500	538,100	0.7	Local Government Hospitals	13,700	13,700	0.0
Ambulatory Health Care Services	181,900	186,200	2.4	Local Government Elementary and Secondary Schools	222,900	213,500	-4.2
Offices of Physicians	70,100	72,200	3.0	Local Government Junior Colleges	24,400	23,800	-2.5
Outpatient Care Centers	15,600	15,700	0.6				
Home Health Care Service	31,600	31,800	0.6				
Hospitals	192,900	193,300	0.2				
Nursing and Residential Care	96,200	95,100	-1.1				
—Nursing Care Facilities	42,700	41,800	-2.1				
Social Assistance	63,500	63,600	0.2				
—Individual and Family Services	28,200	27,900	-1.1				
Leisure and Hospitality	387,600	374,400	-3.4				
Performing Arts Spectator Activities	9,200	9,300	1.1				
Amusement, Gambling & Recreation	43,400	39,600	-8.8				
Accommodation	31,800	29,800	-6.3				
Food Services and Drinking	299,000	292,700	-2.1				
Other Services	173,600	168,200	-3.1				
Repair and Maintenance	37,000	33,900	-8.4				
Personal and Laundry Services	39,000	36,500	-6.4				
Religious Grantmaking Civic Professional	97,600	97,800	0.2				

VISIT OUR WEBSITE FOR MORE INFORMATION!

The "Work and Wages" section of the Michigan League for Human Services website has information on Workforce Development, Work Supports, Unemployment, and Self-Sufficiency. It also includes back issues of the Economic Security Bulletin. Go to www.MiLHS.org and click the "Work and Wages" tab at the left.

Note: Industry details and subtotals may not sum to totals due to rounding.

Source: Department of Labor and Economic Growth/Office of Labor Market Information, Current Employment Statistics Section - (800) 225-3732



Michigan League for Human Services

1115 South Pennsylvania Avenue, Suite 202
 Lansing, MI 48912-1658
 (517) 487-5436 — Fax (517) 371-4546
 Web site: www.milhs.org

A United Way Agency

Percentage Change in Michigan Counties With Largest Increases
 Fourth Quarter 2008 — Fourth Quarter 2009

Percentage Point Change in Unemployment Rate		Percent Change in Food Assistance Households		Percent Change in FIP Cash Assistance Families	
Baraga	8.9	Ottawa	57.7	Keweenaw	700.0
Ontonagon	6.9	Leelanau	44.7	Iron	89.3
Lapeer	6.8	Isabella	38.4	Leelanau	70.0
Iosco	6.2	Charlevoix	37.9	Alcona	50.8
Macomb	6.0	Macomb	37.3	Missaukee	45.0
Oakland	6.0	Livingston	37.1	Ionia	37.4
Alcona	5.8	Marquette	36.9	Lake	37.1
Arenac	5.6	Oakland	35.6	Branch	35.5
Lake	5.5	Eaton	33.9	Houghton	34.3
Oscoda	5.5	Lapeer	33.5	Kalkaska	34.0

Note: Counties in bold have population of 100,000 or more.

Sources: Unemployment: Bureau of Labor Statistics, Local Area Unemployment Statistics; Public Assistance: Michigan Department of Human Services