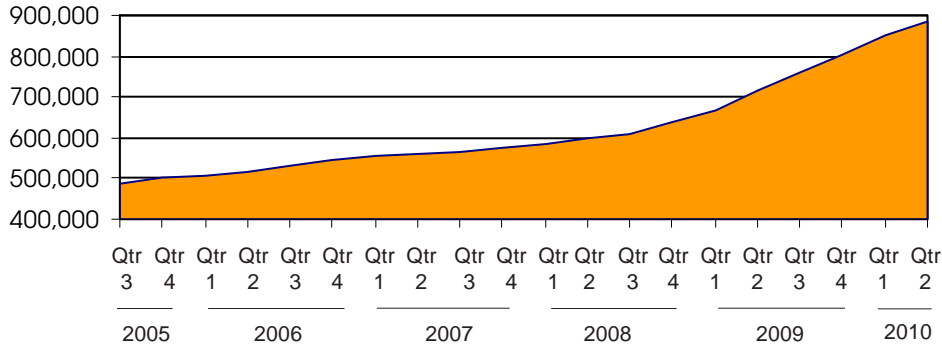


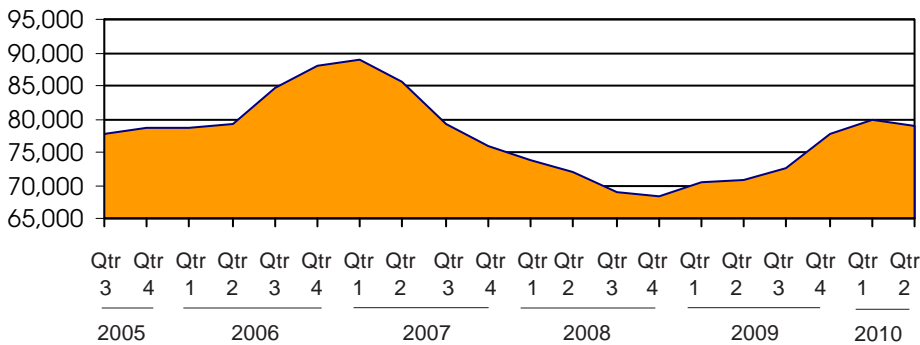


Food Assistance Households During the Past Five Years



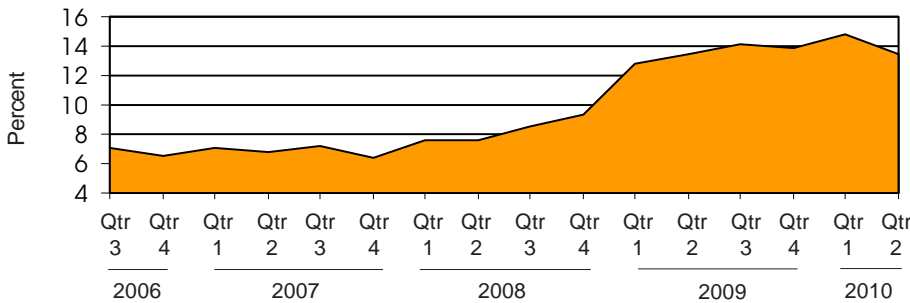
Source: Michigan Department of Human Services

Family Independence Program Cases During the Past Five Years (Regular FIP only)



Source: Michigan Department of Human Services

Michigan's Unemployment Rate Over the Past Four Years (not seasonally adjusted)



Source: Bureau of Labor Statistics

Large Counties see Significant Increases in Public Assistance.

Cash Assistance


During the second quarter, there were 64 counties that increased their Family Independence Program cases and 19 counties that decreased since the same time last year. Statewide, there was a 10.6 percent increase in cases, and several large counties saw significant increases: Livingston had 30.4 percent more cases than at the same time last year, while Oakland increased by 25 percent, Kalamazoo by 24.5 percent, Jackson by 24.1 percent, and Macomb by 21.7 percent.

Food Assistance

Caseloads increased by 30 percent over the same time last year, bringing the total caseload to 885,070 for the second quarter with 18.1 percent of the state's total population receiving Food Assistance. More than one-fourth of residents in Wayne, Genesee and Muskegon counties (plus some smaller counties) were in households receiving Food Assistance.

Unemployment

Forty-seven counties saw an increase in unemployment between the second quarter of 2009 and that of 2010, while 35 saw a decrease. There were 27 counties with an unemployment rate of more than 15 percent in the second quarter of 2010.

|  Prepared by: Michigan League for Human Services | Unemployment (data not seasonally adjusted) | | | | | | Food Assistance Program | | | | |
|---|--|---------------|---------------|-------------------|----------------|---------------|--|----------------|---------------|--|---------------|
| | Unemployment Rate | | | Number Unemployed | | | Average Number of Households Per Month | | | Percent of Population Receiving Assistance ² | |
| | County | Qtr 2 2009 | Qtr 2 2010 | +/- points | Qtr 2 2009 | Qtr 2 2010 | % change | Qtr 2 2009 | Qtr 2 2010 | % change | Qtr 2 2009 |
| Michigan¹ | 12.9 | 14.8 | 1.9 | 629,537 | 712,813 | 13.2 | 668,052 | 850,056 | 27.2 | 13.9% | 17.6% |
| Alcona | 18.1 | 19.1 | 1.0 | 767 | 768 | 0.0 | 666 | 834 | 25.3 | 12.5% | 15.7% |
| Alger | 13.5 | 14.1 | 0.5 | 580 | 599 | 3.3 | 474 | 583 | 23.2 | 10.0% | 13.0% |
| Allegan | 12.5 | 12.6 | 0.1 | 6,828 | 6,763 | -1.0 | 5,717 | 6,767 | 18.4 | 12.0% | 14.1% |
| Alpena | 13.6 | 13.8 | 0.2 | 2,050 | 2,027 | -1.1 | 2,746 | 3,186 | 16.0 | 17.7% | 20.7% |
| Antrim | 14.3 | 15.8 | 1.4 | 1,673 | 1,782 | 6.5 | 1,331 | 1,592 | 19.6 | 12.9% | 15.4% |
| Arenac | 15.6 | 16.5 | 0.9 | 1,265 | 1,252 | -1.1 | 1,491 | 1,684 | 13.0 | 18.8% | 21.8% |
| Baraga | 24.4 | 24.9 | 0.5 | 1,099 | 1,068 | -2.8 | 553 | 639 | 15.6 | 13.8% | 15.1% |
| Barry | 10.0 | 10.2 | 0.2 | 2,952 | 2,998 | 1.6 | 3,217 | 3,758 | 16.8 | 12.6% | 14.5% |
| Bay | 11.9 | 12.3 | 0.4 | 6,516 | 6,729 | 3.3 | 8,360 | 10,063 | 20.4 | 15.6% | 18.6% |
| Benzie | 12.6 | 14.9 | 2.3 | 1,100 | 1,322 | 20.2 | 1,007 | 1,170 | 16.2 | 12.9% | 15.1% |
| Berrien | 12.2 | 13.1 | 0.9 | 9,587 | 10,155 | 5.9 | 12,329 | 14,763 | 19.7 | 16.2% | 19.1% |
| Branch | 14.5 | 12.9 | -1.6 | 3,163 | 2,700 | -14.6 | 3,203 | 3,743 | 16.9 | 15.7% | 18.5% |
| Calhoun | 11.7 | 11.6 | -0.1 | 8,081 | 7,952 | -1.6 | 14,612 | 16,426 | 12.4 | 21.8% | 23.8% |
| Cass | 11.0 | 10.9 | -0.1 | 2,818 | 2,742 | -2.7 | 3,765 | 4,294 | 14.1 | 17.3% | 19.5% |
| Charlevoix | 14.0 | 14.6 | 0.6 | 1,928 | 1,991 | 3.2 | 1,233 | 1,613 | 30.9 | 10.9% | 14.3% |
| Cheboygan | 12.3 | 11.6 | -0.7 | 1,462 | 1,306 | -10.7 | 2,013 | 2,352 | 16.9 | 16.4% | 19.5% |
| Chippewa | 12.4 | 13.7 | 1.3 | 2,120 | 2,356 | 11.1 | 2,307 | 2,900 | 25.7 | 12.2% | 15.3% |
| Clare | 16.0 | 16.5 | 0.5 | 2,103 | 2,111 | 0.4 | 3,426 | 3,924 | 14.5 | 23.4% | 27.1% |
| Clinton | 9.3 | 9.3 | 0.0 | 3,439 | 3,467 | 0.8 | 2,705 | 3,464 | 28.0 | 8.0% | 9.7% |
| Crawford | 13.2 | 13.1 | 0.0 | 860 | 842 | -2.1 | 1,152 | 1,351 | 17.3 | 16.5% | 20.0% |
| Delta | 12.1 | 12.6 | 0.6 | 2,376 | 2,426 | 2.1 | 2,739 | 3,196 | 16.7 | 14.6% | 17.2% |
| Dickinson | 11.8 | 11.8 | 0.0 | 1,707 | 1,664 | -2.5 | 1,507 | 1,752 | 16.3 | 11.2% | 13.3% |
| Eaton | 10.2 | 9.7 | -0.4 | 5,917 | 5,657 | -4.4 | 4,924 | 6,283 | 27.6 | 10.3% | 12.4% |
| Emmet | 13.7 | 15.3 | 1.6 | 2,659 | 2,942 | 10.6 | 1,908 | 2,255 | 18.2 | 12.3% | 14.1% |
| Genesee | 15.0 | 14.6 | -0.4 | 29,982 | 28,759 | -4.1 | 44,255 | 53,301 | 20.4 | 21.4% | 25.5% |
| Gladwin | 16.3 | 16.7 | 0.5 | 1,699 | 1,715 | 0.9 | 2,130 | 2,504 | 17.6 | 17.0% | 20.2% |
| Gogebic | 13.8 | 14.9 | 1.1 | 1,026 | 1,084 | 5.7 | 1,405 | 1,675 | 19.2 | 16.7% | 19.5% |
| Gr. Traverse | 11.6 | 12.4 | 0.8 | 5,635 | 5,987 | 6.3 | 5,197 | 6,117 | 17.7 | 11.9% | 14.0% |
| Gratiot | 13.9 | 13.2 | -0.7 | 2,762 | 2,594 | -6.1 | 2,756 | 3,240 | 17.6 | 15.2% | 17.4% |
| Hillsdale | 17.7 | 15.7 | -2.0 | 3,722 | 3,106 | -16.6 | 3,065 | 3,514 | 14.6 | 15.7% | 18.1% |
| Houghton | 11.3 | 12.0 | 0.6 | 1,971 | 2,057 | 4.4 | 2,108 | 2,806 | 33.1 | 11.8% | 14.9% |
| Huron | 14.6 | 14.4 | -0.1 | 2,370 | 2,219 | -6.3 | 2,086 | 2,363 | 13.3 | 13.1% | 15.2% |
| Ingham | 11.0 | 11.0 | 0.0 | 16,702 | 16,663 | -0.2 | 22,903 | 29,903 | 30.6 | 15.9% | 19.6% |
| Ionia | 14.0 | 13.1 | -1.0 | 4,249 | 3,872 | -8.9 | 3,949 | 4,600 | 16.5 | 13.8% | 16.3% |
| Iosco | 17.2 | 17.8 | 0.6 | 1,797 | 1,756 | -2.3 | 2,539 | 3,005 | 18.3 | 19.8% | 23.2% |
| Iron | 12.4 | 12.7 | 0.3 | 721 | 725 | 0.6 | 797 | 938 | 17.6 | 13.9% | 16.6% |
| Isabella | 8.7 | 9.4 | 0.6 | 3,392 | 3,650 | 7.6 | 7,043 | 9,500 | 34.9 | 16.6% | 21.5% |
| Jackson | 13.1 | 13.3 | 0.1 | 10,118 | 9,988 | -1.3 | 11,288 | 13,861 | 22.8 | 15.5% | 18.5% |
| Kalamazoo | 9.8 | 10.8 | 1.0 | 13,090 | 14,297 | 9.2 | 19,601 | 25,588 | 30.5 | 15.4% | 18.7% |
| Kalkaska | 13.6 | 14.3 | 0.7 | 1,167 | 1,215 | 4.1 | 1,405 | 1,658 | 18.0 | 18.7% | 22.5% |
| Kent | 10.7 | 10.9 | 0.2 | 33,906 | 34,082 | 0.5 | 39,241 | 50,222 | 28.0 | 13.8% | 17.0% |
| Keweenaw | 14.4 | 15.1 | 0.8 | 153 | 160 | 4.6 | 114 | 126 | 10.5 | 9.5% | 11.7% |
| Lake | 16.4 | 15.7 | -0.7 | 674 | 657 | -2.6 | 1,408 | 1,582 | 12.4 | 25.7% | 28.4% |
| Lapeer | 16.8 | 15.7 | -1.1 | 7,301 | 6,782 | -7.1 | 4,154 | 5,330 | 28.3 | 10.8% | 13.9% |
| Leelanau | 8.6 | 9.9 | 1.3 | 943 | 1,073 | 13.8 | 534 | 786 | 47.1 | 5.6% | 7.9% |
| Lenawee | 15.8 | 15.0 | -0.8 | 7,655 | 7,013 | -8.4 | 5,877 | 7,224 | 22.9 | 13.1% | 16.0% |
| Livingston | 11.8 | 11.8 | 0.0 | 10,735 | 10,825 | 0.8 | 4,574 | 6,313 | 38.0 | 5.5% | 7.6% |
| Luce | 13.0 | 13.6 | 0.6 | 355 | 372 | 4.9 | 507 | 531 | 4.7 | 15.9% | 16.6% |
| Mackinac | 11.5 | 11.8 | 0.3 | 682 | 681 | -0.2 | 562 | 702 | 25.0 | 10.8% | 13.7% |
| Macomb | 15.9 | 14.4 | -1.5 | 66,464 | 59,405 | -10.6 | 42,375 | 55,758 | 31.6 | 10.9% | 14.4% |

¹In some cases the Michigan number is slightly different from the county total.

²Population figures based on U.S. Census Bureau county estimates from July of the previous year.

Data sources: Unemployment: Bureau of Labor Statistics, Local Area Unemployment Statistics; Public Assistance: Michigan Department of Human Services.


| Family Independence Program (Cash Assistance) | | | | Child Day Care | | | | Medicaid | | | | | | |
|---|---------------|-------------|---|----------------|---|---------------|---------------------------|--------------|--|------------------|------------|--|--------------|--|
| Average Number of Families Receiving Cash Assistance Per Month ³ | | | Percent of Population Receiving Assistance ² | | Average Number of Children Receiving Care Per Month | | Average Payment Per Child | | Average Number of Persons Eligible for Medicaid ONLY (Excludes FIP & SSI Recipients) | | | Percent of Population Eligible for Medicaid (Includes FIP & SSI Recipients) ² | | |
| Qtr 2 2009 | Qtr 2 2010 | % change | Qtr 2 2009 | Qtr 2 2010 | Qtr 2 2009 | Qtr 2 2010 | Qtr 2 2009 | Qtr 2 2010 | Qtr 2 2009 | Qtr 2 2010 | % change | Qtr 2 2009 | Qtr 2 2010 | |
| 74,149 | 81,978 | 10.6 | 2.0% | 2.2% | 78,639 | 61,251 | \$286 | \$284 | 1,296,600 | 1,421,939 | 9.7 | 17.2% | 18.9% | |
| 26 | 28 | 9.1 | 0.6% | 0.6% | 15 | 25 | \$166 | \$151 | 1,392 | 1,523 | 9.5 | 14.9% | 16.7% | |
| 24 | 28 | 18.3 | 0.6% | 0.7% | 20 | 12 | \$153 | \$119 | 1,236 | 1,277 | 3.4 | 15.6% | 16.4% | |
| 428 | 414 | -3.3 | 1.0% | 0.9% | 479 | 412 | \$237 | \$271 | 15,209 | 16,552 | 8.8 | 15.8% | 16.9% | |
| 203 | 221 | 8.7 | 1.7% | 1.9% | 232 | 194 | \$203 | \$205 | 4,868 | 4,762 | -2.2 | 21.4% | 21.7% | |
| 46 | 43 | -5.8 | 0.4% | 0.4% | 114 | 83 | \$226 | \$212 | 3,651 | 3,836 | 5.1 | 17.3% | 18.4% | |
| 88 | 87 | -1.1 | 1.3% | 1.3% | 117 | 90 | \$194 | \$251 | 2,836 | 2,884 | 1.7 | 21.8% | 22.7% | |
| 54 | 53 | -2.5 | 1.4% | 1.4% | 38 | 35 | \$182 | \$228 | 1,245 | 1,302 | 4.5 | 18.1% | 18.7% | |
| 249 | 200 | -19.6 | 1.1% | 0.9% | 244 | 189 | \$232 | \$244 | 7,086 | 7,873 | 11.1 | 14.3% | 15.6% | |
| 636 | 671 | 5.5 | 1.5% | 1.6% | 1,122 | 897 | \$232 | \$228 | 14,686 | 16,124 | 9.8 | 17.5% | 19.2% | |
| 52 | 55 | 5.1 | 0.8% | 0.8% | 74 | 44 | \$220 | \$283 | 2,514 | 2,601 | 3.4 | 16.8% | 17.6% | |
| 1,251 | 1,466 | 17.1 | 2.0% | 2.4% | 1,498 | 1,228 | \$258 | \$270 | 23,602 | 25,222 | 6.9 | 19.7% | 21.1% | |
| 333 | 366 | 10.0 | 2.1% | 2.2% | 299 | 249 | \$236 | \$257 | 7,277 | 7,750 | 6.5 | 19.7% | 21.5% | |
| 1,736 | 1,640 | -5.5 | 3.3% | 3.2% | 1,258 | 1,092 | \$262 | \$267 | 22,275 | 23,604 | 6.0 | 22.9% | 23.9% | |
| 319 | 322 | 0.9 | 1.6% | 1.7% | 398 | 311 | \$251 | \$284 | 8,075 | 8,547 | 5.8 | 19.6% | 20.8% | |
| 43 | 44 | 2.3 | 0.3% | 0.4% | 116 | 66 | \$195 | \$256 | 3,248 | 3,867 | 19.1 | 14.2% | 16.9% | |
| 88 | 106 | 20.0 | 0.7% | 1.0% | 123 | 90 | \$199 | \$245 | 4,726 | 4,916 | 4.0 | 20.8% | 22.3% | |
| 149 | 190 | 27.7 | 1.0% | 1.3% | 194 | 171 | \$225 | \$267 | 4,919 | 5,147 | 4.6 | 15.8% | 16.8% | |
| 250 | 274 | 9.5 | 2.0% | 2.4% | 162 | 116 | \$204 | \$271 | 5,852 | 5,981 | 2.2 | 25.3% | 26.4% | |
| 112 | 118 | 5.4 | 0.4% | 0.4% | 271 | 204 | \$247 | \$280 | 5,877 | 6,270 | 6.7 | 9.7% | 10.3% | |
| 56 | 53 | -4.2 | 0.9% | 0.9% | 71 | 58 | \$208 | \$241 | 2,370 | 2,652 | 11.9 | 19.5% | 21.9% | |
| 126 | 171 | 35.4 | 0.8% | 1.2% | 220 | 180 | \$175 | \$199 | 5,640 | 5,863 | 3.9 | 18.4% | 19.7% | |
| 62 | 55 | -11.3 | 0.5% | 0.4% | 154 | 130 | \$150 | \$181 | 3,827 | 4,083 | 6.7 | 16.6% | 17.7% | |
| 249 | 256 | 2.7 | 0.5% | 0.6% | 596 | 532 | \$281 | \$273 | 11,104 | 12,188 | 9.8 | 12.1% | 13.3% | |
| 51 | 51 | -0.7 | 0.3% | 0.3% | 196 | 116 | \$193 | \$241 | 5,079 | 5,051 | -0.6 | 16.9% | 16.8% | |
| 6,274 | 7,354 | 17.2 | 4.0% | 4.8% | 7,075 | 5,842 | \$323 | \$281 | 65,619 | 69,588 | 6.0 | 22.5% | 24.6% | |
| 161 | 166 | 3.1 | 1.6% | 1.6% | 135 | 87 | \$199 | \$239 | 4,186 | 4,482 | 7.1 | 20.4% | 22.1% | |
| 174 | 190 | 8.8 | 2.9% | 3.4% | 55 | 58 | \$159 | \$198 | 2,279 | 2,402 | 5.4 | 19.5% | 21.0% | |
| 147 | 164 | 11.6 | 0.4% | 0.4% | 484 | 382 | \$218 | \$249 | 11,689 | 12,318 | 5.4 | 15.4% | 16.3% | |
| 192 | 178 | -7.3 | 1.2% | 1.1% | 312 | 227 | \$215 | \$233 | 6,568 | 6,968 | 6.1 | 18.8% | 19.9% | |
| 266 | 288 | 8.3 | 1.6% | 1.8% | 219 | 192 | \$218 | \$234 | 6,899 | 7,406 | 7.3 | 18.9% | 20.5% | |
| 72 | 87 | 20.7 | 0.5% | 0.6% | 109 | 89 | \$208 | \$198 | 5,022 | 5,269 | 4.9 | 16.5% | 17.4% | |
| 99 | 118 | 19.6 | 0.7% | 0.9% | 172 | 140 | \$181 | \$208 | 5,046 | 5,224 | 3.5 | 18.4% | 19.4% | |
| 1,611 | 1,639 | 1.7 | 1.6% | 1.7% | 1,984 | 1,678 | \$314 | \$297 | 35,182 | 37,867 | 7.6 | 16.5% | 17.7% | |
| 264 | 311 | 17.7 | 1.0% | 1.2% | 326 | 306 | \$222 | \$246 | 8,499 | 9,234 | 8.6 | 16.1% | 17.8% | |
| 151 | 177 | 17.0 | 1.4% | 1.6% | 147 | 91 | \$201 | \$205 | 4,609 | 4,779 | 3.7 | 21.8% | 23.0% | |
| 58 | 66 | 14.5 | 1.3% | 1.6% | 28 | 31 | \$136 | \$165 | 1,986 | 2,027 | 2.1 | 20.5% | 21.7% | |
| 171 | 191 | 11.7 | 0.6% | 0.7% | 380 | 296 | \$216 | \$273 | 8,021 | 8,807 | 9.8 | 14.4% | 15.7% | |
| 1,035 | 1,284 | 24.1 | 1.7% | 2.1% | 963 | 885 | \$242 | \$268 | 21,706 | 23,302 | 7.4 | 17.6% | 19.1% | |
| 1,818 | 2,264 | 24.5 | 2.0% | 2.5% | 2,044 | 1,782 | \$277 | \$290 | 30,024 | 31,883 | 6.2 | 16.4% | 17.5% | |
| 64 | 59 | -8.3 | 0.9% | 0.8% | 111 | 75 | \$211 | \$236 | 3,368 | 3,672 | 9.0 | 22.8% | 24.9% | |
| 4,457 | 5,059 | 13.5 | 1.9% | 2.2% | 5,305 | 4,438 | \$288 | \$285 | 80,790 | 89,387 | 10.6 | 17.4% | 19.1% | |
| 1 | 3 | 150.0 | 0.1% | 0.2% | 1 | 1 | \$217 | \$342 | 274 | 274 | 0.2 | 14.0% | 14.0% | |
| 94 | 116 | 23.8 | 2.1% | 2.5% | 73 | 55 | \$201 | \$259 | 2,191 | 2,235 | 2.0 | 27.1% | 28.0% | |
| 265 | 344 | 29.6 | 0.8% | 1.1% | 390 | 355 | \$239 | \$252 | 10,712 | 12,244 | 14.3 | 13.6% | 15.8% | |
| 13 | 19 | 46.2 | 0.1% | 0.2% | 44 | 41 | \$247 | \$272 | 1,423 | 1,894 | 33.1 | 7.1% | 9.4% | |
| 408 | 459 | 12.4 | 1.0% | 1.2% | 682 | 515 | \$254 | \$251 | 13,237 | 14,255 | 7.7 | 15.8% | 17.3% | |
| 220 | 287 | 30.4 | 0.3% | 0.4% | 304 | 263 | \$305 | \$324 | 11,792 | 14,235 | 20.7 | 7.2% | 8.7% | |
| 41 | 43 | 4.8 | 1.9% | 2.0% | 25 | 28 | \$256 | \$202 | 1,086 | 1,062 | -2.2 | 21.8% | 21.8% | |
| 26 | 34 | 29.1 | 0.6% | 0.8% | 26 | 14 | \$205 | \$245 | 1,321 | 1,442 | 9.1 | 14.7% | 16.2% | |
| 3,333 | 4,055 | 21.7 | 1.1% | 1.3% | 4,008 | 3,308 | \$324 | \$302 | 88,769 | 103,682 | 16.8 | 13.2% | 15.5% | |

¹ In some cases the Michigan number is slightly different from the county total.

² Population figures based on U.S. Census Bureau county estimates from July of the previous year.

³ Includes both regular and extended FIP.

Data sources: Unemployment: Bureau of Labor Statistics, Local Area Unemployment Statistics; Public Assistance: Michigan Department of Human Services.

|  Prepared by: Michigan League for Human Services | Unemployment (data not seasonally adjusted) | | | | | | Food Assistance Program | | | | |
|---|--|---------------|---------------|-------------------|---------------|-------------|--|---------------|-------------|--|---------------|
| | Unemployment Rate | | | Number Unemployed | | | Average Number of Households Per Month | | | Percent of Population Receiving Assistance ² | |
| | Qtr 2 2009 | Qtr 2 2010 | +/- points | Qtr 2 2009 | Qtr 2 2010 | % change | Qtr 2 2009 | Qtr 2 2010 | % change | Qtr 2 2009 | Qtr 2 2010 |
| Manistee | 12.4 | 13.2 | 0.8 | 1,455 | 1,524 | 4.7 | 1,834 | 2,150 | 17.2 | 15.0% | 17.8% |
| Marquette | 10.5 | 10.3 | -0.1 | 3,755 | 3,679 | -2.0 | 4,082 | 5,426 | 32.9 | 11.7% | 14.5% |
| Mason | 12.5 | 12.7 | 0.2 | 1,851 | 1,859 | 0.5 | 2,280 | 2,631 | 15.4 | 17.5% | 19.7% |
| Mecosta | 12.8 | 13.4 | 0.6 | 2,510 | 2,572 | 2.5 | 4,696 | 5,478 | 16.7 | 21.1% | 23.7% |
| Menominee | 12.2 | 10.9 | -1.3 | 1,634 | 1,439 | -11.9 | 1,538 | 1,822 | 18.5 | 13.1% | 15.7% |
| Midland | 9.6 | 10.1 | 0.5 | 4,136 | 4,328 | 4.6 | 4,561 | 5,457 | 19.6 | 11.4% | 13.5% |
| Missaukee | 15.3 | 15.1 | -0.2 | 985 | 927 | -5.8 | 943 | 1,185 | 25.7 | 14.9% | 18.4% |
| Monroe | 15.1 | 13.0 | -2.1 | 11,512 | 9,423 | -18.1 | 7,457 | 9,134 | 22.5 | 10.6% | 12.9% |
| Montcalm | 16.6 | 16.3 | -0.3 | 4,473 | 4,281 | -4.3 | 4,798 | 5,687 | 18.5 | 17.6% | 20.5% |
| Montmorency | 20.1 | 20.7 | 0.7 | 806 | 810 | 0.5 | 900 | 1,040 | 15.5 | 17.6% | 20.3% |
| Muskegon | 14.6 | 14.2 | -0.4 | 13,017 | 12,294 | -5.6 | 19,684 | 22,805 | 15.9 | 23.0% | 26.0% |
| Newaygo | 13.6 | 12.7 | -0.9 | 3,061 | 2,795 | -8.7 | 3,865 | 4,635 | 19.9 | 18.7% | 22.0% |
| Oakland | 12.5 | 12.9 | 0.3 | 75,777 | 78,305 | 3.3 | 43,572 | 60,369 | 38.6 | 7.4% | 10.1% |
| Oceana | 15.7 | 15.6 | -0.1 | 2,227 | 2,190 | -1.7 | 2,352 | 2,629 | 11.8 | 20.8% | 22.8% |
| Ogemaw | 12.9 | 13.5 | 0.6 | 1,243 | 1,310 | 5.4 | 2,365 | 2,623 | 10.9 | 22.6% | 25.4% |
| Ontonagon | 16.0 | 18.8 | 2.8 | 518 | 592 | 14.3 | 500 | 566 | 13.3 | 13.0% | 16.1% |
| Osceola | 15.1 | 15.0 | -0.1 | 1,460 | 1,417 | -2.9 | 1,901 | 2,211 | 16.3 | 18.6% | 22.1% |
| Oscoda | 21.0 | 21.3 | 0.2 | 779 | 750 | -3.8 | 910 | 1,033 | 13.6 | 20.3% | 22.9% |
| Otsego | 14.1 | 15.5 | 1.4 | 1,701 | 1,835 | 7.9 | 2,008 | 2,294 | 14.2 | 18.1% | 20.7% |
| Ottawa | 12.2 | 12.0 | -0.2 | 16,103 | 15,449 | -4.1 | 9,219 | 13,172 | 42.9 | 8.3% | 10.8% |
| Presque Isle | 17.7 | 16.9 | -0.8 | 1,098 | 1,026 | -6.6 | 812 | 926 | 14.0 | 11.5% | 13.6% |
| Roscommon | 14.6 | 15.6 | 1.0 | 1,492 | 1,564 | 4.8 | 2,669 | 2,986 | 11.9 | 21.3% | 24.0% |
| Saginaw | 12.7 | 12.5 | -0.2 | 11,923 | 11,817 | -0.9 | 19,134 | 22,898 | 19.7 | 19.6% | 23.1% |
| Saint Clair | 17.5 | 15.5 | -1.9 | 14,491 | 12,630 | -12.8 | 12,380 | 14,290 | 15.4 | 15.4% | 17.8% |
| Saint Joseph | 15.0 | 13.2 | -1.8 | 4,349 | 3,580 | -17.7 | 4,659 | 5,446 | 16.9 | 17.2% | 20.0% |
| Sanilac | 17.5 | 16.4 | -1.1 | 3,714 | 3,313 | -10.8 | 3,518 | 3,982 | 13.2 | 18.3% | 20.9% |
| Schoolcraft | 14.3 | 14.1 | -0.1 | 564 | 561 | -0.6 | 639 | 668 | 4.4 | 16.5% | 16.7% |
| Shiawassee | 14.6 | 13.8 | -0.8 | 5,196 | 4,760 | -8.4 | 4,971 | 5,886 | 18.4 | 15.4% | 18.2% |
| Tuscola | 15.9 | 15.2 | -0.6 | 4,468 | 4,170 | -6.7 | 3,572 | 4,258 | 19.2 | 14.9% | 17.9% |
| Van Buren | 11.8 | 13.0 | 1.2 | 4,707 | 5,121 | 8.8 | 5,991 | 7,210 | 20.3 | 17.3% | 20.4% |
| Washtenaw | 8.8 | 8.9 | 0.1 | 16,109 | 16,228 | 0.7 | 16,091 | 21,025 | 30.7 | 8.6% | 10.9% |
| Wayne | 16.1 | 15.2 | -0.9 | 140,871 | 132,316 | -6.1 | 202,111 | 247,460 | 22.4 | 21.6% | 26.2% |
| Wexford | 16.7 | 16.9 | 0.2 | 2,432 | 2,359 | -3.0 | 3,245 | 3,596 | 10.8 | 22.9% | 24.6% |

FACT

The share of Michigan workers who were long-term unemployed (unemployed over 26 weeks) was 6.5 percent in 2000, but 41 percent in 2009.

¹In some cases the Michigan number is slightly different from the county total.

² Population figures based on U.S. Census Bureau county estimates from July of the previous year.

Data sources: Unemployment: Bureau of Labor Statistics, Local Area Unemployment Statistics; Public Assistance: Michigan Department of Human Services.

| Family Independence Program (Cash Assistance) | | | | Child Day Care | | | | Medicaid | | | | | |
|--|---------------|-------------|--|----------------|---|---------------|---------------------------------|---------------|--|---------------|-------------|---|---------------|
| Average Number of Families Receiving Cash Assistance Per Month ³ | | | Percent of Population Receiving Assistance ² | | Average Number of Children Receiving Care Per Month | | Average Payment Per Child | | Average Number of Persons Eligible for Medicaid ONLY (Excludes FIP & SSI Recipients) | | | Percent of Population Eligible for Medicaid (Includes FIP & SSI Recipients) ² | |
| Qtr 2 2009 | Qtr 2 2010 | % change | Qtr 2 2009 | Qtr 2 2010 | Qtr 2 2009 | Qtr 2 2010 | Qtr 2 2009 | Qtr 2 2010 | Qtr 2 2009 | Qtr 2 2010 | % change | Qtr 2 2009 | Qtr 2 2010 |
| 154 | 175 | 13.7 | 1.6% | 1.9% | 90 | 73 | \$173 | \$205 | 3,324 | 3,546 | 6.7 | 17.5% | 19.0% |
| 192 | 199 | 3.7 | 0.6% | 0.7% | 284 | 249 | \$186 | \$197 | 7,641 | 8,237 | 7.8 | 13.9% | 15.0% |
| 143 | 171 | 20.1 | 1.2% | 1.5% | 295 | 279 | \$212 | \$234 | 4,912 | 5,102 | 3.9 | 20.7% | 21.8% |
| 181 | 174 | -4.2 | 1.1% | 1.0% | 218 | 160 | \$194 | \$229 | 6,917 | 7,010 | 1.4 | 20.2% | 20.3% |
| 65 | 77 | 17.3 | 0.7% | 0.8% | 119 | 97 | \$163 | \$199 | 3,381 | 3,650 | 8.0 | 16.2% | 17.8% |
| 271 | 279 | 2.7 | 0.8% | 0.8% | 421 | 343 | \$232 | \$250 | 9,672 | 10,321 | 6.7 | 14.2% | 15.1% |
| 50 | 63 | 24.5 | 0.8% | 1.0% | 103 | 71 | \$204 | \$234 | 2,246 | 2,633 | 17.3 | 17.0% | 20.4% |
| 686 | 818 | 19.3 | 1.2% | 1.4% | 641 | 550 | \$289 | \$255 | 15,392 | 17,074 | 10.9 | 12.6% | 14.1% |
| 232 | 193 | -17.0 | 1.0% | 0.7% | 314 | 198 | \$219 | \$257 | 10,421 | 11,384 | 9.2 | 20.0% | 21.5% |
| 38 | 45 | 18.4 | 1.0% | 1.2% | 39 | 34 | \$187 | \$189 | 1,795 | 1,787 | -0.4 | 21.3% | 22.1% |
| 3,041 | 3,359 | 10.5 | 4.8% | 5.3% | 2,342 | 2,051 | \$238 | \$256 | 27,516 | 29,531 | 7.3 | 23.7% | 25.5% |
| 282 | 316 | 12.2 | 1.4% | 1.6% | 235 | 232 | \$230 | \$279 | 8,723 | 9,476 | 8.6 | 21.7% | 23.8% |
| 3,594 | 4,491 | 25.0 | 0.8% | 1.0% | 4,024 | 3,194 | \$343 | \$318 | 90,268 | 108,860 | 20.6 | 9.6% | 11.5% |
| 282 | 311 | 10.2 | 3.0% | 3.3% | 172 | 163 | \$232 | \$237 | 5,901 | 5,956 | 0.9 | 26.4% | 27.2% |
| 129 | 184 | 42.6 | 1.6% | 2.2% | 225 | 159 | \$206 | \$234 | 4,274 | 4,333 | 1.4 | 25.0% | 26.2% |
| 22 | 26 | 17.9 | 1.0% | 1.3% | 16 | 18 | \$183 | \$175 | 984 | 1,002 | 1.8 | 18.0% | 18.8% |
| 101 | 113 | 12.3 | 1.2% | 1.3% | 104 | 134 | \$213 | \$258 | 3,867 | 4,280 | 10.7 | 20.9% | 23.4% |
| 43 | 38 | -11.5 | 1.2% | 1.0% | 37 | 32 | \$165 | \$176 | 1,658 | 1,698 | 2.4 | 22.7% | 23.5% |
| 103 | 129 | 25.6 | 1.1% | 1.4% | 262 | 229 | \$239 | \$240 | 4,546 | 4,696 | 3.3 | 21.9% | 23.3% |
| 533 | 524 | -1.7 | 0.5% | 0.5% | 910 | 810 | \$257 | \$275 | 25,008 | 28,154 | 12.6 | 10.9% | 12.2% |
| 35 | 40 | 14.3 | 0.6% | 0.6% | 34 | 26 | \$193 | \$218 | 1,671 | 1,793 | 7.3 | 14.8% | 16.2% |
| 157 | 174 | 11.1 | 1.4% | 1.7% | 167 | 135 | \$209 | \$188 | 4,477 | 4,537 | 1.3 | 22.2% | 23.2% |
| 2,576 | 2,530 | -1.8 | 3.5% | 3.4% | 3,229 | 2,608 | \$260 | \$264 | 29,169 | 32,248 | 10.6 | 21.7% | 23.4% |
| 877 | 1,053 | 20.1 | 1.4% | 1.7% | 979 | 756 | \$256 | \$245 | 23,963 | 25,902 | 8.1 | 17.1% | 18.8% |
| 422 | 404 | -4.3 | 1.7% | 1.7% | 353 | 371 | \$267 | \$277 | 11,639 | 12,549 | 7.8 | 22.3% | 24.0% |
| 180 | 219 | 21.6 | 1.1% | 1.4% | 262 | 228 | \$226 | \$245 | 7,776 | 8,086 | 4.0 | 21.1% | 22.7% |
| 48 | 40 | -16.7 | 1.6% | 1.3% | 35 | 31 | \$125 | \$161 | 1,317 | 1,311 | -0.5 | 20.8% | 20.4% |
| 377 | 442 | 17.1 | 1.4% | 1.6% | 460 | 361 | \$221 | \$240 | 10,448 | 11,179 | 7.0 | 18.1% | 19.7% |
| 250 | 303 | 21.3 | 1.1% | 1.4% | 290 | 253 | \$216 | \$237 | 8,892 | 9,617 | 8.1 | 18.8% | 20.8% |
| 499 | 494 | -0.9 | 1.6% | 1.5% | 428 | 358 | \$249 | \$249 | 13,791 | 15,258 | 10.6 | 21.7% | 23.6% |
| 1,124 | 1,232 | 9.6 | 0.8% | 0.9% | 1,744 | 1,376 | \$331 | \$304 | 26,817 | 29,693 | 10.7 | 9.8% | 10.8% |
| 29,172 | 31,243 | 7.1 | 4.2% | 4.6% | 26,038 | 17,733 | \$306 | \$309 | 309,881 | 337,768 | 9.0 | 23.8% | 26.0% |
| 193 | 209 | 8.1 | 1.5% | 1.5% | 333 | 225 | \$220 | \$256 | 6,815 | 6,602 | -3.1 | 26.0% | 25.7% |

FACT

The percentage of part-time workers who were not working full-time because of economic reasons was 9 percent in 2000, but 25 percent in 2009.

¹ In some cases the Michigan number is slightly different from the county total.

² Population figures based on U.S. Census Bureau county estimates from July of the previous year.

³ Includes both regular and extended FIP.

Data sources: Unemployment: Bureau of Labor Statistics, Local Area Unemployment Statistics; Public Assistance: Michigan Department of Human Services.

Employment Trends by Selected Industries in Michigan
(data not seasonally adjusted, rounded to the nearest hundred)

| Industry | Avg 2009 Qtr 2 | Avg 2010 Qtr 2 | % Change | Industry | Avg 2009 Qtr 2 | Avg 2010 Qtr 2 | % Change |
|---|-------------------|-------------------|-------------|---|-------------------|-------------------|-------------|
| TOTAL NONFARM | 3,897,800 | 3,878,000 | -0.5 | Wholesale Electronic Markets and Agents and Brokers | 23,000 | 23,000 | 0.0 |
| TOTAL PRIVATE | 3,242,400 | 3,230,300 | -0.4 | •Retail Trade | 451,900 | 448,100 | -0.8 |
| GOODS PRODUCING | 593,800 | 590,600 | -0.5 | Motor Vehicle and Parts Dealers | 51,600 | 49,000 | -5.0 |
| SERVICE-PROVIDING | 3,304,000 | 3,287,400 | -0.5 | Building Material and Garden Equip. and Supplies Dealers | 41,100 | 41,600 | 1.2 |
| Natural Resources and Mining | 6,800 | 7,200 | 5.9 | Food and Beverage Stores | 77,100 | 76,300 | -1.0 |
| Construction | 130,700 | 120,300 | -8.0 | Health and Personal Care | 32,000 | 30,600 | -4.4 |
| Construction of Buildings | 28,300 | 25,300 | -10.6 | Gasoline Stations | 23,200 | 22,400 | -3.4 |
| Heavy and Civil Engineering | 16,200 | 15,600 | -3.7 | Clothing and Clothing Accessories | 35,500 | 37,100 | 4.5 |
| Specialty Trade Contractors | 86,200 | 79,500 | -7.8 | Sporting Goods, Hobby, Book, and Music Stores | 20,300 | 19,300 | -4.9 |
| Manufacturing | 456,300 | 463,000 | 1.5 | General Merchandise Stores | 109,200 | 106,800 | -2.2 |
| •Durable Goods | 358,100 | 333,900 | -6.8 | Miscellaneous Store Retail | 23,100 | 22,600 | -2.2 |
| Nonmetallic Mineral Products | 11,300 | 11,000 | -2.7 | •Transportation & Warehousing & Utilities | 112,300 | 108,300 | -3.6 |
| Primary Metal Manufacturing | 16,000 | 16,000 | 0.0 | Air Transportation | 12,800 | 12,100 | -5.5 |
| Fabricated Metal Product | 58,100 | 60,500 | 4.1 | Rail Transportation | 4,300 | 4,400 | 2.3 |
| Machinery Manufacturing | 27,100 | 26,400 | -2.6 | Truck Transportation | 33,400 | 33,300 | -0.3 |
| Computer and Electronic Products | 18,200 | 16,900 | -7.1 | Warehousing and Storage | 11,800 | 11,400 | -3.4 |
| Motor Vehicle Manufacturing | 34,300 | 39,200 | 14.3 | Information | 56,700 | 52,100 | -8.1 |
| Motor Vehicle Parts Manufacturing | 78,400 | 87,100 | 11.1 | Publishing Industries | 17,400 | 15,400 | -11.5 |
| Furniture and Related Products | 20,000 | 18,200 | -9.0 | Telecommunications | 22,300 | 19,600 | -12.1 |
| •Non-Durable Goods | 120,800 | 120,200 | -0.5 | Financial Activities | 192,900 | 183,400 | -4.9 |
| Food Manufacturing | 32,700 | 33,100 | 1.2 | Finance and Insurance | 143,200 | 136,600 | -4.6 |
| Printing and Related Support Activities | 14,800 | 13,800 | -6.8 | Real Estate | 34,700 | 32,700 | -5.8 |
| Chemical Manufacturing | 25,700 | 24,400 | -5.1 | Professional & Business Services | 506,300 | 524,600 | 3.6 |
| Plastics and Rubber Products | 25,900 | 26,300 | 1.5 | Legal Services | 27,800 | 27,000 | -2.9 |
| Trade Transportation & Utilities | 718,700 | 707,900 | -1.5 | Accounting, Tax Preparation, Bookkeeping & Payroll Services | 29,200 | 28,000 | -4.1 |
| •Wholesale Trade | 154,500 | 151,500 | -1.9 | Architectural Engineering | 54,200 | 55,400 | 2.2 |
| Merchant Wholesalers Durable Goods | 84,300 | 82,300 | -2.4 | | | | |
| Merchant Wholesalers Nondurable Goods | 47,300 | 46,300 | -2.1 | | | | |

Note: Industry details and subtotals may not sum to totals due to rounding.

Source: Department of Labor and Economic Growth/Office of Labor Market Information, Current Employment Statistics Section - (800) 225-3732

Employment Trends by Selected Industries in Michigan
(data not seasonally adjusted, rounded to the nearest hundred)

| Industry | Avg 2009 Qtr 2 | Avg 2010 Qtr 2 | % Change | Industry | Avg 2009 Qtr 2 | Avg 2010 Qtr 2 | % Change |
|--|-------------------|-------------------|-------------|---|-------------------|-------------------|-------------|
| Computer Systems Design | 36,800 | 36,200 | -1.6 | Government | 655,400 | 647,700 | -1.2 |
| Management, Scientific and Technical Consulting Services | 19,300 | 18,500 | -4.1 | • Federal Government | 55,700 | 62,200 | 11.7 |
| Scientific Research and Development Services | 18,200 | 17,400 | -4.4 | U.S. Postal Service | 24,900 | 23,000 | -7.6 |
| Advertising and Related | 13,200 | 12,500 | -5.3 | • State Government | 173,700 | 172,500 | -0.7 |
| Management of Companies | 51,400 | 50,000 | -2.7 | State Government Educational Services | 101,600 | 102,600 | 1.0 |
| Administrative & Support Services | 234,900 | 256,900 | 9.4 | State Government Hospital Services | 16,700 | 17,000 | 1.8 |
| Employment Services | 119,800 | 143,300 | 19.6 | • Local Government | 426,000 | 413,000 | -3.1 |
| Educational and Health Services | 612,200 | 624,600 | 2.0 | Local Government Educational Services | 242,200 | 234,500 | -3.2 |
| • Educational Services (see also Government) | 82,200 | 90,200 | 9.7 | Local Government Hospitals | 13,300 | 13,500 | 1.5 |
| • Health Care & Social Assistance | 529,900 | 534,500 | 0.9 | Local Government Elementary and Secondary Schools | 218,100 | 208,700 | -4.3 |
| Ambulatory Health Care Services | 180,700 | 182,900 | 1.2 | Local Government Junior Colleges | 23,300 | 25,300 | 8.6 |
| Offices of Physicians | 68,900 | 70,200 | 1.9 | | | | |
| Outpatient Care Centers | 16,300 | 16,100 | -1.2 | | | | |
| Home Health Care Service | 31,800 | 33,600 | 5.7 | | | | |
| Hospitals | 190,500 | 190,100 | -0.2 | | | | |
| Nursing and Residential Care | 98,300 | 97,500 | -0.8 | | | | |
| —Nursing Care Facilities | 60,500 | 64,000 | 5.8 | | | | |
| Social Assistance | 27,700 | 27,800 | 0.4 | | | | |
| —Individual and Family Services | 27,600 | 27,700 | 0.4 | | | | |
| Leisure and Hospitality | 391,200 | 380,300 | -2.8 | | | | |
| Performing Arts Spectator Activities | 10,000 | 8,700 | -13.0 | | | | |
| Amusement, Gambling & Recreation | 49,900 | 46,300 | -7.2 | | | | |
| Accommodation | 32,000 | 31,900 | -0.3 | | | | |
| Food Services and Drinking | 295,000 | 290,300 | -1.6 | | | | |
| Other Services | 170,600 | 166,700 | -2.3 | | | | |
| Repair and Maintenance | 35,200 | 34,100 | -3.1 | | | | |
| Personal and Laundry Services | 37,700 | 36,100 | -4.2 | | | | |
| Religious Grantmaking Civic Professional | 97,700 | 96,500 | -1.2 | | | | |

VISIT OUR WEBSITE FOR MORE INFORMATION!

The "Work and Wages" section of the Michigan League for Human Services website has information on Adult Learning, Low-Wage Jobs, and Unemployment. It also includes back issues of the Economic Security Bulletin. Go to www.MiLHS.org and click the "Our Work" tab at the left, then "Work and Wages"

Note: Industry details and subtotals may not sum to totals due to rounding.

Source: Department of Labor and Economic Growth/Office of Labor Market Information, Current Employment Statistics Section - (800) 225-3732



Michigan League for Human Services

1223 Turner Street, Suite G-1
 Lansing, MI 48906
 (517) 487-5436 — Fax (517) 371-4546
 Web site: www.milhs.org

A United Way Agency

Percentage Change in Michigan Counties With Largest Increases
 Second Quarter 2009 — Second Quarter 2010

| Percentage Point Change in Unemployment Rate | | Percent Change in Food Assistance Households | | Percent Change in FIP Cash Assistance Families | |
|--|------------|--|-------------|--|-------------|
| Ontonagon | 2.8 | Leelanau | 47.1 | Leelanau | 46.2 |
| Benzie | 2.3 | Ottawa | 42.9 | Ogemaw | 42.6 |
| Emmet | 1.6 | Oakland | 38.6 | Delta | 35.4 |
| Antrim | 1.4 | Livingston | 38.0 | Livingston | 30.4 |
| Otsego | 1.4 | Isabella | 34.9 | Lapeer | 29.6 |
| Chippewa | 1.3 | Houghton | 33.1 | Mackinac | 29.1 |
| Leelanau | 1.3 | Marquette | 32.9 | Chippewa | 27.7 |
| Van Buren | 1.2 | Macomb | 31.6 | Otsego | 25.6 |
| Gogebic | 1.1 | Charlevoix | 30.9 | Oakland | 25.0 |
| Kalamazoo | 1.0 | Washtenaw | 30.7 | Kalamazoo | 24.5 |

Note: Counties in bold have population of 100,000 or more.

Sources: Unemployment: Bureau of Labor Statistics, Local Area Unemployment Statistics; Public Assistance: Michigan Department of Human Services