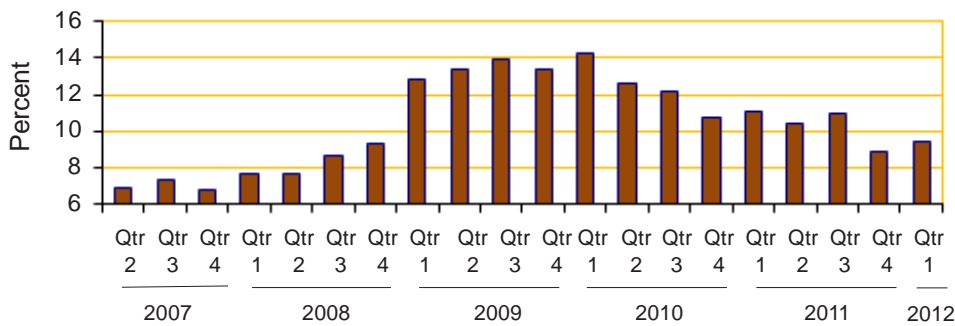


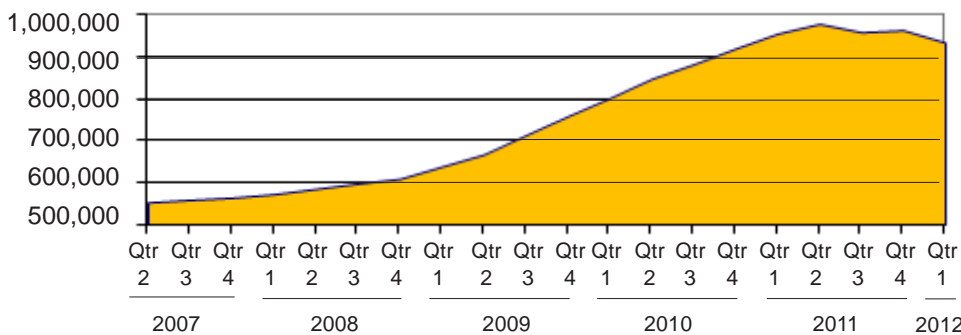


Michigan's Unemployment Rate Over the Past Five Years (not seasonally adjusted)



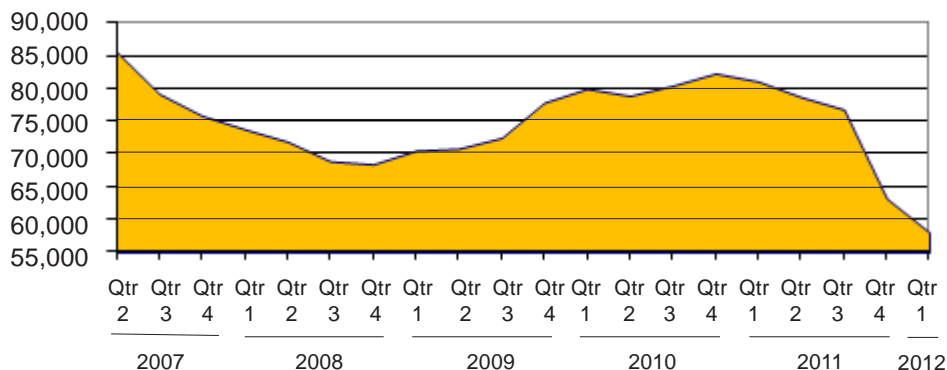
Source: Bureau of Labor Statistics

Food Assistance Households During the Past Five Years



Source: Michigan Department of Human Services

Family Independence Program Cases During the Past Five Years (Regular FIP only)



Source: Michigan Department of Human Services

Cash Assistance Continues to Drop at Greater Rate than Unemployment


By **Peter Ruark**
Senior Policy Analyst

Unemployment

Unemployment went down in each county between Quarter 1 of 2011 and 2012, with 35 counties having a decrease of 2 or more percentage points. Several industries had significant job increases during that time, with the number of jobs in metalworking machinery manufacturing and accounting/tax preparation/bookkeeping/payroll services increasing by more than 10 percent.

Public Assistance

Nearly all counties had a decrease in both FIP and Food Assistance cases. Isabella County decreased its Food Assistance caseload by more than half since the previous year, while Monroe and St. Clair counties had the largest FIP decreases of the higher-population counties. Overall, Michigan decreased its Food Assistance cases by almost 56,000 and its FIP cases by 25,000 between Quarter 1 of 2011 and 2012. Statewide, the decrease in FIP cases far exceeded the decrease in unemployed workers during the year (29.5% to 17.8%), so it is apparent that policy changes rather than the uptick in employment drove the decrease in cash assistance.

|  Prepared by: Michigan League for Human Services | Unemployment (data not seasonally adjusted) | | | | | | Food Assistance Program | | | | |
|---|--|---------------|---------------|-------------------|----------------|---------------|--|----------------|---------------|--|---------------|
| | Unemployment Rate | | | Number Unemployed | | | Average Number of Households Per Month | | | Percent of Population Receiving Assistance ¹ | |
| | County | Qtr 1 2011 | Qtr 1 2012 | +/- points | Qtr 1 2011 | Qtr 1 2012 | % change | Qtr 1 2011 | Qtr 1 2012 | % change | Qtr 1 2011 |
| Michigan² | 11.4 | 9.4 | -2.0 | 527,667 | 433,667 | -17.8 | 982,152 | 926,284 | -5.7 | 19.2% | 18.6% |
| Alcona | 17.2 | 14.0 | -3.2 | 643 | 509 | -20.8 | 907 | 827 | -8.8 | 16.5% | 14.6% |
| Alger | 13.8 | 12.7 | -1.1 | 529 | 477 | -9.8 | 639 | 591 | -7.5 | 13.5% | 12.2% |
| Allegan | 10.5 | 8.2 | -2.3 | 5,425 | 4,306 | -20.6 | 7,336 | 6,858 | -6.5 | 14.7% | 13.8% |
| Alpena | 12.4 | 10.8 | -1.6 | 1,696 | 1,431 | -15.6 | 3,513 | 3,281 | -6.6 | 22.4% | 20.8% |
| Antrim | 14.7 | 12.6 | -2.1 | 1,481 | 1,213 | -18.1 | 1,744 | 1,690 | -3.1 | 16.1% | 15.5% |
| Arenac | 16.4 | 14.2 | -2.1 | 1,138 | 965 | -15.1 | 1,759 | 1,748 | -0.6 | 21.9% | 22.4% |
| Baraga | 21.8 | 18.6 | -3.3 | 861 | 694 | -19.4 | 740 | 704 | -4.8 | 16.2% | 15.9% |
| Barry | 8.7 | 6.8 | -1.9 | 2,460 | 1,942 | -21.0 | 3,968 | 3,588 | -9.6 | 14.7% | 13.3% |
| Bay | 11.1 | 9.3 | -1.9 | 5,720 | 4,827 | -15.6 | 10,682 | 10,066 | -5.8 | 19.1% | 18.3% |
| Benzie | 15.3 | 13.3 | -2.1 | 1,266 | 1,077 | -14.9 | 1,301 | 1,274 | -2.1 | 15.2% | 15.4% |
| Berrien | 11.6 | 9.8 | -1.8 | 8,362 | 6,981 | -16.5 | 16,210 | 15,698 | -3.2 | 20.1% | 20.1% |
| Branch | 11.0 | 9.1 | -1.9 | 2,190 | 1,750 | -20.1 | 3,955 | 3,782 | -4.4 | 19.3% | 18.0% |
| Calhoun | 9.7 | 7.7 | -2.0 | 6,297 | 4,938 | -21.6 | 17,433 | 16,314 | -6.4 | 24.7% | 23.1% |
| Cass | 10.2 | 8.0 | -2.2 | 2,588 | 2,042 | -21.1 | 4,746 | 4,361 | -8.1 | 20.7% | 18.2% |
| Charlevoix | 14.8 | 13.2 | -1.6 | 1,824 | 1,609 | -11.8 | 1,764 | 1,682 | -4.7 | 14.9% | 13.9% |
| Cheboygan | 18.0 | 16.6 | -1.4 | 1,792 | 1,607 | -10.3 | 2,546 | 2,535 | -0.4 | 19.7% | 20.2% |
| Chippewa | 13.5 | 12.2 | -1.3 | 2,213 | 1,959 | -11.5 | 3,175 | 2,798 | -11.9 | 16.2% | 14.8% |
| Clare | 14.8 | 13.0 | -1.9 | 1,825 | 1,561 | -14.4 | 4,282 | 4,155 | -3.0 | 28.1% | 26.8% |
| Clinton | 7.7 | 6.4 | -1.3 | 2,911 | 2,431 | -16.5 | 3,728 | 2,989 | -19.8 | 10.3% | 8.4% |
| Crawford | 12.8 | 11.6 | -1.2 | 745 | 666 | -10.6 | 1,465 | 1,436 | -2.0 | 20.3% | 20.4% |
| Delta | 12.0 | 10.3 | -1.7 | 2,198 | 1,888 | -14.1 | 3,516 | 3,249 | -7.6 | 17.9% | 16.6% |
| Dickinson | 10.2 | 8.3 | -1.9 | 1,379 | 1,108 | -19.7 | 1,947 | 1,892 | -2.8 | 13.9% | 14.1% |
| Eaton | 8.1 | 6.8 | -1.3 | 4,460 | 3,754 | -15.8 | 7,089 | 6,544 | -7.7 | 13.4% | 12.5% |
| Emmet | 16.3 | 14.7 | -1.5 | 2,946 | 2,604 | -11.6 | 2,515 | 2,286 | -9.1 | 14.6% | 14.2% |
| Genesee | 12.2 | 9.8 | -2.4 | 22,512 | 18,158 | -19.3 | 57,281 | 54,988 | -4.0 | 26.6% | 25.4% |
| Gladwin | 15.8 | 14.3 | -1.5 | 1,514 | 1,350 | -10.9 | 2,753 | 2,585 | -6.1 | 21.5% | 19.5% |
| Gogebic | 11.6 | 10.6 | -1.0 | 841 | 758 | -9.9 | 1,812 | 1,715 | -5.4 | 20.3% | 19.1% |
| Gr. Traverse | 11.8 | 9.7 | -2.1 | 5,248 | 4,247 | -19.1 | 6,993 | 6,191 | -11.5 | 15.2% | 13.4% |
| Gratiot | 11.5 | 10.1 | -1.5 | 2,166 | 1,877 | -13.4 | 3,552 | 3,373 | -5.0 | 18.4% | 17.3% |
| Hillsdale | 12.5 | 10.0 | -2.5 | 2,391 | 1,877 | -21.5 | 3,861 | 3,734 | -3.3 | 19.0% | 17.6% |
| Houghton | 10.3 | 9.4 | -0.9 | 1,762 | 1,587 | -9.9 | 3,379 | 2,607 | -22.8 | 16.4% | 13.7% |
| Huron | 12.2 | 9.9 | -2.3 | 1,874 | 1,513 | -19.3 | 2,422 | 2,331 | -3.8 | 15.6% | 14.4% |
| Ingham | 9.3 | 7.7 | -1.7 | 13,385 | 11,006 | -17.8 | 34,850 | 27,912 | -19.9 | 21.3% | 18.7% |
| Ionia | 11.3 | 9.5 | -1.8 | 3,219 | 2,744 | -14.8 | 5,040 | 4,932 | -2.1 | 17.2% | 16.4% |
| Iosco | 15.8 | 13.7 | -2.1 | 1,536 | 1,313 | -14.5 | 3,181 | 3,265 | 2.6 | 23.8% | 24.8% |
| Iron | 11.2 | 10.0 | -1.2 | 608 | 536 | -11.8 | 994 | 990 | -0.4 | 17.5% | 16.1% |
| Isabella | 8.2 | 6.8 | -1.4 | 2,982 | 2,449 | -17.9 | 11,165 | 5,437 | -51.3 | 23.9% | 14.3% |
| Jackson | 11.1 | 8.8 | -2.3 | 7,879 | 6,315 | -19.9 | 15,411 | 14,867 | -3.5 | 19.6% | 19.1% |
| Kalamazoo | 8.7 | 7.1 | -1.6 | 10,883 | 8,810 | -19.1 | 28,922 | 23,267 | -19.6 | 20.1% | 17.5% |
| Kalkaska | 13.5 | 10.9 | -2.6 | 1,053 | 830 | -21.2 | 1,822 | 1,792 | -1.6 | 23.7% | 22.1% |
| Kent | 8.8 | 7.0 | -1.8 | 26,441 | 21,152 | -20.0 | 56,604 | 52,601 | -7.1 | 18.2% | 17.3% |
| Keweenaw | 15.5 | 14.0 | -1.4 | 156 | 140 | -10.5 | 155 | 142 | -8.6 | 12.8% | 12.6% |
| Lake | 15.2 | 13.3 | -1.9 | 589 | 499 | -15.3 | 1,723 | 1,719 | -0.2 | 30.1% | 28.4% |
| Lapeer | 16.2 | 12.9 | -3.3 | 6,683 | 5,236 | -21.6 | 5,881 | 5,475 | -6.9 | 14.5% | 14.1% |
| Leelanau | 11.2 | 9.6 | -1.6 | 1,135 | 961 | -15.4 | 881 | 753 | -14.6 | 8.4% | 7.3% |

¹ Population figures based on U.S. Census Bureau county estimates from July of the previous year.

² In some cases the Michigan number is slightly different from the county total.


Data sources: Unemployment: Bureau of Labor Statistics, Local Area Unemployment Statistics; Public Assistance: Michigan Department of Human Services.

| County | Unemployment (data not seasonally adjusted) | | | | | | Food Assistance Program | | | | |
|--------------|--|------------|------------|-------------------|------------|----------|--|------------|----------|---|------------|
| | Unemployment Rate | | | Number Unemployed | | | Average Number of Households Per Month | | | Percent of Population Receiving Assistance ¹ | |
| | Qtr 1 2011 | Qtr 1 2012 | +/- points | Qtr 1 2011 | Qtr 1 2012 | % change | Qtr 1 2011 | Qtr 1 2012 | % change | Qtr 1 2011 | Qtr 1 2012 |
| Lenawee | 12.4 | 9.7 | -2.7 | 5,593 | 4,224 | -24.5 | 8,093 | 7,711 | -4.7 | 17.1% | 16.3% |
| Livingston | 10.7 | 8.6 | -2.1 | 9,351 | 7,523 | -19.5 | 7,104 | 6,609 | -7.0 | 8.0% | 7.5% |
| Luce | 13.4 | 12.0 | -1.5 | 334 | 286 | -14.4 | 554 | 534 | -3.6 | 16.7% | 16.5% |
| Mackinac | 25.1 | 22.7 | -2.4 | 1,217 | 1,053 | -13.5 | 799 | 803 | 0.5 | 14.2% | 14.3% |
| Macomb | 12.3 | 10.1 | -2.2 | 48,970 | 40,186 | -17.9 | 63,107 | 62,316 | -1.3 | 15.5% | 15.2% |
| Manistee | 13.3 | 11.9 | -1.4 | 1,411 | 1,239 | -12.2 | 2,235 | 2,164 | -3.2 | 18.3% | 17.4% |
| Marquette | 9.7 | 8.3 | -1.3 | 3,331 | 2,886 | -13.4 | 6,253 | 4,743 | -24.2 | 15.8% | 12.9% |
| Mason | 13.1 | 11.5 | -1.7 | 1,792 | 1,528 | -14.7 | 2,833 | 2,812 | -0.7 | 20.1% | 20.1% |
| Mecosta | 11.7 | 10.3 | -1.4 | 2,338 | 2,022 | -13.5 | 6,173 | 4,010 | -35.0 | 24.9% | 18.5% |
| Menominee | 9.4 | 7.7 | -1.7 | 1,129 | 923 | -18.3 | 1,872 | 1,733 | -7.4 | 15.5% | 13.7% |
| Midland | 8.6 | 7.6 | -0.9 | 3,529 | 3,181 | -9.9 | 6,099 | 5,683 | -6.8 | 14.2% | 13.6% |
| Missaukee | 15.1 | 13.2 | -1.9 | 882 | 755 | -14.4 | 1,258 | 1,214 | -3.5 | 18.5% | 18.2% |
| Monroe | 11.1 | 8.7 | -2.4 | 7,694 | 5,852 | -23.9 | 10,004 | 9,893 | -1.1 | 13.6% | 13.5% |
| Montcalm | 13.8 | 11.8 | -2.0 | 3,499 | 2,961 | -15.4 | 6,181 | 5,854 | -5.3 | 21.4% | 19.8% |
| Montmorency | 20.9 | 18.8 | -2.1 | 741 | 648 | -12.6 | 1,130 | 1,049 | -7.2 | 21.6% | 20.7% |
| Muskegon | 11.4 | 9.4 | -2.0 | 9,262 | 7,680 | -17.1 | 24,516 | 23,123 | -5.7 | 26.9% | 26.1% |
| Newaygo | 12.6 | 10.1 | -2.5 | 2,705 | 2,156 | -20.3 | 5,191 | 5,039 | -2.9 | 23.1% | 22.6% |
| Oakland | 10.7 | 8.5 | -2.2 | 62,115 | 49,639 | -20.1 | 70,343 | 69,455 | -1.3 | 11.1% | 11.1% |
| Oceana | 16.7 | 14.3 | -2.4 | 2,125 | 1,794 | -15.6 | 2,777 | 2,666 | -4.0 | 23.1% | 23.1% |
| Ogemaw | 13.6 | 11.9 | -1.7 | 1,224 | 1,050 | -14.2 | 2,837 | 2,857 | 0.7 | 26.0% | 26.0% |
| Ontonagon | 18.7 | 14.8 | -3.9 | 532 | 386 | -27.4 | 598 | 605 | 1.2 | 16.2% | 16.1% |
| Osceola | 13.6 | 11.3 | -2.2 | 1,233 | 997 | -19.1 | 2,386 | 2,240 | -6.1 | 22.7% | 21.0% |
| Oscoda | 19.6 | 17.2 | -2.5 | 681 | 573 | -15.9 | 1,102 | 1,053 | -4.4 | 23.7% | 22.9% |
| Otsego | 14.3 | 12.4 | -2.0 | 1,544 | 1,304 | -15.5 | 2,581 | 2,444 | -5.3 | 21.7% | 20.5% |
| Ottawa | 9.5 | 7.2 | -2.3 | 12,007 | 9,465 | -21.2 | 14,699 | 11,242 | -23.5 | 11.3% | 9.3% |
| Presque Isle | 21.5 | 19.8 | -1.7 | 1,163 | 1,016 | -12.6 | 1,064 | 1,006 | -5.4 | 14.1% | 14.9% |
| Roscommon | 14.7 | 13.0 | -1.7 | 1,386 | 1,204 | -13.1 | 3,133 | 3,085 | -1.5 | 24.8% | 24.1% |
| Saginaw | 10.8 | 9.2 | -1.5 | 9,677 | 8,264 | -14.6 | 25,234 | 23,625 | -6.4 | 24.2% | 23.2% |
| St. Clair | 15.3 | 12.7 | -2.6 | 11,737 | 9,690 | -17.4 | 15,388 | 14,697 | -4.5 | 18.4% | 18.2% |
| St. Joseph | 11.2 | 9.3 | -1.9 | 3,057 | 2,524 | -17.5 | 6,090 | 5,806 | -4.7 | 21.4% | 20.8% |
| Sanilac | 14.0 | 11.6 | -2.4 | 2,700 | 2,182 | -19.2 | 4,156 | 3,791 | -8.8 | 21.4% | 19.1% |
| Schoolcraft | 15.7 | 14.5 | -1.2 | 596 | 549 | -8.0 | 746 | 726 | -2.7 | 17.6% | 17.1% |
| Shiawassee | 12.0 | 10.3 | -1.7 | 3,968 | 3,380 | -14.8 | 6,331 | 5,873 | -7.2 | 18.9% | 17.8% |
| Tuscola | 13.1 | 11.0 | -2.2 | 3,407 | 2,796 | -18.0 | 4,689 | 4,518 | -3.6 | 18.7% | 17.9% |
| Van Buren | 13.3 | 11.1 | -2.2 | 4,898 | 4,036 | -17.6 | 7,795 | 7,494 | -3.9 | 21.6% | 21.2% |
| Washtenaw | 6.8 | 5.5 | -1.3 | 12,169 | 10,028 | -17.6 | 24,515 | 20,487 | -16.4 | 11.9% | 10.6% |
| Wayne | 13.2 | 11.1 | -2.0 | 108,159 | 90,104 | -16.7 | 272,339 | 272,315 | 0.0 | 27.7% | 29.3% |
| Wexford | 14.6 | 12.4 | -2.2 | 1,967 | 1,638 | -16.7 | 3,936 | 3,732 | -5.2 | 26.0% | 23.6% |

¹ Population figures based on U.S. Census Bureau county estimates from July of the previous year.

² In some cases the Michigan number is slightly different from the county total.

Data sources: Unemployment: Bureau of Labor Statistics, Local Area Unemployment Statistics; Public Assistance: Michigan Department of Human Services.


|  Prepared by: Michigan League for Human Services | Family Independence Program (Cash Assistance) | | | | | Child Day Care | | Medicaid | | | | |
|---|--|---------------|--------------|--|---------------|---|---------------|--|------------------|-------------|---|---------------|
| | Average Number of Families Receiving Cash Assistance Per Month ¹ | | | Percent of Population Receiving Assistance ² | | Average Number of Children Receiving Care Per Month | | Average Number of Persons Eligible for Medicaid ONLY (Excludes FIP & SSI Recipients) | | | Percent of Population Eligible for Medicaid (Includes FIP & SSI Recipients) ² | |
| | Qtr 1 2011 | Qtr 1 2012 | % change | Qtr 1 2011 | Qtr 1 2012 | Qtr 1 2011 | Qtr 1 2012 | Qtr 1 2011 | Qtr 1 2012 | % change | Qtr 1 2011 | Qtr 1 2012 |
| Michigan³ | 84,778 | 59,769 | -29.5 | 2.4% | 1.5% | 53,227 | 49,263 | 1,465,410 | 1,513,753 | 3.3 | 19.7% | 19.5% |
| Alcona | 29 | 31 | 5.7 | 0.7% | 0.7% | 33 | 22 | 1,487 | 1,425 | -4.1 | 16.7% | 16.3% |
| Alger | 23 | 21 | -10.1 | 0.6% | 0.5% | 26 | 16 | 1,295 | 1,269 | -2.0 | 16.0% | 15.8% |
| Allegan | 408 | 330 | -19.1 | 0.9% | 0.8% | 376 | 385 | 16,910 | 16,604 | -1.8 | 17.5% | 17.2% |
| Alpena | 210 | 167 | -20.2 | 2.0% | 1.4% | 190 | 154 | 4,913 | 4,881 | -0.7 | 22.1% | 22.0% |
| Antrim | 54 | 45 | -16.6 | 0.5% | 0.5% | 75 | 46 | 3,959 | 3,831 | -3.2 | 19.3% | 18.9% |
| Arenac | 98 | 65 | -33.9 | 1.5% | 1.0% | 62 | 80 | 2,926 | 2,972 | 1.6 | 23.4% | 23.5% |
| Baraga | 53 | 51 | -3.1 | 1.7% | 1.4% | 28 | 26 | 1,327 | 1,308 | -1.5 | 18.7% | 18.3% |
| Barry | 191 | 138 | -27.8 | 0.9% | 0.6% | 193 | 184 | 8,011 | 7,936 | -0.9 | 15.7% | 15.3% |
| Bay | 649 | 475 | -26.7 | 1.6% | 1.1% | 819 | 740 | 16,318 | 16,218 | -0.6 | 19.4% | 19.1% |
| Benzie | 41 | 40 | -1.6 | 0.5% | 0.6% | 29 | 28 | 2,718 | 2,710 | -0.3 | 17.8% | 17.9% |
| Berrien | 1,491 | 957 | -35.9 | 2.4% | 1.5% | 1,126 | 983 | 25,536 | 26,965 | 5.6 | 22.0% | 21.8% |
| Branch | 330 | 256 | -22.2 | 2.1% | 1.5% | 213 | 217 | 8,115 | 8,096 | -0.2 | 21.9% | 21.4% |
| Calhoun | 1,541 | 1,060 | -31.2 | 3.2% | 2.0% | 1,049 | 888 | 24,401 | 25,023 | 2.5 | 24.2% | 24.0% |
| Cass | 343 | 178 | -48.1 | 1.9% | 0.8% | 264 | 233 | 8,819 | 9,011 | 2.2 | 20.5% | 20.2% |
| Charlevoix | 42 | 32 | -24.4 | 0.3% | 0.3% | 70 | 65 | 3,964 | 3,985 | 0.5 | 17.2% | 17.3% |
| Cheboygan | 122 | 76 | -37.4 | 1.0% | 0.7% | 79 | 94 | 4,889 | 4,935 | 0.9 | 22.4% | 22.2% |
| Chippewa | 186 | 184 | -1.3 | 1.3% | 1.2% | 133 | 111 | 5,390 | 5,278 | -2.1 | 17.5% | 17.1% |
| Clare | 274 | 220 | -19.8 | 2.5% | 1.8% | 126 | 126 | 6,310 | 6,577 | 4.2 | 26.9% | 27.2% |
| Clinton | 93 | 96 | 3.2 | 0.4% | 0.3% | 180 | 177 | 6,572 | 6,694 | 1.9 | 9.9% | 10.0% |
| Crawford | 78 | 67 | -14.5 | 1.1% | 1.2% | 55 | 47 | 2,629 | 2,576 | -2.0 | 22.5% | 21.9% |
| Delta | 155 | 100 | -35.6 | 1.2% | 0.6% | 169 | 160 | 6,047 | 6,022 | -0.4 | 20.1% | 19.7% |
| Dickinson | 62 | 34 | -45.4 | 0.5% | 0.3% | 137 | 119 | 4,126 | 4,169 | 1.0 | 18.4% | 18.4% |
| Eaton | 283 | 223 | -21.2 | 0.6% | 0.5% | 478 | 421 | 12,815 | 12,886 | 0.6 | 13.8% | 13.6% |
| Emmet | 45 | 41 | -8.8 | 0.3% | 0.3% | 112 | 114 | 5,264 | 4,975 | -5.5 | 18.1% | 17.1% |
| Genesee | 7,999 | 5,836 | -27.0 | 5.3% | 3.6% | 4,933 | 4,421 | 69,811 | 73,567 | 5.4 | 25.1% | 24.7% |
| Gladwin | 175 | 125 | -28.5 | 1.9% | 1.2% | 108 | 99 | 4,609 | 4,444 | -3.6 | 22.9% | 21.7% |
| Gogebic | 199 | 114 | -42.6 | 3.5% | 1.8% | 43 | 44 | 2,496 | 2,658 | 6.5 | 21.0% | 20.9% |
| Gr. Traverse | 188 | 161 | -14.3 | 0.5% | 0.4% | 329 | 298 | 12,860 | 12,570 | -2.3 | 16.9% | 16.4% |
| Gratiot | 155 | 101 | -34.5 | 1.0% | 0.6% | 161 | 166 | 7,286 | 7,216 | -1.0 | 20.3% | 20.1% |
| Hillsdale | 346 | 275 | -20.5 | 2.0% | 1.6% | 180 | 174 | 7,674 | 7,862 | 2.5 | 21.0% | 21.0% |
| Houghton | 84 | 73 | -12.7 | 0.6% | 0.5% | 81 | 82 | 5,383 | 5,347 | -0.7 | 17.0% | 16.9% |
| Huron | 104 | 90 | -13.7 | 0.8% | 0.6% | 141 | 162 | 5,309 | 5,039 | -5.1 | 19.1% | 18.4% |
| Ingham | 1,663 | 1,345 | -19.1 | 1.7% | 1.3% | 1,501 | 1,386 | 39,308 | 39,843 | 1.4 | 18.1% | 18.1% |
| Ionia | 260 | 163 | -37.4 | 1.1% | 0.6% | 249 | 244 | 9,731 | 9,778 | 0.5 | 18.0% | 17.8% |
| Iosco | 180 | 159 | -11.7 | 1.6% | 1.5% | 118 | 137 | 4,804 | 4,982 | 3.7 | 23.2% | 24.2% |
| Iron | 67 | 73 | 9.0 | 1.6% | 1.6% | 27 | 13 | 2,085 | 1,981 | -5.0 | 21.9% | 21.1% |
| Isabella | 186 | 137 | -26.2 | 0.7% | 0.5% | 268 | 262 | 9,130 | 8,607 | -5.7 | 15.5% | 14.6% |
| Jackson | 1,431 | 1,131 | -21.0 | 2.4% | 1.9% | 824 | 918 | 24,590 | 25,657 | 4.3 | 20.2% | 20.5% |
| Kalamazoo | 2,403 | 1,638 | -31.8 | 2.7% | 1.7% | 1,657 | 1,602 | 32,537 | 34,488 | 6.0 | 17.9% | 17.8% |
| Kalkaska | 59 | 39 | -33.5 | 0.9% | 0.6% | 93 | 71 | 3,715 | 3,748 | 0.9 | 24.9% | 24.6% |
| Kent | 4,815 | 3,396 | -29.5 | 2.2% | 1.4% | 3,939 | 3,687 | 93,242 | 96,587 | 3.6 | 19.9% | 19.6% |
| Keweenaw | 8 | 5 | -44.0 | 0.4% | 0.4% | 1 | 1 | 281 | 251 | -10.6 | 15.7% | 14.0% |
| Lake | 91 | 71 | -21.9 | 2.3% | 1.5% | 43 | 51 | 2,385 | 2,415 | 1.2 | 27.6% | 27.4% |
| Lapeer | 354 | 202 | -43.0 | 1.1% | 0.6% | 346 | 327 | 12,562 | 12,694 | 1.1 | 16.5% | 16.3% |
| Leelanau | 20 | 13 | -32.2 | 0.2% | 0.2% | 24 | 28 | 1,869 | 1,849 | -1.0 | 9.5% | 9.4% |

¹ Includes both regular and extended FIP.

² Population figures based on U.S. Census Bureau county estimates from July of the previous year.

³ In some cases the Michigan number is slightly different from the county total.

Data sources: Unemployment: Bureau of Labor Statistics, Local Area Unemployment Statistics; Public Assistance: Michigan Department of Human Services.

|  Prepared by: Michigan League for Human Services | Family Independence Program (Cash Assistance) | | | | | Child Day Care | | Medicaid | | | | |
|--|--|---------------|-------------|--|---------------|---|---------------|--|---------------|-------------|---|---------------|
| | Average Number of Families Receiving Cash Assistance Per Month ¹ | | | Percent of Population Receiving Assistance ² | | Average Number of Children Receiving Care Per Month | | Average Number of Persons Eligible for Medicaid ONLY (Excludes FIP & SSI Recipients) | | | Percent of Population Eligible for Medicaid (Includes FIP & SSI Recipients) ² | |
| | Qtr 1 2011 | Qtr 1 2012 | % change | Qtr 1 2011 | Qtr 1 2012 | Qtr 1 2011 | Qtr 1 2012 | Qtr 1 2011 | Qtr 1 2012 | % change | Qtr 1 2011 | Qtr 1 2012 |
| County | Qtr 1 2011 | Qtr 1 2012 | % change | Qtr 1 2011 | Qtr 1 2012 | Qtr 1 2011 | Qtr 1 2012 | Qtr 1 2011 | Qtr 1 2012 | % change | Qtr 1 2011 | Qtr 1 2012 |
| Lenawee | 515 | 458 | -11.1 | 1.3% | 1.2% | 481 | 464 | 14,788 | 14,787 | 0.0 | 18.0% | 18.0% |
| Livingston | 265 | 218 | -17.8 | 0.4% | 0.3% | 247 | 270 | 14,675 | 14,417 | -1.8 | 9.0% | 8.8% |
| Luce | 45 | 43 | -4.5 | 2.3% | 2.0% | 18 | 12 | 1,023 | 1,017 | -0.6 | 21.0% | 20.6% |
| Mackinac | 45 | 41 | -10.3 | 0.9% | 1.0% | 11 | 18 | 1,470 | 1,477 | 0.5 | 16.1% | 16.3% |
| Macomb | 4,233 | 3,556 | -16.0 | 1.4% | 1.1% | 2,984 | 2,860 | 107,820 | 109,479 | 1.5 | 16.0% | 16.1% |
| Manistee | 113 | 81 | -28.4 | 1.4% | 0.8% | 53 | 56 | 3,825 | 3,921 | 2.5 | 19.2% | 19.2% |
| Marquette | 232 | 205 | -11.7 | 0.9% | 0.7% | 247 | 206 | 8,471 | 8,294 | -2.1 | 15.2% | 14.7% |
| Mason | 160 | 140 | -12.3 | 1.5% | 1.1% | 240 | 249 | 5,274 | 5,322 | 0.9 | 22.4% | 22.4% |
| Mecosta | 161 | 160 | -0.6 | 1.1% | 0.9% | 150 | 156 | 7,388 | 7,227 | -2.2 | 20.7% | 20.1% |
| Menominee | 72 | 46 | -36.9 | 0.7% | 0.4% | 83 | 57 | 3,758 | 3,593 | -4.4 | 18.2% | 17.3% |
| Midland | 240 | 166 | -30.6 | 0.8% | 0.5% | 299 | 305 | 10,682 | 10,713 | 0.3 | 15.3% | 15.0% |
| Missaukee | 68 | 64 | -6.8 | 1.1% | 1.1% | 70 | 57 | 2,835 | 2,837 | 0.1 | 22.1% | 22.0% |
| Monroe | 888 | 548 | -38.3 | 1.5% | 0.9% | 513 | 452 | 18,006 | 19,311 | 7.2 | 15.0% | 15.3% |
| Montcalm | 158 | 90 | -43.2 | 0.7% | 0.3% | 186 | 180 | 11,778 | 11,768 | -0.1 | 21.8% | 21.7% |
| Montmorency | 50 | 31 | -38.7 | 1.4% | 0.8% | 24 | 20 | 1,827 | 1,818 | -0.5 | 23.3% | 23.0% |
| Muskegon | 3,409 | 2,348 | -31.1 | 5.4% | 3.4% | 1,850 | 1,811 | 30,059 | 32,458 | 8.0 | 26.3% | 25.9% |
| Newaygo | 366 | 263 | -28.0 | 1.8% | 1.3% | 202 | 217 | 9,935 | 9,859 | -0.8 | 25.1% | 24.4% |
| Oakland | 4,829 | 3,804 | -21.2 | 1.1% | 0.8% | 2,902 | 2,864 | 114,968 | 117,578 | 2.3 | 12.2% | 12.2% |
| Oceana | 300 | 200 | -33.4 | 3.1% | 2.2% | 124 | 119 | 5,858 | 6,038 | 3.1 | 28.0% | 27.7% |
| Ogemaw | 187 | 176 | -5.9 | 2.1% | 2.2% | 138 | 126 | 4,463 | 4,294 | -3.8 | 26.5% | 25.9% |
| Ontonagon | 27 | 20 | -28.0 | 1.2% | 0.8% | 4 | 5 | 961 | 961 | 0.0 | 17.6% | 17.7% |
| Osceola | 107 | 92 | -14.0 | 1.3% | 1.0% | 84 | 84 | 4,569 | 4,633 | 1.4 | 23.8% | 24.1% |
| Oscoda | 44 | 48 | 10.7 | 1.2% | 1.5% | 27 | 35 | 1,695 | 1,661 | -2.0 | 24.0% | 23.9% |
| Otsego | 121 | 100 | -17.6 | 1.3% | 1.0% | 236 | 178 | 4,930 | 4,799 | -2.7 | 23.6% | 23.1% |
| Ottawa | 477 | 409 | -14.3 | 0.5% | 0.3% | 756 | 732 | 28,798 | 28,908 | 0.4 | 12.3% | 12.2% |
| Presque Isle | 33 | 30 | -8.1 | 0.6% | 0.6% | 16 | 25 | 1,838 | 1,854 | 0.9 | 16.8% | 17.5% |
| Roscommon | 175 | 155 | -11.5 | 1.8% | 1.6% | 97 | 96 | 4,620 | 4,658 | 0.8 | 23.9% | 24.2% |
| Saginaw | 2,556 | 1,945 | -23.9 | 3.5% | 2.4% | 2,348 | 2,060 | 32,839 | 33,809 | 3.0 | 23.9% | 23.6% |
| St. Clair | 1,094 | 681 | -37.8 | 1.8% | 1.1% | 684 | 693 | 26,159 | 26,821 | 2.5 | 19.7% | 19.7% |
| St. Joseph | 376 | 239 | -36.4 | 1.6% | 1.0% | 345 | 335 | 13,370 | 13,601 | 1.7 | 25.4% | 25.2% |
| Sanilac | 256 | 206 | -19.3 | 1.4% | 1.2% | 193 | 195 | 8,265 | 7,843 | -5.1 | 22.8% | 21.7% |
| Schoolcraft | 44 | 44 | 0.8 | 1.2% | 1.3% | 22 | 18 | 1,391 | 1,373 | -1.3 | 20.6% | 20.3% |
| Shiawassee | 508 | 458 | -9.7 | 1.9% | 1.7% | 284 | 313 | 11,044 | 11,006 | -0.3 | 19.7% | 19.7% |
| Tuscola | 375 | 288 | -23.2 | 1.6% | 1.3% | 261 | 232 | 9,923 | 9,619 | -3.1 | 21.6% | 20.9% |
| Van Buren | 547 | 363 | -33.6 | 1.7% | 1.1% | 327 | 322 | 15,390 | 15,666 | 1.8 | 24.6% | 24.5% |
| Washtenaw | 1,150 | 927 | -19.4 | 0.9% | 0.6% | 1,224 | 1,185 | 31,693 | 32,592 | 2.8 | 11.4% | 11.5% |
| Wayne | 32,730 | 20,899 | -36.1 | 4.9% | 2.9% | 14,201 | 12,415 | 344,721 | 371,727 | 7.8 | 28.2% | 27.9% |
| Wexford | 219 | 177 | -19.2 | 1.8% | 1.3% | 185 | 213 | 6,941 | 6,915 | -0.4 | 26.0% | 25.8% |

¹ Population figures based on U.S. Census Bureau county estimates from July of the previous year.

² In some cases the Michigan number is slightly different from the county total.

³ Includes both regular and extended FIP.

Data sources: Unemployment: Bureau of Labor Statistics, Local Area Unemployment Statistics; Public Assistance: Michigan Department of Human Services.

Employment Trends by Selected Industries in Michigan
(data not seasonally adjusted, rounded to the nearest hundred)

| Industry | Avg 2011 Qtr 1 | Avg 2012 Qtr 1 | % Change | Industry | Avg 2011 Qtr 1 | Avg 2012 Qtr 1 | % Change |
|--|-------------------|-------------------|-------------|---|-------------------|-------------------|-------------|
| TOTAL NONFARM | 3,850,767 | 3,906,567 | 1.4 | •Retail Trade | 435,700 | 432,967 | -0.6 |
| Natural Resources and Mining | 6,700 | 6,800 | 1.5 | Motor Vehicle and Parts Dealers | 50,733 | 52,900 | 4.3 |
| Construction | 106,767 | 104,100 | -2.5 | Building Material and Garden Equip. and Supplies Dealers | 37,400 | 38,067 | 1.8 |
| Construction of Buildings | 24,600 | 23,033 | -6.4 | Food and Beverage Stores | 71,967 | 70,333 | -2.3 |
| Heavy and Civil Engineering | 10,233 | 10,233 | 0.0 | Health and Personal Care | 30,233 | 30,100 | -0.4 |
| Specialty Trade Contractors | 71,933 | 70,833 | -1.5 | Gasoline Stations | 24,000 | 23,633 | -1.5 |
| Manufacturing | 491,833 | 517,400 | 5.2 | Clothing and Clothing Accessories | 31,033 | 26,467 | -14.7 |
| •Durable Goods | 366,300 | 387,700 | 5.8 | Sporting Goods, Hobby, Book, and Music Stores | 19,567 | 19,433 | -0.7 |
| Nonmetallic Mineral Products | 10,000 | 9,433 | -5.7 | General Merchandise Stores | 110,133 | 108,767 | -1.2 |
| Primary Metal Manufacturing | 19,200 | 20,600 | 7.3 | Miscellaneous Store Retail | 20,933 | 22,433 | 7.2 |
| Fabricated Metal Products | 68,567 | 72,600 | 5.9 | •Transportation Warehousing & Utilities | 114,300 | 117,667 | 2.9 |
| Metalworking Machinery Manuf. | 30,567 | 33,867 | 10.8 | Air Transportation | 14,200 | 14,633 | 3.1 |
| Computer and Electronic Products | 17,200 | 17,600 | 2.3 | Rail Transportation | 3,900 | 3,900 | 0.0 |
| Motor Vehicle Manufacturing | 36,133 | 38,567 | 6.7 | Truck Transportation | 35,067 | 36,100 | 2.9 |
| Motor Vehicle Parts Manufacturing | 90,333 | 98,367 | 8.9 | Warehousing and Storage | 12,300 | 12,833 | 4.3 |
| Furniture and Related Products | 19,000 | 19,333 | 1.8 | Information | 53,567 | 53,067 | -0.9 |
| •Non-Durable Goods | 125,533 | 129,700 | 3.3 | Publishing Industries | 16,033 | 15,633 | -2.5 |
| Food Manufacturing | 32,967 | 32,700 | -0.8 | Telecommunications | 19,733 | 18,967 | -3.9 |
| Printing and Related Support Activities | 14,067 | 14,033 | -0.2 | Financial Activities | 190,933 | 194,333 | 1.8 |
| Chemical Manufacturing | 26,433 | 26,900 | 1.8 | Finance and Insurance | 142,433 | 145,667 | 2.3 |
| Plastics and Rubber Products | 31,067 | 32,733 | 5.4 | Real Estate | 33,933 | 35,833 | 5.6 |
| Trade Transportation & Utilities | 701,333 | 707,433 | 0.9 | Professional & Business Services | 533,867 | 553,633 | 3.7 |
| •Wholesale Trade | 151,333 | 156,800 | 3.6 | Legal Services | 27,100 | 27,333 | 0.9 |
| Merchant Wholesalers Durable Goods | 82,600 | 86,667 | 4.9 | Accounting, Tax Preparation, Bookkeeping & Payroll Services | 30,300 | 34,500 | 13.9 |
| Merchant Wholesalers Nondurable Goods | 44,167 | 46,667 | 5.7 | Architectural Engineering | 60,000 | 61,700 | 2.8 |
| Wholesale Electronic Markets and Agents and Brokers | 24,567 | 23,467 | -4.5 | | | | |

Note: Industry details and subtotals may not sum to totals due to rounding.

Source: DLEG/Office of Labor Market Information, Current Employment Statistics Section - (800) 225-3732

Employment Trends by Selected Industries in Michigan
(data not seasonally adjusted, rounded to the nearest hundred)

| Industry | Avg 2011 Qtr 1 | Avg 2012 Qtr 1 | % Change | Industry | Avg 2011 Qtr 1 | Avg 2012 Qtr 1 | % Change |
|--|-------------------|-------------------|-------------|---|-------------------|-------------------|-------------|
| Computer Systems Design | 38,833 | 40,700 | 4.8 | Government | 633,167 | 623,267 | -1.6 |
| Management, Scientific and Technical Consulting Services | 22,000 | 23,400 | 6.4 | • Federal Government | 53,167 | 52,067 | -2.1 |
| Scientific Research and Development Services | 18,800 | 18,900 | 0.5 | U.S. Postal Service | 22,167 | 21,300 | -3.9 |
| Advertising and Related | 12,600 | 12,800 | 1.6 | • State Government | 183,400 | 181,667 | -0.9 |
| Management of Companies | 52,167 | 53,633 | 2.8 | State Government Educational Services | 117,900 | 117,000 | -0.8 |
| Administrative & Support Services | 250,467 | 259,467 | 3.6 | • Local Government | 396,600 | 389,533 | -1.8 |
| Employment Services | 142,633 | 144,300 | 1.2 | Local Government Educational Services | 224,067 | 218,767 | -2.4 |
| Educational and Health Services | 614,633 | 626,267 | 1.9 | Local Government Elementary and Secondary Schools | 196,933 | 191,133 | -2.9 |
| • Educational Services | 75,933 | 80,033 | 5.4 | Local Government Junior Colleges | 27,100 | 27,633 | 2.0 |
| (see also Government) | | | | | | | |
| • Health Care & Social Assistance | 538,700 | 546,233 | 1.4 | | | | |
| Ambulatory Health Care Services | 185,367 | 190,200 | 2.6 | | | | |
| Offices of Physicians | 69,533 | 70,367 | 1.2 | | | | |
| Outpatient Care Centers | 16,833 | 17,133 | 1.8 | | | | |
| Home Health Care Service | 35,267 | 36,200 | 2.6 | | | | |
| Hospitals | 73,500 | 74,633 | 1.5 | | | | |
| Nursing and Residential Care Facilities | 98,767 | 99,267 | 0.5 | | | | |
| Social Assistance | 63,967 | 63,767 | -0.3 | | | | |
| Individual and Family Services | 27,933 | 27,933 | 0.0 | | | | |
| Leisure and Hospitality | 353,400 | 353,433 | 0.0 | | | | |
| Performing Arts Spectator Activities | 8,100 | 7,100 | -12.3 | | | | |
| Amusement, Gambling & Recreation | 27,367 | 28,900 | 5.6 | | | | |
| Accommodations | 36,433 | 33,867 | -7.0 | | | | |
| Food Services and Drinking | 278,167 | 281,900 | 1.3 | | | | |
| Other Services | 164,567 | 166,833 | 1.4 | | | | |
| Repair and Maintenance | 34,667 | 36,233 | 4.5 | | | | |
| Personal and Laundry Services | 36,233 | 36,400 | 0.5 | | | | |
| Religious Grantmaking Civic Professional | 93,667 | 94,200 | 0.6 | | | | |

VISIT OUR WEBSITE FOR MORE INFORMATION!

The "Workforce Development" section of the Michigan League for Human Services website has information on Adult Learning, Low-Wage Jobs, and Unemployment. It also includes back issues of the Economic Security Bulletin. Go to www.MiLHS.org and click the "Policy" tab at the top, then "Workforce Development"

Note: Industry details and subtotals may not sum to totals due to rounding.

Source: DLEG/Office of Labor Market Information, Current Employment Statistics Section - (800) 225-3732



Michigan League for Human Services

1223 Turner Street, Suite G-1
 Lansing, MI 48906
 (517) 487-5436 — Fax (517) 371-4546
 Web site: www.milhs.org

A United Way Agency

Economic Security

June 2012

**Percentage Change in Michigan Counties With Largest Changes
 First Quarter 2011 — First Quarter 2012**

| Percentage Point Change in Unemployment Rate | | Percent Change in Food Assistance Households | | Percent Change in FIP Cash Assistance Families | |
|--|-------------|--|--------------|--|--------------|
| Ontonagon | -3.9 | Isabella | -51.3 | Cass | -48.1 |
| Lapeer | -3.3 | Mecosta | -35.0 | Dickinson | -45.4 |
| Baraga | -3.3 | Marquette | -24.2 | Montcalm | -43.2 |
| Alcona | -3.2 | Ottawa | -23.5 | Lapeer | -43.0 |
| Lenawee | -2.7 | Houghton | -22.8 | Gogebic | -42.6 |
| Kalkaska | -2.6 | Ingham | -19.9 | Montmorency | -38.7 |
| St. Clair | -2.6 | Clinton | -19.8 | Monroe | -38.3 |
| Hillsdale | -2.5 | Kalamazoo | -19.6 | St. Clair | -37.8 |
| Newaygo | -2.5 | Washtenaw | -16.4 | Ionia | -37.4 |
| Oscoda | -2.5 | Leelanau | -14.6 | Cheboygan | -37.4 |

Note: Counties in bold have population of 100,000 or more.

Sources: Unemployment: Bureau of Labor Statistics, Local Area Unemployment Statistics; Public Assistance: Michigan Department of Human Services