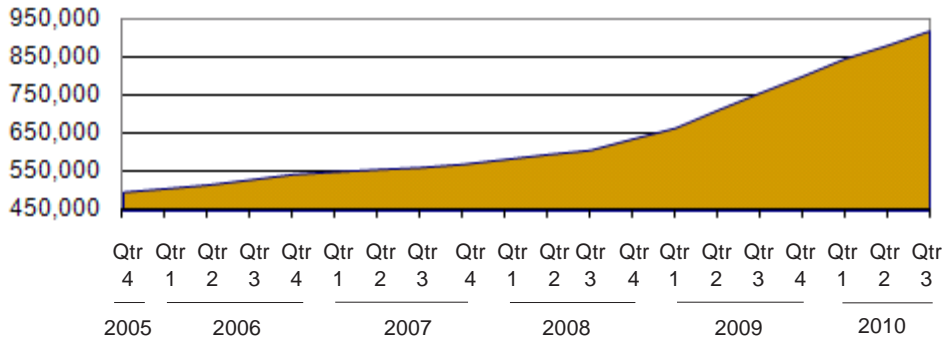
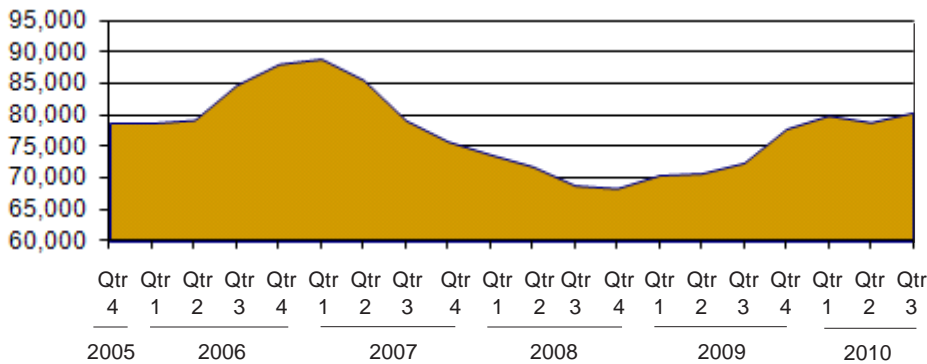


Food Assistance Households During the Past Five Years



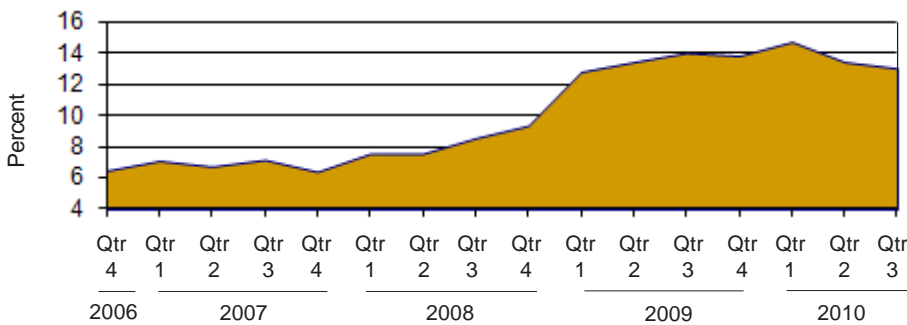
Source: Michigan Department of Human Services

Family Independence Program Cases During the Past Five Years (Regular FIP only)



Source: Michigan Department of Human Services

Michigan's Unemployment Rate Over the Past Four Years (not seasonally adjusted)



Source: Bureau of Labor Statistics


Motor vehicle manufacturing jobs see small increase over last year

Unemployment

Michigan's unemployment rate during the third quarter of 2010 was 13.1, down a full point from the same quarter of 2009. Over the same period, motor vehicle manufacturing went up by 8.5 percent and motor vehicle parts manufacturing increased by 6.9 percent. The sector seeing the largest increase was employment services, which increased by 18 percent. Overall, the private sector saw an increase of approximately 20,000 jobs.

Public Assistance

During the third quarter of 2010, nearly 19 percent of Michigan's population received Food Assistance. Several of Michigan's largest counties had caseload increases of over 25 percent during the past year, led by Oakland (38.1 percent) and also including Livingston, Macomb, Washtenaw, Ottawa and Ingham.

 Prepared by: Michigan League for Human Services	Unemployment (data not seasonally adjusted)						Food Assistance Program				
	Unemployment Rate			Number Unemployed			Average Number of Households Per Month			Percent of Population Receiving Assistance ²	
	County	Qtr 3 2009	Qtr 3 2010	+/- points	Qtr 3 2009	Qtr 3 2010	% change	Qtr 3 2009	Qtr 3 2010	% change	Qtr 3 2009
Michigan¹	14.1	13.1	-1.0	693,885	635,833	-8.4	760,137	922,956	21.4	15.9%	18.7%
Alcona	17.7	17.5	-0.3	761	709	-6.8	710	861	21.3	13.5%	15.9%
Alger	11.5	11.8	0.3	513	516	0.5	519	593	14.3	11.0%	13.2%
Allegan	12.7	11.8	-0.8	6,960	6,442	-7.4	6,208	7,069	13.9	13.1%	14.6%
Alpena	13.7	13.1	-0.6	2,033	1,872	-7.9	2,892	3,302	14.2	18.7%	21.5%
Antrim	13.8	14.1	0.4	1,671	1,635	-2.2	1,398	1,620	15.9	13.8%	15.5%
Arenac	14.9	15.1	0.1	1,213	1,153	-4.9	1,574	1,698	7.9	20.5%	21.9%
Baraga	22.6	22.4	-0.2	1,028	959	-6.7	568	686	20.8	14.2%	16.1%
Barry	10.4	9.9	-0.5	3,017	2,883	-4.4	3,386	3,845	13.5	13.3%	14.6%
Bay	12.0	11.9	-0.1	6,534	6,502	-0.5	8,940	10,221	14.3	16.9%	18.8%
Benzie	11.3	13.3	2.1	1,012	1,213	19.9	1,050	1,178	12.2	13.5%	15.1%
Berrien	12.9	13.0	0.1	10,146	10,037	-1.1	13,201	15,424	16.8	17.3%	19.8%
Branch	14.2	13.0	-1.2	3,039	2,707	-10.9	3,476	3,828	10.1	17.4%	18.8%
Calhoun	12.0	11.8	-0.2	8,277	8,074	-2.5	15,401	16,815	9.2	22.8%	24.2%
Cass	10.9	10.9	0.0	2,758	2,745	-0.5	3,968	4,462	12.5	18.2%	20.3%
Charlevoix	12.7	13.1	0.4	1,835	1,876	2.2	1,307	1,653	26.5	11.6%	14.6%
Cheboygan	8.4	8.3	-0.1	1,051	995	-5.3	2,025	2,377	17.4	16.7%	19.6%
Chippewa	11.5	12.7	1.1	2,002	2,219	10.8	2,459	2,955	20.1	13.1%	15.5%
Clare	16.2	16.1	-0.1	2,113	2,014	-4.7	3,593	4,024	12.0	24.9%	27.4%
Clinton	9.5	9.1	-0.4	3,484	3,320	-4.7	2,836	3,538	24.8	8.4%	10.0%
Crawford	12.7	12.5	-0.2	839	813	-3.1	1,199	1,367	14.0	17.6%	20.1%
Delta	11.7	12.2	0.4	2,320	2,346	1.1	2,872	3,290	14.6	15.4%	17.4%
Dickinson	11.5	11.2	-0.3	1,663	1,577	-5.1	1,604	1,809	12.8	11.9%	13.6%
Eaton	10.4	9.3	-1.0	5,927	5,291	-10.7	5,357	6,580	22.8	11.1%	12.9%
Emmet	11.5	12.6	1.2	2,348	2,553	8.7	1,943	2,292	17.9	12.6%	14.0%
Genesee	15.2	14.3	-0.9	29,851	28,040	-6.1	47,328	55,020	16.3	23.0%	26.2%
Gladwin	16.3	16.1	-0.2	1,686	1,634	-3.0	2,241	2,589	15.5	18.3%	21.0%
Gogebic	12.9	14.1	1.2	964	1,032	7.0	1,462	1,691	15.7	17.5%	19.8%
Gr. Traverse	11.2	11.4	0.2	5,629	5,690	1.1	5,381	6,413	19.2	12.4%	14.6%
Gratiot	14.0	13.3	-0.7	2,715	2,544	-6.3	2,932	3,348	14.2	16.1%	18.0%
Hillsdale	17.6	15.4	-2.2	3,657	3,009	-17.7	3,252	3,656	12.4	16.9%	18.7%
Houghton	10.2	11.2	1.0	1,769	1,930	9.1	2,245	2,968	32.2	12.6%	15.5%
Huron	14.4	13.9	-0.5	2,311	2,108	-8.8	2,203	2,390	8.5	14.1%	15.5%
Ingham	11.8	11.2	-0.6	17,619	16,712	-5.1	24,814	31,650	27.5	17.1%	20.4%
Ionia	13.8	12.8	-0.9	4,070	3,789	-6.9	4,262	4,697	10.2	15.0%	16.6%
Iosco	16.6	16.3	-0.3	1,756	1,630	-7.2	2,714	3,044	12.2	21.3%	23.4%
Iron	11.4	11.4	0.0	659	644	-2.3	824	964	16.9	14.6%	16.7%
Isabella	8.8	9.2	0.4	3,437	3,596	4.6	7,180	9,680	34.8	17.3%	22.0%
Jackson	14.3	13.2	-1.1	10,835	9,869	-8.9	12,226	14,480	18.4	16.7%	19.2%
Kalamazoo	10.7	11.1	0.4	14,301	14,666	2.6	21,083	26,710	26.7	16.4%	19.2%
Kalkaska	13.6	13.0	-0.6	1,215	1,142	-6.0	1,508	1,728	14.6	20.3%	23.4%
Kent	11.4	10.8	-0.6	35,601	33,939	-4.7	42,054	52,967	25.9	14.7%	17.7%
Keweenaw	12.3	11.9	-0.4	129	123	-5.2	116	137	17.5	10.3%	12.6%
Lake	15.8	15.3	-0.5	649	656	1.0	1,476	1,647	11.6	26.8%	29.3%
Lapeer	16.9	14.2	-2.7	7,337	6,061	-17.4	4,463	5,510	23.5	11.8%	14.3%
Leelanau	8.4	9.5	1.2	944	1,079	14.4	610	800	31.2	6.5%	8.1%
Lenawee	16.0	14.9	-1.1	7,644	6,890	-9.9	6,348	7,576	19.3	14.2%	16.8%
Livingston	12.5	11.5	-1.0	11,444	10,518	-8.1	4,912	6,671	35.8	6.0%	7.9%
Luce	12.2	13.9	1.7	336	381	13.4	519	537	3.5	16.5%	16.6%
Mackinac	5.7	5.8	0.1	411	410	-0.1	576	701	21.7	11.1%	13.4%
Macomb	16.8	14.3	-2.5	70,734	59,464	-15.9	45,226	59,023	30.5	11.7%	15.1%

¹In some cases the Michigan number is slightly different from the county total.

²Population figures based on U.S. Census Bureau county estimates from July of the previous year.

Data sources: Unemployment: Bureau of Labor Statistics, Local Area Unemployment Statistics; Public Assistance: Michigan Department of Human Services.


Family Independence Program (Cash Assistance)			Child Day Care						Medicaid					
Average Number of Families Receiving Cash Assistance Per Month ³			Percent of Population Receiving Assistance ²		Average Number of Children Receiving Care Per Month		Average Payment Per Child		Average Number of Persons Eligible for Medicaid ONLY (Excludes FIP & SSI Recipients)			Percent of Population Eligible for Medicaid (Includes FIP & SSI Recipients) ²		
Qtr 3 2009	Qtr 3 2010	% change	Qtr 3 2009	Qtr 3 2010	Qtr 3 2009	Qtr 3 2010	Qtr 3 2009	Qtr 3 2010	Qtr 3 2009	Qtr 3 2010	% change	Qtr 3 2009	Qtr 3 2010	
75,604	83,858	10.9	2.1%	2.3%	72,434	60,934	\$347	\$331	1,361,442	1,439,667	5.7	17.6%	19.2%	
27	26	-6.1	0.6%	0.6%	17	26	\$264	\$288	1,462	1,524	4.3	15.4%	16.7%	
24	27	11.0	0.5%	0.7%	18	21	\$222	\$202	1,281	1,311	2.3	15.9%	16.8%	
415	424	2.2	0.9%	0.9%	546	485	\$307	\$336	16,515	17,237	4.4	16.6%	17.5%	
213	229	7.5	1.8%	2.0%	220	199	\$262	\$247	4,810	4,799	-0.2	21.5%	22.1%	
47	45	-3.5	0.4%	0.4%	106	102	\$268	\$264	3,829	3,968	3.6	17.9%	18.9%	
77	84	9.5	1.2%	1.2%	132	86	\$275	\$285	2,929	2,960	1.0	22.4%	23.1%	
53	56	5.0	1.4%	1.6%	42	27	\$248	\$299	1,260	1,338	6.2	18.0%	19.3%	
235	200	-15.0	1.1%	0.9%	216	179	\$290	\$304	7,544	7,967	5.6	14.7%	15.8%	
637	650	2.0	1.5%	1.5%	1,081	913	\$287	\$285	15,391	16,315	6.0	17.9%	19.4%	
37	42	11.6	0.6%	0.6%	68	46	\$289	\$325	2,648	2,669	0.8	17.3%	17.8%	
1,286	1,452	12.9	2.1%	2.4%	1,301	1,258	\$327	\$327	25,109	26,049	3.7	20.5%	21.7%	
354	338	-4.5	2.1%	2.1%	303	265	\$291	\$328	7,547	7,900	4.7	20.1%	21.7%	
1,753	1,603	-8.6	3.4%	3.1%	1,222	1,065	\$306	\$316	22,899	23,928	4.5	23.0%	24.1%	
331	338	2.2	1.7%	1.8%	376	325	\$328	\$349	8,454	8,724	3.2	20.3%	21.2%	
39	38	-3.4	0.3%	0.3%	127	71	\$277	\$326	3,594	3,931	9.4	14.8%	17.1%	
80	99	24.2	0.7%	0.9%	131	125	\$285	\$334	4,755	4,911	3.3	20.8%	22.3%	
166	194	16.9	1.1%	1.2%	225	167	\$265	\$318	5,057	5,271	4.2	16.1%	17.1%	
264	274	3.5	2.2%	2.4%	144	122	\$273	\$295	5,921	6,049	2.2	25.6%	26.8%	
114	120	5.6	0.4%	0.4%	224	202	\$322	\$334	6,071	6,344	4.5	9.8%	10.4%	
64	60	-5.2	1.0%	1.1%	72	64	\$272	\$290	2,480	2,643	6.5	19.8%	22.1%	
137	163	19.2	0.9%	1.1%	181	171	\$225	\$260	5,761	5,873	1.9	18.8%	19.7%	
57	51	-9.9	0.4%	0.4%	142	140	\$185	\$253	4,000	4,118	2.9	17.0%	17.8%	
254	278	9.5	0.6%	0.6%	530	557	\$355	\$331	11,762	12,500	6.3	12.4%	13.7%	
53	50	-5.1	0.3%	0.3%	193	126	\$251	\$314	5,056	5,116	1.2	16.9%	17.1%	
6,638	7,677	15.6	4.3%	5.1%	6,590	5,682	\$399	\$325	67,962	69,671	2.5	23.2%	24.9%	
158	174	10.4	1.5%	1.7%	128	108	\$265	\$289	4,314	4,537	5.2	20.4%	22.5%	
185	200	7.9	3.1%	3.6%	46	51	\$208	\$254	2,311	2,425	4.9	19.8%	21.4%	
151	169	12.1	0.4%	0.5%	447	385	\$303	\$311	12,055	12,565	4.2	15.8%	16.7%	
186	170	-8.4	1.2%	1.1%	272	243	\$281	\$281	6,836	6,969	2.0	19.2%	19.8%	
271	309	13.8	1.7%	1.9%	224	195	\$264	\$274	7,191	7,543	4.9	19.3%	20.9%	
85	88	2.7	0.6%	0.6%	93	94	\$211	\$249	5,171	5,298	2.5	16.9%	17.5%	
98	112	14.2	0.7%	0.9%	160	158	\$236	\$281	5,168	5,262	1.8	18.6%	19.5%	
1,642	1,652	0.6	1.6%	1.7%	1,870	1,636	\$396	\$343	36,660	38,727	5.6	16.8%	18.0%	
291	277	-4.8	1.2%	1.1%	281	272	\$289	\$298	9,071	9,422	3.9	16.8%	17.9%	
154	164	6.5	1.4%	1.5%	132	111	\$269	\$278	4,715	4,806	1.9	22.2%	23.0%	
69	63	-8.2	1.6%	1.4%	35	34	\$176	\$182	2,017	2,075	2.9	21.1%	21.9%	
185	196	5.6	0.6%	0.7%	330	305	\$285	\$302	8,310	8,789	5.8	14.6%	15.7%	
1,110	1,340	20.7	1.8%	2.2%	942	870	\$323	\$325	22,780	23,729	4.2	18.1%	19.5%	
1,950	2,316	18.8	2.2%	2.5%	1,917	1,759	\$347	\$334	30,929	32,135	3.9	16.7%	17.7%	
62	61	-2.1	0.9%	0.9%	93	78	\$271	\$321	3,571	3,705	3.7	23.4%	25.2%	
4,701	5,130	9.1	2.0%	2.2%	4,765	4,443	\$358	\$330	85,770	91,183	6.3	18.0%	19.5%	
1	3	200.0	0.0%	0.1%	2	1	\$208	\$399	268	284	6.0	13.5%	14.2%	
105	107	1.3	2.5%	2.4%	67	68	\$262	\$297	2,219	2,288	3.1	27.5%	28.5%	
279	338	21.3	0.8%	1.0%	361	364	\$283	\$305	11,548	12,401	7.4	14.1%	16.0%	
16	21	31.3	0.2%	0.3%	53	40	\$297	\$356	1,713	1,953	14.0	8.0%	9.8%	
434	472	8.8	1.1%	1.2%	631	512	\$310	\$311	13,909	14,559	4.7	16.3%	17.7%	
221	288	30.5	0.3%	0.4%	264	292	\$387	\$351	13,091	14,441	10.3	7.6%	8.8%	
39	45	16.2	1.7%	2.2%	30	28	\$333	\$329	1,079	1,042	-3.5	21.9%	21.7%	
27	40	46.9	0.6%	1.0%	31	20	\$282	\$353	1,379	1,439	4.4	15.1%	16.4%	
3,362	4,241	26.2	1.1%	1.4%	3,704	3,307	\$389	\$347	95,779	104,951	9.6	13.6%	15.7%	

¹ In some cases the Michigan number is slightly different from the county total.

² Population figures based on U.S. Census Bureau county estimates from July of the previous year.

³ Includes both regular and extended FIP.

Data sources: Unemployment: Bureau of Labor Statistics, Local Area Unemployment Statistics; Public Assistance: Michigan Department of Human Services.

 Prepared by: Michigan League for Human Services	Unemployment (data not seasonally adjusted)						Food Assistance Program				
	Unemployment Rate			Number Unemployed			Average Number of Households Per Month			Percent of Population Receiving Assistance ²	
	Qtr 3 2009	Qtr 3 2010	+/- points	Qtr 3 2009	Qtr 3 2010	% change	Qtr 3 2009	Qtr 3 2010	% change	Qtr 3 2009	Qtr 3 2010
Manistee	11.9	12.3	0.5	1,423	1,447	1.7	1,939	2,200	13.5	15.9%	18.3%
Marquette	9.8	10.0	0.3	3,541	3,577	1.0	4,380	5,642	28.8	12.5%	15.0%
Mason	12.3	11.9	-0.4	1,873	1,778	-5.1	2,394	2,661	11.2	18.4%	19.9%
Mecosta	13.1	13.2	0.2	2,510	2,503	-0.3	4,770	5,376	12.7	21.5%	23.4%
Menominee	12.7	10.6	-2.1	1,663	1,352	-18.7	1,631	1,846	13.1	14.0%	15.7%
Midland	9.9	9.9	-0.1	4,265	4,224	-1.0	4,847	5,670	17.0	12.3%	13.9%
Missaukee	14.6	15.0	0.4	912	902	-1.1	1,017	1,184	16.5	16.1%	18.4%
Monroe	14.7	13.3	-1.4	10,925	9,519	-12.9	7,939	9,472	19.3	11.5%	13.4%
Montcalm	17.1	16.1	-1.0	4,493	4,140	-7.9	5,160	5,908	14.5	18.9%	21.0%
Montmorency	18.6	18.8	0.2	743	724	-2.5	964	1,077	11.7	19.0%	21.0%
Muskegon	15.5	13.8	-1.6	13,689	12,006	-12.3	20,847	23,432	12.4	24.3%	26.5%
Newaygo	13.6	12.8	-0.8	3,004	2,831	-5.8	4,190	4,829	15.2	20.2%	22.4%
Oakland	14.2	12.9	-1.3	87,319	79,187	-9.3	46,743	64,566	38.1	8.0%	10.7%
Oceana	14.3	13.8	-0.5	2,107	2,018	-4.2	2,511	2,730	8.7	22.2%	23.6%
Ogemaw	12.5	12.5	0.0	1,232	1,224	-0.6	2,431	2,672	9.9	23.5%	25.7%
Ontonagon	13.0	18.2	5.2	426	566	32.8	503	579	15.2	13.5%	16.1%
Osceola	15.2	14.9	-0.3	1,427	1,380	-3.3	1,997	2,257	13.0	19.8%	22.3%
Oscoda	20.1	21.2	1.1	744	726	-2.4	952	1,063	11.7	21.6%	23.6%
Otsego	13.6	14.3	0.6	1,683	1,720	2.2	2,078	2,387	14.9	18.9%	21.3%
Ottawa	12.5	11.7	-0.9	16,461	14,981	-9.0	10,494	13,530	28.9	9.3%	11.0%
Presque Isle	15.3	15.3	0.0	955	943	-1.3	840	930	10.7	11.9%	13.3%
Roscommon	14.2	15.0	0.9	1,440	1,506	4.6	2,752	3,076	11.8	22.2%	24.5%
Saginaw	12.5	12.2	-0.4	11,849	11,554	-2.5	20,595	23,797	15.5	21.3%	23.7%
Saint Clair	17.6	14.6	-3.0	14,591	11,849	-18.8	13,174	14,703	11.6	16.5%	18.2%
Saint Joseph	14.9	13.4	-1.5	4,312	3,724	-13.6	4,964	5,619	13.2	18.4%	20.6%
Sanilac	17.2	15.7	-1.6	3,583	3,035	-15.3	3,717	4,051	9.0	19.5%	21.1%
Schoolcraft	12.3	12.9	0.6	487	511	4.9	642	677	5.5	16.5%	16.8%
Shiawassee	14.8	13.7	-1.1	5,159	4,640	-10.1	5,207	6,025	15.7	16.3%	18.6%
Tuscola	15.8	14.7	-1.1	4,367	3,950	-9.6	3,772	4,425	17.3	16.1%	18.5%
Van Buren	12.4	11.7	-0.6	4,885	4,560	-6.6	6,601	7,605	15.2	19.1%	21.5%
Washtenaw	9.2	9.1	-0.2	16,817	16,458	-2.1	17,338	22,559	30.1	9.4%	11.5%
Wayne	17.4	15.5	-1.8	152,183	136,165	-10.5	212,382	258,297	21.6	22.7%	27.1%
Wexford	17.9	16.2	-1.7	2,573	2,190	-14.9	3,349	3,761	12.3	23.7%	25.4%

FACT

Low- and middle-income taxpayers should remember to file for the earned income and child tax credits when they do their taxes. A family with two children can receive an earned income credit of up to \$5,036 for Tax Year 2010.

¹In some cases the Michigan number is slightly different from the county total.

² Population figures based on U.S. Census Bureau county estimates from July of the previous year.

Data sources: Unemployment: Bureau of Labor Statistics, Local Area Unemployment Statistics; Public Assistance: Michigan Department of Human Services.

Family Independence Program (Cash Assistance)			Child Day Care				Medicaid						
Average Number of Families Receiving Cash Assistance Per Month ³			Percent of Population Receiving Assistance ²		Average Number of Children Receiving Care Per Month		Average Payment Per Child		Average Number of Persons Eligible for Medicaid ONLY (Excludes FIP & SSI Recipients)			Percent of Population Eligible for Medicaid (Includes FIP & SSI Recipients) ²	
Qtr 3 2009	Qtr 3 2010	% change	Qtr 3 2009	Qtr 3 2010	Qtr 3 2009	Qtr 3 2010	Qtr 3 2009	Qtr 3 2010	Qtr 3 2009	Qtr 3 2010	% change	Qtr 3 2009	Qtr 3 2010
155	157	0.9	1.6%	1.7%	87	72	\$242	\$232	3,492	3,714	6.4	18.0%	19.5%
195	213	8.9	0.7%	0.8%	270	231	\$255	\$247	8,013	8,357	4.3	14.3%	15.2%
134	174	29.9	1.1%	1.4%	323	289	\$280	\$322	5,089	5,207	2.3	21.1%	22.2%
178	169	-5.1	1.0%	1.0%	177	154	\$269	\$290	6,926	7,041	1.7	20.1%	20.5%
66	76	14.1	0.7%	0.9%	103	96	\$230	\$261	3,545	3,668	3.5	16.7%	17.9%
286	267	-6.5	0.9%	0.8%	368	325	\$289	\$300	9,985	10,473	4.9	14.4%	15.3%
54	58	8.1	1.0%	1.0%	95	84	\$223	\$271	2,466	2,703	9.6	17.9%	20.9%
733	850	16.0	1.2%	1.4%	580	594	\$342	\$318	16,256	17,284	6.3	13.0%	14.3%
217	190	-12.3	0.9%	0.7%	287	196	\$285	\$299	11,041	11,602	5.1	20.6%	21.8%
40	46	15.8	1.0%	1.2%	44	36	\$259	\$297	1,838	1,832	-0.3	21.9%	22.6%
3,139	3,425	9.1	4.9%	5.4%	2,222	1,979	\$304	\$302	28,912	29,777	3.0	24.5%	25.8%
277	325	17.3	1.4%	1.7%	254	259	\$295	\$347	9,256	9,668	4.4	22.5%	24.2%
3,762	4,645	23.5	0.8%	1.0%	3,539	3,246	\$402	\$367	98,515	110,013	11.7	9.9%	11.7%
271	298	9.7	2.8%	3.1%	228	227	\$317	\$326	6,193	6,253	1.0	27.4%	28.2%
153	180	17.6	2.0%	2.2%	209	155	\$292	\$268	4,257	4,374	2.7	25.2%	26.4%
25	26	4.0	1.1%	1.3%	13	7	\$227	\$232	964	1,006	4.3	17.8%	18.9%
102	108	6.2	1.1%	1.2%	115	141	\$283	\$277	4,164	4,367	4.9	21.8%	23.7%
42	39	-7.9	1.1%	1.1%	37	30	\$205	\$247	1,674	1,711	2.2	22.7%	23.8%
109	131	20.9	1.1%	1.4%	249	237	\$294	\$309	4,692	4,776	1.8	22.6%	23.7%
546	515	-5.7	0.5%	0.5%	862	860	\$312	\$331	27,443	28,809	5.0	11.6%	12.4%
36	35	-2.8	0.5%	0.5%	34	23	\$254	\$277	1,763	1,770	0.4	15.5%	16.1%
154	173	12.3	1.4%	1.6%	156	138	\$258	\$256	4,541	4,609	1.5	22.5%	23.5%
2,573	2,500	-2.8	3.5%	3.4%	2,980	2,628	\$315	\$307	30,730	32,638	6.2	22.1%	23.6%
917	1,075	17.3	1.5%	1.7%	875	736	\$316	\$293	25,008	25,975	3.9	17.6%	18.9%
417	388	-7.1	1.7%	1.6%	338	368	\$349	\$356	12,187	12,823	5.2	22.8%	24.4%
190	220	15.4	1.2%	1.4%	253	209	\$289	\$306	7,996	8,220	2.8	21.5%	23.0%
50	32	-36.0	1.6%	1.0%	33	29	\$227	\$231	1,318	1,338	1.5	20.8%	20.5%
391	469	20.0	1.4%	1.7%	397	332	\$275	\$291	10,770	11,004	2.2	18.5%	19.6%
266	314	17.9	1.2%	1.5%	305	268	\$283	\$300	9,371	9,780	4.4	19.5%	21.2%
510	505	-1.0	1.6%	1.6%	437	366	\$344	\$332	15,668	16,491	5.3	23.8%	25.2%
1,178	1,207	2.4	0.9%	0.9%	1,521	1,362	\$392	\$352	28,216	30,722	8.9	10.1%	11.1%
29,045	32,294	11.2	4.2%	4.7%	23,651	17,191	\$357	\$349	319,425	338,684	6.0	24.1%	26.2%
178	237	33.2	1.3%	1.9%	278	231	\$268	\$323	6,702	6,679	-0.4	25.7%	26.3%

FACT

Tax filers who claim the earned income credit should avoid using paid tax services and taking out "rapid refund" loans. These services are predatory and can cost filers up to 30 percent of their refund. Instead, they can file online for free using I-CAN E-File, found at www.MichiganEIC.org. They can also call 2-1-1 to find out about free tax preparation in their communities.

¹ In some cases the Michigan number is slightly different from the county total.

² Population figures based on U.S. Census Bureau county estimates from July of the previous year.

³ Includes both regular and extended FIP.

Data sources: Unemployment: Bureau of Labor Statistics, Local Area Unemployment Statistics; Public Assistance: Michigan Department of Human Services.

Employment Trends by Selected Industries in Michigan
(data not seasonally adjusted, rounded to the nearest hundred)

Industry	Avg 2009 Qtr 3	Avg 2010 Qtr 3	% Change	Industry	Avg 2009 Qtr 3	Avg 2010 Qtr 3	% Change
TOTAL NONFARM	3,836,200	3,843,900	0.2	Wholesale Electronic Markets and Agents and Brokers	22,600	23,300	3.1
TOTAL PRIVATE	3,228,400	3,248,400	0.6	•Retail Trade	451,400	447,400	-0.9
GOODS PRODUCING	596,500	603,900	1.2	Motor Vehicle and Parts Dealers	50,500	49,400	-2.2
SERVICE-PROVIDING	3,239,700	3,240,000	0.0	Building Material and Garden Equip. and Supplies Dealers	40,600	38,800	-4.4
Natural Resources and Mining	7,200	7,700	6.9	Food and Beverage Stores	78,400	77,300	-1.4
Construction	134,900	128,600	-4.7	Health and Personal Care	31,100	30,000	-3.5
Construction of Buildings	28,600	26,000	-9.1	Gasoline Stations	23,500	22,700	-3.4
Heavy and Civil Engineering	16,800	16,900	0.6	Clothing and Clothing Accessories	36,100	37,200	3.0
Specialty Trade Contractors	89,500	85,700	-4.2	Sporting Goods, Hobby, Book, and Music Stores	20,400	19,700	-3.4
Manufacturing	454,400	467,600	2.9	General Merchandise Stores	109,700	107,400	-2.1
•Durable Goods	331,600	343,600	3.6	Miscellaneous Store Retail	23,200	22,100	-4.7
Nonmetallic Mineral Products	11,500	10,900	-5.2	•Transportation & Warehousing & Utilities	112,400	109,500	-2.6
Primary Metal Manufacturing	15,700	16,500	5.1	Air Transportation	12,600	12,100	-4.0
Fabricated Metal Product	56,800	62,600	10.2	Rail Transportation	4,300	4,300	0.0
Metalworking Machinery Manuf.	26,200	26,700	1.9	Truck Transportation	33,800	34,100	0.9
Computer and Electronic Products	17,700	17,200	-2.8	Warehousing and Storage	11,900	10,900	-8.4
Motor Vehicle Manufacturing	35,400	38,400	8.5	Information	55,200	52,600	-4.7
Motor Vehicle Parts Manufacturing	78,400	83,800	6.9	Publishing Industries	16,600	15,200	-8.4
Furniture and Related Products	19,600	18,100	-7.7	Telecommunications	21,800	18,900	-13.3
•Non-Durable Goods	122,800	124,000	1.0	Financial Activities	191,100	183,000	-4.2
Food Manufacturing	34,900	36,000	3.2	Finance and Insurance	141,000	136,100	-3.5
Printing and Related Support Activities	14,600	13,800	-5.5	Real Estate	35,100	32,200	-8.3
Chemical Manufacturing	25,200	24,300	-3.6	Professional & Business Services	497,800	521,100	4.7
Plastics and Rubber Products	26,400	26,700	1.1	Legal Services	27,400	26,900	-1.8
Trade Transportation & Utilities	714,600	710,600	-0.6	Accounting, Tax Preparation, Bookkeeping & Payroll Services	26,400	25,100	-4.9
•Wholesale Trade	150,800	153,600	1.9	Architectural Engineering	54,800	56,800	3.6
Merchant Wholesalers Durable Goods	81,700	84,100	2.9				
Merchant Wholesalers Nondurable Goods	46,500	46,200	-0.6				

Note: Industry details and subtotals may not sum to totals due to rounding.

Source: Department of Labor and Economic Growth/Office of Labor Market Information, Current Employment Statistics Section - (800) 225-3732

Employment Trends by Selected Industries in Michigan
(data not seasonally adjusted, rounded to the nearest hundred)

Industry	Avg 2009 Qtr 3	Avg 2010 Qtr 3	% Change	Industry	Avg 2009 Qtr 3	Avg 2010 Qtr 3	% Change
Computer Systems Design	36,300	36,300	0.0	Government	607,800	595,500	-2.0
Management, Scientific and Technical Consulting Services	18,800	18,300	-2.7	•Federal Government	53,600	55,400	3.4
Scientific Research and Development Services	18,200	17,600	-3.3	U.S. Postal Service	24,500	22,700	-7.3
Advertising and Related	12,800	12,500	-2.3	•State Government	168,800	168,100	-0.4
Management of Companies	50,900	51,100	0.4	State Government Educational Services	96,500	97,900	1.5
Administrative & Support Services	231,500	253,900	9.7	State Government Hospital Services	16,800	17,100	1.8
Employment Services	116,100	137,000	18.0	•Local Government	385,400	372,100	-3.5
Educational and Health Services	604,800	612,800	1.3	Local Government Educational Services	197,400	191,600	-2.9
•Educational Services	74,400	77,500	4.2	Local Government Hospitals	13,300	13,400	0.8
(see also Government)				Local Government Elementary and Secondary Schools	174,700	166,800	-4.5
•Health Care & Social Assistance	530,400	535,400	0.9	Local Government Junior Colleges	22,000	24,300	10.5
Ambulatory Health Care Services	181,100	183,700	1.4				
Offices of Physicians	69,200	70,200	1.4				
Outpatient Care Centers	16,000	16,200	1.3				
Home Health Care Service	32,400	33,600	3.7				
Hospitals	190,700	190,500	-0.1				
Nursing and Residential Care Facilities	98,500	97,700	-0.8				
Social Assistance	60,100	63,400	5.5				
Individual and Family Services	27,100	27,200	0.4				
Leisure and Hospitality	399,300	397,600	-0.4				
Performing Arts Spectator Activities	9,300	8,600	-7.5				
Amusement, Gambling & Recreation	53,800	51,000	-5.2				
Accommodation	35,300	38,200	8.2				
Food Services and Drinking	296,400	296,400	0.0				
Other Services	169,100	166,800	-1.4				
Repair and Maintenance	34,400	34,000	-1.2				
Personal and Laundry Services	37,100	35,200	-5.1				
Religious Grantmaking Civic Professional	97,500	97,600	0.1				

VISIT OUR WEBSITE FOR MORE INFORMATION!

The "Work and Wages" section of the Michigan League for Human Services website has information on Adult Learning, Low-Wage Jobs, and Unemployment. It also includes back issues of the Economic Security Bulletin. Go to www.MiLHS.org and click the "Policy" tab at the top, then "Work and Wages"

Note: Industry details and subtotals may not sum to totals due to rounding.

Source: Department of Labor and Economic Growth/Office of Labor Market Information, Current Employment Statistics Section - (800) 225-3732



Michigan League for Human Services

1223 Turner Street, Suite G-1
 Lansing, MI 48906
 (517) 487-5436 — Fax (517) 371-4546
 Web site: www.milhs.org

A United Way Agency

Percentage Change in Michigan Counties With Largest Increases
 Third Quarter 2009 — Third Quarter 2010

Percentage Point Change in Unemployment Rate	Percent Change in Food Assistance Households	Percent Change in FIP Cash Assistance Families
Ontonagon 5.2	Oakland 38.1	Mackinac 46.9
Benzie 2.1	Livingston 35.8	Wexford 33.2
Luce 1.7	Isabella 34.8	Leelanau 31.3
Gogebic 1.2	Houghton 32.2	Livingston 30.5
Leelanau 1.2	Leelanau 31.2	Mason 29.9
Emmet 1.2	Macomb 30.5	Macomb 26.2
Oscoda 1.1	Washtenaw 30.1	Cheboygan 24.2
Chippewa 1.1	Ottawa 28.9	Oakland 23.5
Houghton 1.0	Marquette 28.8	Lapeer 21.3
Roscommon 0.9	Ingham 27.5	Otsego 20.9

Note: Counties in bold have population of 100,000 or more.

Sources: Unemployment: Bureau of Labor Statistics, Local Area Unemployment Statistics; Public Assistance: Michigan Department of Human Services