

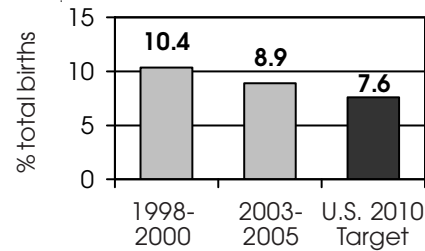
# St. Joseph



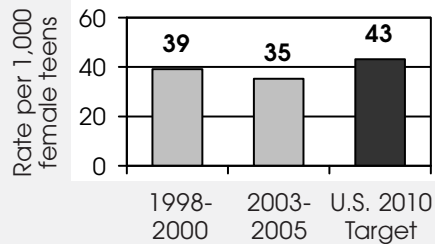
Average wage per job	\$33,557
Average cost of full-time child care (monthly-2007)	\$402
- percent of average wage	14.4%
Unemployment (2006)	6.5%

## Healthy Children & Youth 2010

### Preterm Births (less than 37 weeks gestation)



### Teen Pregnancy Ages 15-17



In 2000, Michigan and many of its counties had better teen pregnancy rates than the national Healthy People 2010 target, but this is not the case for preterm births where the Michigan rate is significantly higher than the target.

Source: Vital Records and Health Data Development Section, Michigan Department of Community Health

## Child Health

	1998-2000 Avg.		2003-2005 Avg.	
	Number	Rate	Number	Rate
Lead poisoning in children, ages 1-6				
-tested	110	2.0%	84	1.6%
-poisoned (% of tested)	1	*	0	*
Children, ages 0-4, hospitalized for asthma (rate per 10,000)	(3-Yr. Total)		(3-Yr. Total)	
	37	27.8	35	25.5
Children, ages 0-18 insured by...	2000		2006	
-Medicaid <sup>2</sup>	4,031	22.3%	6,960	39.6%
-MIChild (monthly avg.)	115	0.6%	224	1.3%
Fully immunized toddlers, ages 19-35 months (for the series 4:3:1:3:3)	NA	NA	1,105	76.8%

## Background

### Total Live Births

1998-00 Avg.	2003-05 Avg.
922	956

### Diversity of Children

	2000		2005	
Non-Hispanic				
- White	15,270	88.9%	14,417	85.8%
- African American	701	4.1%	705	4.2%
- American Indian/Alaskan Native	104	0.6%	105	0.6%
- Asian/Pacific Islander/Other	106	0.6%	103	0.6%
Hispanic (any race)	996	5.8%	1,469	8.7%
Total child population, ages 0-17 <sup>1</sup>	17,177	100.0%	16,799	100.0%

### Economic Security

	Number	Rate	MI
Children receiving... <sup>2</sup>			
- subsidized child care, ages 0-12	506	4.3%	6.4%
- FIP cash assistance <sup>3</sup>	782	4.4%	6.4%
- food assistance (food stamps)	3,524	20.0%	20.2%
Children with support owed	3,624	19.8%	18.9%
- receiving none	411	11.3%	26.7%
- receiving less than 70% of amount	1,607	44.3%	58.2%

### Children with Special Needs

Students in Special Education (2006-07 school year)	1,686	14.3%	14.7%
Children receiving Supplemental Security Income (rate per 1,000) <sup>2</sup>	191	11.4	15.2
Infants born with a birth defect <sup>4</sup> (2002-2004 avg.)	33	3.6%	6.2%

Note: Percentages reflect percent of population unless otherwise noted.

<sup>1</sup>Due to rounding error not all total to 100%.

<sup>2</sup>These data represent a single month-December.

<sup>3</sup> Family Independence Program

<sup>4</sup> Variation in these rates may result from reporting bias.

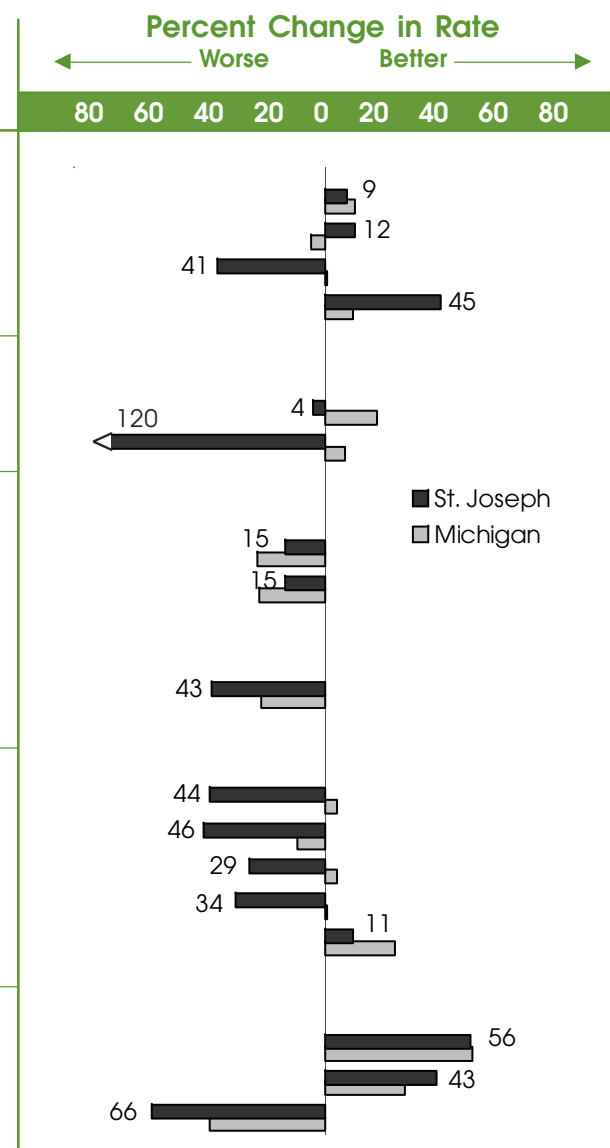
\* Sometimes a rate could not be calculated because of low incidence of events or unavailable data.

N/A not available.

See Data Notes and Definitions for details.

## Trends in Child Well-Being 2000—2005<sup>1</sup>

	2000		2005			
	Number	Rate	Number	Rate	Rank <sup>2</sup>	MI Rate
<b>Child Health</b>						
Less than adequate prenatal care	271	29.4%	256	26.8%	68 of 83	21.9%
Low-birthweight babies	66	7.2%	61	6.3%	17 of 82	8.3%
Infant mortality (per 1,000)	4	4.7	6	6.6	21 of 54	8.0
Child deaths, ages 1-14 (per 100,000)	5	37.6	3	20.8	13 of 38	20.6
<b>Adolescence</b>						
Births to teens, ages 15-19 (per 1,000)	133	57.6	132	59.9	81 of 82	33.6
Teen deaths (per 100,000)	2	49.0	5	107.8	42 of 47	58.8
<b>Economic Security</b>						
<b>2004</b>						
Children in poverty						
—ages 0-17	2,502	15.0%	2,866	17.3%	39 of 83	17.3%
—ages 5-17	1,607	13.5%	1,828	15.5%	43 of 83	15.0%
<b>2000-01</b>						
<b>2006-07</b>						
Students receiving free/reduced priced school lunches <sup>3</sup>	3,776	32.5%	5,480	46.6%	53 of 82	38.1%
<b>Child Safety (per 1,000)</b>						
<b>2000</b>						
<b>2006</b>						
Children in investigated families	1,008	58.7	1,419	84.5	60 of 83	62.6
Confirmed victims of abuse or neglect	177	10.3	253	15.1	55 of 83	11.4
Children in out-of-home care	154	9.0	195	11.6	72 of 79	7.5
—for abuse or neglect	139	8.1	182	10.8	71 of 76	6.6
—for delinquency	15	0.9	13	0.8	19 of 39	0.9
<b>Education (% not meeting Math standards)</b>						
<b>2002-03</b>						
<b>2006-07</b>						
Fourth graders	278	32.1%	114	14.2%	54 of 82	15.4%
Eighth graders	406	47.0%	245	26.9%	33 of 82	31.9%
Seniors (Class of 2002 vs. 2006)	186	26.5%	362	43.9%	36 of 82	47.6%



<sup>1</sup>Trends are calculated for 2000 vs. 2005 unless noted. For Child Health and Adolescence indicators 2000 is actually a three-year annual average 1998-2000, and 2005 is 2003-05 average.

<sup>2</sup>A ranking of 1 means a county has the "best" rate compared to other counties in the state.

<sup>3</sup>Family income for eligible students is below 185 percent poverty level.

\* Sometimes a rate could not be calculated because of low incidence of events or unavailable data.

N/A not available.

Missing bars indicate no change or a rate could not be calculated; a "0" reflects no change.

Percentage change is calculated with unrounded rates.