

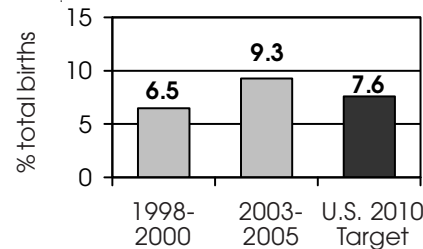
# Luce



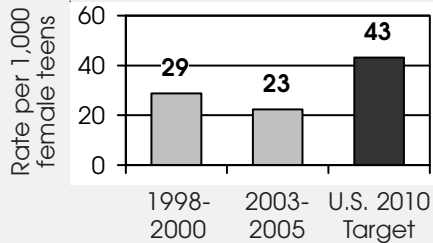
Average wage per job	\$28,654
Average cost of full-time child care (monthly-2007)	\$466
- percent of average wage	19.5%
Unemployment (2006)	7.5%

## Healthy Children & Youth 2010

### Preterm Births (less than 37 weeks gestation)



### Teen Pregnancy Ages 15-17



In 2000, Michigan and many of its counties had better teen pregnancy rates than the national Healthy People 2010 target, but this is not the case for preterm births where the Michigan rate is significantly higher than the target.

Source: Vital Records and Health Data Development Section, Michigan Department of Community Health

## Child Health

	1998-2000 Avg.		2003-2005 Avg.	
	Number	Rate	Number	Rate
Lead poisoning in children, ages 1-6				
-tested	68	15.5%	52	14.2%
-poisoned (% of tested)	1	*	0	*
Children, ages 0-4, hospitalized for asthma (rate per 10,000)	<b>(3-Yr. Total)</b>		<b>(3-Yr. Total)</b>	
	0	*	5	*
Children, ages 0-18 insured by...	<b>2000</b>		<b>2006</b>	
-Medicaid <sup>2</sup>	669	42.1%	623	44.9%
-MIChild (monthly avg.)	15	0.9%	36	2.6%
Fully immunized toddlers, ages 19-35 months (for the series 4:3:1:3:3)	NA	NA	73	76.0%

## Background

### Total Live Births

1998-00 Avg.	2003-05 Avg.
61	65

### Diversity of Children

	2000		2005	
Non-Hispanic				
- White	1,305	88.1%	1,172	89.0%
- African American	18	1.2%	24	1.8%
- American Indian/Alaskan Native	136	9.2%	103	7.8%
- Asian/Pacific Islander/Other	4	0.3%	7	0.5%
Hispanic (any race)	19	1.3%	11	0.8%
Total child population, ages 0-17 <sup>1</sup>	1,482	100.0%	1,317	100.0%

### Economic Security

	Number	Rate	MI
Children receiving... <sup>2</sup>			
- subsidized child care, ages 0-12	44	4.9%	6.4%
- FIP cash assistance <sup>3</sup>	54	3.9%	6.4%
- food assistance (food stamps)	311	22.4%	20.2%
Children with support owed	301	20.5%	18.9%
- receiving none	32	10.8%	26.7%
- receiving less than 70% of amount	108	35.8%	58.2%

### Children with Special Needs

Students in Special Education (2006-07 school year)	202	18.5%	14.7%
Children receiving Supplemental Security Income (rate per 1,000) <sup>2</sup>	25	19.0	15.2
Infants born with a birth defect <sup>4</sup> (2002-2004 avg.)	5	8.3%	6.2%

Note: Percentages reflect percent of population unless otherwise noted.

<sup>1</sup>Due to rounding error not all total to 100%.

<sup>2</sup>These data represent a single month-December.

<sup>3</sup> Family Independence Program

<sup>4</sup> Variation in these rates may result from reporting bias.

\* Sometimes a rate could not be calculated because of low incidence of events or unavailable data.

N/A not available.

See Data Notes and Definitions for details.

