

## Focus on Young Children



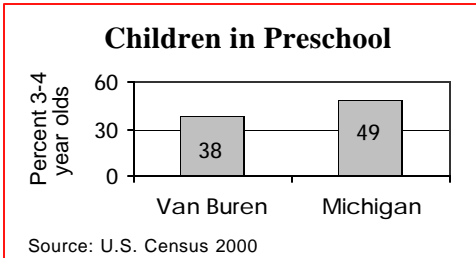
### Live Births

	1990	1996	2002
	1,159	1,027	1,013

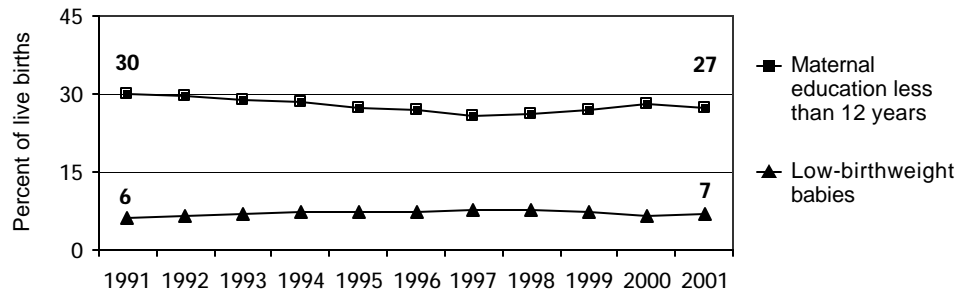
	Number	Percent	Michigan
No listed paternity (2002)	97	9.6%	13.6%
Birth defects (1999-2001)	48	4.6%	6.3%
Lead poisoning in toddlers, ages 1-2			
– tested	366	17.9%	19.2%
– poisoned (% of tested)	6	1.6%	3.3%

### Child Care & Early Education

	Infants	Toddlers	Preschool	School-age
Monthly costs (full-time/one child - 2004)	\$507	\$461	\$453	\$423
– percent average wage per job	20.4%	18.5%	18.2%	17.0%
Children in subsidized child care				
– ages 0-30 mos.	859			
– ages 31 mos.-5 yrs.	1,001			
– ages 6-12	949			
Total (includes children over age 12)	2,836			



### Infants at Risk: 1990-2002 (three-year rolling averages)



Source: Michigan Department of Community Health, Vital Records and Health Data Development Section

## Background

### Population

	2000	2003
Total population	76,355	78,210
Child population		
– ages 0-17	21,300	20,799
– ages 0-4	5,163	5,222
– ages 5-9	5,826	5,433
– ages 10-14	6,433	6,269
– ages 15-19	6,021	6,154

### Economic Climate

Average wage per job (2002)	\$29,827
Unemployment	7.9%
Percent change in Food Assistance Program Participation (2001 vs. 2003)	31.0%

### Economic Security

	Number	Rate <sup>1</sup>	Michigan <sup>1</sup>
Children with child support order (April 04)	8,691	41.5%	38.5%
– average amount received per child	\$166	—	\$180
– percent non-custodial parents making no payment in previous six months	—	47.5%	51.5%
Children receiving FIP cash assistance <sup>2</sup>	1,227	5.8%	6.0%
Children in Food Assistance Program <sup>3</sup>	4,250	19.2%	14.8%

### Children with Special Needs

Students in Special Education	2,188	12.2%	14.3%
Children receiving Supplemental Security Income (rate per 1,000)	239	11.4	12.7

### Health Care

Children, ages 0-18, insured by...			
– Medicaid	7,484	33.8%	27.5%
– MICHild	308	1.4%	1.3%
Children, ages 1-14, hospitalized for asthma <sup>4</sup> (rate per 10,000)	23	14.7	25.4

### Juvenile Justice — 2002

Age 10-17 (rates per 1,000)			
Violent crime arrests	52	5.1	3.3
Property crime arrests	252	24.6	19.9

<sup>1</sup> All percentages are percent of all children except for Students in Special Education.

<sup>2</sup> Family Independence Program.

<sup>3</sup> Federal Food Stamp Program.

<sup>4</sup> Rate is reported for the three-year period 2000-2002 only for counties with a total number over 19.

\* Rate not calculated because of low incidence of events or unavailable data.

Note: All data are from 2003 unless otherwise noted.

## Trends in Child Well-Being

	Percent Change in Rate					Base year		Recent year			
	Worse		0	Better		Number	Rate	Number	Rate	Rank <sup>1</sup>	
	80	60	40	20	0	20	40	60	80		
<b>Economic Security 1995 vs. 2000</b>											
Children in poverty.											
– ages 0-17						36	5,387	24.6%	3,276	16.1%	52 of 83
– ages 5-17						47	3,857	24.0%	2,073	12.8%	44 of 83
Students receiving free/reduced priced school lunches (1995-96 vs. 2003-04)						16	6,197	36.4%	7,589	42.4%	53 of 82
<b>Child Health Avg 1994-96 vs. 2000-02</b>											
Less than adequate prenatal care						19	329	31.6%	267	25.6%	61 of 82
Low-birthweight babies						3	77	7.2%	73	7.0%	45 of 83
Infant mortality (per 1,000)						23	5	4.7	6	5.8	8 of 55
Child deaths, ages 1-14 (per 100,000)						51	6	37.4	3	18.5	12 of 40
<b>Child Safety (per 1,000) FY1995 vs. FY2003</b>											
Children in investigated families						10	1,689	78.4	1,479	70.6	42 of 83
Confirmed victims of abuse or neglect						9	343	15.9	305	14.6	60 of 82
Children in out-of-home care						5	185	8.6	172	8.2	60 of 80
– abuse or neglect						4	131	6.1	122	5.8	54 of 79
– delinquency						5	54	2.5	50	2.4	44 of 51
<b>Adolescence Avg 1994-96 vs. 2000-02</b>											
Births to teens, ages 15-17 (per 1,000)						34	67	38.8	47	25.5	69 of 81
Deaths by accident, homicide, suicide for teens ages 15-19 (per 100,000)						61	4	75.0	7	120.7	42 of 43
High school dropouts (1995-96 vs. 2001-02)						60	373	8.2%	162	3.2%	46 of 79
<b>Education 2001-02 vs. 2003-04</b> (Students not meeting proficiency standards in math)											
Fourth graders						28	399	33.9%	298	24.3%	43 of 82
Eighth graders						28	618	46.7%	459	33.4%	41 of 82
Class of 2001 vs. class of 2003						15	311	31.9%	397	36.6%	36 of 82

<sup>1</sup> A ranking of 1 means a county has the "best" rate compared to other counties in the state.

Missing bars indicate no change or a rate could not be calculated. Percentage change is calculated with unrounded rates.

\* Sometimes a rate could not be calculated because of low incidence of events or unavailable data.