

## Focus on Young Children



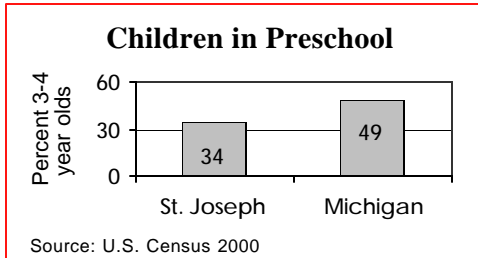
### Live Births

1990	1996	2002
931	873	888

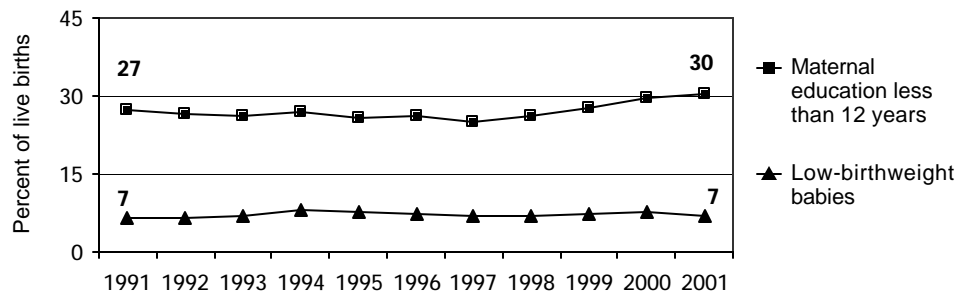
	Number	Percent	Michigan
No listed paternity (2002)	97	10.9%	13.6%
Birth defects (1999-2001)	33	3.5%	6.3%
Lead poisoning in toddlers, ages 1-2			
– tested	269	15.6%	19.2%
– poisoned (% of tested)	6	2.2%	3.3%

### Child Care & Early Education

	Infants	Toddlers	Preschool	School-age
Monthly costs (full-time/one child - 2004)	\$414	\$398	\$390	\$346
– percent average wage per job	15.7%	15.1%	14.8%	13.1%
Children in subsidized child care				
– ages 0-30 mos.	443			
– ages 31 mos.-5 yrs.	568			
– ages 6-12	570			
Total (includes children over age 12)	1,594			



### Infants at Risk: 1990-2002 (three-year rolling averages)



Source: Michigan Department of Community Health, Vital Records and Health Data Development Section

## Background

### Population

	2000	2003
Total population	62,541	62,864
Child population		
– ages 0-17	17,069	16,615
– ages 0-4	4,463	4,478
– ages 5-9	4,630	4,435
– ages 10-14	4,942	4,776
– ages 15-19	4,824	4,700

### Economic Climate

Average wage per job (2002)	\$31,672
Unemployment	7.6%
Percent change in Food Assistance Program Participation (2001 vs. 2003)	47.7%

### Economic Security

	Number	Rate <sup>1</sup>	Michigan <sup>1</sup>
Children with child support order (April 04)	6,522	38.8%	38.5%
– average amount received per child	\$181	—	\$180
– percent non-custodial parents making no payment in previous six months	—	41.1%	51.5%
Children receiving FIP cash assistance <sup>2</sup>	660	3.9%	6.0%
Children in Food Assistance Program <sup>3</sup>	2,697	15.2%	14.8%

### Children with Special Needs

Students in Special Education	1,614	13.8%	14.3%
Children receiving Supplemental Security Income (rate per 1,000)	143	8.4	12.7

### Health Care

Children, ages 0-18, insured by...			
– Medicaid	5,531	31.2%	27.5%
– MICHild	281	1.6%	1.3%
Children, ages 1-14, hospitalized for asthma <sup>4</sup> (rate per 10,000)	12	9.5	25.4

### Juvenile Justice — 2002

Age 10-17 (rates per 1,000)			
Violent crime arrests	22	2.8	3.3
Property crime arrests	184	23.5	19.9

<sup>1</sup> All percentages are percent of all children except for Students in Special Education.

<sup>2</sup> Family Independence Program.

<sup>3</sup> Federal Food Stamp Program.

<sup>4</sup> Rate is reported for the three-year period 2000-2002 only for counties with a total number over 19.

\* Rate not calculated because of low incidence of events or unavailable data.

Note: All data are from 2003 unless otherwise noted.

## Trends in Child Well-Being

	Percent Change in Rate					Base year		Recent year		
	Worse		0	Better		Number	Rate	Number	Rate	Rank <sup>1</sup>
	80	60	40	20	0	20	40	60	80	
<b>Economic Security 1995 vs. 2000</b>										
Children in poverty.						2,843	16.2%	2,502	15.0%	39 of 83
– ages 0-17						1,854	14.5%	1,607	12.7%	43 of 83
– ages 5-17										
Students receiving free/reduced priced school lunches (1995-96 vs. 2003-04)	45					3,177	26.8%	4,514	38.8%	38 of 82
<b>Child Health Avg 1994-96 vs. 2000-02</b>										
Less than adequate prenatal care	29					202	21.5%	261	27.8%	68 of 82
Low-birthweight babies	5					65	7.8%	70	7.4%	60 of 83
Infant mortality (per 1,000)	41					6	6.5	9	9.2	42 of 55
Child deaths, ages 1-14 (per 100,000)	47					4	27.0	4	39.7	37 of 40
<b>Child Safety (per 1,000) FY1995 vs. FY2003</b>										
Children in investigated families	36					1,011	58.3	1,331	79.3	52 of 83
Confirmed victims of abuse or neglect	15					250	14.4	206	12.3	49 of 82
Children in out-of-home care	18					113	6.5	130	7.7	57 of 80
– abuse or neglect	31					96	5.5	122	7.3	62 of 79
– delinquency	51					17	1.0	8	0.5	7 of 51
<b>Adolescence Avg 1994-96 vs. 2000-02</b>										
Births to teens, ages 15-17 (per 1,000)	37					48	35.5	32	22.3	62 of 81
Deaths by accident, homicide, suicide for teens ages 15-19 (per 100,000)	30					4	100.8	3	70.3	29 of 43
High school dropouts (1995-96 vs. 2001-02)	10					123	3.9%	146	4.3%	66 of 79
<b>Education 2001-02 vs. 2003-04</b> (Students not meeting proficiency standards in math)										
Fourth graders	38					279	32.1%	155	20.0%	23 of 82
Eighth graders	31					406	47.0%	294	32.5%	34 of 82
Class of 2001 vs. class of 2003	38					172	25.2%	272	34.7%	31 of 82

<sup>1</sup> A ranking of 1 means a county has the "best" rate compared to other counties in the state.

Missing bars indicate no change or a rate could not be calculated. Percentage change is calculated with unrounded rates.

\* Sometimes a rate could not be calculated because of low incidence of events or unavailable data.