

Focus on Young Children



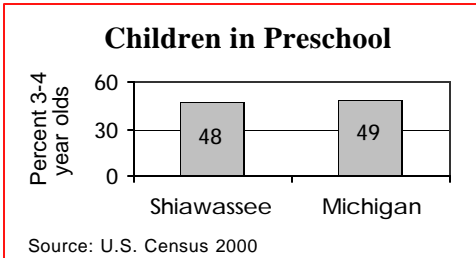
Live Births

	1990	1996	2002
	1,063	885	894

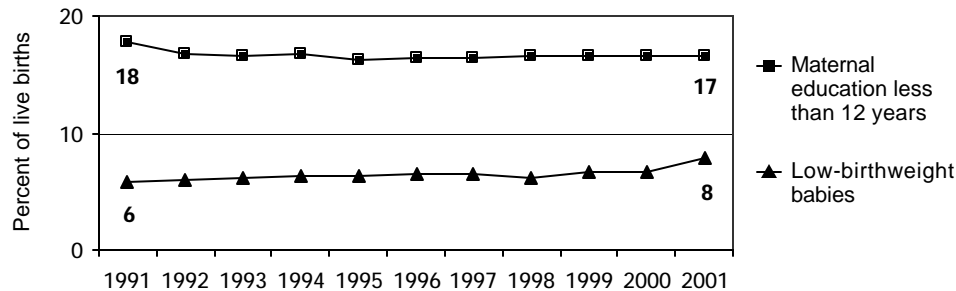
	Number	Percent	Michigan
No listed paternity (2002)	74	8.3%	13.6%
Birth defects (1999-2001)	39	4.2%	6.3%
Lead poisoning in toddlers, ages 1-2			
– tested	238	12.3%	19.2%
– poisoned (% of tested)	1	0.4%	3.3%

Child Care & Early Education

	Infants	Toddlers	Preschool	School-age
Monthly costs (full-time/one child - 2004)	\$450	\$440	\$429	\$447
– percent average wage per job	20.5%	20.0%	19.5%	20.3%
Children in subsidized child care				
– ages 0-30 mos.	357			
– ages 31 mos.-5 yrs.	623			
– ages 6-12	599			
Total (includes children over age 12)	1,586			



Infants at Risk: 1990-2002 (three-year rolling averages)



Source: Michigan Department of Community Health, Vital Records and Health Data Development Section

Background

Population

	2000	2003
Total population	71,700	72,543
Child population		
– ages 0-17	19,014	18,398
– ages 0-4	4,799	4,487
– ages 5-9	5,381	5,000
– ages 10-14	5,534	5,552
– ages 15-19	5,246	5,296

Economic Climate

Average wage per job (2002)	\$26,402
Unemployment	8.1%
Percent change in Food Assistance Program Participation (2001 vs. 2003)	53.6%

Economic Security

	Number	Rate ¹	Michigan ¹
Children with child support order (April 04)	7,672	41.1%	38.5%
– average amount received per child	\$181	—	\$180
– percent non-custodial parents making no payment in previous six months	—	55.4%	51.5%
Children receiving FIP cash assistance ²	446	2.4%	6.0%
Children in Food Assistance Program ³	2,468	12.6%	14.8%

Children with Special Needs

Students in Special Education	1,950	13.4%	14.3%
Children receiving Supplemental Security Income (rate per 1,000)	184	9.8	12.7

Health Care

Children, ages 0-18, insured by...			
– Medicaid	5,072	25.8%	27.5%
– MICHild	400	2.0%	1.3%
Children, ages 1-14, hospitalized for asthma ⁴ (rate per 10,000)	26	18.3	25.4

Juvenile Justice — 2002

Ages 10-17 (rates per 1,000)

Violent crime arrests	16	1.8	3.3
Property crime arrests	86	9.6	19.9

¹ All percentages are percent of all children except for Students in Special Education.

² Family Independence Program.

³ Federal Food Stamp Program.

⁴ Rate is reported for the three-year period 2000-2002 only for counties with a total number over 19.

* Rate not calculated because of low incidence of events or unavailable data.

Note: All data are from 2003 unless otherwise noted.

Trends in Child Well-Being

	Percent Change in Rate					Base year		Recent year			
	Worse		0	Better		Number	Rate	Number	Rate	Rank ¹	
	80	60	40	20	0	20	40	60	80		
Economic Security 1995 vs. 2000											
Children in poverty.											
– ages 0-17						32	3,287	15.9%	2,067	11.1%	20 of 83
– ages 5-17						38	2,163	14.0%	1,304	9.1%	22 of 83
Students receiving free/reduced priced school lunches (1995-96 vs. 2003-04)						28	2,758	19.7%	3,671	25.3%	12 of 82
Child Health Avg 1994-96 vs. 2000-02											
Less than adequate prenatal care						0	134	14.6%	134	14.7%	9 of 82
Low-birthweight babies						88	58	6.4%	71	7.8%	70 of 83
Infant mortality (per 1,000)						23	4	4.3	7	8.0	32 of 55
Child deaths, ages 1-14 (per 100,000)						11	3	16.9	3	18.8	14 of 40
Child Safety (per 1,000) FY1995 vs. FY2003											
Children in investigated families						85	1,011	50.3	1,734	93.0	65 of 83
Confirmed victims of abuse or neglect						66	136	6.8	210	11.3	41 of 82
Children in out-of-home care						105	50	2.5	95	5.1	33 of 80
– abuse or neglect						123	45	2.2	93	5.0	43 of 79
– delinquency							5	*	2	*	* of 51
Adolescence Avg 1994-96 vs. 2000-02											
Births to teens, ages 15-17 (per 1,000)						12	39	23.5	34	20.6	57 of 81
Deaths by accident, homicide, suicide for teens ages 15-19 (per 100,000)						15	4	77.2	5	88.4	34 of 43
High school dropouts (1995-96 vs. 2001-02)						51	140	3.3%	218	5.1%	73 of 79
Education 2001-02 vs. 2003-04 (Students not meeting proficiency standards in math)											
Fourth graders						24	322	30.6%	244	23.3%	37 of 82
Eighth graders						15	454	42.2%	402	36.1%	54 of 82
Class of 2001 vs. class of 2003						36	259	29.3%	385	39.7%	49 of 82

¹ A ranking of 1 means a county has the "best" rate compared to other counties in the state.

Missing bars indicate no change or a rate could not be calculated. Percentage change is calculated with unrounded rates.

* Sometimes a rate could not be calculated because of low incidence of events or unavailable data.