

## Focus on Young Children



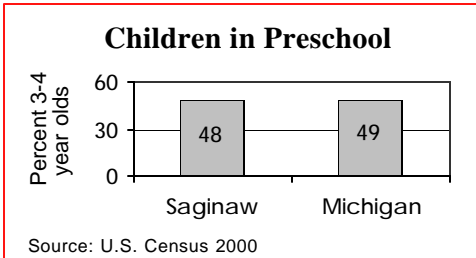
### Live Births

	1990	1996	2002
	3,702	2,782	2,652

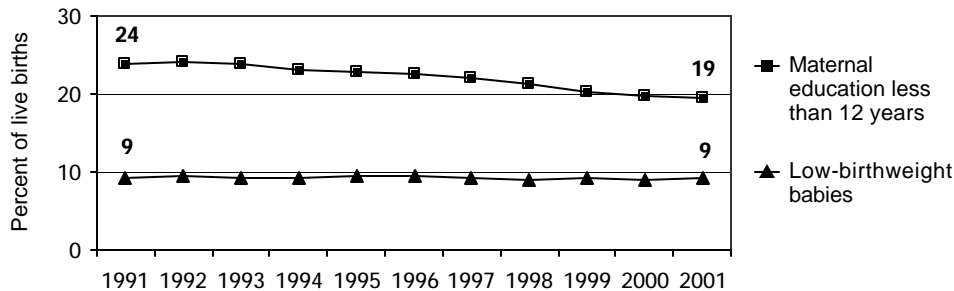
	Number	Percent	Michigan
No listed paternity (2002)	534	20.1%	13.6%
Birth defects (1999-2001)	236	8.3%	6.3%
Lead poisoning in toddlers, ages 1-2			
– tested	1,052	18.4%	19.2%
– poisoned (% of tested)	30	2.9%	3.3%

### Child Care & Early Education

	Infants	Toddlers	Preschool	School-age
Monthly costs (full-time/one child - 2004)	\$503	\$496	\$489	\$476
– percent average wage per job	17.4%	17.2%	16.9%	16.5%
Children in subsidized child care				
– ages 0-30 mos.	2,750			
– ages 31 mos.-5 yrs.	3,528			
– ages 6-12	4,351			
Total (includes children over age 12)	10,796			



### Infants at Risk: 1990-2002 (three-year rolling averages)



Source: Michigan Department of Community Health, Vital Records and Health Data Development Section

## Background

### Population

	2000	2003
Total population	209,945	209,327
Child population		
– ages 0-17	55,339	53,881
– ages 0-4	14,059	13,644
– ages 5-9	15,989	14,481
– ages 10-14	15,899	16,318
– ages 15-19	15,497	15,332

### Economic Climate

Average wage per job (2002)	\$34,613
Unemployment	9.4%
Percent change in Food Assistance Program Participation (2001 vs. 2003)	21.9%

### Economic Security

	Number	Rate <sup>1</sup>	Michigan <sup>1</sup>
Children with child support order (April 04)	28,852	52.7%	38.5%
– average amount received per child	\$156	—	\$180
– percent non-custodial parents making no payment in previous six months	—	51.6%	51.5%
Children receiving FIP cash assistance <sup>2</sup>	6,416	11.6%	6.0%
Children in Food Assistance Program <sup>3</sup>	13,948	24.2%	14.8%

### Children with Special Needs

Students in Special Education	6,420	17.4%	14.3%
Children receiving Supplemental Security Income (rate per 1,000)	1,290	23.4	12.7

### Health Care

Children, ages 0-18, insured by...			
– Medicaid	21,547	37.4%	27.5%
– MICHild	716	1.2%	1.3%
Children, ages 1-14, hospitalized for asthma <sup>4</sup> (rate per 10,000)	158	37.4	25.4

### Juvenile Justice — 2002

#### Ages 10-17 (rates per 1,000)

Violent crime arrests	138	5.3	3.3
Property crime arrests	358	13.8	19.9

<sup>1</sup> All percentages are percent of all children except for Students in Special Education.

<sup>2</sup> Family Independence Program.

<sup>3</sup> Federal Food Stamp Program.

<sup>4</sup> Rate is reported for the three-year period 2000-2002 only for counties with a total number over 19.

\* Rate not calculated because of low incidence of events or unavailable data.

Note: All data are from 2003 unless otherwise noted.

## Trends in Child Well-Being

	Percent Change in Rate						Base year		Recent year			
	Worse			Better			Number	Rate	Number	Rate	Rank <sup>1</sup>	
	80	60	40	20	0	20	40	60	80			
<b>Economic Security 1995 vs. 2000</b>												
Children in poverty.												
– ages 0-17							16,137	27.2%	10,388	19.1%	69 of 83	
– ages 5-17							10,487	24.4%	6,542	15.7%	69 of 83	
Students receiving free/reduced priced school lunches (1995-96 vs. 2003-04)							14,276	38.2%	16,711	46.0%	64 of 82	
<b>Child Health Avg 1994-96 vs. 2000-02</b>												
Less than adequate prenatal care							639	23.2%	498	18.1%	22 of 82	
Low-birthweight babies							282	9.4%	254	9.2%	79 of 83	
Infant mortality (per 1,000)							26	7.2	26	9.5	46 of 55	
Child deaths, ages 1-14 (per 100,000)							12	26.8	6	14.7	6 of 40	
<b>Child Safety (per 1,000) FY1995 vs. FY2003</b>												
Children in investigated families							3,873	65.9	5,033	92.0	63 of 83	
Confirmed victims of abuse or neglect							665	11.3	821	15.0	63 of 82	
Children in out-of-home care							297	5.1	463	8.5	62 of 80	
– abuse or neglect							236	4.0	439	8.0	65 of 79	
– delinquency							61	1.0	24	0.4	4 of 51	
<b>Adolescence Avg 1994-96 vs. 2000-02</b>												
Births to teens, ages 15-17 (per 1,000)							199	41.9	129	28.6	76 of 81	
Deaths by accident, homicide, suicide for teens ages 15-19 (per 100,000)							11	70.6	9	60.3	26 of 43	
High school dropouts (1995-96 vs. 2001-02)							531	5.5%	296	3.2%	46 of 79	
<b>Education 2001-02 vs. 2003-04</b> (Students not meeting proficiency standards in math)												
Fourth graders							962	38.9%	690	28.7%	58 of 82	
Eighth graders							1,276	52.4%	1,215	46.3%	79 of 82	
Class of 2001 vs. class of 2003							890	40.9%	944	45.1%	73 of 82	

<sup>1</sup> A ranking of 1 means a county has the "best" rate compared to other counties in the state.

Missing bars indicate no change or a rate could not be calculated. Percentage change is calculated with unrounded rates.

\* Sometimes a rate could not be calculated because of low incidence of events or unavailable data.