

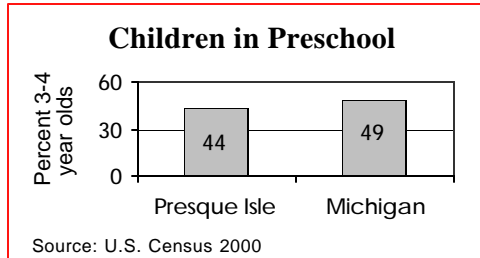
**Focus on Young Children**



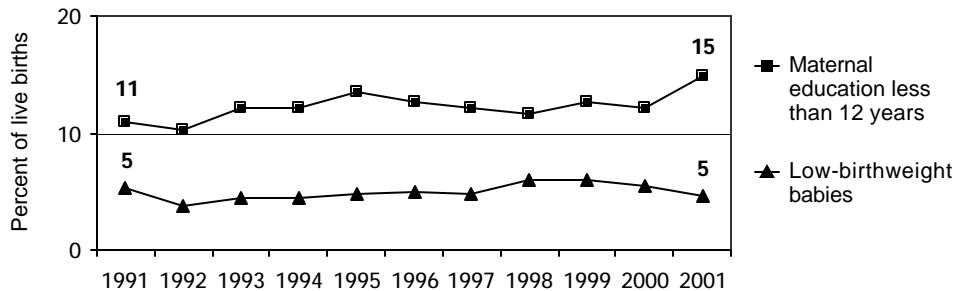
<b>Live Births</b>	<b>1990</b>	<b>1996</b>	<b>2002</b>	
	144	143	123	
		<b>Number</b>	<b>Percent</b>	<b>Michigan</b>
No listed paternity (2002)		5	4.1%	13.6%
Birth defects (1999-2001)		9	7.0%	6.3%
Lead poisoning in toddlers, ages 1-2				
– tested		27	9.7%	19.2%
– poisoned (% of tested)		1	3.8%	3.3%

**Child Care & Early Education**

	<b>Infants</b>	<b>Toddlers</b>	<b>Preschool</b>	<b>School-age</b>
Monthly costs (full-time/one child - 2004)	\$457	\$429	\$415	\$402
– percent average wage per job	22.8%	21.4%	20.7%	20.1%
Children in subsidized child care				
– ages 0-30 mos.		56		
– ages 31 mos.-5 yrs.		94		
– ages 6-12		122		
Total (includes children over age 12)		272		



**Infants at Risk: 1990-2002** (three-year rolling averages)



Source: Michigan Department of Community Health, Vital Records and Health Data Development Section

**Background**

<b>Population</b>	<b>2000</b>	<b>2003</b>
Total population	14,374	14,286
Child population		
– ages 0-17	2,968	2,757
– ages 0-4	672	648
– ages 5-9	757	698
– ages 10-14	900	834
– ages 15-19	997	931

<b>Economic Climate</b>	
Average wage per job (2002)	\$24,052
Unemployment	12.3%
Percent change in Food Assistance Program Participation (2001 vs. 2003)	37.8%

**Economic Security**

	<b>Number</b>	<b>Rate<sup>1</sup></b>	<b>Michigan<sup>1</sup></b>
Children with child support order (April 04)	883	31.3%	38.5%
– average amount received per child	\$219	—	\$180
– percent non-custodial parents making no payment in previous six months	—	39.6%	51.5%
Children receiving FIP cash assistance <sup>2</sup>	49	1.7%	6.0%
Children in Food Assistance Program <sup>3</sup>	289	9.6%	14.8%

**Children with Special Needs**

Students in Special Education	194	10.1%	14.3%
Children receiving Supplemental Security Income (rate per 1,000)	32	10.9	12.7

**Health Care**

Children, ages 0-18, insured by...			
– Medicaid	851	28.2%	27.5%
– MICHild	94	3.1%	1.3%
Children, ages 1-14, hospitalized for asthma <sup>4</sup> (rate per 10,000)	n/a	*	25.4

**Juvenile Justice — 2002**  
**Ages 10-17 (rates per 1,000)**

Violent crime arrests	2	*	3.3
Property crime arrests	6	4.1	19.9

n/a=not available

<sup>1</sup> All percentages are percent of all children except for Students in Special Education.  
<sup>2</sup> Family Independence Program.  
<sup>3</sup> Federal Food Stamp Program.

<sup>4</sup> Rate is reported for the three-year period 2000-2002 only for counties with a total number over 19.  
 \* Rate not calculated because of low incidence of events or unavailable data.  
 Note: All data are from 2003 unless otherwise noted.

## Trends in Child Well-Being

	Percent Change in Rate					Base year		Recent year		
	Worse		0	Better		Number	Rate	Number	Rate	Rank <sup>1</sup>
	80	60	40	20	0	20	40	60	80	
<b>Economic Security 1995 vs. 2000</b>										
Children in poverty.						681	18.6%	450	15.7%	45 of 83
– ages 0-17						463	16.7%	306	13.1%	48 of 83
– ages 5-17										
Students receiving free/reduced priced school lunches (1995-96 vs. 2003-04)						823	35.8%	737	39.0%	40 of 82
<b>Child Health Avg 1994-96 vs. 2000-02</b>										
Less than adequate prenatal care						21	16.4%	19	14.8%	10 of 82
Low-birthweight babies						6	4.9%	6	4.7%	5 of 83
Infant mortality (per 1,000)						2	14.4	2	15.6	54 of 55
Child deaths, ages 1-14 (per 100,000)						0	*	1	*	* of 40
<b>Child Safety (per 1,000) FY1995 vs. FY2003</b>										
Children in investigated families						214	63.5	162	57.4	23 of 83
Confirmed victims of abuse or neglect						34	10.1	35	12.4	50 of 82
Children in out-of-home care						11	3.3	14	5.0	30 of 80
– abuse or neglect						9	2.7	12	4.3	33 of 79
– delinquency						2	*	2	*	* of 51
<b>Adolescence Avg 1994-96 vs. 2000-02</b>										
Births to teens, ages 15-17 (per 1,000)						5	17.6	3	9.5	9 of 81
Deaths by accident, homicide, suicide for teens ages 15-19 (per 100,000)						0	*	1	*	* of 43
High school dropouts (1995-96 vs. 2001-02)						46	5.3%	20	2.7%	37 of 79
<b>Education 2001-02 vs. 2003-04</b> (Students not meeting proficiency standards in math)										
Fourth graders						31	26.1%	24	19.0%	18 of 82
Eighth graders						61	50.4%	50	35.5%	52 of 82
Class of 2001 vs. class of 2003						63	34.6%	64	44.1%	68 of 82

<sup>1</sup> A ranking of 1 means a county has the "best" rate compared to other counties in the state.

Missing bars indicate no change or a rate could not be calculated. Percentage change is calculated with unrounded rates.

\* Sometimes a rate could not be calculated because of low incidence of events or unavailable data.