

Focus on Young Children



Live Births

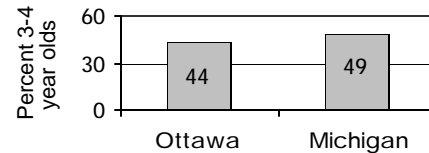
	1990	1996	2002
	3,164	3,367	3,472

	Number	Percent	Michigan
No listed paternity (2002)	167	4.8%	13.6%
Birth defects (1999-2001)	168	4.6%	6.3%
Lead poisoning in toddlers, ages 1-2			
– tested	756	10.3%	19.2%
– poisoned (% of tested)	12	1.6%	3.3%

Child Care & Early Education

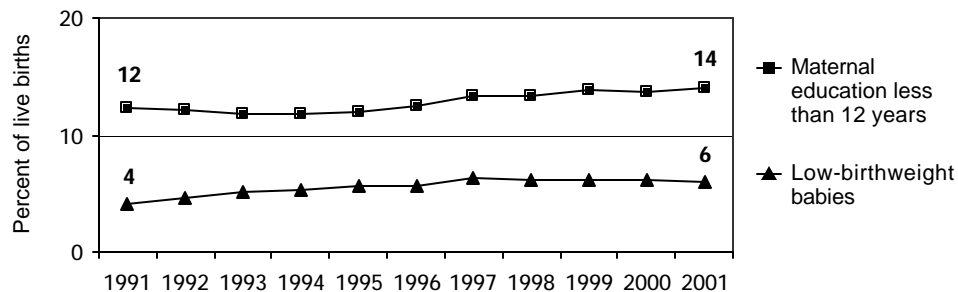
	Infants	Toddlers	Preschool	School-age
Monthly costs (full-time/one child - 2004)	\$534	\$524	\$516	\$513
– percent average wage per job	19.2%	18.9%	18.6%	18.4%
Children in subsidized child care				
– ages 0-30 mos.	862			
– ages 31 mos.-5 yrs.	1,197			
– ages 6-12	991			
Total (includes children over age 12)	3,068			

Children in Preschool



Source: U.S. Census 2000

Infants at Risk: 1990-2002 (three-year rolling averages)



Source: Michigan Department of Community Health, Vital Records and Health Data Development Section

Background

Population

	2000	2003
Total population	239,494	249,391
Child population		
– ages 0-17	68,115	67,709
– ages 0-4	18,187	17,718
– ages 5-9	19,062	18,314
– ages 10-14	19,619	19,847
– ages 15-19	20,730	21,769

Economic Climate

Average wage per job (2002)	\$33,347
Unemployment	6.2%
Percent change in Food Assistance Program Participation (2001 vs. 2003)	96.8%

Economic Security

	Number	Rate ¹	Michigan ¹
Children with child support order (April 04)	15,985	23.4%	38.5%
– average amount received per child	\$202	—	\$180
– percent non-custodial parents making no payment in previous six months	—	50.7%	51.5%
Children receiving FIP cash assistance ²	833	1.2%	6.0%
Children in Food Assistance Program ³	4,628	6.4%	14.8%

Children with Special Needs

Students in Special Education	5,861	14.3%	14.3%
Children receiving Supplemental Security Income (rate per 1,000)	273	3.9	12.7

Health Care

Children, ages 0-18, insured by...			
– Medicaid	10,788	14.8%	27.5%
– MICHild	631	0.9%	1.3%
Children, ages 1-14, hospitalized for asthma ⁴ (rate per 10,000)	50	9.5	25.4

Juvenile Justice — 2002

Ages 10-17 (rates per 1,000)

Violent crime arrests	98	3.1	3.3
Property crime arrests	936	29.4	19.9

¹ All percentages are percent of all children except for Students in Special Education.

² Family Independence Program.

³ Federal Food Stamp Program.

⁴ Rate is reported for the three-year period 2000-2002 only for counties with a total number over 19.

* Rate not calculated because of low incidence of events or unavailable data.

Note: All data are from 2003 unless otherwise noted.

Trends in Child Well-Being

	Percent Change in Rate						Base year		Recent year			
	Worse			Better			Number	Rate	Number	Rate	Rank ¹	
	80	60	40	20	0	20	40	60	80			
Economic Security 1995 vs. 2000												
Children in poverty.												
– ages 0-17							4,162	6.5%	3,810	5.6%	2 of 83	
– ages 5-17							2,698	5.9%	2,445	4.9%	2 of 83	
Students receiving free/reduced priced school lunches (1995-96 vs. 2003-04)	45							5,511	15.6%	9,276	22.6%	5 of 82
Child Health Avg 1994-96 vs. 2000-02												
Less than adequate prenatal care							750	20.9%	821	22.9%	51 of 82	
Low-birthweight babies							186	5.7%	215	6.0%	22 of 83	
Infant mortality (per 1,000)							24	7.5	26	7.1	24 of 55	
Child deaths, ages 1-14 (per 100,000)							11	22.7	12	23.2	21 of 40	
Child Safety (per 1,000) FY1995 vs. FY2003												
Children in investigated families							2,593	41.3	3,062	44.8	10 of 83	
Confirmed victims of abuse or neglect							416	6.6	392	5.7	13 of 82	
Children in out-of-home care							113	1.8	147	2.2	4 of 80	
– abuse or neglect							93	1.5	113	1.7	5 of 79	
– delinquency	56							20	0.3	34	0.5	7 of 51
Adolescence Avg 1994-96 vs. 2000-02												
Births to teens, ages 15-17 (per 1,000)							93	20.1	97	17.2	46 of 81	
Deaths by accident, homicide, suicide for teens ages 15-19 (per 100,000)	74							4	26.6	10	46.1	16 of 43
High school dropouts (1995-96 vs. 2001-02)							327	3.4%	222	1.8%	11 of 79	
Education 2001-02 vs. 2003-04 (Students not meeting proficiency standards in math)												
Fourth graders							677	24.2%	533	19.4%	21 of 82	
Eighth graders							930	31.9%	776	25.6%	19 of 82	
Class of 2001 vs. class of 2003	43							448	20.4%	744	29.1%	13 of 82

¹ A ranking of 1 means a county has the "best" rate compared to other counties in the state.

Missing bars indicate no change or a rate could not be calculated. Percentage change is calculated with unrounded rates.

* Sometimes a rate could not be calculated because of low incidence of events or unavailable data.