

## Focus on Young Children



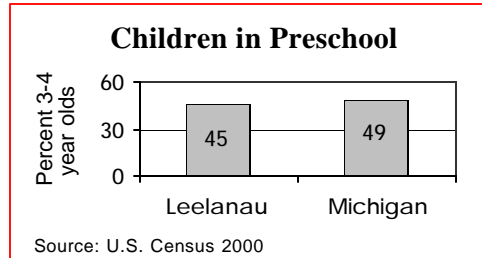
Live Births	1990	1996	2002
	222	215	187

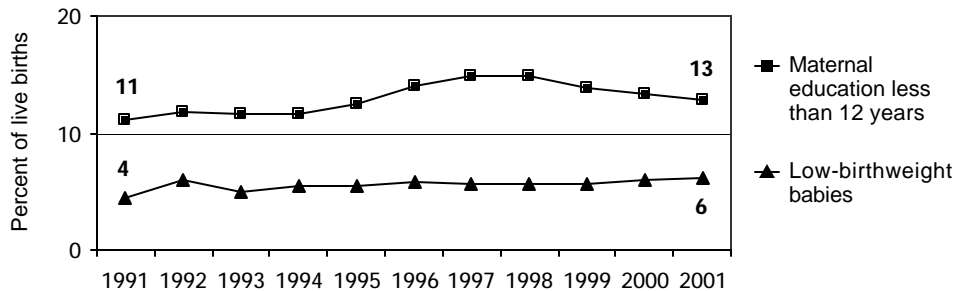
	Number	Percent	Michigan
No listed paternity (2002)	12	6.4%	13.6%
Birth defects (1999-2001)	9	4.7%	6.3%
Lead poisoning in toddlers, ages 1-2			
– tested	9	2.1%	19.2%
– poisoned (% of tested)	0	0.0%	3.3%

### Child Care & Early Education

	Infants	Toddlers	Preschool	School-age
Monthly costs (full-time/one child - 2004)	\$497	\$495	\$469	\$472
– percent average wage per job	23.7%	23.6%	22.4%	22.5%
Children in subsidized child care				
– ages 0-30 mos.+	513			
– ages 31 mos.-5 yrs.+	827			
– ages 6-12+	678			
Total (includes children over age 12) +	2,027			



### Infants at Risk: 1990-2002 (three-year rolling averages)



Source: Michigan Department of Community Health, Vital Records and Health Data Development Section

## Background

Population	2000	2003
Total population	21,262	21,860
Child population		
– ages 0-17	5,107	4,808
– ages 0-4	1,059	921
– ages 5-9	1,421	1,198
– ages 10-14	1,679	1,626
– ages 15-19	1,412	1,636

Economic Climate	
Average wage per job (2002)	\$25,127
Unemployment	5.2%
Percent change in Food Assistance Program Participation (2001 vs. 2003)+	68.5%

### Economic Security

	Number	Rate <sup>1</sup>	Michigan <sup>1</sup>
Children with child support order (April 04)	917	18.3%	38.5%
– average amount received per child	\$242	—	\$180
– percent non-custodial parents making no payment in previous six months	—	41.7%	51.5%
Children receiving FIP cash assistance <sup>2+</sup>	345	1.4%	6.0%
Children in Food Assistance Program <sup>3+</sup>	2,167	8.3%	14.8%

### Children with Special Needs

Students in Special Education	399	14.9%	14.3%
Children receiving Supplemental Security Income (rate per 1,000)+	190	7.8	12.7

### Health Care

Children, ages 0-18, insured by...			
– Medicaid +	5,585	21.5%	27.5%
– MICHild	140	2.6%	1.3%
Children, ages 1-14, hospitalized for asthma <sup>4</sup> (rate per 10,000)	7	19.8	25.4

### Juvenile Justice — 2002 Ages 10-17 (rates per 1,000)

Violent crime arrests	0	*	3.3
Property crime arrests	0	*	19.9

(+Numbers are combined with Grand Traverse.)

<sup>1</sup> All percentages are percent of all children except for Students in Special Education.

<sup>2</sup> Family Independence Program.

<sup>3</sup> Federal Food Stamp Program.

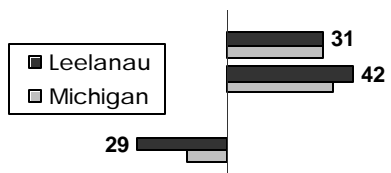
<sup>4</sup> Rate is reported for the three-year period 2000-2002 only for counties with a total number over 19.

\* Rate not calculated because of low incidence of events or unavailable data.

Note: All data are from 2003 unless otherwise noted.

## Trends in Child Well-Being

	Percent Change in Rate						Base year		Recent year			
	Worse			Better			Number	Rate	Number	Rate	Rank <sup>1</sup>	
	80	60	40	20	0	20	40	60	80			
<b>Economic Security 1995 vs. 2000</b>												
Children in poverty.												
– ages 0-17							641	13.5%	455	9.1%	12 of 83	
– ages 5-17							443	13.0%	292	7.1%	11 of 83	
Students receiving free/reduced priced school lunches (1995-96 vs. 2003-04)							561	21.2%	722	27.4%	16 of 82	
<b>Child Health Avg 1994-96 vs. 2000-02</b>												
Less than adequate prenatal care							54	28.6%	36	18.9%	27 of 82	
Low-birthweight babies							11	5.5%	12	6.2%	26 of 83	
Infant mortality (per 1,000)							1	*	1	*	* of 55	
Child deaths, ages 1-14 (per 100,000)							0	*	1	*	* of 40	
<b>Child Safety (per 1,000) FY1995 vs. FY2003</b>												
Children in investigated families +							926	39.0	865	35.2	4 of 83	
Confirmed victims of abuse or neglect +							138	5.8	129	5.3	10 of 82	
Children in out-of-home care							18	3.7	29	5.8	40 of 80	
– abuse or neglect							12	2.5	20	4.0	25 of 79	
– delinquency							6	1.2	9	1.8	34 of 51	
(+Numbers are combined with Grand Traverse.)												
<b>Adolescence Avg 1994-96 vs. 2000-02</b>												
Births to teens, ages 15-17 (per 1,000)							3	8.7	4	8.7	5 of 81	
Deaths by accident, homicide, suicide for teens ages 15-19 (per 100,000)							1	*	0	*	* of 43	
High school dropouts (1995-96 vs. 2001-02)							8	1.1%	14	1.5%	7 of 79	
<b>Education 2001-02 vs. 2003-04</b>												
(Students not meeting proficiency standards in math)												
Fourth graders							50	26.5%	33	21.6%	30 of 82	
Eighth graders							76	34.4%	48	25.0%	14 of 82	
Class of 2001 vs. class of 2003							26	14.3%	70	32.7%	21 of 82	



<sup>1</sup> A ranking of 1 means a county has the "best" rate compared to other counties in the state.

Missing bars indicate no change or a rate could not be calculated. Percentage change is calculated with unrounded rates.

\* Sometimes a rate could not be calculated because of low incidence of events or unavailable data.