

Focus on Young Children



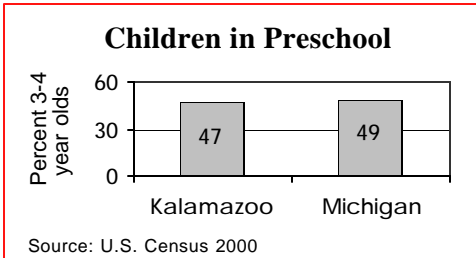
Live Births

	1990	1996	2002
	3,526	3,125	3,048

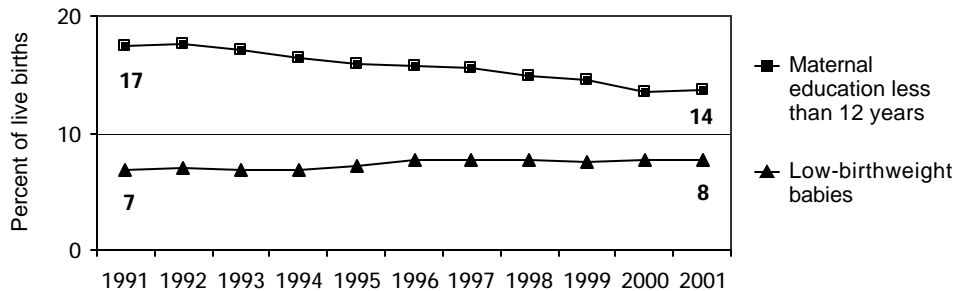
	Number	Percent	Michigan
No listed paternity (2002)	429	14.1%	13.6%
Birth defects (1999-2001)	189	6.0%	6.3%
Lead poisoning in toddlers, ages 1-2			
– tested	927	15.0%	19.2%
– poisoned (% of tested)	23	2.5%	3.3%

Child Care & Early Education

	Infants	Toddlers	Preschool	School-age
Monthly costs (full-time/one child - 2004)	\$575	\$540	\$523	\$513
– percent average wage per job	20.1%	18.9%	18.3%	18.0%
Children in subsidized child care				
– ages 0-30 mos.	1,748			
– ages 31 mos.-5 yrs.	2,389			
– ages 6-12	2,397			
Total (includes children over age 12)	6,579			



Infants at Risk: 1990-2002 (three-year rolling averages)



Source: Michigan Department of Community Health, Vital Records and Health Data Development Section

Background

Population

	2000	2003
Total population	238,877	242,110
Child population		
– ages 0-17	57,319	57,258
– ages 0-4	15,539	15,459
– ages 5-9	16,143	15,513
– ages 10-14	16,411	16,577
– ages 15-19	20,331	19,603

Economic Climate

Average wage per job (2002)	\$34,253
Unemployment	5.3%
Percent change in Food Assistance Program Participation (2001 vs. 2003)	31.7%

Economic Security

	Number	Rate ¹	Michigan ¹
Children with child support order (April 04)	22,375	38.9%	38.5%
– average amount received per child	\$177	—	\$180
– percent non-custodial parents making no payment in previous six months	—	50.2%	51.5%
Children receiving FIP cash assistance ²	3,449	5.7%	6.0%
Children in Food Assistance Program ³	9,692	15.6%	14.8%

Children with Special Needs

Students in Special Education	4,403	12.7%	14.3%
Children receiving Supplemental Security Income (rate per 1,000)	767	12.7	12.7

Health Care

Children, ages 0-18, insured by...			
– Medicaid	16,353	26.4%	27.5%
– MICHild	690	1.1%	1.3%
Children, ages 1-14, hospitalized for asthma ⁴ (rate per 10,000)	67	15.1	25.4

Juvenile Justice — 2002

Ages 10-17 (rates per 1,000)

Violent crime arrests	152	5.8	3.3
Property crime arrests	954	36.3	19.9

¹ All percentages are percent of all children except for Students in Special Education.

² Family Independence Program.

³ Federal Food Stamp Program.

⁴ Rate is reported for the three-year period 2000-2002 only for counties with a total number over 19.

* Rate not calculated because of low incidence of events or unavailable data.

Note: All data are from 2003 unless otherwise noted.

Trends in Child Well-Being

	Percent Change in Rate					Base year		Recent year			
	Worse		0	Better		Number	Rate	Number	Rate	Rank ¹	
	80	60	40	20	0	20	40	60	80		
Economic Security 1995 vs. 2000											
Children in poverty.											
– ages 0-17											
– ages 5-17											
Students receiving free/reduced priced school lunches (1995-96 vs. 2003-04)											
Child Health Avg 1994-96 vs. 2000-02											
Less than adequate prenatal care											
Low-birthweight babies											
Infant mortality (per 1,000)											
Child deaths, ages 1-14 (per 100,000)											
Child Safety (per 1,000) FY1995 vs. FY2003											
Children in investigated families											
Confirmed victims of abuse or neglect											
Children in out-of-home care											
– abuse or neglect											
– delinquency											
Adolescence Avg 1994-96 vs. 2000-02											
Births to teens, ages 15-17 (per 1,000)											
Deaths by accident, homicide, suicide for teens ages 15-19 (per 100,000)											
High school dropouts (1995-96 vs. 2001-02)											
Education 2001-02 vs. 2003-04 (Students not meeting proficiency standards in math)											
Fourth graders											
Eighth graders											
Class of 2001 vs. class of 2003											

¹ A ranking of 1 means a county has the "best" rate compared to other counties in the state.

Missing bars indicate no change or a rate could not be calculated. Percentage change is calculated with unrounded rates.

* Sometimes a rate could not be calculated because of low incidence of events or unavailable data.